



Service Manual

Model TH255

S/N TBS00100 & After

31200364

*Revised
February 8, 2012*

SECTION CONTENTS

Section	Subject	Page
Section 1		
Safety Practices		
1.1	Introduction	1-1
1.2	Disclaimer	1-2
1.3	Operation & Maintenance Manual	1-2
1.4	Do Not Operate Tags	1-2
1.5	Safety Information	1-2
1.6	Safety Instructions	1-3
1.7	Safety Decals	1-4
Section 2		
General Information and Specifications		
2.1	Replacement Parts and Warranty Information	2-1
2.2	Torques	2-2
2.3	Specifications	2-3
2.4	Fluids, Lubricants and Capacities	2-11
2.5	Maintenance Schedules	2-13
2.6	Lubrication Schedule	2-15
Section 3		
Boom		
3.1	Boom System Component Terminology	3-1
3.2	Safety Information	3-2
3.3	Boom System - Two Section Boom	3-3
3.4	Boom Assembly Maintenance	3-3
3.5	Boom Wear Pads	3-3
3.6	Boom Wear Pads	3-10
3.7	Quick Coupler Assembly	3-11
3.8	Forks	3-12
3.9	Boom Prop (If Equipped)	3-13
3.10	Emergency Boom Lowering Procedure	3-13
3.10	Troubleshooting	3-16
Section 4		
Cab and Covers		
4.1	Operator Cab and Covers Component Terminology	4-1
4.2	Safety Information	4-2
4.3	Operator Cab	4-3
4.4	Cab Components	4-3
4.5	Cab Removal	4-3
4.6	Cab Installation	4-8
4.6	Cab Installation	4-9

Section	Subject	Page
Section 5		
Axles, Drive Shafts, Wheels and Tires		5-1
5.1	Axle, Drive Shaft and Wheel Component Terminology	5-2
5.2	Safety Information	5-3
5.3	General Information	5-3
5.4	Axle Assemblies	5-3
5.5	Drive Shafts	5-9
5.6	Wheels and Tires	5-10
5.7	Steering Angle Adjustment	5-11
5.8	Brakes	5-11
5.9	Towing a Disabled Machine	5-12
Section 6		
Transmission		6-1
6.1	Transmission Assembly Component Terminology	6-2
6.2	Safety Information	6-3
6.3	Transmission Description	6-3
6.4	Transmission Specifications	6-3
6.5	Transmission Replacement	6-3
6.6	Transmission Filter Replacement	6-5
Section 7		
Engine		7-1
7.1	Introduction	7-2
7.2	Safety Information	7-4
7.3	Engine Serial Number	7-4
7.4	Specifications and Maintenance Information	7-4
7.5	Engine Cooling System	7-4
7.6	Engine Electrical System	7-5
7.7	Fuel System	7-5
7.8	Engine Exhaust System	7-7
7.9	Air Cleaner Assembly	7-8
7.10	Engine Replacement	7-8
7.11	Engine Coupler	7-11
7.12	Troubleshooting	7-11
Section 8		
Hydraulic System		8-1
8.1	Hydraulic Component Terminology	8-3
8.2	Safety Information	8-4
8.3	General Information	8-4
8.4	Specifications	8-4
8.5	Hoses, Tube Lines, Fittings, Etc.	8-4
8.6	Hydraulic Pressure Diagnosis	8-5
8.7	Hydraulic Schematic	8-7
8.8	Hydraulic Reservoir	8-13
8.9	Hydraulic System Pump	8-13
8.10	Front Drive Motor	8-14
8.11	Control Valves	8-15
8.12	Hydraulic Cylinders	8-29

Section 9

Electrical System		9-1
9.1	Electrical Component Terminology	9-3
9.2	Safety Information	9-4
9.3	Fuses and Relays	9-4
9.4	Electrical System Schematics	9-7
9.5	Circuit Breakdowns	9-18
9.6	Engine Start Circuit	9-22
9.7	Charging Circuit	9-23
9.8	Electrical System Components	9-24
9.9	Window Wiper/Washer	9-26
9.10	Cab Heater and Fan	9-28
9.11	Switches, Solenoids and Senders	9-29
9.12	Load Stability System (CE & AUS) Before S/N TBS00627	9-33
9.13	Load Stability System (CE & AUS) S/N TBS00627 & After	9-35
9.14	Hand Held Analyzer (CE & AUS) S/N TBS00627 & After	9-41



Section 1

Safety Practices

Contents

PARAGRAPH	TITLE	PAGE
1.1	Introduction	1-2
1.2	Disclaimer	1-2
1.3	Operation & Maintenance Manual	1-2
1.4	Do Not Operate Tags	1-2
1.5	Safety Information	1-2
1.5.1	Safety Alert System and Signal Words	1-2
1.6	Safety Instructions	1-3
1.6.1	Personal Hazards	1-3
1.6.2	Equipment Hazards	1-3
1.6.3	General Hazards	1-3
1.6.4	Operational Hazards	1-4
1.7	Safety Decals	1-4



Safety Practices

1.1 INTRODUCTION

This service manual provides general directions for accomplishing service and repair procedures. Following the procedures in this manual will help assure safety and equipment reliability.

Read, understand and follow the information in this manual, and obey all locally approved safety practices, procedures, rules, codes, regulations and laws.

These instructions cannot cover all details or variations in the equipment, procedures, or processes described, nor provide directions for meeting every possible contingency during operation, maintenance, or testing. When additional information is desired consult the local Caterpillar dealer.

Many factors contribute to unsafe conditions: carelessness, fatigue, overload, inattentiveness, unfamiliarity, even drugs and alcohol, among others. For optimal safety, encourage everyone to think, and to act, safely.

Appropriate service methods and proper repair procedures are essential for the safety of the individual doing the work, for the safety of the operator, and for the safe, reliable operation of the machine. All references to the right side, left side, front and rear are given from the operator's seat looking in a forward direction.

Supplementary information is available from the manufacturer in the form of Service Bulletins, Service Campaigns, Service Training Schools, the service website, other literature, and through updates to the manual itself.

1.2 DISCLAIMER

All information in this manual is based on the latest product information available at the time of publication. The manufacturer reserves the right to make changes and improvements to its products, and to discontinue the manufacture of any product, at its discretion at any time without public notice or obligation.

1.3 OPERATION & MAINTENANCE MANUAL

The mechanic must not operate the machine until the Operation & Maintenance Manual has been read & understood, training has been accomplished and operation of the machine has been completed under the supervision of an experienced and qualified operator.

An Operation & Maintenance Manual is supplied with each machine and must be kept in the manual holder located in the cab. In the event that the Operation & Maintenance Manual is missing, consult your local service distributor before proceeding.

1.4 DO NOT OPERATE TAGS

Place **Do Not Operate** Tags on the ignition key switch and the steering wheel before attempting to perform any service or maintenance. Remove key and disconnect battery leads.

1.5 SAFETY INFORMATION

To avoid possible death or injury, carefully read, understand and comply with all safety messages.

In the event of an accident, know where to obtain medical assistance and how to use a first-aid kit and fire extinguisher/fire suppression system. Keep emergency telephone numbers (fire department, ambulance, rescue squad/paramedics, police department, etc.) nearby. If working alone, check with another person routinely to help assure personal safety.

1.5.1 Safety Alert System and Signal Words

DANGER

DANGER indicates an imminently hazardous situation which, if not avoided, will result in death or serious injury.

WARNING

WARNING indicates a potentially hazardous situation which, if not avoided, could result in death or serious injury.

CAUTION

CAUTION indicates a potentially hazardous situation which, if not avoided, may result in minor or moderate injury.



1.6 SAFETY INSTRUCTIONS

Following are general safety statements to consider **before** performing maintenance procedures on the telehandler. Additional statements related to specific tasks and procedures are located throughout this manual and are listed prior to any work instructions to provide safety information before the potential of a hazard occurs.

For all safety messages, carefully read, understand and follow the instructions **before** proceeding.

1.6.1 Personal Hazards

PERSONAL SAFETY GEAR: Wear all the protective clothing and personal safety gear necessary to perform the job safely. This might include heavy gloves, safety glasses or goggles, filter mask or respirator, safety shoes or a hard hat.

LIFTING: **NEVER** lift a heavy object without the help of at least one assistant or a suitable sling and hoist.

1.6.2 Equipment Hazards

LIFTING OF EQUIPMENT: Before using any lifting equipment (chains, slings, brackets, hooks, etc.), verify that it is of the proper capacity, in good working order, and is properly attached.

NEVER stand or otherwise become positioned under a suspended load or under raised equipment. The load or equipment could fall or tip.

DO NOT use a hoist, jack or jack stands only to support equipment. Always support equipment with the proper capacity blocks or stands properly rated for the load.

HAND TOOLS: Always use the proper tool for the job; keep tools clean and in good working order, and use special service tools only as recommended.

1.6.3 General Hazards

SOLVENTS: Only use approved solvents that are known to be safe for use.

HOUSEKEEPING: Keep the work area and operator's cab clean, and remove all hazards (debris, oil, tools, etc.).

FIRST AID: Immediately clean, dress and report all injuries (cuts, abrasions, burns, etc.), no matter how minor the injury may seem. Know the location of a First Aid Kit, and know how to use it.

CLEANLINESS: Wear eye protection, and clean all components with a high-pressure or steam cleaner before attempting service.

When removing hydraulic components, plug hose ends and connections to prevent excess leakage and contamination. Place a suitable catch basin beneath the machine to capture fluid run-off.

It is good practice to avoid pressure-washing electrical/electronic components. In the event pressure-washing the machine is needed, ensure the machine is shut down before pressure-washing. Should pressure-washing be utilized to wash areas containing electrical/electronic components, it is recommended a maximum pressure of 52 bar (750 psi) at a minimum distance of 30,5 cm (12 in) away from these components. If electrical/electronic components are sprayed, spraying must not be direct and for brief time periods to avoid heavy saturation,

Check and obey all Federal, State and/or Local regulations regarding waste storage, disposal and recycling.



Safety Practices

1.6.4 Operational Hazards

ENGINE: Stop the engine before performing any service unless specifically instructed otherwise.

VENTILATION: Avoid prolonged engine operation in enclosed areas without adequate ventilation.

SOFT SURFACES AND SLOPES: **NEVER** work on a machine that is parked on a soft surface or slope. The machine must be on a hard level surface, with the wheels blocked before performing any service.

FLUID TEMPERATURE: **NEVER** work on a machine when the engine, cooling or hydraulic systems are hot. Hot components and fluids can cause severe burns. Allow systems to cool before proceeding.

FLUID PRESSURE: Before loosening any hydraulic or diesel fuel component, hose or tube, turn the engine OFF. Wear heavy, protective gloves and eye protection. **NEVER** check for leaks using any part of your body; use a piece of cardboard or wood instead. If injured, seek medical attention immediately. Diesel fluid leaking under pressure can explode. Hydraulic fluid and diesel fuel leaking under pressure can penetrate the skin, cause infection, gangrene and other serious personal injury.

Relieve all pressure before disconnecting any component, part, line or hose. Slowly loosen parts and allow release of residual pressure before removing any part or component. Before starting the engine or applying pressure, use components, parts, hoses and pipes that are in good condition, connected properly and are tightened to the proper torque. Capture fluid in an appropriate container and dispose of in accordance with prevailing environmental regulations.

RADIATOR CAP: The cooling system is under pressure, and escaping coolant can cause severe burns and eye injury. To prevent personal injury, **NEVER** remove the radiator cap while the cooling system is hot. Wear safety glasses. Turn the radiator cap to the first stop and allow pressure to escape before removing the cap completely. Failure to follow the safety practices could result in death or serious injury.

FLUID FLAMABILITY: **DO NOT** service the fuel or hydraulic systems near an open flame, sparks or smoking materials.

NEVER drain or store fluids in an open container. Engine fuel and hydraulic fluid are flammable and can cause a fire and/or explosion.

DO NOT mix gasoline or alcohol with diesel fuel. The mixture can cause an explosion.

PRESSURE TESTING: When conducting any test, only use test equipment that is correctly calibrated and in good condition. Use the correct equipment in the proper manner, and make changes or repairs as indicated by the test procedure to achieve the desired result.

LEAVING MACHINE: Lower the forks or attachment to the ground before leaving the machine.

TIRES: Always keep tires inflated to the proper pressure to help prevent tipover. **DO NOT** over-inflate tires.

NEVER use mismatched tire types, sizes or ply ratings. Always use matched sets according to machine specifications.

MAJOR COMPONENTS: Never alter, remove, or substitute any items such as counterweights, tires, batteries or other items that may reduce or affect the overall weight or stability of the machine.

BATTERY: **DO NOT** charge a frozen battery. Charging a frozen battery may cause it to explode. Allow the battery to thaw before jump-starting or connecting a battery charger.

1.7 SAFETY DECALS

Check that all safety decals are present and readable on the machine. Refer to the Operation & Maintenance Manual supplied with machine for information.



Section 2

General Information and Specifications

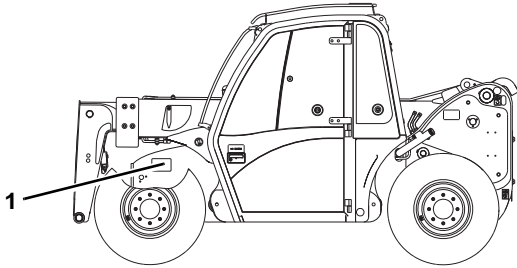
Contents

PARAGRAPH	TITLE	PAGE
2.1	Replacement Parts and Warranty Information	2-2
2.2	Torques	2-3
2.2.1	SAE Fastener Torque Chart	2-3
2.2.2	Metric Fastener Torque Chart	2-6
2.2.3	Hydraulic Hose Torque Chart	2-10
2.3	Specifications	2-11
2.3.1	Travel Speed	2-11
2.3.2	Hydraulic Cylinder Performance Specifications	2-11
2.3.3	Electrical System	2-11
2.3.4	Engine Performance Specifications	2-12
2.3.5	Tires	2-12
2.4	Fluids, Lubricants and Capacities	2-13
2.5	Maintenance Schedules	2-15
2.5.1	10,1st 50 & 50 Hour Maintenance Schedule	2-15
2.5.2	1st 250, 250 & 500 Hour Maintenance Schedule	2-16
2.5.3	1000 Hour Maintenance Schedule	2-17
2.6	Lubrication Schedule	2-18
2.6.1	250 Hour Lubrication Schedule	2-18

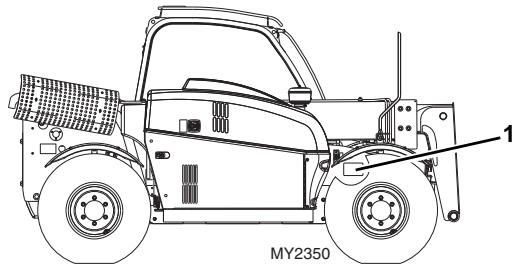


2.1 REPLACEMENT PARTS AND WARRANTY INFORMATION

EARLY PRODUCTION ONLY



CURRENT PRODUCTION



Before ordering parts or initiating service inquiries, make note of the machine serial number. The machine serial number plate (1) is located as indicated in the figure.

Note: *The replacement of any part on this machine with any other than factory authorized replacement parts can adversely affect the performance, durability, or safety of the machine, and will void the warranty. JLG disclaims liability for any claims or damages, whether regarding property damage, personal injury or death arising out of the use of unauthorized replacement parts.*

A warranty registration form must be filled out by the local Caterpillar dealer, signed by the purchaser and returned to the manufacturer when the machine is sold and/or put into use.

Registration activates the warranty period and helps to assure that warranty claims are promptly processed. To guarantee full warranty service, verify that the local Caterpillar dealer has returned the business reply card of the warranty registration form to the manufacturer.

BUY NOW

**Then Instant Download
the Complete Manual
Thank you very much!**