

**CROWN**



**Parts Manual**

**RT3030** Series

---

# **CROWN**

## ***TABLE OF CONTENT***

---

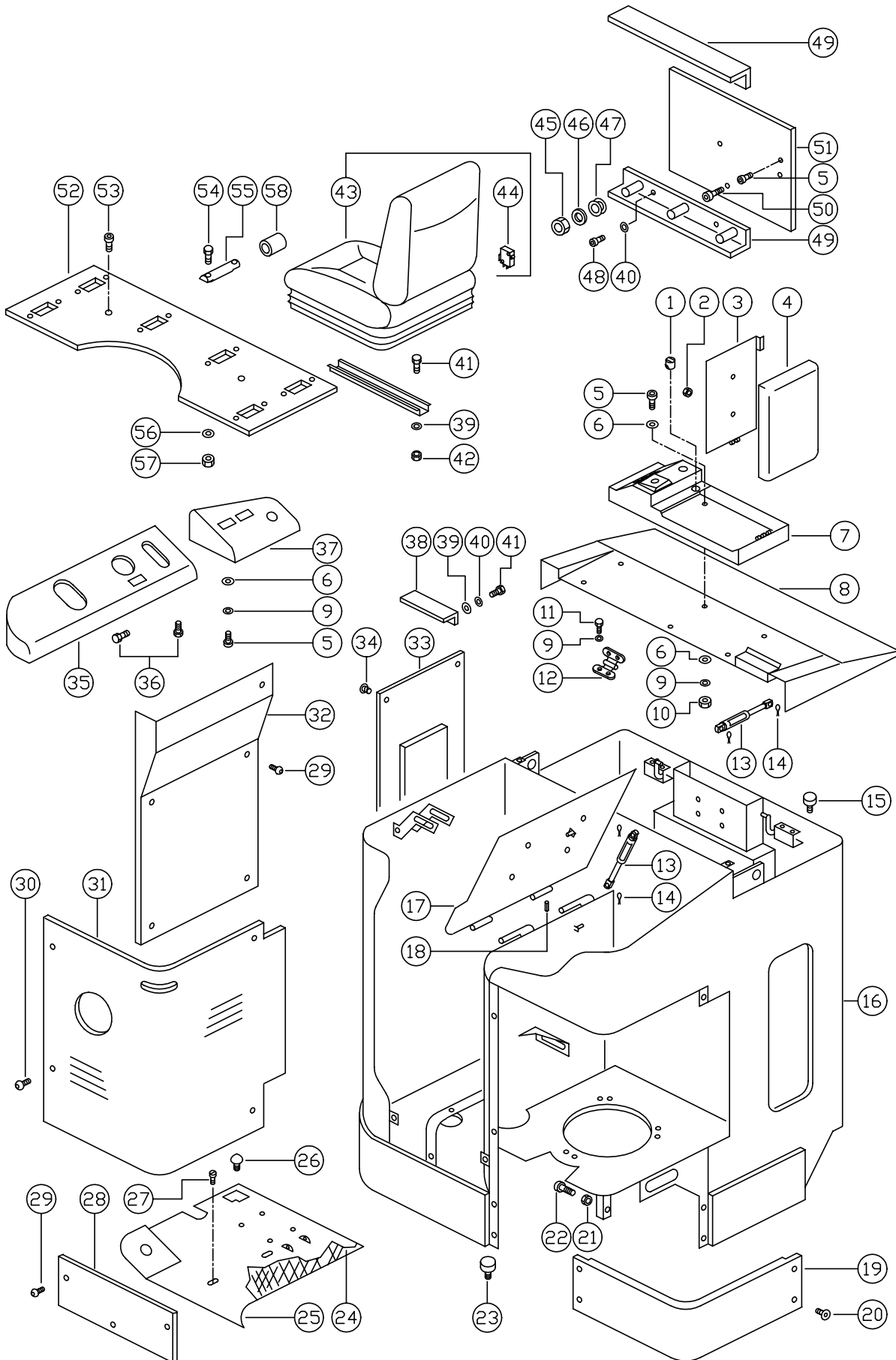
## Table of Content

<b>MA – SAFETY</b>	<b>PAGE</b>	<b>SERIAL NR. CUT</b>	<b>REV.</b>
Safety Symbols used in the Manual .....	7 .....		Rev.1 01/01
<b>ITD – INTRODUCTION</b>	<b>PAGE</b>	<b>SERIAL NR. CUT</b>	<b>REV.</b>
General .....	11		
Model-Number .....	12		
<b>P-1.1 – LUBRICATION</b>	<b>PAGE</b>	<b>SERIAL NR. CUT</b>	<b>REV.</b>
Lubrication Type .....	15		
Grease Intervals .....	16		
<b>DIA – ELECTRICAL DIAGRAMS</b>	<b>PAGE</b>	<b>SERIAL NR. CUT</b>	<b>REV.</b>
Diagrams/Control Circuit .....	19		
<b>M/P – HYDRAULIC</b>	<b>PAGE</b>	<b>SERIAL NR. CUT</b>	<b>REV.</b>
Hydraulic Schematic .....	23		
<b>SECTION 1 – COVERS</b>	<b>PAGE</b>	<b>SERIAL NR. CUT</b>	<b>REV.</b>
Covers .....	28,30		
Caster Wheel .....	32		
<b>SECTION 2 – HYDRAULIC PARTS</b>	<b>PAGE</b>	<b>SERIAL NR. CUT</b>	<b>REV.</b>
Tube/Hose Layout .....	36		
Pumpen Motor and Pump .....	38		
<b>SECTION 3 – DRIVE UNIT</b>	<b>PAGE</b>	<b>SERIAL NR. CUT</b>	<b>REV.</b>
Gearbox .....	42		
Drive Motor .....	44		
<b>SECTION 4 – ELEKTICAL</b>	<b>PAGE</b>	<b>SERIAL NR. CUT</b>	<b>REV.</b>
Elektrical Parts .....	48,50,52 .....		Rev.1 04/02
Wiring Harness .....	54		
<b>SECTION 5 – BRAKE</b>	<b>PAGE</b>	<b>SERIAL NR. CUT</b>	<b>REV.</b>
Brake .....	58		
<b>SECTION 6 – STEERING</b>	<b>PAGE</b>	<b>SERIAL NR. CUT</b>	<b>REV.</b>
Steering .....	62 .....		Rev.1 04/02
<b>SECTION 7 – MAST/LIFT STRUCTURE</b>	<b>PAGE</b>	<b>SERIAL NR. CUT</b>	<b>REV.</b>
Lift Structure .....	66 .....		Rev.1 04/02
<b>SECTION 8 – CYLINDER</b>	<b>PAGE</b>	<b>SERIAL NR. CUT</b>	<b>REV.</b>
Lift Cylinder .....	70		

---

<b>SECTION 10 – MISCELLANEOUS SERVICE INF.</b>	<b>PAGE</b>	<b>SERIAL NR.</b>	<b>CUT</b>	<b>REV.</b>
Battery Trolley .....	74			

This Manual contains 76 Pages



M2003

INDEX	PART NUMBER	PART NAME	NUMBER REQUIRED
1	809437	Fastener	1
2	809004-001	Nut	3
3	809438-001	Support	1
4	809439	Pad	1
5	809276-004	Screw	7
6	809005-007	Washer	10
7	809531	Support	1
8	809532	Cover	1
	809533	Cover 500Ah	1
9	809005-002	Washer	12
10	809004-005	Nut	4
11	809006-002	Screw	8
12	809511	Hinge	2
13	809512	Gas Strut	3
14	809441	Split pin	6
15	809291-001	Buffer	2
16	809513	Chassis	1
	809514	Chassis 500Ah	1
17	809515	Support	1
18	809001-012	Pin	1
19	809516	Shield	1
20	809276-005	Screw	4
21	809004-002	Nut	2
22	809006-033	Screw	2
23	809517	Buffer	1
24	809518	Floor Plate	1
25	809519	Floor Plate	1
26	809447	Buffer	1
27	809155-003	Screw	2
28	809520	Shield	1
29	809006-010	Screw	8
30	809006-005	Screw	4
31	809521	Cover	1
32	809522	Plate	1
33	809523	Lid	1
	809534	Lid 500Ah	1
34	809282-002	Fastener	1
35	809524	Instrument Panel	1
36	809006-015	Screw	2
37	809525	Instrument Panel	1
38	809526	Holder	1
39	809005-008	Washer	6
40	809005-004	Washer	6
41	809006-007	Screw	6
42	809004-004	Nut	4
43	809450	Seat	1
44	809451	Switch	1
45	809208-004	Nut	6
46	809005-028	Washer	6
47	809010-006	Pulley	6
48	809006-029	Screw	6
49	809527	Guide	2
50	809006-008	Screw	2
51	809528	Support	1

Always Specify Model & Serial Number

**BUY NOW**

**Then Instant Download  
the Complete Manual  
Thank you very much!**