



SP3400 SERIES Four-Point PARTS MANUAL



Order Number: 812737-006
Revision: A • Printed in U.S.A.

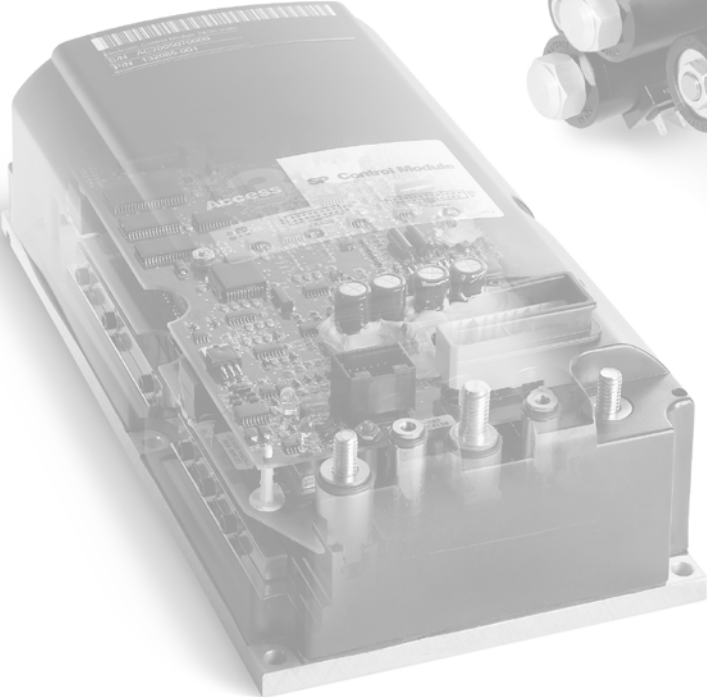
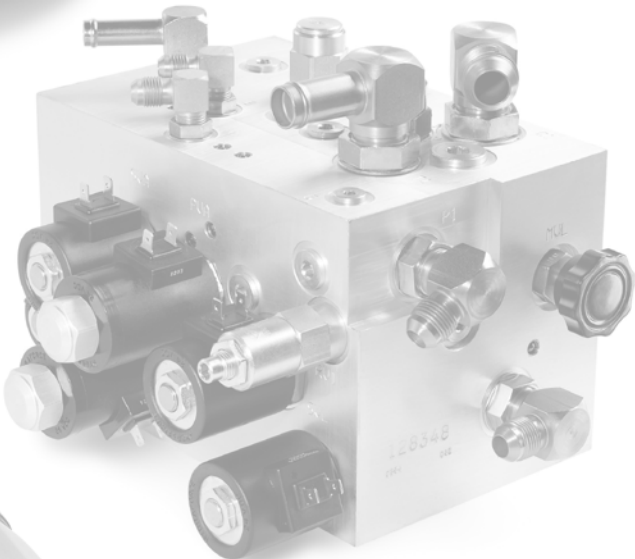


TABLE OF CONTENTS





TABLE OF CONTENTS

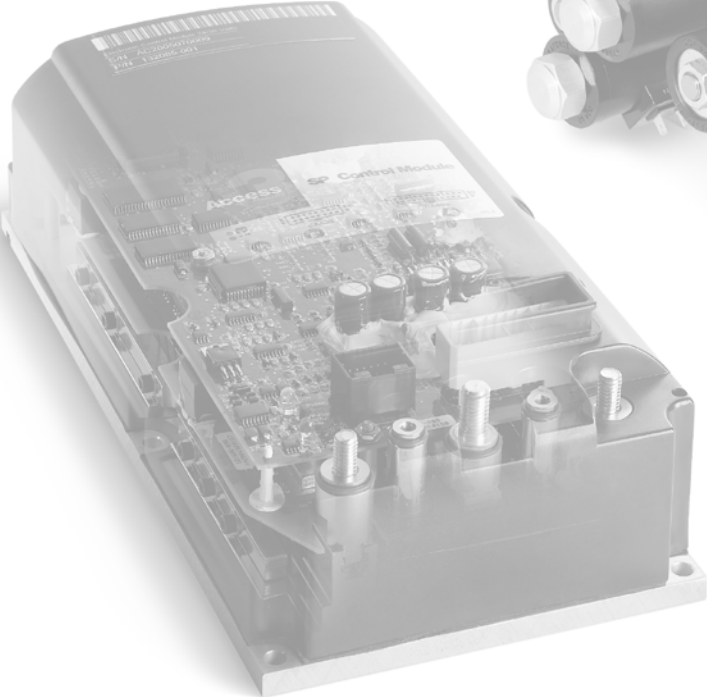
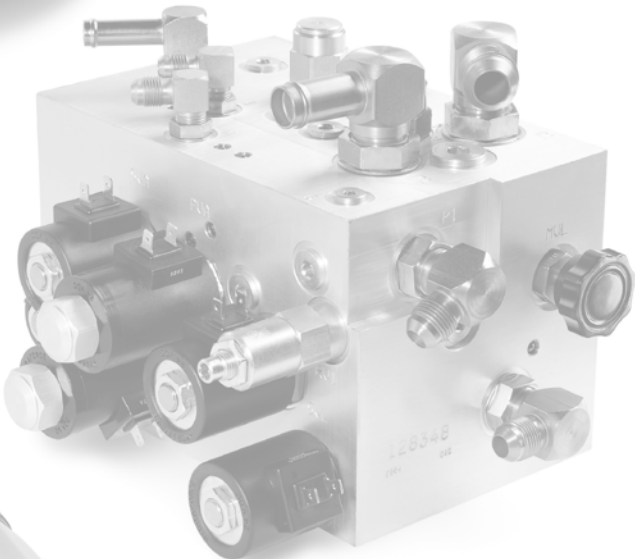
TABLE OF CONTENTS

COVERS	PAGE	SERIAL NO. CUT	REV.
Power Unit	2		
Battery Retainers, Rollers, Switches	4		
Caster Assembly	6	01	Rev. 05/06
HYDRAULIC SYSTEM	PAGE	SERIAL NO. CUT	REV.
Power Unit	10		
TT Mast	14		
Lift Pump	16	01	Rev. 05/06
Lift Motor with Temperature and Brush Wear Sensors	18	02	Rev. 06/06
Manifold - Two Speed Lift	20	01	Rev. 06/06
DRIVE UNIT	PAGE	SERIAL NO. CUT	REV.
Drive Unit	24		
Drive Unit Lubrication System	30	03	Rev. 10/06
Drive Motor	32	01	Rev. 06/06
Drive Tire	34	01	Rev. 10/06
ELECTRICAL SYSTEM	PAGE	SERIAL NO. CUT	REV.
Electrical Components - Power Unit	38		
Traction Panel	42	02	Rev. 06/06
Lift/Power Panel	46	02	Rev. 06/06
Freezer/Corrosion Distribution Board	50	01	Rev. 06/06
Distribution Panel	52		
Line Driver	54	03	Rev. 06/06
Contactor	58	15	Rev. 06/06
Contactor	60	05	Rev. 06/06
Control Module	62	01	Rev. 06/06
Control Module - Back	66	01	Rev. 06/06
Accessory Switch Panel	70	02	Rev. 08/06
Connectors	72	01	Rev. 06/06
Control Cable - TT Mast	76		
TT Mast Limit Switches	80		
Flashing Light	84	01	Rev. 06/06
Overhead Console	86	04	Rev. 10/06
Mast Mounted Lights	90	01	Rev. 05/06
Strobe Light	92	10	Rev. 06/06
BRAKE SYSTEM	PAGE	SERIAL NO. CUT	REV.
Brake Pedal	96	02	Rev. 06/06
Brake	98	02	Rev. 06/06
STEERING	PAGE	SERIAL NO. CUT	REV.
Steering Gearbox	102	06	Rev. 06/06
Steering Command	106	02	Rev. 10/06
Steering Feedback	108		
Steer Motor	110	02	Rev. 10/06

TABLE OF CONTENTS



LIFTING MECHANISM	PAGE	SERIAL NO. CUT	REV.
TT Mast	114		
Load Wheel	122		
Yoke - TT	12402	Rev. 06/06
Lift Chain - TT Mast	126		
CYLINDERS	PAGE	SERIAL NO. CUT	REV.
Mast Cylinder	132		
Free Lift Cylinder - TT	134		
PLATFORM	PAGE	SERIAL NO. CUT	REV.
Fork	13803	Rev. 10/06
Platform Height Sensor	14002	Rev. 10/06
Side Gates	14201	Rev. 06/06
Pallet Grab	14801	Rev. 06/06
Operator Side	152		
TT Mast Side/Underside	158		
Rear Gates	164		
MISCELLANEOUS	PAGE	SERIAL NO. CUT	REV.
Accessories	17001	Rev. 09/06
Platform Load Deck	17201	Rev. 08/06
Aisle Guide Wheels	174		
Labels and Decals	188		



COVERS



COVERS

Power Unit

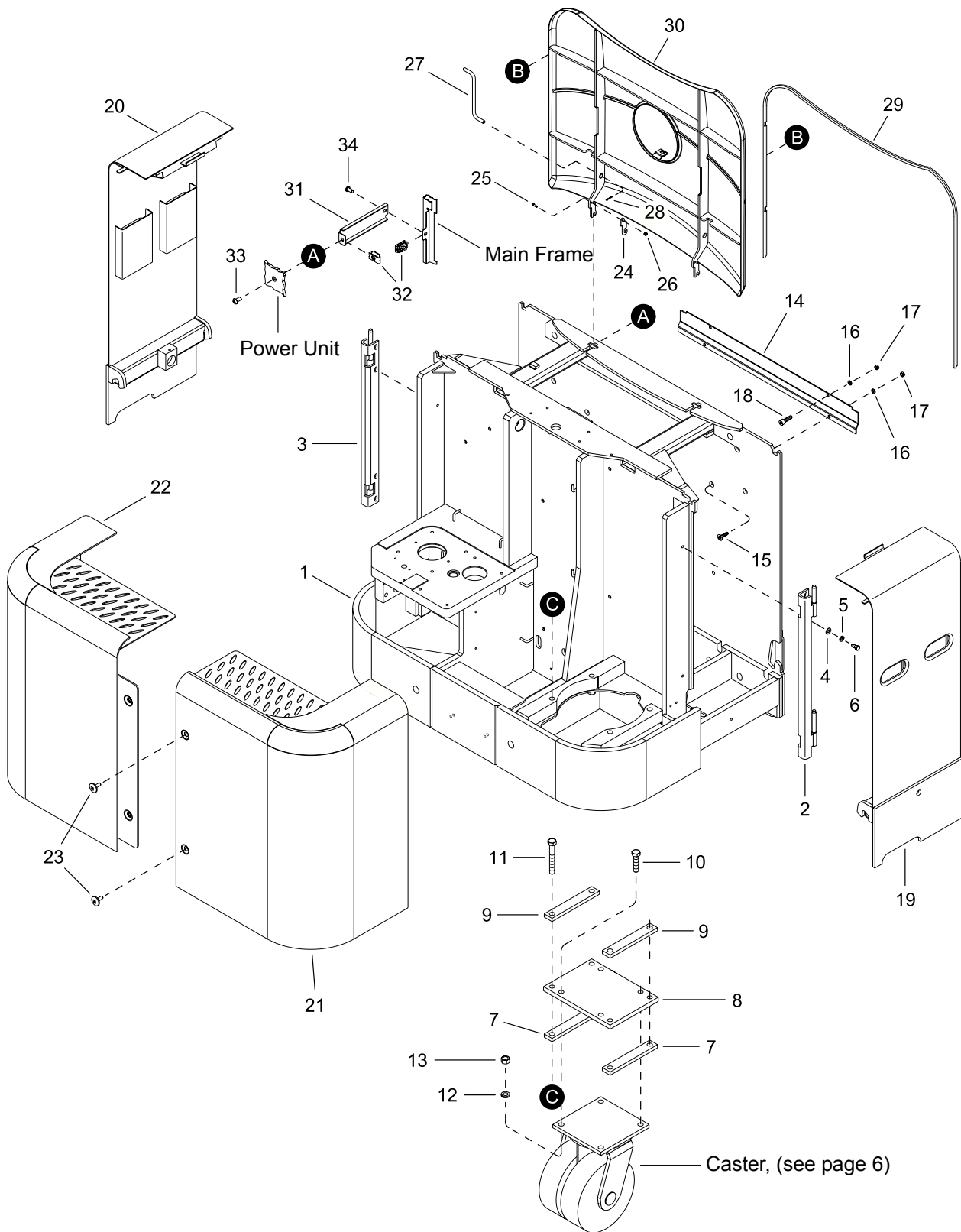


Figure 14150



COVERS

Power Unit

INDEX	PART NUMBER	PART NAME	NUMBER REQUIRED
1	137035	Frame	1
2	117674	Hinge	1
3	117675	Hinge	1
4	060030-026	Flatwasher	4
5	060005-009	Lockwasher	4
6	060017-019	Screw	2
7	088467	Shim	8
8	081607	Plate	1
9	081609	Shim	2
10	060020-031	Screw	4
11	060020-009	Screw	4
12	060005-014	Lockwasher	4
13	060021-015	Nut	4
14	118328	Guide	1
15	060016-015	Screw	2
16	060005-008	Lockwasher	4
17	060021-009	Nut	4
18	060016-028	Screw	2
19	137463-001	Cover	1
20	137462-001	Cover	1
21	134880	Door	1
22	134882	Door	1
23	115453	Screw	2
24	130938	Retainer	2
25	060014-059	Screw	2
26	060042-016	Nut	2
27	117910	Bar	1
28	060038-006	Cotter Pin	1
29	130900-001	Edge	1
30	130544-005	Cover	1
31	130821	Cover	1
32	060031-012	Nut	2
33	060016-015	Screw	1
34	060016-031	Screw	1

Always Specify Model, Data & Serial Number

BUY NOW

**Then Instant Download
the Complete Manual
Thank you very much!**