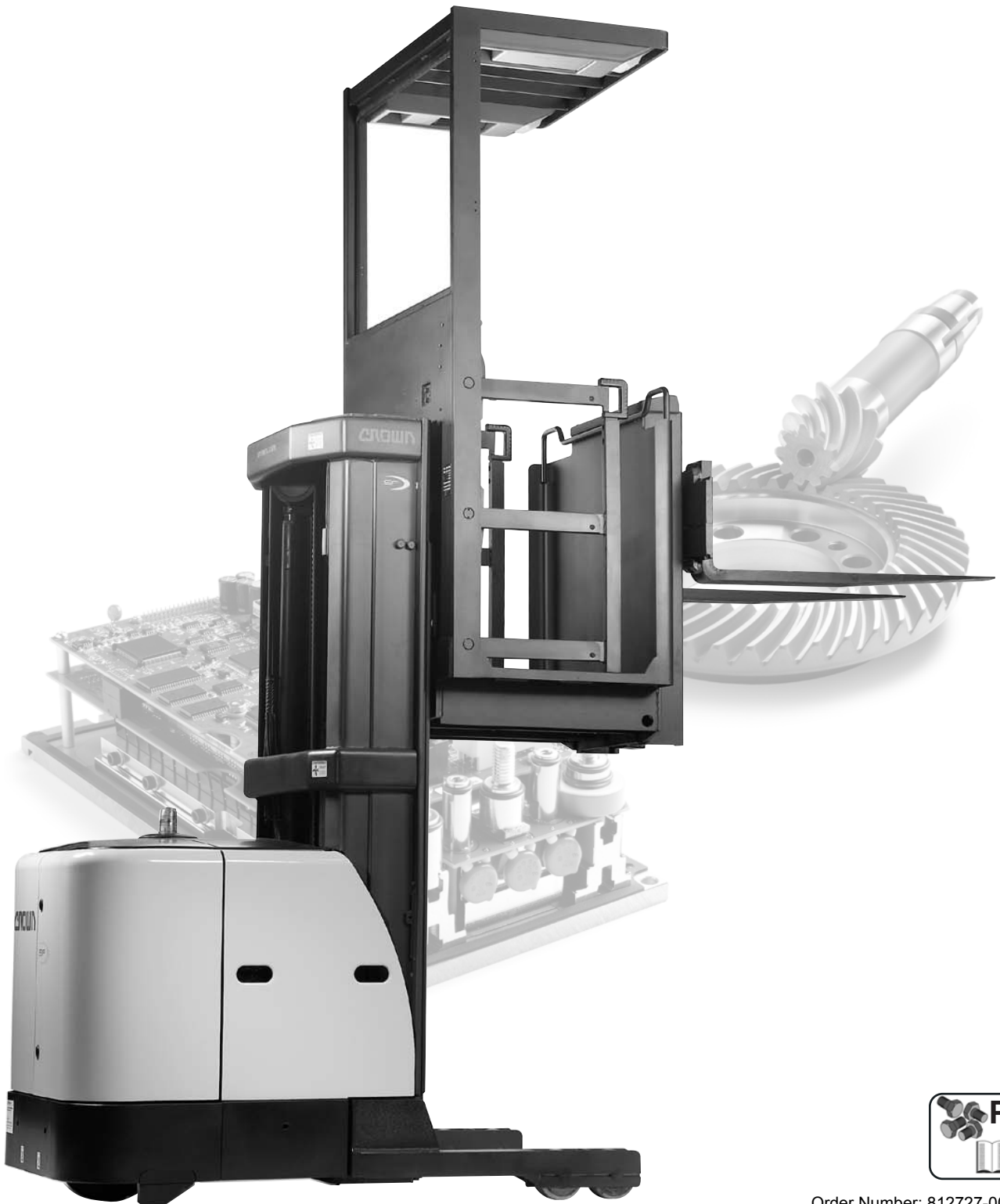




SP 3400 Series Parts Manual



Order Number: 812727-006
Revision: A • Printed in Germany

CROWN



TABLE OF CONTENTS

TABLE OF CONTENTS

COVERS	PAGE	SER-NR. CUT	REV.
Covers	2		
Covers	4		
Battery / Retainers	6		
 HYDRAULIC SYSTEM	 PAGE	 SER-NR. CUT	 REV.
Power Unit - One Speed Lift	10		
Power Unit - One Speed Lift	12		
Power Unit - Two Speed Lift	14		
Power Unit - Two Speed Lift	16		
Mast	18		
Mast with Lifting Fork	20		
mast with Lifting Fork	22		
Platform / Lifting Fork	24		
Pump	26		
Pump Motor	28		
Pump Motor - Temperature & Brush Wear Sensors	30		
Valve Block - One Speed Lift	32		
Valve Block - Two Speed Lift	34		
Valve Block - One Speed Lift with Auxiliary Lift	36		
Valve Block - one speed lift with auxiliary lift	38		
Valve Block - Two Speed Lift with Auxiliary Lift	40		
Valve Block - two speed lift with auxiliary lift	42		
 DRIVE UNIT	 PAGE	 SER-NR. CUT	 REV.
Drive Unit	46		
Drive Unit	48		
Drive Unit	50		
Drive Unit / Lubrication System	52		
Drive Motor	54		
Drive Motor	56		
Drive Tire	58		
 ELECTRICAL SYSTEM	 PAGE	 SER-NR. CUT	 REV.
Electrical Components - Power Unit	62		
Electrical Components - Power Unit	64		
Traction Panel	66		
Traction Panel	68		
Wire Guidance	70		
Distribution Panel	72		
Lift / Power Panel	74		
Freezer / Corrosion Distribution Board	76		
Line Driver	78		
Line Driver	80		
Pump Contactor	82		
Emergency Disconnect Contactor	84		
Control Module	86		
Control Module	88		
Control Module - Back	90		
Control Module - Back	92		

TABLE OF CONTENTS



Switch Panel	94		
Switch Panel	96		
Switch Panel	98		
Control Cable - TL Mast	100		
Control Cable - TL Mast	102		
Control Cable - TT Mast	104		
Control Cable - TT Mast	106		
Height Sensor	108		
Connectors	110		
Connectors	112		
Flashing Light	114		
Overhead Console	116		
Overhead Console	118		
Mast Mounted Lights	120		
Strobe Light	122		
BRAKE SYSTEM	PAGE	SER-NR. CUT	REV.
Brake Pedal	126		
Brake	128		
STEERING	PAGE	SER-NR. CUT	REV.
Steering Gearbox - Part 1 - 2	132		
Steering Gearbox - Part 2 - 2	134		
Steering Command	136		
Steering Feedback	138		
Steer Motor	140		
LIFTING MECHANISM	PAGE	SER-NR. CUT	REV.
Mast - TL Part 1 - 3	144		
Mast - TL Part 2 - 3	146		
Mast - TL Part 3 - 3	148		
Mast - TT Part 1 - 3	150		
Mast - TT Part 2 - 3	152		
Mast - TT Part 3 - 3	154		
CYLINDERS	PAGE	SER-NR. CUT	REV.
Lifting Fork Cylinder	158		
PLATFORM	PAGE	SER-NR. CUT	REV.
Fork	162		
Operator Side Part 1- 2	164		
Operator Side Part 1- 2	166		
Operator Side Part 2 - 2	168		
TL Mast Side / Underside Part 1 - 2	170		
TL Mast Side / Underside Part 2 - 2	172		
TT Mast Side / Underside Part 1 - 3	174		
TT Mast Side / Underside Part 2- 3	176		
TT Mast Side / Underside Part 3- 3	178		
Pallet Grab Part 1 - 2	180		
Pallet Grab Part 2- 2	182		
Fork Carriage / Forks	184		
Lifting Fork Control Module	186		

TABLE OF CONTENTS



MISCELLANEOUS	PAGE	SER-NR. CUT	REV.
Work Assist Accessories	190		
Aisle Guide Wheels	192		
Aisle Guide Wheels	194		
Platform Load Deck	196		
Labels and Decals	198		
Labels and Decals	200		

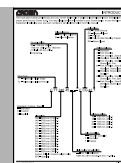
CROWN



COVERS

INDEX	PART NUMBER	PART NAME	NUMBER REQUIRED
1	130656-004	Power Unit	1
2	130440	R.H. Door	1
3	130439	L.H. Door	1
4	115453	Latch Screw	2
5	*	L.H. Skid (Shown)	1
6	*	Screw	
	*	Screw	
	*	Flatwasher	
	*	Lockwasher	
	*	Nut	
7	117674	L.H. Hinge (Shown)	1
	117675	R.H.Hinge	1
8	060017-019	Screw	4
	060030-026	Flatwasher	4
	060005-009	Lockwasher	4
9	130209-001*	L.H. Narrow Battery Cover	1
	130302-001*	L.H. Wide Battery Cover (Shown)	1
	130208-001*	R.H. Narrow Battery Cover	1
	130437-001*	R.H. Wide Battery Cover	1
10	118328	Guide	1
11	060016-015	Screw	2
	060005-008	Lockwasher	2
	060021-009	Nut	2
12	117910	Prop Bar	1
	060038-006	Cotter Pin	1
13	130938	Retainer	2
	060014-059	Screw	2
	060042-016	Nut	2
14	130900-001	Edge Trim	1
15	130821	Wire Cover	1
16	060031-012	Nut	2
17	060016-015	Screw	1
18	060016-031	Screw	1
19	130544-001	Gray Top Cover	1
	130544-003	Beige Top Cover	1
20	060016-015	Screw	2
	060021-073	Nut	2
21	060016-028	Screw	2
	060005-008	Lockwasher	2
	060021-009	Nut	2

* To select appropriate part number, refer to truck data number.
 The truck data number represents truck features.
 Refer to Introduction.



BUY NOW

**Then Instant Download
the Complete Manual
Thank you very much!**