



WD2300 SERIES PARTS MANUAL



Order Number: 812712-006
Revision: B • Printed in Germany

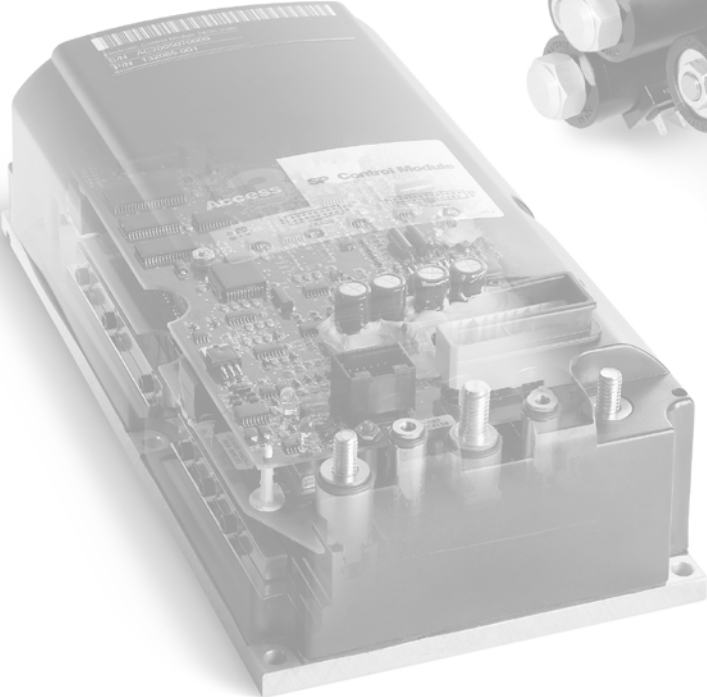
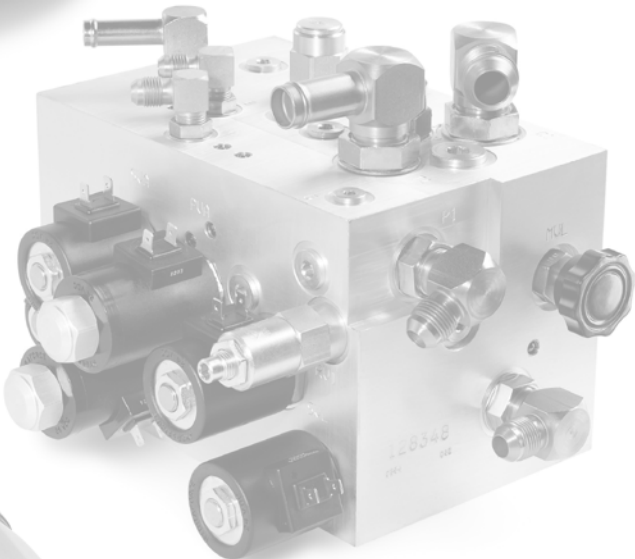


TABLE OF CONTENTS





TABLE OF CONTENTS

TABLE OF CONTENTS

INTRODUCTION	PAGE	SERIAL NO. CUT	REV.
Important customer information	3		
Subsequent Attachments and Modifications made to the Truck	3		
Ordering Spare Parts	3		
Using the Manual	3		
Models	4		
COVERS	PAGE	SERIAL NO. CUT	REV.
Cover/Platform Part 1 - 3	6	01	Rev. 07/06
Covers Part 2 - 3	8		
Covers Part 3 - 3	10	01	Rev. 07/06
Caster Wheel	12		
HYDRAULIC SYSTEM	PAGE	SERIAL NO. CUT	REV.
Tube/Hose Layout Part 1 - 1	16		
Tube/Hose Layout Part 1 - 1	18		
Tube/Hose Layout Part 2 - 2	20		
DRIVE UNIT	PAGE	SERIAL NO. CUT	REV.
Drive Unit	24		
Gearbox	26		
Drive Motor	28		
Knuckle	30		
Knuckle/Platform	32		
ELECTRICAL SYSTEM	PAGE	SERIAL NO. CUT	REV.
Electrical Parts	36		
Electrical Parts Part 1 - 2	38	01	Rev. 07/06
Electrical Parts Part 1 - 2	40	01	Rev. 07/06
Electrical Parts 2 - 2	42	01	Rev. 07/06
Contactor	44		
Control Handle Part 1 - 2	46	01	Rev. 07/06
Control Handle Part 2 - 2	48		
Control Handle Part 2 - 2	50		
Emergency Disconnect/Battery Connector	52		
Instrument	54	01	Rev. 07/06
Horn	56		
BRAKE SYSTEM	PAGE	SERIAL NO. CUT	REV.
Brake	60		
LIFTING MECHANISM	PAGE	SERIAL NO. CUT	REV.
Mast	64	01	Rev. 07/06
Fork Carriage	66		
Mast Safety Screen	68		
Lift Structure	70		
Load Backrest	72		

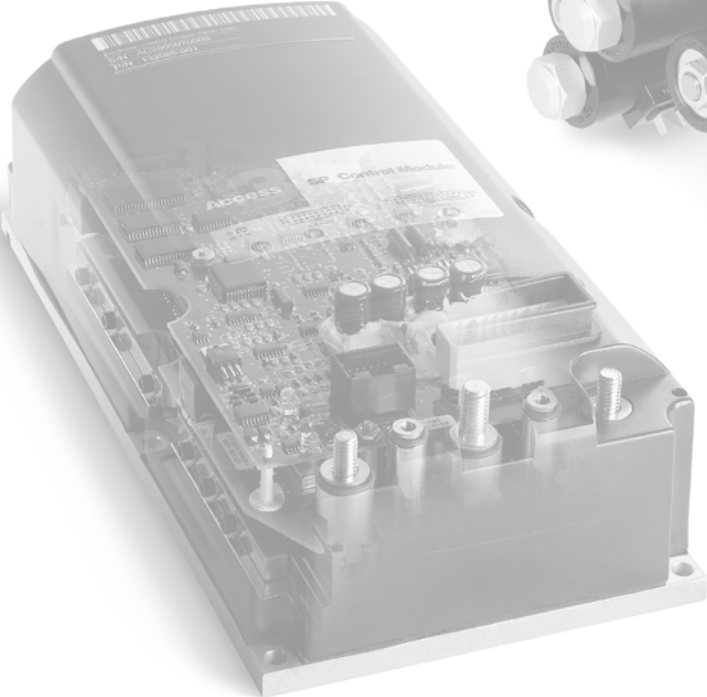
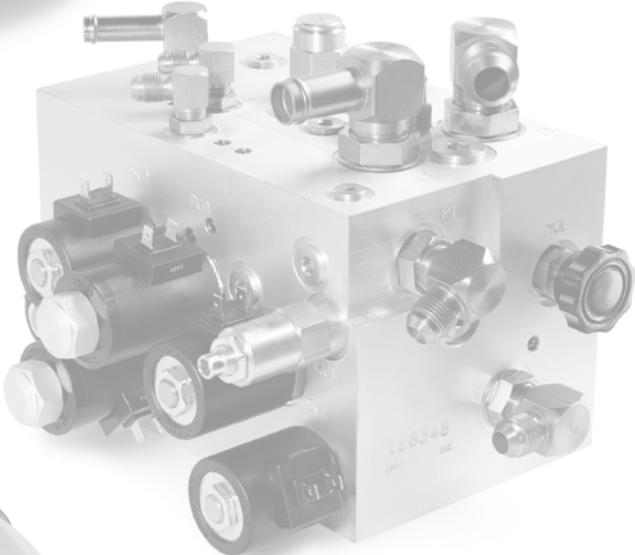
TABLE OF CONTENTS



CYLINDERS	PAGE	SERIAL NO. CUT	REV.
Lift Cylinder	76		
Free Lift Cylinder	78		

PLATFORM	PAGE	SERIAL NO. CUT	REV.
Platform Part 1 - 2	82	01	Rev. 07/06
Platform Part 2 - 2	84		

MISCELLANEOUS	PAGE	SERIAL NO. CUT	REV.
Labels and Decals	88		



INTRODUCTION

Important customer information

To ensure the safety of the truck, you, the customer, must only carry out maintenance and repairs as stipulated in the operator manual.

Any additional work must be performed by Crown authorised service technicians. Authorised service technicians have the required expertise and up-to-date service information.

If you wish to have your own technicians trained, please contact Crown for relevant training courses.

Subsequent Attachments and Modifications made to the Truck



DANGER

Any proposed modification which would alter the original condition of the truck when delivered, must first be assessed and approved in writing by Crown Gabelstapler GmbH.

- *The net weight and position of attachments may considerably affect the capacity and other truck characteristics.*
- *Changing the electrical system or adding electrically operated components may result in operating faults.*

Modifications which have not been assessed may result in fatal accidents!

Ordering Spare Parts

The maintenance manual does not cover spare parts. These are listed in a separate parts manual.

Spare parts can be ordered by quoting:

- The truck specification number
- The truck model number

The truck serial number This information can be found on the truck's data plate. Only if this information is provided can the order be processed quickly, correctly and reliably.

Please refer to the Technical Specifications Sheet for the utilisable loads, technical data and dimensions for

this series. Brochures can be obtained from your CROWN dealer or from the following address:

CROWN Gabelstapler GmbH & Co.KG
 Moosacher Str. 52
 80809 Munich
 GERMANY

Tel.: +49 (0)89 / 93 002 -0
 Fax: +49 (0)89 / 93 002 -175 or133

Using the Manual

The manual is divided into chapters. The following table shows how the manual is structured.

Manual Structure	
Chapter	Content
ITD	Introduction
1	Covers
2	Hydraulic System
3	Drive Unit
4	Electrical System
5	Brake System
6	Steering
7	Lifting Mechanism
8	Cylinders
9	Platform
10	Miscellaneous

INTRODUCTION

Models

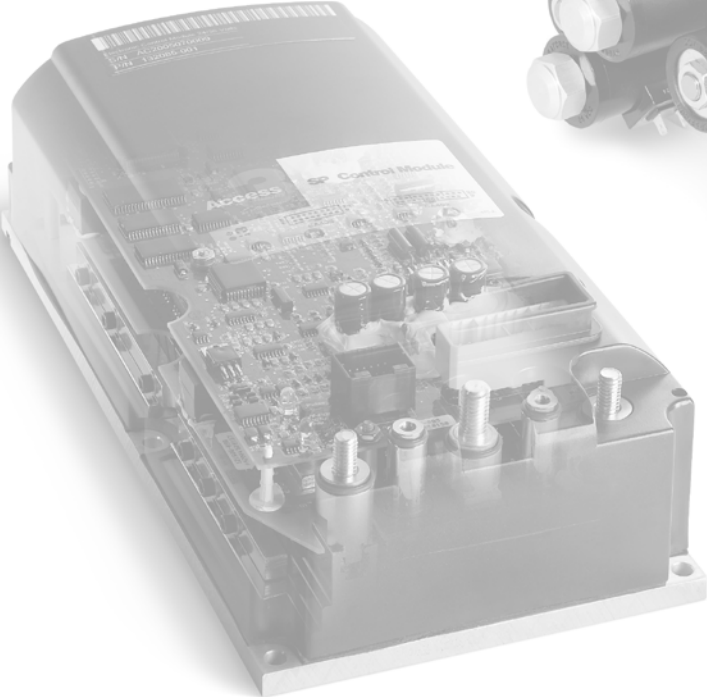
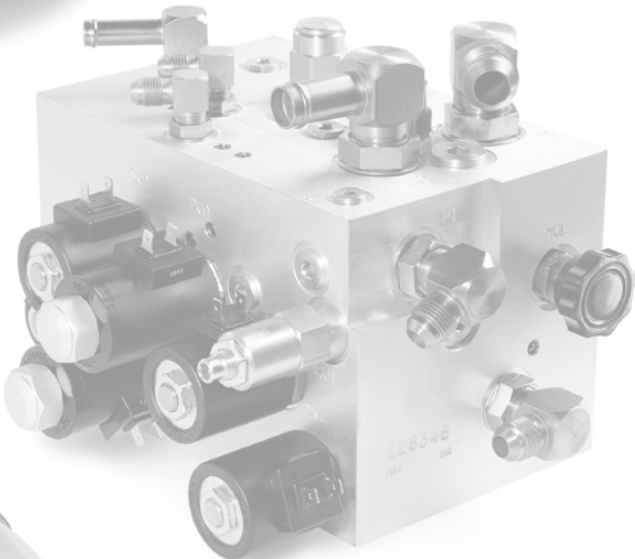


Models

Describes the following models:

WD2300

WD2300S

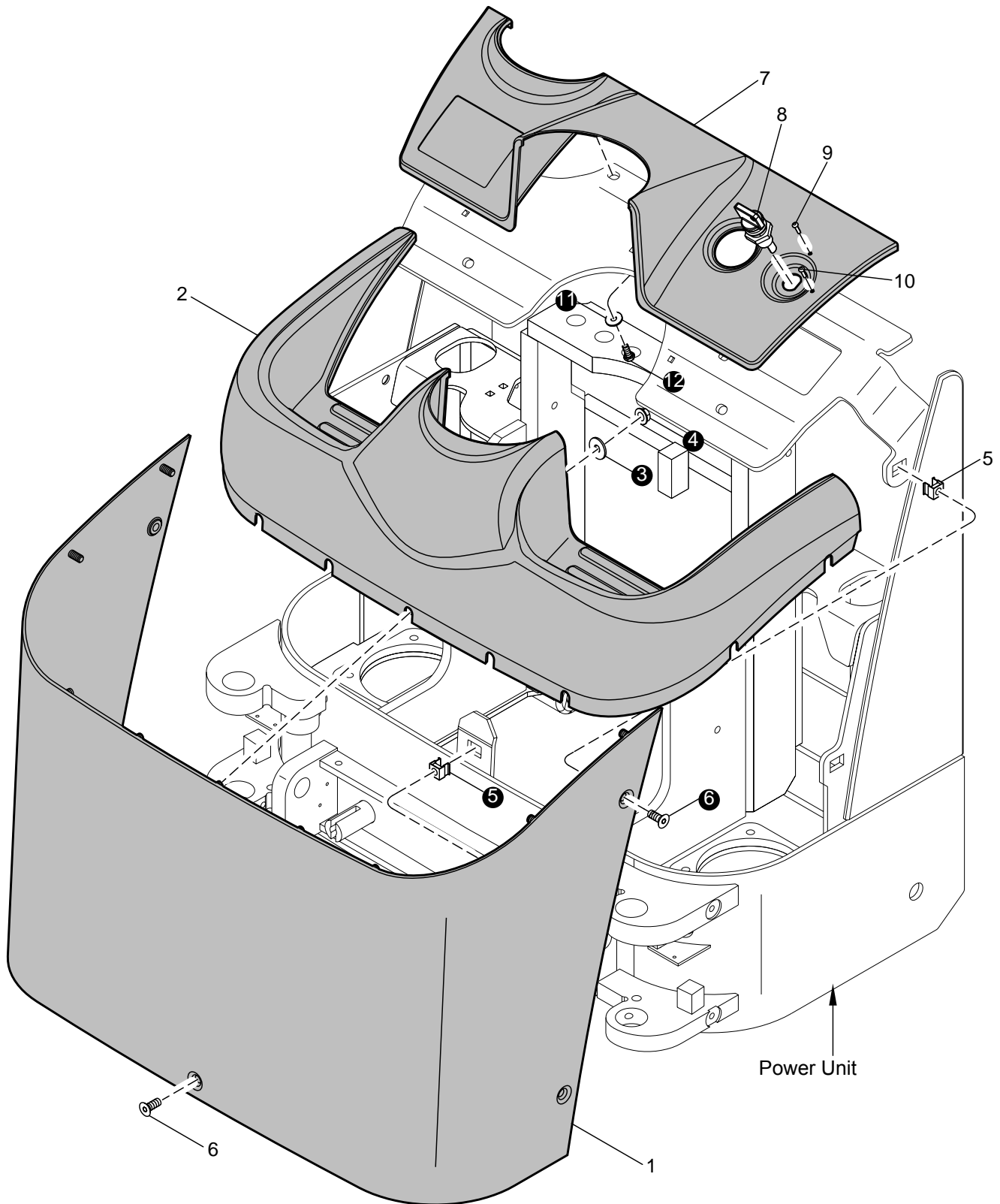


COVERS



COVERS

Cover/Platform Part 1 - 3



MP-3400-009



COVERS

Cover/Platform Part 1 - 3

INDEX	PART NUMBER	PART NAME	NUMBER REQUIRED
1	807575	Cover.	1
2	807379	Cover.	1
3	050009-020	Washer.	9
4	050068-003	Nut.	9
5	804863-007	Cage Nut.	5
6	050003-035	Screw.	5
7	807380	Cover.	1
8	816156	Key Switch (Assembly)	1
9	109127-003	Clip Arrow (red)	1
10	109127-001	Clip Arrow (green)	1
11	050009-013	Washer.	5
12	050006-024	Screw.	5
	807574	Cover (Assembly/including 1 - 4)	1
	807651	Cover (Assembly/including 7 - 10)	1

Always Specify Model, Data & Serial Number

BUY NOW

**Then Instant Download
the Complete Manual
Thank you very much!**