



WE/WS2300 SERIES PARTS MANUAL



Order Number: 812689-006
Revision: B • Printed in Germany

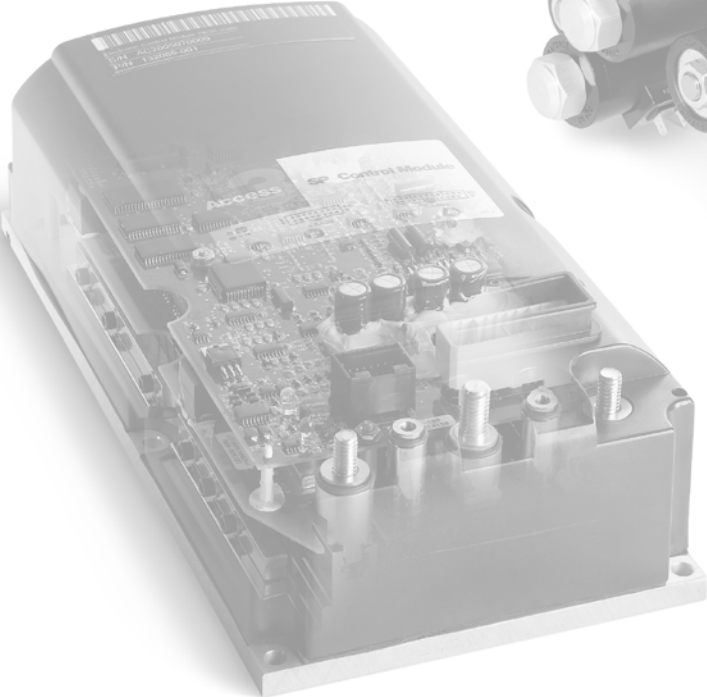
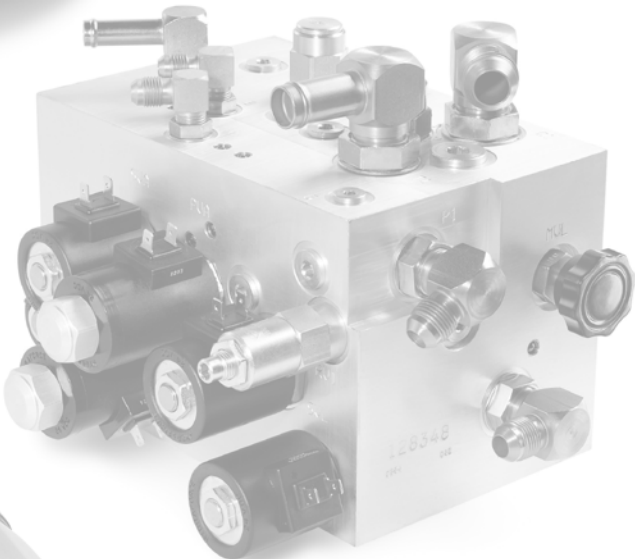


TABLE OF CONTENTS

Notes:



TABLE OF CONTENTS

TABLE OF CONTENTS

INTRODUCTION	PAGE	SERIAL NO. CUT	REV.
Important customer information	3		
Subsequent Attachments and Modifications made to the Truck	3		
Ordering Spare Parts	3		
Using the Manual	3		
Models	4		

COVERS	PAGE	SERIAL NO. CUT	REV.
Frame and Pivoting Carriage	6	5A134880	
Frame and Pivoting Carriage	8	5A134882	
Covers	10	5A134880	
Covers / Platform	12	5A134880	
Covers	14	5A134882	
Load Wheel	16		
Castor Wheel	18		

HYDRAULIC SYSTEM	PAGE	SERIAL NO. CUT	REV.
Power Unit Hydraulic Part 1 - 2	22	5A134880	01 Rev. 05/06
Power Unit Hydraulic Part 2- 2	24	5A134880	
Power Unit Hydraulic	26	5A134882	
Power Unit Hydraulic	28	5A134882	
Power Unit Auxiliary Hydraulic	30	5A134882	
Hydraulic TL Mast 1.25t/1.35t	32	5A134880	
Hydraulic TL Mast 1.4t/1.6t/1.8t	34	5A134880	
Hydraulic TL Mast	36	5A134882	
Auxiliary Hydraulic TL Mast	38	5A134880	
Auxiliary Hydraulic TL Mast	40	5A134880	
Auxiliary Hydraulic TL Mast	42	5A134882	
Hydraulic TF Mast 1.25t/1.35t	44	5A134880	
Hydraulic TF Mast 1.4t/1.6/1.8t	46	5A134880	
Hydraulic TF Mast	48	5A134882	
Hydraulic TT Mast	50	5A134880	
Hydraulic TT Mast	52	5A134880	
Hydraulic TT Mast	54	5A134882	
Auxiliary Hydraulic TT Mast Part 1 - 2	56	5A134880	
Auxiliary Hydraulic TT Mast Part 1 - 2	58	5A134882	
Auxiliary Hydraulic TT Mast Part 2 - 2	60	5A134880	
Auxiliary Hydraulic TT Mast Part 2 - 2	62	5A134880	
Auxiliary Hydraulic TT Mast	64	5A134882	
Pump Motor 1.25t/1.35t	66	5A134880	
Pump Motor 1.4t/1.6t/1.8t	68	5A134880	

DRIVE UNIT	PAGE	SERIAL NO. CUT	REV.
Drive Unit	72		01 Rev. 05/06
Gearbox	74		01 Rev. 05/06
Drive Motor	76		
Knuckle	78	5A134880	
Knuckle	80	5A134882	
Knuckle - Platform	82	5A134880	
Knuckle - Platform	84	5A134882	

TABLE OF CONTENTS



Drive Tires	86		
ELECTRICAL SYSTEM			
Connector Housing	90		
Electrical System Part 1 - 3	92	5A134880	
Electrical System Part 1 - 3	94	5A134880	
Electrical System Part 2 - 3	96	5A134880	
Electrical System Part 3- 3	98	5A134880	
Electrical System	100	5A132188	
Electrical System Part 1 - 2	102	5A134882	
Electrical System Part 1 - 2	104	5A134882	
Electrical System Part 2- 2	106	5A134882	
Pump Contactor	108		
Travel Contactor	110		
Travel Contactor - Platform	112	5A134882	
Tiller Part 1 - 2	114	March 2004	01 Rev. 05/06
Tiller Part 1 - 2	116	April 2004	02 Rev. 05/06
Tiller Part 2 - 2	118		01 Rev. 05/06
Tiller Part 2 - 2	120		01 Rev. 05/06
Emergency Disconnect	122		01 Rev. 05/06
Battery Connector	124		
Charger	126	5A134880	
Charger	128	5A134882	
Gage	130		
Flashing Light / Travel Alarm	132		
TL Mast Cable / Accessory Hydraulics	134	5A134880	
TT Mast Cable / Accessory Hydraulics	136	5A134880	
Horn	138		
BRAKE SYSTEM			
Brake	142		01 Rev. 05/06
STEERING			
Steering Column	146	5A134880	01 Rev. 05/06
Steering Column	148	5A134882	
LIFTING MECHANISM			
Mast Switch	152		
TL Mast 1.25t/1.35t	154		
TL Mast 1.25t/1.35t	156		
TL Mast 1.4t/1.6t/1.8t	158	5A134880	
TL Mast 1.4t/1.6t/1.8t	160	5A134880	
TL Mast 1.4t/1.6t/1.8t	162	5A134882	
TL Mast 1.4t/1.6t/1.8t	164	5A134882	
TF Mast 1.25t/1.35t	166		
TF Mast 1.25t/1.35t	168		
TF Mast 1.4t/1.6t/1.8t	170		
TF Mast 1.4t/1.6t/1.8t	172		
TT Mast Part 1 - 2	174	5A134880	
TT Mast Part 1 - 2	176	5A134880	
TT Mast Part 2 - 2	178	5A134880	
TT Mast Part 2 - 2	180	5A134880	
TT Mast Part 1 - 2	182	5A134882	

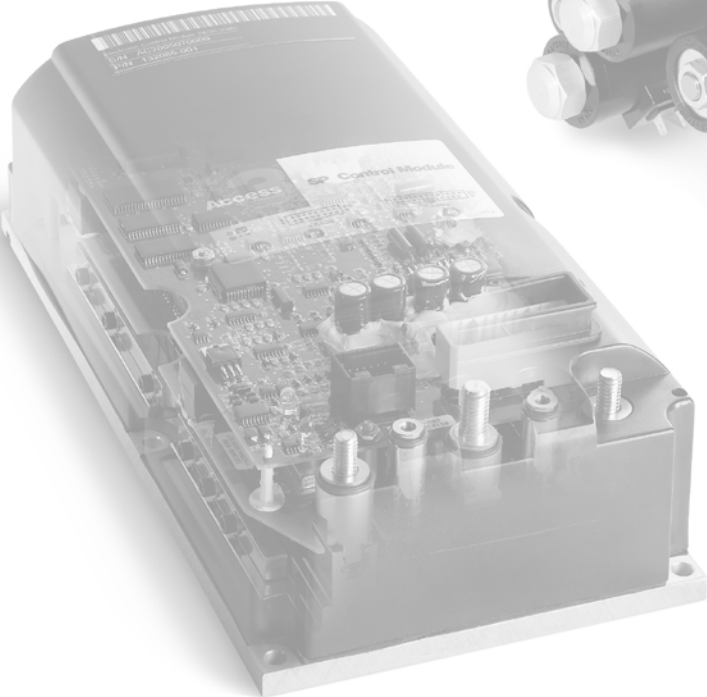
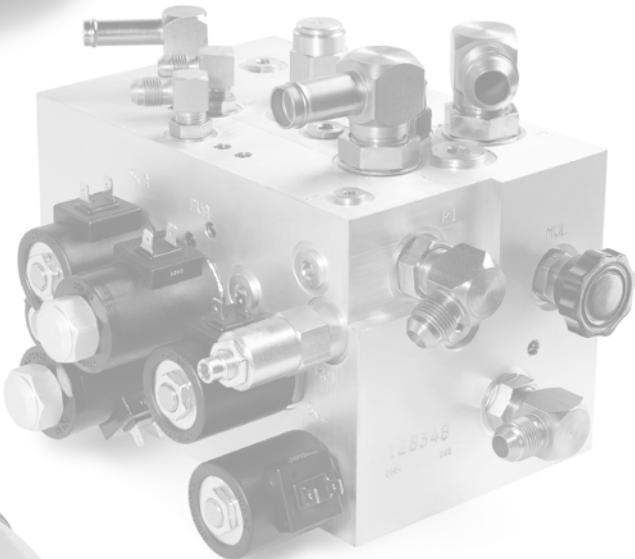


COVERS

INDEX	PART NUMBER	PART NAME	NUMBER REQUIRED	
	TT Mast Part 1 - 2	184	5A134882
	TT Mast Part 2 - 2	186	5A134882
	TT Mast Part 2 - 2	188	5A134882
	Fork Carriage 1.25t	190	01 Rev. 05/06
	Fork Carriage 1.4t & 1.6t	192	01 Rev. 05/06
	Fork Carriage 1.35t	194	
	Fork Carriage 1.4t & 1.8t	196	01 Rev. 05/06
	Safety Shield/ Safety Grille	198	
	Safety Shield / Safety Grille	200	
	Safety Shield / Safety Grille	202	
	Load Backrest	204	
CYLINDERS			PAGE	SERIAL NO. CUT REV.
	Lift Cylinder TL Mast 1.25t/1.35t	208	
	Lift Cylinder TL/TT Mast 1.4t/1.6t/1.8t	210	
	Lift Cylinder TF Mast 1.25t/1.35t	212	
	Lift Cylinder TF Mast 1.4t/1.6t/1.8t	214	
	Free Lift Cylinder TF Mast 1.25t/1.35t	216	
	Free Lift Cylinder TF/TT Mast 1.4t/1.6t/1.8t	218	
PLATFORM			PAGE	SERIAL NO. CUT REV.
	Platform Part 1 - 2	222	01 Rev. 05/06
	Platform Part 2 - 2	224	01 Rev. 05/06
MISCELLANEOUS			PAGE	SERIAL NO. CUT REV.
	Labels and Decals	228	
	Labels and Decals Platform	230	

Always Specify Model, Data & Serial Number

Notes:



INTRODUCTION



Notes:

Important customer information

To ensure the safety of the truck, you, the customer, must only carry out maintenance and repairs as stipulated in the operator manual.

Any additional work must be performed by Crown authorised service technicians. Authorised service technicians have the required expertise and up-to-date service information.

If you wish to have your own technicians trained, please contact Crown for relevant training courses.

Subsequent Attachments and Modifications made to the Truck



DANGER

Any proposed modification which would alter the original condition of the truck when delivered, must first be assessed and approved in writing by Crown Gabelstapler GmbH.

- *The net weight and position of attachments may considerably affect the capacity and other truck characteristics.*
- *Changing the electrical system or adding electrically operated components may result in operating faults.*

Modifications which have not been assessed may result in fatal accidents!

Ordering Spare Parts

The maintenance manual does not cover spare parts. These are listed in a separate parts manual.

Spare parts can be ordered by quoting:

- The truck specification number
- The truck model number

The truck serial number This information can be found on the truck's data plate. Only if this information is provided can the order be processed quickly, correctly and reliably.

Please refer to the Technical Specifications Sheet for the utilisable loads, technical data and dimensions for

this series. Brochures can be obtained from your CROWN dealer or from the following address:

CROWN Gabelstapler GmbH & Co.KG
Moosacher Str. 52
80809 Munich
GERMANY

Tel.: +49 (0)89 / 93 002 -0
Fax: +49 (0)89 / 93 002 -175 or133

Using the Manual

The manual is divided into chapters. The following table shows how the manual is structured.

Manual Structure	
Chapter	Content
ITD	Introduction
1	Covers
2	Hydraulic System
3	Drive Unit
4	Electrical System
5	Brake System
6	Steering
7	Lifting Mechanism
8	Cylinders
9	Platform
10	Miscellaneous

INTRODUCTION

Models



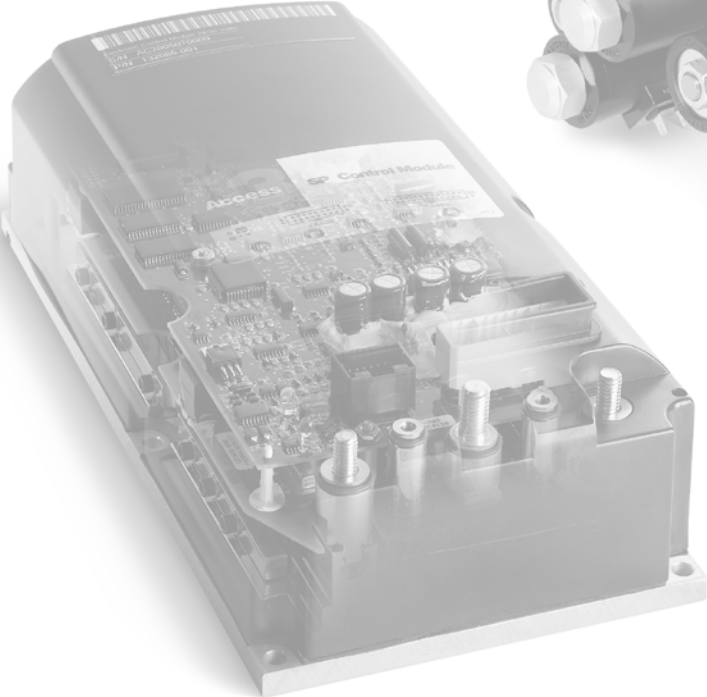
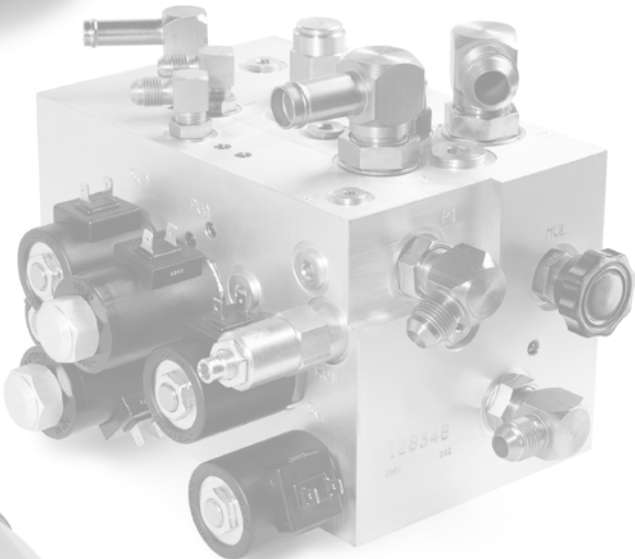
Models

Describes the following models:

WE2300

WE2300S

WS2300



COVERS

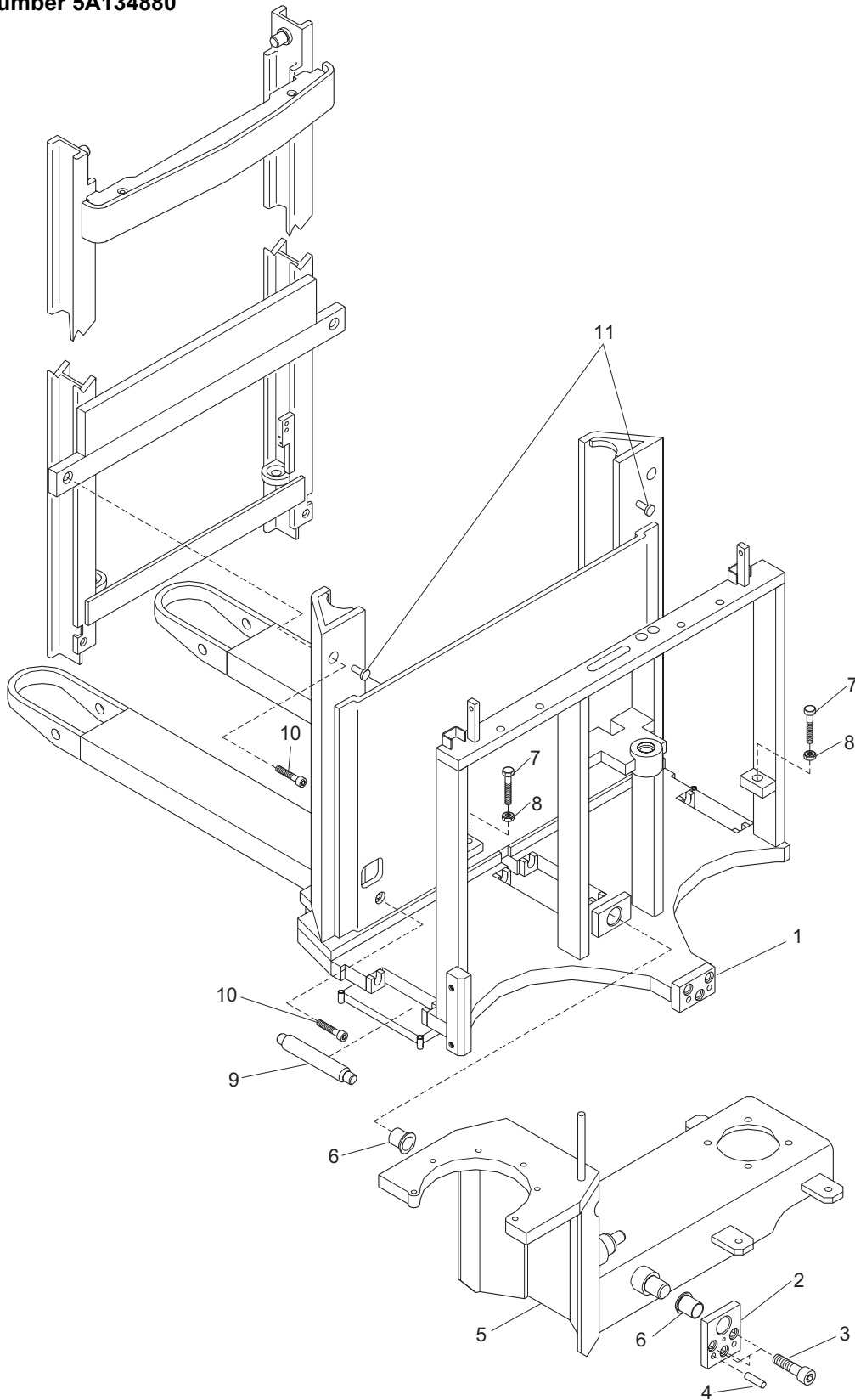


COVERS

FRAME AND PIVOTING CARRIAGE



To serial number 5A134880



M0602



COVERS

FRAME AND PIVOTING CARRIAGE

INDEX	PART NUMBER	PART NAME	NUMBER REQUIRED
1	802884-002*	Frame Assembly (1.25t TL/TF)	1
	803501-002*	Frame Assembly (1.6t TL/TF)	1
	803501-003*	Frame Assembly (1.6t TT)	1
	806061-001*	Frame Assembly (1.4t TL/TF - Platform)	1
	806061-002*	Frame Assembly (1.4t TT - Platform)	1
	806061-003*	Frame Assembly (1.25t TL/TF - Platform)	1
	802884-001-01*	Frame Assembly (1.35t/width 864 mm)	1
	802884-001-02*	Frame Assembly (1.35t/width 1067 mm)	1
	802884-001-03*	Frame Assembly (1.35t/width 1270 mm)	1
	803501-001-01*	Frame Assembly (1.8t/width 864 mm)	1
	803501-001-02*	Frame Assembly (1.8t/width 1067 mm)	1
	803501-001-03*	Frame Assembly (1.8t/width 1270 mm)	1
	806061-004-01*	Frame Assembly (Platform - width 864 mm)	1
	806061-004-02*	Frame Assembly (Platform - width 1067 mm)	1
	806061-004-03*	Frame Assembly(Platform - width 1270 mm)	1
2	803027	Bracket	1
3	050005-037	Screw	3
4	050052-004	Pin, Roll	2
5	802746	Pivoting Carriage	1
6	803057	Bushing	2
7	050006-071	Screw	2
8	050008-050	Nut	2
9	803198-001	Battery Rollers	4
	803198-002	Battery Rollers (Freezer/Corrosion)	4
10	050051-004	Screw	4
11	803043	Shaft (welded on)	2
	053002-001	Grease	AR
	053002-005	Grease (Freezer/Corrosion)	AR

* To select appropriate part number, refer to truck data number.
 The truck data number represents truck features.
 Refer to Introduction.

Always Specify Model, Data & Serial Number

BUY NOW

**Then Instant Download
the Complete Manual
Thank you very much!**