

CROWN

WE WS



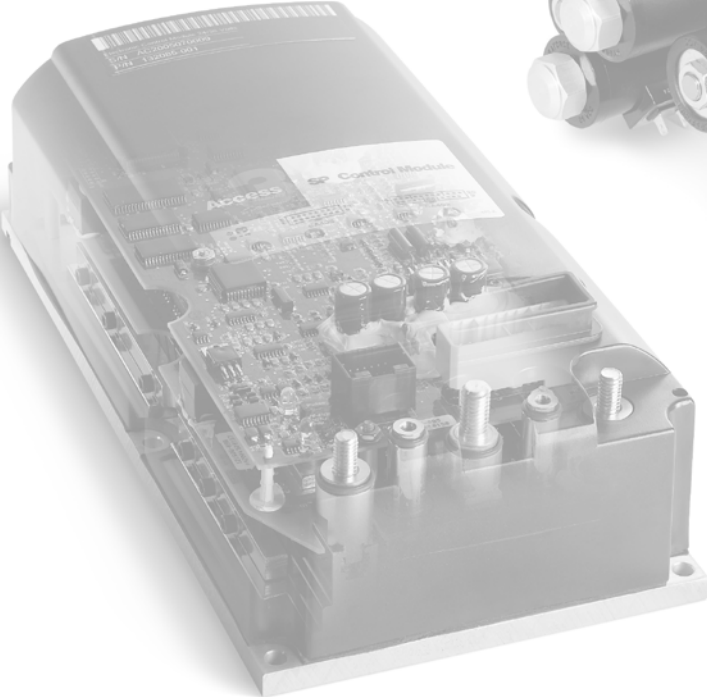
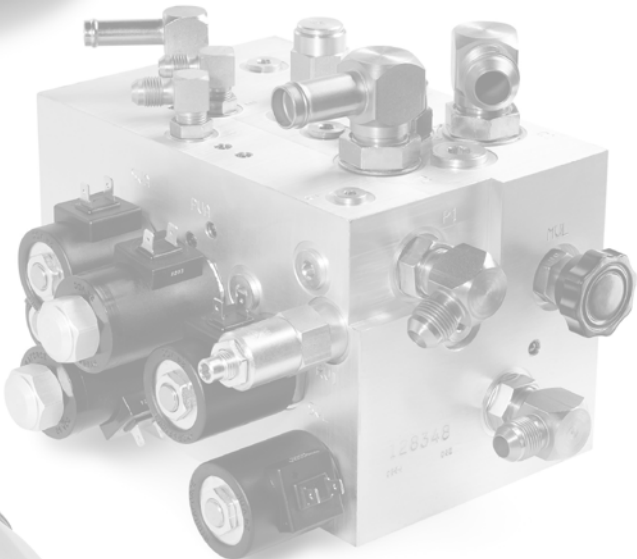


TABLE OF CONTENTS



Notes:



TABLE OF CONTENTS

TABLE OF CONTENTS

SAFETY	PAGE	SERIAL NO. CUT	REV.
Symbols Used	3		
Safety Symbols	3		
General Symbols	3		
Fork direction	3		
General Safety Instructions	4		
Maintenance and Repair Instructions	4		
Maintenance and Repairs	4		
Before Parking the Truck	4		
Before Working on the Truck	4		
Before Starting the Truck	4		
Warning and Instruction Decals on the Truck	4		
INTRODUCTION	PAGE	SERIAL NO. CUT	REV.
General	9		
Operator Manual	9		
Service Training	9		
Ordering Spare Parts	9		
Using the Manual	9		
Models	10		
LUBRICATION & ADJUSTMENT	PAGE	SERIAL NO. CUT	REV.
Component Access	13		
Drive Unit Cover	13		
Control Handle	13		
Control Handle Knuckle	13		
Mast	13		
Platform and Side Restraints ⁽²⁾	13		
Component Access	15		
Drive Unit Cover	15		
Control Handle	15		
Control Handle Knuckle	15		
Mast	15		
Platform and side restraints ⁽²⁾	15		
Lifting the Truck	17		
Lifting with a Crane	17		
Lifting with a Forklift Truck	18		
Towing the Truck	19		
Jacking up the Truck	20		
.....	20		
Service	21		
Recommended Lubricants	21		
Cold Store Trucks	21		
Taking the Truck out of Service	21		
Returning the Truck to Service	21		
Recommended Lubricants and Consumables	22		
Inspection and Maintenance Schedule	24		
Daily or Every 8 Service Hours	25		
Safety Reverse Switch Test	27		
Test and Maintenance Interval Chart	28		

TABLE OF CONTENTS



Load Wheels and Castors	34
Single Load Wheel Replacement (WE)	34
Removal	34
Assembly	34
Tandem Load Wheel Replacement (WE)	34
Removal	34
Assembly	35
Tandem Load Wheel Replacement (WS)	35
Removal	35
Assembly	35
Castor (WE/WS)	36
Removal	36
Assembly	36
Castor (WE-S/WS-S)	37
Removal	37
Assembly	37
Castor Suspension (WE/WS)	38
Removal	38
Assembly	38
Castor Suspension (WE-S/WS-S)	39
Removal	39
Assembly	39
Torques	40
Standard Torques	40

	PAGE	SERIAL NO. CUT	REV.
HYDRAULIC SYSTEM			
Hydraulic Schematic Symbols	43		
General Principles	47		
Hydraulic Lines and Ports	47		
Bleeding the Hydraulic System	47		
Drift Test	47		
Lifting:	47		
Pump Unit	48		
Removal	48		
Assembly	49		
Reservoir	50		
Removal	50		
Assembly	50		
Bleeding the Manifold	50		
Replacing the Filter	51		
Removal	51		
Assembly	51		
Valve Block	52		
Removal	52		
Assembly	52		
Valve Block	52		
Relief Valve	53		
Removal	53		
Assembly	53		
Relief Valve Setting	53		
Relief Valve Test and Setting	53		
Hydraulic Pump	54		
Removal	54		
Assembly	54		

Hydraulic System Troubleshooting 55

DRIVE UNIT	PAGE	SERIAL NO. CUT	REV.
Drive Wheel	59		
Removal	59		
Assembly	59		
Drive Unit Removal and Assembly	60		
Removal	60		
Assembly	60		
Gear Unit	61		
Removal	61		
Assembly	61		
Repairing the Gear Unit	63		
Preparation	63		
Dismantling	63		
Assembly	63		
Adjusting the bevel gear set	64		
Oil Change	67		
Draining Oil	67		
Adding Oil	67		
Live Ring Bearing	68		
Removal	68		
Assembly	68		
Pivoting Carriage	69		
General	69		
Removal	69		
Assembly	69		
Adjusting the pivoting carriage	69		
Pivoting Carriage	70		
General	70		
Removal	70		
Assembly	70		
Adjusting the pivoting carriage	70		

ELECTRICAL SYSTEM	PAGE	SERIAL NO. CUT	REV.
General	73		
Wire colour code	73		
Contact Symbol Abbreviations	74		
Electrical wiring diagrams	76		
Electrical Components	78		
Switch	78		
(ALM) Travel alarm	78		
(BBD) Battery connector	78		
(BDI) Unigage	78		
(BRK) Brake	78		
(BRS) Brake switch	78		
(Charger) On-board charger	78		
(Charger) On-board charger	78		
(EDS) Emergency Power Disconnect Switch	78		
(F/R Contactor) Direction contactor	78		
(DR) Travel alarm driver	78		
(FU) Fuses	78		
(GCSR) Gate closed switch right	78		

TABLE OF CONTENTS



(GCSR) Gate closed switch right	79
(GCSL) Gate closed switch left	79
(GCSL) Gate closed switch left	79
(HCM) Hydraulic control module	79
(HM) Horn	79
(HNS) Horn switch	79
(HSS) "Rabbit/Turtle" toggle switch	79
(HYD PCB) Hydraulic printed circuit board	79
(KYS) Key switch	79
(LMS) Limit switch	79
(LMS2) Limit switch	79
(MAIN PCB) Main circuit board	79
(M2) Pump motor	79
(ORS) Override switch	79
(P) Pump contactor	80
(PC) Plug holder	80
(PC) Plug holder	80
(PCB) Distributor PCB	80
(PLM) Platform logic	80
(PLS) Platform switch	80
(PLS) Platform switch	80
(PM / M2) Hydraulic motor	80
(POT, FS, RS) Traction pod	80
(PV) Proportional valve	81
(RAS, LOS1, LOS2) Raise / lower switches	81
Safety reverse switch (SAS)	81
(SLS / SRS) Aux. hydraulics switch	81
SVH Toggle valve	81
(SVA1 / SVA2) Aux. hydraulics valves	81
(THS) Motor thermal switch	81
(TM / M1) Traction motor	81
Component Assembly Locations	82
From serial no. 5A134882	85
From serial no. 5A134882	86
From serial no. 5A134882	87
Traction Controller 1207	88
Functions	88
Key switch	88
Current limit	88
Overvoltage protection	88
Overtemperature protection	88
Performance reduction for low voltage	88
Fault identification	88
Error log	88
Service	89
Control Panel	90
Adjusting potentiometer	90
Programmer connection	90
Status LED	90
Diagnostics with the status LED	90
Traction Controller Error Messages	91
Status LED	91
Error Reset	93
Test Procedure	94

Pulse Monitor Trip Test (PMT)	94
Equipment	94
Test	94
PMT Test Wiring Diagram	95
1307 Programmer	96
General	96
Connection	96
Operation	96
General	96
Key Functions	98
Key Combinations	99
SPECIAL DIAGNOSTIC menu	99
SPECIAL PROGRAM menu	99
1311 Programmer	101
General	101
Operation	101
Menus	102
Main menu	102
Functions	102
Hand Held Unit Settings	102
Traction Controller Settings	103
WE 1.25t/WS 1.35t	103
Traction Controller Type 1207-1115 Setting	103
WE 1.25t/WS 1.35t Platform	103
Traction Controller Type 1207-1144 Setting	103
WE 1.6t/WS 1.8t/WS 1.4 t	104
Traction Controller Type 1207-1115 Setting	104
WE 1.4t Platform / WS 1.4t Platform	104
Traction Controller Type 1207-1144 Setting	104
Programmer Menus	105
"Program" Menu	105
"Test" Menu	106
"Diagnostics" and "Special Diagnostics" Menus	107
"Special Program" Menu	108
BDI / TT	109
Battery Discharge Indicator / Hourmeter	109
Removal	109
Servicing	109
Assembly	109
Battery Discharge Indicator (BDI)	109
General	109
Battery Discharge Indicator Setting (BDI)	110
Calibration	110
Functional Description	111
Platform Logic Controller, Part No. 815043	111
KYS Key Switch	114
Removal	114
Servicing	114
Assembly	114
Speed Limit Switch (LMS)	115
Removal	115
Assembly	115
Speed Limit Switch on Mast (LMS2)	115
Removal	115

TABLE OF CONTENTS



Assembly	115
Brake Switch (BRS)	116
Removal	116
Assembly	116
Override Switch (ORS)	118
Removal	118
Assembly	118
Emergency Disconnect Switch (EDS)	119
Removal	119
Servicing	119
Assembly	119
On Board Charger	120
General	120
Battery Charging Phases	120
First Phase (I1)	120
Second Phase (P)	120
Third Phase (U)	120
Fourth Phase (I2)	120
End of Normal Charging	120
Special Charging Phases	120
Compensating Charge	120
Float Charge	121
Partial Charging	121
Charging Errors	121
Green LED is not lit	121
Green LED flashing	121
Important Technical Data	122
Replacing the Charger	123
Removal / Assembly	123
On Board Charger	124
General	124
Battery Charging Phases	124
First Phase (I1)	124
Second Phase (P)	124
Third Phase (U)	125
Fourth Phase (I2)	125
End of normal charging	125
Special Charging Phases	125
Compensating Charge	125
Float charge	125
Partial charging	125
Charging Errors	127
Green LED not lit	127
Green LED flashing	127
Important Technical Data	128
Replacing the Charger	128
Removal / Assembly	128
Motors	129
General Maintenance Instructions	129
Important Maintenance Instructions	129
Traction Motor	130
Servicing	130
Removal	130
Repairs	131

Assembly	132
Pump Motor	133
Removal	133
Assembly	133
Maintenance	134
Accessing brushes	134
Armature (WE/WS 1.25 and 1.3)	134
Armature (WE/WS 1.4, 1.6 and 1.8)	134
Bearings	134
Pump Motor	135
Removal	135
Assembly	135
Maintenance	135
Accessing brushes	135
Brushes (WE/WS 1.25, 1.3)	135
Brushes (WE/WS 1.4, 1.6, 1.8)	135
Armatures (WE/WS 1.25, 1.3)	135
Armature (WE/WS 1.4, 1.6, 1.8)	136
Electrical Panel	137
General	138
Removal	138
Assembly	138
Electrical Panel	139
General	140
Removal	140
Assembly	140
Contactors	141
Inspection	141
Contacts	141
Coils	141
Springs	141
Checking the coils	141
Servicing	142
Travel contactor, part no. 802815	142
Travel contactor, part no. 804226	144
Contactor Removal / Assembly	146
Travel Contactor	146
Removal	146
Assembly	146
Lift Contactor	146
Removal	146
Assembly	146
Battery	147
Removal & Installation	147
Removal with a lifting device	147
Assembly	147
Removal using the optional battery rollers:	147
Servicing the Battery	147
General	147
Battery Connector	147
Removal	147
Servicing	147
Hydraulic Control Module (HCM)	149

TABLE OF CONTENTS



BRAKE SYSTEM	PAGE	SERIAL NO. CUT	REV.
Brake Operation	153		
Repairing the Brake	154		
Removal	154		
Dismantling	154		
Assembly	155		
Assembly	155		
Brake Air Gap Adjustment	156		
Setting the Braking Distance	157		
Default setting	157		
Testing and Adjusting the Braking Distance	158		
Calculating the braking distance	158		
STEERING	PAGE	SERIAL NO. CUT	REV.
Control Handle Return Springs	161		
Spring Tension Adjustment	161		
Spring Removal	161		
Assembly	162		
Cardan Joint	163		
Removal	163		
Assembly	163		
Steering Chain	164		
Removal	164		
Assembly	164		
Tensioning the steering chain	164		
Forward Travel	165		
Test and Adjustment	165		
Up to serial no. 5A134880:	165		
From serial no. 5A134882:	165		
Tiller Handle Components	166		
Main Components	166		
Tools required	167		
Hand Grip Shells	167		
Removal	167		
Assembly	168		
Switch Unit	169		
Removal	169		
Assembly	169		
“Rabbit/Turtle” Toggle Switch	170		
Removal	170		
Assembly	170		
Hydraulic PC Board	170		
Removal	170		
Assembly	170		
Main PC Board	171		
Removal	171		
Assembly	171		
Potentiometer	172		
Removal	172		
Assembly	173		
Safety Reverse Switch	174		
Removal	174		
Assembly	175		

Horn Switch	175
Removal	175
Assembly	175
Hand grip	176
Removal	176
Assembly	177
Auxiliary Hydraulics Switch	177
Removal	177
Assembly	177

LIFTING MECHANISM	PAGE	SERIAL NO. CUT	REV.
Mast	181		
General	181		
Lifting Gear Minimum Capacity	181		
Removal	181		
Assembly	181		
Fork Carriage	182		
Removal	182		
Assembly	182		
Adjusting the fork carriage clearance	182		
Mast Maintenance	184		
Greasing the Roller Tracks	184		
Mast rollers	184		
Removal	184		
Assembly	184		
Lift Chains	185		
Inspection	185		
Cleaning Methods	185		
Wear	185		
Freedom of Movement of Chain Links	187		
Chain Tension	187		
Chain Anchor and Pulleys	187		
Worn Connection Plates	187		
Protruding or Turned Chain Pins	188		
Corrosion	188		
Chain Lateral Wear	188		
Uneven Chain Tension	188		
Misaligned Lift Components	188		
Lift Chain Lubrication	189		
Separating Lift Chains	190		
Tools and Equipment Required	190		
Separation	190		
Forks	191		
General	191		
Terms	191		
Fork identification	191		
Repairs	191		
Checking the Forks	192		
Crack Inspection	192		
Heel area	192		
Welding seams	192		
Verticality Test	193		
Fork Blade Warping	193		
Measuring the Fork Tip Width	193		

TABLE OF CONTENTS



Fork Tine Height Difference	194		
Fork Stop	194		
Fork Blade Wear	194		
CYLINDERS	PAGE	SERIAL NO. CUT	REV.
Seal Assembly	197		
General	197		
Safety When Working on Hydraulic Systems	197		
General Instructions for Repairing Hydraulic Components	197		
Rod Seal Assembly	197		
General	197		
Large Rod Seal Assembly	198		
Small Seal Rod Assembly	198		
Rod Seal Assembly, Sealing Lip First	199		
Cylinder Removal and Assembly	200		
TL Mast Lift Cylinder	200		
Seal Replacement	200		
Installing TL Mast Lift Cylinders	201		
TF Mast Lift Cylinders	202		
Removing the TF Mast Lift Cylinders	202		
Seal replacement	202		
Installing TF Mast Lift Cylinders	203		
TF Free Lift Cylinder	204		
Seal replacement	204		
Installing Carriage Cylinder	205		
Cylinder Bleeding and Flushing	205		
Bleeding - Mast Lift Cylinders	205		
Bleeding - Free Lift Cylinder (if applicable)	205		
Flushing – Mast Lift Cylinders and Free Lift Cylinders (if applicable)	205		
Drift Test	206		
Cylinder Shimming	206		
Lift Cylinder Shims	206		
Free Lift Cylinder Shims	206		
HYDRAULIC CYLINDERS	207		
Simplex mast cylinder	207		
Lift Cylinder	207		
PLATFORM	PAGE	SERIAL NO. CUT	REV.
Folding Platform	211		
Mechanical Adjustment	211		
Adjusting the Platform Switch (PLS)	212		
Platform Cushioning	213		
Layering the disk springs	213		
Side restraint	213		
Mechanical Adjustment	213		
SCHEMATIC DIAGRAMS	PAGE	SERIAL NO. CUT	REV.
Schematic Diagram, Standard	217		
Distribution Panel, Standard	219		
Traction Controller - Power Side, Standard	220		
Brake Circuit, Standard	221		

Instrument & Proportional Electronic Circuit, Standard . . .	222
Control Handle Circuit, Standard	223
Schematic Diagram, Options	224
Distribution Panel, Options	226
Traction Controller - Power Side, Options	227
Brake Circuit, Options	228
Instrument & Proportional Electronic Circuit, Options . . .	229
Control Handle Circuit, Options	230
Schematic Diagram, Auxiliary Hydraulics	231
Distribution Panel, Auxiliary Hydraulics	233
Traction Controller, Auxiliary Hydraulics	234
Brake Circuit, Auxiliary Hydraulics	235
Instrument & Prop. Electronics & Sideshift Circuit	236
Control Handle Circuit, Auxiliary Hydraulics	237
Control Handle Wire Harness	238
Horn Harness	239
Main Harness, Standard	240
Main Harness, Auxiliary Hydraulics	241
Hourmeter Harness	243
Harness, Brake	244
Harness, Control Module	245
Proportional Hydraulics Connector Lead, Standard	246
ORS Jumper	251
Power Cables	252
Schematic Diagram, Standard	253
Distribution Panel, Standard	254
Traction Controller - Power Side, Standard	255
Brake Circuit, Standard	256
Walkie / Rider Circuit, Standard	257
Instrument & Proportional Electronic Circuit, Standard . .	258
Control Handle Circuit, Standard	259
Schematic Diagram, Option	260
Distribution Panel, Option	262
Traction Controller - Power Side, Option	263
Brake Circuit, Option	264
Walkie / Rider Circuit, Option	265
Instrument & Proportional Electronic Circuit, Option . . .	266
Control Handle Circuit, Option	267
Schematic Diagram, Auxiliary Hydraulics	268
Distribution Panel, Auxiliary Hydraulics	270
Traction Controller, Power Side, Auxiliary Hydraulics . . .	271
Brake Circuit, Auxiliary Hydraulics	272
Walkie / Rider Circuit, Auxiliary Hydraulics	273
Instrument & Prop. Electronics & Sideshift Circuit, Auxiliary Hydraulics	274
Control Handle Circuit, Auxiliary Hydraulics	275
Control Handle Harness	276
Horn Harness	277
Main Harness, Standard	278
Main Harness, Auxiliary Hydraulics	279
Hourmeter Harness	281
Harness, Brake	282
Harness, Control Module	283
Proportional Hydraulics Connector Lead, Standard	284

TABLE OF CONTENTS

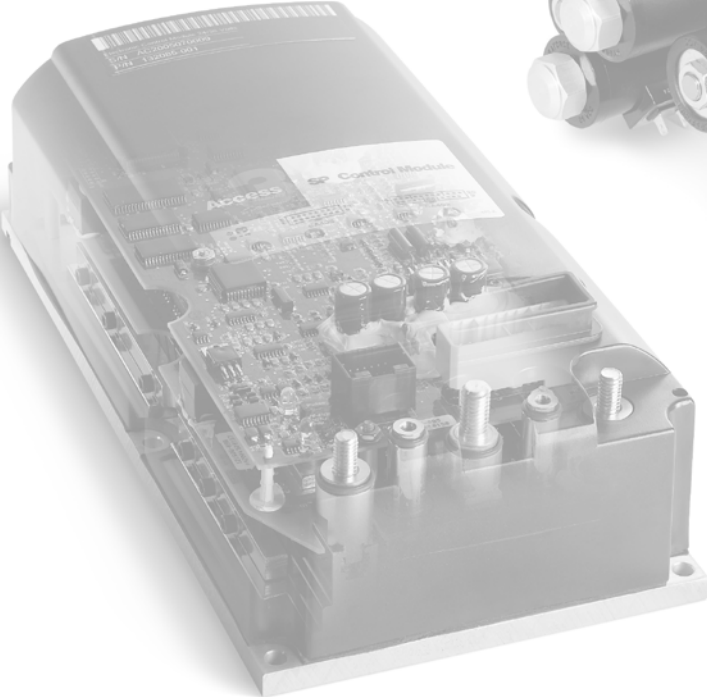
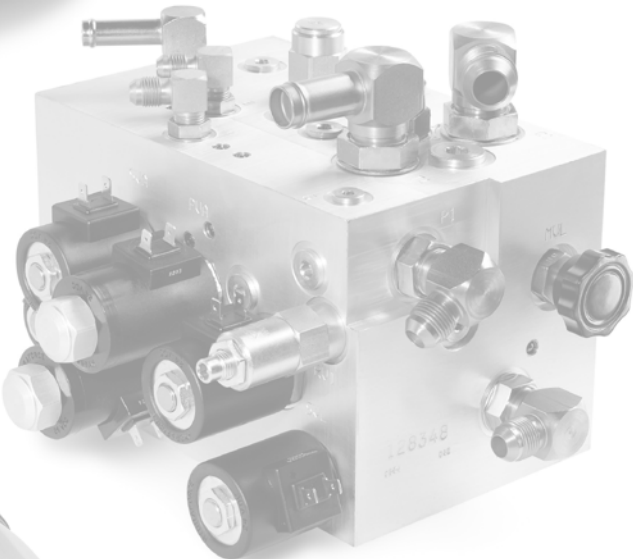


ORS Jumper	289
Harness 1, Platform	290
Harness 2, Platform	291
Power Cables	292
Schematic Diagram, Standard	293
Distribution Panel, Standard	295
Traction Controller - Power Side, Standard	296
Brake Circuit, Standard	297
Walkie / Rider, Standard	298
Instrument & Platform Logic, Standard	299
Control Handle Circuit, Standard	300
Schematic Diagram, Standard	301
Traction Controller, Option	304
Brake Circuit, Option	305
Walkie / Rider Circuit, Option	306
Instrument & Platform Logic, Option	307
Control Handle Circuit, Option	308
Schematic Diagram, Auxiliary Hydraulics	310
Distribution Panel, Auxiliary Hydraulics	312
Traction Controller - Power Side, Auxiliary Hydraulics ..	313
Brake Circuit, Auxiliary Hydraulics	314
Walkie / Rider Circuit & Instrument, Auxiliary Hydraulics ..	315
Instrument & Prop. Electronics & Sideshift Circuit, Auxiliary Hydraulics	316
Control Handle Circuit, Auxiliary Hydraulics	317
Platform Logic, Auxiliary Hydraulics	319
Control Handle Wire Harness	320
Horn Harness	321
Main Harness	322
Main Harness, Auxiliary Hydraulics	324
Hourmeter Harness	326
Harness, ORS - BRS - BRK	327
Harness, TCM	328
Proportional Hydraulics Connector Lead, Standard	329
ORS Jumper	334
Harness, Platform Logic	335
Platform Cable 1	337
Platform Cable 2	338
Cable, LMS2	339
Schematic Diagram, Standard	340
Distribution Panel, Standard	342
Traction Controller - Power Side, Standard	343
Brake Circuit, Standard	344
Instrument & Proportional Electronic Circuit, Standard ..	345
Control Handle Circuit, Standard	346
Option Connection, Thermal Switch, Standard	348
Schematic Diagram, Options	349
Distribution Panel, Options	351
Traction Controller - Power Side, Options	352
Brake Circuit, Options	353
Instrument & Proportional Electronic Circuit, Options ..	354
Control Handle Circuit, Options	355
Option Connection, Thermal Switch, Options	357
Control Handle Wire Harness	358

Horn Harness	359
Main Harness	360
Hourmeter Harness	362
Strobe & Alarm Signal Optional Harness	363
Strobe & Alarm Signal Optional Harness	364
Mast Cable for Strobe Light	366
Jumper 1.25 t	366
Power Cables	368
Schematic Diagram, Standard	369
Electric Diagram, Standard	371
Traction Controller, Power Side, Standard	372
Brake Circuit, Standard	373
Instrument & Proportional Electronic Circuit, Standard ..	374
Control Handle Circuit, Standard	375
PLM - Platform Logic Module, Walkie /Rider Circuit ...	376
Option Connection, Thermal Switch, Standard	378
Schematic Diagram, Standard	379
Distribution Panel, Options	381
Traction Controller - Power Side, Options	382
Brake Circuit, Options	383
Instrument & Proportional Electronic Circuit, Options ...	384
Control Handle Circuit, Options	385
PLM - Platform Logic Module, Walkie / Rider Circuit, Options	387
Option Connection, Thermal Switch, Options	389
Control Handle Wire Harness	390
Horn Harness	391
Main Harness	392
Hourmeter Harness	394
Strobe & Alarm Signal Optional Harness	395
Strobe & Alarm Signal Optional Harness	396
Mast Cable for Strobe Light	398
Jumper 1.25 t	398
ORS Jumper	400
Platform Cable 2	401
Cable, LMS2	402
Power Cables	403

HYDRAULIC SCHEMATIC	PAGE	SERIAL NO. CUT	REV.
Hydraulic Diagrams	407		
WE/WS TL	407		
WE/WS TF	408		
WE/WS TT	408		
WS Auxiliary Hydraulics TL Mast	409		
WS Auxiliary Hydraulics TT Mast	410		
WE/WS	411		
TL Mast	411		
Abbreviations	411		
TT mast	412		
Abbreviations	412		
TF mast	413		
Abbreviations	413		

Notes:



SAFETY

Notes:

Symbols Used

Safety Symbols

To provide guidance and to identify potential hazards in a clear manner, we have used graphic illustrations in the manual:



This symbol indicates danger to life. You or other people could be seriously or fatally injured if you fail to comply with this safety instruction.



This symbol represents risk of injury and/or potentially significant material damage. You or other people could be seriously injured and/or significant material damage could occur if you fail to comply with this safety instruction.



This symbol represents potential minor injuries and/or potential minor material damage. You or other people could be slightly injured and/or minor material damage could occur if you fail to comply with this safety instruction.

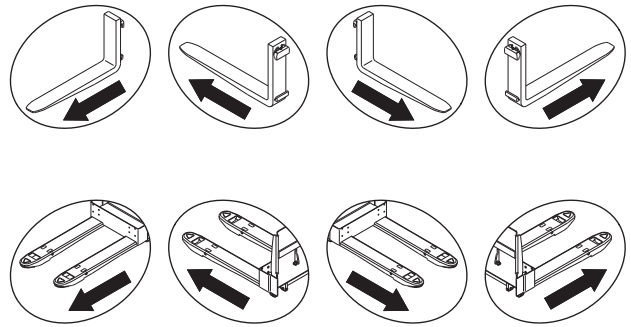
NOTE

This symbol is used with additional information and instructions.

General Symbols

Fork direction

These symbols are used to show the direction of view in an illustration. The direction of the forks is taken as reference:



General Safety Instructions

Maintenance and Repair Instructions



DANGER

Observe the safety instructions in the maintenance manual and the truck operator manual. Failure to do so could result in serious or even fatal injuries to maintenance and other personnel.

Powered trucks can become hazardous if maintenance and service work are neglected. For this reason maintenance and inspections must be performed at sufficiently short intervals. There must be suitably trained personnel and proper guidelines at your place of work.

Maintenance and Repairs

- Always carry out work in accordance with the test and maintenance schedule contained in this manual and any applicable service bulletins.
- Maintenance and repair work must only be performed by qualified and authorized personnel.
- Keep fire protection equipment at hand and do not use a naked flame to check fluid levels or to test for leaks.
- Use groundwater neutral, non-flammable solvents for cleaning. Always perform cleaning work over an oil separator. Protect the electrical system against damp.
- Keep the work place and battery charging station clean, dry and well ventilated.
- Do not allow oils to penetrate the ground or the drainage system. Used oil must be recycled correctly. Oil filters and dehumidifying inserts must be treated as special waste. Observe the local authority regulations.
- Spilled battery fluid must be neutralized immediately and thoroughly rinsed.
- Keep the truck clean. This will facilitate tracing loose or faulty components.
- Maintain the legibility of the data capacity plate and data plate, warning and instruction decals.

- Truck modifications and additions may only be performed with Crown's prior written approval.
- The reliability, safety and suitability of Crown trucks can only be ensured by using original Crown parts.

Before Parking the Truck

- Apply the brake until the truck comes to rest.
- Lower the fork carriage fully.
- Apply the parking brake if applicable.
- Switch off the truck and remove the key.
- When parking on a slope or incline always chock all wheels.

Before Working on the Truck

- Jack up the truck so that the drive wheel is clear of the ground. Apply the Emergency Disconnect and disconnect the battery.
- Prevent the truck from rolling away and lowering.
- When working on the mast, fork carriage or lifting mast always apply a chock to prevent accidental lowering.
- Allow sufficient room for manoeuvre when testing the truck, to avoid endangering yourself and other people.

Before Starting the Truck

- Test the safety mechanisms.
- Get into the travel position.
- Test the lifting mechanism, travel switch, speed control, steering, warning mechanism and brakes.

Warning and Instruction Decals on the Truck

In the course of periodic maintenance work, check that the warning and instruction decals on the truck are complete and legible.

- Clean any dirty decals.

- Replace any faulty or missing decals.

A description of the warning and instruction decals used on the truck and their locations are given in chapter 10.9 of the parts manual.

BUY NOW

**Then Instant Download
the Complete Manual
Thank you very much!**