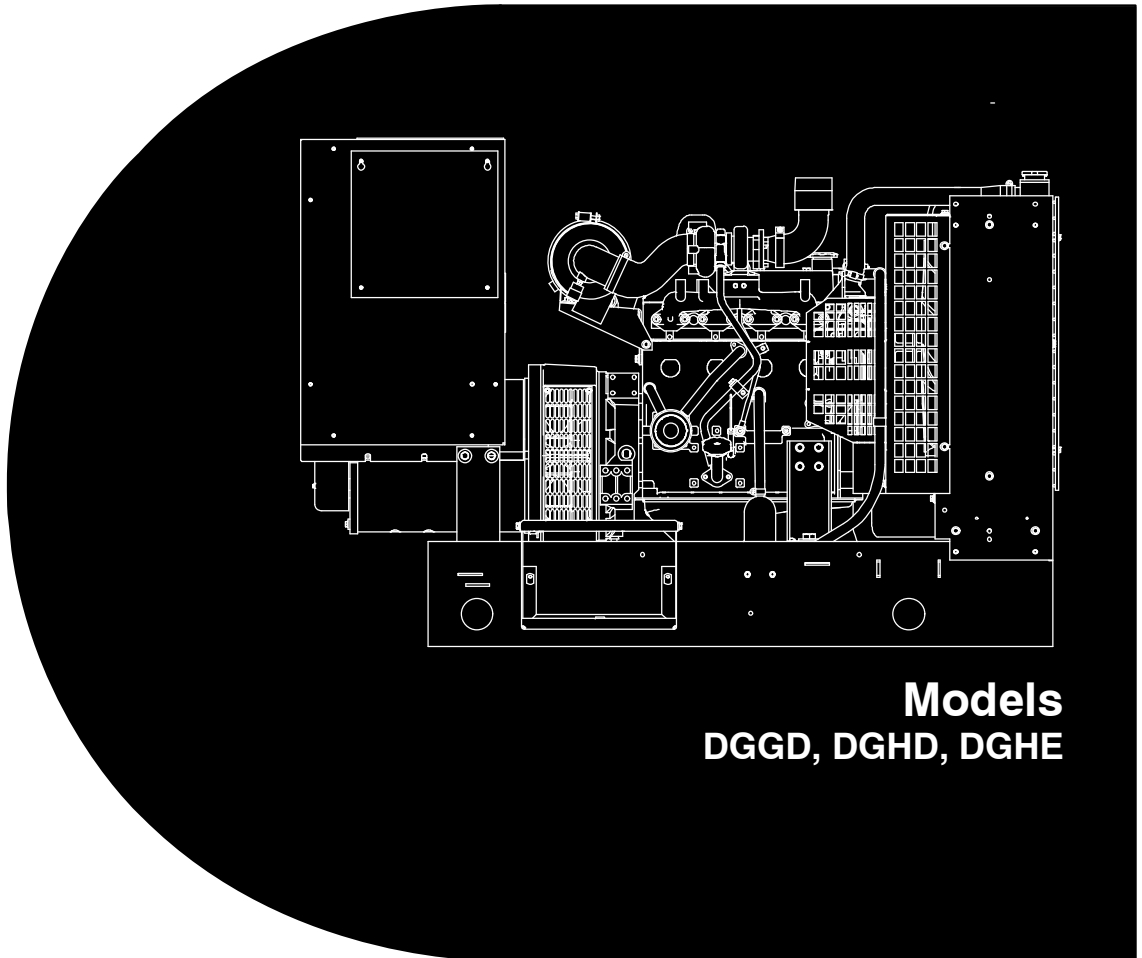


Service Manual

Detector™ Control Generator Sets



Models
DGGD, DGHD, DGHE

Table of Contents

SECTION	TITLE	PAGE
	IMPORTANT SAFETY INSTRUCTIONS	iii
1	INTRODUCTION	
	About This Manual	1-1
	Test Equipment	1-1
	How To Obtain Service	1-1
2	AC CONTROL	
	General	2-1
	AC Control Panel Components	2-1
	Automatic Voltage Regulator (AVR) Adjustments	2-3
	Principle Of Generator Operation	2-8
3	ENGINE CONTROL	
	General	3-1
	Standard Control Panel Components	3-1
	Control Box Interior	3-3
	Engine Control Monitor (A11)	3-3
	Engine Sensors	3-6
	Auxiliary Control Components	3-8
	Sequence Of Operation	3-13
4	TROUBLESHOOTING	
	The Engine Does Not Crank In Run Mode	4-1
	The Engine Does Not Crank In Remote Mode	4-4
	The Engine Cranks But Does Not Start	4-5
	The Engine Runs Until Fault Shutdown	4-6
	The Engine Lacks Power Or Is Unstable	4-8
	An Amber Warning Lamp Is On	4-10
	The Green Run Lamp Stays Off But The Set Runs Normally	4-11
	No Output Voltage	4-12
	Output Voltage Is Too High Or Too Low	4-15
	Output Voltage Is Unstable	4-16
	The Field Circuit Breaker Keeps Tripping	4-17
	The Phase Currents Are Unbalanced	4-18

SECTION	TITLE	PAGE
5	SERVICING THE GENERATOR	
	Testing The Generator	5-1
	Removing And Disassembling The Generator	5-9
	Reassembling The Generator	5-11
	Servicing The PMG	5-11
6	GOVERNORS	
	Electric Governor	6-1
	Electric Governor Throttle Lever/Linkage Adjustment	6-3
	Magnetic Speed Pickup Unit Installation	6-4
7	FUEL TRANSFER PUMP AND CONTROL	
	General	7-1
	Operation	7-2
	Wiring Connections	7-4
	Fuel Transfer Pump Motor Connections	7-5
	Testing The Float Switch Assembly	7-6
8	WIRING DIAGRAMS	8-1

BUY NOW

**Then Instant Download
the Complete Manual
Thank you very much!**