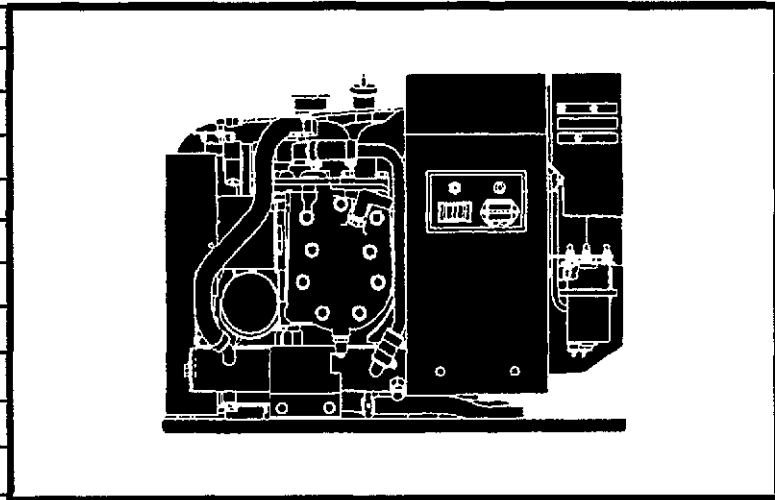
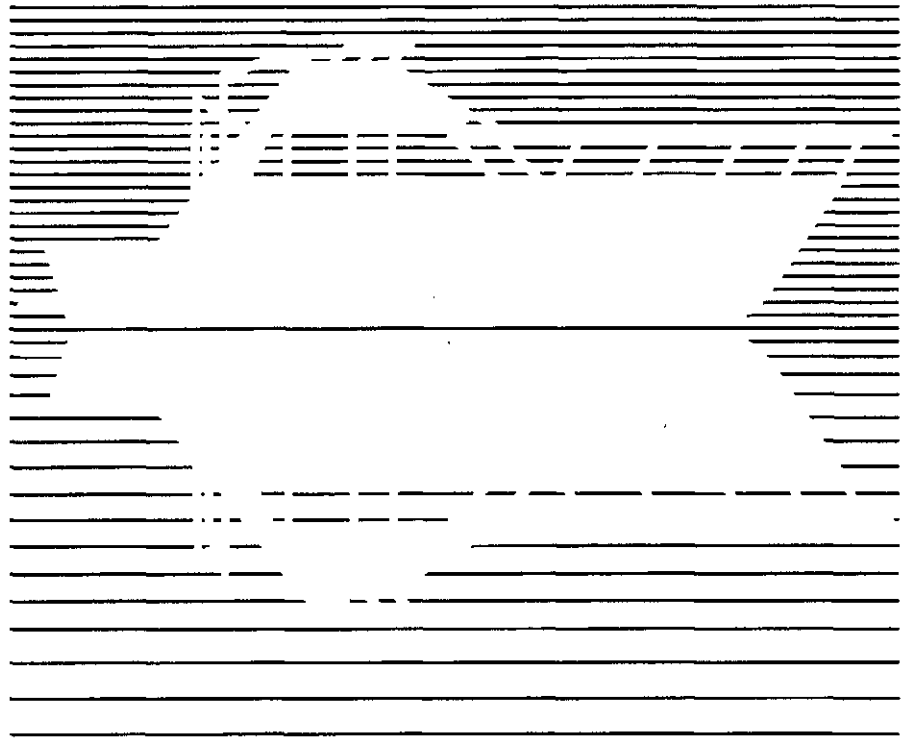


OAR

MARINE

Service Manual

MCE



Safety Precautions

Before operating the generator set, read the Operator's Manual and become familiar with it and your unit. **Safe and efficient operation can be achieved only if the unit is properly operated and maintained.** Many accidents are caused by failure to follow fundamental rules and precautions.

Throughout this manual you will notice symbols which alert you to potentially dangerous conditions to the operator, service personnel, or the equipment itself.

▲ DANGER *This symbol warns of immediate hazards which will result in severe personal injury or death.*

▲ WARNING *This symbol refers to a hazard or unsafe practice which can result in severe personal injury or death.*

▲ CAUTION *This symbol refers to a hazard or unsafe practice which can result in personal injury or product or property damage.*

FUEL, ENGINE OIL, AND FUMES ARE FLAMMABLE AND TOXIC. Fire, explosion, and personal injury can result from improper practices.

- Benzene and lead, found in some gasoline, have been identified by some state and federal agencies as causing cancer or reproductive toxicity. When checking, draining or adding gasoline, take care not to ingest, breathe the fumes, or contact gasoline.
- Used engine oils have been identified by some state or federal agencies as causing cancer or reproductive toxicity. When checking or changing engine oil, take care not to ingest, breathe the fumes, or contact used oil.
- Do not fill fuel tanks with the engine running. Do not smoke around the generator set area. Wipe up any oil or gas spills. Do not leave oily rags in engine compartment or on the generator set. Keep this and surrounding area clean.
- Inspect fuel system before each operation and periodically while running.
- Equip the engine fuel supply with a positive fuel shutoff.
- Always disconnect the battery ground (-) lead first and reconnect it last. Make sure you connect the battery correctly. A direct short across the battery terminals can cause an explosion. Do not smoke while servicing batteries. Hydrogen gas given off during charging is very explosive.
- Keep a fire extinguisher available in or near the engine compartment and in other areas throughout the vessel. Use the correct extinguisher for the area. For most types of fires, an extinguisher rated ABC by the NFPA is available and suitable for use on all types of fires except alcohol.

EXHAUST GASES ARE DEADLY

- Provide adequate ventilation. Equip the bilge with a power exhauster.
- Be sure propulsion and generator set engine exhaust systems are free of leaks. Perform thorough, periodic inspections of the exhaust system and repair leaks immediately. Exhaust gases are deadly.
- Never sleep in the vessel with the generator set running unless the vessel is equipped with an operating carbon monoxide detector.

HOT COOLANT CAN CAUSE SEVERE PERSONAL INJURY

- Hot coolant is under pressure. Do not loosen the coolant pressure cap while the engine is hot. Let the engine cool before opening the pressure cap.

MOVING PARTS CAN CAUSE SEVERE PERSONAL INJURY OR DEATH.

- Do not remove any belt guards or covers with the unit running.
- Keep hands and loose clothing away from moving parts. Do not wear jewelry while servicing any part of the generator set.
- Never step on the generator set (as when entering or leaving the engine compartment). It can stress and break unit components, possible resulting in dangerous operating conditions. . . from leaking fuel, leaking exhaust fumes, etc.
- Before performing any maintenance on the generator set, disconnect its batteries to prevent accidental starting. Do not disconnect or connect battery cables if fuel vapors are present. Ventilate the generator set compartment or bilge thoroughly with the power exhauster.

ELECTRICAL SHOCK WILL CAUSE SEVERE PERSONAL INJURY OR DEATH

- Do not make adjustments in the control panel or on engine with unit running. High voltages are present. Work that must be done while unit is running should be done only by qualified service personnel standing on dry surfaces to reduce shock hazard.
- DO NOT CONNECT THE GENERATOR SET TO THE PUBLIC UTILITY OR TO ANY OTHER ELECTRICAL POWER SYSTEM. Electrocutation or damage to property can occur at a site remote from the boat where line or equipment repairs are being made if the set is connected to that power system. An approved transfer switch must be used if more than one power source is to be made available to service the boat.
- Do not work on this equipment when mentally or physically fatigued, or after consuming any alcohol or drug that makes the operation of equipment unsafe.

Table of Contents

SECTION	TITLE	PAGE
	SAFETY PRECAUTIONS	Inside Front Cover
1	INTRODUCTION	1-1
2	SPECIFICATIONS	2-1
3	DIMENSIONS AND CLEARANCES	3-1
4	TORQUE SPECIFICATIONS	4-1
5	PREPARING TO SERVICE	5-1
	Troubleshooting	5-1
	Special Tools	5-1
	Safety Considerations	5-1
	Removing the Set from the Boat	5-2
6	ENGINE - PRIMARY SYSTEMS	6-1
	General	6-1
	Exterior Panel Removal	6-1
	Exhaust System	6-2
	Cooling System	6-3
	Ignition System	6-7
	Crankcase Ventilation System	6-9
	Lubrication System	6-10
	Fuel System	6-10
	Electric Starter	6-17
	Troubleshooting Engine Primary Systems	6-19
7	CONTROL SYSTEM	7-1
	General	7-1
	Components	7-1
	Sequence of Operation	7-2
	Control Troubleshooting	7-4
8	GENERATOR	8-1
	Principal of Operation	8-2
	Generator Service	8-3
	Generator Troubleshooting	8-9
9	ENGINE - BLOCK ASSEMBLY	9-1
	General	9-1
	Cylinder Heads	9-1
	Valve System	9-1
	Piston/Rod Assemblies	9-6
	Flywheel	9-10
	Gear Cover	9-10
	Governor Cup	9-11
	Timing Gears and Camshaft	9-11
	Lubrication System	9-12
	Cylinder Block	9-13
	Bearings	9-15
	Oil Seals	9-16
	Crankshaft	9-16
10	SERVICE CHECKLIST	10-1

BUY NOW

**Then Instant Download
the Complete Manual
Thank you very much!**