



Service Manual

Our energy working for you.™



**Power
Generation**

Transfer Switch

40–1000 Amps

OTECA (Spec A)

OTECB (Spec A)

OTECC (Spec A)

OTECD (Spec A)

Table of Contents

SECTION	TITLE	PAGE
	SAFETY PRECAUTIONS	v
1	INTRODUCTION	1-1
	About This Manual	1-1
	Transfer Switch Application	1-1
	Transfer Switch Function	1-1
	Model Identification	1-2
	How to Obtain Service	1-2
2	DESCRIPTION	2-1
	Cabinet	2-1
	Control Panel	2-6
	Control Function LEDs	2-6
	ATS Status LEDs	2-6
	Membrane Pushbuttons	2-6
	Electronic Control System	2-7
	Transfer Inhibit Input	2-7
	Retransfer Inhibit Input	2-7
	Remote Test Input	2-8
	Remote Override Input	2-8
	Two-Wire Starting	2-8
	Control Options	2-9
	Float Battery Charger Option	2-9
	Auxiliary Relays and Elevator Signal Relay Options	2-9
	External Exercise Clock Option	2-10
	Removing and Replacing Components	2-11
	Transfer Switch Assembly	2-11
	Contact Assemblies	2-11
	Linear Actuator	2-11
	Auxiliary Contacts	2-11

⚠WARNING

INCORRECT SERVICE OR REPLACEMENT OF PARTS CAN RESULT IN DEATH, SEVERE PERSONAL INJURY, AND/OR EQUIPMENT DAMAGE. SERVICE PERSONNEL MUST BE QUALIFIED TO PERFORM ELECTRICAL AND/OR MECHANICAL SERVICE.

Table of Contents (Continued)

SECTION	TITLE	PAGE
3	OPERATION	3-1
	Time Delays	3-1
	Time Delay Engine Start (TDES)	3-1
	Time Delay Engine Cooldown (TDEC)	3-1
	Time Delay Normal to Emergency (TDNE)	3-1
	Time Delay Emergency to Normal (TDEN)	3-1
	Time Delay Programmed Transition (TDPT)	3-2
	Time Delay Elevator (TDEL) Pre-Transfer	3-2
	Elevator Post Transfer Delay	3-2
	Sensors	3-3
	Utility Sensor	3-3
	Generator Sensor	3-3
	Phase Check Sensor	3-3
	Return to Programmed Transition	3-3
	Automatic Operation	3-3
	Manual Operation	3-4
	Pushbutton Operation	3-5
	Test Pushbutton	3-5
	Override Pushbutton	3-5
	Set Exercise Pushbutton	3-5
	Test With or Without Load	3-6
	Test With Load Sequence of Events	3-6
	Test Without Load Sequence of Events	3-7
	Generator Set Exerciser	3-8
	Exercise With or Without Load	3-8
	Integrated Exerciser	3-8
	Optional External Exerciser	3-10
	Using the Menu Button	3-11
	Using the +/- Buttons	3-11
	Using the ok Button	3-11
	Setting the Clock with Summer/Winter Time (Daylight Savings Time)	3-11
	Setting Exercise Start and Stop Times	3-14
	Checking the Programs	3-17
	Erasing (Clearing) A Programmed Exercise Period	3-20
	Erasing (Clearing) All Programmed Exercise Periods	3-21
	Initiating or Overriding an Exercise Program	3-22
	Selecting Permanent On/Off Mode	3-23
	Adding A Security Code	3-24
	After Programming the Exerciser Clock	3-25
	Resetting the Timer	3-25
4	CONTROL PANEL CONFIGURATION	4-1
	Accessing the Front Panel Configuration Editor	4-1
	Modifying the Configuration	4-4

Table of Contents (Continued)

SECTION	TITLE	PAGE
5	TROUBLESHOOTING	5-1
	About Customer Inputs	5-1
	Control Panel LED Indicators	5-1
	Sequence of Events	5-4
	Normal to Emergency Sequence of Events	5-4
	Emergency to Normal Sequence of Events	5-7
	Troubleshooting With Symptoms	5-11
	Transfer Switch Operation	5-11
	Troubleshooting Warnings	5-11
	Utility Power Failure	5-12
	Utility Power Is Restored	5-15
	Miscellaneous Troubleshooting Issues	5-18
6	TRANSFER SWITCH SERVICE	6-1
	Switch Assembly Removal/Replacement Procedure	6-1
	Disconnect AC Power	6-1
	Reconnecting AC Power (When Finished)	6-1
	Linear Actuator Removal and Replacement (40 to 125 Amperes)	6-2
	Removing Actuator	6-2
	Replacing Actuator	6-2
	Block and Cross-Bar Assembly Removal and Replacement (40 to 125 Amperes, Three Pole Transfer Switches Only)	6-4
	Removing the Block and Cross-Bar Assembly (Normal or Emergency)	6-4
	Replacing the Block and Cross-Bar Assembly	6-5
	Auxiliary Switch Removal and Replacement (40 to 125 Amperes, Three Pole Transfer Switches Only)	6-8
	Removing Auxiliary Switch Assembly	6-8
	Replacing Auxiliary Switch Assembly	6-8
	Linear Actuator Removal and Replacement (150 to 260 Amperes Transfer Switches and 40 to 125 Amperes, Four Pole Transfer Switches)	6-10
	Removing Actuator	6-10
	Replacing Actuator	6-10
	Block and Cross-Bar Assembly Removal and Replacement (150 to 260 Amperes Transfer Switches and 40 to 125 Amperes, Four Pole Transfer Switches)	6-13
	Removing the Block and Cross-Bar Assembly (Normal or Emergency)	6-13
	Replacing Block and Cross-Bar Assembly	6-16
	Auxiliary Switch Removal and Replacement (150 to 260 Amperes Transfer Switches and 40 to 125 Amperes, Four Pole Transfer Switches)	6-17
	Removing Auxiliary Switch Assembly	6-17
	Replacing Auxiliary Switch Assembly	6-17
	Linear Actuator Removal and Replacement (300 to 600 Amperes)	6-19
	Removing Actuator	6-19
	Replacing Actuator	6-19

Table of Contents (Continued)

SECTION	TITLE	PAGE
	Block and Cross-Bar Assembly Removal and Replacement (300 to 600 Amperes)	6-22
	Removing the Block and Cross-bar Assembly (Normal or Emergency)	6-22
	Replacing the Block and Cross-bar Assembly (Normal or Emergency)	6-25
	Auxiliary Switch Removal and Replacement (300 to 600 Amperes)	6-26
	Removing Auxiliary Switch Assembly	6-26
	Replacing Auxiliary Switch Assembly	6-27
	Linear Actuator Removal and Replacement (800 and 1000 Amperes)	6-28
	Removing Actuator	6-28
	Replacing Actuator	6-28
	Block and Cross-Bar Assembly Removal and Replacement (800 and 1000 Amperes)	6-31
	Removing the Block and Cross-bar Assembly (Normal or Emergency)	6-31
	Replacing the Block and Cross-bar Assembly (Normal or Emergency)	6-35
	Auxiliary Switch Removal and Replacement (800 and 1000 Amperes)	6-36
	Removing Auxiliary Switch Assembly	6-36
	Replacing Auxiliary Switch Assembly	6-37
7	SCHEMATICS	7-1

Safety Precautions

This manual includes the following symbols to indicate potentially dangerous conditions. Read the manual carefully and know when these conditions exist. Then take the necessary steps to protect personnel and the equipment.

⚠ DANGER *This symbol warns of immediate hazards that will result in severe personal injury or death.*

⚠ WARNING *This symbol refers to a hazard or unsafe practice that can result in severe personal injury or death.*

⚠ CAUTION *This symbol refers to a hazard or unsafe practice that can result in personal injury or product or property damage.*

ELECTRICAL SHOCK CAN CAUSE SEVERE PERSONAL INJURY OR DEATH

High voltage in transfer switch components presents serious shock hazards that can result in severe personal injury or death. Read and follow these suggestions.

Keep the transfer switch cabinet closed and locked. Make sure only authorized personnel have the cabinet keys.

Due to the serious shock hazard from high voltages within the cabinet, all service and adjustments to the transfer switch must be performed only by an electrician or authorized service representative.

UTILITY-TO-GENSET APPLICATIONS

If the cabinet must be opened for any reason:

1. Move the operation selector switch on the generator set to Stop.
2. Disconnect the battery charger.
3. Disconnect the starting batteries of the generator set or sets (remove the ground [-] lead first).
4. Remove AC power to the automatic transfer switch. If the instructions require otherwise, use extreme caution due to the danger of shock hazard.

GENERAL PRECAUTIONS

Place rubber insulative mats on dry wood platforms over metal or concrete floors when working on any electrical equipment. Do not wear damp clothing (particularly wet shoes) or allow skin surfaces to be damp when handling any electrical equipment.

Jewelry is a good conductor of electricity and should be removed when working on the electrical equipment.

Wear safety glasses whenever servicing the transfer switch and do not smoke near the batteries.

Do not work on this equipment when mentally or physically fatigued, or after consuming alcohol or any drug that makes the operation of equipment unsafe.

⚠ WARNING

INCORRECT SERVICE OR REPLACEMENT OF PARTS CAN RESULT IN DEATH, SEVERE PERSONAL INJURY, AND/OR EQUIPMENT DAMAGE. SERVICE PERSONNEL MUST BE QUALIFIED TO PERFORM ELECTRICAL AND/OR MECHANICAL SERVICE.

1. Introduction

ABOUT THIS MANUAL

This manual contains service procedures for an OTEC automatic transfer switch (ATS). This is an open transition transfer switch that includes an automatic transfer switch (ATS) control. With an open transition switch, there is never a time when both sources are supplying power to the load.

Refer to the schematic and wiring diagram package that was shipped with the ATS for specific information about its configuration.

Use normal and necessary safety precautions before starting any service procedure. Identify all hazards by referring to the Safety Precautions and observe all warnings and cautions within the manual. Whenever you are troubleshooting, remember that the generator set, ATS, and utility power source are all interdependent.

TRANSFER SWITCH APPLICATION

Transfer switches are an essential part of a building's standby or emergency power system. The utility line (normal power), is backed up by a generator set (emergency power). The transfer switch automatically switches the electrical load from one source to the other.

The load is connected to the common of the ATS (Figure 1-1). Under normal conditions, the load is supplied with power from the utility (as illustrated). If utility power is interrupted, the load is transferred to the generator set (genset). When utility power returns, the load is retransferred to the utility. The transfer and retransfer of the load are the two most basic functions of a transfer switch.

TRANSFER SWITCH FUNCTION

Automatic transfer switches, capable of automatic operation without operator intervention, perform the basic function of transferring the load to the available power source. The controller monitors each source for allowable voltage and frequency range.

This automatic transfer switch, capable of automatic operation without operator intervention, is designed for utility-to-genset applications. In utility-to-genset applications, the transfer switch performs the following functions:

1. Senses the interruption of utility power.
2. Sends a start signal to the genset.
3. Transfers the load to the genset.
4. Senses the return of utility power.
5. Retransfers the load to the utility.
6. Sends a stop signal to the genset.

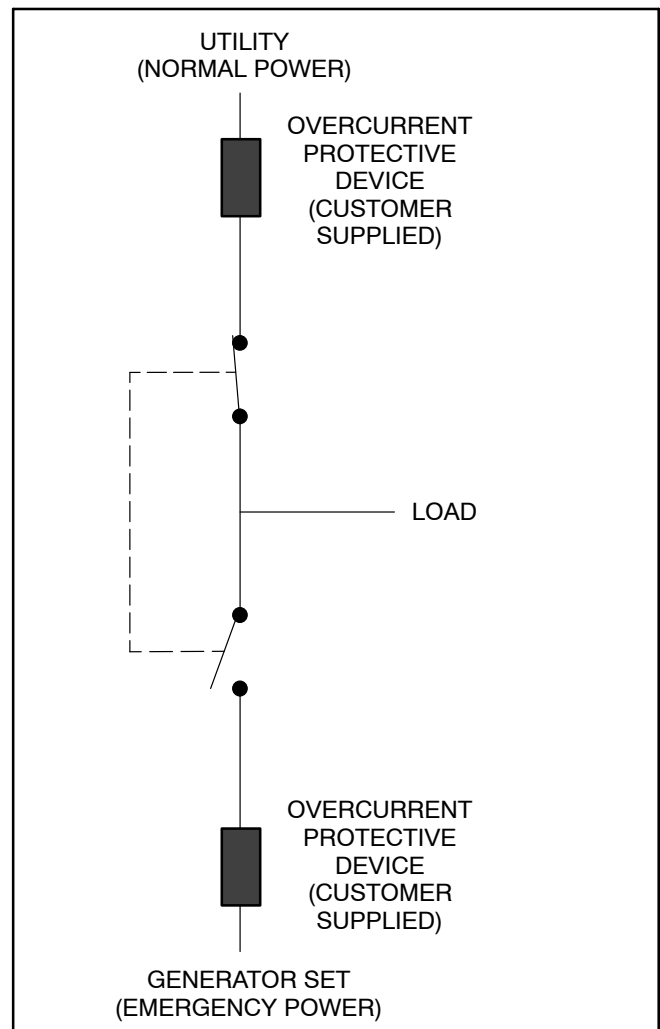


FIGURE 1-1. LOAD TRANSFER SWITCH (TYPICAL FUNCTION)

Copyright© 2004 Cummins Power Generation. All rights reserved.
Cummins, Onan, and PowerCommand are registered trademarks of Cummins Inc.
UL is a registered trademark of Underwriters Laboratories Inc.

BUY NOW

**Then Instant Download
the Complete Manual
Thank you very much!**