

# **Technical Manual**

## **ZAXIS30/35/40/50**

Vol No.: T1LSE-00

# SAFETY

## RECOGNIZE SAFETY INFORMATION

- This is the **SAFETY ALERT SYMBOL**.
  - When you see this symbol on your machine or in this manual, be alert to the potential for personal injury.
  - Follow recommended precautions and safe operating practices.



001-E01A-0001-2

SA-001

## UNDERSTAND SIGNAL WORDS

- On machine safety signs, signal words designating the degree or level of hazard - **DANGER**, **WARNING**, or **CAUTION** - are used with the safety alert symbol.
  - **DANGER** indicates an imminently hazardous situation which, if not avoided, will result in death or serious injury.
  - **WARNING** indicates a potentially hazardous situation which, if not avoided, could result in death or serious injury.
  - **CAUTION** indicates a potentially hazardous situation which, if not avoided, may result in minor or moderate injury.
  - **DANGER** or **WARNING** safety signs are located near specific hazards. General precautions are listed on **CAUTION** safety signs.
- **CAUTION** also calls attention to safety messages in this manual.
- To avoid confusing machine protection with personal safety messages, a signal word **IMPORTANT** indicates a situation which, if not avoided, could result in damage to the machine.
-  **NOTE** indicates an additional explanation for an element of information.



002-E01A-0461-6

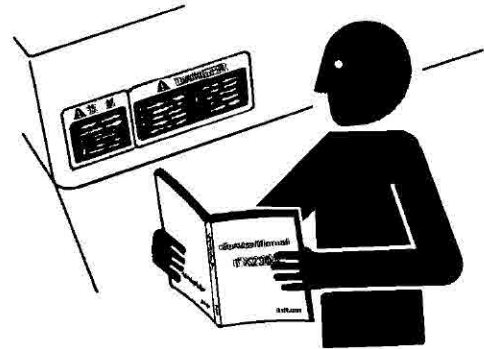
SA-1223

# SAFETY

## FOLLOW SAFETY INSTRUCTIONS

- Carefully read and follow all safety signs on the machine and all safety messages in this manual.
- Safety signs should be installed, maintained and replaced when necessary.
  - If a safety sign or this manual is damaged or missing, order a replacement from your authorized dealer in the same way you order other replacement parts (be sure to state machine model and serial number when ordering).
- Learn how to operate the machine and its controls correctly and safely.
- Allow only trained, qualified, authorized personnel to operate the machine.
- Keep your machine in proper working condition.
  - Unauthorized modifications of the machine may impair its function and/or safety and affect machine life.
- The safety messages in this SAFETY chapter are intended to illustrate basic safety procedures of machines. However it is impossible for these safety messages to cover every hazardous situation you may encounter. If you have any questions, you should first consult your supervisor before operating or performing maintenance work on the machine.

003-E01A-0003-5

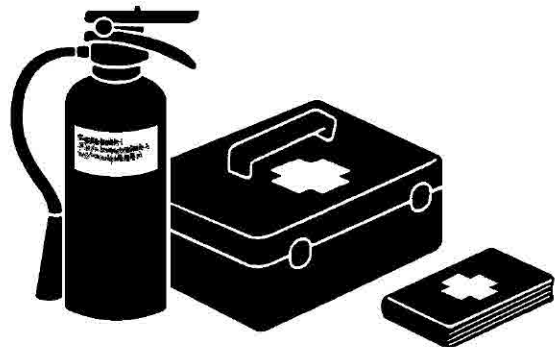


SA-003

## PREPARE FOR EMERGENCIES

- Be prepared if a fire starts or if an accident occurs.
  - Keep a first aid kit and fire extinguisher on hand.
  - Thoroughly read and understand the label attached on the fire extinguisher to use it properly.
  - Establish emergency procedure guidelines to cope with fires and accidents.
  - Keep emergency numbers for doctors, ambulance service, hospital, and fire department posted near your telephone.

004-E01A-0437-3

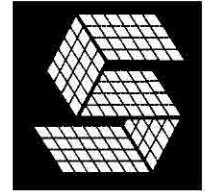


SA-437

---

---

# SECTION 1 GENERAL



## CONTENTS

### Group 1 Specification

Specifications .....	T1-1-1
Working Ranges .....	T1-1-3

### Group 2 Component Layout

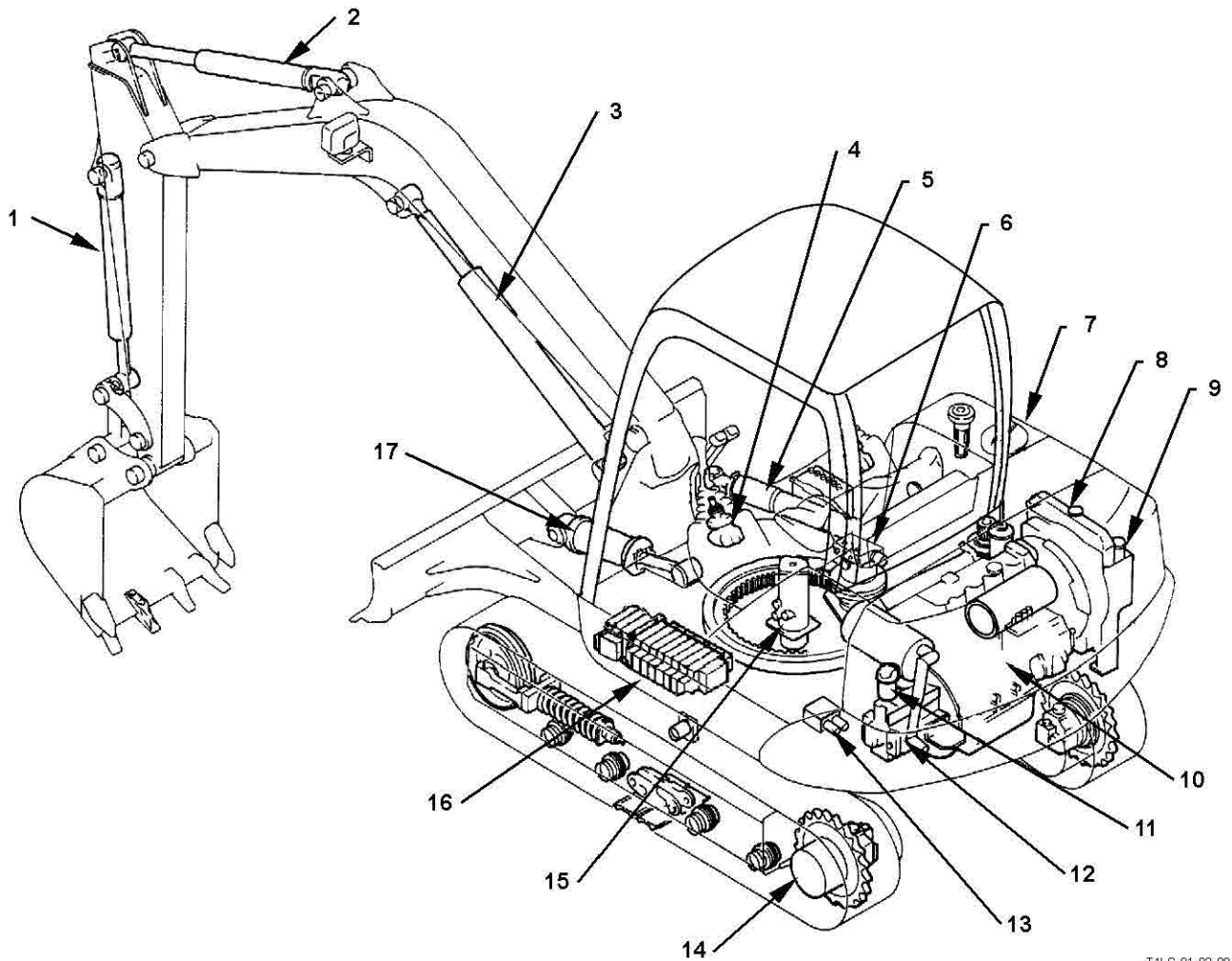
Main Component.....	T1-2-1
Electrical System.....	T1-2-2
Relays.....	T1-2-3
Monitor and Switches.....	T1-2-4

### Group 3 Component Specifications

Engine (ZAXIS30, 35).....	T1-3-1
Engine (ZAXIS40, 50).....	T1-3-4
Engine Accessories (ZAXIS30, 35).....	T1-3-7
Engine Accessories (ZAXIS40, 50).....	T1-3-8
Hydraulic Component.....	T1-3-9
Filter .....	T1-3-15
Electrical Component.....	T1-3-16

# GENERAL / Component Layout

## MAIN COMPONENTS



T1LS-01-02-004

- |  |                                      |                               |                     |
|--|--------------------------------------|-------------------------------|---------------------|
| 1 - Bucket Cylinder                        | 6 - Swing Device                     | 10 - Engine                   | 14 - Travel Device  |
| 2 - Arm Cylinder                           | 7 - Hydraulic Oil Tank,<br>Fuel Tank | 11 - Pilot Filter             | 15 - Center Joint   |
| 3 - Boom Cylinder                          | 8 - Radiator                         | 12 - Pump Device              | 16 - Control Valve  |
| 4 - Front Attachment/ Swing Pilot<br>Valve | 9 - Oil Cooler                       | 13 - 2-Unit Solenoid<br>Valve | 17 - Blade Cylinder |
| 5 - Boom Swing Cylinder                    |                                      |                               |                     |

**BUY NOW**

**Then Instant Download  
the Complete Manual  
Thank you very much!**