

# **PARTS MANUAL**

---

## **CHALLENGER**

**H14.00-18.00XM-12, -12EC  
(A214)**

**CUSTOMER EDITION**

---

# ***HYSTER***

**SECTIONS**

<b>1</b>	<b>FRAME</b>
<b>2</b>	<b>ENGINES</b>
<b>3</b>	<b>FUEL SYSTEM</b>
<b>4</b>	<b>ELECTRICAL SYSTEM</b>
<b>5</b>	<b>TRANSMISSION</b>
<b>6</b>	<b>DRIVE AXLE</b>
<b>7</b>	<b>STEERING SYSTEM</b>
<b>8</b>	<b>BRAKE SYSTEM</b>
<b>9</b>	<b>HYDRAULIC SYSTEM</b>
<b>10</b>	<b>MAST-TWO STAGE VISTA</b>
<b>11</b>	<b>MAST WITH EMPTY CONTAINER HANDLER</b>
<b>12</b>	<b>OPTIONS</b>
<b>13</b>	<b>NUMERICAL INDEX</b>

This Parts Manual is divided into 13 major sections which are listed above. Quick reference to these sections can be made by placing the right thumb on the tab of the desired section, bending the book back and thumbing the pages to the corresponding tab.

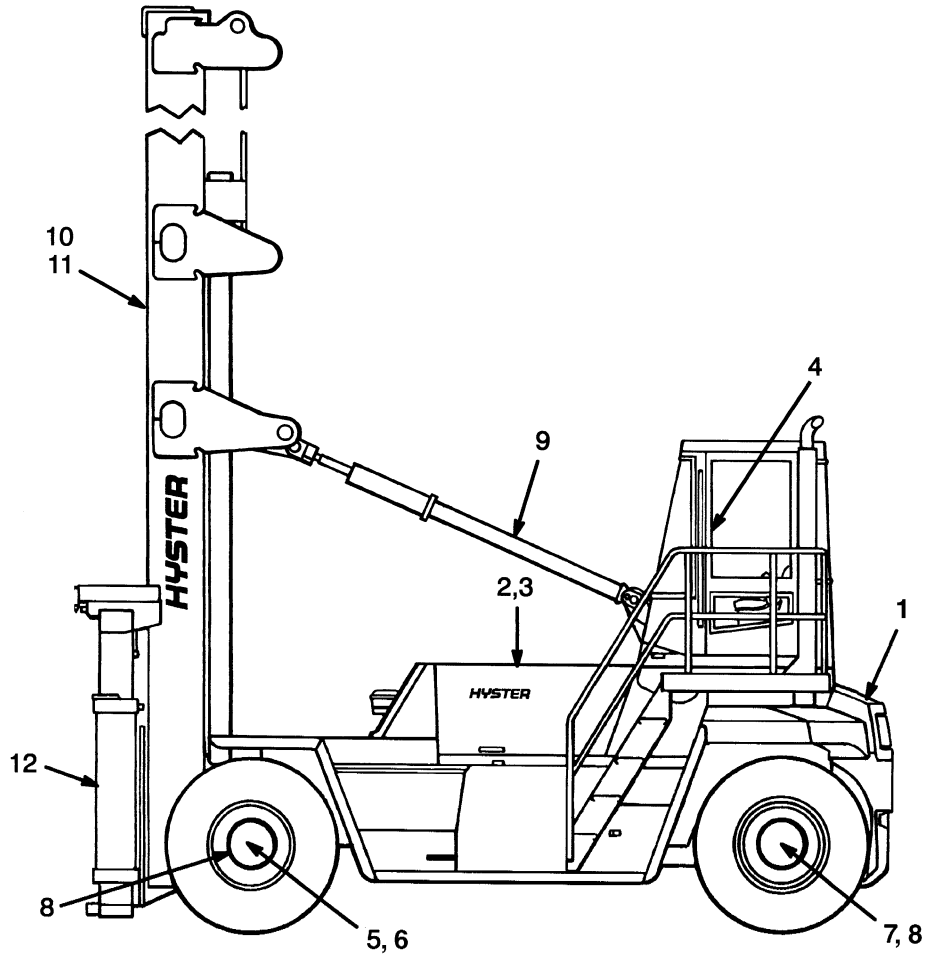
**1**

**FRAME**

**SECTION 1  
FRAME**

<b>DESCRIPTION</b>	<b>PAGE</b>
COUNTERWEIGHTS .....	1-48
COVERS	
EMPTY CONTAINER HANDLER.....	1-28
FORK LIFT TRUCK .....	1-30
DOORS .....	1-26
FENDERS	
EMPTY CONTAINER HANDLER.....	1-52
FLOOR PLATES AND COVERS	
EMPTY CONTAINER HANDLER.....	1-4
FORK LIFT TRUCK	
SHEET 1 OF 2 .....	1-8
SHEET 2 OF 2 .....	1-12
GENERAL TRUCK .....	1-2
HEATER .....	1-40
HEATER CONTROL.....	1-44
HOOD	
EMPTY CONTAINER HANDLER.....	1-34
FORK LIFT TRUCK .....	1-36
LABELS	
EXTERIOR	
EMPTY CONTAINER HANDLER.....	1-64
FORK LIFT TRUCK.....	1-66
INTERIOR.....	1-62
OPERATOR COMPARTMENT	
WITH CAB	
SHEET 1 OF 3 .....	1-18
SHEET 2 OF 3 .....	1-20
SHEET 3 OF 3 .....	1-24
WITHOUT CAB.....	1-16
SEAT	
HIGH BACK	
KAB .....	1-54
SUSPENSION SEAT	
GRAMMER HIGH BACK	
SHEET 1 OF 2 .....	1-56
SHEET 2 OF 2 .....	1-60
WINDSHIELD WASHER .....	1-46

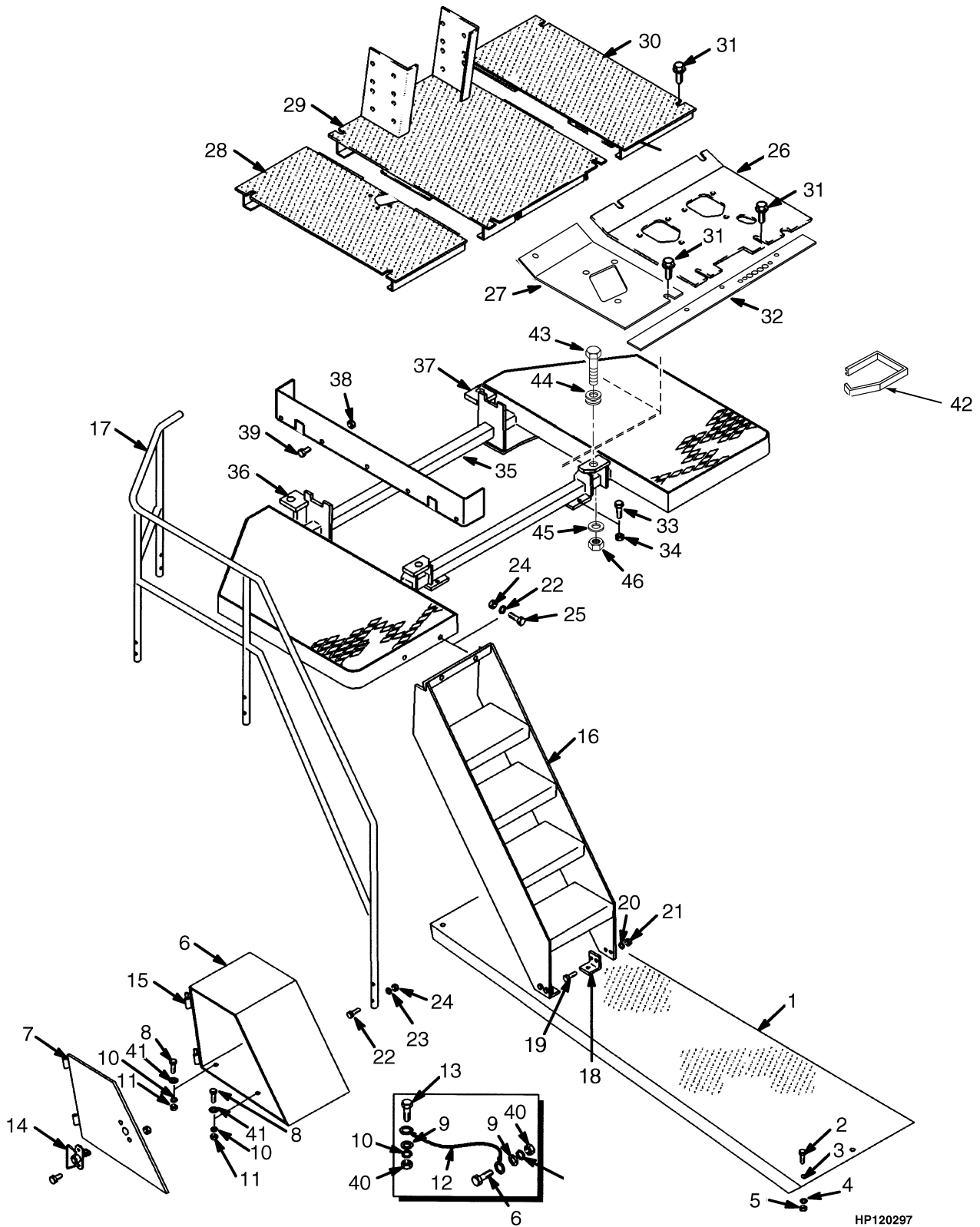
## GENERAL TRUCK (Figure 1-1)



HP990033

ITEM	PART NO.	DESCRIPTION	QTY
1	.....	Frame (☞ Figure 1-2) .....	1
2	.....	Engines (☞ Figure 2-85) .....	1
3	.....	Fuel System (☞ Figure 3-1) .....	1
4	.....	Electrical System (☞ Figure 4-1) .....	1
5	.....	Transmission (☞ Figure 5-1) .....	1
6	.....	Drive Axle (☞ Figure 6-1) .....	1
7	.....	Steering System (☞ Figure 7-2) .....	1
8	.....	Brake System (☞ Figure 8-1) .....	1
9	.....	Hydraulic System (☞ Figure 9-1) .....	1
10	.....	Mast-Two Stage Limited Free-Lift (☞ Figure 10-1) .....	1
11	.....	Mast-Empty Container Handler (☞ Figure 11-1) .....	1
12	.....	Options (☞ Figure 12-1) .....	1

## FLOOR PLATES AND COVERS (Figure 1-2) EMPTY CONTAINER HANDLER



**FLOOR PLATES AND COVERS  
EMPTY CONTAINER HANDLER**

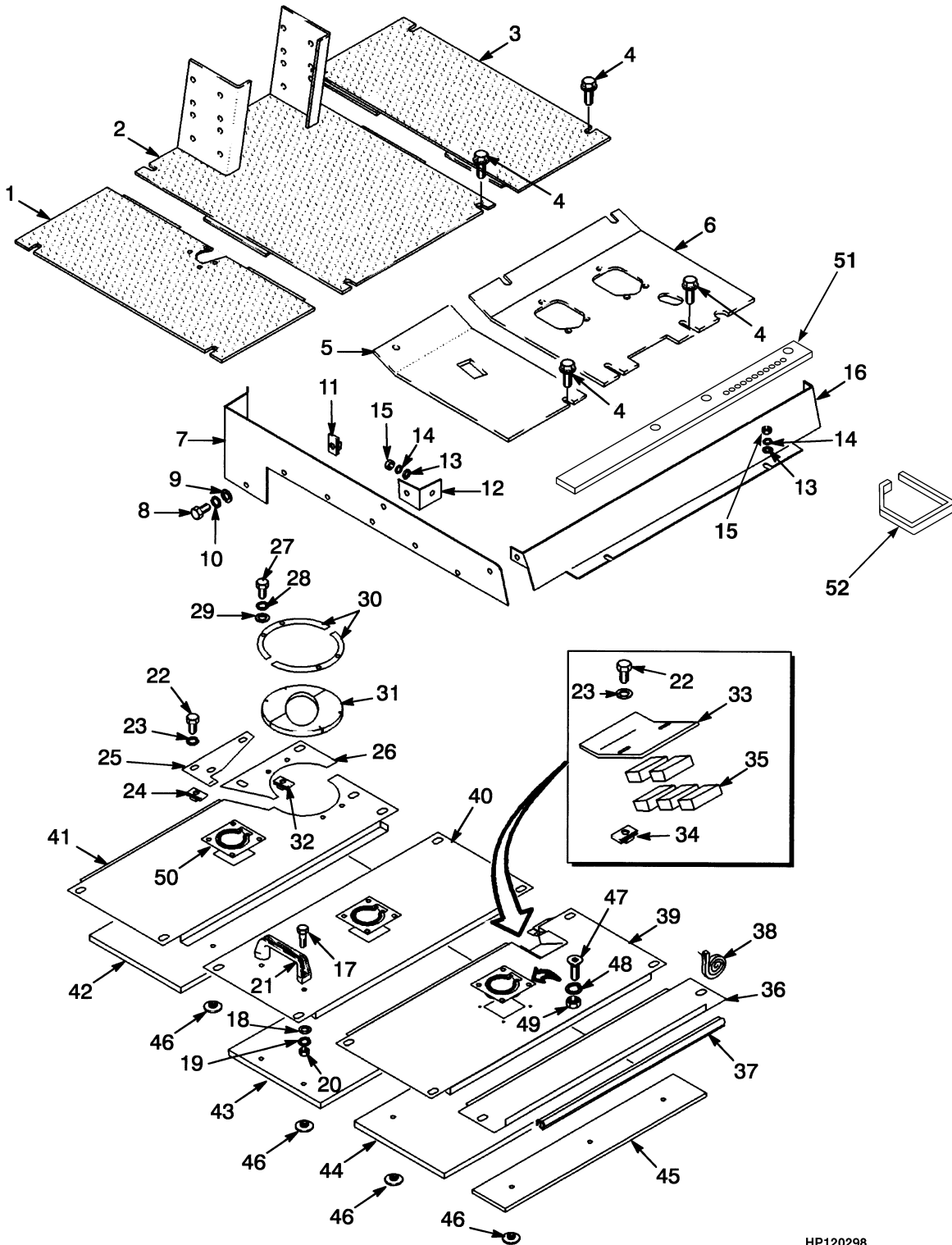
ITEM	PART NO.	DESCRIPTION	QTY
1	1541792	Running Board (RH) .....	1
1	1541791	Running Board (LH).....	1
2	246001	Capscrew.....	14
3	216735	Grommet.....	14
4	320162	Washer .....	42
5	300937	Locknut .....	14
6	1382005	Battery Box .....	1
6	1382017	Storage Box .....	1
7	1382007	Door (LH).....	1
7	1382018	Door (RH) .....	1
8	287854	Capscrew.....	8
9	320159	Washer .....	8
10	292682	Lockwasher.....	8
11	136692	Nut .....	8
12	1456622	Cable .....	2
13	296172	Capscrew.....	4
14	1391416	Latch .....	2
15	1301700	Bushing (Brass).....	4
16	1519654	Steps .....	2
17	1373739	Handrail (LH) .....	1
17	1373740	Handrail (RH).....	1
18	1382612	Bracket (Tier I Engine).....	4
19	302335	Capscrew.....	12
20	320159	Washer .....	12
21	136692	Nut .....	12
22	302349	Capscrew.....	8
23	320162	Washer .....	8
24	300937	Locknut .....	14
25	302343	Capscrew.....	6
26	1382649	Floorplate (LH Front) .....	1
27	1355113	Floorplate (RH Front) (Tier I Engine).....	1
27	1508108	Floorplate (RH Front) (Tier II Engine).....	1
28	1336914	Floorplate (RH).....	1
29	1465374	Floorplate (Center) .....	1
30	1325557	Floorplate (LH).....	1
31	329067	Screw.....	15
32	1336912	Seal (Tier I Engine).....	1
32	1508250	Seal (Tier II Engine).....	1
33	292563	Capscrew.....	4
34	316828	Nut .....	4
35	1545279	Platform .....	1
36	1373747	Plate (LH) .....	1
37	1373746	Plate (RH).....	1
38	316826	Nut .....	10
39	292514	Capscrew.....	10
40	316826	Nut .....	4
41	320160	Washer .....	8
42	1457097	Molding (Rubber).....	2
43	292535	Capscrew.....	4
44	1325519	Mount (Cab).....	4

## FLOOR PLATES AND COVERS EMPTY CONTAINER HANDLER

ITEM	PART NO.	DESCRIPTION	QTY
45	300939	Washer .....	4
46	300937	Locknut .....	4



## FLOOR PLATES AND COVERS (Figure 1-3) FORK LIFT TRUCK SHEET 1 OF 2



HP120298

## FLOOR PLATES AND COVERS FORK LIFT TRUCK SHEET 1 OF 2

ITEM	PART NO.	DESCRIPTION	QTY
1	1336914	Floorplate (RH).....	1
2	1465374	Floorplate (Center).....	1
3	1325557	Floorplate (LH).....	1
4	329067	Screw.....	15
5	1355113	Floorplate (RH Front) (Tier I Engine).....	1
5	1508108	Floorplate (RH Front) (Tier II Engine).....	1
6	1382649	Floorplate (LH Front).....	1
7	<b>a</b> 1393855	Plate (RH).....	1
7	<b>b</b> 1393853	Cover (RH).....	1
7	<b>a</b> 1393854	Cover (LH).....	1
7	<b>b</b> 1393852	Cover (LH).....	1
8	<b>a</b> 136749	Capscrew.....	18
8	<b>b</b> 136749	Capscrew.....	16
9	<b>a</b> 320158	Washer.....	18
9	<b>b</b> 320158	Washer.....	16
10	<b>a</b> 292681	Lockwasher.....	18
10	<b>b</b> 292681	Lockwasher.....	16
11	<b>a</b> 1384661	Nut.....	18
11	<b>b</b> 1384661	Nut.....	16
12	1393856	Bracket.....	2
13	320160	Washer.....	4
14	292682	Lockwasher.....	4
15	136692	Nut.....	4
16	<b>a</b> 1393858	Cover (Front).....	1
16	<b>b</b> 1393850	Cover (Front).....	1
17	292501	Capscrew.....	2
18	320156	Washer.....	2
19	292680	Lockwasher.....	2
20	136687	Nut.....	2
21	362030	Handle.....	1
22	136749	Capscrew.....	20
23	320158	Washer.....	20
24	1385535	Nut.....	18
25	1451594	Plate.....	1
26	1456189	Plate.....	1
27	296155	Capscrew.....	4
28	292679	Lockwasher.....	4
29	320155	Washer.....	4
30	1451555	Plate.....	2
31	1451522	Cover (Exhaust).....	2
32	1364542	Clip Nut.....	4
33	1451559	Bracket.....	1
34	1384661	Nut.....	2
35	217549	Foam Tape.....	AR
36	1451783	Cover.....	1
37	1393871	Seal.....	1
38	261158	Foam Tape.....	AR
39	1451717	Cover.....	1
40	1393872	Cover.....	1
41	1451782	Cover.....	1

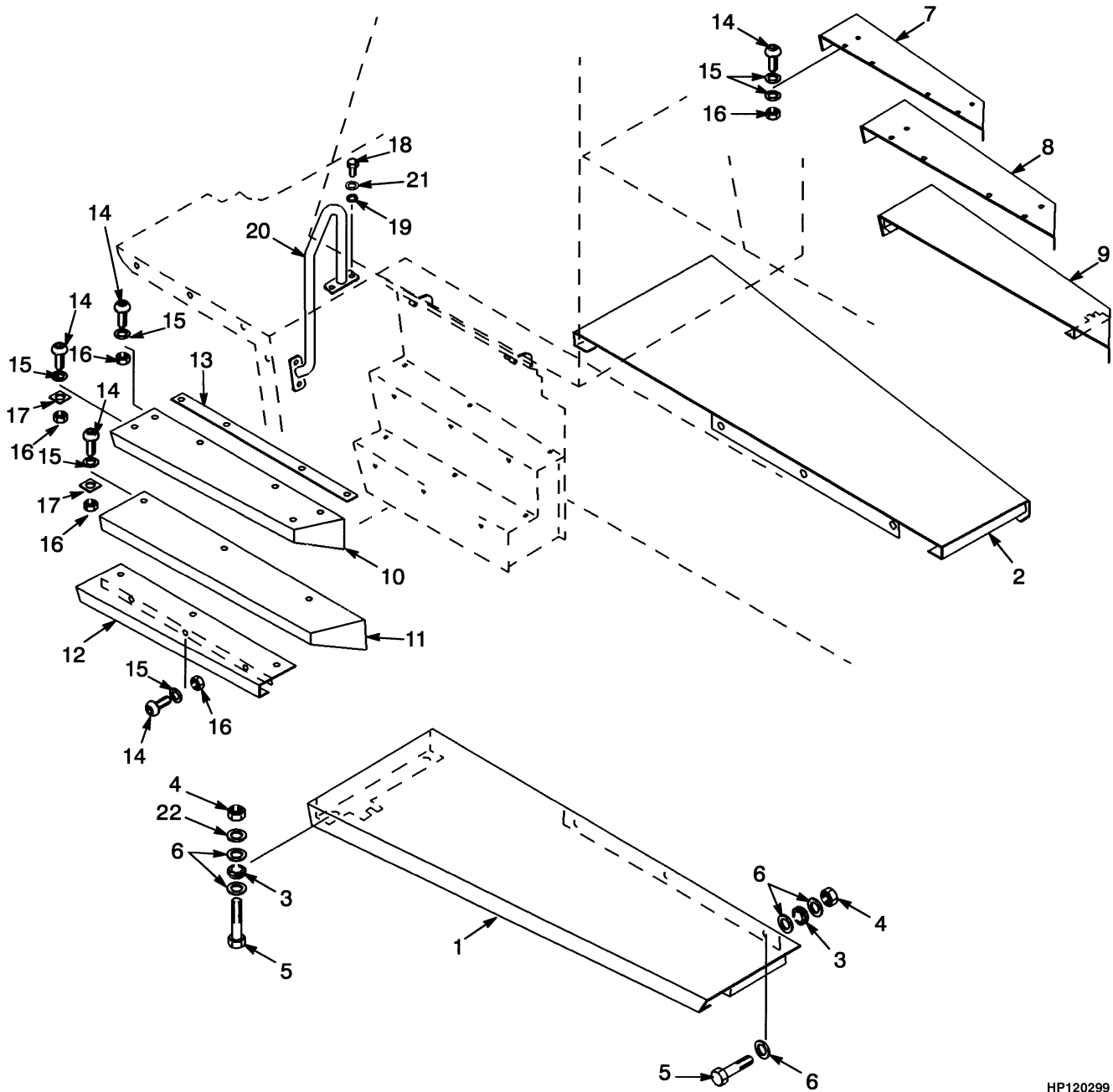
## FLOOR PLATES AND COVERS FORK LIFT TRUCK SHEET 1 OF 2

ITEM	PART NO.	DESCRIPTION	QTY
42	1451530	Insulation .....	1
43	1451529	Insulation .....	1
44	1451528	Insulation .....	1
45	1451527	Insulation .....	1
46	1361087	Button .....	10
47	296150	Capscrew .....	12
48	320154	Washer .....	12
49	815597	Nut .....	12
50	1451521	Handle .....	3
51	1336912	Seal (Tier I Engine).....	1
51	1508250	Seal (Tier II Engine).....	1
52	1457097	Molding (Rubber) (Not Illustrated) .....	2

**FOOTNOTES:**

- a** H16.00XM
- b** H18.00XM

## FLOOR PLATES AND COVERS (Figure 1-4) FORK LIFT TRUCK SHEET 2 OF 2



HP120299

## FLOOR PLATES AND COVERS FORK LIFT TRUCK SHEET 2 OF 2

ITEM	PART NO.	DESCRIPTION	QTY
1	ae	1450769 Running Board (LH).....	1
1	af	1541789 Running Board (LH).....	1
1	be	1450783 Running Board (LH).....	1
1	bf	1541787 Running Board (LH).....	1
2	ae	1450770 Running Board (RH).....	1
2	af	1541790 Running Board (RH).....	1
2	be	1450784 Running Board (RH).....	1
2	bf	1541788 Running Board (RH).....	1
3		216735 Grommet.....	10
4		300937 Locknut.....	10
5		246001 Capscrew.....	10
6	e	320162 Washer.....	30
6	f	320162 Washer.....	34
7	ac	1452202 Step.....	1
7	ad	1518324 Step.....	1
7	bc	1452197 Step.....	1
7	bd	1518171 Step.....	1
8	ac	1452203 Step.....	1
8	ad	1518323 Step.....	1
8	bc	1452198 Step.....	1
8	bd	1518100 Step.....	1
9	ac	1454945 Step.....	1
9	ad	1518322 Step.....	1
9	bc	1454949 Step.....	1
9	bd	1518099 Step.....	1
10	ae	1451497 Step (Top).....	1
10	af	1554855 Step (Top).....	1
10	bf	1451484 Step (Top).....	1
10	bf	1556307 Step (Top).....	1
11	ae	1451494 Step.....	1
11	ag	1554857 Step.....	1
11	ah	1589321 Step.....	1
11	be	1451489 Step.....	1
11	bg	1556306 Step.....	1
11	bh	1589330 Step.....	1
12	ae	1451503 Step.....	1
12	ag	1554858 Step.....	1
12	ah	1589323 Step.....	1
12	be	1451500 Step.....	1
12	bg	1556304 Step.....	1
12	bh	1589328 Step.....	1
13	a	1451478 Plate.....	1
13	b	1451477 Plate.....	1
14	d	296174 Capscrew.....	27
15	d	320160 Washer.....	30
16	d	316826 Nut.....	27
17		1451012 Spacer.....	8
18		287860 Capscrew.....	8
19		316826 Nut.....	8
20		1452277 Handrail (LH).....	1

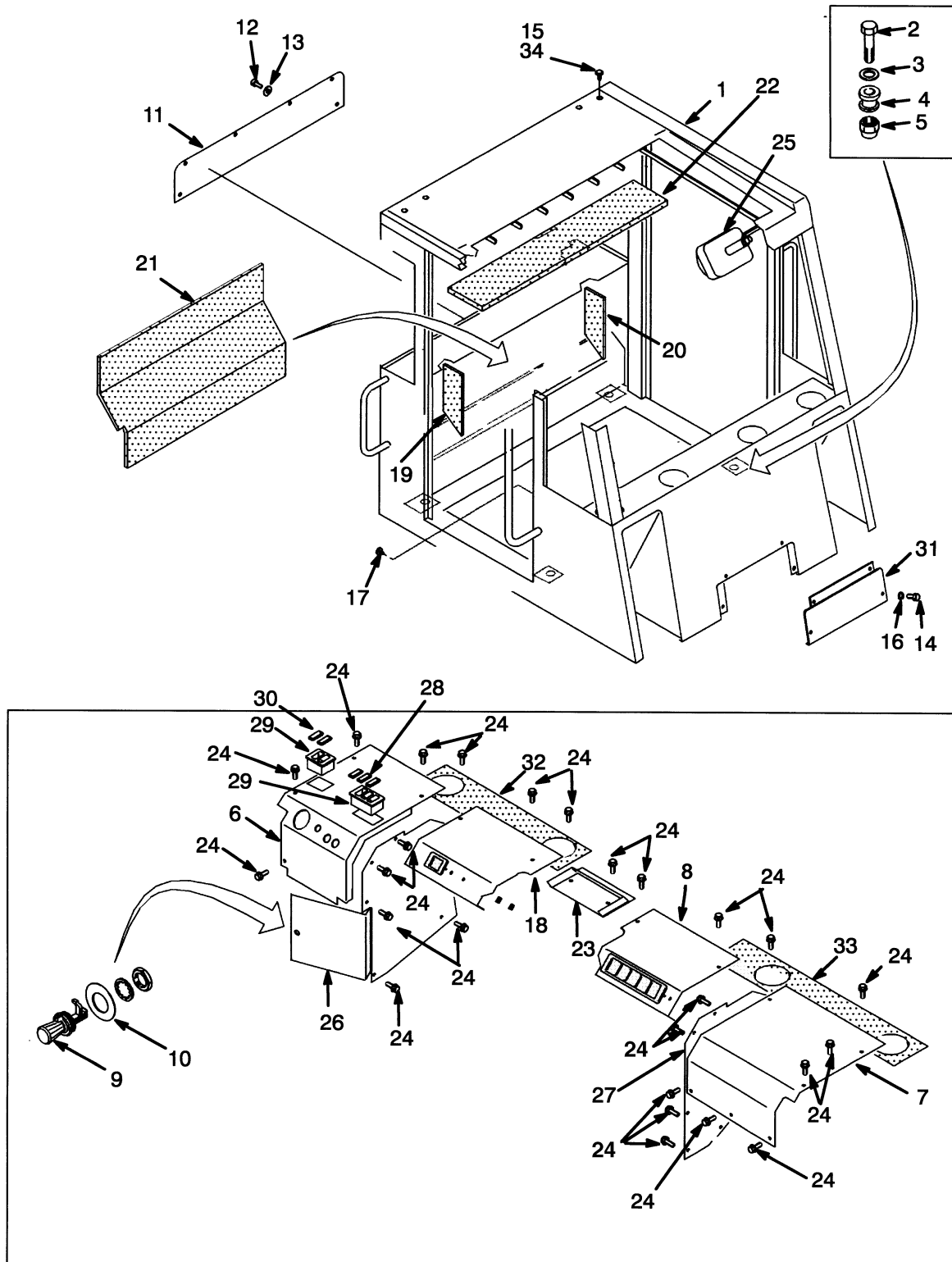
## FLOOR PLATES AND COVERS FORK LIFT TRUCK SHEET 2 OF 2

ITEM	PART NO.	DESCRIPTION	QTY
20	1452278	Handrail (RH).....	1
21	320159	Washer .....	16
22	320161	Washer .....	8

**FOOTNOTES:**

- a** H16.00XM
- b** H18.00XM
- c** ⇒ S/N A214E01842Z
- d** S/N A214E01843Z↔S/N A214E02062E
- e** ⇒ S/N A214E02062E
- f** S/N A214E02063E ⇒
- g** S/N A214E02063E↔S/N A214E02120C
- h** S/N A214E02121C ⇒

## OPERATOR COMPARTMENT (Figure 1-5) WITHOUT CAB

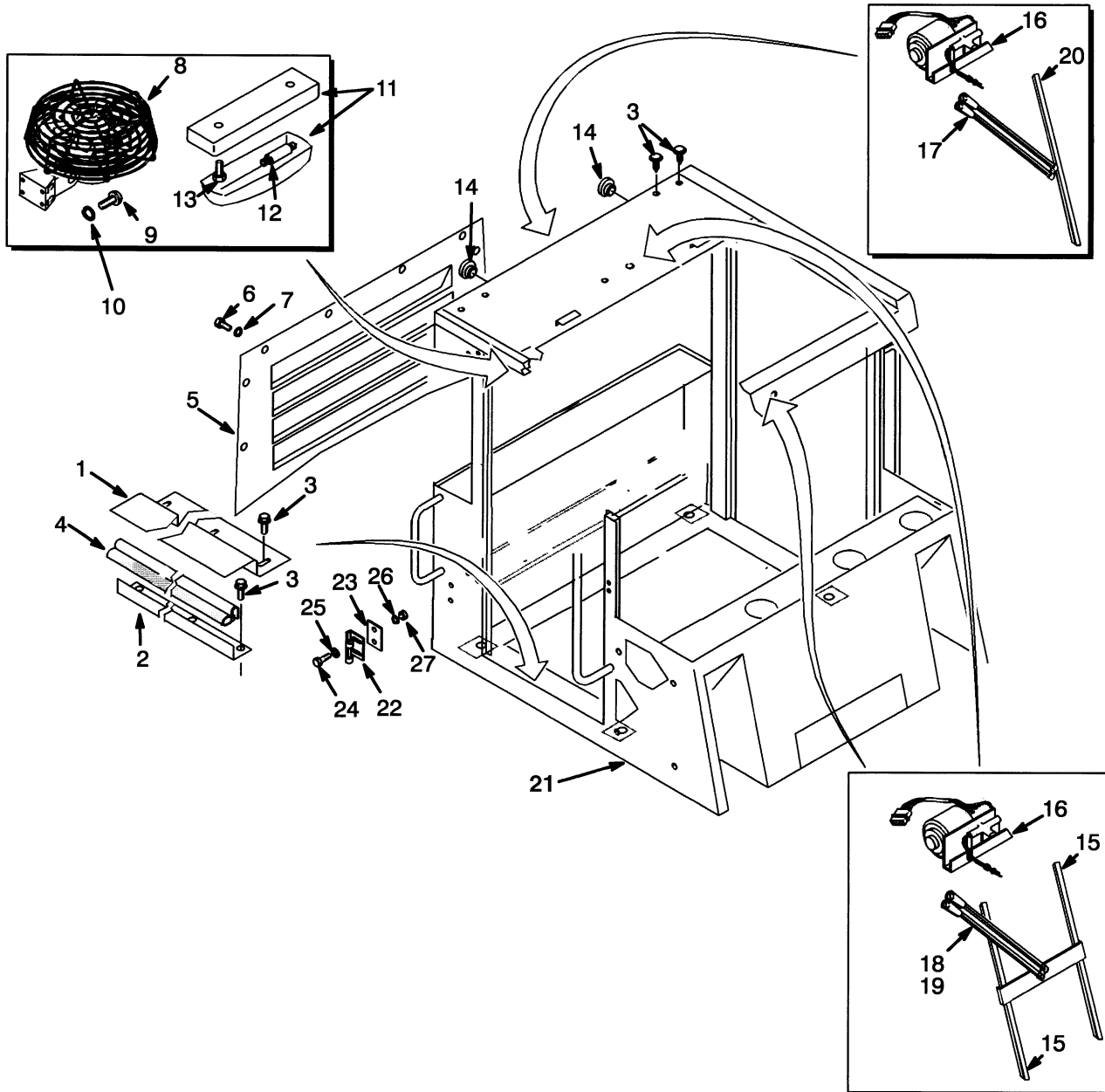


**OPERATOR COMPARTMENT  
WITHOUT CAB**

ITEM	PART NO.	DESCRIPTION	QTY
1	1373718	Operator Compartment.....	1
2	292535	Capscrew.....	4
3	300939	Washer .....	4
4	1325519	Mount (Cab).....	4
5	300937	Locknut .....	4
6	1451065	Cover (LH) (Tier I Engine) .....	1
6	1521834	Cover (LH) (Tier II Engine) .....	1
7	1325597	Cover (RH).....	1
8	1393754	Cover .....	1
9	1311288	Latch .....	1
10	1311287	Washer .....	1
11	1453421	Plate .....	1
12	1384659	Capscrew.....	6
13	1324577	Washer .....	6
14	369242	Capscrew.....	4
15	1307737	Fastener.....	4
16	375629	Washer .....	4
17	1304971	Fastener (Tier I Engine).....	2
18	1393755	Cover (Tier I Engine) .....	1
18	1507272	Cover (Tier II Engine) .....	1
19	1301263	Liner (LH Lower) .....	1
20	1301264	Liner (RH Lower) .....	1
21	1325623	Liner (Lower Center).....	1
22	1325624	Liner (Top) .....	1
23	1301189	Cover .....	1
24	1301177	Screw.....	31
25	1301286	Mirror .....	2
26	1311388	Door.....	1
27	1301255	Panel (RH Access) .....	1
28	376947	Bezel.....	1
29	376949	Cover .....	5
30	376948	Bezel.....	2
31	1393833	Plate .....	1
32	1301293	Gasket (LH) .....	1
33	1301292	Gasket (RH).....	1
34	280472	Sealant .....	AR



## OPERATOR COMPARTMENT (Figure 1-6) WITH CAB SHEET 1 OF 3



HP120319

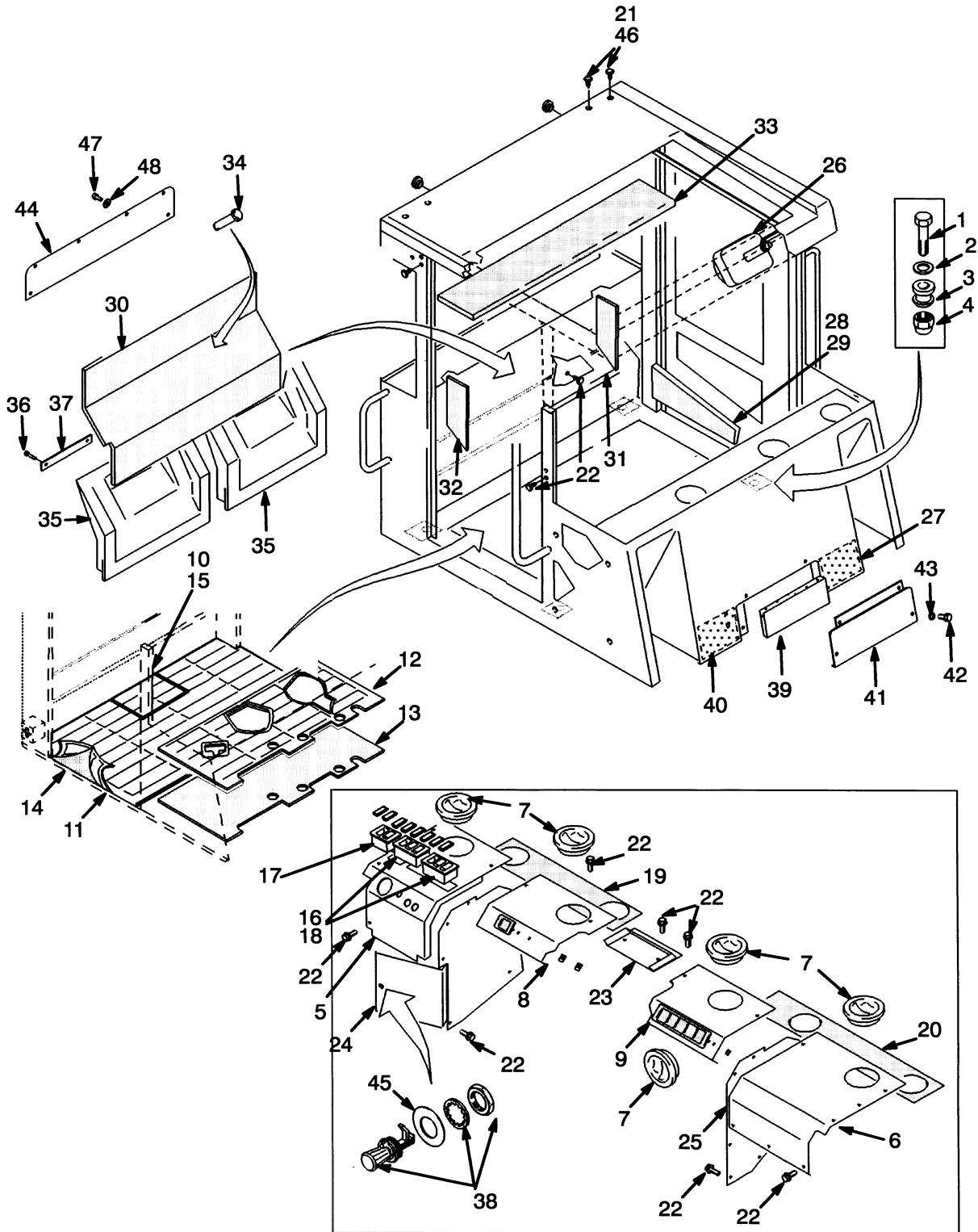
## OPERATOR COMPARTMENT WITH CAB SHEET 1 OF 3

**KEY:****A: Empty Container Handler****B: Fork Lift Truck**

ITEM	PART NO.	DESCRIPTION	QTY	
			A	B
1	1325567	Bracket.....	2	2
2	1325576	Bracket.....	2	2
3	309637	Screw.....	12	12
4	1325582	Seal .....	AR	AR
5	1384506	Cover .....	1	..
6	1384659	Capscrew.....	8	..
7	1324577	Washer .....	8	..
8	1312226	Fan Assembly .....	1	1
8	1307755	Fan .....	1	1
8	181045	Connector.....	1	1
8	134810	Terminal.....	1	1
8	1301783	Ring.....	1	1
9	16750	Screw.....	4	4
10	15152	Lockwasher.....	4	4
11	1301254	Dome Light .....	1	1
12	1307051	Bulb .....	1	1
13	302236	Screw.....	2	2
14	1311217	Plug .....	2	2
15	816046	Wiper Blade .....	4	4
16	<b>a</b> 1306902	Wiper Motor .....	3	3
16	<b>b</b> 1504017	Retrofit Kit.....	1	1
16	<b>b</b> 1517976	Wiper Motor Assembly .....	1	1
16	<b>b</b> 1504014	Wire Harness (Adapter) .....	1	1
17	816045	Wiper Arm (Rear) .....	1	1
18	1458609	Wiper Arm (Front).....	1	1
19	816372	Wiper Arm (Top) .....	1	1
20	1318443	Wiper Blade .....	1	1
21	1373701	Operator Compartment.....	1	..
21	1373725	Operator Compartment.....	..	1
22	<b>d</b> 1369520	Striker .....	..	2
22	<b>c</b> 1393748	Striker Plate .....	..	2
23	<b>d</b> 1373690	Spacer .....	..	2
24	287854	Capscrew.....	..	4
25	292682	Lockwasher.....	..	4
26	320159	Washer .....	..	4
27	136692	Nut.....	..	4

**FOOTNOTES:****a** ⇒ S/N A214E-1797**b** S/N A214E-1798 ⇒**c** D/B 01/1998 ⇒**d** ⇒ D/B 03/1998

## OPERATOR COMPARTMENT (Figure 1-7) WITH CAB SHEET 2 OF 3



HP120236

## OPERATOR COMPARTMENT WITH CAB SHEET 2 OF 3

**KEY:****A: Empty Container Handler****B: Fork Lift Truck**

ITEM	PART NO.	DESCRIPTION	QTY	
			A	B
1	292535	Capscrew.....	4	4
2	300939	Washer .....	4	4
3	1325519	Mount (Cab).....	4	4
4	300937	Locknut .....	4	4
5	1373691	Cover (LH) (Tier I Engine) .....	1	1
5	1521833	Cover (LH) (Tier II Engine) .....	1	1
6	1325550	Cover (RH).....	1	1
7	376276	Nozzle.....	5	5
8	<b>a</b> 1393750	Cover .....	1	..
8	<b>b</b> 1393756	Cover (Tier I Engine) .....	1	1
8	1507271	Cover (Tier II Engine) .....	1	1
9	1393753	Cover .....	1	1
10	1383855	Floormat .....	1	1
11	1355028	Floormat .....	1	1
12	1382832	Floormat .....	1	1
13	1355027	Barrier .....	1	1
14	1382833	Barrier .....	1	1
15	1383856	Barrier .....	1	1
16	376947	Bezel.....	2	2
17	376948	Bezel.....	1	1
18	376949	Cover .....	5	5
19	1301293	Gasket (LH) .....	1	1
20	1301292	Gasket (RH).....	1	1
21	1307737	Fastener.....	4	4
22	1301177	Screw.....	31	31
23	1301189	Cover .....	1	1
24	1311388	Door.....	1	1
25	1301255	Panel (RH Access) .....	1	1
26	1301286	Mirror .....	2	2
27	1393836	Liner.....	1	1
28	1311432	Liner (RH) .....	1	..
28	1377728	Liner (RH) .....	..	1
29	1311433	Liner (LH).....	1	..
29	1377729	Liner (LH).....	..	1
30	1325729	Liner (Lower Center).....	1	1
31	1311430	Liner (LH Lower) .....	1	1
32	1336986	Liner (RH Lower) .....	1	1
33	1456470	Liner (Top) .....	2	2
34	280644	Button .....	4	4
35	1342664	Liner.....	2	..
36	329067	Screw.....	2	..
37	1301297	Plate .....	1	1
38	1311288	Latch.....	1	1
39	1393835	Liner.....	1	1
40	1393834	Liner.....	1	1

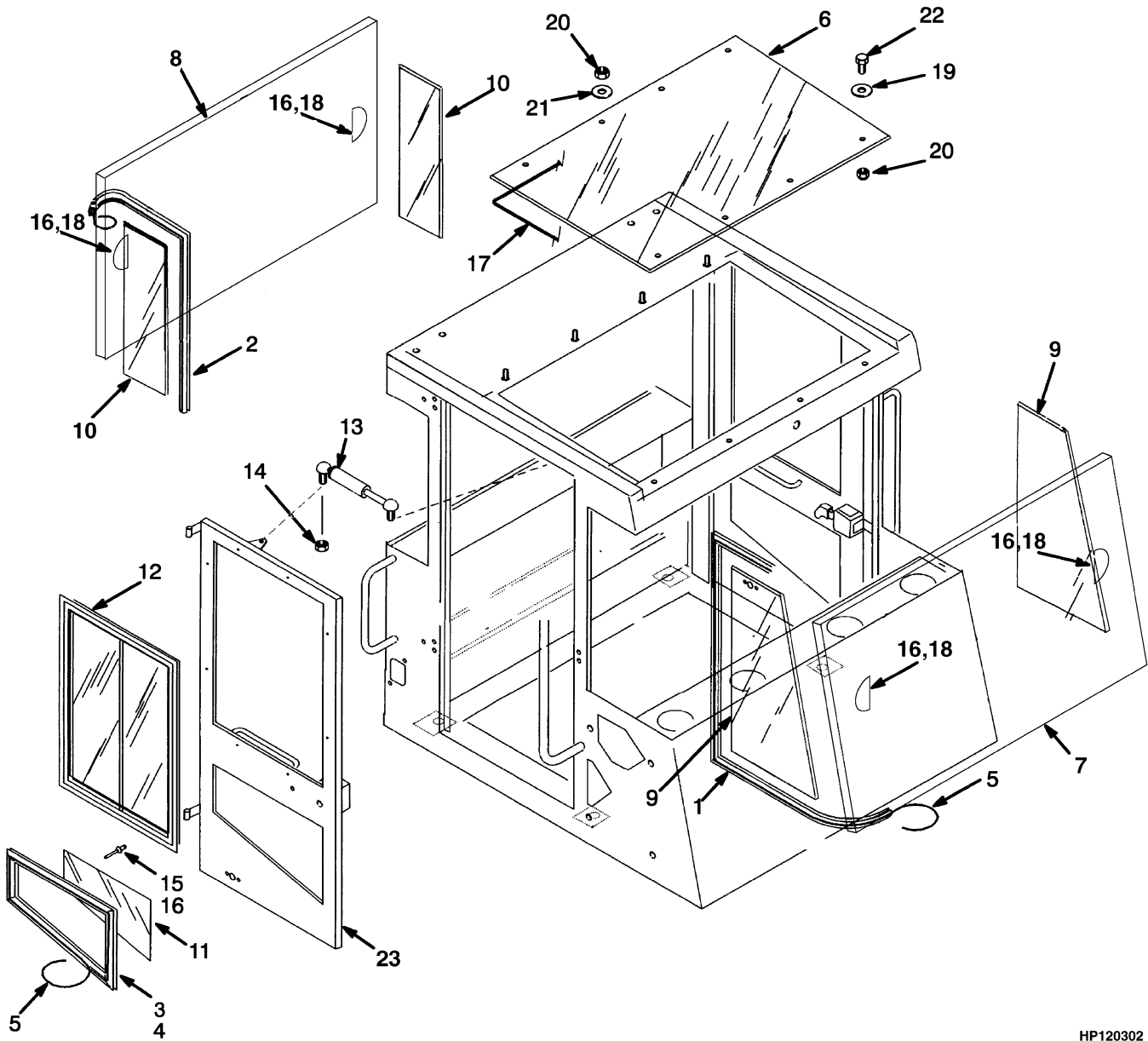
## OPERATOR COMPARTMENT WITH CAB SHEET 2 OF 3

ITEM	PART NO.	DESCRIPTION	QTY	
			A	B
41	1393833	Plate .....	1	1
42	369242	Capscrew .....	4	4
43	375629	Washer .....	4	4
44	1453421	Plate .....	..	1
45	1311287	Washer .....	1	1
46	280472	Sealant .....	AR	AR
47	1384659	Capscrew .....	..	6
48	1324577	Washer .....	..	6

**FOOTNOTES:**

- a** ⇒ S/N A214E-1806
- b** S/N A214E-1807 ⇒

## OPERATOR COMPARTMENT (Figure 1-8) WITH CAB SHEET 3 OF 3



HP120302

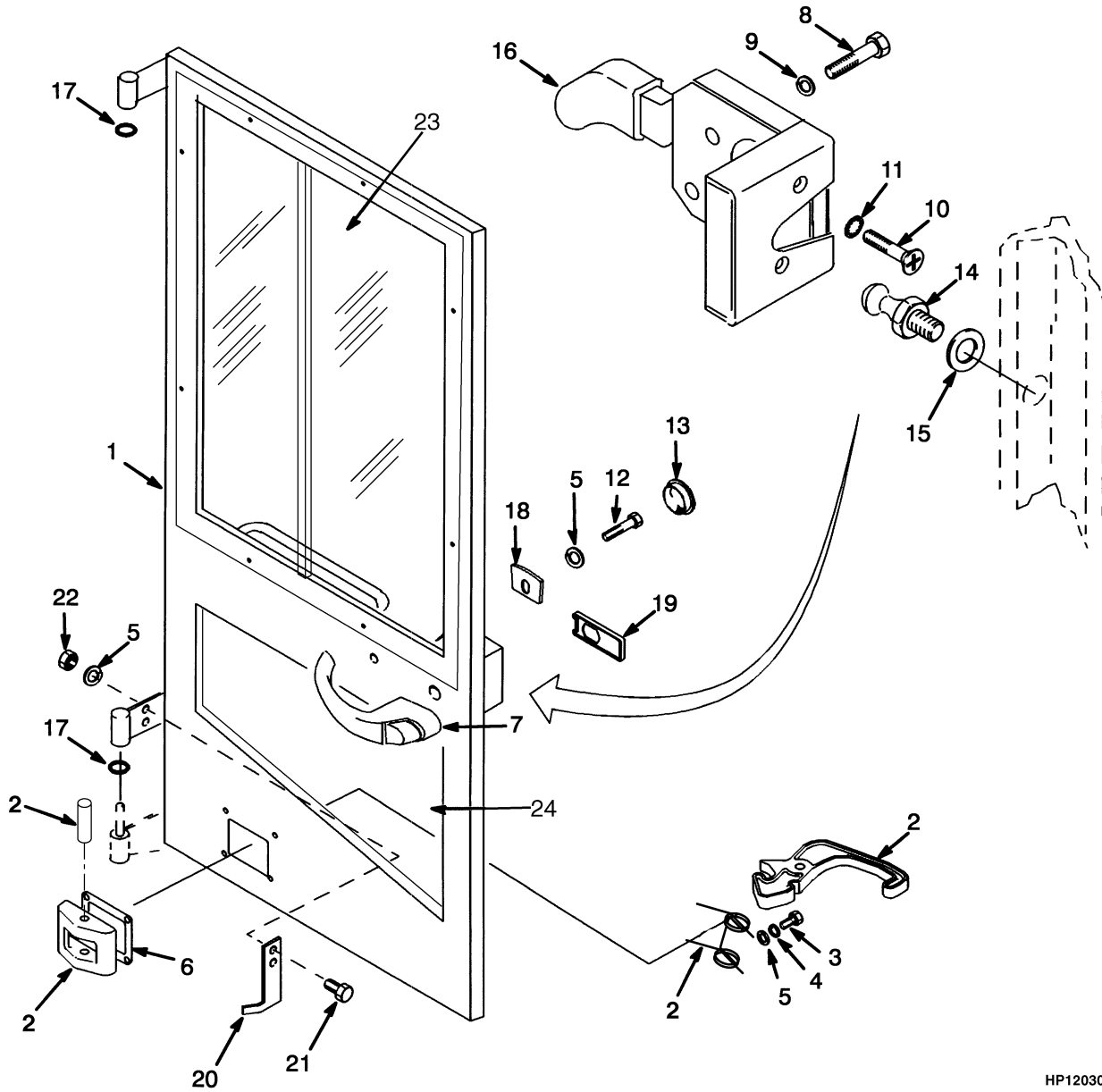
## OPERATOR COMPARTMENT WITH CAB SHEET 3 OF 3

**KEY:****A: Empty Container Handler****B: Fork Lift Truck**

ITEM	PART NO.	DESCRIPTION	QTY	
			A	B
1	1346426	Seal .....	1	1
2	376064	Seal .....	1	1
3	376867	Seal .....	1	1
4	376868	Seal .....	1	1
5	376922	Lock Strip.....	AR	AR
6	1595164	Window (Top).....	1	1
7	1346424	Glass (Front).....	1	1
8	1301372	Glass (Rear) .....	1	1
9	1346425	Glass .....	2	2
10	1301374	Glass (Rear) .....	2	2
11	1301375	Glass .....	2	2
12	1375984	Window (RH) .....	1	1
12	1377703	Glass .....	1	1
12	1377704	Glass .....	1	1
12	1377702	Latch.....	1	1
12	1377271	Screw .....	4	4
12	1375985	Window (LH).....	1	1
12	1377703	Glass .....	1	1
12	1377704	Glass .....	1	1
12	1377702	Latch.....	1	1
12	1377271	Screw .....	4	4
13	816380	Gas Spring.....	2	..
14	316835	Nut .....	4	..
15	265817	Rivet.....	16	16
16	3047334	Adhesive .....	AR	AR
17	318352	Seal .....	AR	AR
18	<b>a</b> 376840	Spacer .....	2	2
19	1324577	Washer .....	4	4
20	302401	Locknut .....	8	8
21	320160	Washer .....	4	4
22	1384659	Capscrew.....	4	4
23	1391422	Door (☞ Figure 1-9) .....	1	..
23	1391423	Door (☞ Figure 1-9) .....	1	..
23	1377726	Door (☞ Figure 1-9) .....	..	1
23	1377727	Door (☞ Figure 1-9) .....	..	1

**FOOTNOTES:****a** Half of Item Used in Four Locations

## DOORS (Figure 1-9)



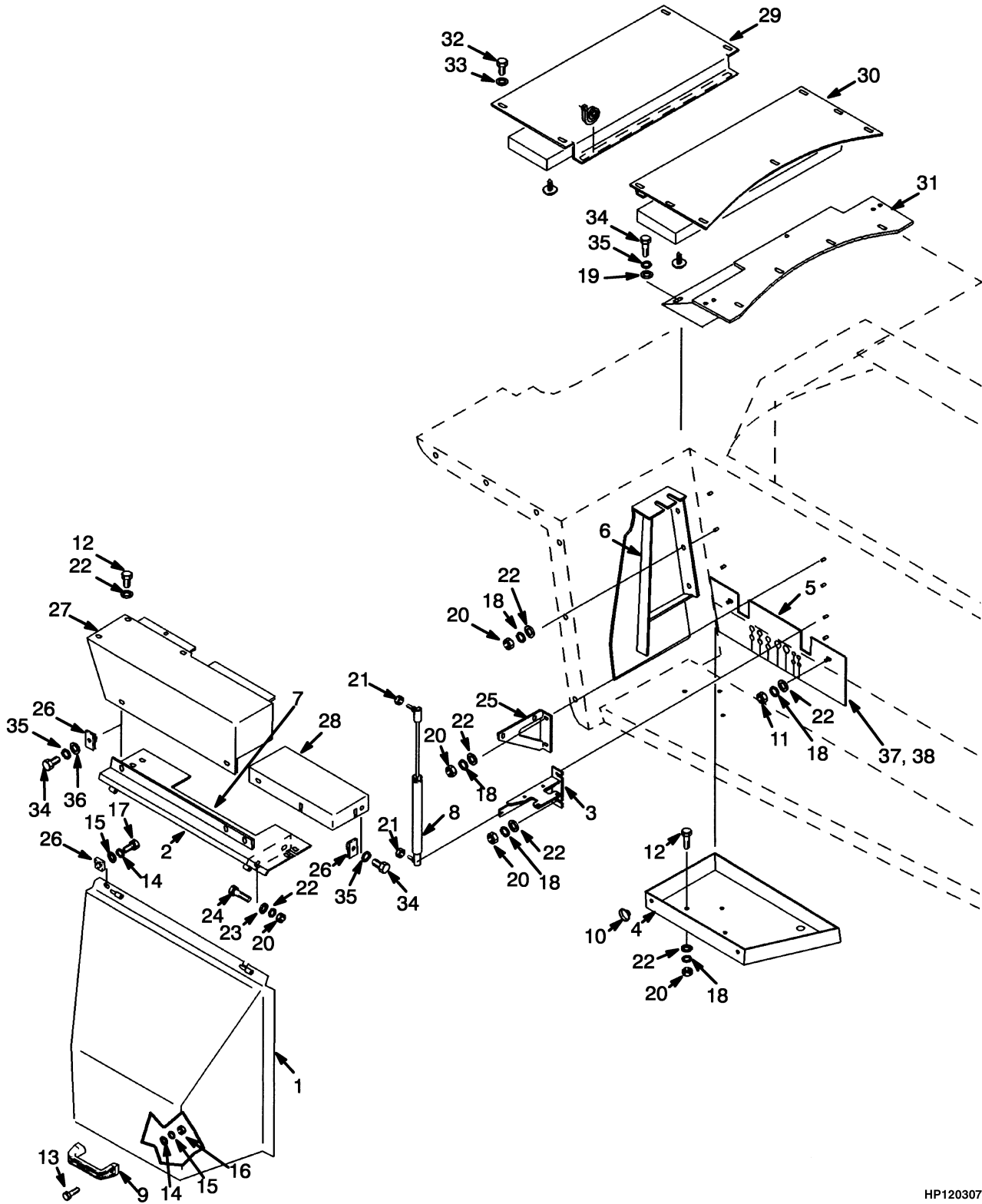
HP120303



**DOORS****KEY:****A: Empty Container Handler****B: Fork Lift Truck**

ITEM	PART NO.	DESCRIPTION	QTY	
			A	B
1	1377726	Door (LH) .....	..	1
1	1377727	Door (RH) .....	..	1
1	1391422	Door (LH) .....	1	..
1	1391423	Door (RH) .....	1	..
2	1374428	Latch Assembly .....	..	2
2	1356943	Latch.....	..	1
2	1356948	Bracket .....	..	1
2	1358734	Spring.....	..	1
2	226774	Pin .....	..	1
3	292500	Capscrew.....	..	8
4	320156	Washer .....	..	8
5	292680	Lockwasher.....	6	10
6	1369496	Seal .....	..	2
7	1319177	Door Handle .....	2	2
7	1360777	Key .....	2	2
8	302248	Screw.....	4	4
9	292679	Lockwasher.....	4	4
10	296464	Screw.....	4	4
11	296396	Washer .....	4	4
12	302256	Screw.....	2	2
13	309666	Plug .....	2	2
14	365344	Bolt .....	2	2
15	296423	Washer .....	2	2
16	1309824	Door Handle (LH) .....	1	1
16	1312450	Door Handle (RH).....	1	1
17	1301700	Bushing (Brass) .....	4	4
18	816378	Seal .....	2	..
19	816377	Seal .....	2	..
20	1391910	Plate (LH) .....	1	..
20	1393763	Plate (RH).....	1	..
21	292501	Capscrew.....	4	..
22	136692	Nut .....	4	..
23	1375985	Window (LH) (☞ Figure 1-8) .....	AR	AR
23	1375984	Window (RH) (☞ Figure 1-8) .....	AR	AR
24	1301375	Glass (☞ Figure 1-8) .....	AR	AR

## COVERS (Figure 1-10) EMPTY CONTAINER HANDLER



HP120307

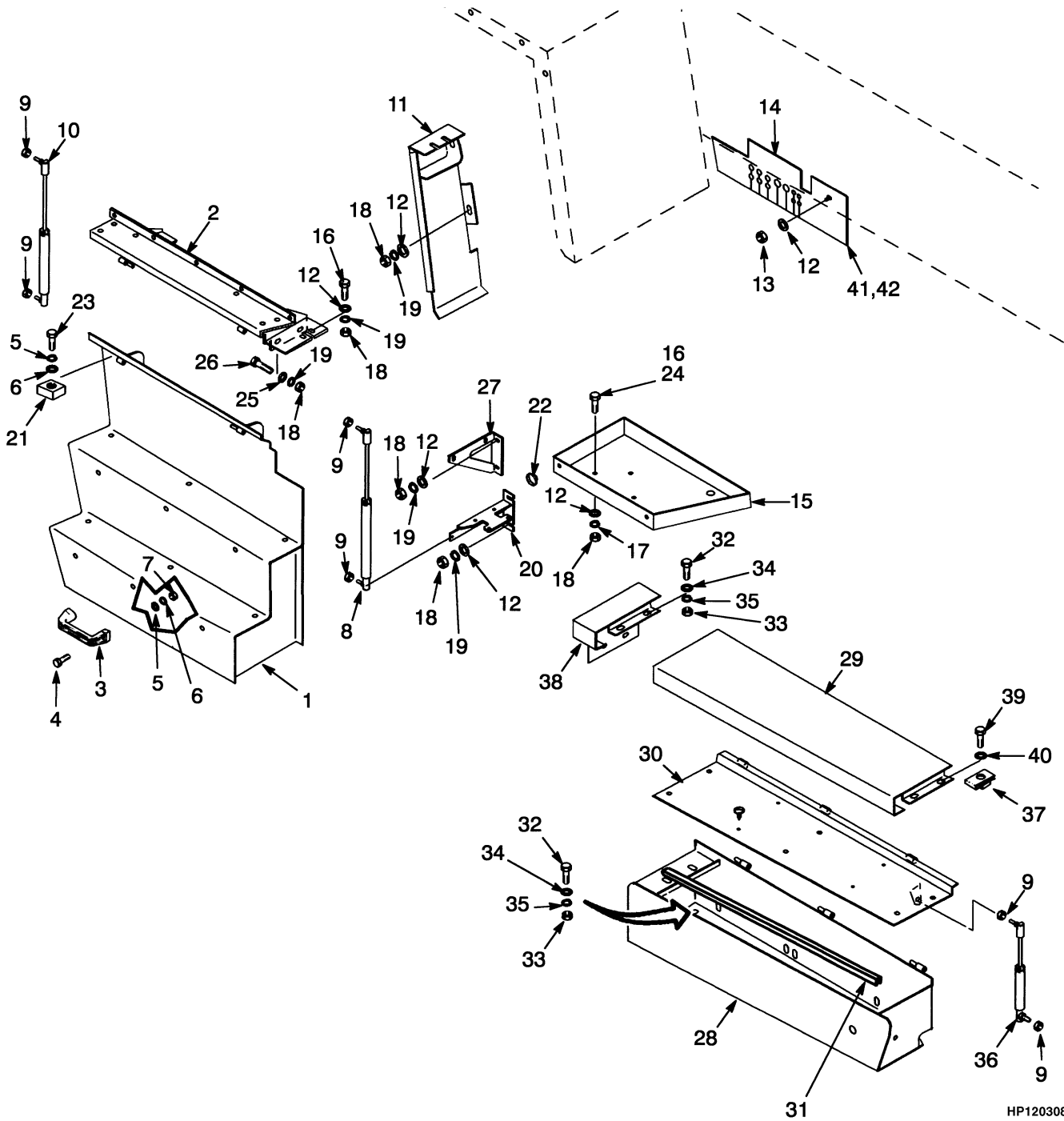
## COVERS EMPTY CONTAINER HANDLER

ITEM	PART NO.	DESCRIPTION	QTY
1	1382634	Cover .....	1
2	1383879	Cover .....	1
3	1382846	Bracket.....	1
4	<b>a</b> 1450761	Pan .....	1
4	<b>b</b> 1516916	Pan .....	1
5	<b>c</b> 1384507	Mud Guard.....	1
5	<b>d</b> 1465470	Mud Guard.....	1
6	1382848	Bracket.....	1
7	1383876	Stop Plate .....	1
8	1385584	Gas Spring.....	1
9	362030	Handle .....	1
10	1450759	Button .....	2
11	316836	Nut .....	2
12	287854	Capscrew.....	7
13	292501	Capscrew.....	2
14	320156	Washer .....	3
15	292680	Lockwasher.....	3
16	136687	Nut .....	2
17	292500	Capscrew.....	1
18	320160	Washer .....	16
19	292681	Lockwasher.....	6
20	136692	Nut .....	16
21	239503	Nut .....	2
22	292682	Lockwasher.....	16
23	320159	Washer .....	4
24	136985	Capscrew.....	2
25	1384667	Bracket.....	1
26	1384661	Nut .....	6
27	1384532	Cover (LH) .....	1
27	1384648	Cover (RH).....	1
28	1393861	Cover .....	1
29	1384652	Cover .....	1
30	1384653	Cover .....	1
31	1384651	Mount.....	1
32	329067	Screw.....	18
33	320158	Washer .....	23
34	136749	Capscrew.....	6
35	320160	Washer .....	4
36	292681	Lockwasher.....	6
37	1302109	Edge Trim .....	AR
38	238810	Adhesive.....	AR

**FOOTNOTES:**

- a** ⇒ S/N A214E-01842Z  
**b** S/N A214E-01843Z ⇒  
**c** ⇒ S/N A214E-1658  
**d** S/N A214E1659 ⇒ S/N PENDING PER ECN 68224-02

## COVERS (Figure 1-11) FORK LIFT TRUCK



HP120308

**COVERS  
FORK LIFT TRUCK**

ITEM	PART NO.	DESCRIPTION	QTY
1	<b>a</b> 1450972	Cover .....	1
1	<b>b</b> 1450971	Cover .....	1
2	<b>a</b> 1451515	Cover .....	1
2	<b>b</b> 1451514	Cover .....	1
3	362030	Handle .....	1
4	292501	Capscrew .....	2
5	320156	Washer .....	3
6	292680	Lockwasher .....	3
7	136687	Nut .....	2
8	1385584	Gas Spring .....	1
9	239503	Nut .....	6
10	1450762	Gas Spring .....	1
11	1451508	Side Cover .....	1
12	<b>i</b> 320160	Washer .....	33
12	<b>f</b> 320160	Washer .....	42
13	<b>i</b> 316836	Nut .....	1
14	<b>i</b> 1450757	Mud Guard .....	1
15	<b>c</b> 1450761	Pan .....	1
15	<b>d</b> 1516916	Pan .....	1
16	<b>i</b> 287854	Capscrew .....	7
16	<b>f</b> 287854	Capscrew .....	13
17	320166	Washer .....	3
18	136692	Nut .....	15
19	292682	Lockwasher .....	12
20	1450872	Bracket .....	1
21	1383876	Stop Plate .....	1
22	1450759	Button .....	2
23	292500	Capscrew .....	1
24	280472	Sealant .....	AR
25	<b>i</b> 320159	Washer .....	4
25	<b>f</b> 320159	Washer .....	20
26	136985	Capscrew .....	2
27	1384667	Bracket .....	1
28	<b>a</b> 1451452	Battery Box .....	1
28	<b>b</b> 1451451	Battery Box .....	1
29	<b>ae</b> 1451018	Step (Battery Box) .....	1
29	<b>ag</b> 1554866	Step (Battery Box) .....	1
29	<b>ah</b> 1589318	Step (Battery Box) .....	1
29	<b>be</b> 1451470	Step (Battery Box) .....	1
29	<b>bg</b> 1556302	Step (Battery Box) .....	1
29	<b>bh</b> 1589325	Step (Battery Box) .....	1
30	<b>ae</b> 1451476	Cover (Battery Box) .....	1
30	<b>ag</b> 1554865	Cover (Battery Box) .....	1
30	<b>ah</b> 1589320	Cover (Battery Box) .....	1
30	<b>be</b> 1450897	Cover (Battery Box) .....	1
30	<b>bg</b> 1556299	Cover (Battery Box) .....	1
30	<b>bh</b> 1589327	Cover (Battery Box) .....	1
31	1451450	Edge Trim .....	1
32	<b>i</b> 292527	Capscrew .....	8
32	292527	Capscrew .....	4
33	<b>i</b> 300937	Locknut .....	8

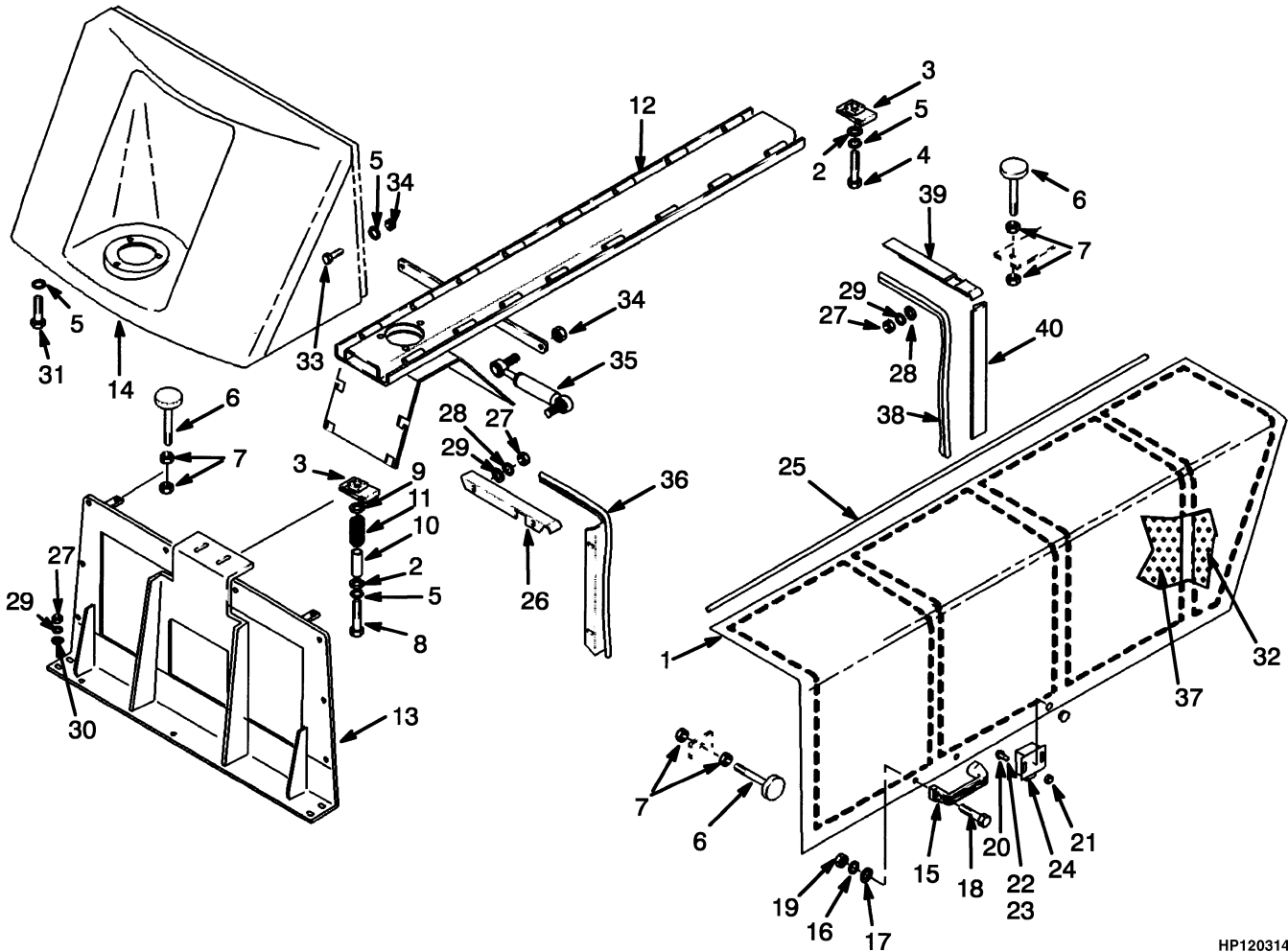
## COVERS FORK LIFT TRUCK

ITEM	PART NO.	DESCRIPTION	QTY
33	<b>g</b> 300937	Locknut .....	4
33	<b>h</b> 302402	Nut .....	4
34	<b>i</b> 320161	Washer .....	16
34	<b>f</b> 320161	Washer .....	8
35	<b>i</b> 292683	Lockwasher.....	8
35	<b>f</b> 292683	Lockwasher.....	4
36	1455087	Gas Spring.....	1
37	1385535	Nut .....	6
38	1451208	Step .....	1
39	136681	Capscrew.....	6
40	320158	Washer .....	12
41	1302109	Edge Trim .....	AR
42	238810	Adhesive .....	AR

**FOOTNOTES:**

- a** H16.00XM
- b** H18.00XM
- c** ⇒ S/N A214E-01842Z
- d** S/N A214E-01843Z ⇒
- e** ⇒ S/N A214E02062E
- f** S/N A214E02063E ⇒
- g** S/N A214E02063↔S/N A214E02120C
- h** S/N A214E02121C ⇒
- i** S/N A214E1658↔S/N A214E02062E

## HOOD (Figure 1-12) EMPTY CONTAINER HANDLER



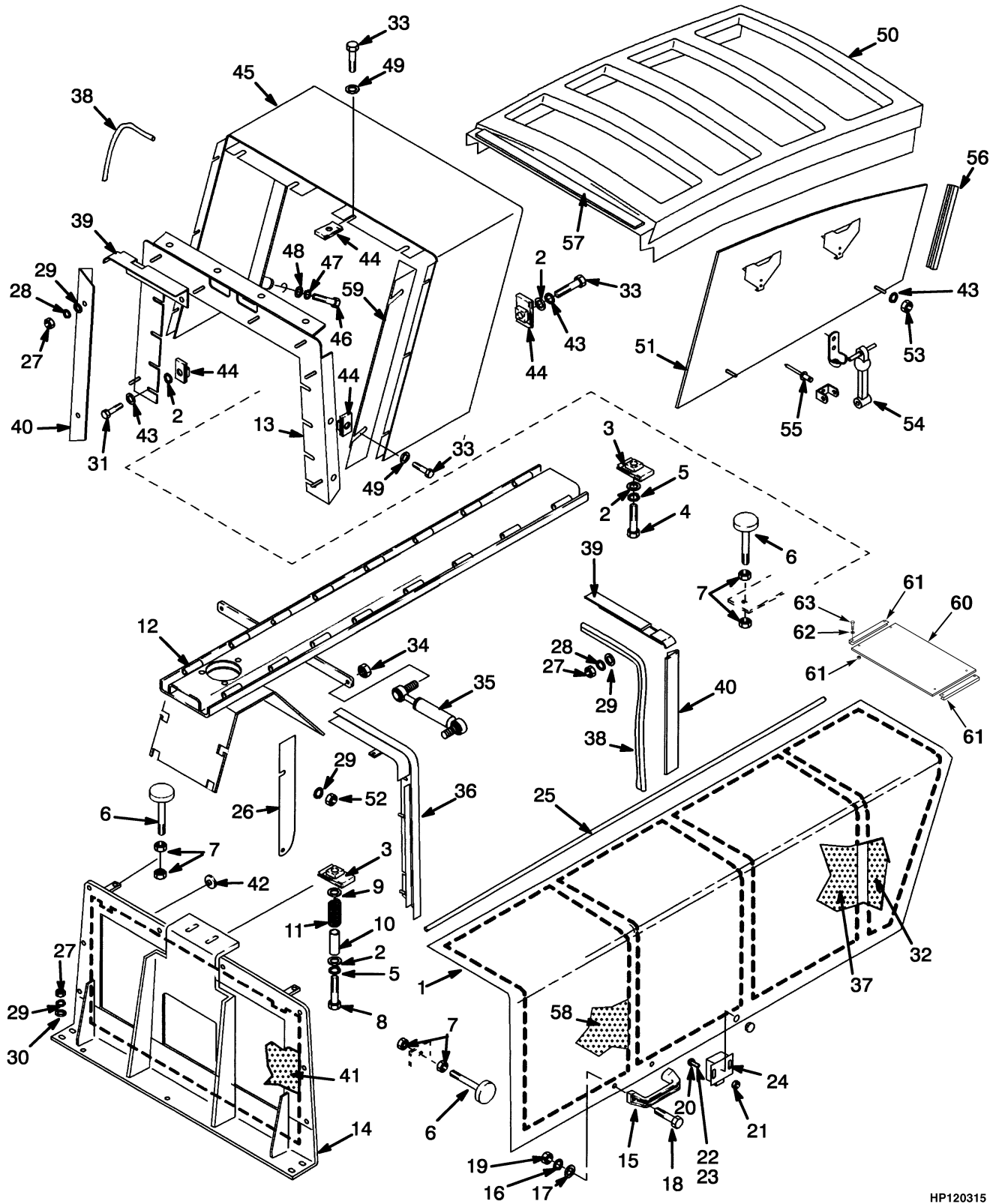
HP120314

**HOOD  
EMPTY CONTAINER HANDLER**

ITEM	PART NO.	DESCRIPTION	QTY
1	1373540	Hood (LH) .....	1
1	1373541	Hood (RH) .....	1
2	292681	Lockwasher.....	4
3	376397	Nut .....	4
4	18498	Capscrew.....	2
5	320157	Washer .....	20
6	367251	Stop Screw .....	8
7	15055	Nut .....	16
8	18516	Capscrew.....	2
9	296422	Washer .....	4
10	1301703	Spacer .....	2
11	1301702	Spring .....	2
12	1373743	Channel (Tier I Engine) .....	1
12	1516935	Channel (Tier II Engine) .....	1
13	1373527	Hood Support .....	1
14	1384627	Cover .....	1
15	362030	Handle .....	2
16	292680	Lockwasher.....	4
17	320156	Washer .....	4
18	292501	Capscrew.....	4
19	136687	Nut .....	4
20	296152	Capscrew.....	4
21	292668	Nut .....	4
22	292679	Lockwasher.....	4
23	320155	Washer .....	4
24	1382332	Latch.....	2
25	1382408	Rod .....	2
26	1373655	Bracket (LH).....	1
26	1373656	Bracket (RH) .....	1
27	136692	Nut .....	20
28	296421	Washer .....	16
29	292682	Lockwasher.....	20
30	296420	Washer .....	4
31	176640	Capscrew.....	4
32	1393842	Liner (LH).....	1
32	1393843	Liner (RH).....	1
33	136749	Capscrew.....	6
34	239503	Nut .....	10
35	1385584	Gas Spring.....	2
36	1373653	Bracket (LH).....	1
36	1373654	Bracket (RH) .....	1
37	1373547	Hood Liner .....	6
38	300088	Seal (Door) .....	AR
39	1373658	Bracket (RH) .....	1
39	1373657	Bracket (LH).....	1
40	1373659	Bracket.....	2



## HOOD (Figure 1-13) FORK LIFT TRUCK



HP120315

**HOOD  
FORK LIFT TRUCK****KEY:****A: H14.00-16.00XM****B: H18.00-20.00XM**

ITEM	PART NO.	DESCRIPTION	QTY	
			A	B
1	1455040	Hood (LH) .....	1	1
1	1455042	Hood (RH) .....	1	1
2	292681	Lockwasher.....	16	16
3	376397	Nut .....	4	4
4	18498	Capscrew.....	2	2
5	320157	Washer .....	4	4
6	367251	Stop Screw .....	8	8
7	15055	Nut .....	16	16
8	18516	Capscrew.....	2	2
9	296422	Washer .....	4	4
10	1301703	Spacer .....	2	2
11	1301702	Spring .....	2	2
12	1373744	Channel (Tier I Engine) .....	1	1
12	1516936	Channel (Tier II Engine) .....	1	1
13	1455466	Support (Tier I Engine) .....	1	1
13	1517676	Support (Tier II Engine) .....	1	1
14	1384683	Support.....	1	1
15	362030	Handle .....	2	2
16	292680	Lockwasher.....	4	4
17	320156	Washer .....	4	4
18	292501	Capscrew.....	4	4
19	136687	Nut .....	4	4
20	296152	Capscrew.....	4	4
21	292668	Nut .....	4	4
22	292679	Lockwasher.....	4	4
23	320155	Washer .....	4	4
24	1382332	Latch.....	2	2
25	1382408	Rod .....	2	2
26	1455049	Plate .....	1	1
27	136692	Nut .....	20	20
28	296421	Washer .....	16	16
29	292682	Lockwasher.....	22	22
30	296420	Washer .....	4	4
31	176640	Capscrew.....	8	8
32	1393842	Liner (LH).....	1	1
32	1393843	Liner (RH).....	1	1
33	136749	Capscrew.....	8	14
34	239503	Nut .....	4	4
35	1385584	Gas Spring.....	2	2
36	1455060	Plate (LH) .....	1	1
36	1455177	Plate (RH).....	1	1
37	1373547	Hood Liner .....	4	4
38	300088	Seal (Door) .....	AR	AR
39	1373657	Bracket (LH).....	1	1
39	1373658	Bracket (RH).....	1	1
40	1373659	Bracket.....	2	2

## HOOD FORK LIFT TRUCK

ITEM	PART NO.	DESCRIPTION	QTY	
			A	B
41	1393906	Liner.....	1	1
42	1361087	Button .....	4	4
43	296419	Washer .....	16	16
44	1384661	Nut .....	16	22
45	1393876	Cover .....	..	1
46	292540	Capscrew.....	..	2
47	292683	Lockwasher.....	..	2
48	320162	Washer .....	..	2
49	320158	Washer .....	4	10
50	1393878	Cover .....	1	1
51	1452829	Cover (LH) .....	1	1
51	1452830	Cover (RH).....	1	1
52	310102	Nut .....	2	2
53	302400	Locknut .....	4	4
54	1452820	Latch .....	4	4
55	222029	Rivet.....	8	8
56	1345675	Trim.....	2	2
57	261156	Foam Tape.....	AR	AR
58	1455044	Hood Liner .....	2	2
59	1455191	Bracket (LH).....	1	..
59	1455192	Bracket (RH) .....	1	..
60	1516593	Panel.....	2	2
61	1516594	Bracket.....	4	4
62	15175	Washer .....	8	8
63	16374	Capscrew.....	8	8
64	376397	Nut (Not Illustrated).....	8	8
65	15155	Lockwasher (Not Illustrated) .....	8	8



**HEATER****KEY:****A: Empty Container Handler****B: Fork Lift Truck**

ITEM	PART NO.	DESCRIPTION	QTY	
			A	B
1	1301326	Cover .....	1	1
2	1301708	Screw.....	4	4
3	320156	Washer .....	3	3
4	1301323	Spring .....	2	2
5	1301127	Filter.....	1	1
6	280472	Sealant .....	AR	AR
7	1301310	Intake.....	1	1
8	136681	Capscrew.....	4	4
9	239503	Nut .....	4	4
10	1301587	Blower Assembly .....	1	1
10	1368151	Blower .....	1	1
10	1453031	Resistor.....	1	1
11	1301389	Retainer.....	1	1
12	376137	Core.....	1	1
13	1301020	Heater Control (☞ Figure 1-15) .....	1	1
14	1301393	Flange.....	1	1
15	1325585	Support.....	1	1
16	1325548	Damper.....	1	1
17	1301121	Bracket.....	2	2
18	1311273	Gasket .....	1	1
19	1301395	Foam Tape.....	1	1
20	1301396	Foam Tape.....	1	1
21	1301397	Foam Tape.....	1	1
22	1301398	Foam Tape.....	2	2
23	1301404	Foam Tape.....	4	4
24	1301405	Foam Tape.....	1	1
25	1301589	Foam Tape.....	1	1
26	1301399	Foam (Sound Barrier).....	1	1
27	1301400	Clamp .....	1	1
28	292501	Capscrew.....	2	2
29	292680	Lockwasher.....	3	3
30	136687	Nut .....	3	3
31	287851	Capscrew.....	3	3
32	292681	Lockwasher.....	7	7
33	320157	Washer .....	6	8
34	1301177	Screw.....	11	11
35	1301001	Valve .....	1	1
36	1301598	Hose .....	1	1
37	279752	Grommet.....	4	4
38	130845	Clamp .....	6	6
39	18901	Clamp .....	1	1
40	302244	Screw.....	1	1
41	292679	Lockwasher.....	1	1
42	1301284	Screw.....	1	1
43	1313368	Hose .....	1	..
43	163520	Hose .....	..	1

**HEATER**

ITEM	PART NO.	DESCRIPTION	QTY	
			A	B
44	127852	Fitting (With Cab).....	1	1
44	14388	Fitting (Without Cab).....	1	1
45	246108	Sealant .....	AR	AR
46	323864	Strap Clamp.....	AR	AR
47	1313368	Hose .....	1	..
47	258493	Hose .....	..	1
48	1310611	Clamp .....	..	4
49	302400	Locknut.....	..	2
50	320159	Washer .....	..	4
51	302401	Locknut.....	..	2
52	164658	Grommet.....	..	2
53	1350911	Strap.....	2	..
54	255578	Clamp .....	..	1
55	1561538	Coil Sleeve.....	1	..

**BUY NOW**

**Then Instant Download  
the Complete Manual  
Thank you very much!**