

PARTS MANUAL

ELECTRIC

**J2.00-3.20XM
(A216)**

CUSTOMER EDITION

HYSTER

SECTIONS

1	FRAME
2	ELECTRICAL SYSTEM
3	DRIVE UNIT
4	STEERING SYSTEM
5	BRAKE/ACCELERATOR SYSTEM
6	HYDRAULIC SYSTEM
7	MAST-TWO STAGE LIMITED FREE-LIFT
8	MAST-THREE STAGE FULL FREE-LIFT
9	MAST-TWO STAGE FULL FREE-LIFT
10	OPTIONS
11	NUMERICAL INDEX

This Parts Manual is divided into 11 major sections which are listed above. Quick reference to these sections can be made by placing the right thumb on the tab of the desired section, bending the book back and thumbing the pages to the corresponding tab.

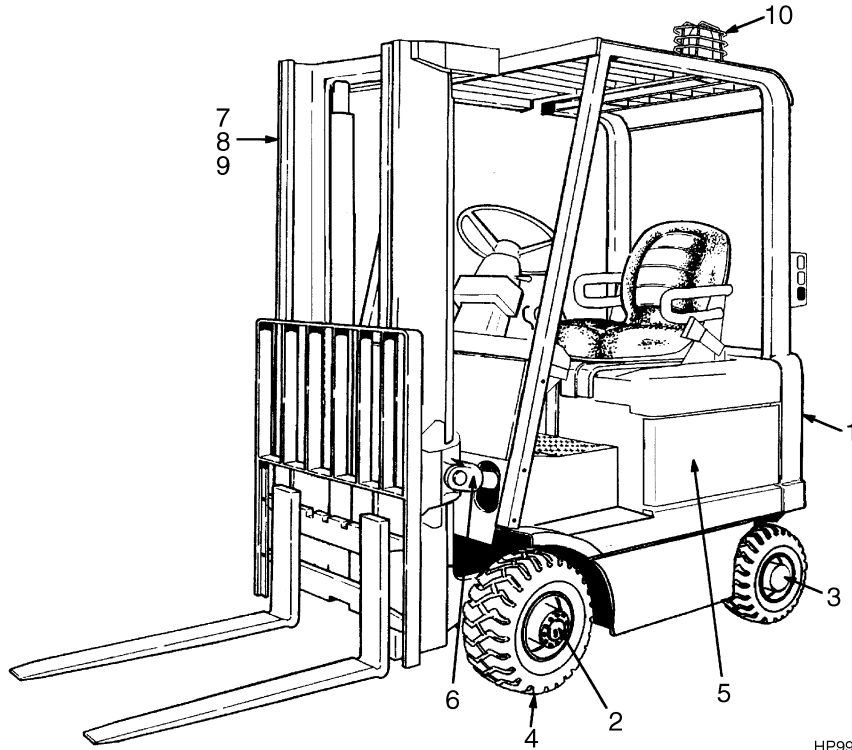
1

FRAME

**SECTION 1
FRAME**

DESCRIPTION	PAGE
COUNTERWEIGHT	
D/B 08/1998⇒	1-18
⇒D/B 08/1998	1-16
COVERS	
⇒S/N A216A-03971	1-6
S/N A216A-03972⇒	1-10
FORK	
J2.00-2.50XM.....	1-36
J3.00-3.20.....	1-37
FRAME.....	1-4
FULL SUSPENSION SEAT	
FIRST SHEET	
D/B 02/2000⇒.....	1-30
SECOND SHEET	
D/B 02/2000⇒.....	1-32
GENERAL TRUCK.....	1-2
HOOD	
D/B 08/1998⇒	1-24
⇒D/B 08/1998	1-20
LABELS AND PAINT	1-34
LOAD BACKREST	1-38
NON-SUSPENSION SEAT.....	1-26
OVERHEAD GUARD	
⇒S/N A216A-2428	1-12
S/N A216A-2429⇒	1-14
SEMI-SUSPENSION SEAT	
⇒D/B 02/2000	1-28

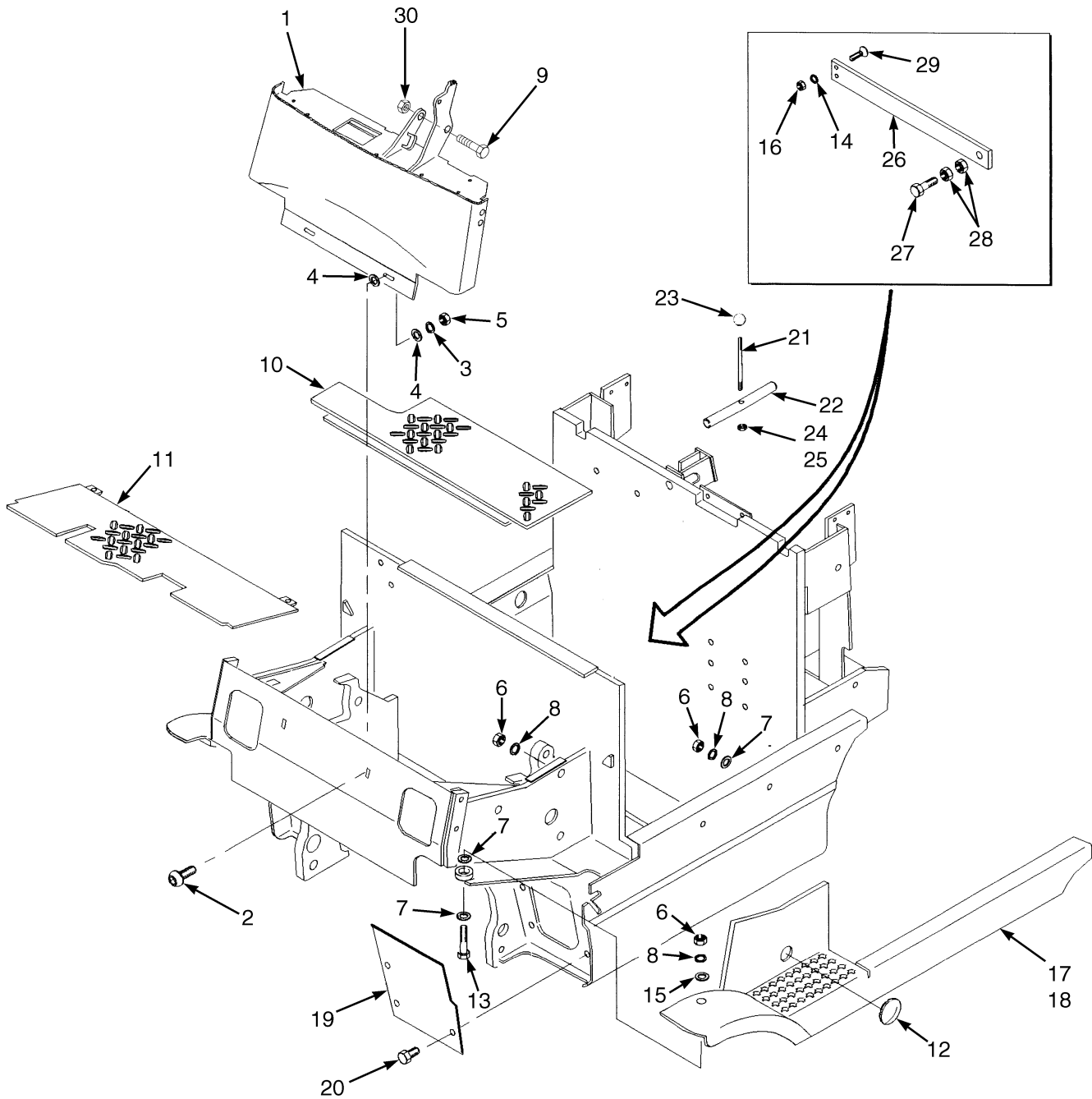
GENERAL TRUCK (Figure 1-1)



HP990130

ITEM	PART NO.	DESCRIPTION	QTY
1	Frame (☞ Figure 1-2)	1
2	Electrical System (☞ Figure 2-1)	1
3	Drive Unit (☞ Figure 3-1)	1
4	Steering System (☞ Figure 4-1)	1
5	Brake/Accelerator System (☞ Figure 5-1)	1
6	Hydraulic System (☞ Figure 6-1)	1
7	Mast-Two Stage Limited Free-Lift (☞ Figure 7-1)	1
8	Mast-Three Stage Full Free-Lift (☞ Figure 8-1)	1
9	Mast-Two Stage Full Free-Lift (☞ Figure 9-1)	1
10	Options (☞ Figure 10-1)	1

FRAME (Figure 1-2)



HP120681

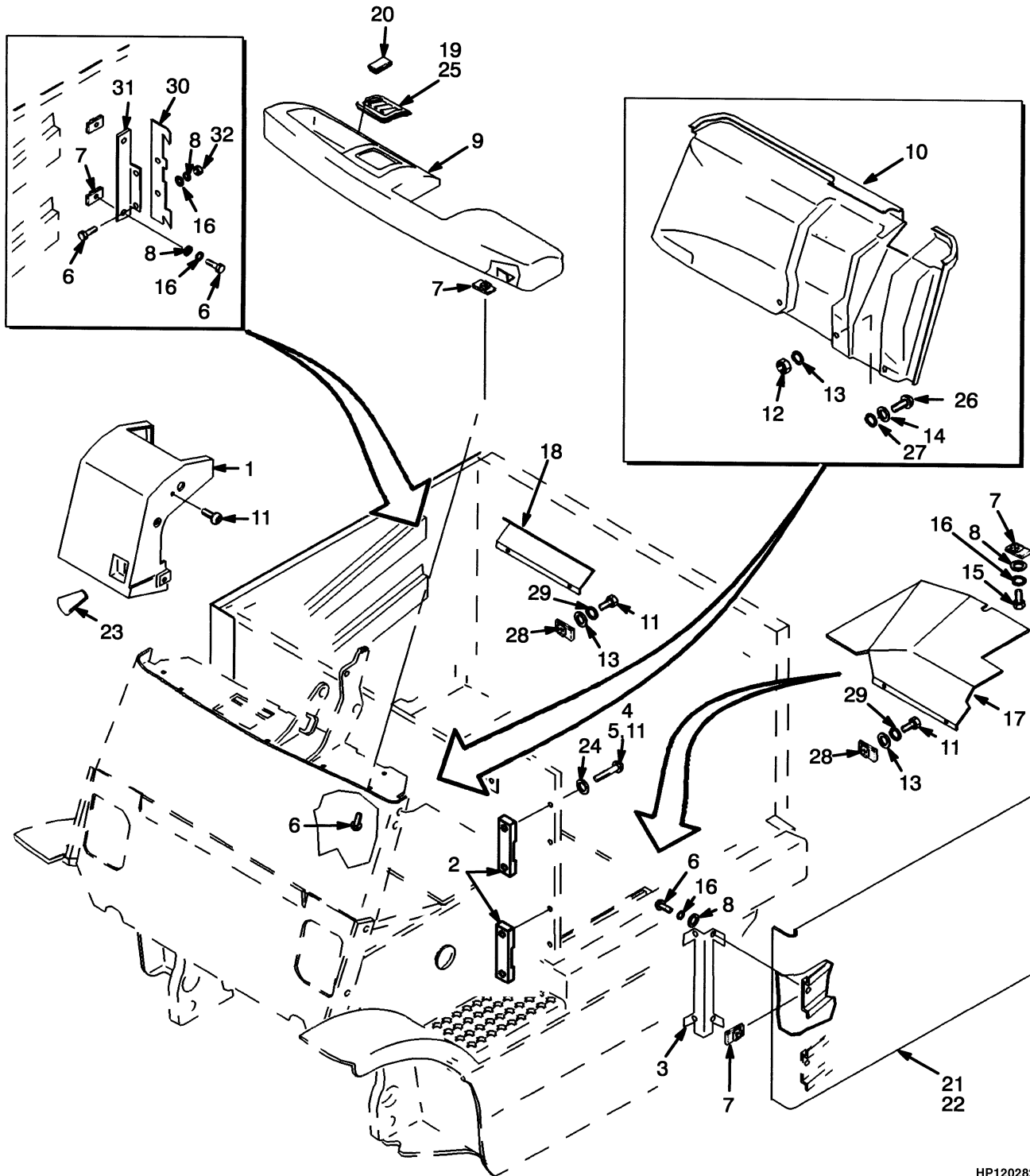
FRAME

ITEM	PART NO.	DESCRIPTION	QTY
1	h 1364710	Cowl.....	1
1	e 1390200	Cowl.....	1
1	d 1461197	Cowl.....	1
2	296167	Capscrew.....	2
3	292681	Lockwasher.....	2
4	320157	Washer.....	4
5	15056	Nut.....	2
6	136692	Nut.....	12
7	320160	Washer.....	14
8	292682	Lockwasher.....	12
9	18494	Capscrew.....	1
10	1385122	Floorplate.....	1
10	878220	Floormat.....	1
11	f 1364622	Floorplate.....	1
11	g 1380562	Floorplate.....	1
15	1350231	Plug.....	2
16	292519	Capscrew.....	2
17	a 1364498	Step (717 mm Battery Compartment) (LH).....	1
17	239503	Nut.....	2
17	292681	Lockwasher.....	2
17	296421	Washer.....	2
17	b 1364499	Step (861 mm Battery Compartment) (LH).....	1
17	ac 1364552	Step (717 mm Battery Compartment) (LH).....	1
17	bc 1364553	Step (861 mm Battery Compartment) (LH).....	1
18	a 1364555	Step (717 mm Battery Compartment) (RH).....	1
18	b 1364556	Step (861 mm Battery Compartment) (RH).....	1
18	ac 1364557	Step (717 mm Battery Compartment) (RH).....	1
18	bc 1364558	Step (861 mm Battery Compartment) (RH).....	1
19	1378906	Plate.....	2
20	316678	Screw.....	6
21	1377420	Rod.....	1
22	1377421	Pin.....	1
23	1380449	Knob.....	1
24	296128	Nut.....	1
25	264134	Sealant.....	AR
26	1379304	Plate.....	1
27	1379324	Capscrew.....	1
28	296136	Nut.....	2
29	296227	Capscrew.....	2
30	169874	Nut.....	1

FOOTNOTES:

- a** 1502 mm (Wheelbase)
- b** 1646 mm (Wheelbase)
- c** Wide Track
- d** S/N A216A-03972W ⇒
- e** D/B 12/1996⇔S/N A216A-03972W
- f** ⇒ S/N A216A-2213
- g** S/N A216A-2214 ⇒
- h** ⇒ D/B 12/1996

COVERS (Figure 1-3) (⇒S/N A216A-03971)



HP120282

COVERS
(⇒S/N A216A-03971)

ITEM	PART NO.	DESCRIPTION	QTY
1	c 1364648	Cover	1
1	d 1385798	Cover	1
2	g 1340218	Catch	4
2	h 878542	Plate	4
3	h 136749	Capscrew	4
3	g 1379491	Plate	4
4	g 251099	Adhesive	AR
4	h 313828	Nut	8
5	g 296165	Capscrew	8
6	h 296159	Capscrew	12
6	g 296159	Capscrew	20
7	h 325182	Nut	13
7	g 325182	Nut	21
8	h 292680	Lockwasher	1
8	g 292680	Lockwasher	13
9	i 1364719	Dash	1
9	j 1390203	Dash	1
10	e 1364725	Liner	1
10	f 1390321	Liner	1
11	h 296166	Capscrew	14
11	g 369242	Capscrew	10
12	239503	Nut	2
13	292681	Lockwasher	6
14	e 320157	Washer	2
14	f 320157	Washer	4
15	292501	Capscrew	1
16	h 197068	Washer	1
16	g 197068	Washer	9
17	1383170	Cover (LH)	1
18	1383173	Cover (RH)	1
19	1382311	Mounting Panel	2
20	1382313	Cover	3
21	ag 1364635	Cover (LH)	1
21	bg 1364636	Cover (LH)	1
21	ah 878545	Cover (LH)	1
21	bh 878547	Cover (LH)	1
22	ag 1364637	Cover (RH)	1
22	bg 1364638	Cover (RH)	1
22	ah 878546	Cover (RH)	1
22	bh 878548	Cover (RH)	1
23	1377483	Knob (RH)	1
24	296419	Washer	8
25	1382312	Mounting Panel	1
26	296167	Capscrew	2
27	e 1300117	Washer	2
28	1350282	Retainer	4
29	320158	Washer	4
30	g 1383758	Plate	2
31	g 1383759	Bracket (LH)	1

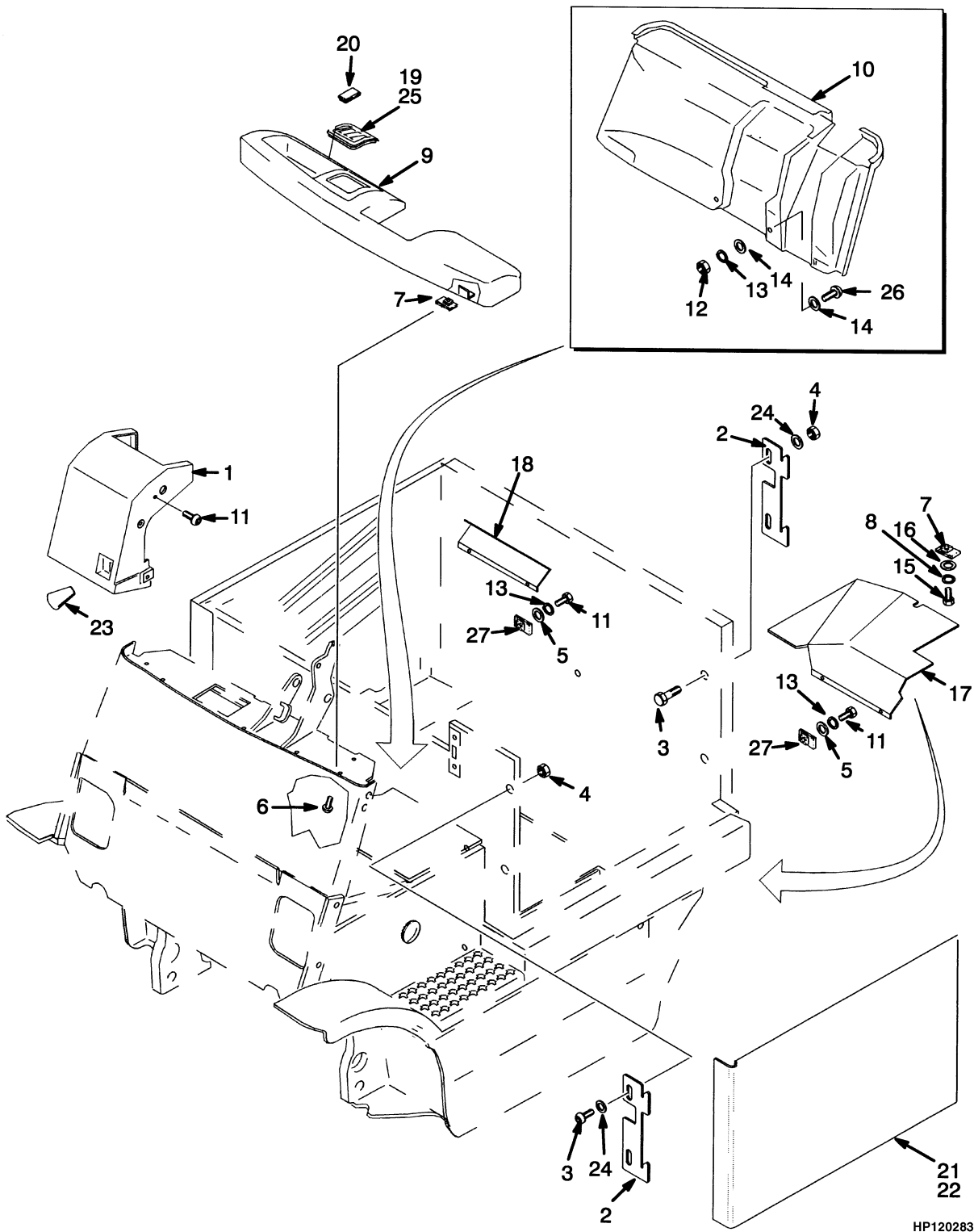
COVERS (⇒S/N A216A-03971)

ITEM	PART NO.	DESCRIPTION	QTY
31	g 1383760	Bracket (RH)	1
32	g 136687	Nut	4

FOOTNOTES:

- a** 717 mm Battery Compartment
- b** 861 mm Battery Compartment
- c** ⇒ S/N A216A-2392
- d** S/N A216A-2393 ⇒
- e** ⇒ S/N A216A-2428
- f** S/N A216A-2429 ⇒
- g** ⇒ D/B 06/1998
- h** D/B 06/1998 ⇒
- i** ⇒ D/B 12/1996
- j** D/B 12/1996 ⇒

COVERS (Figure 1-4) (S/N A216A-03972⇒)



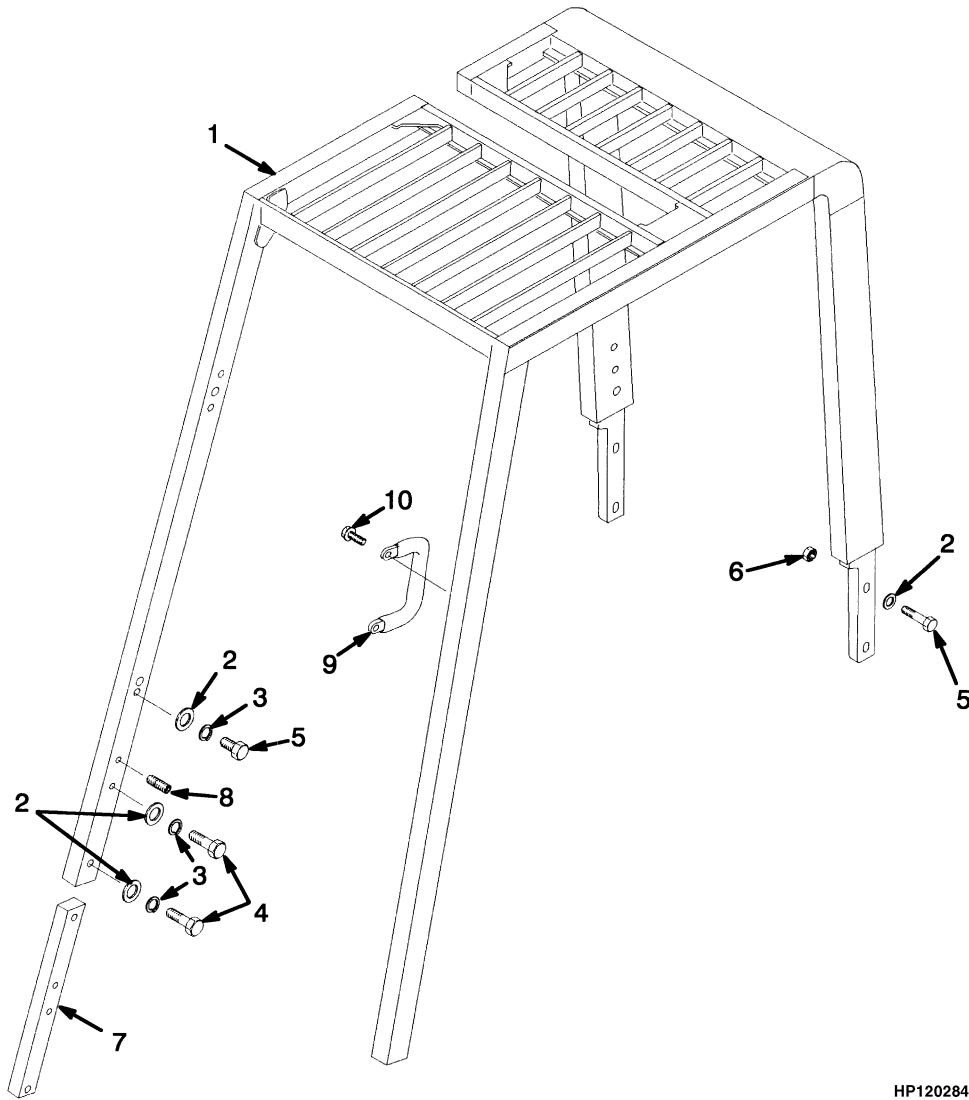
COVERS
(S/N A216A-03972⇒)

ITEM	PART NO.	DESCRIPTION	QTY
1	d 1385798	Cover	1
1	e 1478886	Cover	1
1	cf 1482306	Fastener (Panel)	6
1	cg 369242	Capscrew	4
2	878542	Plate	4
3	136749	Capscrew	4
4	313828	Nut	8
5	320158	Washer	4
6	296159	Capscrew	12
7	325182	Nut	13
8	292680	Lockwasher	1
9	1461070	Dash	1
10	1461198	Liner	1
11	296166	Capscrew	14
12	239503	Nut	2
13	292681	Lockwasher	6
14	320157	Washer	8
15	292501	Capscrew	1
16	197068	Washer	1
17	1383170	Cover (LH)	1
18	1383173	Cover (RH)	1
19	1382311	Mounting Panel	2
20	1382313	Cover	3
21	a 878545	Cover (LH)	1
21	b 878547	Cover (LH)	1
22	a 878546	Cover (RH)	1
22	b 878548	Cover (RH)	1
23	1377483	Knob (RH)	1
24	296419	Washer	8
25	1382312	Mounting Panel	1
26	296167	Capscrew	2
27	1350282	Retainer	4

FOOTNOTES:

- a** 717 mm Battery Compartment
- b** 861 mm Battery Compartment
- c** Not Illustrated
- d** ⇒ D/B 11/2000
- e** D/B 11/2000 ⇒
- f** D/B 11/2000⇔D/B 11/2002
- g** D/B 11/2002 ⇒

OVERHEAD GUARD (Figure 1-5) (⇒S/N A216A-2428)

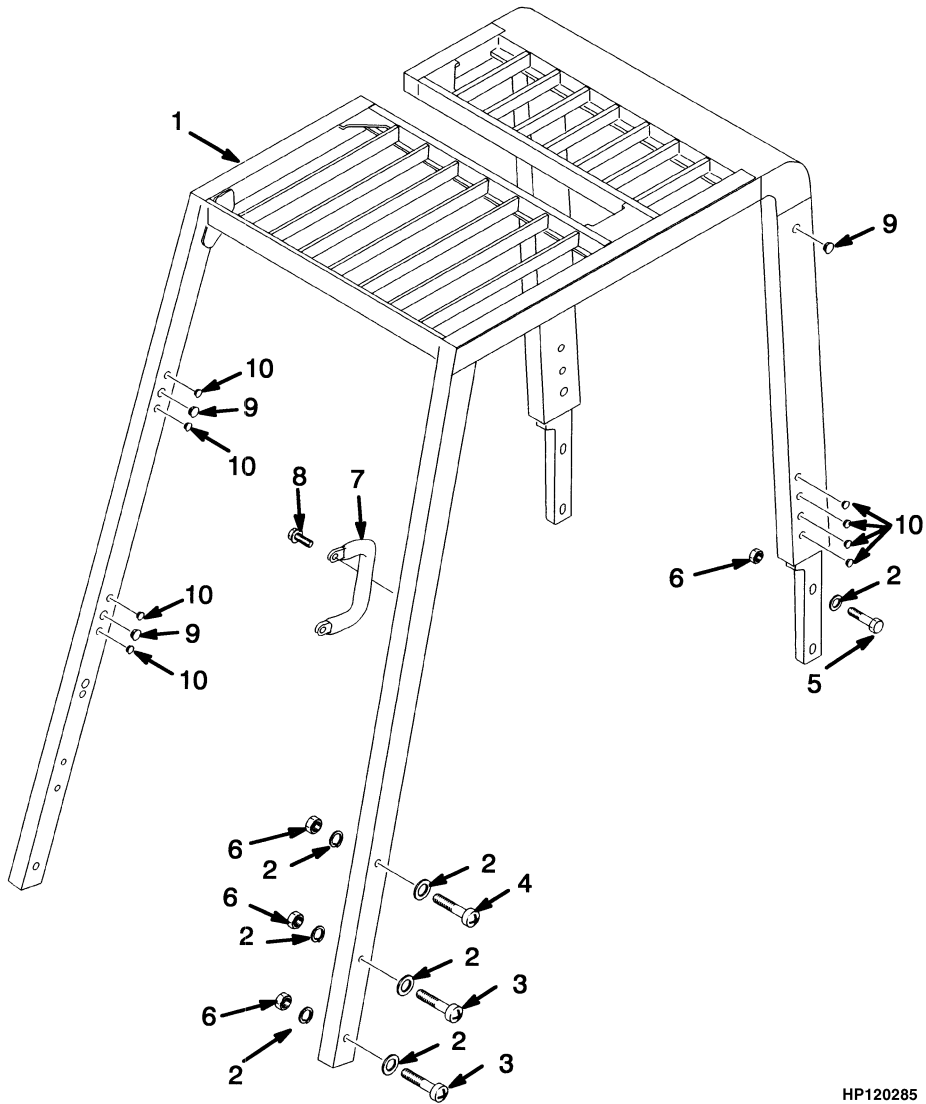


HP120284

OVERHEAD GUARD
(⇒S/N A216A-2428)**KEY:****A: 717 mm Battery Compartment****B: 861 mm Battery Compartment**

ITEM	PART NO.	DESCRIPTION	QTY	
			A	B
1	1364404	Overhead Guard	1	..
1	1364405	Overhead Guard	1
2	320161	Washer	10	10
3	292683	Lockwasher.....	6	6
4	293649	Capscrew.....	4	4
5	293647	Capscrew.....	6	6
6	300937	Locknut	4	4
7	1379469	Plate	2	2
8	302220	Screw.....	2	2
9	1343647	Handle	1	1
10	329067	Screw.....	2	2

OVERHEAD GUARD (Figure 1-6) (S/N A216A-2429⇒)

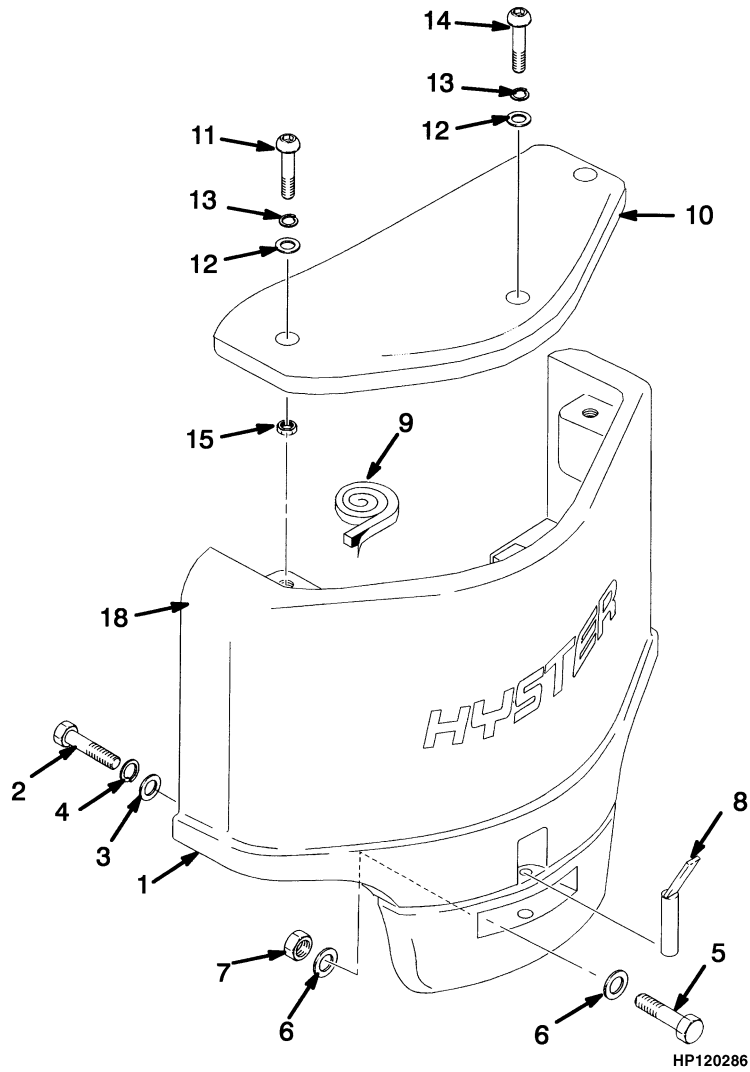


HP120285

OVERHEAD GUARD
(S/N A216A-2429⇒)**KEY:****A: 717 mm Battery Compartment****B: 861 mm Battery Compartment**

ITEM	PART NO.	DESCRIPTION	QTY	
			A	B
1	1386726	Overhead Guard	1	..
1	1386727	Overhead Guard	1
2	320161	Washer	16	16
3	1343990	Capscrew	2	2
4	1354923	Capscrew	4	4
5	293647	Capscrew	4	4
6	1390182	Nut	10	10
7	1343647	Handle	1	1
8	329067	Screw	2	2
9	1363917	Plug	5	5
10	1363916	Plug	14	14

COUNTERWEIGHT (Figure 1-7) (⇒D/B 08/1998)



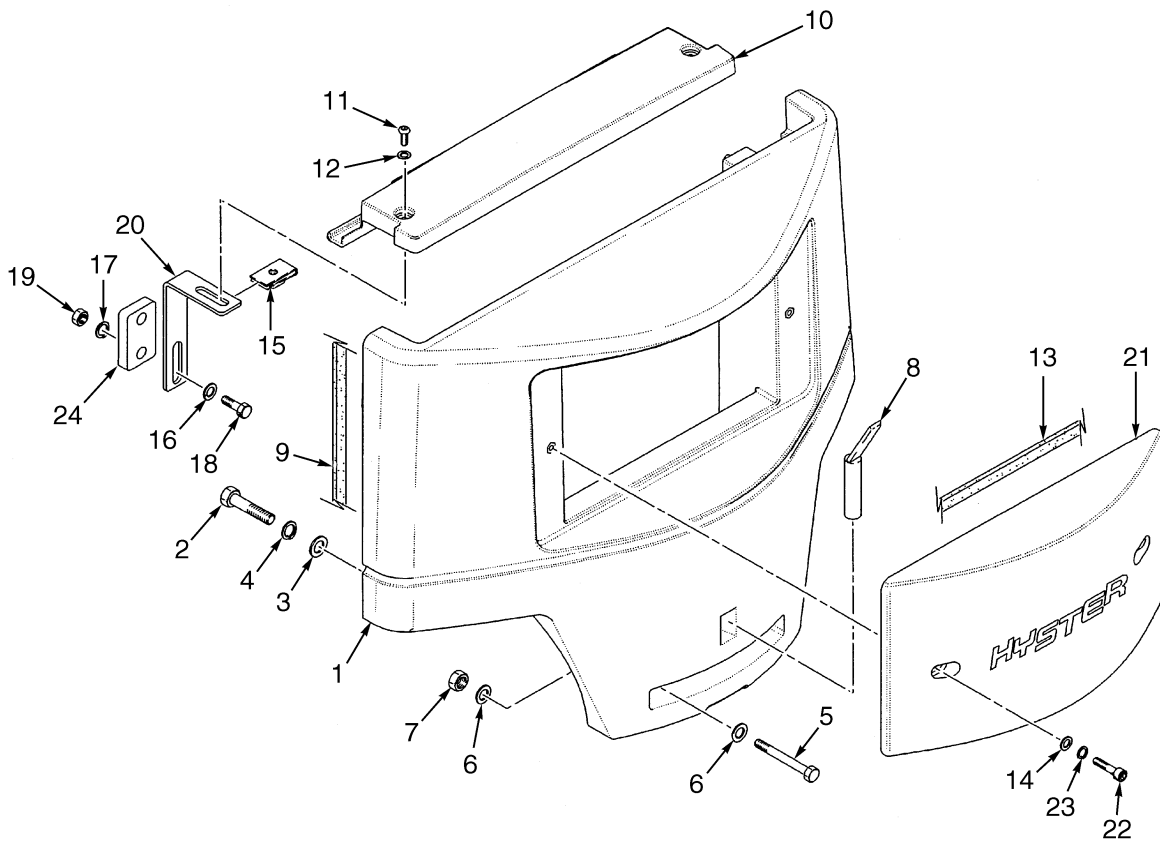
COUNTERWEIGHT
(⇒D/B 08/1998)

ITEM	PART NO.	DESCRIPTION	QTY
1	ab 1364151	Counterweight	1
1	c 1364152	Counterweight	1
2	292584	Capscrew	2
3	320169	Washer	2
4	292687	Lockwasher.....	2
5	292531	Capscrew.....	2
6	320162	Washer	4
7	300937	Locknut	2
8	326347	Tow Pin	1
9	283259	Foam Tape.....	AR
10	1364718	Cover	1
11	1364902	Capscrew.....	2
12	320160	Washer	3
13	292682	Lockwasher.....	3
14	1379470	Capscrew.....	1
15	296128	Nut	2

FOOTNOTES:

- a** J2.00XM-J2.50XM (717 mm Battery Compartment)
- b** J2.50XM-J3.00XM (861 mm Battery Compartment)
- c** J3.20XM (861 mm Battery Compartment)

COUNTERWEIGHT (Figure 1-8) (D/B 08/1998⇒)



HP120665

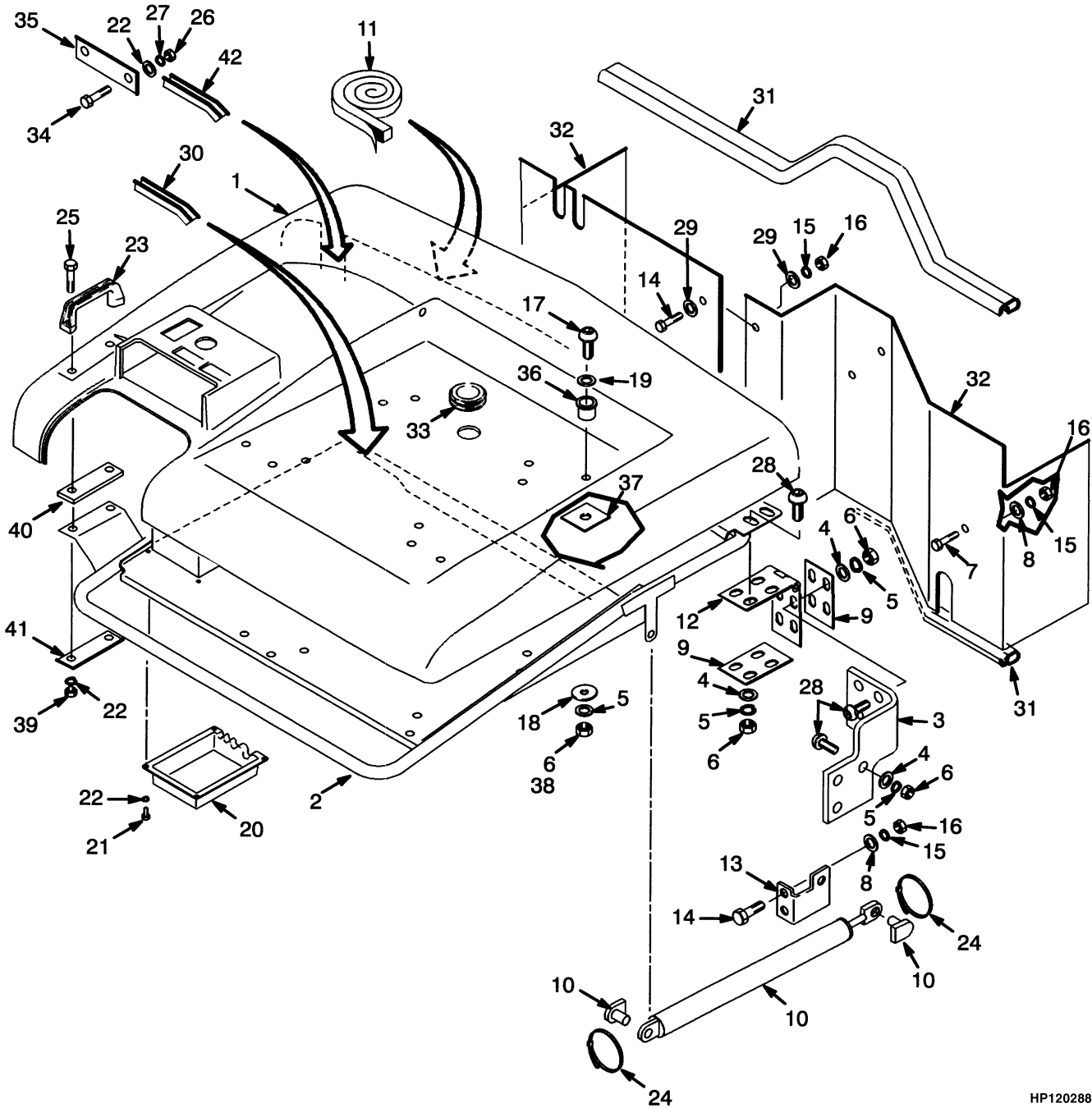
COUNTERWEIGHT
(D/B 08/1998⇒)

ITEM	PART NO.	DESCRIPTION	QTY
1	ab 1460391	Counterweight	1
1	c 1460392	Counterweight	1
2	292584	Capscrew	2
3	320169	Washer	2
4	292687	Lockwasher.....	2
5	292531	Capscrew.....	2
6	320162	Washer	4
7	300937	Locknut	2
8	326347	Tow Pin	1
9	261165	Tape	AR
10	1460535	Cover	1
11	18738	Capscrew.....	2
12	320160	Washer	2
13	326003	Tape	AR
14	15134	Washer	2
15	269200	Nut	2
16	320157	Washer	4
17	292681	Lockwasher.....	4
18	293617	Capscrew.....	4
19	239503	Nut	4
20	1461187	Bracket.....	2
21	1340460	Cover	1
22	46698	Capscrew.....	2
23	15156	Lockwasher.....	2
24	1466505	Spacer (LH)	1

FOOTNOTES:

- a** J2.00XM-J2.50XM (717 mm Battery Compartment)
- b** J2.50XM-J3.00XM (861 mm Battery Compartment)
- c** J3.20XM (861 mm Battery Compartment)

HOOD (Figure 1-9) (⇒D/B 08/1998)



HP120288

HOOD
(⇒D/B 08/1998)**KEY:****A: 717 mm Battery Compartment****B: 861 mm Battery Compartment**

ITEM	PART NO.	DESCRIPTION	QTY	
			A	B
1	d 1364629	Hood	1	..
1	d 1364630	Hood	1
1	e 1385793	Hood	1	..
1	e 1385794	Hood	1
2	a 1364472	Frame	1
2	a 1364473	Frame	1	..
2	c 1383168	Frame	1	..
2	c 1383169	Frame	1
2	e 1388358	Frame	1	..
2	e 1388359	Frame	1
3	a 1379329	Hinge (LH)	1	1
3	a 1379330	Hinge (RH).....	1	1
3	b 1383738	Plate (RH).....	1	1
3	b 1383739	Plate (LH)	1	1
4	b 320159	Washer	12	12
4	a 320159	Washer	22	22
5	b 292682	Lockwasher.....	12	12
5	a 292682	Lockwasher.....	25	25
6	b 136692	Nut	12	12
6	a 136692	Nut	25	25
7	132861	Capscrew.....	2	2
8	a 320157	Washer	6	6
8	b 320157	Washer	9	9
9	1379477	Plate	4	4
10	a 1379471	Gas Spring.....	2	2
10	b 1383718	Gas Spring.....	2	..
10	b 1383719	Gas Spring.....	..	2
11	288762	Tape.....	AR	AR
12	1364893	Hinge	2	2
13	a 1379472	Bracket.....	2	2
13	b 1383740	Bracket.....	2	2
14	136749	Capscrew.....	5	5
15	a 292681	Lockwasher.....	4	4
15	b 292681	Lockwasher.....	7	7
16	a 239503	Nut	4	4
16	b 239503	Nut	7	7
17	b 296168	Capscrew.....	3	3
17	a 296174	Capscrew.....	3	3
18	15177	Washer	3	3
19	a 296420	Washer	3	3
20	1364627	Cover	1	1
21	1367837	Screw.....	4	4
22	a 320156	Washer	4	4
22	b 320156	Washer	8	8
23	362030	Handle	1	1
24	114312	Strap Clamp (Strap).....	4	4

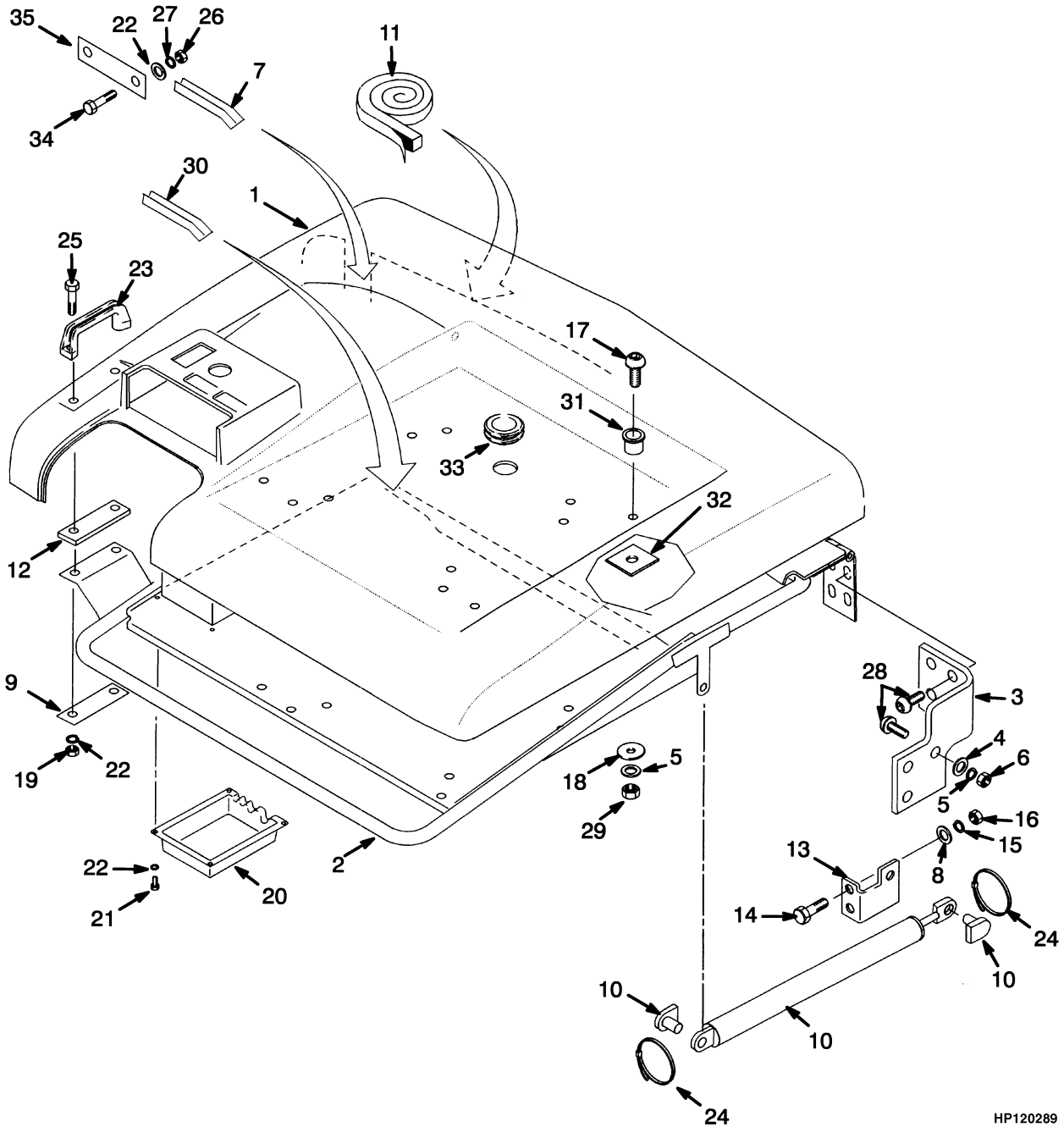
HOOD (⇒D/B 08/1998)

ITEM	PART NO.	DESCRIPTION	QTY	
			A	B
25	287816	Capscrew.....	2	2
26	136687	Nut.....	2	2
27	292680	Lockwasher.....	2	2
28	b 1380371	Bolt.....	12	12
28	a 1380371	Bolt.....	22	22
29	221733	Washer.....	4	4
30	a 1379331	Edge Trim.....	AR	AR
30	b 1383175	Edge Trim.....	AR	AR
31	300088	Seal (Door).....	AR	AR
32	878261	Plate (LH).....	1	1
32	878262	Plate (RH).....	1	1
33	1359587	Grommet.....	1	1
34	b 292501	Capscrew.....	2	..
35	b 1383755	Plate.....	1	1
36	b 1383754	Washer.....	3	3
37	b 1383680	Spacer.....	3	3
38	b 313828	Nut.....	3	3
39	b 313805	Nut.....	2	2
40	b 878240	Spacer.....	1	1
41	b 1364971	Plate.....	1	..
42	b 388752	Trim.....	AR	AR

FOOTNOTES:

- a** ⇒ S/N A216A-1857
- b** S/N A216A-1858 ⇒
- c** S/N A216A-1858⇔S/N A216A-2392
- d** ⇒ S/N A216A-2392
- e** S/N A216A-2393 ⇒

HOOD (Figure 1-10) (D/B 08/1998⇒)



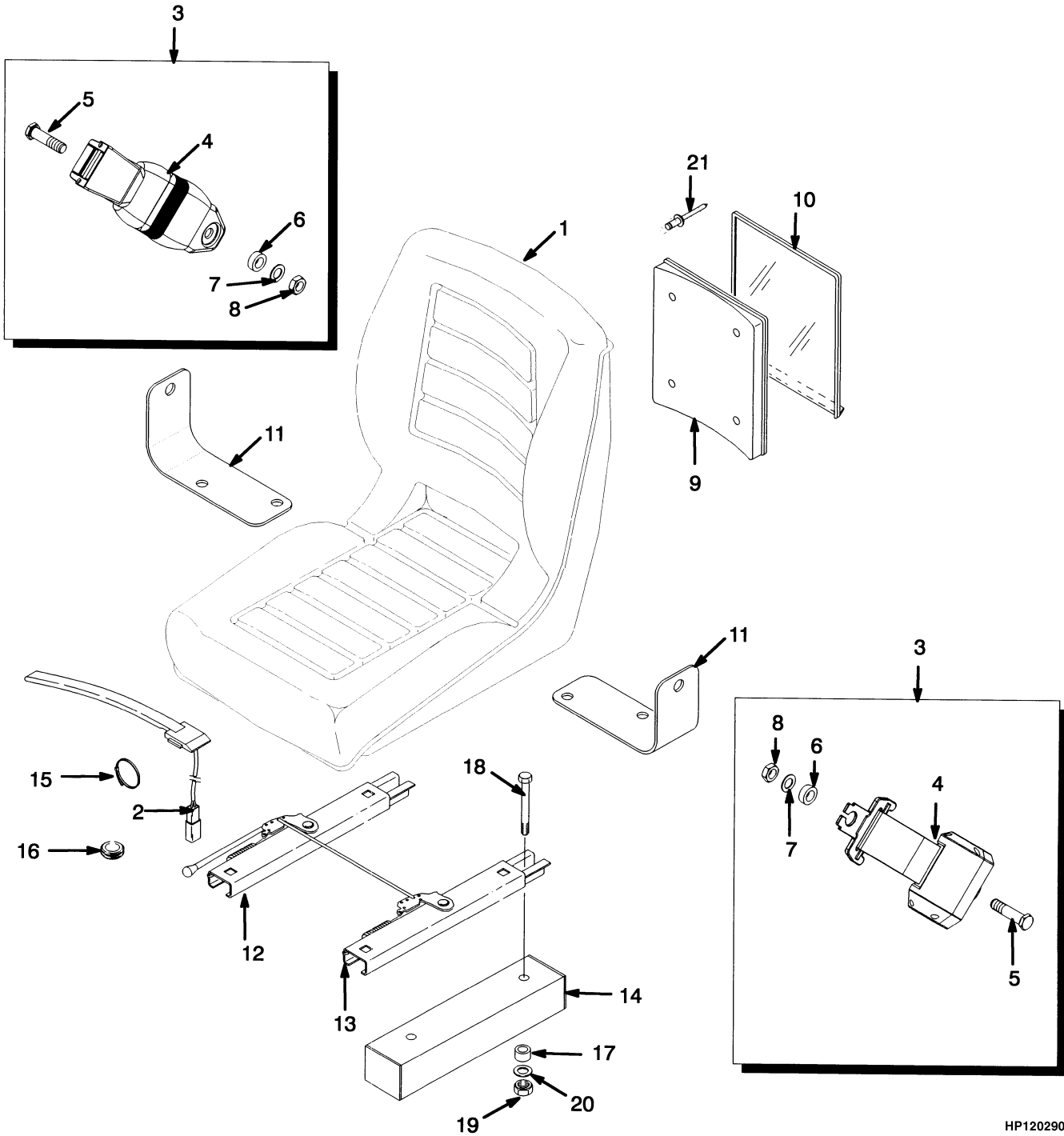
HP120289

HOOD
(D/B 08/1998⇒)**KEY:****A: 717 mm Battery Compartment****B: 861 mm Battery Compartment**

ITEM	PART NO.	DESCRIPTION	QTY	
			A	B
1	a 1385793	Hood	1	..
1	b 1486243	Hood	1	..
1	a 1385794	Hood	1
1	b 1486244	Hood	1
2	1388358	Frame	1	..
2	1388359	Frame	1
3	1383738	Plate (RH).....	1	1
3	1383739	Plate (LH)	1	1
4	320159	Washer	12	12
5	292682	Lockwasher.....	12	12
6	136692	Nut	12	12
7	388752	Trim	AR	AR
8	320157	Washer	7	7
9	1364971	Plate	1	1
10	1383718	Gas Spring.....	2	..
10	1383719	Gas Spring.....	..	2
11	288762	Tape	AR	AR
12	878240	Spacer	1	1
13	1383740	Bracket.....	2	2
14	136749	Capscrew.....	4	4
15	292681	Lockwasher.....	4	4
16	239503	Nut	4	4
17	296168	Capscrew.....	3	3
18	15177	Washer	3	3
19	313805	Nut	2	2
20	1364627	Cover	1	1
21	1367837	Screw.....	4	4
22	320156	Washer	8	8
23	362030	Handle	1	1
24	114312	Strap Clamp (Strap).....	4	4
25	287816	Capscrew.....	2	2
26	136687	Nut	2	2
27	292680	Lockwasher.....	2	2
28	1380371	Bolt	12	12
29	313828	Nut	3	3
30	1383175	Edge Trim	AR	AR
31	1383754	Washer	3	3
32	1383680	Spacer	3	3
33	1359587	Grommet.....	1	1
34	292501	Capscrew.....	2	2
35	1383755	Plate	1	1

FOOTNOTES:**a** ⇒ D/B 06/2000**b** D/B 06/2000 ⇒

NON-SUSPENSION SEAT (Figure 1-11)



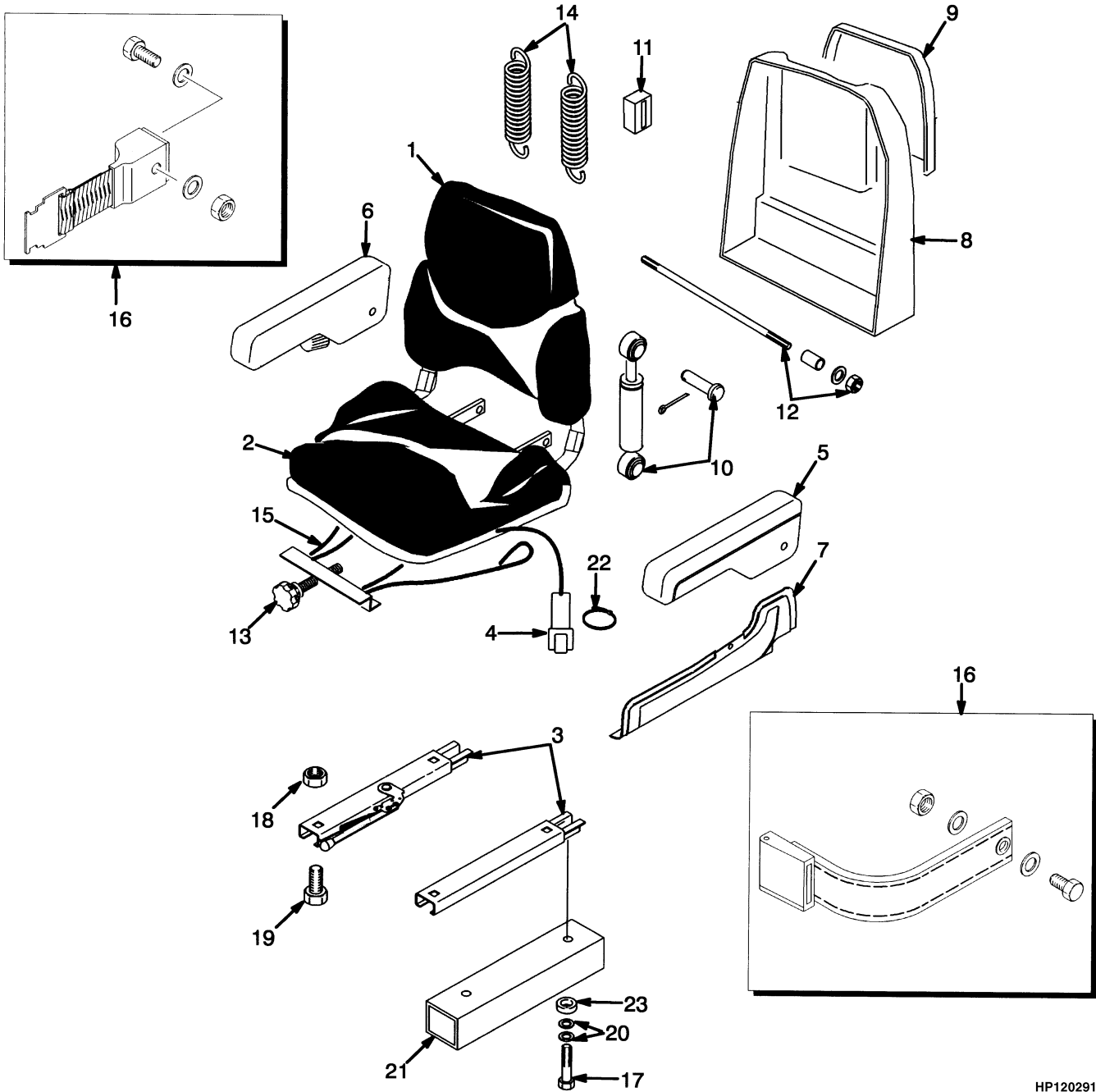
HP120290

NON-SUSPENSION SEAT

ITEM	PART NO.	DESCRIPTION	QTY
	1460231	Non-Suspension Seat.....	1
1	364911	Seat.....	1
2	2037311	Switch Assembly	1
3	1461081	Seat Belt Kit.....	1
4	Seat Belt	1
5	Screw	2
6	Washer.....	2
7	Washer.....	2
8	Nut	2
9	335988	Base (Information Case)	1
10	335991	Cover (Information Case).....	1
11	1470175	Bracket	1
12	1470176	Seat Rail.....	1
13	1470177	Seat Rail.....	1
14	1389343	Spacer	2
15	114312	Strap Clamp (Strap).....	2
16	1359587	Grommet.....	1
17	878236	Spacer	4
18	a 292512	Capscrew.....	4
18	b 18518	Capscrew.....	4
19	a 316835	Nut	4
19	b 145639	Nut	4
20	a 320158	Washer	4
20	b 15175	Washer	4
21	Rivet.....	4

FOOTNOTES:**a** ⇒ D/B 01/2000**b** D/B 01/2000 ⇒

SEMI-SUSPENSION SEAT (Figure 1-12) (⇒D/B 02/2000)

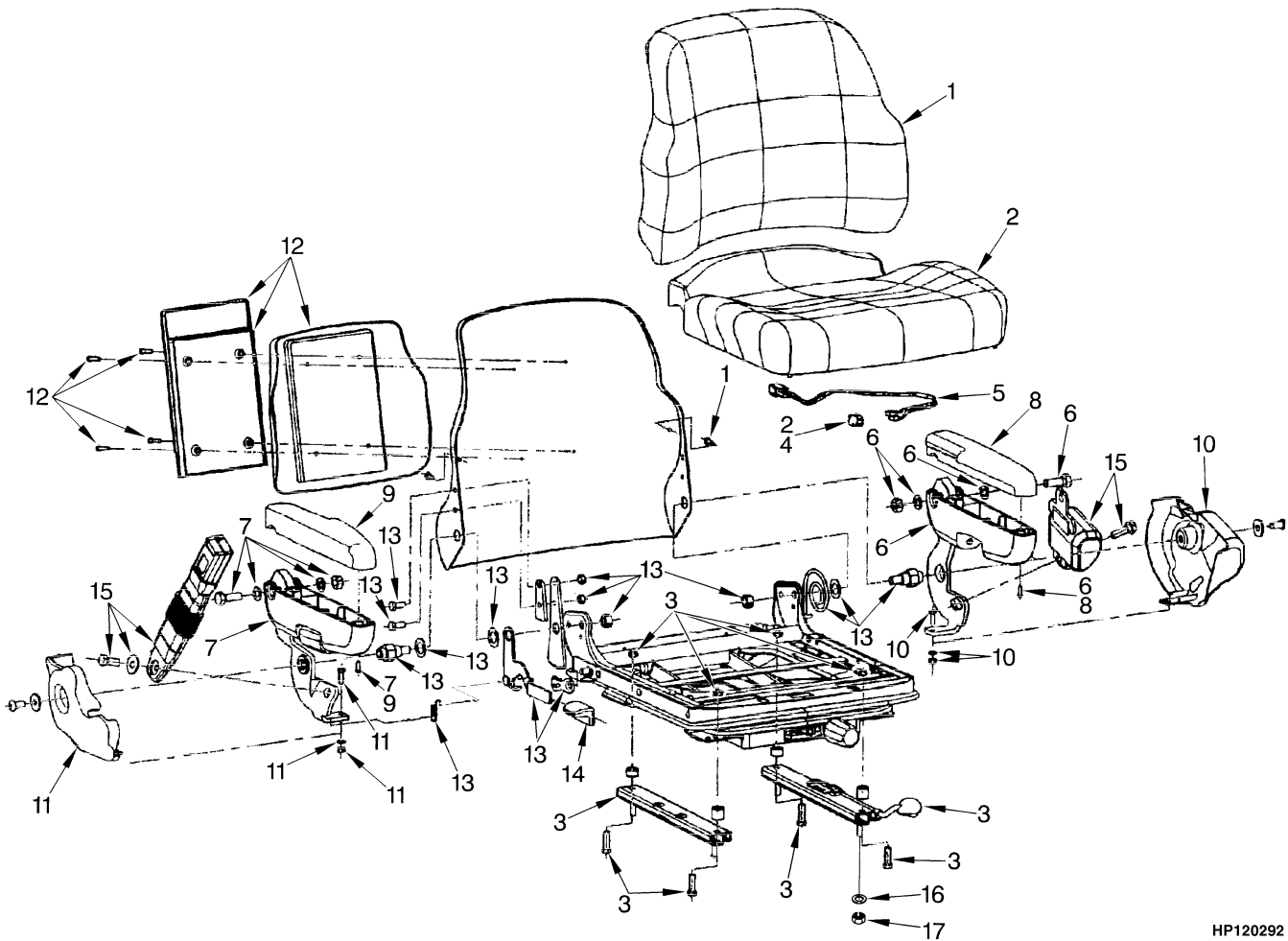


HP120291

SEMI-SUSPENSION SEAT
(⇒D/B 02/2000)**KEY:****A: Vinyl Cover****B: Fabric Cover**

ITEM	PART NO.	DESCRIPTION	QTY	
			A	B
	1450205	Seat Assembly	1	..
	1450206	Seat Assembly	1
1	1454511	Back Cushion	1	..
1	1382111	Back Cushion (Vinyl) (Optional)	1	..
1	1454513	Back Cushion	1
1	1382113	Back Cushion (Cloth) (Optional)	1
2	1454512	Seat Cushion	1	..
2	1382112	Seat Cushion (Vinyl) (Optional)	1	..
2	1454514	Seat Cushion	1
2	1382114	Seat Cushion (Cloth) (Optional)	1
3	1459112	Slide Rail Kit	1	1
4	1354140	Switch Assembly	1	1
5	1453882	Armrest (LH) (LH)	1	1
6	1453883	Armrest (RH) (RH)	1	1
7	1453884	Cover (LH)	1	1
7	1453885	Cover (RH)	1	1
8	1453886	Cover (Back)	1	1
9	1453887	Holder	1	1
10	1362049	Shock Absorber Kit	1	1
11	1362052	Block	1	1
12	1362053	Shaft and Bearing Kit	1	1
13	1362061	Knob Kit	1	1
14	1367137	Suspension Spring Kit	1	1
15	1378307	Suspension Cable Kit	1	1
16	1461081	Seat Belt Kit	1	1
16	Capscrew	2	2
16	Nut	2	2
16	Washer	4	4
17	18518	Capscrew	4	4
18	Nut	4	4
19	Capscrew	4	4
20	18515	Washer	8	8
21	1389343	Spacer	2	2
22	114312	Strap Clamp (Strap)	2	2
23	878236	Spacer	4	4

FULL SUSPENSION SEAT (Figure 1-13) FIRST SHEET (D/B 02/2000⇒)

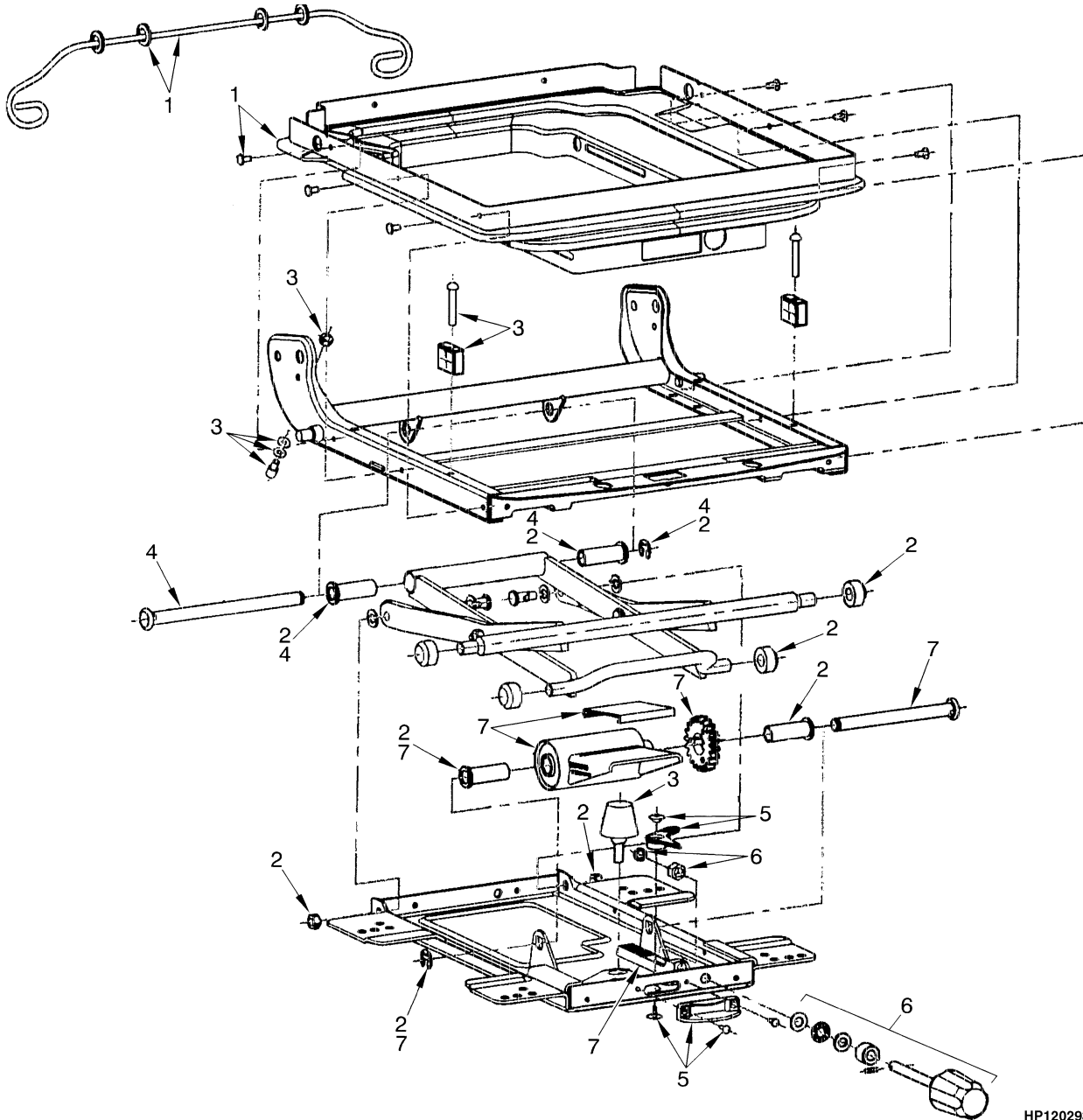


HP120292

**FULL SUSPENSION SEAT
FIRST SHEET
(D/B 02/2000⇒)**

ITEM	PART NO.	DESCRIPTION	QTY
	1466006	Full Suspension Seat (Vinyl Cover)	1
	1466007	Full Suspension Seat (Fabric Cover)	1
1	1467533	Back Cushion (Vinyl)	1
1	1467535	Back Cushion (Fabric)	1
2	1467534	Seat Cushion (Vinyl)	1
2	1467536	Seat Cushion (Fabric)	1
3	1467513	Slider Kit	1
4	1467514	Switch	1
5	1467515	Wire Harness	1
6	1467516	Armrest (LH) (LH)	1
7	1467517	Armrest (RH) (RH)	1
8	1467518	Cap (LH)	1
9	1467519	Cap (RH)	1
10	1467520	Cover (LH)	1
11	1467521	Cover (RH)	1
12	1467522	Holder Kit	1
13	1467530	Recliner Kit	1
14	1467531	Recliner Knob	1
15	1467532	Seat Belt Kit	1
16	15175	Washer	4
17	145639	Nut	4

FULL SUSPENSION SEAT (Figure 1-14) SECOND SHEET (D/B 02/2000⇒)



HP120293

**FULL SUSPENSION SEAT
SECOND SHEET
(D/B 02/2000⇒)**

ITEM	PART NO.	DESCRIPTION	QTY
	1466006	Full Suspension Seat (Vinyl Cover)	1
	1466007	Full Suspension Seat (Fabric Cover)	1
1	1467523	Boot Kit.....	1
2	1467524	Roller and Bearing Kit	1
3	1467525	Bumper and Stop Kit	1
4	1467526	Bearing Shaft Kit	1
5	1467527	Weight Adjuster Indicator Kit	1
6	1467528	Knob Kit.....	1
7	1467529	Suspension Spring Kit.....	1

BUY NOW

**Then Instant Download
the Complete Manual
Thank you very much!**