

PARTS MANUAL

REACHSTACKER

**RS45-27IH, -30CH RS46-30IH,
-33CH, -33IH, -36CH
(A222)**

CUSTOMER EDITION

HYSTER

SECTIONS

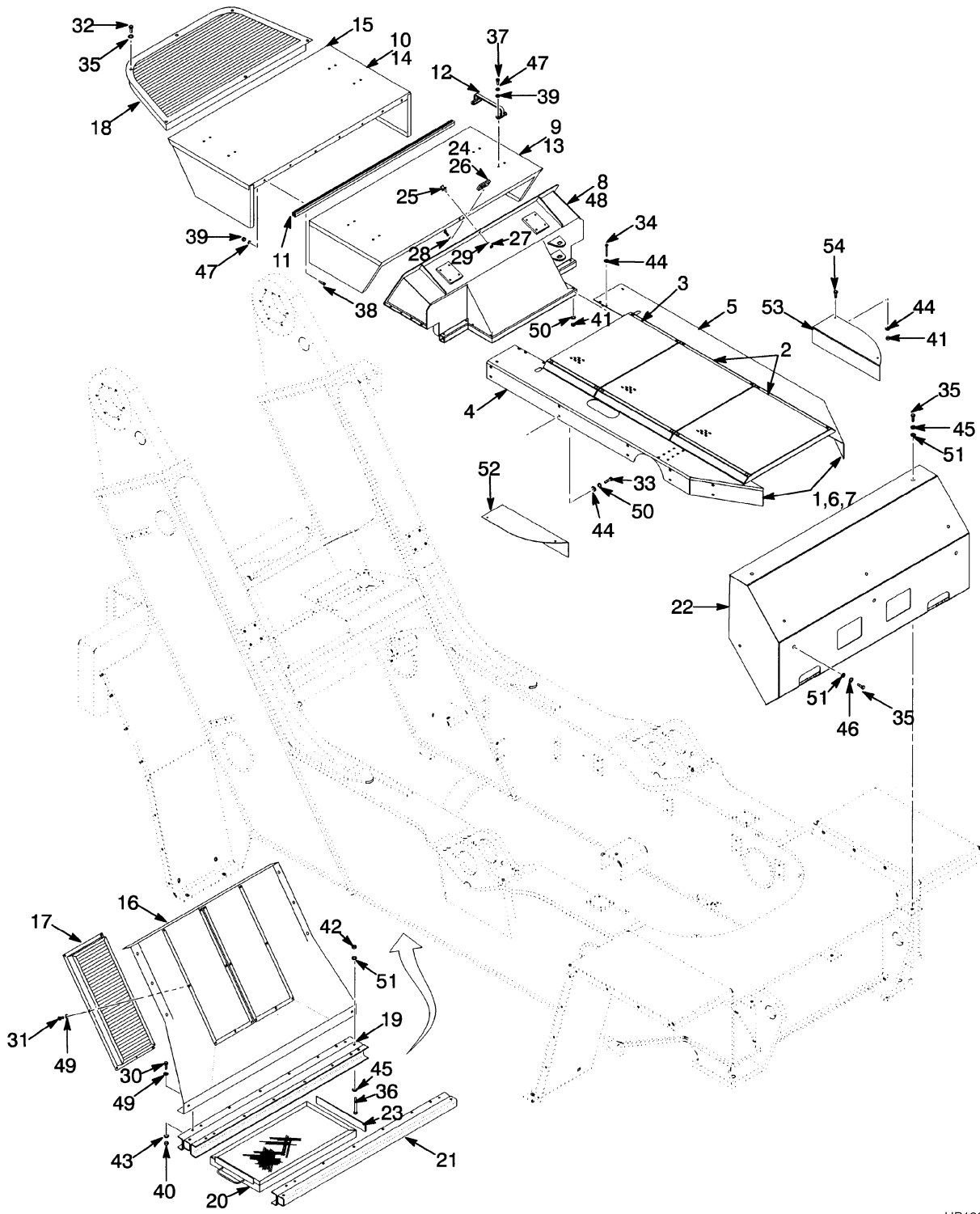
1	FRAME
2	ENGINE(S)
3	FUEL SYSTEM
4	ELECTRICAL SYSTEM
5	TRANSMISSION
6	DRIVE AXLE
7	STEERING SYSTEM
8	BRAKE SYSTEM
9	HYDRAULIC SYSTEM
10	BOOM
11	ROTATOR AND SPREADER
12	SPREADER ATTACHMENT
13	OPTIONS
14	NUMERICAL INDEX

This Parts Manual is divided into 14 major sections which are listed above. Quick reference to these sections can be made by placing the right thumb on the tab of the desired section, bending the book back and thumbing the pages to the corresponding tab.

1

FRAME

HOOD, COVERS AND SOUND DAMPENING (Figure 1-1) (⇒S/N A222E-01536X)



HP120150

HOOD, COVERS AND SOUND DAMPENING

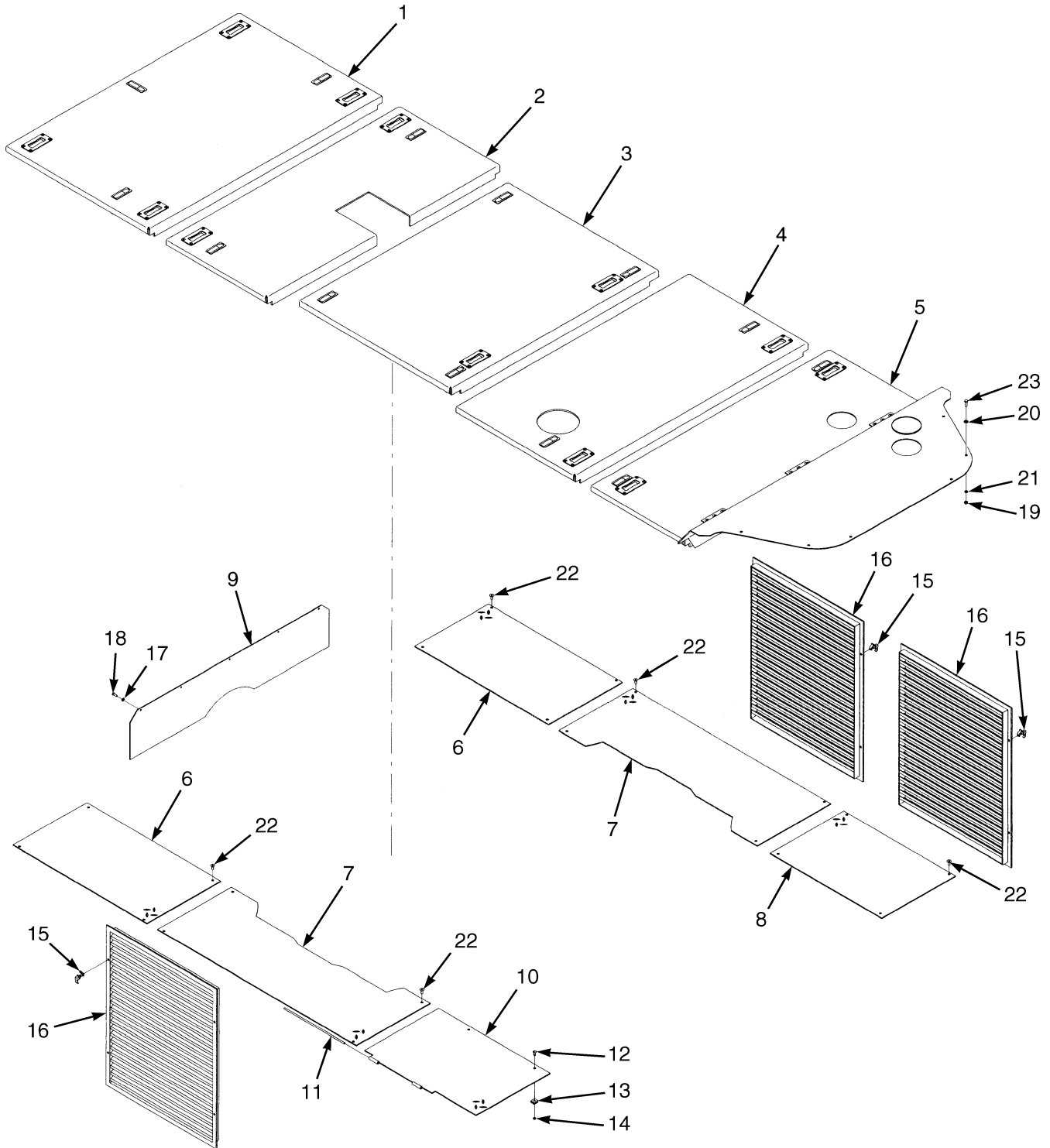
(⇒S/N A222E-01536X)

ITEM	PART NO.	DESCRIPTION	QTY
1	886740	Cover (Front).....	1
2	886741	Cover	2
3	889823	Cover	1
4	888927	Support (RH)	1
5	888926	Support (LH).....	1
6	889790	U-Nut	12
7	296247	Screw	12
8	888400	Hood (Front)	1
9	889791	Hood (Intermediate).....	1
10	889792	Hood (Rear)	1
11	885803	Hinge	1
12	886777	Handle	4
13	886782	Seal	2
14	888415	Seal	2
15	888416	Seal	1
16	889780	Support (Rear).....	1
17	885781	Support (Rear).....	2
18	885785	Support (Rear).....	1
19	885798	Support	1
20	889782	Cover (Lower)	2
21	885836	Support (Lower).....	1
22	1478659	Cover (Front).....	1
23	885977	Seal	1
24	888405	Latch	1
25	889781	Bolt	1
26	16378	Capscrew.....	4
27	15056	Nut	1
28	15154	Lockwasher.....	4
29	15156	Lockwasher.....	1
30	292501	Capscrew.....	30
31	287851	Capscrew.....	22
32	136681	Capscrew.....	50
33	292513	Capscrew.....	20
34	292521	Capscrew.....	8
35	292527	Capscrew.....	8
36	292537	Capscrew.....	8
37	296196	Capscrew.....	16
38	292672	Capscrew.....	14
39	292667	Nut	30
40	239503	Nut	2
41	136692	Nut	20
42	216877	Nut	8
43	320157	Washer	2
44	320159	Washer	48
45	320161	Washer	13
46	320162	Washer	3
47	292678	Lockwasher.....	30
48	292680	Lockwasher.....	30
49	292681	Lockwasher.....	72
50	292682	Lockwasher.....	36
51	292683	Lockwasher.....	16

HOOD, COVERS AND SOUND DAMPENING (⇒S/N A222E-01536X)

ITEM	PART NO.	DESCRIPTION	QTY
52	888146	Cover (RH).....	1
53	886442	Cover (LH).....	1
54	292514	Capscrew.....	4

HOOD AND COVERS (Figure 1-2) TIER I ENGINE (S/N A222E-01537X↔S/N A222E-01562Z INC. 1564-1565)

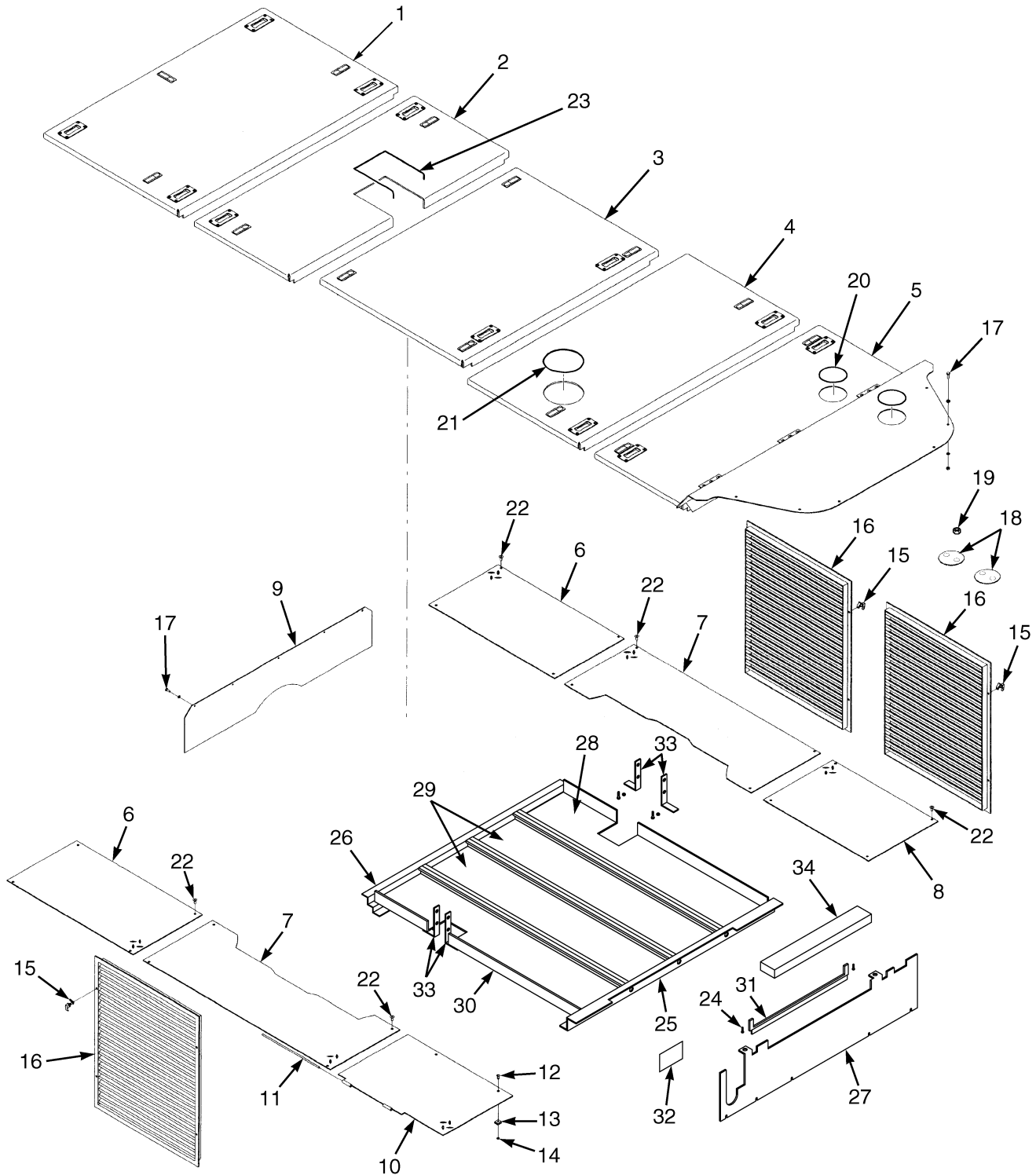


HP120661

HOOD AND COVERS
TIER I ENGINE
(S/N A222E-01537X⇔S/N A222E-01562Z INC. 1564-1565)

ITEM	PART NO.	DESCRIPTION	QTY
1	1475436	Cover (Front).....	1
2	1475437	Cover (Intermediate).....	1
3	1475438	Cover (Intermediate).....	1
4	1475439	Cover (Intermediate).....	1
5	1475440	Cover (Rear).....	1
6	889566	Cover.....	2
7	889565	Cover.....	2
8	889628	Cover.....	1
9	1486602	Plate.....	1
10	889564	Cover.....	1
11	889581	Rod.....	1
12	889626	Stud.....	2
13	887221	Receptacle.....	2
14	887220	Retainer.....	2
15	320048	Latch.....	12
16	1484416	Grille.....	3
17	292680	Lockwasher.....	5
18	292501	Capscrew.....	5
19	239503	Nut.....	6
20	320157	Washer.....	6
21	292681	Lockwasher.....	6
22	296226	Capscrew.....	20
23	136749	Capscrew.....	6

HOOD AND COVERS (Figure 1-3) STANDARD CAB TIER II ENGINE (S/N A222E-01563Z → EXC. 1564-1565)



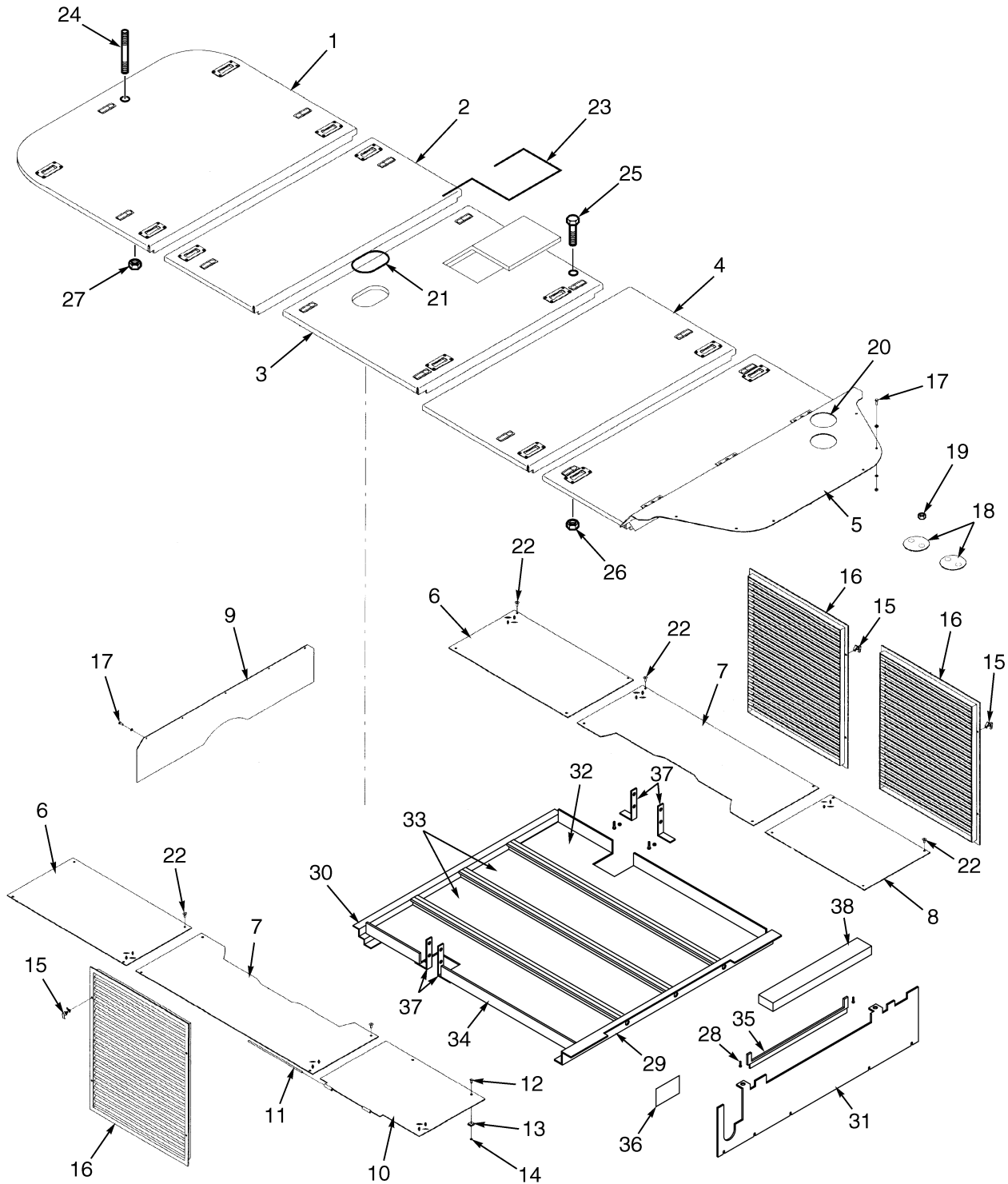
HP120457

**HOOD AND COVERS
STANDARD CAB
TIER II ENGINE
(S/N A222E-01563Z ⇒ EXC. 1564-1565)**

ITEM	PART NO.	DESCRIPTION	QTY
1	1475436	Cover (Front).....	1
2	1475437	Cover (Intermediate).....	1
3	1475438	Cover (Intermediate).....	1
4	1524634	Cover (Intermediate).....	1
5	1524565	Cover (Rear).....	1
6	889566	Cover.....	2
7	889565	Cover.....	2
8	889628	Cover.....	1
9	1486602	Plate.....	1
10	889564	Cover.....	1
11	889581	Rod.....	1
12	889626	Stud.....	2
13	887221	Receptacle.....	2
14	887220	Retainer.....	2
15	320048	Latch.....	12
16	1484416	Grille.....	3
17	1527880	Capscrew.....	11
18	1510616	Plate.....	4
19	1460477	Nut (Flange).....	8
20	1529136	Trim.....	1
21	1529137	Trim.....	1
22	296226	Capscrew.....	20
23	1529138	Trim.....	AR
24	a 1510117	Capscrew.....	15
25	a 1534932	Plate.....	1
26	a 1534931	Plate.....	1
27	a 1534924	Plate.....	1
28	a 1534926	Panel (Acoustic).....	1
29	a 1534930	Panel (Acoustic).....	2
30	a 1534928	Panel (Acoustic).....	1
31	a 1491360	Seal.....	AR
32	a 1336898	Trim.....	1
33	a 1534933	Bracket (Angle).....	4
34	a 1536670	Liner.....	1

FOOTNOTES:**a** S/N A222E-01577A ⇒

HOOD AND COVERS (Figure 1-4) SLIDING CAB TIER II ENGINE (S/N A222E-01563Z → EXC. 1564-1565)

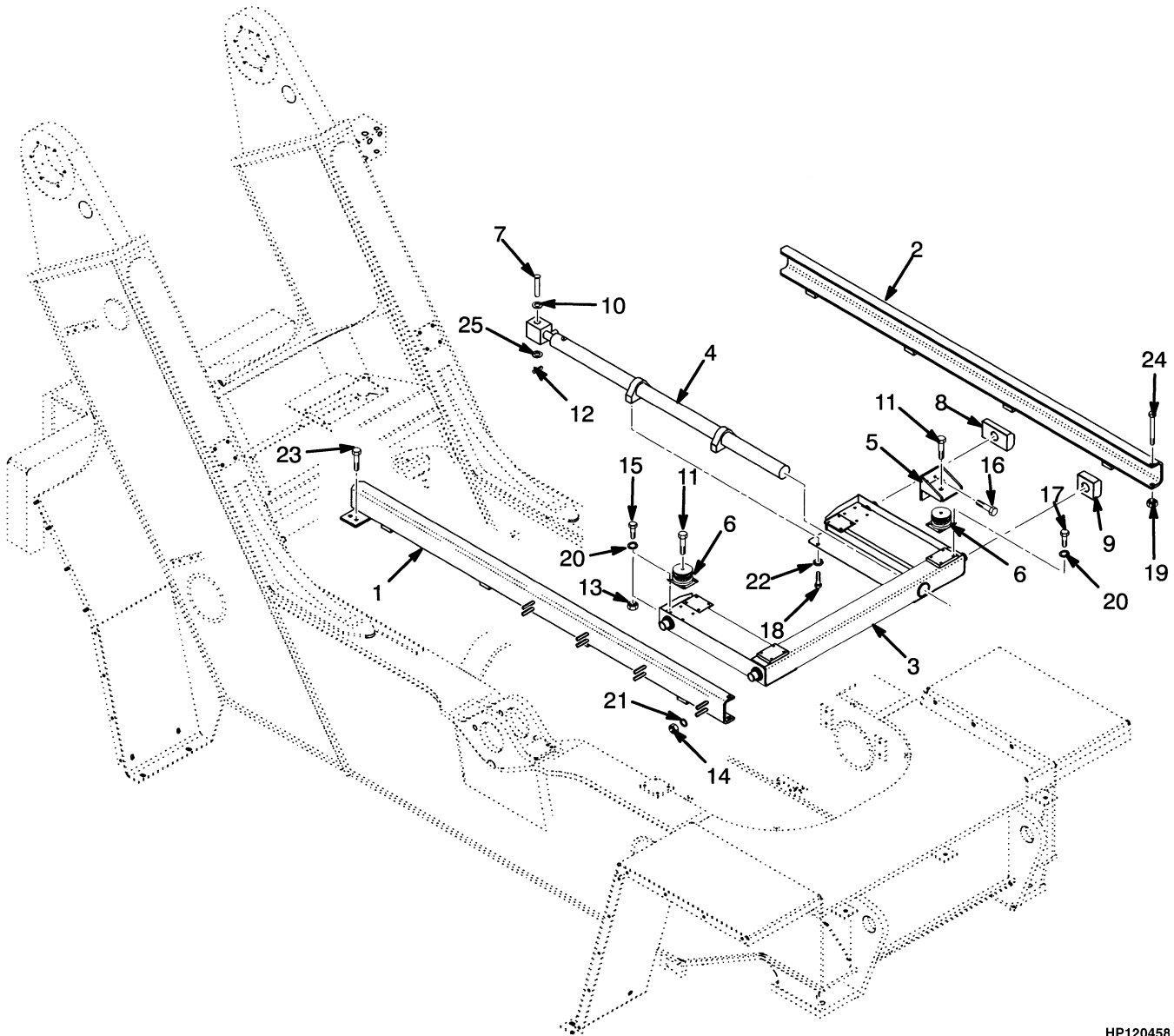


**HOOD AND COVERS
SLIDING CAB
TIER II ENGINE
(S/N A222E-01563Z ⇒ EXC. 1564-1565)**

ITEM	PART NO.	DESCRIPTION	QTY
1	1525807	Cover (Front).....	1
2	1525798	Cover (Intermediate 1).....	1
3	1525808	Cover (Intermediate 2).....	1
4	1525796	Cover (Intermediate 3).....	1
5	1524565	Cover (Rear).....	1
6	889566	Cover.....	2
7	889565	Cover.....	2
8	889628	Cover.....	1
9	1486602	Plate.....	1
10	889564	Cover.....	1
11	889581	Rod.....	1
12	889626	Stud.....	2
13	887221	Receptacle.....	2
14	887220	Retainer.....	2
15	320048	Latch.....	12
16	1484416	Grille.....	3
17	1527880	Capscrew.....	11
18	1510616	Plate.....	4
19	1460477	Nut (Flange).....	8
20	1529136	Trim.....	1
21	1529309	Trim.....	1
22	296226	Capscrew.....	20
23	1529138	Trim.....	AR
24	367251	Stop Screw.....	1
25	1510116	Capscrew.....	4
26	1502543	Nut (Flange).....	4
27	191534	Nut.....	1
28	a 1510117	Capscrew.....	15
29	a 1534932	Plate.....	1
30	a 1534931	Plate.....	1
31	a 1534924	Plate.....	1
32	a 1534926	Panel (Acoustic).....	1
33	a 1534930	Panel (Acoustic).....	2
34	a 1534928	Panel (Acoustic).....	1
35	a 1491360	Seal.....	AR
36	a 1336898	Trim.....	1
37	a 1534933	Bracket (Angle).....	4
38	a 1536670	Liner.....	1

FOOTNOTES:**a** S/N A222E-01577A ⇒

SLIDING CAB ARRANGEMENT (Figure 1-5) TIER I ENGINE (⇒S/N A222E-01562Z INC. 1564-1565)

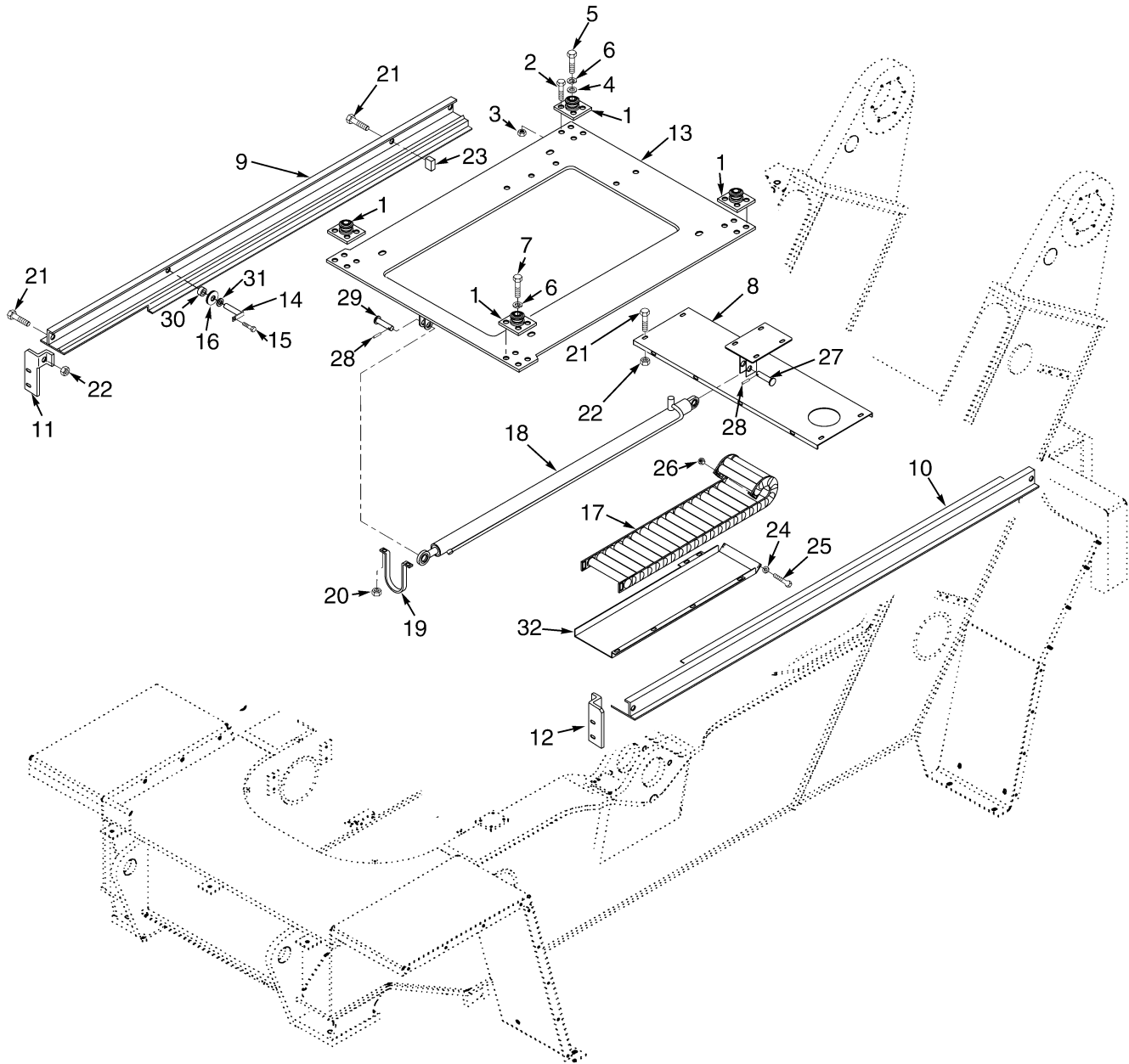


HP120458

**SLIDING CAB ARRANGEMENT
TIER I ENGINE
(⇒S/N A222E-01562Z INC. 1564-1565)**

ITEM	PART NO.	DESCRIPTION	QTY
1	889490	Guide (RH)	1
2	889491	Guide (LH)	1
3	887961	Support.....	1
4	888291	Cylinder (☞ Figure 1-10)	1
5	887974	Bracket (Cab).....	2
6	886436	Isolator.....	6
7	886425	Pin	1
8	887984	Block	2
9	887985	Block	2
10	887986	Spacer	2
11	887987	Capscrew.....	6
12	302469	Pin	1
13	136692	Nut	24
14	216877	Nut	16
15	287854	Capscrew.....	16
16	287860	Capscrew.....	8
17	292514	Capscrew.....	8
18	292560	Capscrew.....	4
19	292600	Nut	2
20	292682	Lockwasher.....	32
21	292683	Lockwasher.....	20
22	292685	Lockwasher.....	10
23	293647	Capscrew.....	4
24	293700	Capscrew.....	2
25	296440	Washer	1

SLIDING CAB ARRANGEMENT (Figure 1-6) TIER II ENGINE (S/N A222E-01563Z → EXC. 1564-1565)

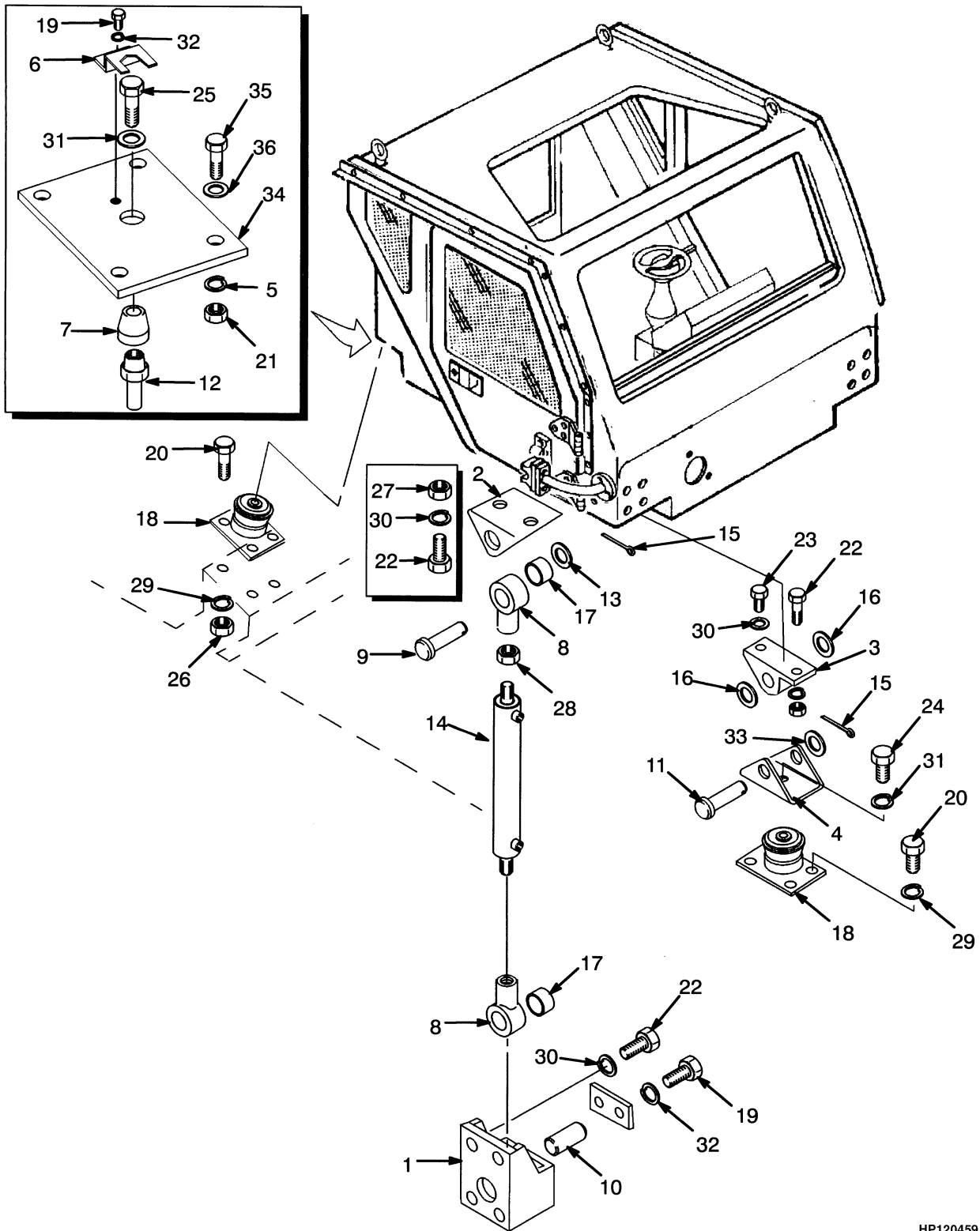


HP120631

**SLIDING CAB ARRANGEMENT
TIER II ENGINE
(S/N A222E-01563Z⇒ EXC. 1564-1565)**

ITEM	PART NO.	DESCRIPTION	QTY
1	886436	Isolator.....	4
2	1510117	Capscrew.....	16
3	1460477	Nut (Flange).....	22
4	885189	Washer	2
5	1528910	Capscrew.....	2
6	292685	Lockwasher.....	4
7	887987	Capscrew.....	2
8	1524936	Crossmember	1
9	1524485	Guide (RH)	1
10	1524486	Guide (LH)	1
11	1524610	Bracket (RH)	1
12	1524611	Bracket (LH).....	1
13	1525258	Subframe	1
14	1526212	Pin	4
15	287817	Capscrew.....	4
16	1525262	Wheel (V-Grooved).....	4
17	1524940	Chain	1
18	1524443	Sliding Cylinder (☞ Figure 1-11)	1
19	1526067	Clamp	1
20	1502543	Nut (Flange).....	2
21	1528889	Capscrew.....	15
22	1528888	Nut	6
23	1527405	Block	1
24	320156	Washer	8
25	292501	Capscrew.....	8
26	136687	Nut	8
27	1525521	Pin	1
28	15245	Cotter Pin.....	2
29	1526032	Pin	1
30	1527124	Spacer	4
31	1527127	Spacer	4
32	1525263	Guide (Chain)	1

CAB TILT (Figure 1-7) RS45-30CH, RS45-27IH (⇒S/N A222E-01562Z INC. 1564-1565)

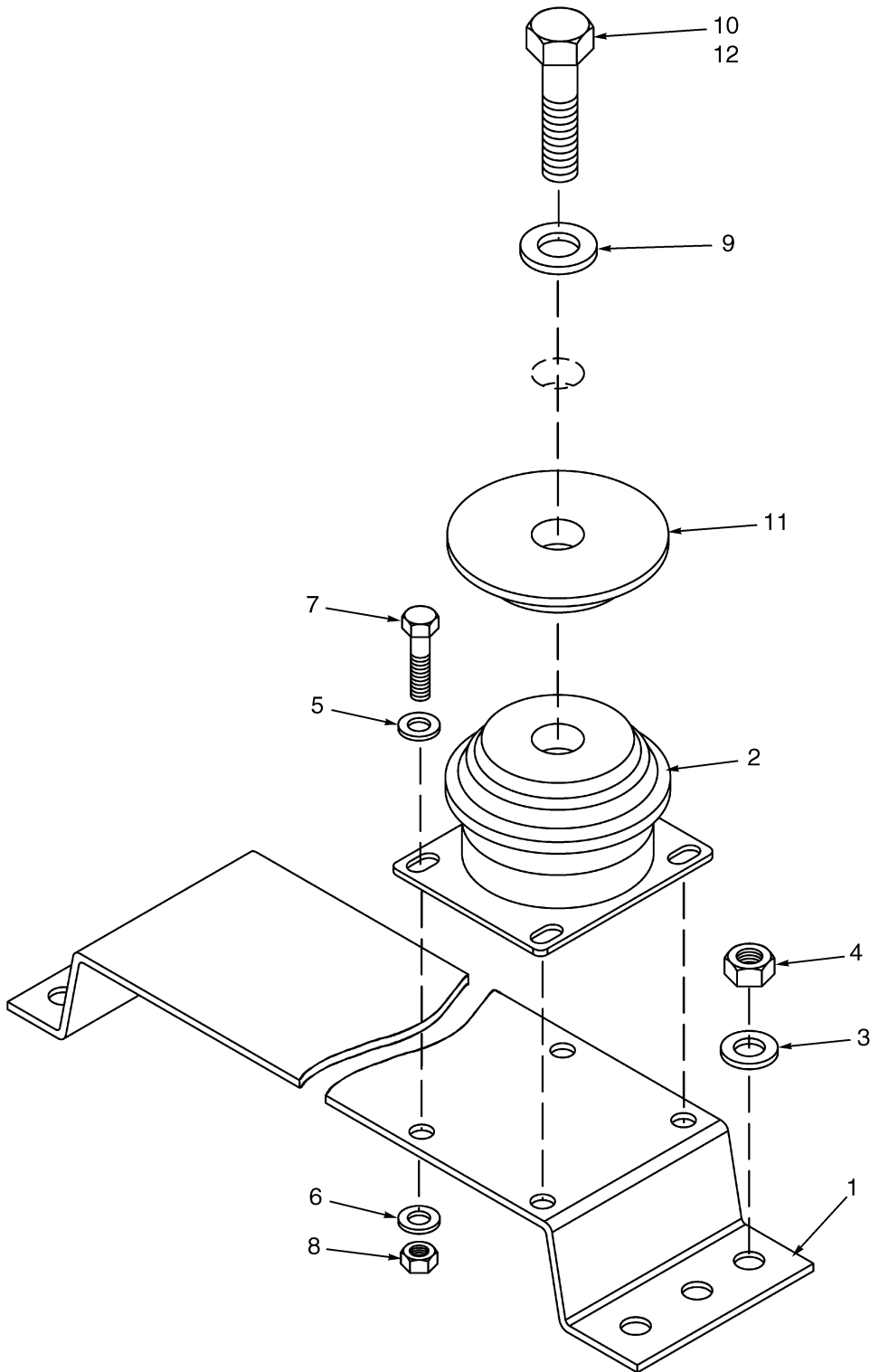


HP120459

CAB TILT
RS45-30CH, RS45-27IH
(⇒S/N A222E-01562Z INC. 1564-1565)

ITEM	PART NO.	DESCRIPTION	QTY
1	886405	Bracket (Cylinder Mounting) (Lower)	1
2	886410	Bracket (Cylinder Mounting) (Upper)	1
3	886415	Block	2
4	886416	Bracket.....	2
5	292682	Lockwasher.....	8
6	886420	Keeper	2
7	886421	Spacer	2
8	886422	Hub	2
9	886425	Pin	1
10	886426	Pin	2
11	886429	Pin	1
12	886430	Pin	2
13	886431	Spacer	1
14	Tilt Cylinder (☞ Figure 1-9)	1
15	886440	Pin	3
16	886434	Washer	4
17	886441	Bushing.....	2
18	886436	Isolator.....	4
19	287851	Capscrew.....	4
20	292513	Capscrew.....	16
21	136692	Nut.....	8
22	292527	Capscrew.....	10
23	292528	Capscrew.....	2
24	886437	Capscrew.....	2
25	292560	Capscrew.....	2
26	136692	Nut.....	8
27	216877	Nut.....	8
28	296139	Nut.....	1
29	292682	Lockwasher.....	16
30	292683	Lockwasher.....	12
31	292685	Lockwasher.....	4
32	292681	Lockwasher.....	4
33	886439	Washer	2
34	886435	Plate	2
35	292515	Capscrew.....	8
36	320159	Washer	8

OPERATOR COMPARTMENT MOUNTING (Figure 1-8) STANDARD CAB (S/N A222E-01563Z ⇒ EXC. 1564-1565)

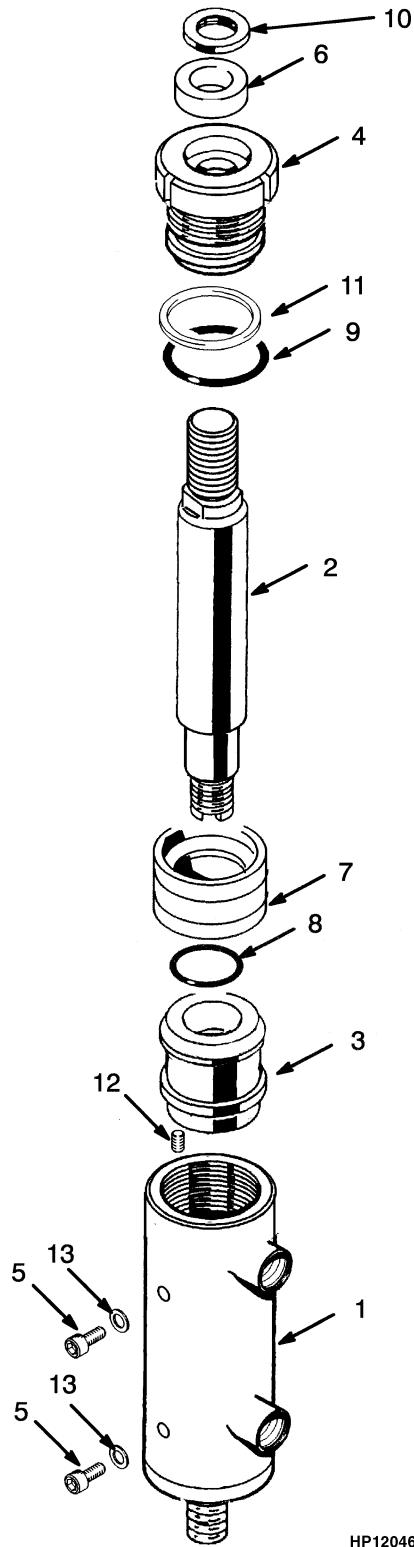


HP120667

**OPERATOR COMPARTMENT MOUNTING
STANDARD CAB
(S/N A222E-01563Z⇒ EXC. 1564-1565)**

ITEM	PART NO.	DESCRIPTION	QTY
1	1474818	Bracket.....	2
2	886436	Isolator.....	4
3	320162	Washer	12
4	302401	Locknut	12
5	320159	Washer	16
6	292682	Lockwasher.....	16
7	287860	Capscrew.....	16
8	136692	Nut	16
9	292685	Lockwasher.....	4
10	887987	Capscrew.....	2
11	885189	Washer	2
12	1528910	Capscrew.....	2

TIPPING CYLINDER (Figure 1-9) RS45-30CH, RS45-27IH (⇒S/N A222E-01562Z INC. 1564-1565)

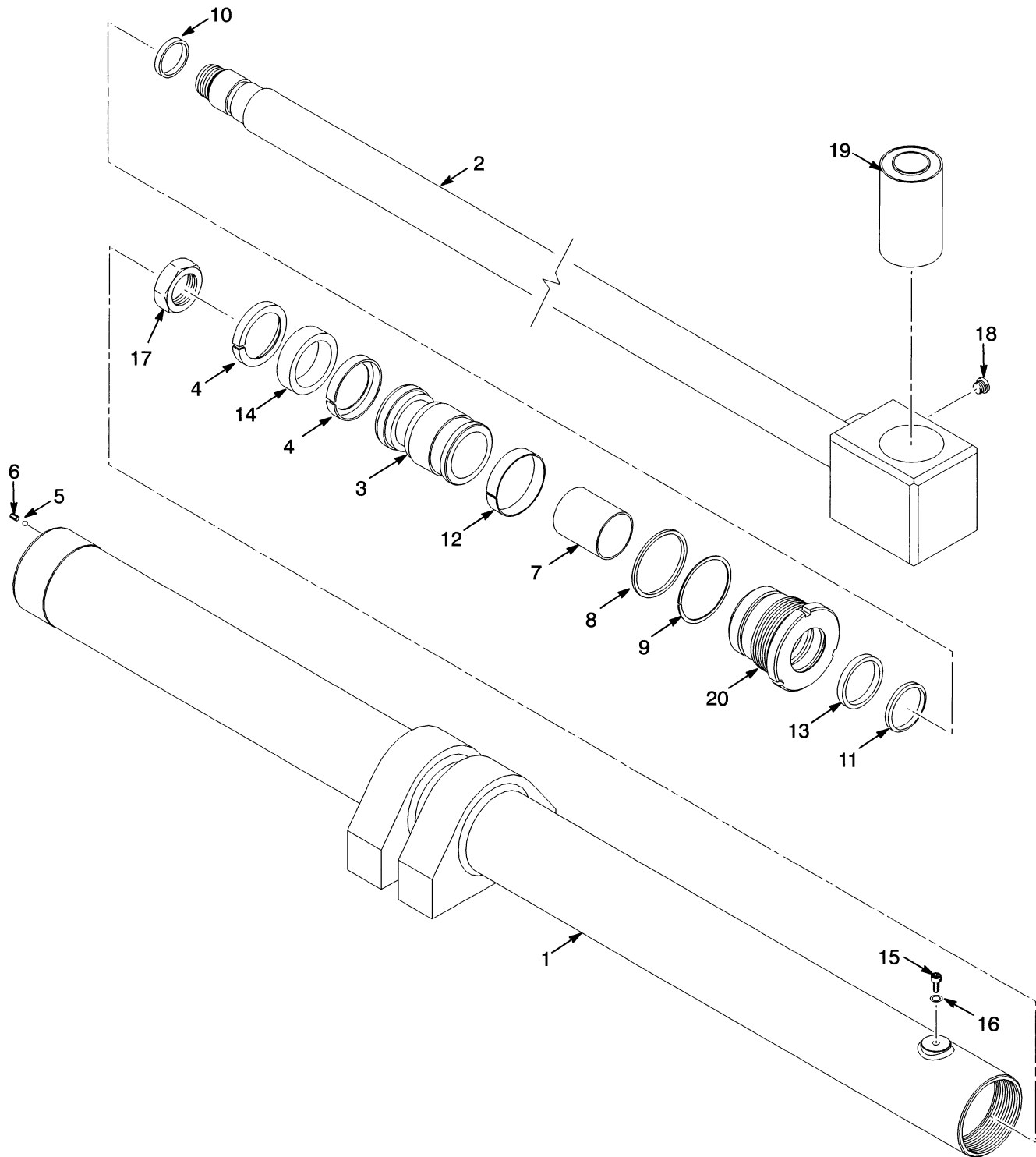


HP120460

TIPPING CYLINDER
RS45-30CH, RS45-27IH
(⇒S/N A222E-01562Z INC. 1564-1565)

ITEM	PART NO.	DESCRIPTION	QTY
	886433	Tilt Cylinder (Optional)	1
	888225	Tilt Cylinder	1
1	Tube.....	1
2	1385997	Rod.....	1
3	1385998	Piston	1
4	1385999	Nut.....	1
5	1386000	Capscrew	2
6	1386001	Seal (Rod)	1
7	1386002	Seal (Piston).....	1
8	1386003	O-Ring	1
9	1386004	O-Ring	1
10	1386005	Wiper.....	1
11	1386009	Ring.....	1
12	1386007	Screw	1
13	1386008	Seal	2

SLIDING CYLINDER (Figure 1-10) (⇒S/N A222E-01536X)



HP120461

SLIDING CYLINDER
(⇒S/N A222E-01536X)

ITEM	PART NO.	DESCRIPTION	QTY
	888291	Cylinder (Sliding)	1
1	1472753	Shell	1
2	1472758	Rod.....	1
3	1472761	Piston	1
4	1472764	Ring.....	2
5	1472765	Plunger.....	1
6	1472766	Stud.....	1
7	1472767	Ring.....	1
8	1472768	O-Ring	1
9	1472769	Ring.....	1
10	1472770	O-Ring	1
11	1472771	Ring.....	1
12	1472772	Guide Ring	1
13	1472773	Seal	1
14	1472821	Seal Kit.....	1
15	1472833	Screw	1
16	1472834	O-Ring	1
17	1472835	Nut.....	2
18	1472847	Screw	2
19	1472851	Sleeve.....	1
20	1472763	Seal Kit (Piston).....	1

BUY NOW

**Then Instant Download
the Complete Manual
Thank you very much!**