

PARTS MANUAL

**J2.00-3.20XM
(A416)**

CUSTOMER EDITION

HYSTER

SECTIONS

1	FRAME
2	ELECTRICAL SYSTEM
3	DRIVE UNIT
4	STEERING SYSTEM
5	BRAKE/ACCELERATOR SYSTEM
6	HYDRAULIC SYSTEM
7	MAST-TWO STAGE LIMITED FREE-LIFT
8	MAST-THREE STAGE FULL FREE-LIFT
9	MAST-TWO STAGE FULL FREE-LIFT
10	OPTIONS
11	NUMERICAL INDEX

This Parts Manual is divided into 11 major sections which are listed above. Quick reference to these sections can be made by placing the right thumb on the tab of the desired section, bending the book back and thumbing the pages to the corresponding tab.

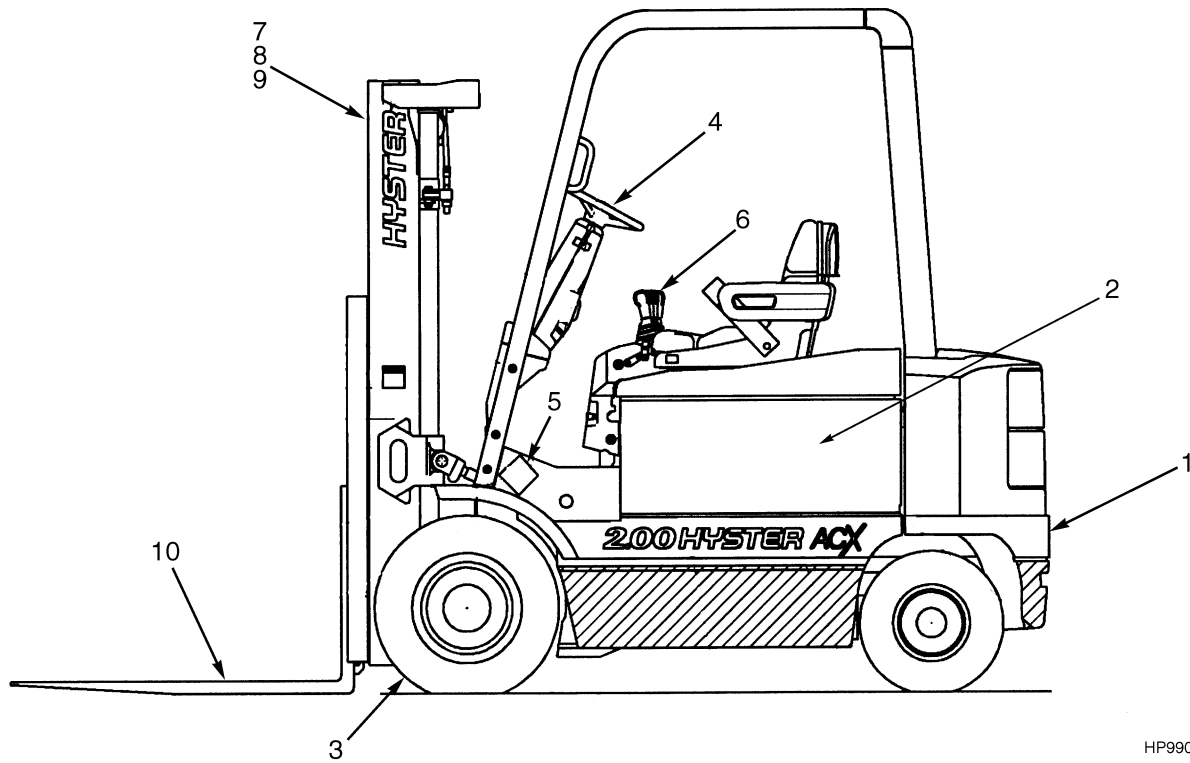
1

FRAME

**SECTION 1
FRAME**

DESCRIPTION	PAGE
COUNTERWEIGHT	1-12
COVERS	1-6
FORKS	1-22
FRAME	1-4
FULL SUSPENSION SEAT	
SHEET 1 OF 2	1-14
SHEET 2 OF 2	1-16
GENERAL TRUCK	1-2
HOOD	1-8
LABELS AND DECALS	1-18
LOAD BACKREST EXTENSION	1-20
OVERHEAD GUARD	1-10

GENERAL TRUCK (Figure 1-1)

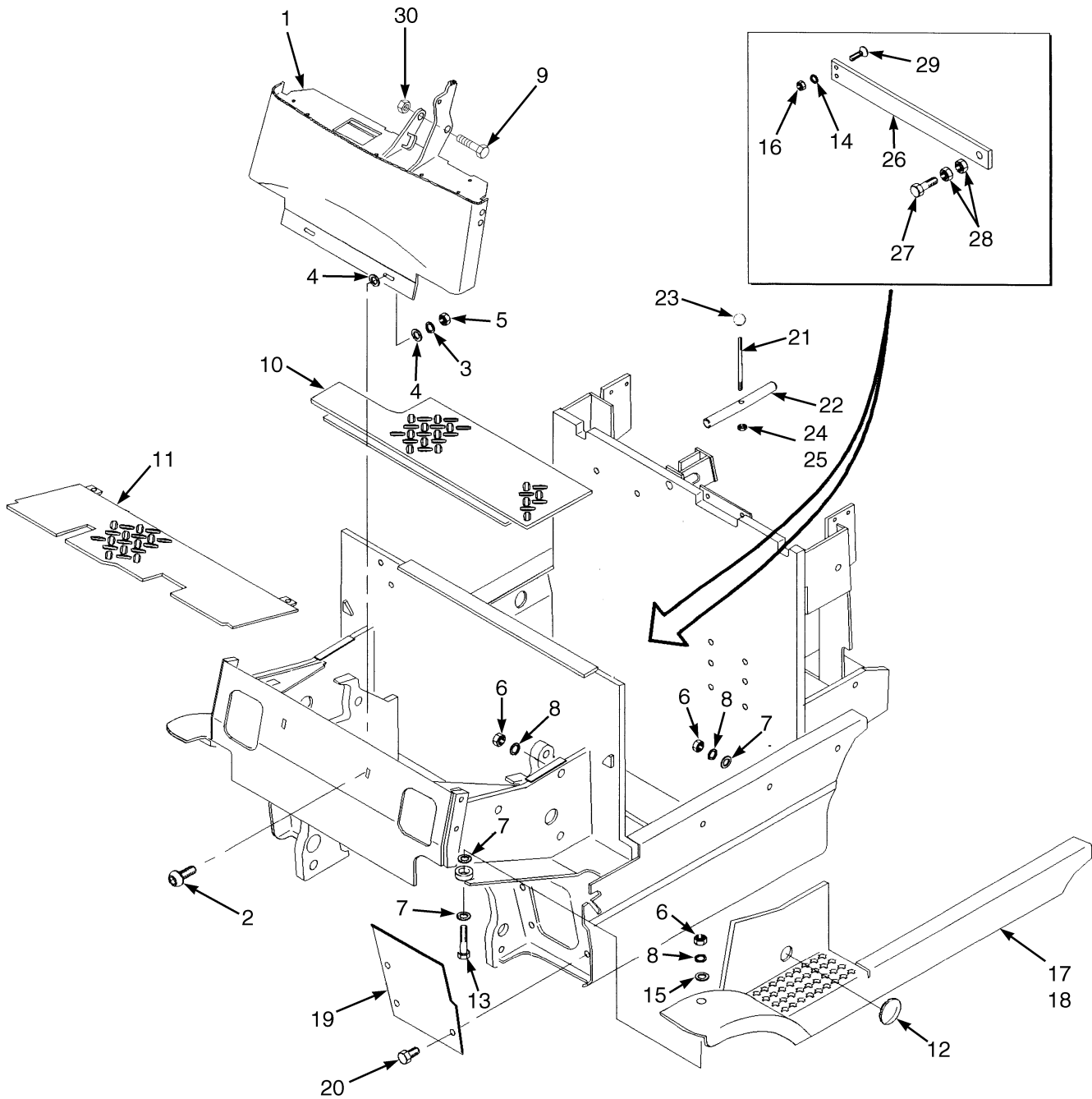


HP990018

GENERAL TRUCK

ITEM	PART NO.	DESCRIPTION	QTY
1	Frame (☞ Figure 1-2)
2	Electrical System (☞ Figure 2-1)
3	Drive Unit (☞ Figure 3-1)
4	Steering System (☞ Figure 4-1)
5	Brake and Accelerator (☞ Figure 5-1)
6	Hydraulic System (☞ Figure 6-1)
7	Mast-Two Stage Limited Free-Lift (☞ Figure 7-1)
8	Mast-Two Stage Full Free-Lift (☞ Figure 9-1)
9	Mast-Three Stage Full Free-Lift (☞ Figure 8-1)
10	Optional Equipment (☞ Figure 10-1)

FRAME (Figure 1-2)



HP120681

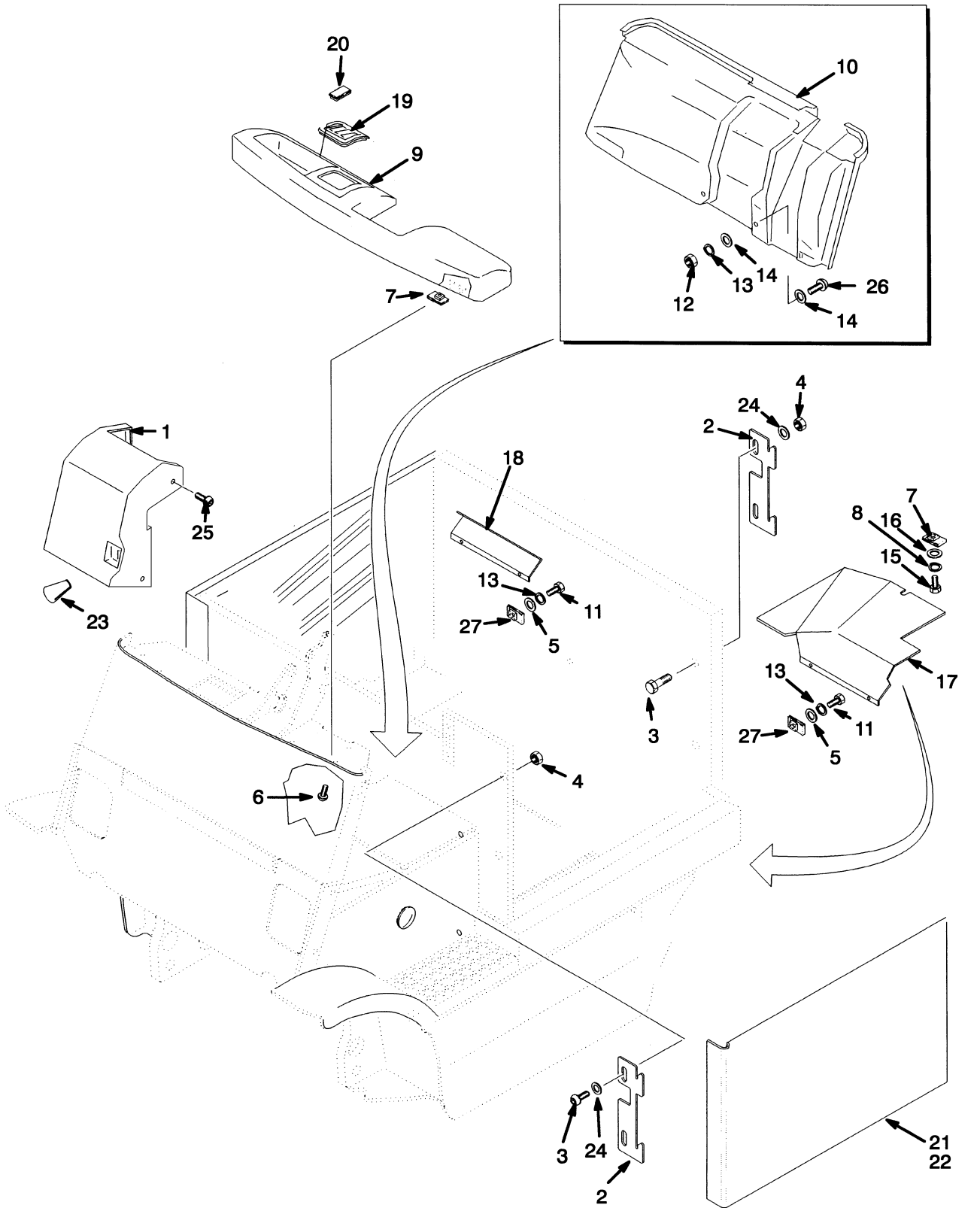
FRAME

ITEM	PART NO.	DESCRIPTION	QTY
1	1461197	Cowl.....	1
2	17105	Bolt	2
3	15156	Lockwasher.....	2
4	221767	Washer	4
5	15056	Nut	2
6	136692	Nut	12
7	320160	Washer	16
8	292682	Lockwasher.....	12
9	18494	Capscrew.....	1
10	1385122	Floorplate.....	1
10	878220	Floormat	1
11	1380562	Floorplate.....	1
12	1350231	Plug	2
13	292519	Capscrew.....	2
14	292681	Lockwasher.....	2
15	296421	Washer	2
16	239503	Nut	2
17	a 1364498	Step (717 mm Battery Compartment) (LH)	1
17	a 1364499	Step (861 mm Battery Compartment) (LH)	1
17	b 1364552	Step (717 mm Battery Compartment) (LH)	1
17	b 1364553	Step (861 mm Battery Compartment) (LH)	1
18	a 1364555	Step (717 mm Battery Compartment) (RH).....	1
18	a 1364556	Step (861 mm Battery Compartment) (RH).....	1
18	b 1364557	Step (717 mm Battery Compartment) (RH).....	1
18	b 1364558	Step (861 mm Battery Compartment) (RH).....	1
19	1378906	Plate	2
20	316678	Screw.....	6
21	1377420	Rod	1
22	1377421	Pin	1
23	1380449	Knob	1
24	296128	Nut	1
25	264134	Sealant	AR
26	1379304	Plate	1
27	1379324	Capscrew.....	1
28	296136	Nut	2
29	296227	Capscrew.....	2
30	169874	Nut	1

FOOTNOTES:

- a** Standard Tread
b Wide Tread

COVERS (Figure 1-3)

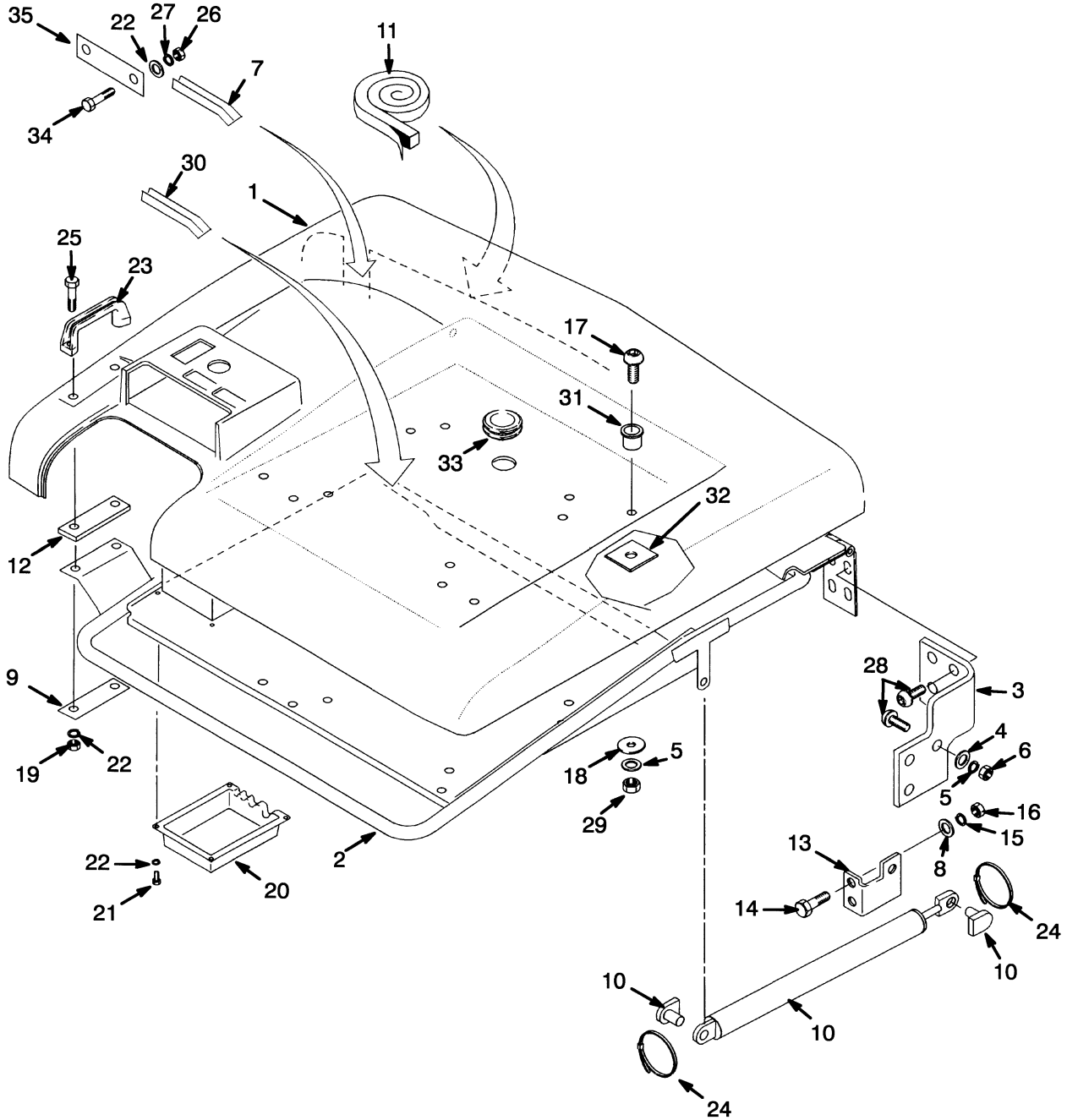


HP120680

COVERS

ITEM	PART NO.	DESCRIPTION	QTY
1	1478886	Cover	1
2	878542	Plate	4
3	136749	Capscrew.....	4
4	313828	Nut	8
5	320158	Washer	4
6	296159	Capscrew.....	12
7	325182	Nut	13
8	292680	Lockwasher.....	1
9	1461070	Dash	1
10	1461198	Liner.....	1
11	296157	Capscrew.....	12
12	239503	Nut	6
13	292681	Lockwasher.....	10
14	320157	Washer	12
15	292501	Capscrew.....	1
16	197068	Washer	1
17	1383170	Shield (LH).....	1
18	1383173	Shield (RH).....	1
19	1382311	Mounting Panel (End).....	2
19	1382312	Mounting Panel (Center).....	1
20	1382313	Mounting Panel (With Lights).....	2
20	1382313	Mounting Panel (Without Lights).....	3
21	1531125	Cover (717 mm Battery Compartment) (LH)	1
21	1531126	Cover (861 mm Battery Compartment) (LH)	1
22	1531128	Cover (717 mm Battery Compartment) (RH).....	1
22	1531129	Cover (861 mm Battery Compartment) (RH).....	1
23	1377483	Knob	1
24	296419	Washer	8
25	369242	Capscrew	6
26	296167	Capscrew.....	2
27	1350282	Retainer	4

HOOD (Figure 1-4)

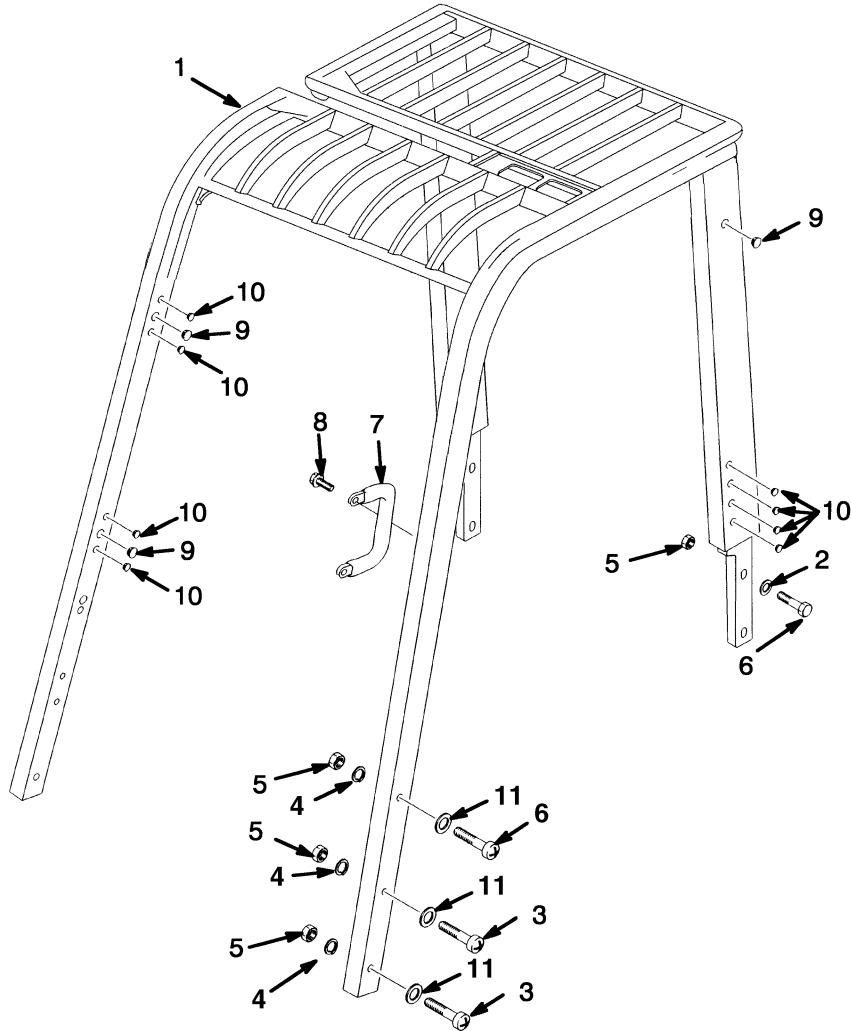


HP120060

HOOD**KEY:****A: 717 mm Battery Compartment****B: 861 mm Battery Compartment**

ITEM	PART NO.	DESCRIPTION	QTY	
			A	B
1	1486243	Hood	1	..
1	1486244	Hood	1
2	1388358	Frame	1	..
2	1388359	Frame	1
3	1383738	Plate (RH).....	1	1
3	1383739	Plate (LH)	1	1
4	320159	Washer	12	12
5	292682	Lockwasher.....	12	12
6	136692	Nut	12	12
7	388752	Trim	AR	AR
8	320157	Washer	7	7
9	1364971	Plate	1	1
9	2310622	Plate (Optional).....	1	1
10	1383718	Gas Spring.....	2	..
10	1383719	Gas Spring.....	..	2
11	288762	Tape (Foam)	AR	AR
12	878240	Spacer	1	1
13	1383740	Bracket.....	2	2
14	136749	Capscrew.....	4	4
15	292681	Lockwasher.....	4	4
16	239503	Nut	4	4
17	296168	Capscrew.....	3	3
18	15177	Washer	3	3
19	313805	Nut	2	2
20	1364627	Cover	1	1
21	1367837	Screw.....	4	4
22	320156	Washer	8	8
23	362030	Handle	1	1
24	114312	Strap Clamp.....	4	4
25	287816	Capscrew.....	2	2
26	136687	Nut	2	2
27	292680	Lockwasher.....	2	2
28	1380371	Bolt	9	9
28	1533695	Bolt (RH).....	3	3
29	313828	Nut	3	3
30	1383175	Edge Trim	AR	AR
31	1383754	Washer	3	3
32	1383680	Spacer	3	3
33	1359587	Grommet.....	1	1
34	292501	Capscrew.....	2	2
35	1383755	Plate	1	1

OVERHEAD GUARD (Figure 1-5)

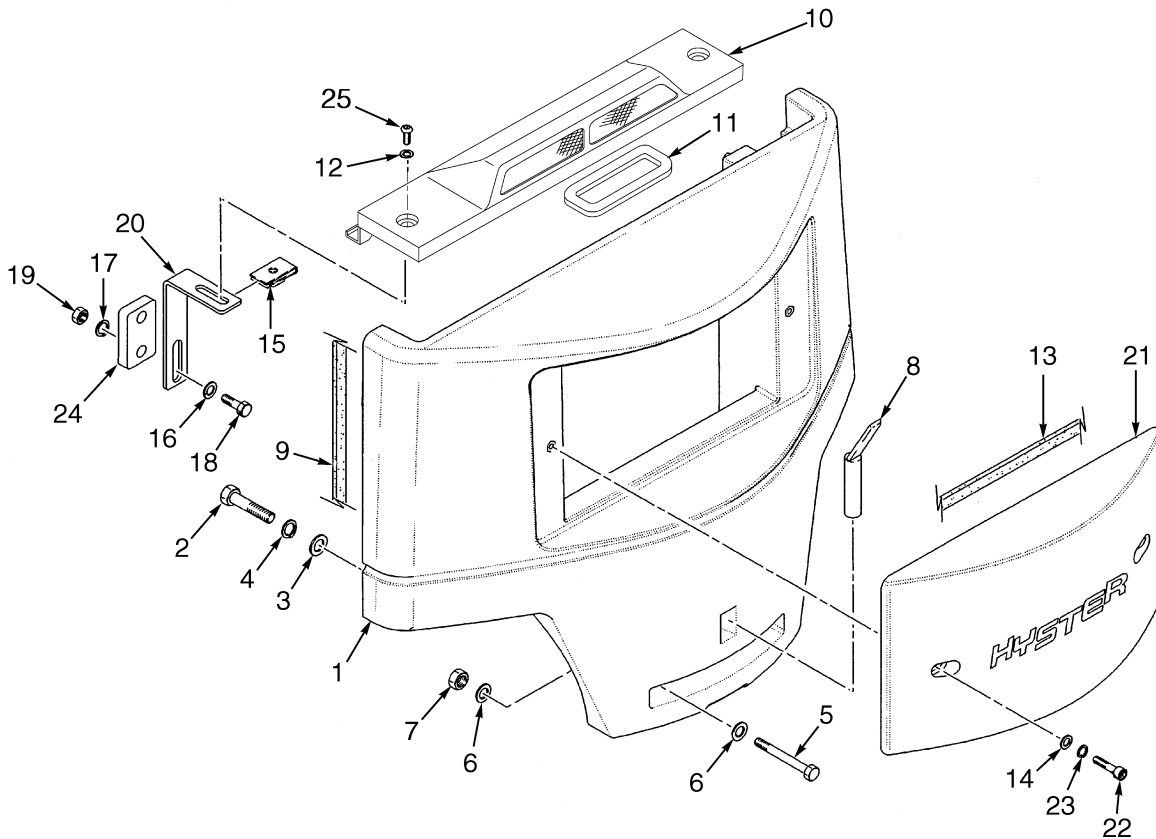


HP120678

OVERHEAD GUARD**KEY:****A: 717 mm Battery Compartment****B: 861 mm Battery Compartment**

ITEM	PART NO.	DESCRIPTION	QTY	
			A	B
1	1531389	Overhead Guard	1	..
1	1531390	Overhead Guard	1
2	320161	Washer	4	4
3	293649	Capscrew.....	4	4
4	292683	Lockwasher.....	6	6
5	1390182	Nut	10	10
6	293647	Capscrew.....	6	6
7	1343647	Handle	1	1
8	329067	Screw.....	2	2
9	1363917	Plug	5	5
10	1363916	Plug	14	14
11	296423	Washer	4	4

COUNTERWEIGHT (Figure 1-6)

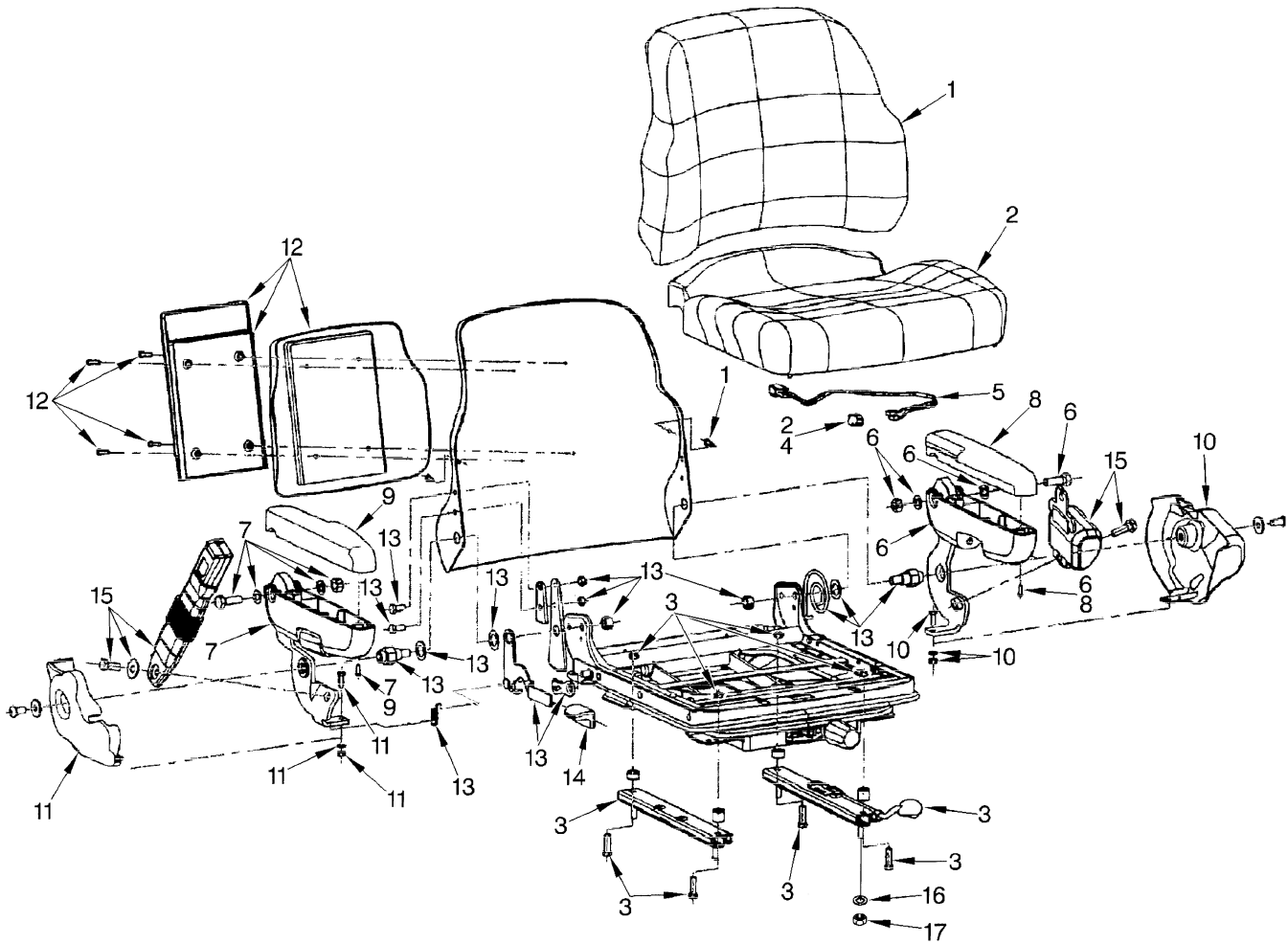


HP120689

COUNTERWEIGHT**KEY:****A: J2.00-2.50XM, 717 mm Battery Compartment****B: J3.00-J3.20XM, 861 mm Battery Compartment**

ITEM	PART NO.	DESCRIPTION	QTY	
			A	B
1	1460391	Counterweight	1	..
1	1460392	Counterweight	1
2	292584	Capscrew.....	2	2
3	296430	Washer	2	2
4	292687	Lockwasher.....	2	2
5	292534	Capscrew.....	2	2
6	320162	Washer	4	4
7	300937	Locknut	2	2
8	326347	Tow Pin	1	1
9	261165	Tape (Foam)	AR	AR
10	1543367	Cover Assembly.....	1	1
11	1545168	Seal	1	1
12	320160	Washer	2	2
13	326003	Tape.....	AR	AR
14	15134	Washer	2	2
15	269200	Nut	2	2
16	320157	Washer	4	4
17	292681	Lockwasher.....	4	4
18	293617	Capscrew.....	4	4
19	239503	Nut	4	4
20	1461187	Bracket.....	2	2
21	1340460	Cover	1	1
22	46698	Capscrew.....	2	2
23	15156	Lockwasher.....	2	2
24	1466505	Spacer (LH)	1	1
25	18738	Capscrew.....	2	2

FULL SUSPENSION SEAT (Figure 1-7) SHEET 1 OF 2

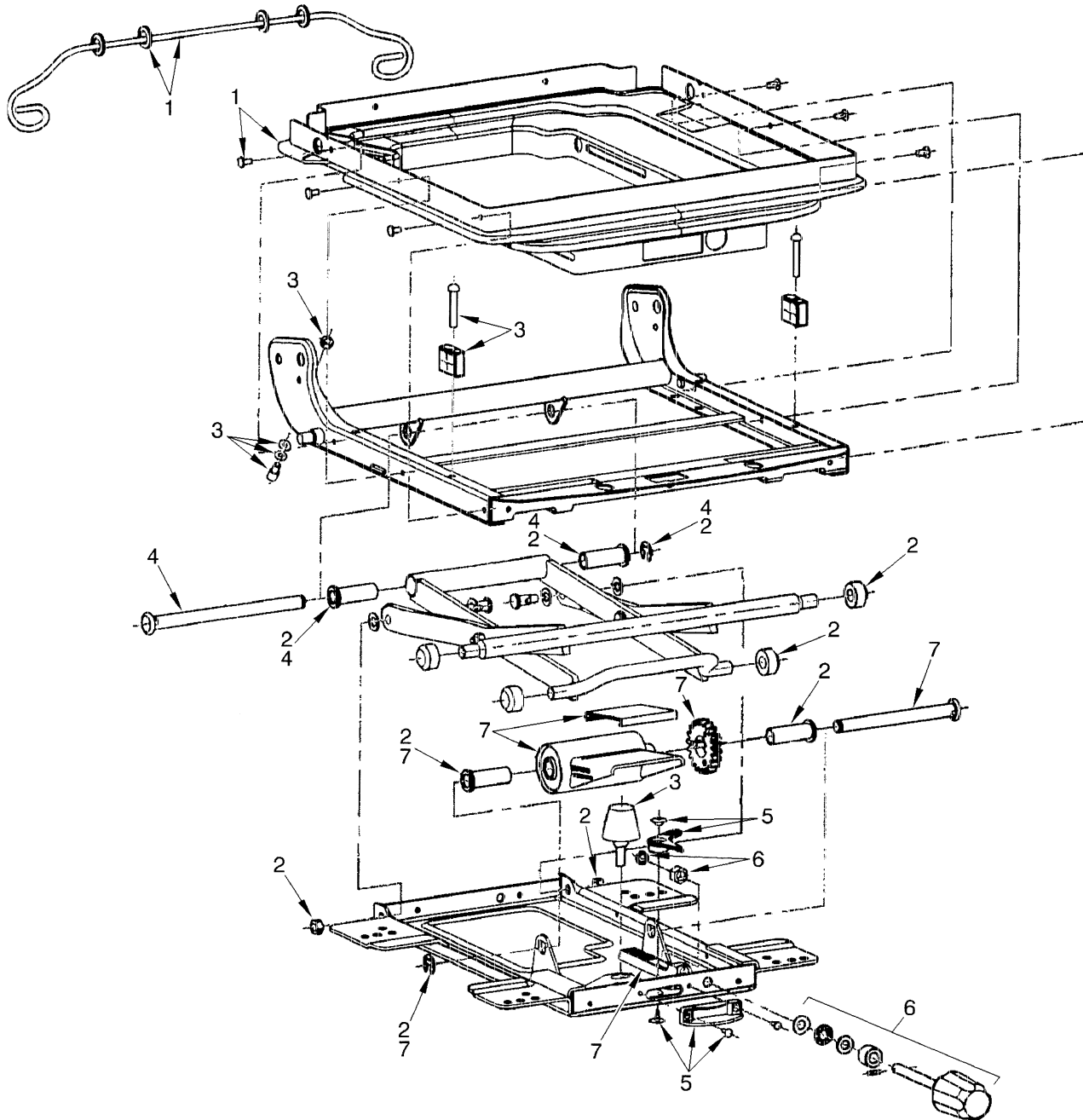


YP260317

**FULL SUSPENSION SEAT
SHEET 1 OF 2**

ITEM	PART NO.	DESCRIPTION	QTY
	1466006	Full Suspension Seat.....	1
1	1467533	Back Cushion (Vinyl).....	1
2	1494076	Seat Cushion (Vinyl).....	1
3	1467513	Slider Kit.....	1
4	1467514	Switch (Seat).....	1
5	1467515	Wire Harness.....	1
6	1467516	Armrest (LH) (LH).....	1
7	1467517	Armrest (RH) (RH).....	1
8	1467518	Cap (LH).....	1
9	1467519	Cap (RH).....	1
10	1467520	Cover (LH).....	1
11	1467521	Cover (RH).....	1
12	1467522	Holder Kit.....	1
13	1467530	Recliner Kit.....	1
14	1467531	Recliner Knob.....	1
15	1467532	Seat Belt Kit.....	1
16	15175	Washer.....	4
17	145639	Nut.....	4

FULL SUSPENSION SEAT (Figure 1-8) SHEET 2 OF 2

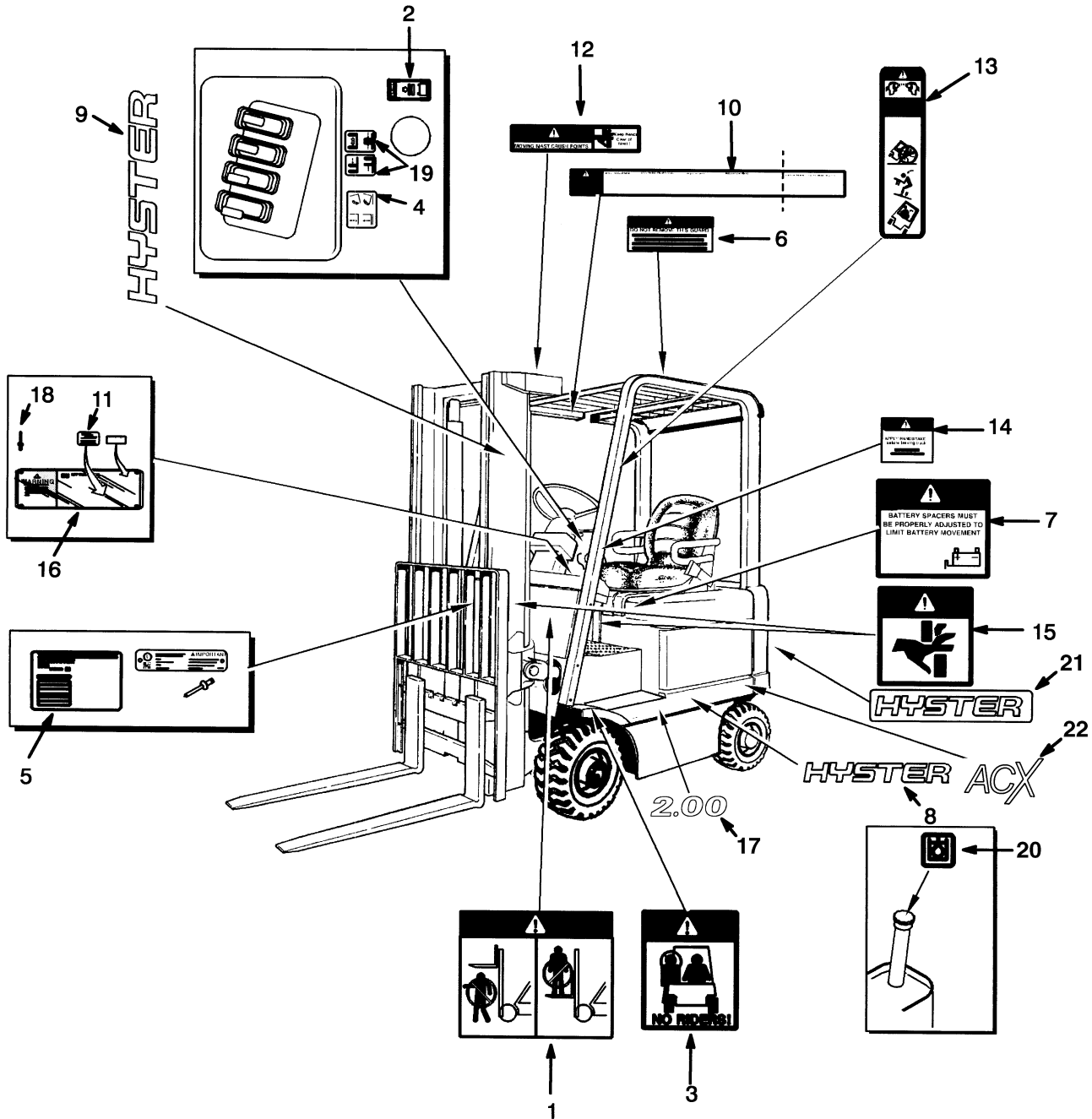


YP260318

**FULL SUSPENSION SEAT
SHEET 2 OF 2**

ITEM	PART NO.	DESCRIPTION	QTY
	1466006	Full Suspension Seat.....	1
1	1467523	Boot Kit.....	1
2	1467524	Roller and Bearing Kit	1
3	1467525	Bumper and Stop Kit	1
4	1467526	Bearing Shaft Kit	1
5	1467527	Weight Adjuster Indicator Kit	1
6	1467528	Knob Kit.....	1
7	1467529	Suspension Spring Kit.....	1

LABELS AND DECALS (Figure 1-9)



HP120679

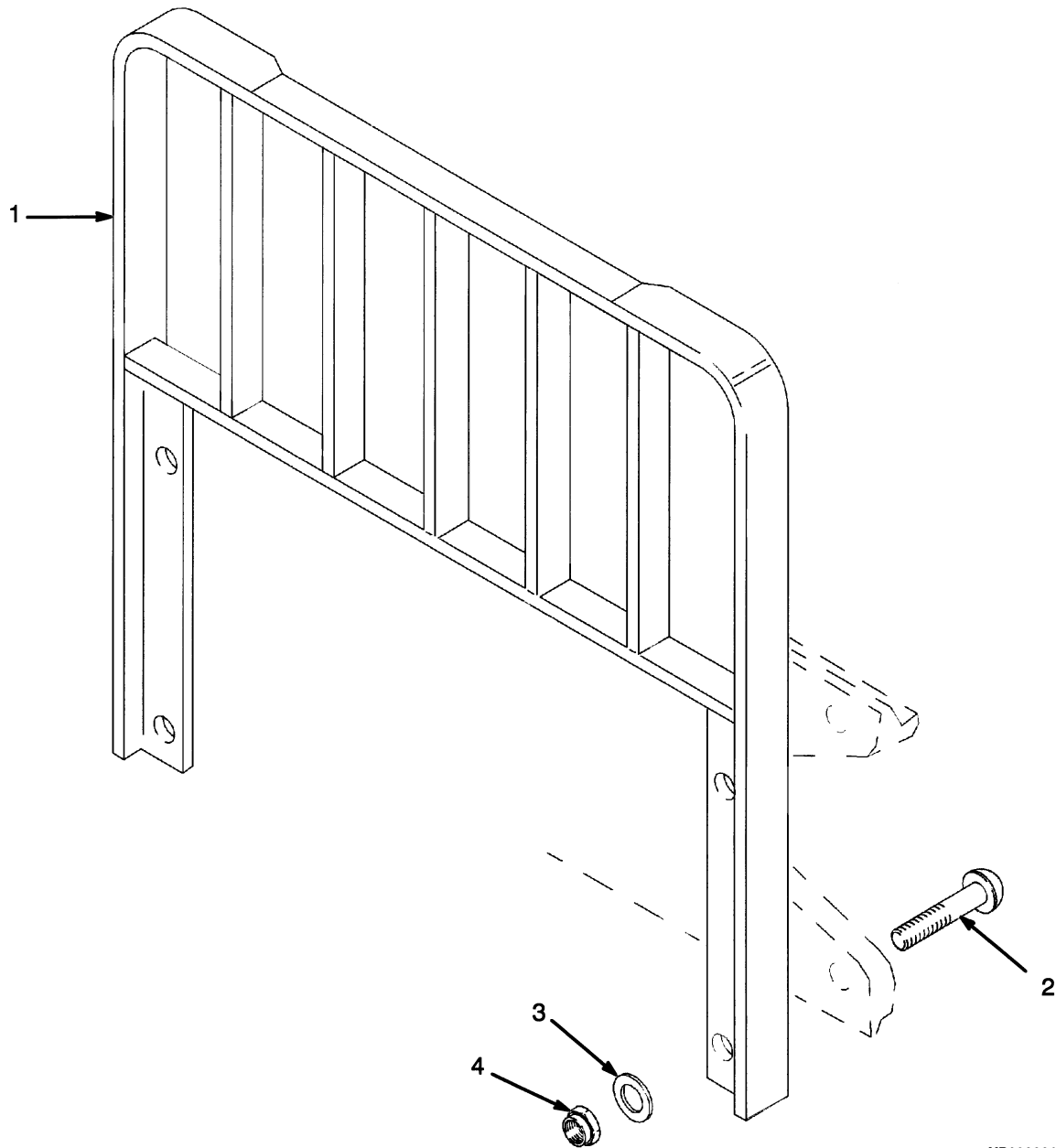
LABELS AND DECALS

ITEM	PART NO.	DESCRIPTION	QTY
1	1339830	Label (Mast Warning)	2
2	2049939	Label (Battery Disconnect)	1
3	1339828	Label (No Riders)	2
4	369573	Label (Lift/Tilt).....	1
5	320037	Label (Patent Plate)	2
6	1335147	Label (Overhead Guard).....	1
7	1342699	Label (Battery Spacer).....	1
8	1339674	Label (Hyster)	2
9	1339672	Label (Hyster)	2
10	d 1335140	Label (Operator Warning)	1
10	b 1373909	Label (Operator Warning)	1
11	1335138	Nameplate Tag (Tag)	1
12	1343276	Label (Mast Warning)	1
13	d 1335143	Label (Tip Over Warning)	2
13	b 1359588	Label (Operator Restraint)	2
14	e 1357001	Label (Park Brake Warning).....	1
14	c 2310911	Label (Parking Brake Warning).....	1
15	1339832	Label (Pinch Point)	2
16	a	Nameplate	1
17	1339667	Label (Model 2.00).....	2
17	1339668	Label (Model 2.50).....	2
17	1339669	Label (Model 3.00).....	2
17	1339670	Label (Model 3.20).....	2
18	1380584	Rivet.....	4
19	370258	Label (Auxiliary Function - Side-Shift)	1
19	370259	Label (Auxiliary Function - Fork Spreader)	1
20	1385099	Label (Hydraulic Oil Fill).....	1
21	878531	Label (Hyster)	1
22	1539387	Label (ACX)	2

FOOTNOTES:

- a** Contact Your Local Hyster Dealer
- b** With Operator Restraint
- c** With Park Brake Alarm
- d** Without Operator Restraint
- e** Without Parking Brake Alarm

LOAD BACKREST EXTENSION (Figure 1-10)



YP290001

LOAD BACKREST EXTENSION

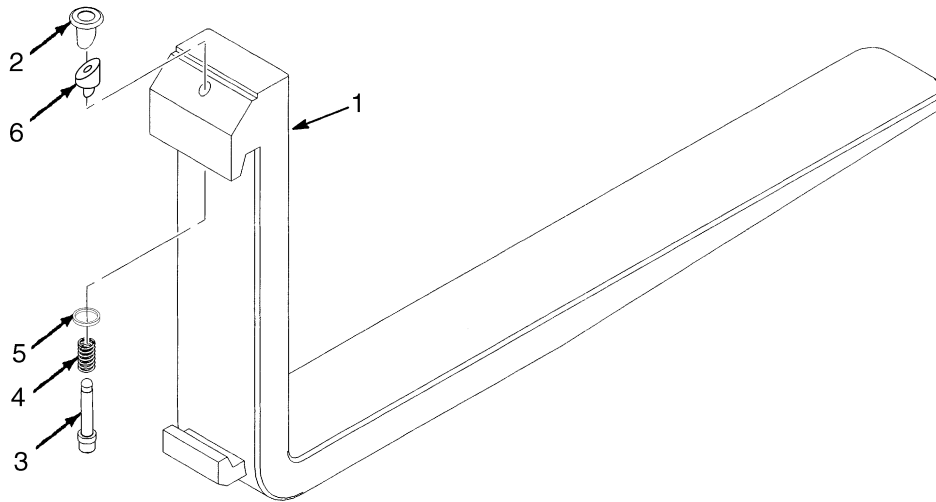
KEY:

A: J2.00-2.50XM

B: J3.00-3.20XM

ITEM	PART NO.	DESCRIPTION	QTY	
			A	B
1	1349446	Load Backrest Extension (977 mm).....	1	..
1	1363816	Load Backrest Extension (965 mm).....	..	1
2	2034347	Capscrew.....	4	4
3	221771	Washer	4	4
3	296423	Washer (Optional).....	4	4
4	300937	Locknut	4	4

FORKS (Figure 1-11)



BP290003

KEY:

A: J2.00-2.50XM Standard Taper

B: J3.00-3.20XM Standard Taper

ITEM	PART NO.	DESCRIPTION	QTY	
			A	B
1	a 1333043	Fork (1000 mm)	2	..
1	a 1333044	Fork (1100 mm)	2	..
1	a 1333045	Fork (1200 mm)	2	..
1	b 1352366	Fork (991 mm)	2
1	b 1352367	Fork (1092 mm)	2
1	b 1352369	Fork (1194 mm)	2
2	1523732	Knob	1	1
3	1523733	Pin	1	..
3	1523737	Pin	1
4	1500782	Spring	1	..
4	1500784	Spring	1
5	1477166	Washer	1	1
6	1477167	Wedge	1	..
6	1477237	Wedge	1
7	1523734	Retainer Pin (Not Illustrated)	1	1
	1523735	Latch Kit (Class II) (Includes Items 2-7)	2	..
	1523739	Latch Kit (Class III) (Includes Items 2-7)	2

FOOTNOTES:

a 100 mm x 40 mm

b 100 mm x 45 mm

BUY NOW

**Then Instant Download
the Complete Manual
Thank you very much!**