

# **PARTS MANUAL**

---

**ELECTRIC**

**E3.50-5.50XL, E4.50XLS  
(C098)**

CUSTOMER EDITION

---

***HYSTER***

**SECTIONS**

<b>1</b>	<b>FRAME</b>
<b>2</b>	<b>ELECTRICAL SYSTEM</b>
<b>3</b>	<b>DRIVE UNIT</b>
<b>4</b>	<b>STEERING SYSTEM</b>
<b>5</b>	<b>BRAKE/ACCELERATOR SYSTEM</b>
<b>6</b>	<b>HYDRAULIC SYSTEM</b>
<b>7</b>	<b>MAST-TWO STAGE LIMITED FREE-LIFT</b>
<b>8</b>	<b>MAST-THREE STAGE FULL FREE-LIFT</b>
<b>9</b>	<b>MAST-TWO STAGE FULL FREE-LIFT</b>
<b>10</b>	<b>OPTIONS</b>
<b>11</b>	<b>NUMERICAL INDEX</b>

This Parts Manual is divided into 11 major sections which are listed above. Quick reference to these sections can be made by placing the right thumb on the tab of the desired section, bending the book back and thumbing the pages to the corresponding tab.

**1**

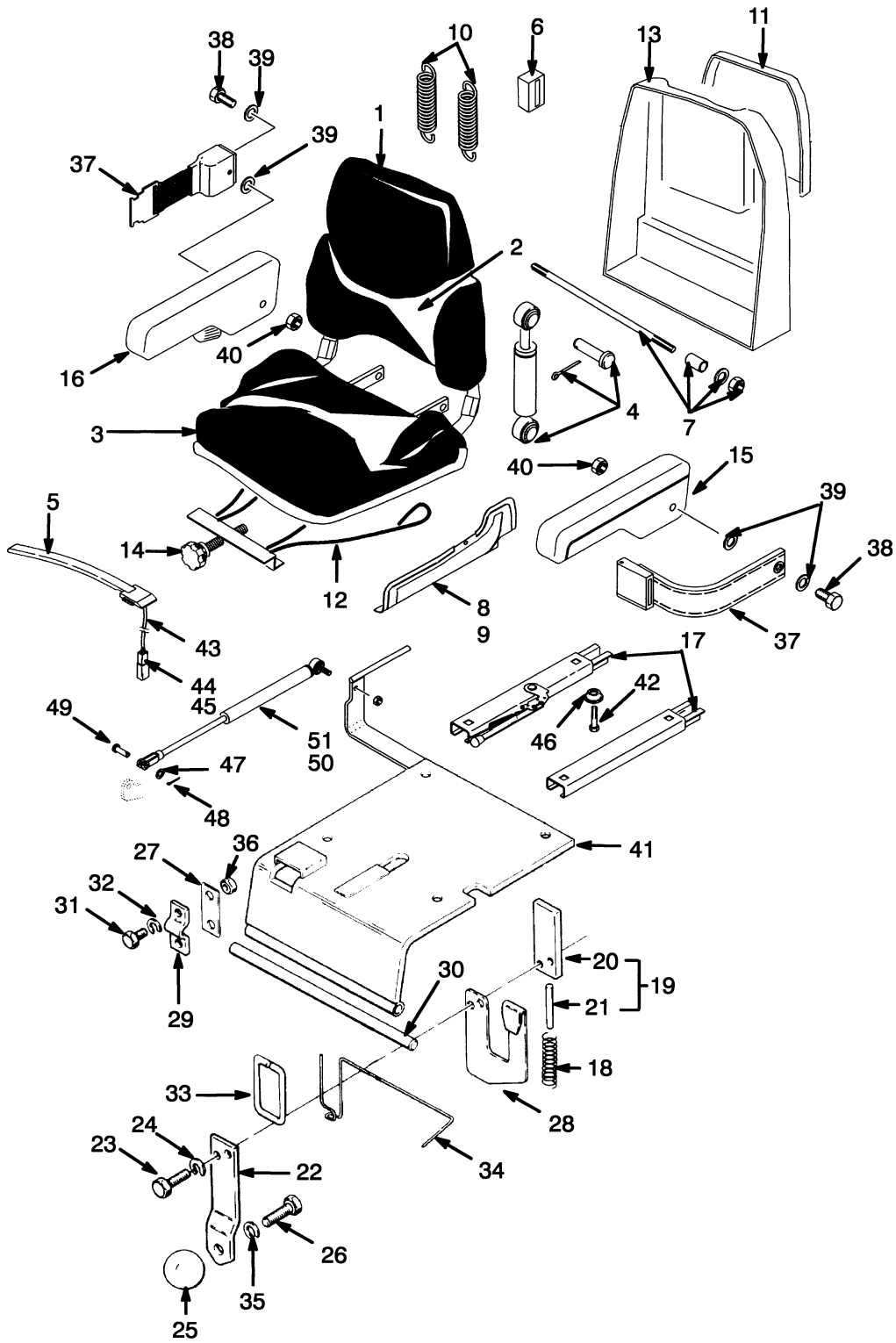
**FRAME**

**SECTION 1  
FRAME**

---

<b>DESCRIPTION</b>	<b>PAGE</b>
COUNTERWEIGHT .....	1-18
FLOOR PLATES AND COVERS .....	1-10
FORK	
HOOK TYPE .....	1-26
HOOK TYPE OPTIONAL .....	1-28
HOOD .....	1-14
LABELS .....	1-21
LOAD BACKREST EXTENSION .....	1-24
NON-SUSPENSION SEAT	
SEARS .....	1-8
OVERHEAD GUARD .....	1-16
SEMI SUSPENSION SEAT	
WITH ARM REST .....	1-6
SEMI-SUSPENSION SEAT	
SEARS .....	1-2

## SEMI-SUSPENSION SEAT (Figure 1-1) SEARS



YP120186

**SEMI-SUSPENSION SEAT  
SEARS****KEY:****A: Fabric Seat****B: Vinyl Seat**

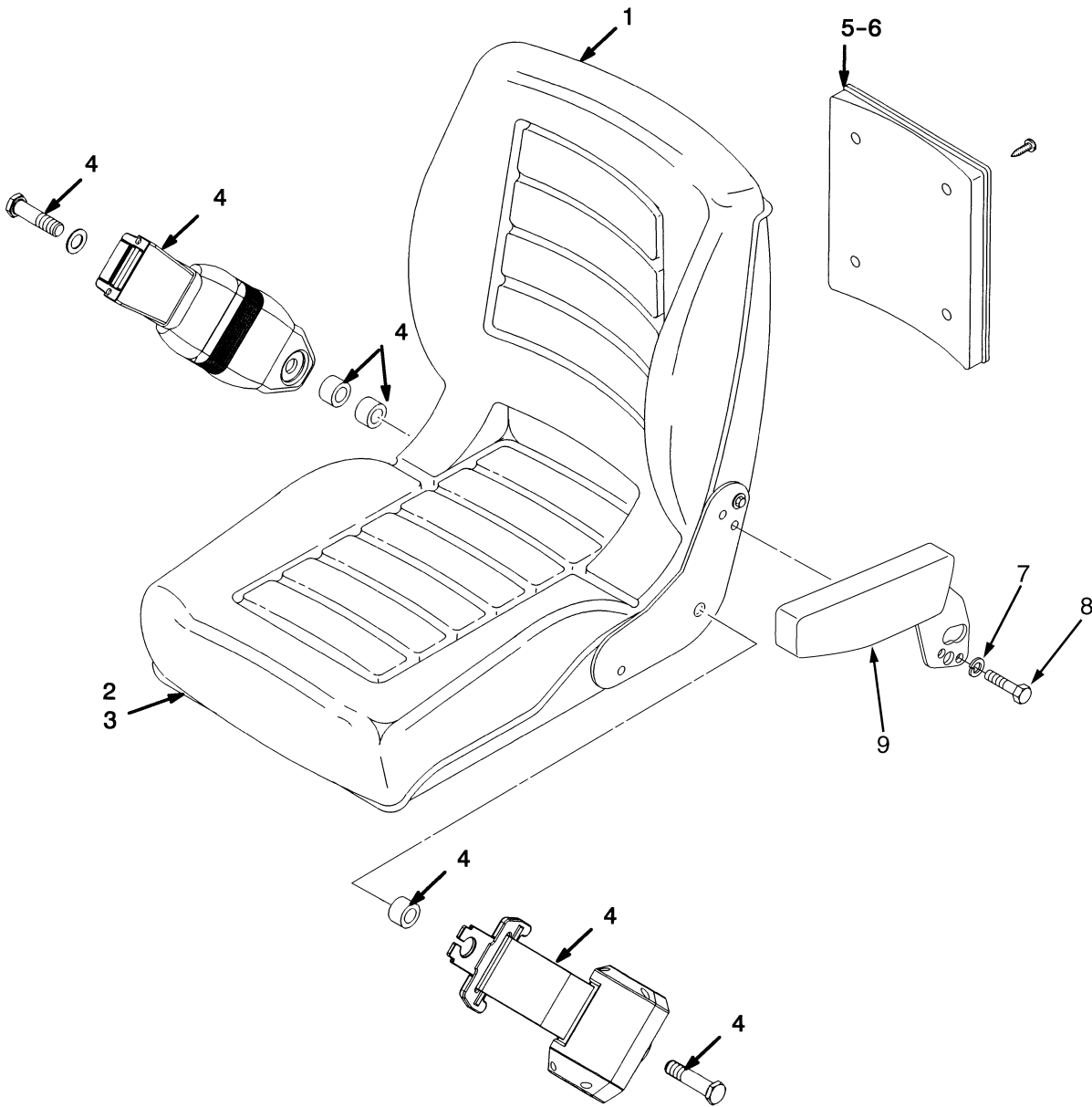
ITEM	PART NO.	DESCRIPTION	QTY	
			A	B
1	1450209	Semi-Suspension Seat .....	..	1
1	1450210	Semi-Suspension Seat .....	1	..
2	1382111	Back Cushion .....	..	1
2	1382113	Back Cushion .....	1	..
3	1382112	Seat Cushion.....	..	1
3	1382114	Seat Cushion.....	1	..
4	1362049	Shock Absorber Kit.....	1	1
5	1354140	Switch Assembly .....	1	1
6	1362052	Block.....	1	1
7	1362053	Shaft and Bearing Kit .....	1	1
8	1453885	Cover (RH) .....	1	1
9	1453884	Cover (LH).....	1	1
10	1367137	Suspension Spring Kit.....	1	1
11	1453887	Holder.....	1	1
12	1378307	Suspension Cable Kit.....	1	1
13	1453886	Cover (Rear).....	1	1
14	1362061	Knob Kit.....	1	1
15	1453882	Armrest (LH).....	1	1
16	1453883	Armrest (RH).....	1	1
17	1459114	Seat Rail Kit.....	1	1
18	359849	Spring .....	1	1
19	1461896	Latch .....	1	1
20	1461888	Plate .....	1	1
21	302428	Pin .....	1	1
22	325592	Plate .....	1	1
23	287817	Capscrew.....	2	2
24	292680	Lockwasher.....	2	2
25	190481	Knob .....	1	1
26	16372	Capscrew.....	1	1
27	325616	Spacer .....	AR	AR
28	362004	Spring Latch .....	1	1
29	355374	Clamp .....	2	2
30	360730	Bar .....	1	1
31	287860	Capscrew.....	4	4
32	292682	Lockwasher.....	4	4
33	362005	Rod .....	1	1
34	355336	Spring .....	1	1
35	15156	Lockwasher.....	1	1
36	136692	Nut .....	4	4
37	.....	Seat Belt.....	1	1
38	.....	Bolt .....	2	2
39	.....	Washer .....	4	4
40	.....	Nut .....	2	2
41	<b>a</b> 1463968	Plate .....	1	1
41	<b>b</b> 1528835	Plate .....	1	1
42	220146	Capscrew.....	4	4

## SEMI-SUSPENSION SEAT SEARS

ITEM	PART NO.	DESCRIPTION	QTY	
			A	B
43	1459215	Wire Harness.....	1	1
44	1330409	Connector.....	1	1
45	1330414	Secondary Lock.....	1	1
46	204114	Spacer.....	4	4
47	18515	Washer.....	1	1
48	15212	Cotter Pin.....	1	1
49	139	Rod End Pin.....	1	1
50	251099	Adhesive.....	AR	AR
51	865371	Gas Spring.....	1	1
	1461081	Seat Belt Kit (Includes Items 37-40).....	1	1

**FOOTNOTES:****a** ⇒ D/B 06/2002**b** D/B 06/2002 ⇒

## SEMI SUSPENSION SEAT (Figure 1-2) WITH ARM REST



HP120143

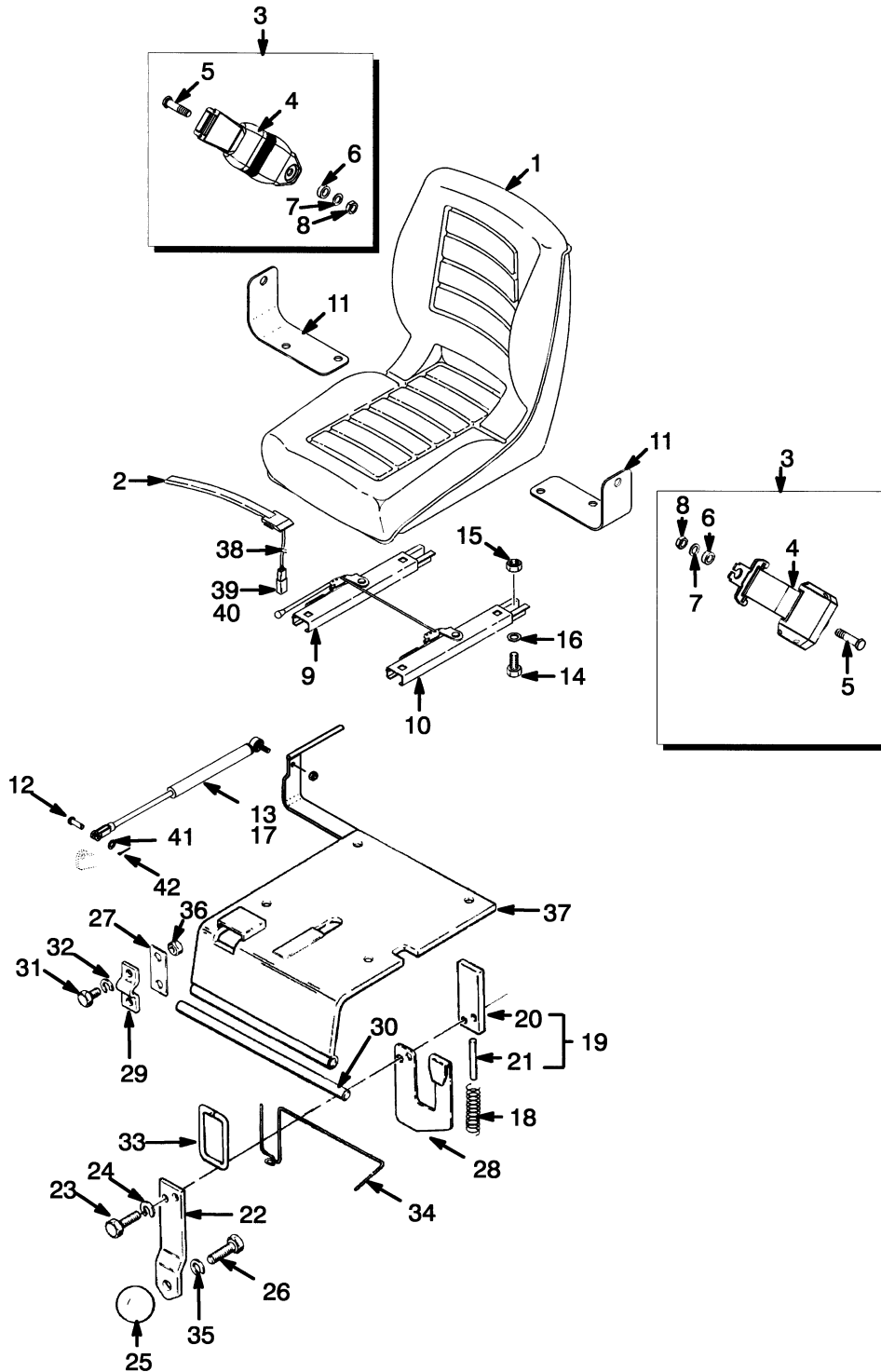


**SEMI SUSPENSION SEAT  
WITH ARM REST**

ITEM	PART NO.	DESCRIPTION	QTY
	2041645	Semi-Suspension Seat .....	1
1	1480403	Back Cushion .....	1
2	1480404	Seat Cushion (With Switch).....	1
3	<b>a</b> 1480405	Slider Kit .....	1
4	1461081	Seat Belt Kit.....	1
5	335989	Tube.....	1
6	335991	Cover .....	1
7	292681	Lockwasher.....	4
8	287851	Capscrew.....	4
9	1492119	Armrest (LH) .....	1
9	1492120	Armrest (RH) .....	1
	1492278	Armrest Kit (Includes Items 7-9).....	1

**FOOTNOTES:****a** Not Illustrated

## NON-SUSPENSION SEAT (Figure 1-3) SEARS



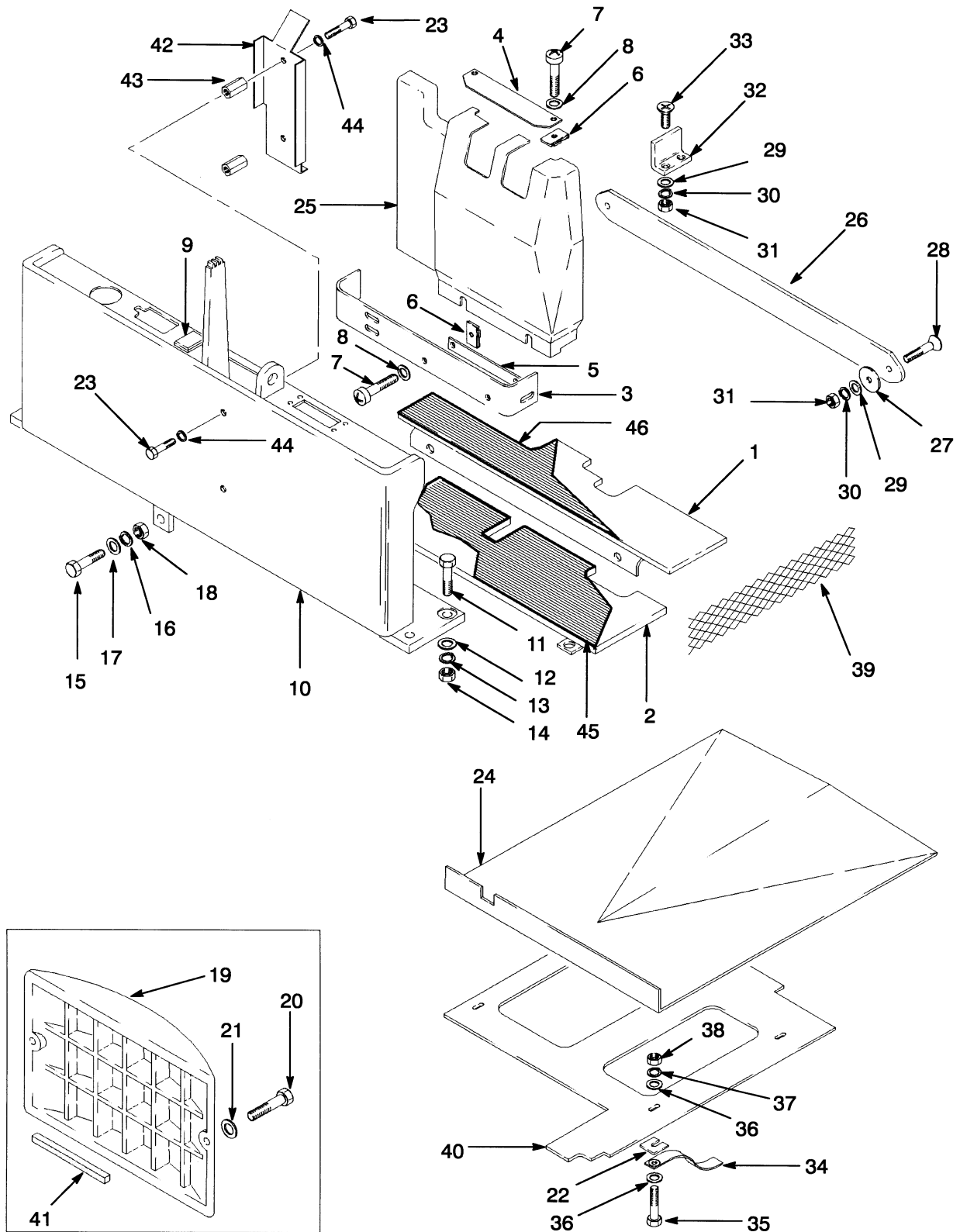
HP120187

**NON-SUSPENSION SEAT  
SEARS**

ITEM	PART NO.	DESCRIPTION	QTY
	1460231	Non-Suspension Seat.....	1
1	364911	Seat.....	1
2	2037311	Switch Assembly.....	1
3	1461081	Seat Belt Kit.....	1
4	.....	Seat Belt.....	1
5	.....	Screw.....	2
6	.....	Washer.....	2
7	.....	Washer.....	2
8	.....	Nut.....	2
9	1470176	Seat Rail (RH).....	1
10	1470177	Seat Rail (LH).....	1
11	1470175	Bracket.....	1
12	139	Rod End Pin.....	1
13	251099	Adhesive.....	AR
14	18897	Capscrew.....	4
15	222665	Nut.....	4
16	18515	Washer.....	4
17	865371	Gas Spring.....	1
18	359849	Spring.....	1
19	1461896	Latch.....	1
20	1461888	Plate.....	1
21	302428	Pin.....	1
22	325592	Plate.....	1
23	287817	Capscrew.....	2
24	292680	Lockwasher.....	2
25	190481	Knob.....	1
26	16372	Capscrew.....	1
27	325616	Spacer.....	AR
28	362004	Spring Latch.....	1
29	355374	Clamp.....	2
30	360730	Bar.....	1
31	287860	Capscrew.....	4
32	292682	Lockwasher.....	4
33	362005	Rod (Formed).....	1
34	355336	Spring.....	1
35	15156	Lockwasher.....	1
36	136692	Nut.....	4
37	<b>a</b> 1463968	Plate.....	1
37	<b>b</b> 1528835	Plate.....	1
38	1459215	Wire Harness.....	1
39	1330409	Connector.....	1
40	1330414	Secondary Lock.....	1
41	18515	Washer.....	1
42	15212	Cotter Pin.....	1
	1461081	Seat Belt Kit (Includes Items 4-8).....	1

**FOOTNOTES:****a** ⇒ D/B 06/2002**b** D/B 06/2002 ⇒

## FLOOR PLATES AND COVERS (Figure 1-4)



HP120188

**FLOOR PLATES AND COVERS**

ITEM	PART NO.	DESCRIPTION	QTY
1	<b>bd</b> 1462416	Floorplate (Rear) .....	1
1	<b>ad</b> 1462417	Floorplate (Rear) .....	1
1	<b>ac</b> 1462418	Floorplate (Rear) .....	1
1	<b>bc</b> 2037419	Floorplate (Rear) .....	1
2	<b>d</b> 1462420	Floorplate (Front) .....	1
2	<b>c</b> 2037420	Floorplate (Front) .....	1
3	375159	Plate .....	1
4	375160	Plate .....	1
5	325096	Plate .....	1
6	1354323	Nut (Foldover) .....	6
7	302049	Screw .....	6
8	320156	Washer .....	6
9	374046	Plug .....	1
10	1465893	Cowl .....	1
11	221570	Capscrew .....	8
12	221771	Washer .....	8
13	15158	Lockwasher .....	8
14	221712	Nut .....	8
15	136985	Capscrew .....	1
16	292682	Lockwasher .....	1
17	320159	Washer .....	2
18	136692	Nut .....	1
19	375184	Cover .....	1
20	16828	Capscrew .....	2
21	221767	Washer .....	2
22	<b>e</b> 361998	Plate .....	4
23	18718	Capscrew .....	4
24	1462422	Cover (E3.50-4.00XL, E4.50XLS) .....	1
24	1462423	Cover (E4.50-5.50XL) .....	1
25	375161	Cover (Two, Three, and Four Function Valves) .....	1
25	375162	Cover (Five Function Valve) .....	1
26	375249	Plate .....	1
27	361973	Spacer .....	12
28	296248	Capscrew .....	2
29	296421	Washer .....	6
30	292682	Lockwasher .....	6
31	136692	Nut .....	6
32	375226	Spacer .....	2
33	296241	Capscrew .....	4
34	<b>e</b> 216895	Static Strap .....	2
35	<b>e</b> 176640	Capscrew .....	4
36	<b>e</b> 320158	Washer .....	8
37	<b>e</b> 292681	Lockwasher .....	2
37	<b>e</b> 296406	Washer .....	2
38	<b>e</b> 239503	Nut .....	4
39	<b>e</b> 1302491	Sheet .....	2
40	<b>e</b> 1302492	Plate .....	1
41	<b>e</b> 361988	Tape .....	AR
42	1330825	Cover .....	1
43	1328480	Standoff .....	2
44	15154	Lockwasher .....	4

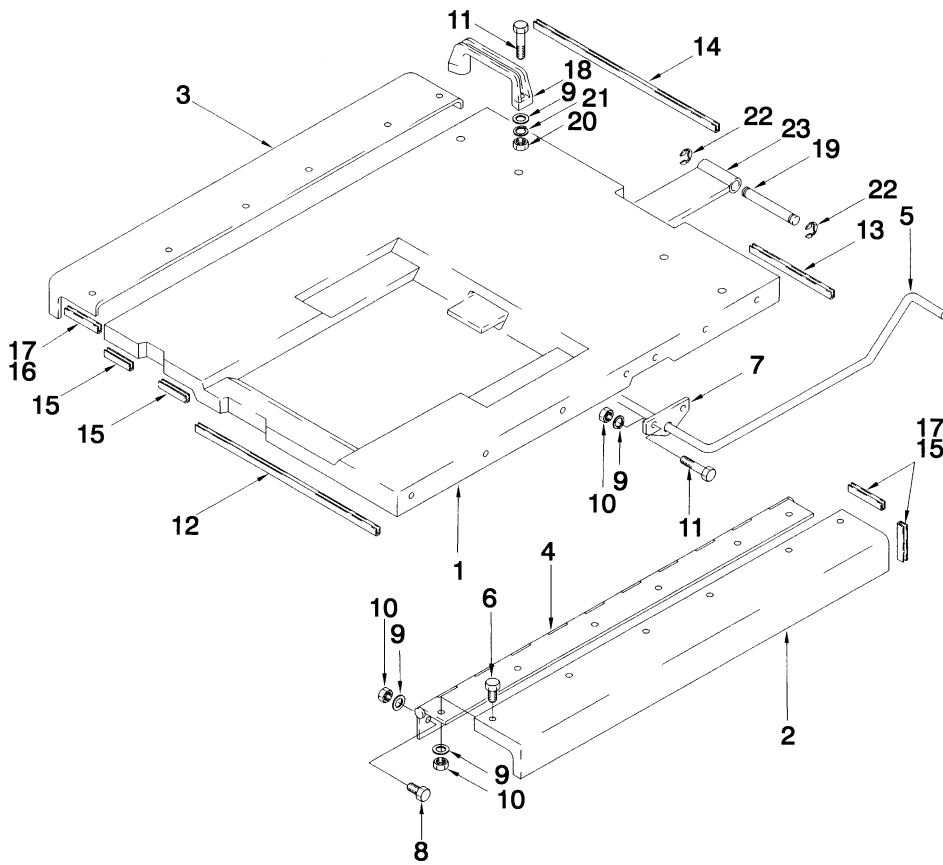
## FLOOR PLATES AND COVERS

ITEM	PART NO.	DESCRIPTION	QTY
45	2037421	Floormat (Front).....	1
46	<b>a</b> 1462429	Floormat (Rear).....	1
46	<b>b</b> 2037422	Floormat (Rear).....	1

### FOOTNOTES:

- a** "A" Position Battery Connector
- b** "B" Position Battery Connection
- c** Smooth
- d** Textured
- e** Type EE

## HOOD (Figure 1-5)



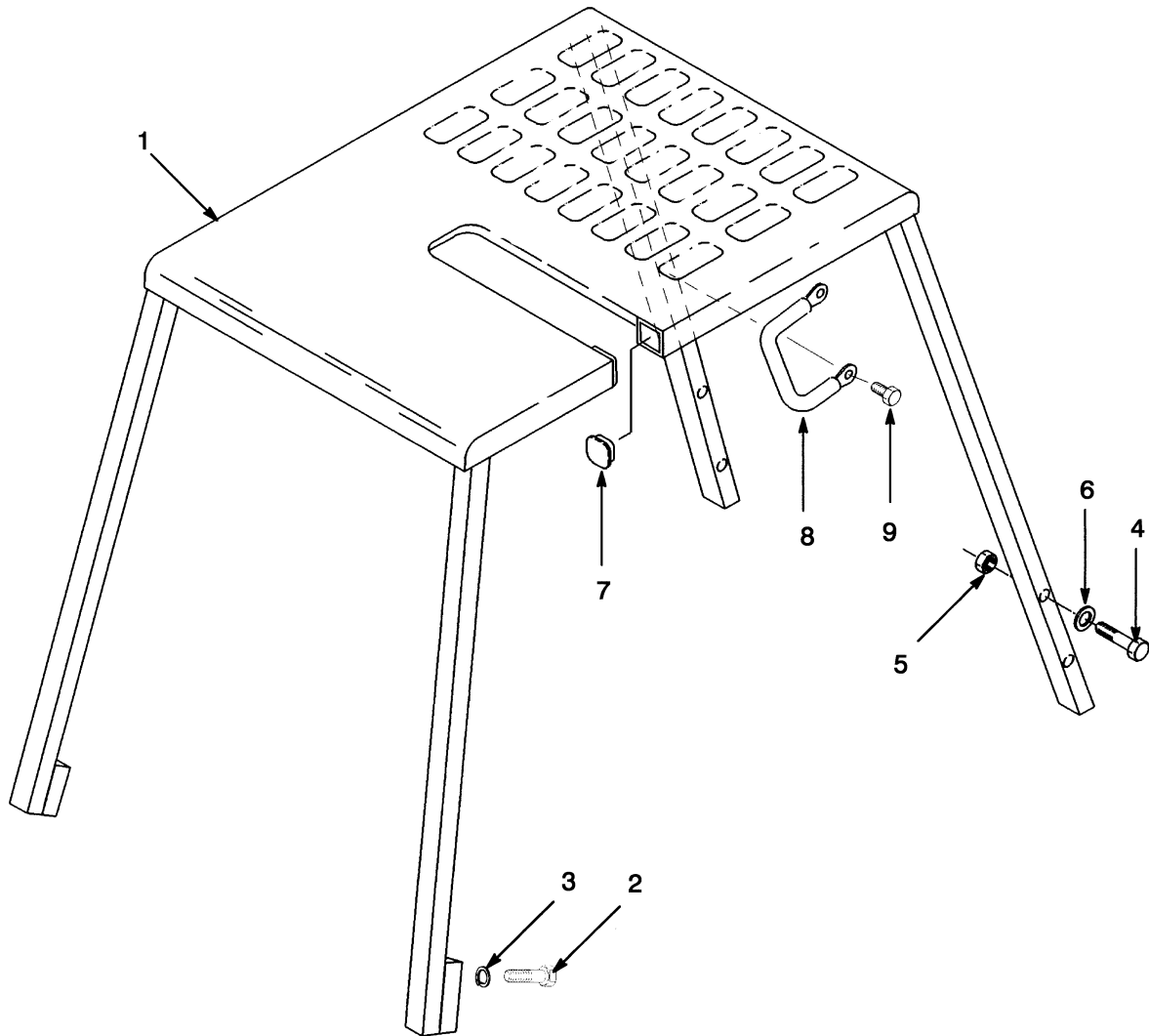
HP120189

**HOOD****KEY:****A: E3.50-4.00XL, 4.50XLS****B: E4.50-5.50XL**

ITEM	PART NO.	DESCRIPTION	QTY	
			A	B
1	1461930	Hood .....	1	..
1	1461931	Hood .....	..	1
2	1462074	Hood (LH) .....	1	..
2	1462075	Hood (LH) .....	..	1
3	1462078	Hood (RH) .....	1	..
3	1462079	Hood (RH) .....	..	1
4	1462088	Hinge .....	2	..
4	1462089	Hinge .....	..	2
5	1302505	Hinge .....	1	1
6	296215	Capscrew.....	12	12
7	388768	Bracket.....	2	2
8	292500	Capscrew.....	10	10
9	320156	Washer .....	30	30
10	313805	Nut .....	26	26
11	287816	Capscrew.....	8	8
12	362031	Trim .....	1	1
13	375295	Trim .....	1	1
14	375296	Trim .....	1	1
15	325980	Trim .....	6	6
16	388752	Trim .....	2	2
17	362043	Adhesive .....	AR	AR
18	362030	Handle .....	2	2
19	1302519	Pin .....	1	1
20	136687	Nut .....	4	4
21	292680	Lockwasher.....	4	4
22	185118	E-Ring.....	2	2
23	1302506	Plate .....	1	..
23	1302507	Plate .....	..	1



## OVERHEAD GUARD (Figure 1-6)



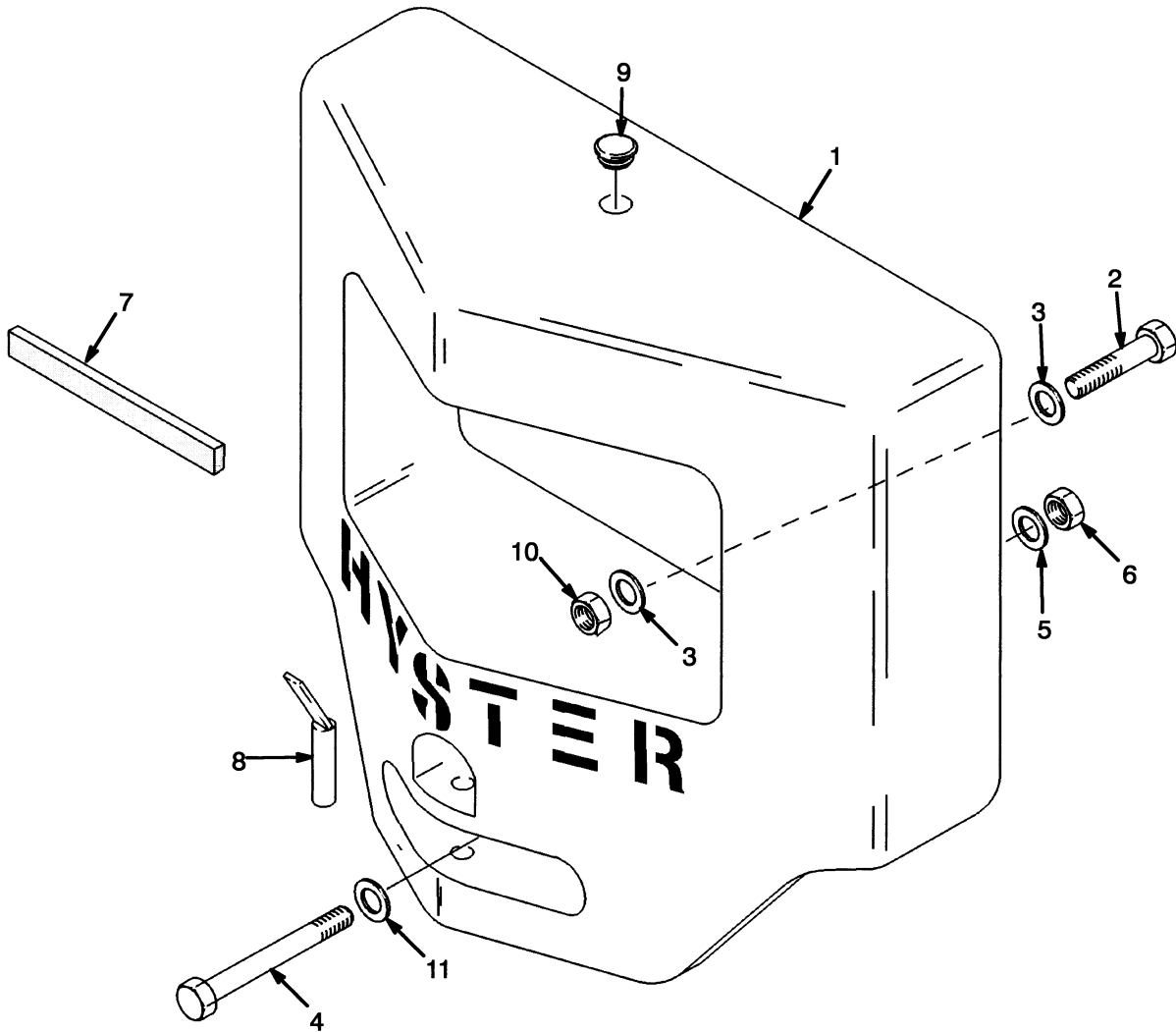
HP120190

**OVERHEAD GUARD****KEY:****A: E3.50-4.00XL, E4.50XLS (Standard Height)****B: E4.50-5.50XL (Standard Height)****C: E3.50-4.00XL, E4.50XLS (Raised Height)****D: E4.50-5.50XL (Raised Height)**

ITEM	PART NO.	DESCRIPTION	QTY			
			A	B	C	D
1	1302512	Overhead Guard .....	1	..	..	..
1	1302513	Overhead Guard .....	..	1	..	..
1	1302514	Overhead Guard .....	..	..	1	..
1	1302515	Overhead Guard .....	..	..	..	1
1	<b>b</b> 1541237	Overhead Guard .....	..	..	1	..
1	<b>a</b> 1541240	Overhead Guard .....	..	..	..	1
2	293646	Capscrew .....	4	4	4	4
3	292683	Lockwasher .....	4	4	4	4
4	221581	Capscrew .....	4	4	4	4
5	221355	Nut .....	4	4	4	4
6	15135	Washer .....	8	8	8	8
7	329699	Plug .....	2	2	2	2
8	1343647	Handle .....	1	1	1	1
9	329067	Screw .....	2	2	2	2

**FOOTNOTES:****a** Long Frame Grid Type**b** Short Frame Grid Type

## COUNTERWEIGHT (Figure 1-7)



HP120191

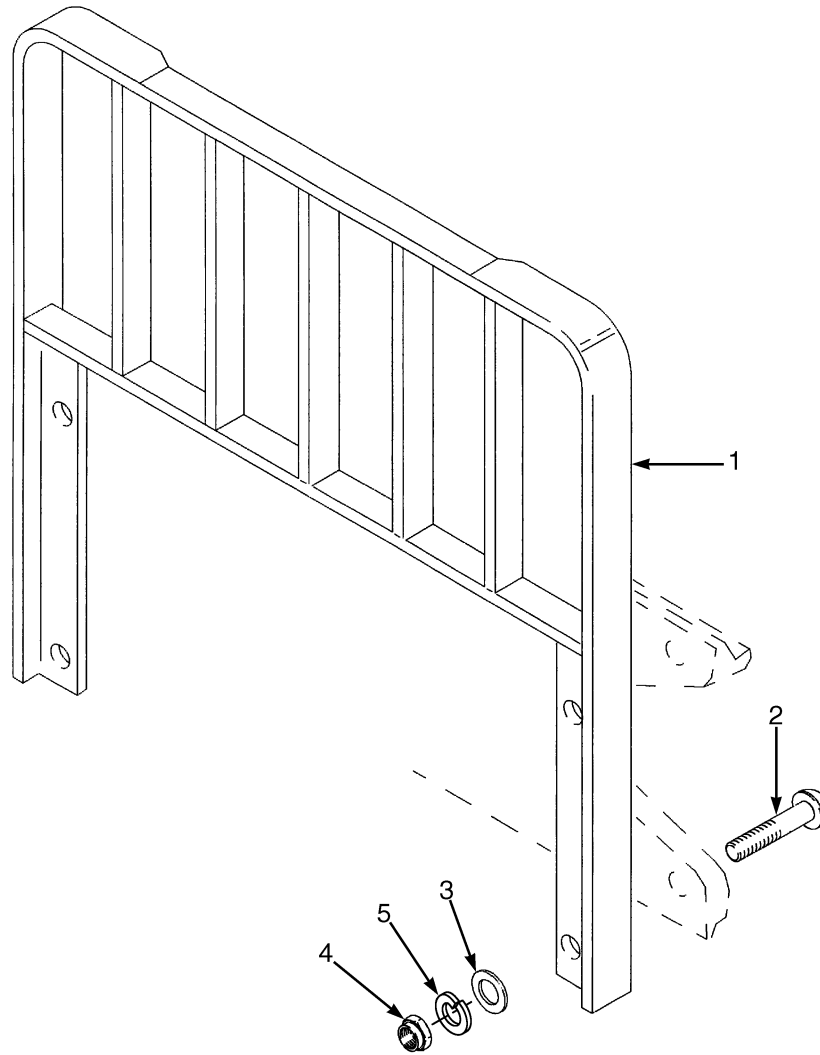
**COUNTERWEIGHT**

ITEM	PART NO.	DESCRIPTION	QTY
1	<b>a</b> 375145	Counterweight (E4.50XLS, E5.50XL) .....	1
1	<b>b</b> 1519765	Counterweight (E4.50XLS, E5.50XL) .....	1
1	<b>a</b> 375146	Counterweight (E4.00XL, E4.50XL).....	1
1	<b>b</b> 1519764	Counterweight (E4.00XL, E4.50XL).....	1
1	<b>a</b> 375147	Counterweight (E3.50XL) .....	1
1	<b>b</b> 1519763	Counterweight (E3.50XL) .....	1
2	1388511	Capscrew.....	2
3	221779	Washer .....	4
4	287814	Capscrew.....	2
5	300932	Washer .....	2
6	300937	Locknut .....	2
7	326003	Tape.....	AR
8	326347	Tow Pin .....	1
9	375479	Plug .....	1
10	221359	Nut .....	2
11	300932	Washer .....	2

**FOOTNOTES:**

- a** ⇒ D/B 04/2002  
**b** D/B 04/2002 ⇒

## LOAD BACKREST EXTENSION (Figure 1-9)



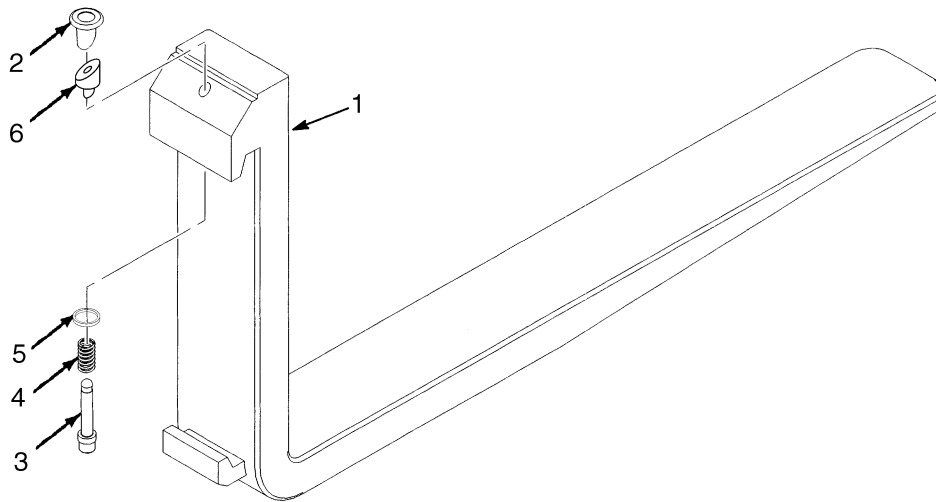
BP290015

**LOAD BACKREST EXTENSION****KEY:****A: E70-80XL3, E100XL3S****B: E100-120XL3**

ITEM	PART NO.	DESCRIPTION	QTY	
			A	B
1	1487340	Load Backrest Extension (1067 mm).....	1	..
1	1387341	Load Backrest Extension (1219 mm).....	1	..
1	<b>b</b> 1387342	Load Backrest Extension (1219 mm).....	1	..
1	1387347	Load Backrest Extension (1067 mm).....	..	1
1	1387348	Load Backrest Extension (1219 mm).....	..	1
1	<b>a</b> 1481225	Load Backrest Extension (1067 mm).....	..	1
1	<b>b</b> 1464863	Load Backrest Extension (1219 mm).....	..	1
2	1345923	Capscrew (Standard Carriage).....	4	4
2	1387330	Capscrew (Side-Shift Carriage).....	4	4
3	221771	Washer .....	4	4
3	296423	Washer (Optional).....	4	4
4	292656	Nut .....	4	4
5	292683	Lockwasher.....	4	4

**FOOTNOTES:****a** Polished And Tapered**b** Polished Fork with Full Bottom Taper

## FORK (Figure 1-10) HOOK TYPE



BP290003

**KEY:**

- A: Standard Taper (E3.50-4.00 XL, E4.50XLS)**
- B: Standard Taper (E4.50XL) Attachment Carriage**
- C: Standard Taper (E4.50-5.50XL)**
- D: Full Bottom Taper (E3.50-4.00XL, E4.50XLS)**

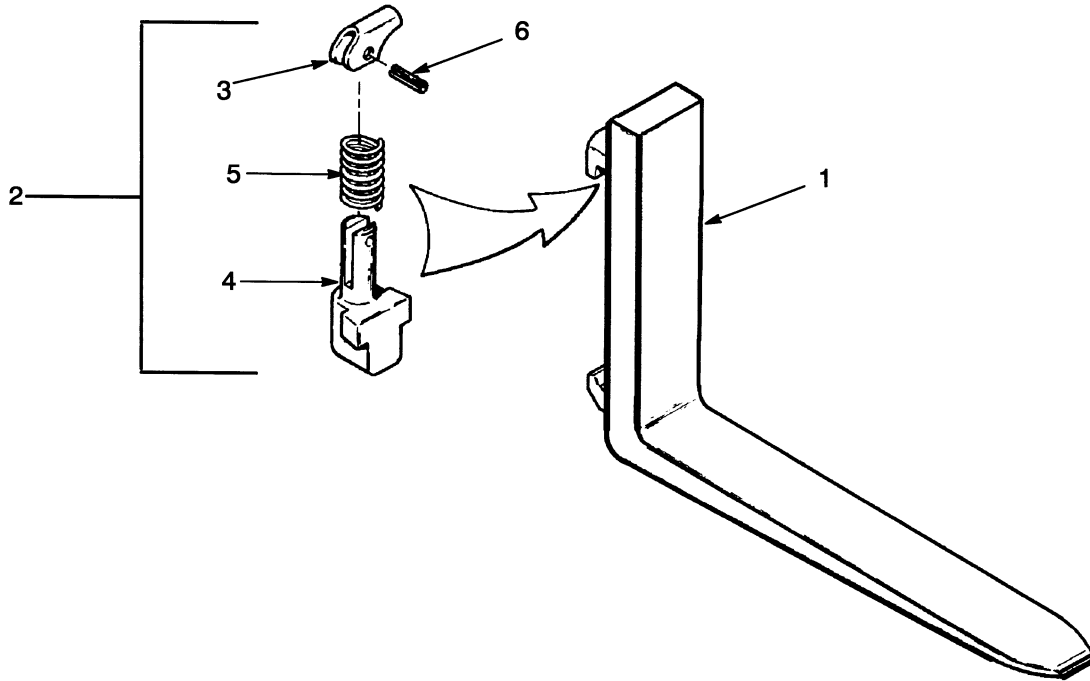
ITEM	PART NO.	DESCRIPTION	QTY			
			A	B	C	D
1	1332745	Fork (1372 mm) .....	..	..	..	2
1	1333001	Fork (1219 mm) .....	..	..	2	..
1	1333002	Fork (1372 mm) .....	..	..	2	..
1	1333003	Fork (1524 mm) .....	..	..	2	..
1	1333004	Fork (1829 mm) .....	..	..	2	..
1	1333046	Fork (1219 mm) .....	..	2	..	..
1	1333047	Fork (1372 mm) .....	..	2	..	..
1	1333048	Fork (1524 mm) .....	..	2	..	..
1	1333049	Fork (1829 mm) .....	..	2	..	..
1	1338097	Fork (1067 mm) .....	..	..	..	2
1	1338098	Fork (1219 mm) .....	..	..	..	2
1	1338138	Fork (902 mm) .....	2	..	..	..
1	1338140	Fork (1000 mm) .....	2	..	..	..
1	1338142	Fork (1100 mm) .....	2	..	..	..
1	1338144	Fork (1200 mm) .....	2	..	..	..
1	1338146	Fork (1397 mm) .....	2	..	..	..
1	1338148	Fork (1499 mm) .....	2	..	..	..
1	1362227	Fork (1803 mm) .....	2	..	..	..
1	1381815	Fork (2400 mm) .....	2	..	..	..
1	1362229	Fork (1194 mm) .....	..	..	2	..
1	1362231	Fork (1295 mm) .....	..	..	2	..
1	1362233	Fork (1499 mm) .....	..	..	2	..
1	1362235	Fork (1803 mm) .....	..	..	2	..

**FORK  
HOOK TYPE**

ITEM	PART NO.	DESCRIPTION	QTY			
			A	B	C	D
1	367419	Fork (914 mm) .....	2	..	..	..
1	367420	Fork (1067 mm) .....	2	..	..	..
1	367421	Fork (1219 mm) .....	2	..	..	..
1	367422	Fork (1372 mm) .....	2	..	..	..
1	367423	Fork (1524 mm) .....	2	..	..	..
1	367424	Fork (1829 mm) .....	2	..	..	..
2	1523732	Knob .....	1	1	1	1
3	1523741	Pin .....	..	..	1	..
3	1523737	Pin .....	1	1	..	1
4	1500784	Spring .....	1	1	..	1
4	1500786	Spring .....	..	..	1	..
5	1477166	Washer .....	1	1	..	1
6	1477237	Wedge .....	1	1	..	1
7	1523734	Retainer Pin (Not Illustrated) .....	1	1	1	1
	1523739	Latch Kit (Class III) (Includes Items 2-7) .....	1	1	..	1
	1523742	Latch Kit (Class IV) (Includes Items 2-4, 7) .....	..	..	1	..



## FORK (Figure 1-11) HOOK TYPE OPTIONAL



HP170534

**KEY:**

- A: Standard Taper (E3.50-4.00 XL, E4.50XLS)
- B: Standard Taper (E4.50XL) Attachment Carriage
- C: Standard Taper (E4.50-5.50XL)
- D: Full Bottom Taper (E3.50-4.00XL, E4.50XLS)

ITEM	PART NO.	DESCRIPTION	QTY			
			A	B	C	D
1	1378725	Fork (889 mm) .....	2	..	..	..
1	1378726	Fork (991 mm) .....	2	..	..	..
1	1378727	Fork (1092 mm) .....	2	..	..	..
1	1378728	Fork (1194 mm) .....	2	..	..	..
1	1378729	Fork (1397 mm) .....	2	..	..	..
1	1378730	Fork (1499 mm) .....	2	..	..	..
1	1378731	Fork (1803 mm) .....	2	..	..	..
1	1378732	Fork (914 mm) .....	2	..	..	..
1	1378733	Fork (1067 mm) .....	2	..	..	..
1	1378734	Fork (1219 mm) .....	2	..	..	..
1	1378735	Fork (1372 mm) .....	2	..	..	..
1	1378736	Fork (1524 mm) .....	2	..	..	..
1	1378737	Fork (1829 mm) .....	2	..	..	..
1	1378738	Fork (1219 mm) .....	..	2	..	..
1	1378739	Fork (1372 mm) .....	..	2	..	..
1	1378740	Fork (1524 mm) .....	..	2	..	..
1	1378741	Fork (1829 mm) .....	..	2	..	..
1	1381800	Fork (1219 mm) .....	..	..	2	..
1	1381801	Fork (1372 mm) .....	..	..	2	..
1	1381802	Fork (1524 mm) .....	..	..	2	..
1	1381803	Fork (1829 mm) .....	..	..	2	..

**FORK  
HOOK TYPE OPTIONAL**

ITEM	PART NO.	DESCRIPTION	QTY			
			A	B	C	D
1	1381806	Fork (1194 mm) .....	..	..	2	..
1	1381807	Fork (1295 mm) .....	..	..	2	..
1	1381809	Fork (1499 mm) .....	..	..	2	..
1	1381811	Fork (1800 mm) .....	..	..	2	..
1	1381816	Fork (1067 mm) .....	..	..	..	2
1	1381817	Fork (1207 mm) .....	..	..	..	2
2	1378766	Latch Kit (Class III) .....	1	1	1	1
3	1378763	Latch .....	1	1	1	1
4	1378761	Pin .....	1	1	1	1
5	1378762	Spring .....	1	1	1	1
6	302450	Pin .....	1	1	1	1

**BUY NOW**

**Then Instant Download  
the Complete Manual  
Thank you very much!**