

PARTS MANUAL

ELECTRIC

**A1.00-1.50XL
(C203)**

CUSTOMER EDITION

HYSTER

SECTIONS

| | |
|-----------|---|
| 1 | FRAME |
| 2 | ELECTRICAL SYSTEM |
| 3 | DRIVE UNIT |
| 4 | STEERING SYSTEM |
| 5 | BRAKE/ACCELERATOR SYSTEM |
| 6 | HYDRAULIC SYSTEM |
| 7 | MAST-TWO STAGE LIMITED FREE-LIFT |
| 8 | MAST-THREE STAGE FULL FREE-LIFT |
| 9 | MAST-TWO STAGE FULL FREE-LIFT |
| 10 | OPTIONS |
| 11 | NUMERICAL INDEX |

This Parts Manual is divided into 11 major sections which are listed above. Quick reference to these sections can be made by placing the right thumb on the tab of the desired section, bending the book back and thumbing the pages to the corresponding tab.

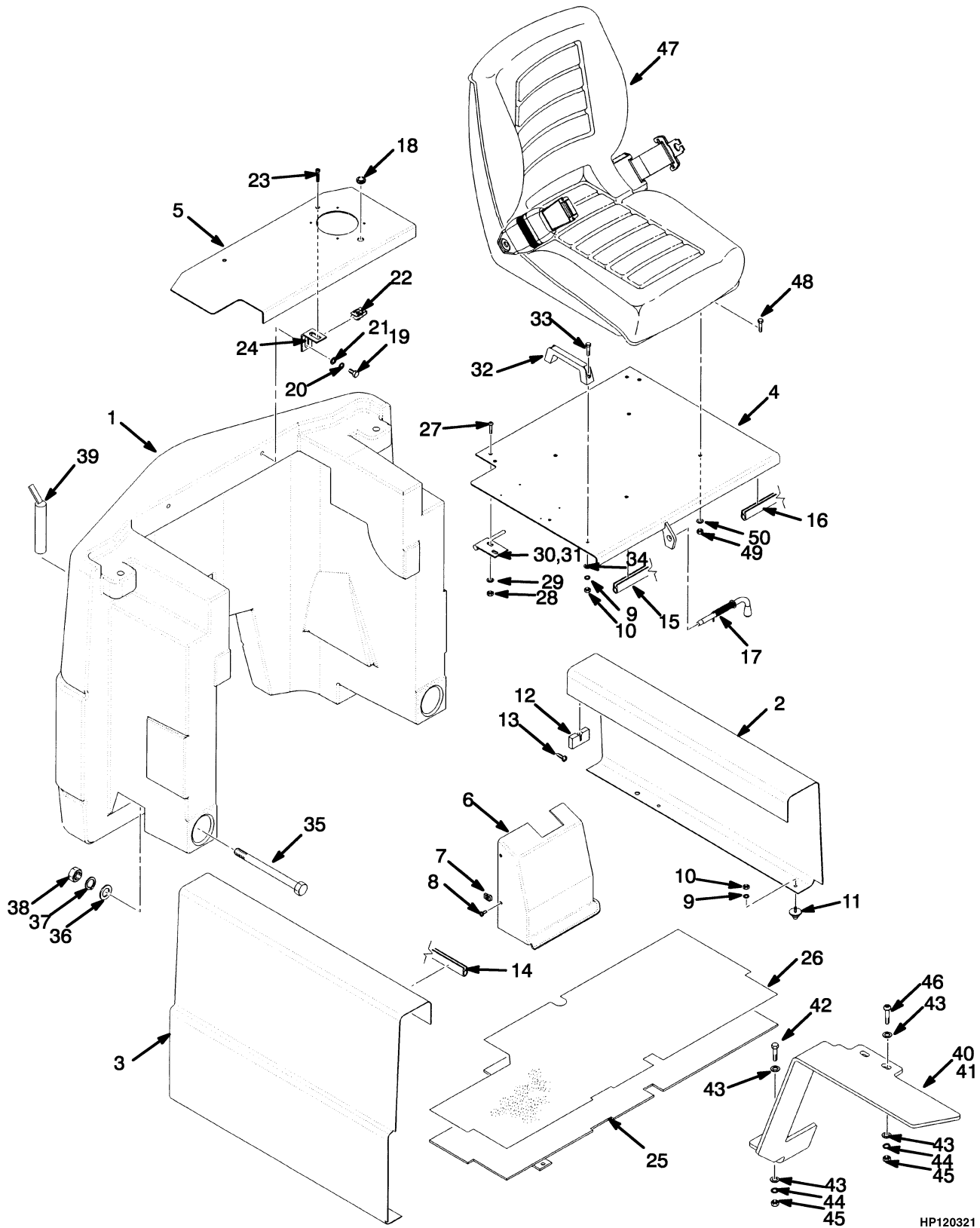
1

FRAME

**SECTION 1
FRAME**

| DESCRIPTION | PAGE |
|------------------------------|-------------|
| FRAME..... | 1-2 |
| LABELS..... | 1-7 |
| LOAD BACKREST EXTENSION..... | 1-16 |
| NON-SUSPENSION SEAT..... | 1-8 |
| OVERHEAD GUARD..... | 1-14 |
| SEMI-SUSPENSION SEAT..... | 1-10 |
| WITH ARM REST..... | 1-12 |

FRAME (Figure 1-1)



HP120321

FRAME

| ITEM | PART NO. | DESCRIPTION | QTY |
|------|-----------|-------------------------------|-----|
| 1 | 893412 | Counterweight (A1.50XL) | 1 |
| 1 | 893413 | Counterweight (A1.25XL) | 1 |
| 1 | 893414 | Counterweight (A1.00XL) | 1 |
| 2 | 878936 | Cover (LH Side) | 1 |
| 3 | 878935 | Cover (RH Side) | 1 |
| 4 | a 878877 | Hood | 1 |
| 4 | b 1499596 | Hood | 1 |
| 5 | a 878879 | Hood (Rear) | 1 |
| 5 | b 1502538 | Hood (Rear) | 1 |
| 6 | 893616 | Cover (Three Function) | 1 |
| 6 | 1493963 | Cover (Four Function) | 1 |
| 7 | 325182 | Nut | 3 |
| 8 | 302047 | Screw | 3 |
| 9 | 292680 | Lockwasher | 6 |
| 10 | 136687 | Nut | 6 |
| 11 | 363452 | Buffer | 4 |
| 12 | 363449 | Moulding | 4 |
| 13 | 134102 | Screw | 8 |
| 14 | 363594 | Edge Trim | 2 |
| 15 | 363593 | Edge Trim | 1 |
| 16 | 363592 | Edge Trim | 1 |
| 17 | 363599 | Bolt | 1 |
| 18 | 1361557 | Grommet | 1 |
| 19 | 292514 | Capscrew | 2 |
| 20 | 296420 | Washer | 4 |
| 21 | 292682 | Lockwasher | 4 |
| 22 | 269200 | Nut | 2 |
| 23 | 220395 | Screw | 2 |
| 24 | 1473620 | Bracket | 2 |
| 25 | 878894 | Floorplate | 1 |
| 26 | 878893 | Floormat | 1 |
| 27 | 296165 | Capscrew | 4 |
| 28 | 316835 | Nut | 4 |
| 29 | 320158 | Washer | 4 |
| 30 | 878883 | Hinge (LH) | 1 |
| 31 | 878884 | Hinge (RH) | 1 |
| 32 | 362030 | Handle | 2 |
| 33 | 292501 | Capscrew | 2 |
| 34 | 320156 | Washer | 2 |
| 35 | 292598 | Capscrew | 2 |
| 36 | 300750 | Washer | 2 |
| 37 | 292687 | Lockwasher | 2 |
| 38 | 292659 | Nut | 2 |
| 39 | 363509 | Tow Pin | 1 |
| 40 | 893509 | Fender (Left) | 1 |
| 41 | 893510 | Fender (Right) | 1 |
| 42 | 176640 | Capscrew | 2 |
| 43 | 320158 | Washer | 12 |
| 44 | 292681 | Lockwasher | 6 |
| 45 | 239503 | Nut | 4 |
| 46 | 296167 | Capscrew | 4 |

FRAME

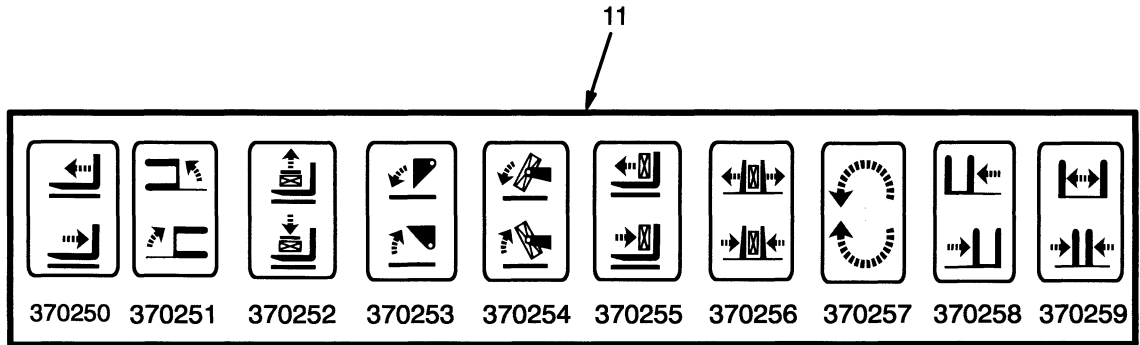
| ITEM | PART NO. | DESCRIPTION | QTY |
|------|----------|---|-----|
| 47 | 1460231 | Non-Suspension Seat (a Figure 1-3) | 1 |
| 47 | 2041645 | Semi-Suspension Seat (b Figure 1-4) | 1 |
| 48 | 136681 | Capscrew | 4 |
| 49 | 316835 | Nut | 4 |
| 50 | 320158 | Washer | 4 |

FOOTNOTES:

a ⇒ S/N C203A-2436Y

b S/N C203A-2437Y ⇒

LABELS



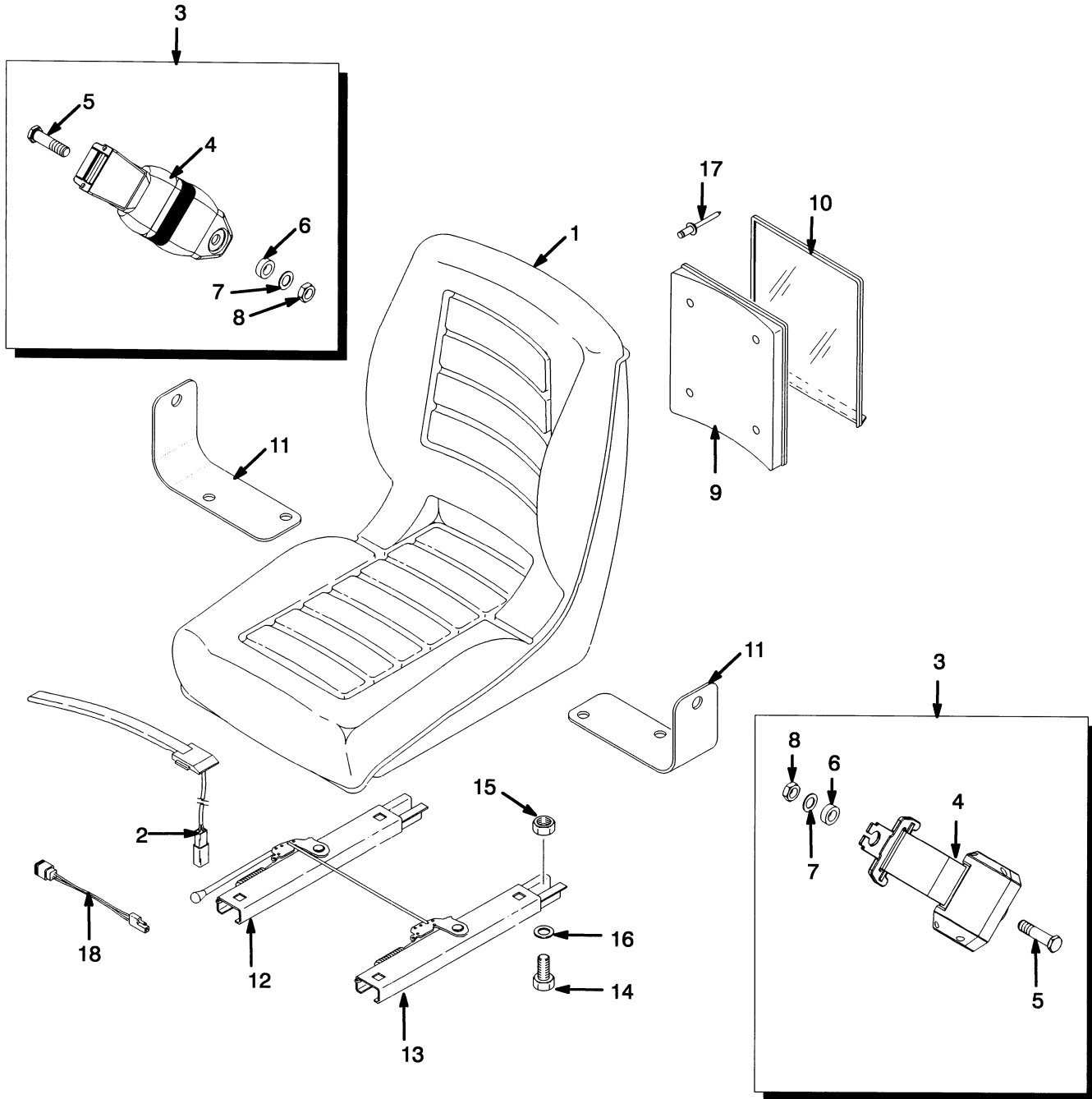
HP120323

| ITEM | PART NO. | DESCRIPTION | QTY |
|------|-------------|--|-----|
| 1 | 1339830 | Label (Mast Warning) | 2 |
| 2 | 1339832 | Label (Pinch Point) | 2 |
| 3 | 8514049 | Label (Battery Disconnect) | 1 |
| 4 | 1339828 | Label (No Riders) | 2 |
| 5 | 369573 | Label (Lift/Tilt)..... | 1 |
| 6 | 320037 | Label (Patent Plate)..... | 1 |
| 7 | 389688 | Cover | 1 |
| 8 | 222023 | Rivet..... | 4 |
| 9 | a | Nameplate | 1 |
| 10 | a | Nameplate | 1 |
| 11 | 370250 | Label (Auxiliary Function - Reach) | 1 |
| 11 | 370251 | Label (Auxiliary Function - Swing) | 1 |
| 11 | 370252 | Label (Auxiliary Function - Stabilizer) | 1 |
| 11 | 370253 | Label (Auxiliary Function - Dump/Scoop) | 1 |
| 11 | 370254 | Label (Auxiliary Function - Upender) | 1 |
| 11 | 370255 | Label (Auxiliary Function - Push/Pull)..... | 1 |
| 11 | 370256 | Label (Auxiliary Function - Clamp) | 1 |
| 11 | 370257 | Label (Auxiliary Function - Rotate) | 1 |
| 11 | 370258 | Label (Auxiliary Function - Side-Shift) | 1 |
| 11 | 370259 | Label (Auxiliary Function - Fork Spreader) | 1 |
| 12 | 1339674 | Label (Hyster) | 2 |
| 13 | 2026000 | Label (Model 1.50)..... | 2 |
| 13 | 893535 | Label (Model 1.00)..... | 2 |
| 13 | 893536 | Label (Model 1.25)..... | 2 |
| 14 | 2013578 | Strip | AR |
| 15 | 1480394 | Label (Hyster) (Counterweight)..... | 1 |
| 16 | 1357001 | Label (Park Brake Warning)..... | 1 |
| 17 | 893534 | Label (Hyster) | 2 |
| 18 | 1343276 | Label (Mast Warning) | 1 |
| 19 | 1373909 | Label (Operator Warning) | 1 |
| 20 | 1359588 | Label (Operator Restraint) | 2 |
| 21 | 1385099 | Label (Hydraulic Oil Fill)..... | 1 |

FOOTNOTES:

a Contact Your Local Hyster Dealer

NON-SUSPENSION SEAT (Figure 1-3)

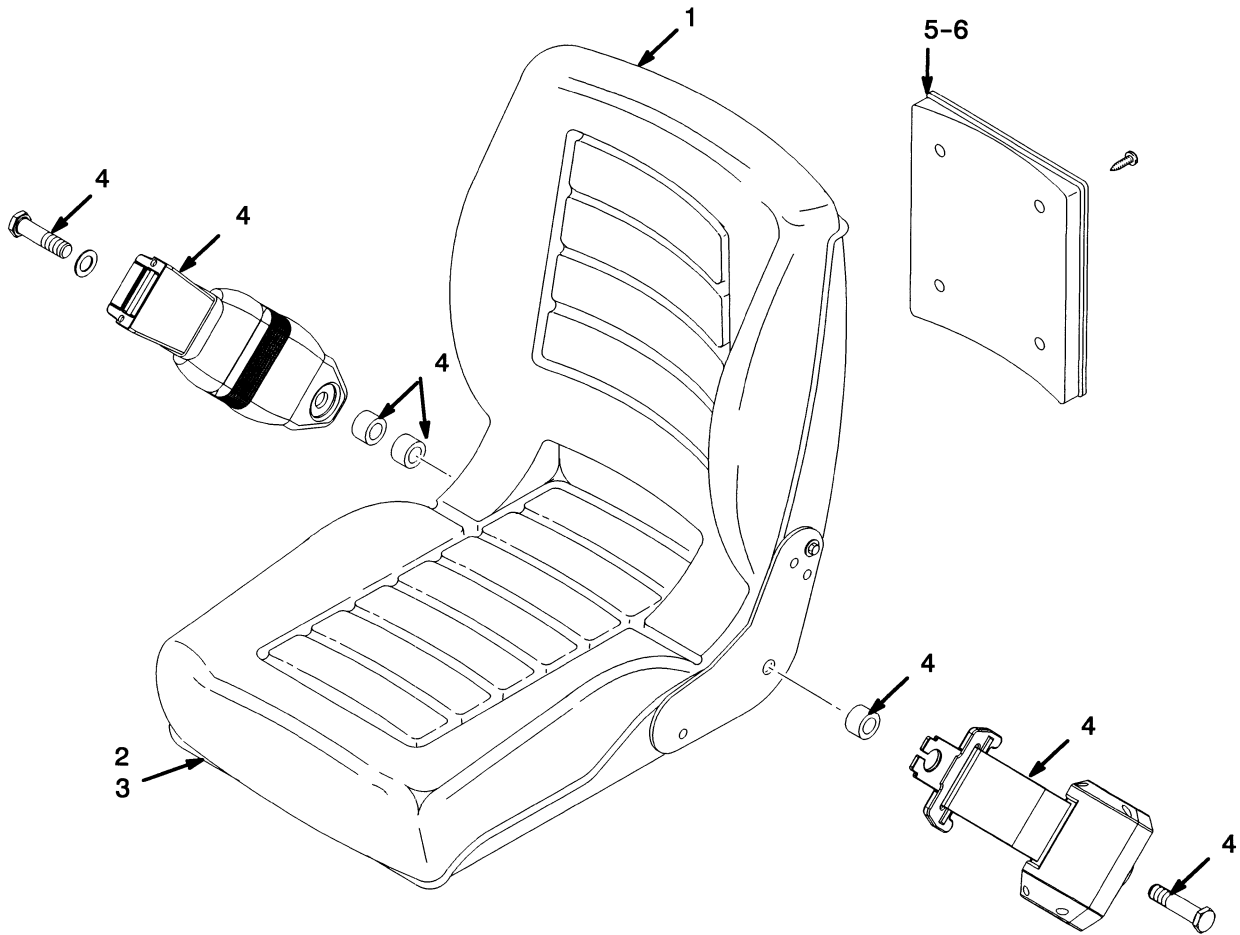


HP120324

NON-SUSPENSION SEAT

| ITEM | PART NO. | DESCRIPTION | QTY |
|------|----------|--------------------------|-----|
| | 1460231 | Non-Suspension Seat..... | 1 |
| 1 | 364911 | Seat..... | 1 |
| 2 | 2037311 | Switch Assembly | 1 |
| 3 | 1461081 | Seat Belt Kit..... | 1 |
| 4 | | Seat Belt | 1 |
| 5 | | Screw | 2 |
| 6 | | Washer..... | 2 |
| 7 | | Washer..... | 2 |
| 8 | | Nut | 2 |
| 9 | 335988 | Base | 1 |
| 10 | 335991 | Cover | 1 |
| 11 | 1470175 | Bracket | 1 |
| 12 | 1470176 | Seat Rail..... | 1 |
| 13 | 1470177 | Seat Rail..... | 1 |
| 14 | 136681 | Capscrew..... | 4 |
| 15 | 316835 | Nut | 4 |
| 16 | 320158 | Washer | 4 |
| 17 | | Rivet..... | 4 |
| 18 | 1460232 | Jumper..... | 1 |

SEMI-SUSPENSION SEAT (Figure 1-4)



HP120325

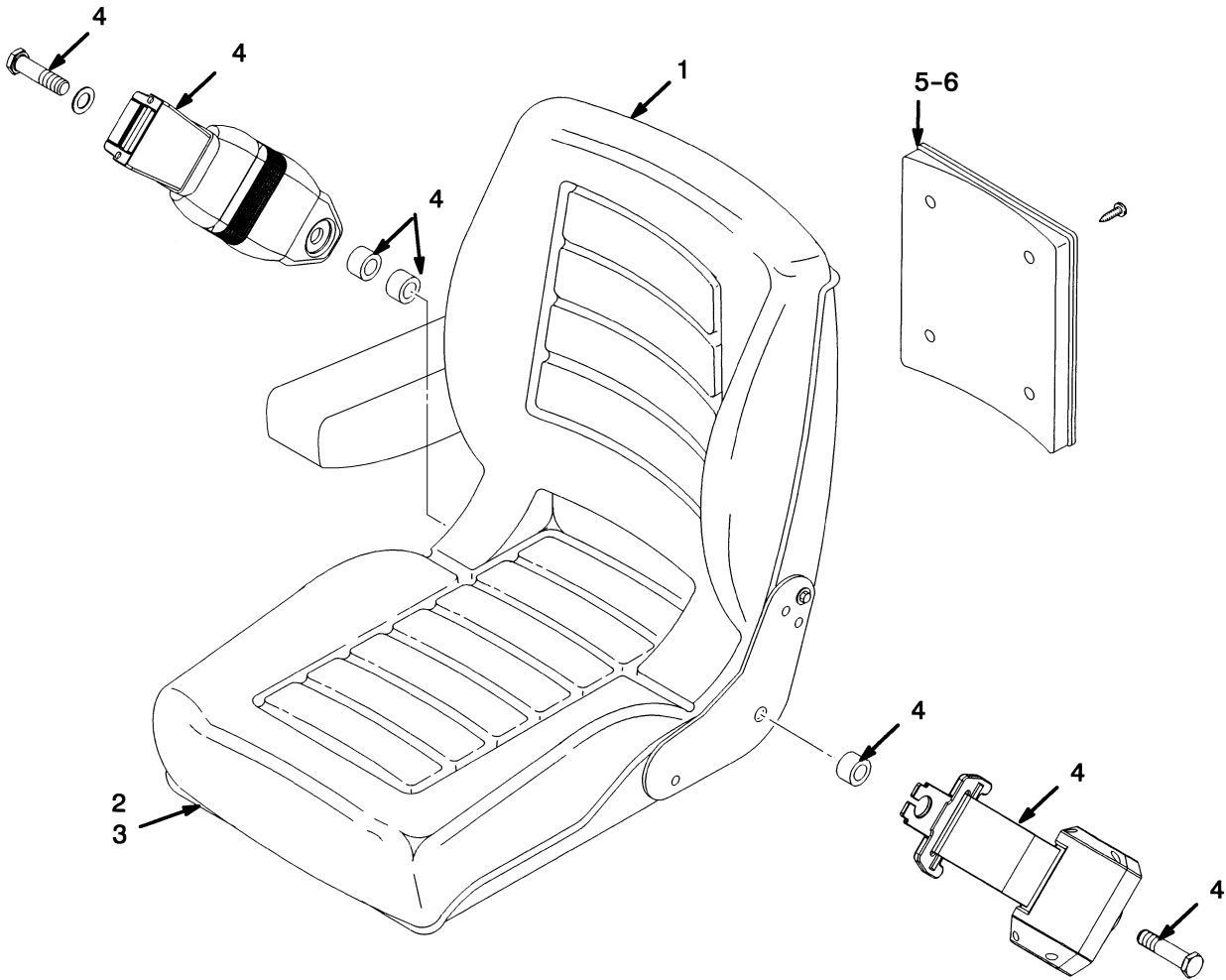
SEMI-SUSPENSION SEAT

| ITEM | PART NO. | DESCRIPTION | QTY |
|------|------------------|---------------------------------|-----|
| | 2041645 | Semi-Suspension Seat | 1 |
| 1 | 1480403 | Back Cushion | 1 |
| 2 | 1480404 | Seat Cushion (With Switch)..... | 1 |
| 3 | a 1480405 | Slider Kit | 1 |
| 4 | 1461081 | Seat Belt Kit..... | 1 |
| 5 | 335989 | Tube..... | 1 |
| 6 | 335991 | Cover | 1 |

FOOTNOTES:

a Not Illustrated

SEMI-SUSPENSION SEAT (Figure 1-5) WITH ARM REST



BP120031

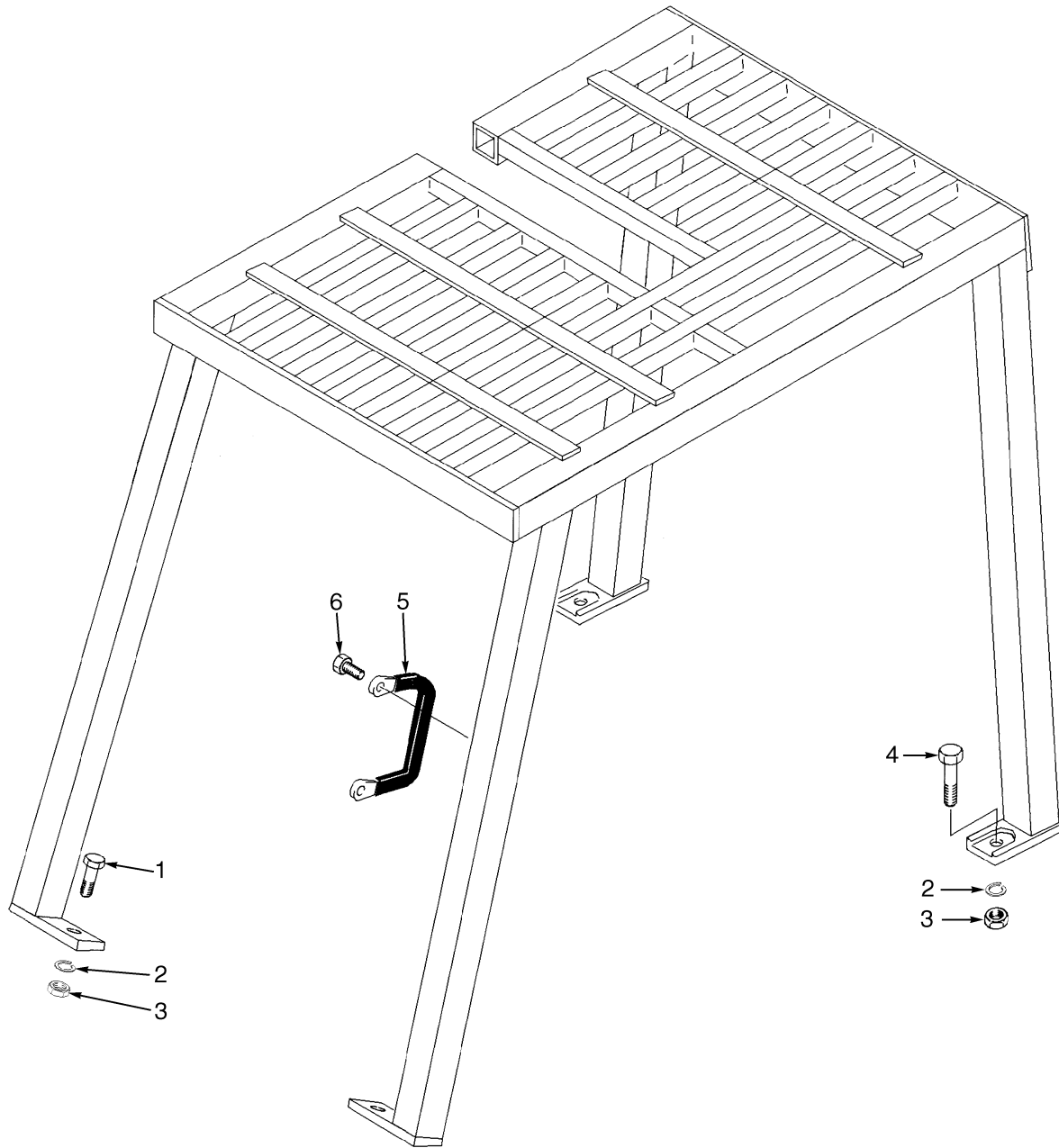
**SEMI-SUSPENSION SEAT
WITH ARM REST**

| ITEM | PART NO. | DESCRIPTION | QTY |
|------|------------------|---------------------------------|-----|
| | 2051298 | Semi-Suspension Seat | 1 |
| 1 | 1480403 | Back Cushion | 1 |
| 2 | 1480404 | Seat Cushion (With Switch)..... | 1 |
| 3 | a 1480405 | Slider Kit | 1 |
| 4 | 1461081 | Seat Belt Kit..... | 1 |
| 5 | 335989 | Tube..... | 1 |
| 6 | 335991 | Cover | 1 |
| 7 | 1492278 | Armrest Kit | 1 |
| | a 893818 | Ground Wire | 1 |

FOOTNOTES:

a Not Illustrated

OVERHEAD GUARD (Figure 1-6)

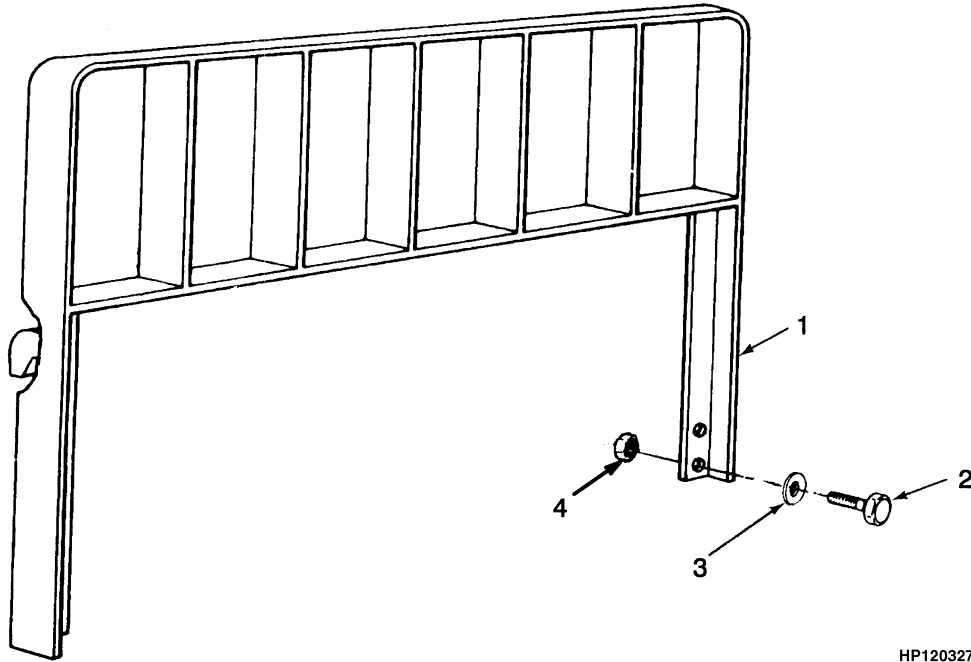


YP260288

OVERHEAD GUARD

| ITEM | PART NO. | DESCRIPTION | QTY |
|------|----------|----------------------|-----|
| | 893538 | Overhead Guard | 1 |
| 1 | 292528 | Capscrew | 4 |
| 2 | 292683 | Lockwasher | 4 |
| 3 | 216877 | Nut | 4 |
| 4 | 292534 | Capscrew | 2 |
| 5 | 1343647 | Handle | 1 |
| 6 | 329067 | Screw | 2 |
| | 1363917 | Plug | 2 |

LOAD BACKREST EXTENSION (Figure 1-7)



HP120327

| ITEM | PART NO. | DESCRIPTION | QTY |
|------|----------|-------------------------------|-----|
| 1 | 2013771 | Load Backrest Extension | 1 |
| 2 | 1353533 | Capscrew | 4 |
| 3 | 221771 | Washer | 4 |
| 3 | 296423 | Washer | 4 |
| 4 | 300937 | Locknut | 4 |

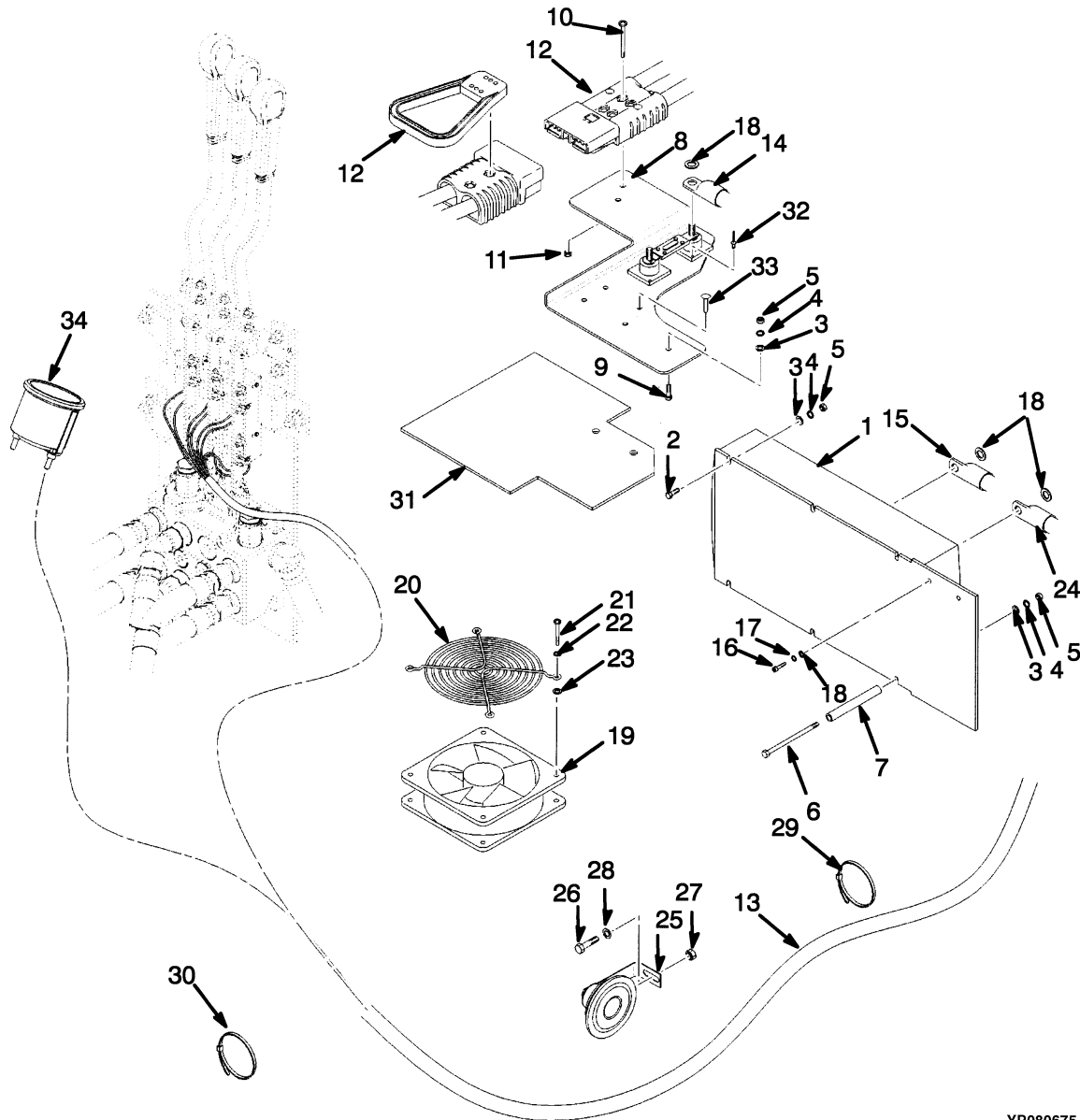
2

ELECTRICAL SYSTEM

SECTION 2 ELECTRICAL SYSTEM

| DESCRIPTION | PAGE |
|------------------------|------|
| CONTACTOR | |
| BY-PASS | |
| ⇒S/N C203A-2437Y | 2-13 |
| FORWARD/REVERSE | |
| ⇒S/N C203A-2436Y | 2-10 |
| REGENERATIVE BRAKING | |
| ⇒S/N C203A-2436Y | 2-14 |
| CONTACTOR PANEL | |
| ⇒S/N C203A-2436Y | 2-8 |
| ELECTRICAL SYSTEM | |
| ⇒S/N C203A-2436Y | 2-2 |
| S/N C203A-2437Y⇒ | 2-4 |
| LINE CONTACTOR | |
| ⇒S/N C203A-2436Y | 2-12 |
| WIRE HARNESS | |
| MAIN | |
| ⇒S/N C203A-2436Y | 2-16 |
| S/N C203A-2437Y⇒ | 2-18 |

ELECTRICAL SYSTEM (Figure 2-1) (⇒S/N C203A-2436Y)

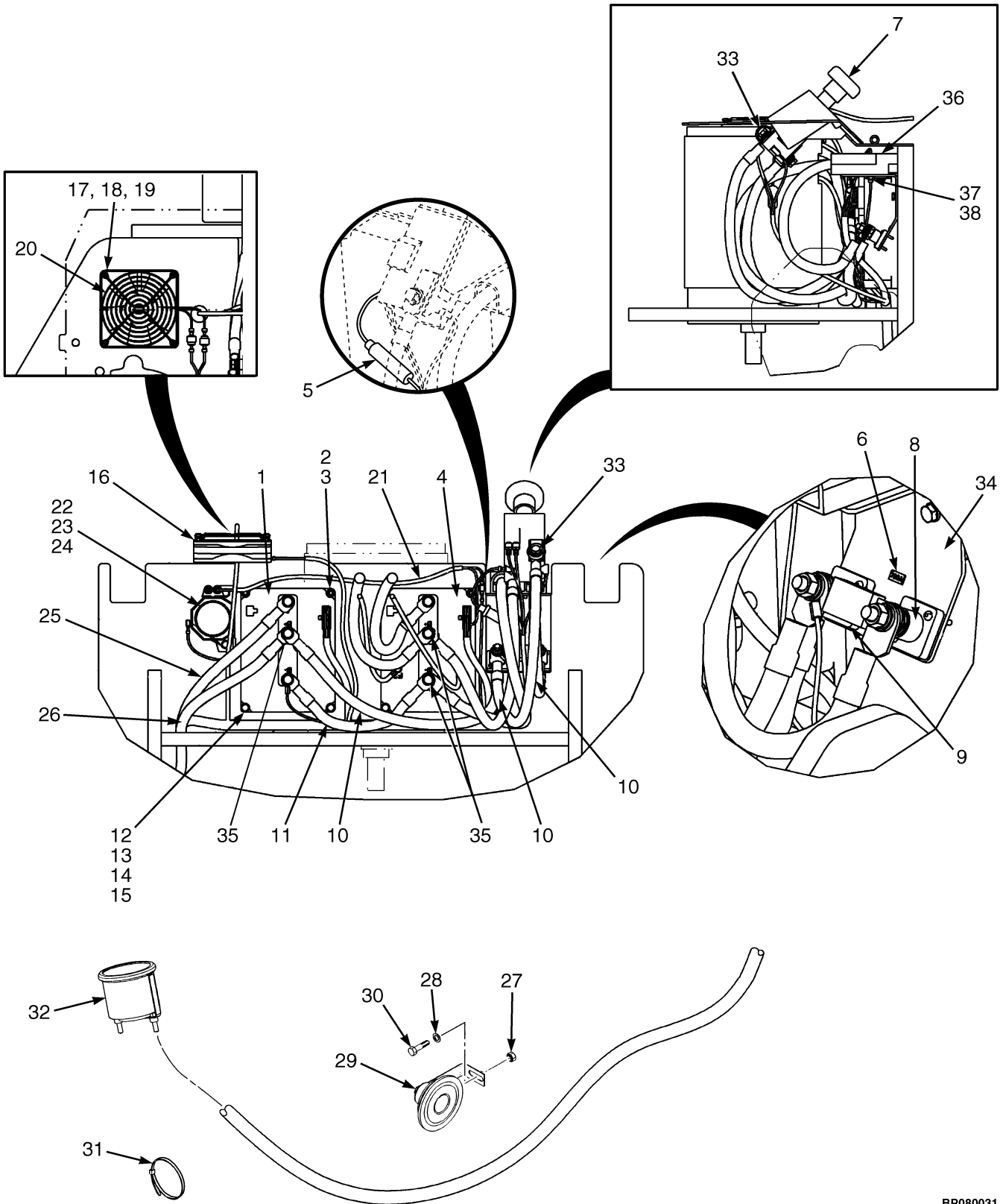


YP080675

ELECTRICAL SYSTEM
(⇒S/N C203A-2436Y)

| ITEM | PART NO. | DESCRIPTION | QTY |
|------|----------|---|-----|
| 1 | 893422 | Control Panel | 1 |
| 1 | 1475198 | Contactor Panel..... | 1 |
| 1 | 1475196 | Controller | 1 |
| 2 | 296477 | Capscrew..... | 3 |
| 3 | 320156 | Washer | 9 |
| 4 | 292680 | Lockwasher..... | 9 |
| 5 | 136687 | Nut | 6 |
| 6 | 1469997 | Capscrew..... | 3 |
| 7 | 1361410 | Spacer | 3 |
| 8 | 878965 | Bracket..... | 1 |
| 9 | 2303291 | Capscrew..... | 3 |
| 10 | 302051 | Screw..... | 2 |
| 11 | 316834 | Nut | 2 |
| 12 | 1470016 | Battery Connector..... | 2 |
| 12 | 1375598 | Handle | 2 |
| 13 | 1470020 | Wire Harness..... | 1 |
| 14 | 1470017 | Cable | 1 |
| 15 | 1470018 | Cable | 1 |
| 16 | 136749 | Capscrew..... | 2 |
| 17 | 292681 | Lockwasher..... | 2 |
| 18 | 320157 | Washer | 6 |
| 19 | 1359106 | Fan..... | 1 |
| 20 | 1306267 | Guard..... | 1 |
| 21 | 302021 | Screw..... | 4 |
| 22 | 296377 | Washer | 4 |
| 23 | 197066 | Washer | 4 |
| 24 | 1470019 | Cable | 1 |
| 25 | 893621 | Horn..... | 1 |
| 26 | 176640 | Capscrew..... | 2 |
| 27 | 313828 | Nut | 1 |
| 28 | 320158 | Washer | 1 |
| 29 | 2033612 | Strap Clamp..... | 4 |
| 30 | 2004005 | Strap Clamp..... | 4 |
| 31 | 1474322 | Cover | 1 |
| 32 | 1399815 | Rivet..... | 2 |
| 33 | 150797 | Rivet..... | 4 |
| 34 | 1470421 | Battery Discharge Indicator and Hourmeter | 1 |
| 35 | 2053660 | Ignition Switch | 1 |
| 35 | 2035831 | Key | 1 |

ELECTRICAL SYSTEM (Figure 2-2) (S/N C203A-2437Y⇒)



BP080031

ELECTRICAL SYSTEM
(S/N C203A-2437Y⇒)

| ITEM | PART NO. | DESCRIPTION | QTY |
|------|-----------|--|-----|
| 1 | 1502766 | Pump Controller..... | 1 |
| 2 | 293795 | Capscrew..... | 4 |
| 3 | 292680 | Lockwasher..... | 10 |
| 4 | 1502765 | Traction Controller..... | 1 |
| 5 | 1502875 | Fuse (7 Amp)..... | 1 |
| 6 | 1475201 | Label (7 Amp)..... | 1 |
| 7 | 1498812 | Battery Disconnect Switch..... | 1 |
| 8 | 1475200 | Terminal Assembly | 1 |
| 8 | 150797 | Rivet..... | 4 |
| 9 | 1475199 | Fuse (750 Amp)..... | 1 |
| 9 | 1475202 | Label (750 Amp)..... | 1 |
| 10 | 1502803 | Cable | 3 |
| 11 | 1319552 | Cable | 1 |
| 12 | 320156 | Washer | 6 |
| 13 | 292680 | Lockwasher..... | 10 |
| 14 | 1367822 | Capscrew..... | 4 |
| 15 | 1502718 | Spacer | 4 |
| 16 | 1359106 | Fan..... | 1 |
| 17 | 296377 | Washer | 4 |
| 18 | 197066 | Washer | 4 |
| 19 | 302021 | Screw..... | 4 |
| 20 | 1306267 | Guard..... | 1 |
| 21 | a 1503632 | Wire Harness..... | 1 |
| 22 | a 1350733 | Alarm (87 dBA)..... | 1 |
| 23 | a 292501 | Capscrew..... | 2 |
| 24 | a 292680 | Lockwasher..... | 2 |
| 24 | a 320156 | Washer | 2 |
| 25 | 1502636 | Cable | 1 |
| 26 | 1502639 | Cable | 1 |
| 27 | 313828 | Nut | 1 |
| 28 | 320158 | Washer | 1 |
| 29 | 893621 | Horn..... | 1 |
| 30 | 176640 | Capscrew..... | 2 |
| 31 | 2004005 | Strap Clamp..... | AR |
| 31 | 2033612 | Strap Clamp..... | AR |
| 32 | 1470421 | Battery Discharge Indicator and Hourmeter..... | 1 |
| 33 | 204223 | Boot | 1 |
| 34 | 1499065 | Bracket..... | 1 |
| 34 | 292500 | Capscrew..... | 2 |
| 35 | 136681 | Capscrew..... | 3 |
| 36 | 1502641 | Battery Connector Assembly (SBE) | 1 |
| 36 | 1585242 | Battery Connector Assembly (DIN) | 1 |
| 37 | 292503 | Capscrew (SBE)..... | 2 |
| 37 | 292505 | Capscrew (DIN) | 2 |
| 38 | 316834 | Nut..... | 2 |
| | 1497563 | Wire Harness..... | 1 |
| | 379902 | Ignition Switch | 1 |
| | 1337197 | Key Set..... | 1 |

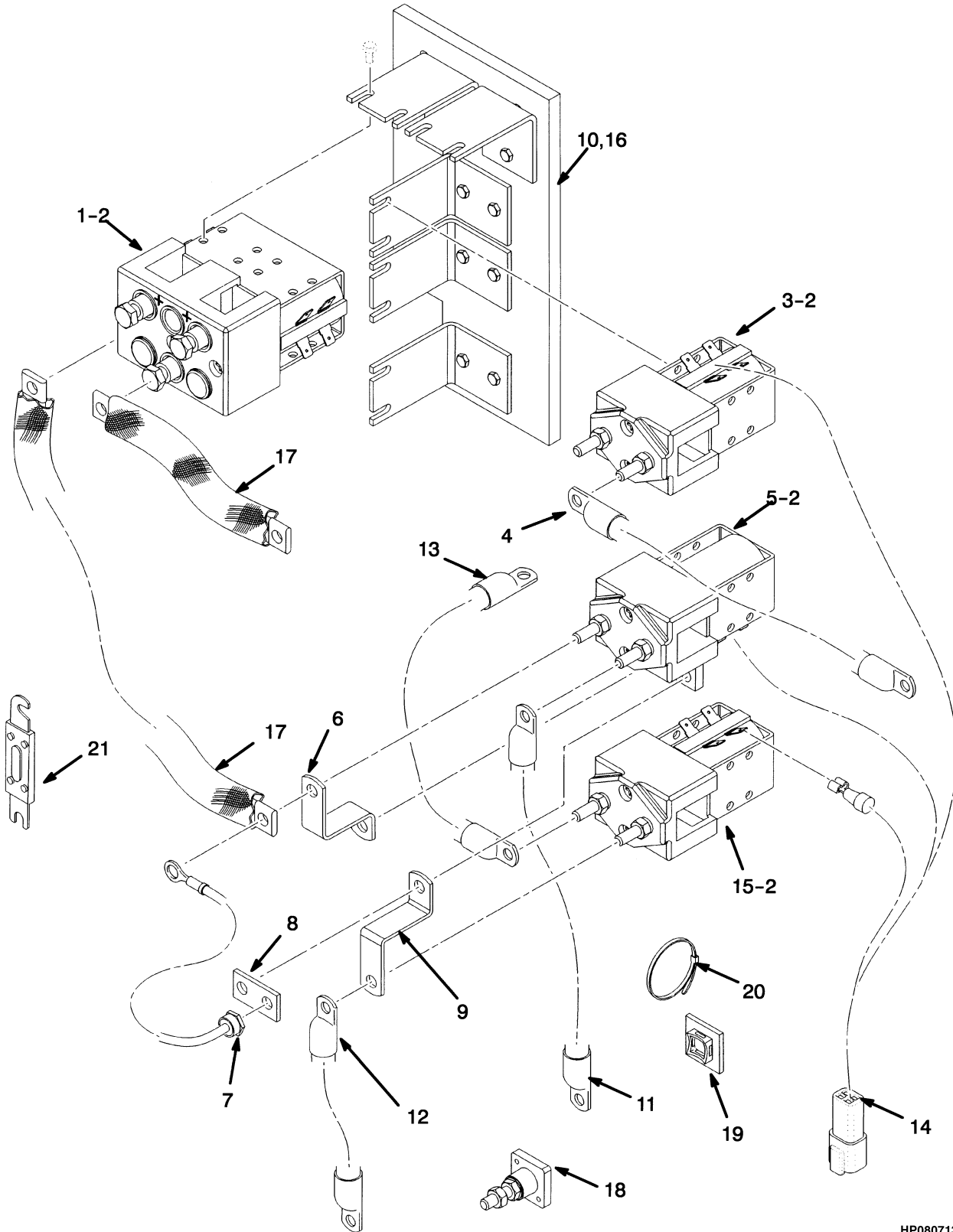
ELECTRICAL SYSTEM (S/N C203A-2437Y⇒)

| ITEM | PART NO. | DESCRIPTION | QTY |
|------|----------|--|-----|
| | 1198757 | Silicon Grease | AR |
| | 1497561 | Controller Kit (Includes Items 1, 4-6, 8-9)..... | 1 |

FOOTNOTES:

a Optional

CONTACTOR PANEL (Figure 2-3) (⇒S/N C203A-2436Y)

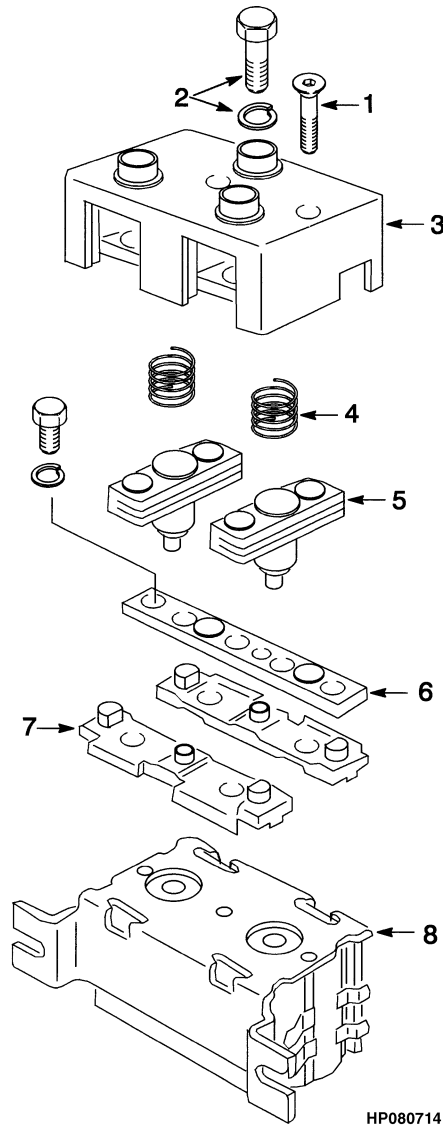


HP080713

CONTACTOR PANEL
(⇒S/N C203A-2436Y)

| ITEM | PART NO. | DESCRIPTION | QTY |
|------|----------|--|-----|
| | 1475198 | Contacteur Panel | 1 |
| 1 | 1386023 | Contacteur (Forward/Reverse) | 1 |
| 2 | 1475215 | Contacteur Mounting Kit..... | 5 |
| 3 | 1475216 | Contacteur | 1 |
| 4 | 288134 | Power Cable | 1 |
| 5 | 1475218 | Contacteur (Regenerative Braking)..... | 1 |
| 6 | 1475219 | Link..... | 1 |
| 7 | 1475221 | Diode Assembly | 1 |
| 8 | 1475220 | Link..... | 1 |
| 9 | 1475222 | Link..... | 1 |
| 10 | 1475223 | Plate | 1 |
| 11 | 1475224 | Cable | 1 |
| 12 | 1475225 | Cable | 1 |
| 13 | 1475226 | Cable | 1 |
| 14 | 1475227 | Wire Harness | 1 |
| 15 | 1475228 | Contacteur (By-Pass) | 1 |
| 16 | 1475229 | Label..... | 1 |
| 17 | 308132 | Connector..... | 2 |
| 18 | 1475200 | Terminal Assembly | 2 |
| 19 | 1319557 | Holder | 1 |
| 20 | 1319558 | Strap | 1 |
| 21 | 1475199 | Fuse..... | 1 |

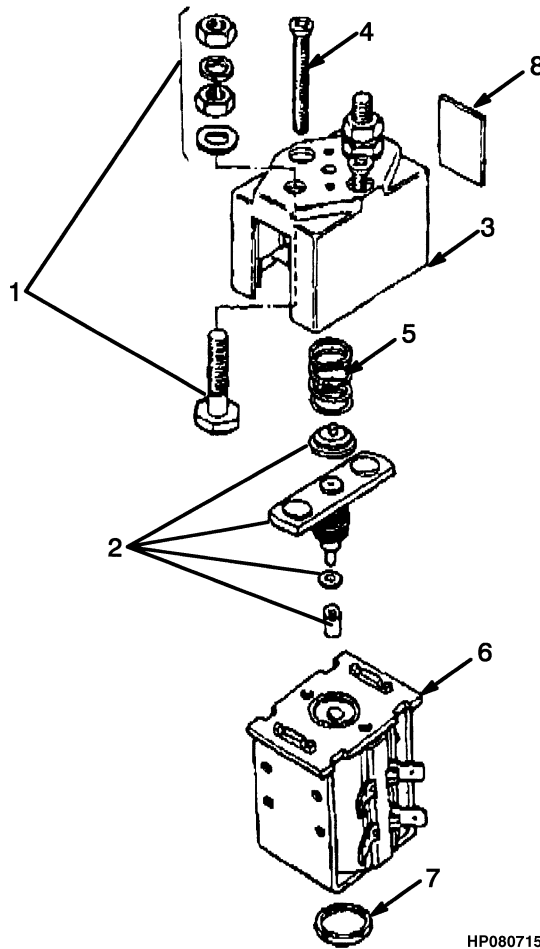
CONTACTOR (Figure 2-4) FORWARD/REVERSE (⇒S/N C203A-2436Y)



**CONTACTOR
FORWARD/REVERSE
(⇒S/N C203A-2436Y)**

| ITEM | PART NO. | DESCRIPTION | QTY |
|------|----------|------------------------|-----|
| | 1386023 | Contactor | 1 |
| 1 | 1314299 | Screw | 3 |
| 2 | 2310657 | Hardware Kit..... | 1 |
| 3 | 2309427 | Cover..... | 1 |
| 4 | 1386064 | Spring..... | 2 |
| 5 | 1314297 | Contact (Moving) | 1 |
| 6 | 2309677 | Contact (Fixed)..... | 1 |
| 7 | 2304487 | Insulator..... | 2 |
| 8 | 1386015 | Coil Assembly..... | 1 |

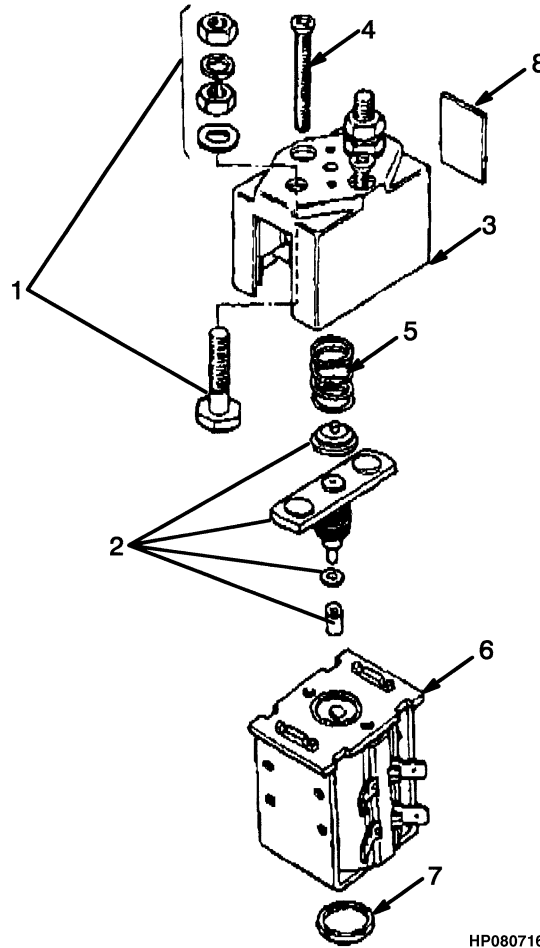
LINE CONTACTOR (Figure 2-5) (⇒S/N C203A-2436Y)



HP080715

| ITEM | PART NO. | DESCRIPTION | QTY |
|------|----------|---------------------------|-----|
| | 1475216 | Contactors | 1 |
| 1 | 1330698 | Contact (Fixed) | 2 |
| 2 | 1315469 | Contact (Moving) | 1 |
| 3 | 1475232 | Cover (With Magnet) | 1 |
| 4 | 1314299 | Screw | 2 |
| 5 | 1475234 | Return Spring | 1 |
| 6 | 1315562 | Coil and Frame | 1 |
| 7 | 1454122 | End Cap | 1 |
| 8 | 1315472 | Shield | 2 |

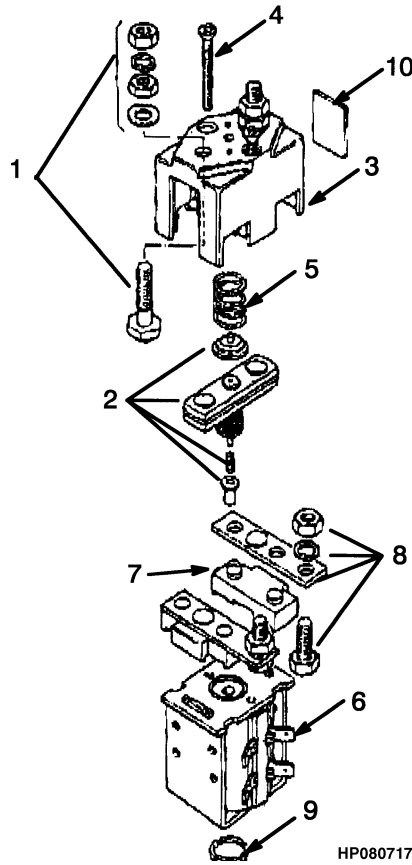
**CONTACTOR (Figure 2-6)
BY-PASS
(⇒S/N C203A-2437Y)**



HP080716

| ITEM | PART NO. | DESCRIPTION | QTY |
|------|----------|---------------------------|-----|
| | 1475228 | Contact (By-Pass) | 1 |
| 1 | 1330698 | Contact (Fixed) | 2 |
| 2 | 1315469 | Contact (Moving) | 1 |
| 3 | 1475232 | Cover (With Magnet) | 1 |
| 4 | 1314299 | Screw | 2 |
| 5 | 306270 | Spring | 1 |
| 6 | 1315550 | Coil and Frame | 1 |
| 7 | 1454122 | End Cap | 1 |
| 8 | 1315472 | Shield | 2 |

CONTACTOR (Figure 2-7) REGENERATIVE BRAKING (⇒S/N C203A-2436Y)



| ITEM | PART NO. | DESCRIPTION | QTY |
|------|----------|---------------------------|-----|
| | 1475218 | Contactors | 1 |
| 1 | 1330698 | Contact (Fixed) | 2 |
| 2 | 1314297 | Contact (Moving) | 1 |
| 3 | 1322696 | Cover (With Magnet) | 1 |
| 4 | 1314299 | Screw | 2 |
| 5 | 1475242 | Spring | 1 |
| 6 | 1315550 | Coil and Frame | 1 |
| 7 | 1315464 | Insulator | 2 |
| 8 | 1315465 | Contact | 2 |
| 9 | 1454122 | End Cap | 1 |
| 10 | 1315468 | Shield | 2 |

BUY NOW

**Then Instant Download
the Complete Manual
Thank you very much!**