

# **PARTS MANUAL**

---

## **CHALLENGER**

**H1.50-1.75XM, H2.00XMS  
(E001)**

**CUSTOMER EDITION**

---

# ***HYSTER***

**SECTIONS**

<b>1</b>	<b>FRAME</b>
<b>2</b>	<b>ENGINES</b>
<b>3</b>	<b>FUEL SYSTEM</b>
<b>4</b>	<b>ELECTRICAL SYSTEM</b>
<b>5</b>	<b>TRANSMISSION</b>
<b>6</b>	<b>STEERING SYSTEM</b>
<b>7</b>	<b>BRAKE SYSTEM</b>
<b>8</b>	<b>HYDRAULIC SYSTEM</b>
<b>9</b>	<b>MAST-TWO STAGE LIMITED FREE-LIFT</b>
<b>10</b>	<b>MAST-TWO STAGE FULL FREE-LIFT</b>
<b>11</b>	<b>MAST-THREE STAGE FULL FREE-LIFT</b>
<b>12</b>	<b>OPTIONS</b>
<b>13</b>	<b>NUMERICAL INDEX</b>

This Parts Manual is divided into 13 major sections which are listed above. Quick reference to these sections can be made by placing the right thumb on the tab of the desired section, bending the book back and thumbing the pages to the corresponding tab.

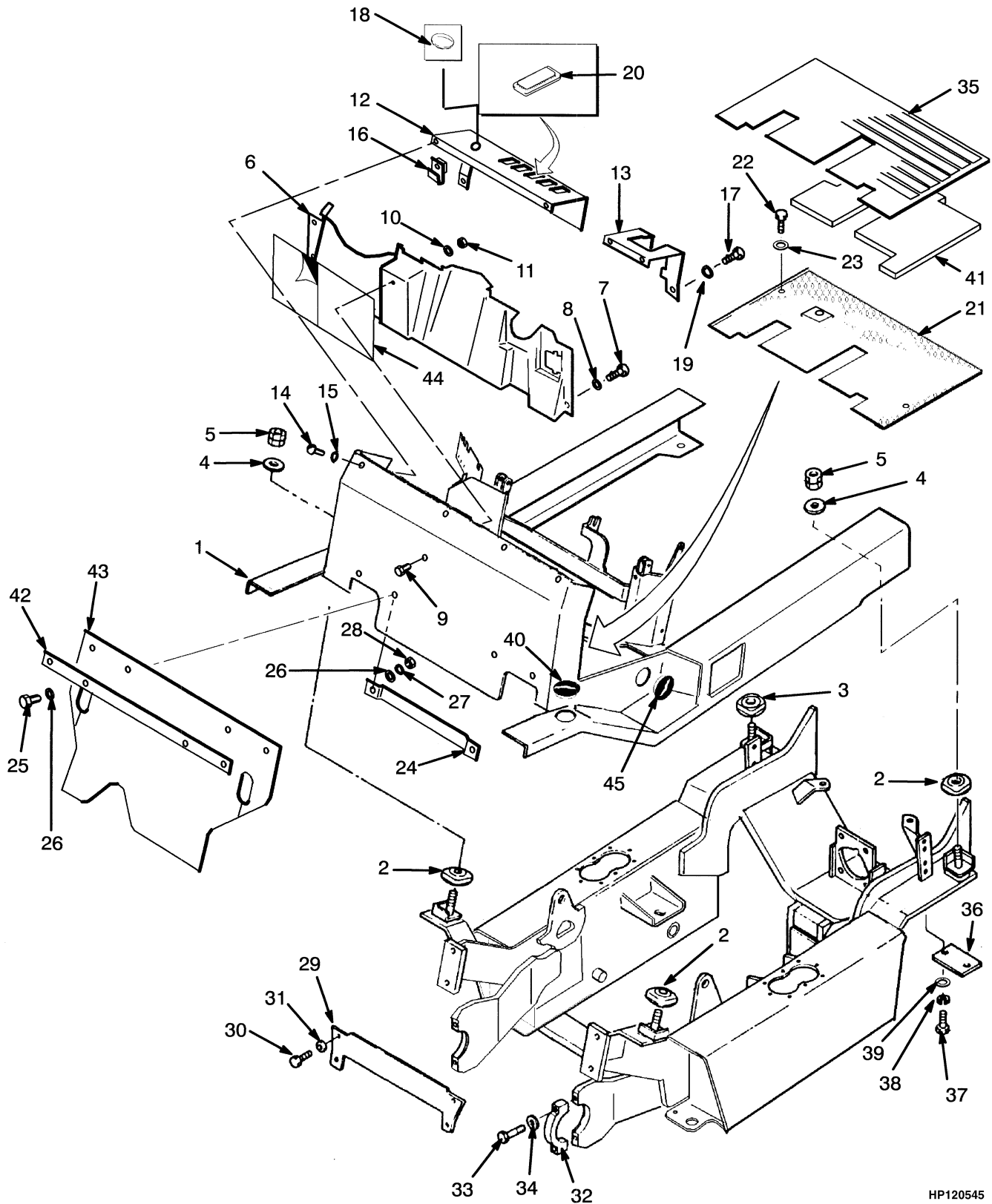
**1**

**FRAME**

**SECTION 1**  
**FRAME**

DESCRIPTION	PAGE
COUNTERWEIGHT .....	1-22
ENGINE COVER .....	1-8
FENDER.....	1-4
FORKS	
POLISHED WITH FULL BOTTOM TAPER .....	1-31
STANDARD.....	1-30
FRAME AND FLOORPLATE .....	1-2
LABELS.....	1-19
LOAD BACKREST EXTENSION.....	1-28
NOISE REDUCTION	
ENGINE COVER .....	1-26
FRAME .....	1-24
OVERHEAD GUARD.....	1-6
SEAT	
NON-SUSPENSION .....	1-16
SUSPENSION	
SHEET 1 OF 2 .....	1-12
SHEET 2 OF 2 .....	1-14

## FRAME AND FLOORPLATE (Figure 1-1)



HP120545

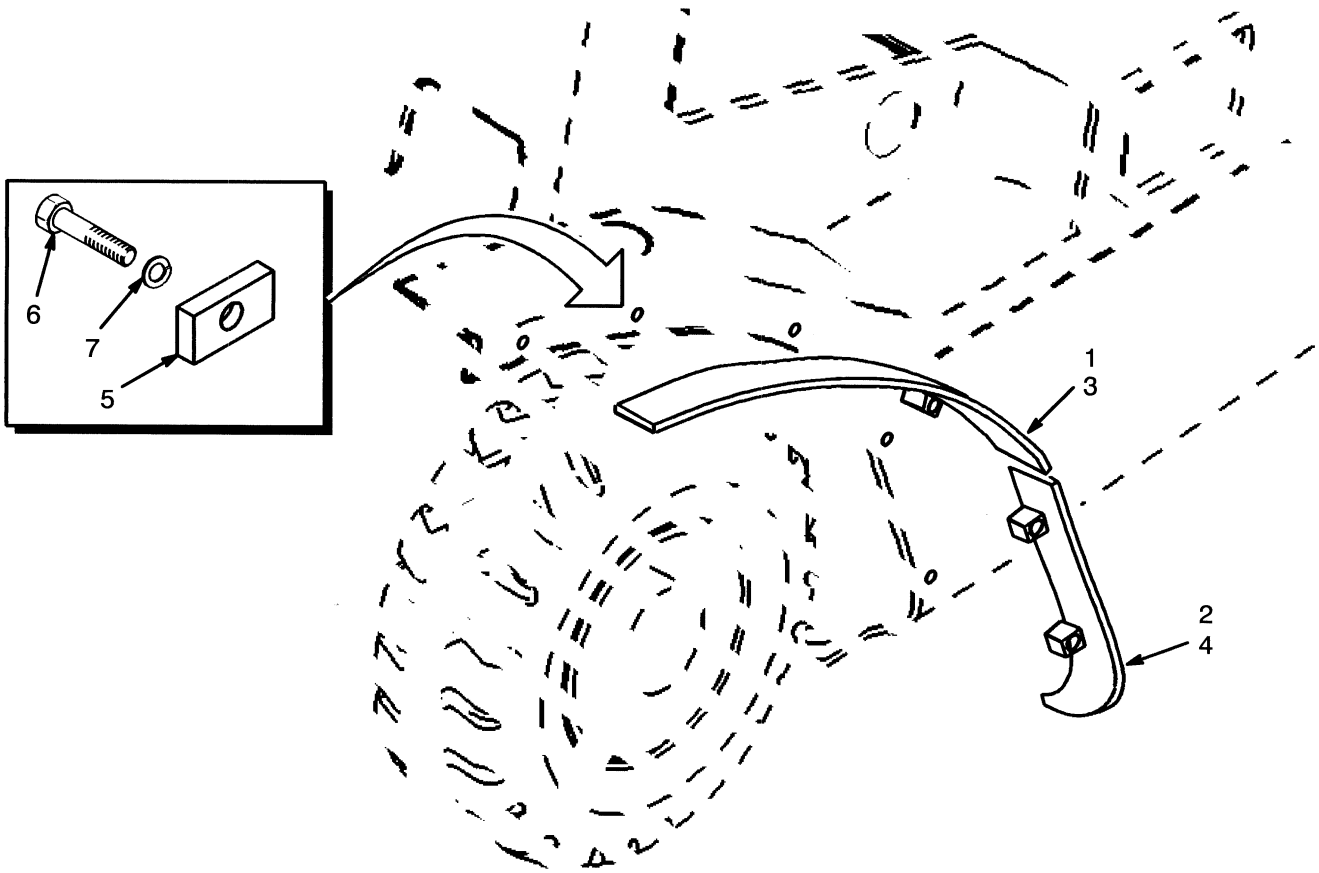
**FRAME AND FLOORPLATE**

ITEM	PART NO.	DESCRIPTION	QTY
1	1477470	Operator Module (LPG) .....	1
1	2041655	Operator Module (Diesel) .....	1
2	2021234	Insulator (Rubber).....	3
3	2021235	Insulator (Rubber).....	1
4	2021238	Washer .....	4
5	2021237	Nut .....	4
6	2021232	Cover .....	1
7	316678	Screw.....	4
8	320157	Washer .....	4
9	292501	Capscrew.....	1
10	320156	Washer .....	1
11	1359600	Nut .....	1
12	1385097	Panel (RH) .....	1
13	2021499	Panel (LH).....	1
14	369242	Capscrew.....	4
15	292681	Lockwasher.....	4
16	1350282	Retainer .....	4
17	316678	Screw.....	2
18	2022544	Cap (Choke Cable) (Diesel).....	1
19	292681	Lockwasher.....	2
20	376949	Cover .....	AR
21	2023789	Floorplate.....	1
22	136681	Capscrew.....	2
23	15175	Washer .....	2
24	2021231	Bracket.....	1
25	316678	Screw.....	2
26	320157	Washer .....	4
27	292681	Lockwasher.....	2
28	239503	Nut .....	2
29	2021665	Plate .....	1
30	2022636	Capscrew.....	4
31	296426	Washer (Hardened) .....	4
32	2021833	Cap .....	2
33	292533	Capscrew.....	4
34	2021834	Washer .....	4
35	2022821	Floormat .....	1
36	2021900	Cover .....	2
37	136985	Capscrew.....	4
38	292682	Lockwasher.....	4
39	320159	Washer .....	4
40	a 2021395	Cap .....	2
41	2022822	Barrier.....	1
41	a 2045369	Pad .....	1
42	a 2023813	Plate .....	1
43	a 2022029	Cover (Front).....	1
44	2022798	Label (Cowl Cover) .....	1
45	a 2022803	Cap (Tilt Pin).....	2

**FOOTNOTES:**

a Noise Reduction

## FENDER (Figure 1-2)



HP120546

**FENDER**

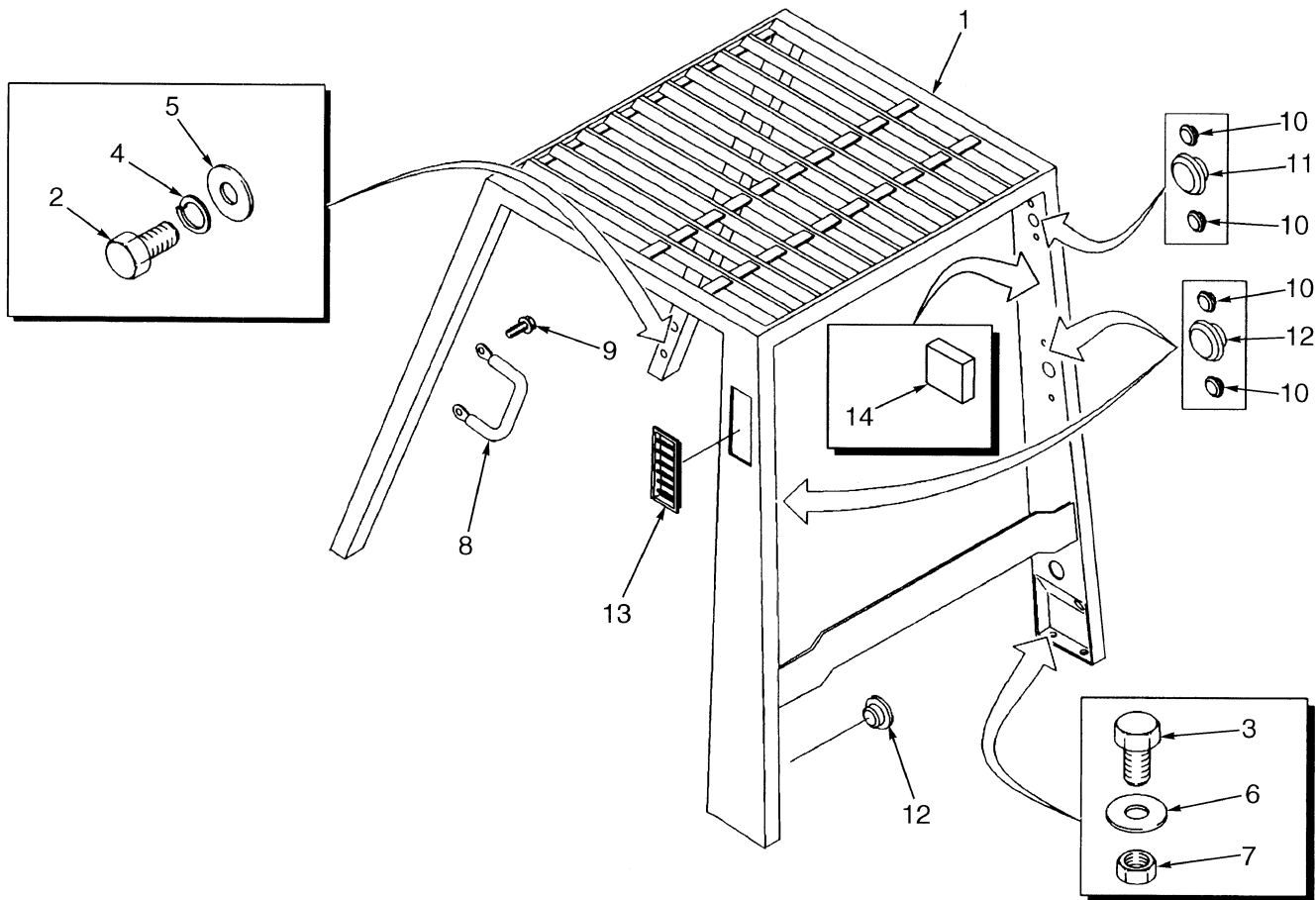
ITEM	PART NO.	DESCRIPTION	QTY
1	a 2021869	Fender (Upper) (LH) .....	1
1	a 2021870	Fender (Upper) (RH).....	1
2	a 2021871	Fender (LH) .....	1
2	a 2021872	Fender (RH).....	1
3	b 2021873	Fender (LH) .....	1
3	b 2021874	Fender (RH).....	1
4	b 2021875	Fender (LH) .....	1
4	b 2021876	Fender (RH).....	1
5	1347144	Bar .....	5
6	136985	Capscrew.....	5
7	292682	Lockwasher.....	5

**FOOTNOTES:**

- a Intermediate Track
- b Wide Track



## OVERHEAD GUARD (Figure 1-3)

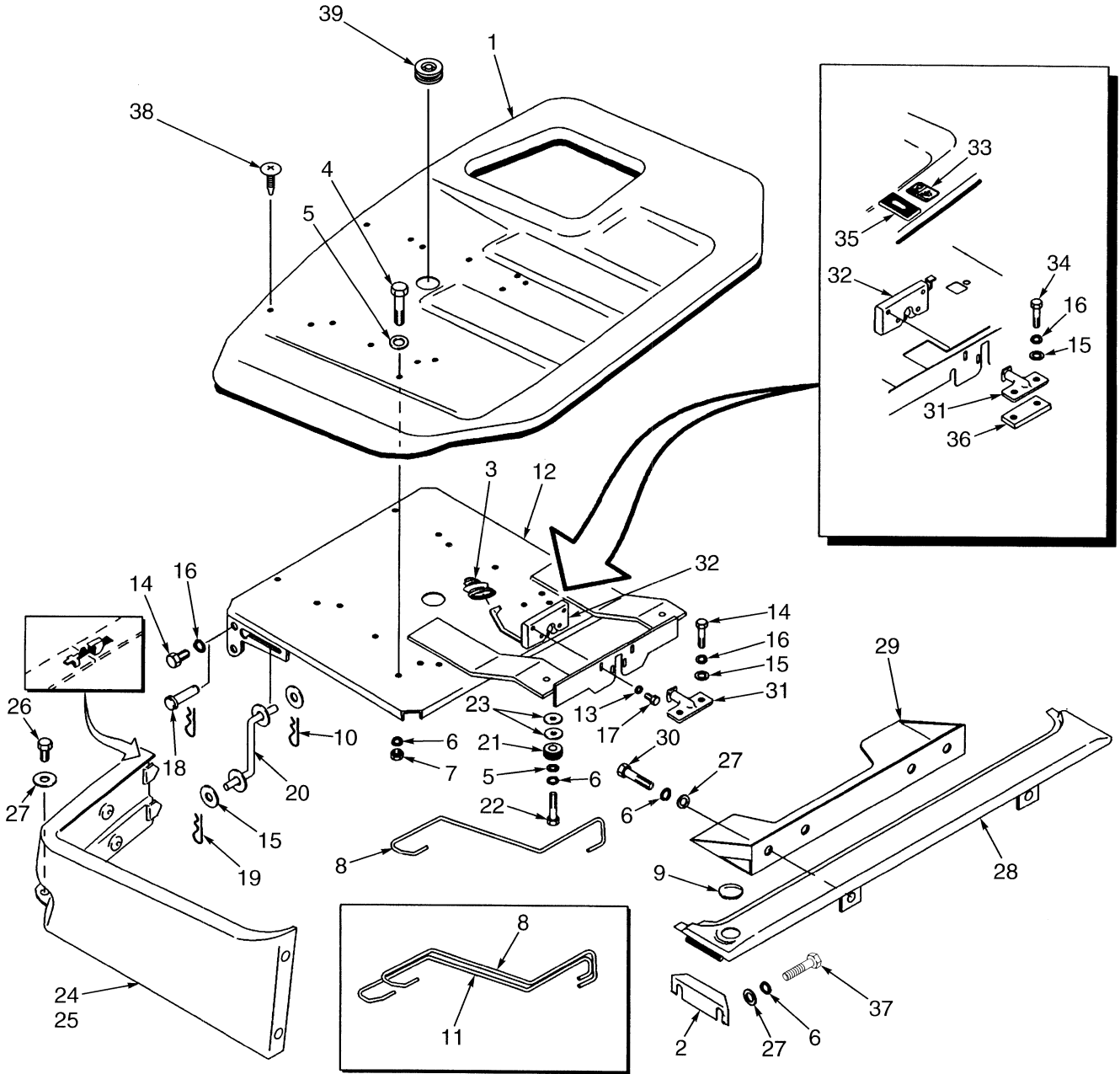


HP120547

**OVERHEAD GUARD**

ITEM	PART NO.	DESCRIPTION	QTY
1	2021662	Overhead Guard .....	1
2	132860	Capscrew .....	4
3	292528	Capscrew .....	4
4	292683	Lockwasher .....	4
5	15177	Washer .....	4
6	320161	Washer .....	4
7	300937	Locknut .....	4
8	1343647	Handle .....	1
9	329067	Screw .....	2
10	1363916	Plug .....	12
11	1363917	Plug .....	4
12	1363918	Plug .....	3
13	1339265	Grill .....	2
14	2022732	Pad (Noise Reduction).....	2

## ENGINE COVER (Figure 1-4)



HP120548

**ENGINE COVER****KEY:****A: Non-Suspension Seat****B: Suspension Seat**

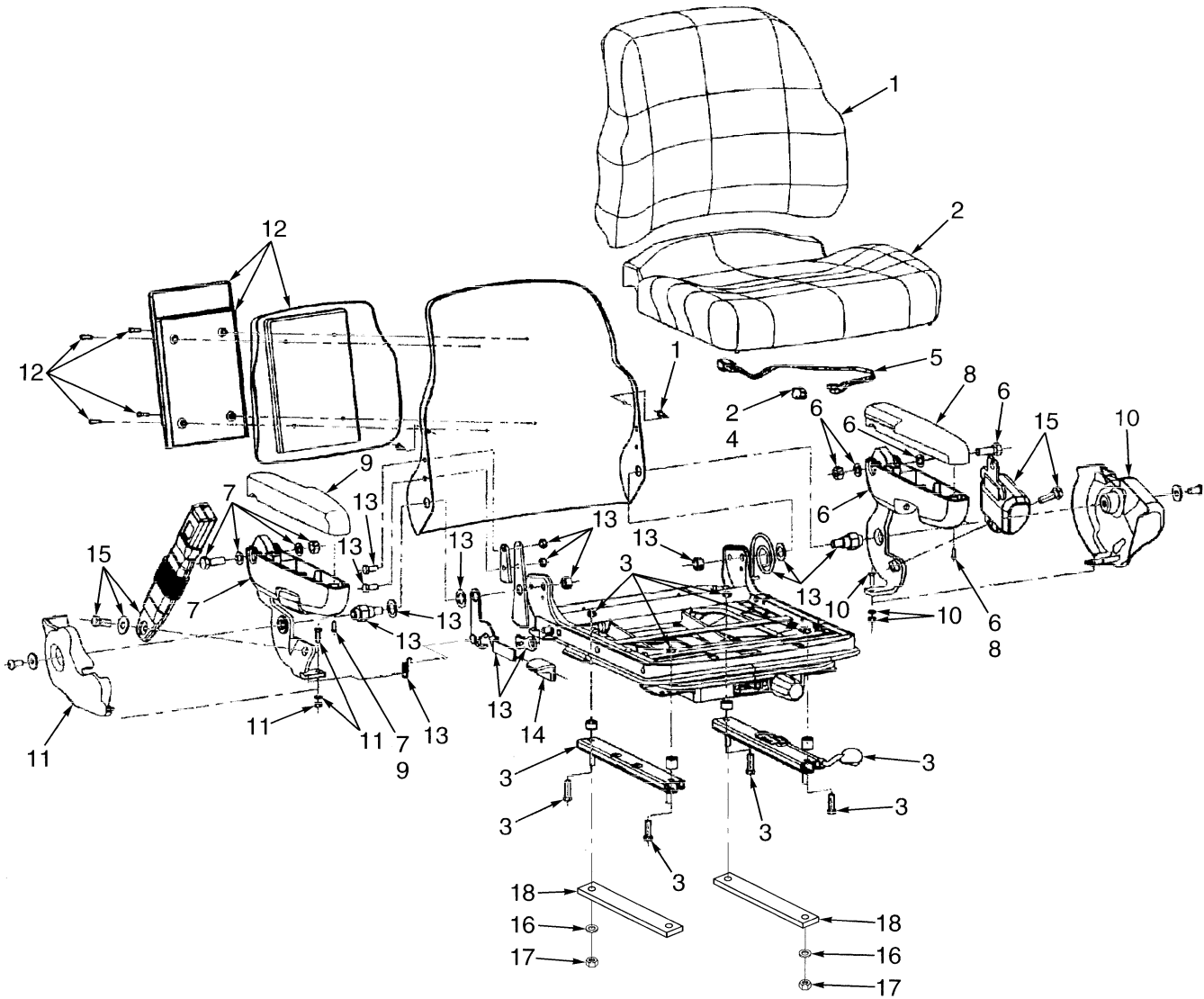
ITEM	PART NO.	DESCRIPTION	QTY	
			A	B
1	1385128	Cover .....	1	1
2	2021223	Bracket.....	2	2
3	1339786	Boot .....	1	1
4	176640	Capscrew.....	2	2
5	320157	Washer .....	6	6
6	292681	Lockwasher.....	12	12
7	239503	Nut .....	6	6
8	2026074	Spring .....	1	1
9	1363918	Plug .....	1	1
10	15222	Cotter Pin.....	1	1
11	2026073	Spring .....	..	1
12	<b>ce</b> 1389607	Seat Pan .....	1	1
12	<b>bd</b> 1498410	Seat Pan .....	1	1
13	320156	Washer .....	4	4
14	<b>f</b> 136985	Capscrew.....	2	2
14	<b>g</b> 287860	Capscrew.....	2	2
15	320159	Washer .....	6	6
16	292682	Lockwasher.....	2	2
17	199563	Capscrew.....	4	4
18	2021207	Pin .....	2	2
19	1362714	Cotter Pin.....	4	4
20	2021208	Support .....	1	1
21	2021213	Cushion (Rubber) .....	2	2
22	296167	Capscrew.....	2	2
23	15177	Washer .....	AR	AR
24	2023466	Panel (RH) .....	1	1
25	2021216	Panel (LH).....	1	1
26	136749	Capscrew.....	2	2
27	15175	Washer .....	10	10
28	2021218	Cover (Radiator) .....	1	1
29	2021219	Bracket.....	1	1
30	136749	Capscrew.....	4	4
31	1337148	Striker Plate .....	1	1
32	<b>a</b> 2021222	Latch .....	1	1
33	<b>a</b> 1386223	Nut .....	1	1
34	<b>a</b> 287860	Capscrew.....	2	2
35	<b>a</b> 1386224	Cover .....	1	1
36	<b>a</b> 1385129	Spacer .....	1	1
37	329067	Screw.....	4	4
38	1347045	Fastener.....	4	4
39	1359587	Grommet.....	1	1

**FOOTNOTES:****a** Noise Reduction**b** ⇒ S/N E001B-02823Z LPG**c** S/N E001B-02824Z ⇒ LPG

## ENGINE COVER

- d** ⇒ S/N E001B-02892Z Diesel
- e** S/N E001B-02893Z ⇒ Diesel
- f** ⇒ S/N E001B-03313Z
- g** S/N E001B-03314Z ⇒

## SEAT (Figure 1-5) SUSPENSION SHEET 1 OF 2



HP120549

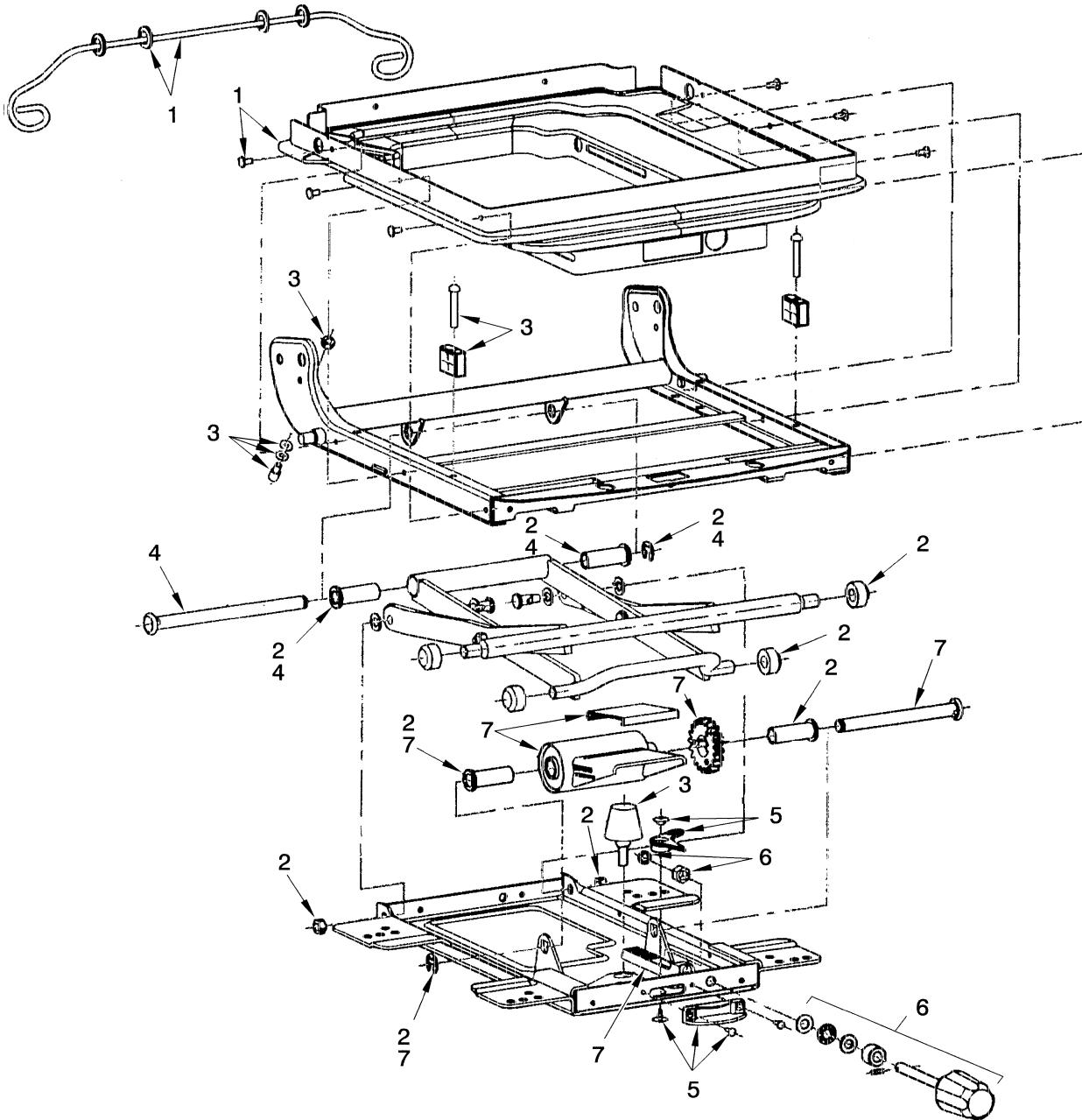
**SEAT  
SUSPENSION  
SHEET 1 OF 2**

ITEM	PART NO.	DESCRIPTION	QTY
	1466006	Full Suspension Seat (Vinyl).....	1
	1466007	Full Suspension Seat (Fabric) .....	1
1	1467533	Back Cushion (Vinyl) .....	1
1	1467535	Back Cushion (Fabric) .....	1
2	1467536	Seat Cushion (Fabric) .....	1
2	1494076	Seat Cushion (Vinyl).....	1
3	1467513	Slider Kit .....	1
4	1467514	Switch (Seat) .....	1
5	1467515	Wire Harness .....	1
6	1467516	Armrest (LH) (LH).....	1
7	1467517	Armrest (RH) (RH) .....	1
8	1467518	Cap (LH) .....	1
9	1467519	Cap (RH) .....	1
10	1467520	Cover (LH) .....	1
11	1467521	Cover (RH) .....	1
12	1467522	Holder Kit.....	1
13	1467530	Recliner Kit.....	1
14	1467531	Recliner Knob.....	1
15	1467532	Seat Belt Kit.....	1
16	15175	Washer .....	4
17	145639	Nut.....	4
18	<b>b</b> 2028186	Spacer .....	2
18	<b>a</b> 2039216	Spacer .....	1

**FOOTNOTES:**

- a** H1.50-1.75XM (LPG)
- b** H1.50-2.00XM And Diesel H2.00XMS

## SEAT (Figure 1-6) SUSPENSION SHEET 2 OF 2



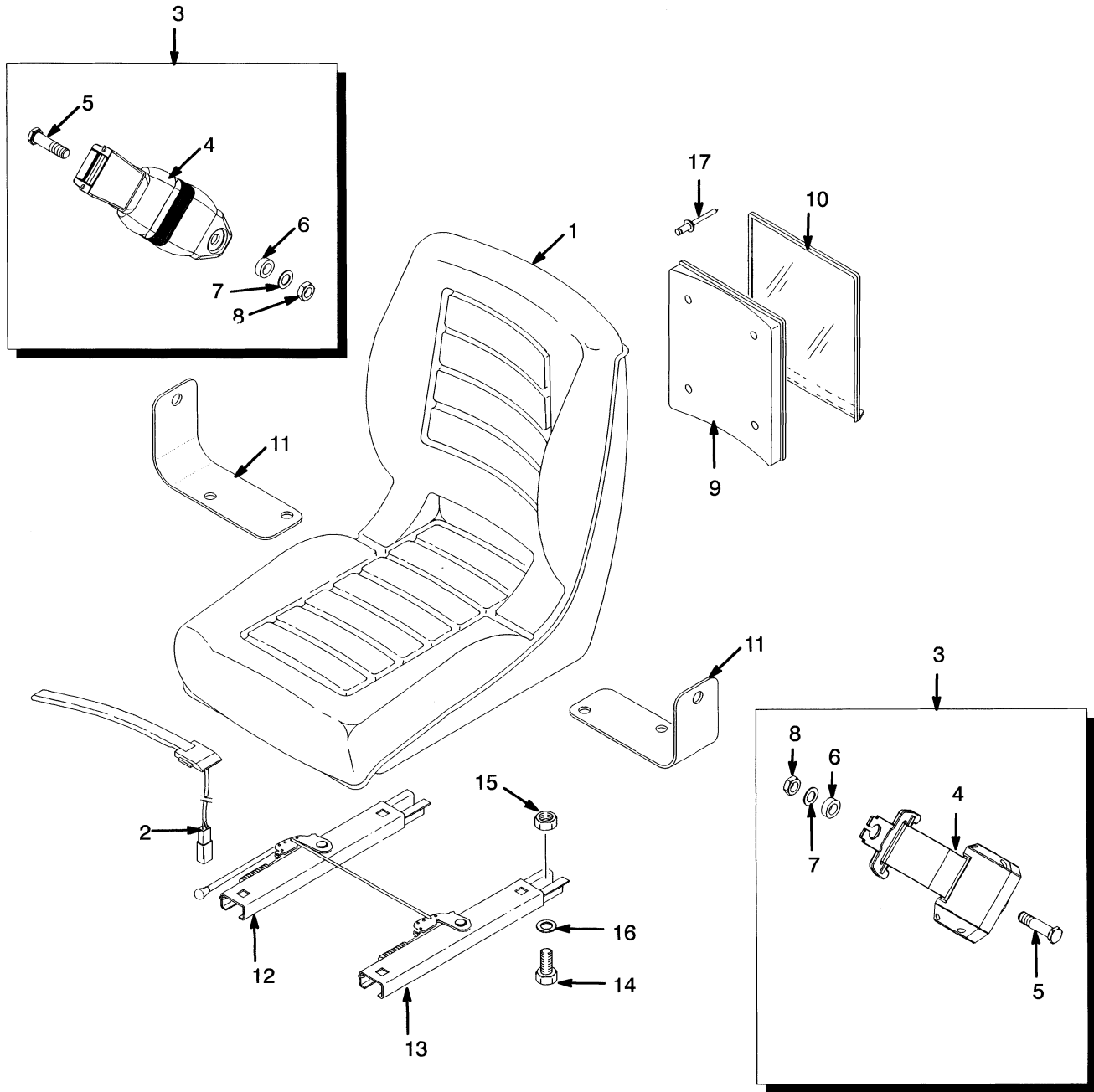
HP120550



**SEAT  
SUSPENSION  
SHEET 2 OF 2**

<b>ITEM</b>	<b>PART NO.</b>	<b>DESCRIPTION</b>	<b>QTY</b>
1	1467523	Boot Kit .....	1
2	1467524	Roller and Bearing Kit.....	1
3	1467525	Bumper and Stop Kit .....	1
4	1467526	Bearing Shaft Kit.....	1
5	1467527	Weight Adjuster Indicator Kit .....	1
6	1467528	Knob Kit .....	1
7	1467529	Suspension Spring Kit .....	1

## SEAT (Figure 1-7) NON-SUSPENSION

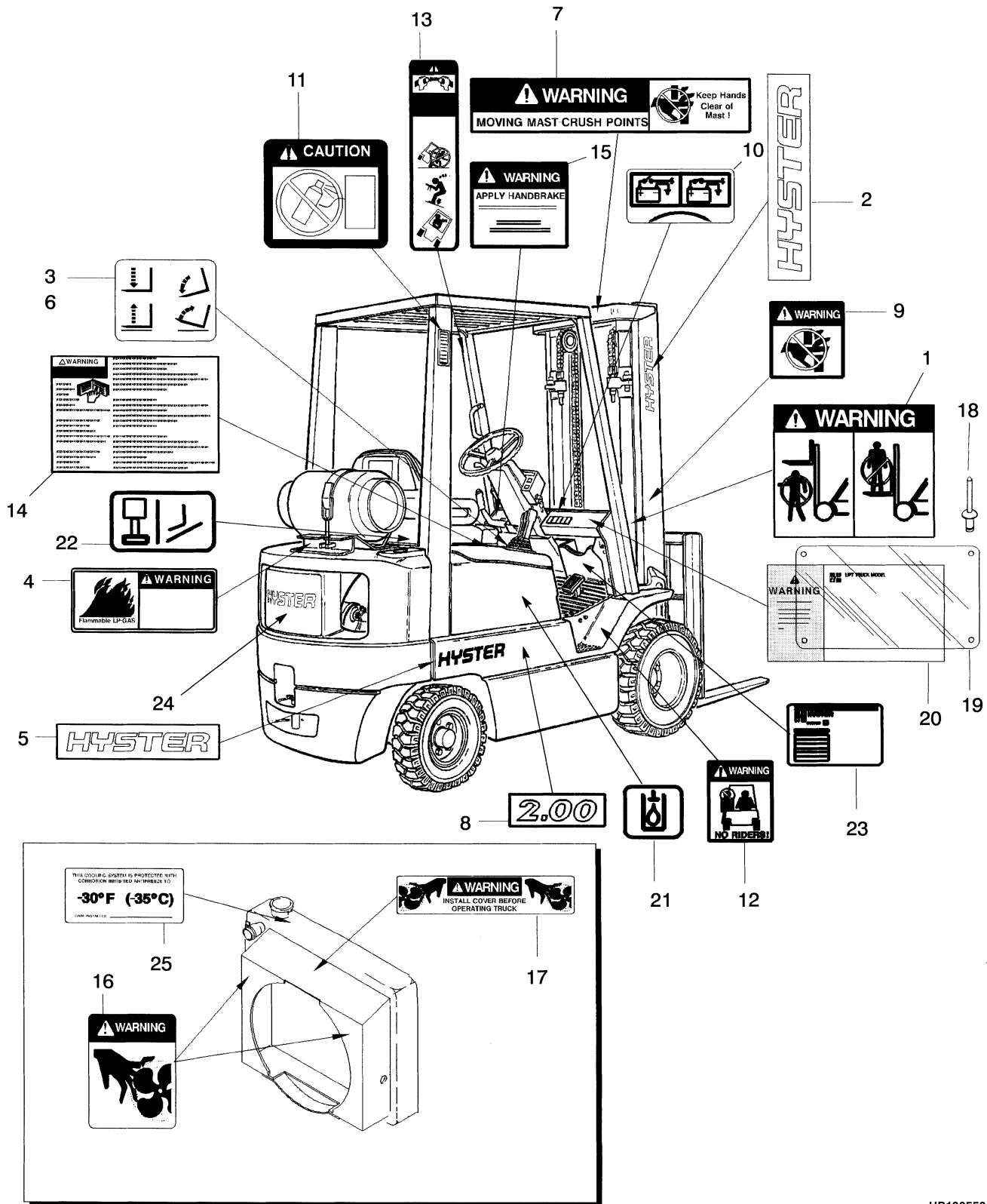


HP120551

**SEAT  
NON-SUSPENSION**

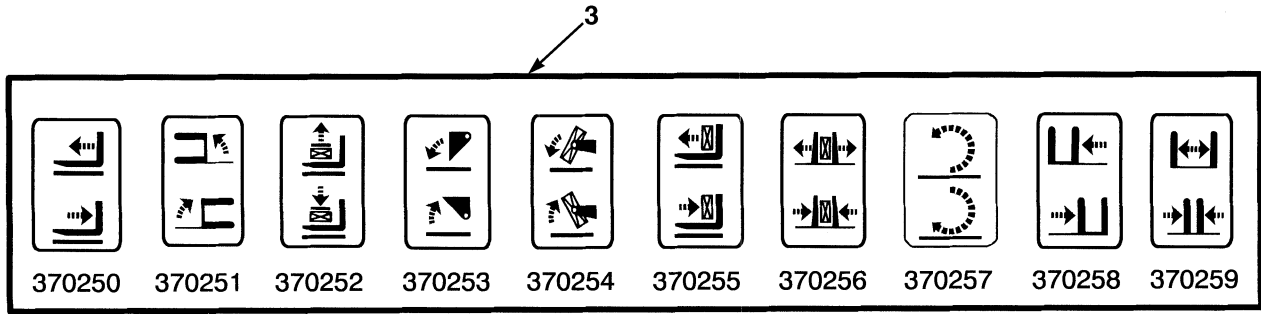
ITEM	PART NO.	DESCRIPTION	QTY
	1460231	Non-Suspension Seat.....	1
1	364911	Seat.....	1
3	1461081	Seat Belt Kit.....	1
4	.....	Seat Belt.....	1
5	.....	Screw.....	2
6	.....	Washer.....	2
7	.....	Washer.....	2
8	.....	Nut.....	2
9	335955	Information Case.....	1
10	335991	Cover.....	1
11	1470175	Bracket.....	1
12	1470176	Seat Rail.....	1
13	1470177	Seat Rail.....	1
14	18498	Capscrew.....	4
15	145639	Nut.....	4
16	15175	Washer.....	4
17	.....	Rivet.....	4

## LABELS (Figure 1-8)



HP120552

**LABELS**



HP120553

ITEM	PART NO.	DESCRIPTION	QTY
1	1339830	Label (Mast Warning) .....	2
2	1339672	Label (Hyster) .....	2
3	370250	Label (Auxiliary Function - Reach) .....	AR
3	370251	Label (Auxiliary Function - Swing) .....	AR
3	370252	Label (Auxiliary Function - Stabilizer) .....	AR
3	370253	Label (Auxiliary Function - Dump/Scoop) .....	AR
3	370254	Label (Auxiliary Function - Upender) .....	AR
3	370255	Label (Auxiliary Function - Push/Pull) .....	AR
3	370256	Label (Auxiliary Function - Clamp) .....	AR
3	370257	Label (Auxiliary Function - Rotate) .....	AR
3	370258	Label (Auxiliary Function - Side-Shift) .....	AR
3	370259	Label (Auxiliary Function - Fork Spreader) .....	AR
4	1354172	Label (Flammable LPG) .....	1
5	2020517	Label (Hyster) .....	2
6	1356137	Label (Lift and Tilt) .....	1
7	1343276	Label (Mast Warning) .....	1
8	2020510	Label (H1.50XM) .....	2
8	2020511	Label (H1.75XM) .....	2
8	2020512	Label (H2.00XMS) .....	2
9	1339832	Label (Pinch Point) .....	2
10	1352190	Label (Battery Disconnect) .....	1
11	2034460	Label (Ether Warning) (Diesel) .....	1
12	1339828	Label (No Riders) .....	2
13	1359588	Label (Operator Restraint) .....	2
14	1366725	Label (Operator Warning) .....	1
15	2310911	Label (Parking Brake Warning) .....	1
16	1300094	Label (Fan Warning) .....	2
17	1345926	Label (Fan Warning) .....	1
18	170658	Rivet .....	4
19	389688	Cover .....	1
20	a . . . . .	Nameplate .....	1
21	1385099	Label (Hydraulic Oil Fill) .....	1
22	1385100	Label (Hood Latch) .....	1
23	320037	Label (Patent Plate) .....	1
24	1450409	Label (Hyster) (Counterweight) .....	1

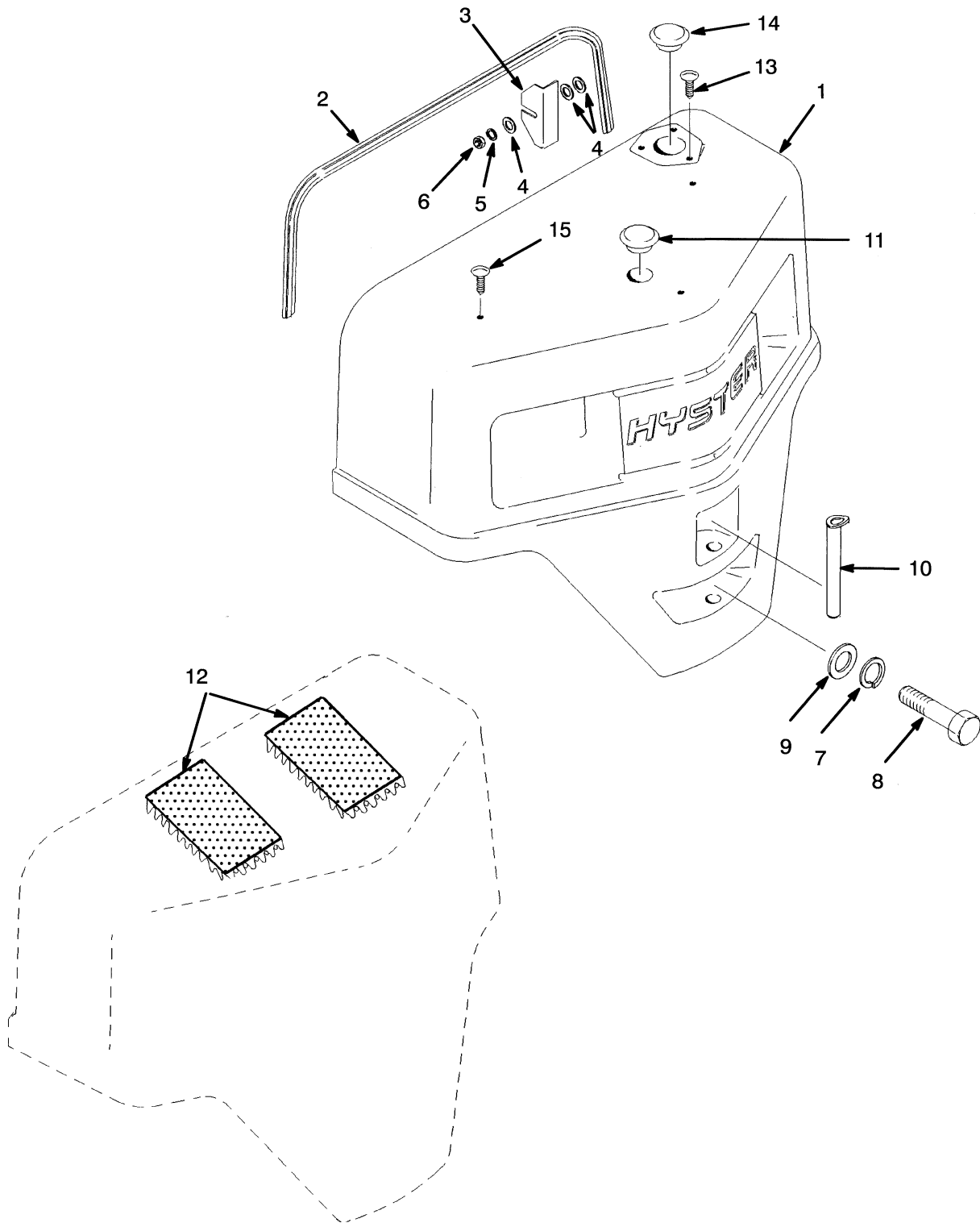
## LABELS

ITEM	PART NO.	DESCRIPTION	QTY
25	1354165	Label (Anti-freeze) .....	1
26	<b>bc</b> 1503878	Label (Noise Level) .....	1

**FOOTNOTES:**

- a** Contact Your Hyster Dealer
- b** Not Illustrated
- c** S/N E001B-02581Z ⇒

## COUNTERWEIGHT (Figure 1-9)



HP120554

**COUNTERWEIGHT**

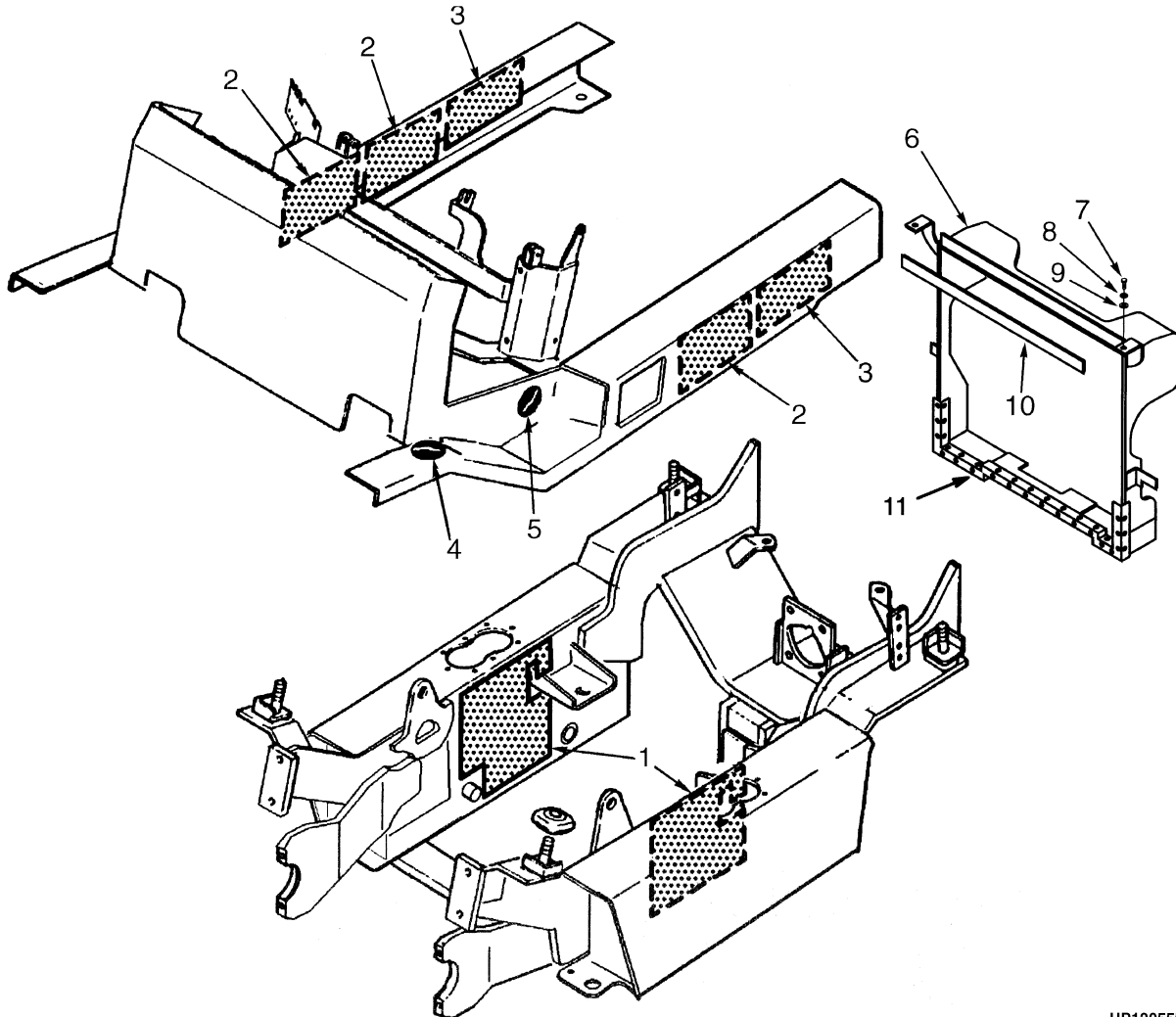
ITEM	PART NO.	DESCRIPTION	QTY
1	2023469	Counterweight (H150XM) .....	1
1	2023470	Counterweight (H1.75XM) .....	1
1	2023472	Counterweight (H2.00XMS).....	1
2	2023356	Seal .....	1
3	2021563	Shim .....	AR
4	320158	Washer .....	12
5	292681	Lockwasher.....	4
6	239503	Nut .....	4
7	292689	Lockwasher.....	2
8	292609	Capscrew.....	2
9	2021562	Washer .....	2
10	2022849	Pin .....	1
11	1350231	Plug .....	1
12	2022042	Pad .....	2
13	<b>b</b> 1347045	Fastener.....	3
14	<b>a</b> 2021395	Cap .....	1
15	<b>a</b> 1347045	Fastener.....	3

**FOOTNOTES:**

- a** Diesel
- b** Without Upswept Exhaust



## NOISE REDUCTION (Figure 1-10) FRAME

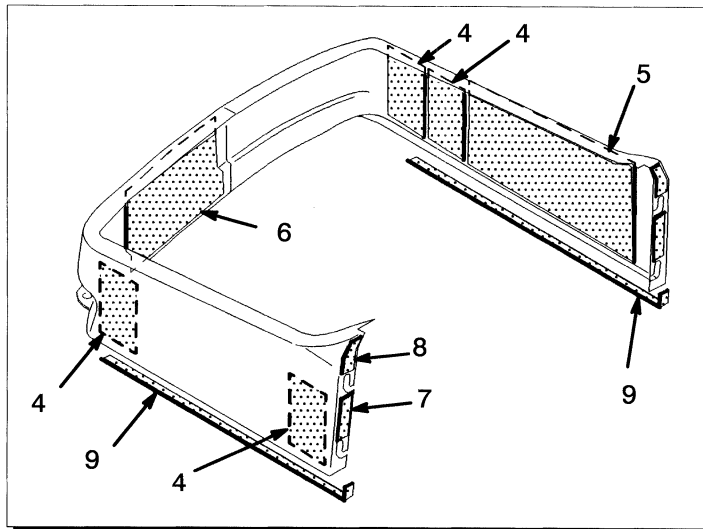
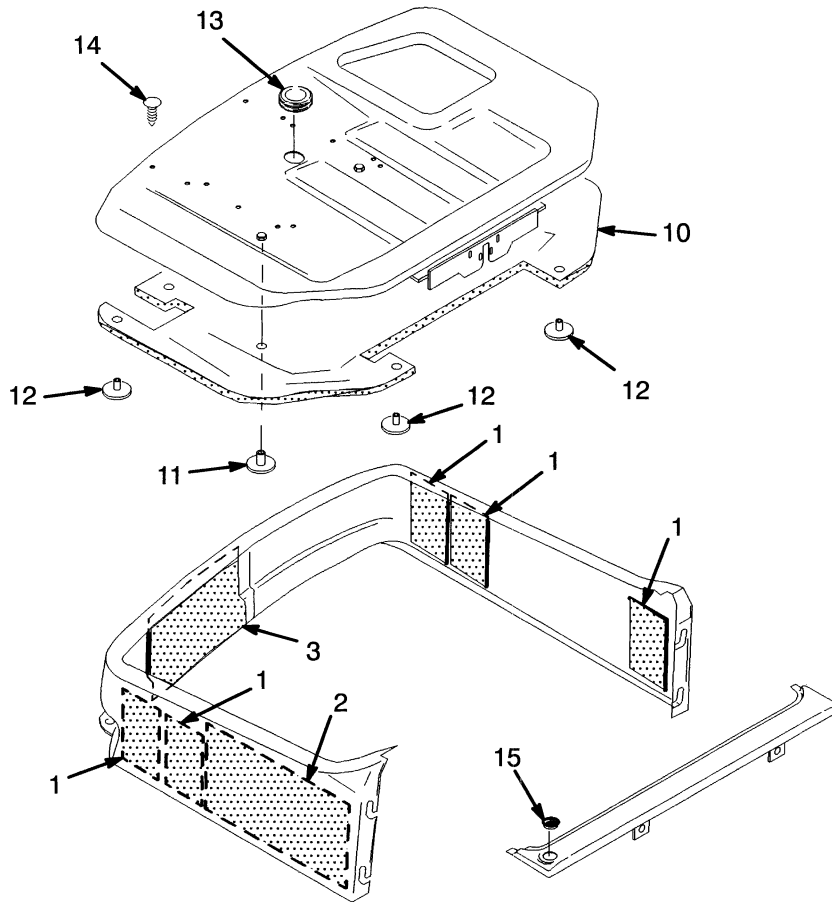


HP120555

**NOISE REDUCTION  
FRAME**

ITEM	PART NO.	DESCRIPTION	QTY
1	1369406	Pad .....	1
2	2022036	Pad .....	3
3	2022037	Pad .....	2
4	2021395	Cap .....	2
5	2022803	Cap .....	2
6	1495922	Duct (Diesel).....	2
6	1495924	Duct (LPG).....	2
7	136681	Capscrew.....	2
8	292681	Lockwasher.....	2
9	320157	Washer .....	2
10	1495962	Liner.....	2
11	2022032	Pad .....	2

## NOISE REDUCTION (Figure 1-11) ENGINE COVER

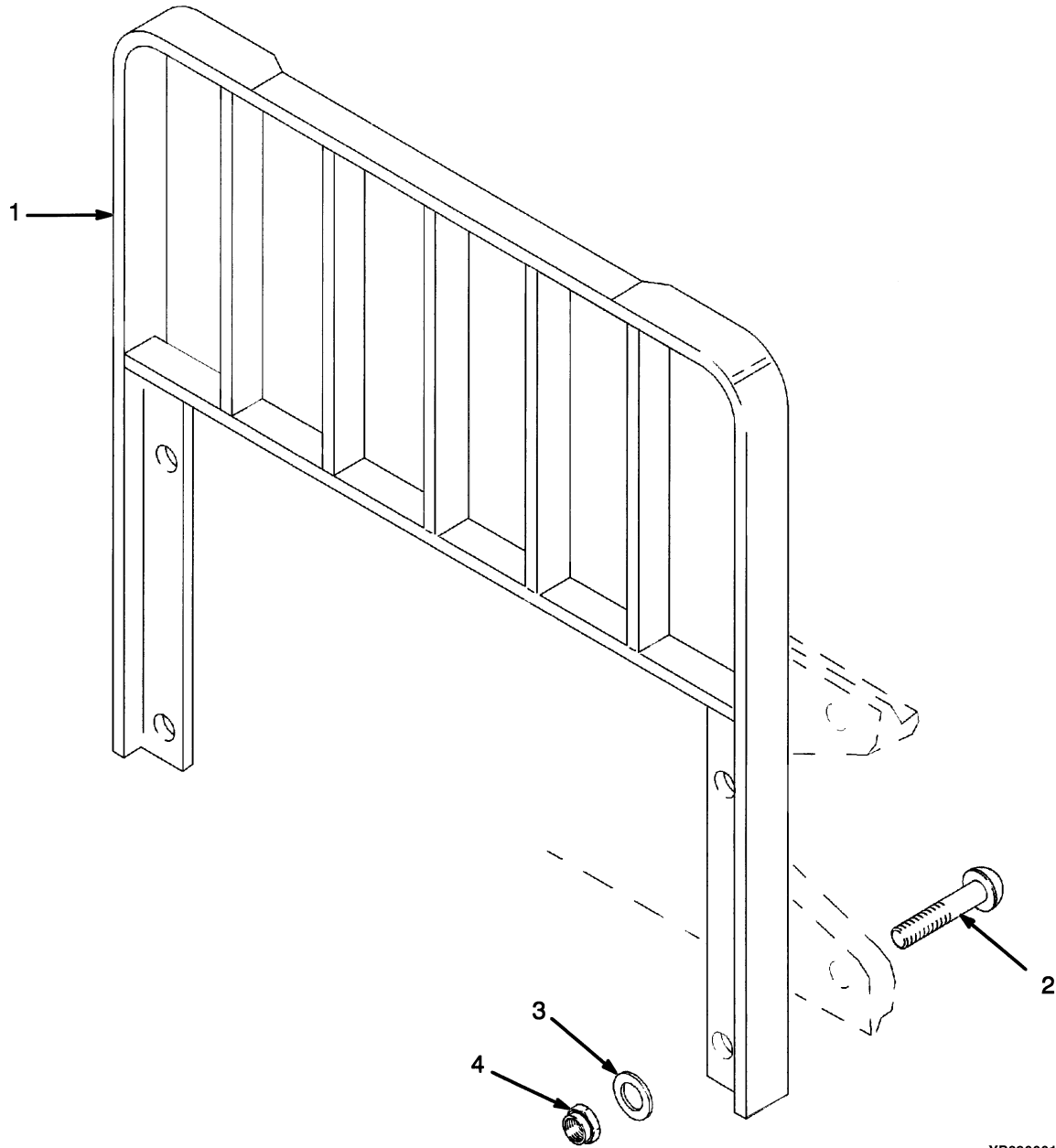


HP120556

**NOISE REDUCTION  
ENGINE COVER****KEY:****A: LPG****B: Diesel**

ITEM	PART NO.	DESCRIPTION	QTY	
			A	B
1	2022040	Pad .....	5	..
2	2022041	Pad .....	1	..
3	2022046	Pad .....	1	..
4	2022040	Pad .....	..	4
5	2022041	Pad .....	..	1
6	2022046	Pad .....	..	1
7	2022033	Pad .....	..	2
8	2022034	Pad .....	..	2
9	2022032	Pad .....	..	2
10	2022044	Pad .....	1	1
11	1361087	Button .....	4	4
12	280644	Button .....	4	4
13	1359587	Grommet.....	1	1
14	1347045	Fastener.....	4	4
15	1335932	Plug .....	1	1

## LOAD BACKREST EXTENSION (Figure 1-12)

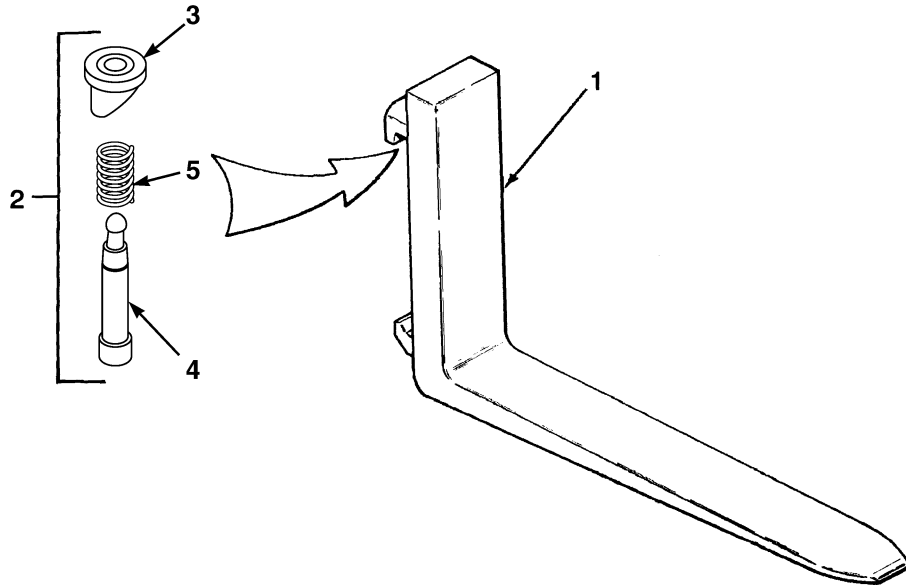


YP290001

**LOAD BACKREST EXTENSION**

ITEM	PART NO.	DESCRIPTION	QTY
1	1349446	Load Backrest Extension (977 mm).....	1
2	2034347	Capscrew.....	4
3	221771	Washer.....	4
3	296423	Washer (Optional).....	4
4	300937	Locknut.....	4

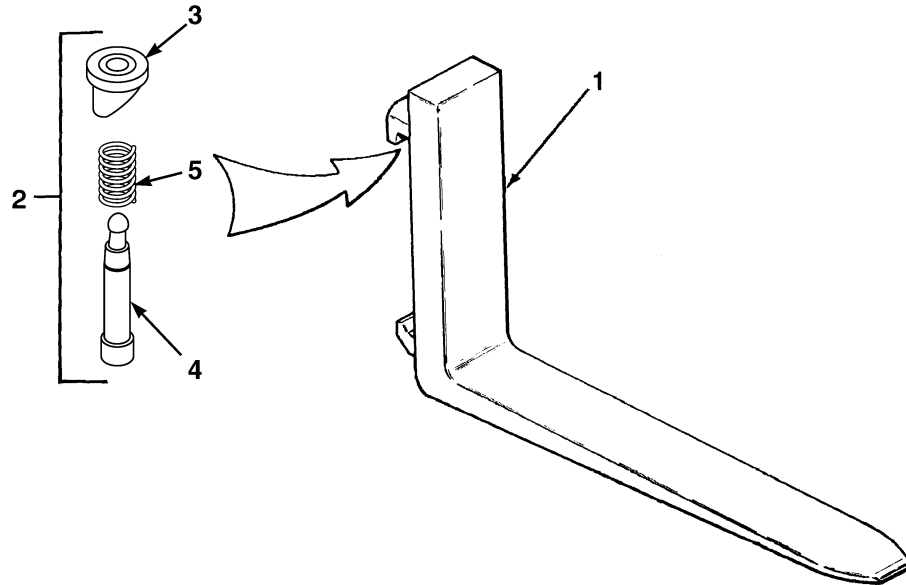
## FORKS (Figure 1-13) STANDARD



HP171347

ITEM	PART NO.	DESCRIPTION	QTY
1	1327021	Fork (991 mm) .....	2
1	1327022	Fork (1092 mm) .....	2
1	1327023	Fork (1194 mm) .....	2
2	1523735	Latch Kit (Class II) .....	2
3	1523732	Knob.....	1
4	1523733	Pin.....	1
5	1500782	Spring.....	1

**FORKS (Figure 1-14)  
POLISHED WITH FULL BOTTOM TAPER**



HP171347

ITEM	PART NO.	DESCRIPTION	QTY
1	1333043	Fork (1000 mm) .....	2
1	1333044	Fork (1100 mm) .....	2
1	1333045	Fork (1200 mm) .....	2
2	1523735	Latch Kit (Class II) .....	2
3	1523732	Knob.....	1
4	1523733	Pin.....	1
5	1500782	Spring.....	1



**BUY NOW**

**Then Instant Download  
the Complete Manual  
Thank you very much!**