

PARTS MANUAL

CHALLENGER

**H20.00-32.00F/FS
(E008)**

CUSTOMER EDITION

HYSTER

SECTIONS

1	FRAME
2	ENGINES
3	FUEL SYSTEM
4	ELECTRICAL SYSTEM
5	TRANSMISSION
6	DRIVE AXLE
7	STEERING SYSTEM
8	BRAKE SYSTEM
9	HYDRAULIC SYSTEM
10	MAST-TWO STAGE VISTA
11	ATTACHMENTS
12	OPTIONS
13	NUMERICAL INDEX

This Parts Manual is divided into 13 major sections which are listed above. Quick reference to these sections can be made by placing the right thumb on the tab of the desired section, bending the book back and thumbing the pages to the corresponding tab.

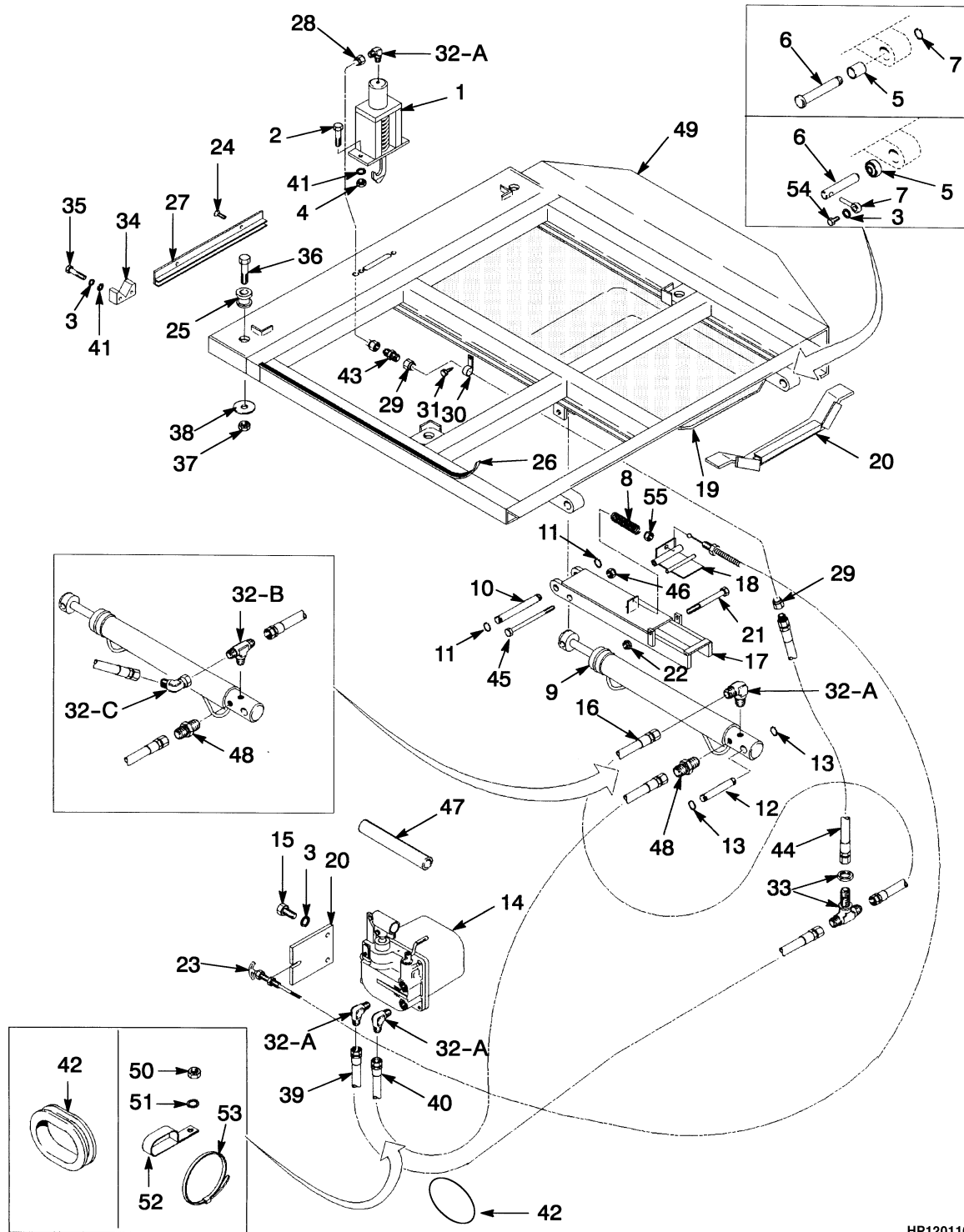
1

FRAME

SECTION 1
FRAME

DESCRIPTION	PAGE
COUNTERWEIGHT	1-46
FLOOR PLATES AND COVERS	
H20.00-32.00F, H550-700F	1-38
H20.00-32.00FS, H440-700FS	1-42
GENERAL TRUCK	1-2
HAND PUMP	
OPERATOR COMPARTMENT	
⇒S/N E008E1592	1-16
S/N E008E1593⇒	1-18
HEATER	1-32
HEATER CONTROL	1-35
HOOD	
H20.00-32.00FS, H440-700FS	1-66
HOOD AND LINKAGE	
H20.00-32.00F, H550-700F	
TIER I ENGINE	1-58
HOOD LINKAGE	
H20.00-32.00F, H550-700F	
TIER II ENGINE	1-62
LABELS	1-68
LATCH	
HYDRAULIC	1-14
OPERATOR COMPARTMENT	
SHEET 1 OF 3	1-20
SHEET 2 OF 3	1-24
SHEET 3 OF 3	1-28
PLATFORM	
OPERATOR COMPARTMENT	1-4
SEAT ASSEMBLY	
HIGH BACK	
KAB	
PENDING PER ECN 68229-14⇒	1-50
KAB	
⇒PENDING PER ECN 68229-14	1-48
SUSPENSION SEAT	
GRAMMER HIGH BACK	
SHEET 1 OF 2	1-52
SHEET 2 OF 2	1-56
TILT CYLINDER	
CAB TILT	
⇒S/N E008D1594, ⇒S/N E008E1676	1-8
S/N E008D1595↔S/N E008D1618, S/N E008E1677↔S/N E008E1699	1-10
S/N E008D1618⇒, S/N E008E1699⇒	1-12
WINDSCREEN WASHER	1-36

PLATFORM (Figure 1-2) OPERATOR COMPARTMENT



HP120110

**PLATFORM
OPERATOR COMPARTMENT****KEY:****A: Center Compartment (H20.00-32.00F, H550-700F)****B: Left Compartment (H20.00-32.00F, H550-700F)****C: Center Compartment (H440-700FS)****D: Left Compartment (H440-700FS)**

ITEM	PART NO.	DESCRIPTION	QTY			
			A	B	C	D
1	1335659	Latch (Hydraulic) (☞ Figure 1-6)	1	1	1	1
2	16815	Capscrew.....	2	2	2	2
3	gq 15156	Lockwasher.....	12	12	12	12
3	hr 15156	Lockwasher.....	8	8	8	8
4	156133	Nut.....	2	2	2	2
5	eo 1333065	Bushing.....	2	2	2	2
5	fp 192970	Bushing.....	2	2	2	2
6	eo 1335661	Pin	2	2	2	2
6	fp 1354548	Pin	2	2	2	2
7	eo 131358	Snap Ring.....	2	2	2	2
7	fp 195566	Anchor	2	2	2	2
8	1359434	Spring	1	1	1	1
9	iu 1335658	Tilt Cylinder (☞ Figure 1-3)	1	1	1	1
9	jv 1367339	Tilt Cylinder (☞ Figure 1-4)	1	1	1	1
9	kw 816345	Tilt Cylinder (☞ Figure 1-5)	1	1	1	1
10	1336921	Pin	1	1	1	1
11	1194630	Snap Ring.....	2	2	2	2
12	1336920	Pin	1	1	1	1
13	131357	Snap Ring.....	2	2	2	2
14	s 1335657	Hydraulic Pump (☞ Figure 1-7)	1	1	1	1
14	t 816344	Hydraulic Pump (☞ Figure 1-8)	1	1	1	1
15	16805	Capscrew.....	2	2	2	2
16	139721	Hose	1	1
17	1359435	Link	1	1	1	1
18	1344284	Latch.....	1	1	1	1
19	1336907	Sound Liner	2	2	2	2
20	hr 1359444	Support.....	2	2	2	2
21	18547	Capscrew.....	1	1	1	1
22	192077	Nut.....	1	1	1	1
23	1336910	Cable (Control)	1	1
23	1353946	Cable (Control)	1	1
24	18337	Capscrew.....	4	4	4	4
25	1325519	Mount (Cab).....	4	4	4	4
26	178901	Foam Tape.....	AR	AR	AR	AR
27	1331886	Bracket.....	2	2	2	2
28	1337259	Tube.....	1	1	1	1
29	1337260	Tube.....	1	1	1	1
30	124359	Clamp	4	4	4	4
31	277279	Screw.....	4	4	4	4
32	14500	Fitting (A)	1	1	3	3
32	14602	Fitting (B)	1	1
32	16556	Fitting (D).....	2	2	2	2
32	16997	Fitting (C).....	1	1
33	16472	Fitting.....	1	1
34	1336090	Support.....	2	2	2	2

PLATFORM OPERATOR COMPARTMENT

ITEM	PART NO.	DESCRIPTION	QTY			
			A	B	C	D
35	16816	Capscrew.....	4	4	4	4
36	a 292535	Capscrew.....	4	4	4	4
36	b 292538	Capscrew.....	4	4	4	4
37	300937	Locknut.....	4	4	4	4
38	a 300939	Washer.....	4	4	4	4
38	300939	Washer.....	4	4	4	4
38	b 816574	Spacer.....	4	4	4	4
39	1337300	Hose.....	1	1
39	146236	Hose.....	1	1
40	146236	Hose.....	1	1
40	265325	Hose.....	1	1
41	15176	Washer.....	6	6	6	6
42	1337281	Grommet.....	1	1	1	1
43	14689	Fitting.....	1	1	1	1
44	1339532	Hose.....	1	1	1	1
45	18486	Capscrew.....	1	1	1	1
46	169874	Nut.....	1	1	1	1
47	1360658	Handle (Pump).....	1	1
47	815996	Handle (Pump).....	1	1
47	816346	Grip.....	1	1
48	14668	Fitting.....	1	1	1	1
49	cl 1331920	Platform.....	1
49	dm 1466330	Platform.....	1
49	n 1507767	Platform.....	1
49	cl 1331921	Platform.....	..	1
49	n 1507768	Platform.....	..	1
49	cl 1349783	Platform.....	1	..
49	dm 1466327	Platform.....	1	..
49	n 1514838	Platform.....	1	..
49	x 1349784	Platform.....	1
49	n 1514839	Platform.....	1
49	1515579	Platform.....	1
50	15056	Nut.....	1	1
51	15134	Washer.....	1	1
52	128408	Clamp.....	2	2
53	114312	Strap Clamp.....	2	2
54	fp 16598	Capscrew.....	2	2	2	2
55	15026	Nut.....	1	1	1	1

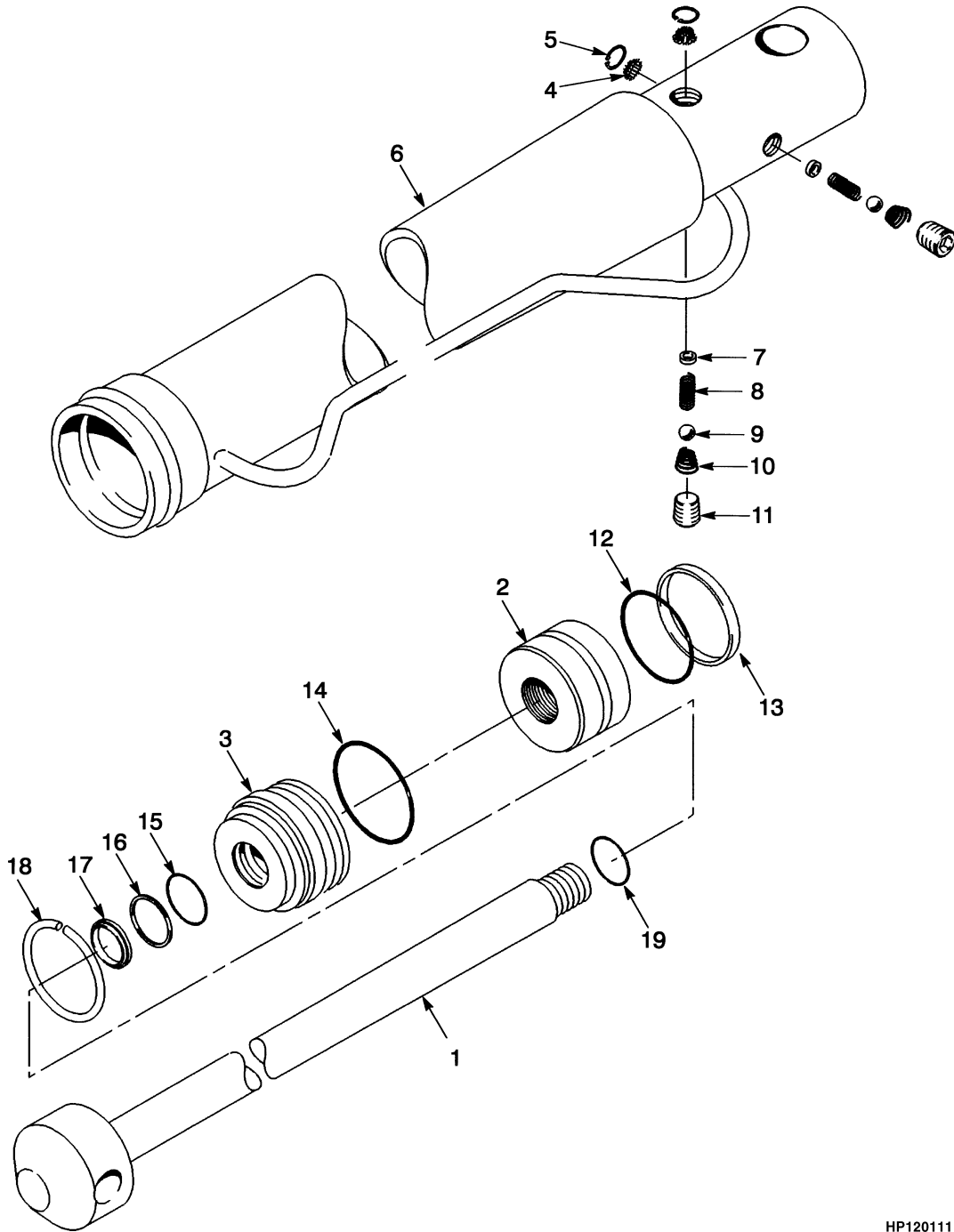
FOOTNOTES:

- a** With EC Cab
- b** With Standard Cab
- c** ⇒ S/N E008D-01701X
- d** S/N E008D-01701X⇔S/N E008E-01888Z
- e** ⇒ S/N E008D-1514
- f** S/N E008D-1515 ⇒
- g** ⇒ S/N E008D-1519
- h** S/N E008D-1520 ⇒
- i** ⇒ S/N E008D-1594
- j** S/N E008D-1595⇔S/N E008D-1618
- k** S/N E008D-1618 ⇒

**PLATFORM
OPERATOR COMPARTMENT**

l ⇒ S/N E008E-01749W
m S/N E008E-01749W⇔S/N E008E-01888Z
n S/N E008E-01889Z ⇒
o ⇒ S/N E008E-1537
p S/N E008E-1538 ⇒
q ⇒ S/N E008E-1542
r S/N E008E-1543 ⇒
s ⇒ S/N E008E-1592
t S/N E008E-1593 ⇒
u ⇒ S/N E008E-1676
v S/N E008E-1677⇔S/N E008E-1699
w S/N E008E-1699 ⇒
x ⇒ S/N E008E-1888Z

TILT CYLINDER (Figure 1-3) CAB TILT (⇒S/N E008D1594, ⇒S/N E008E1676)

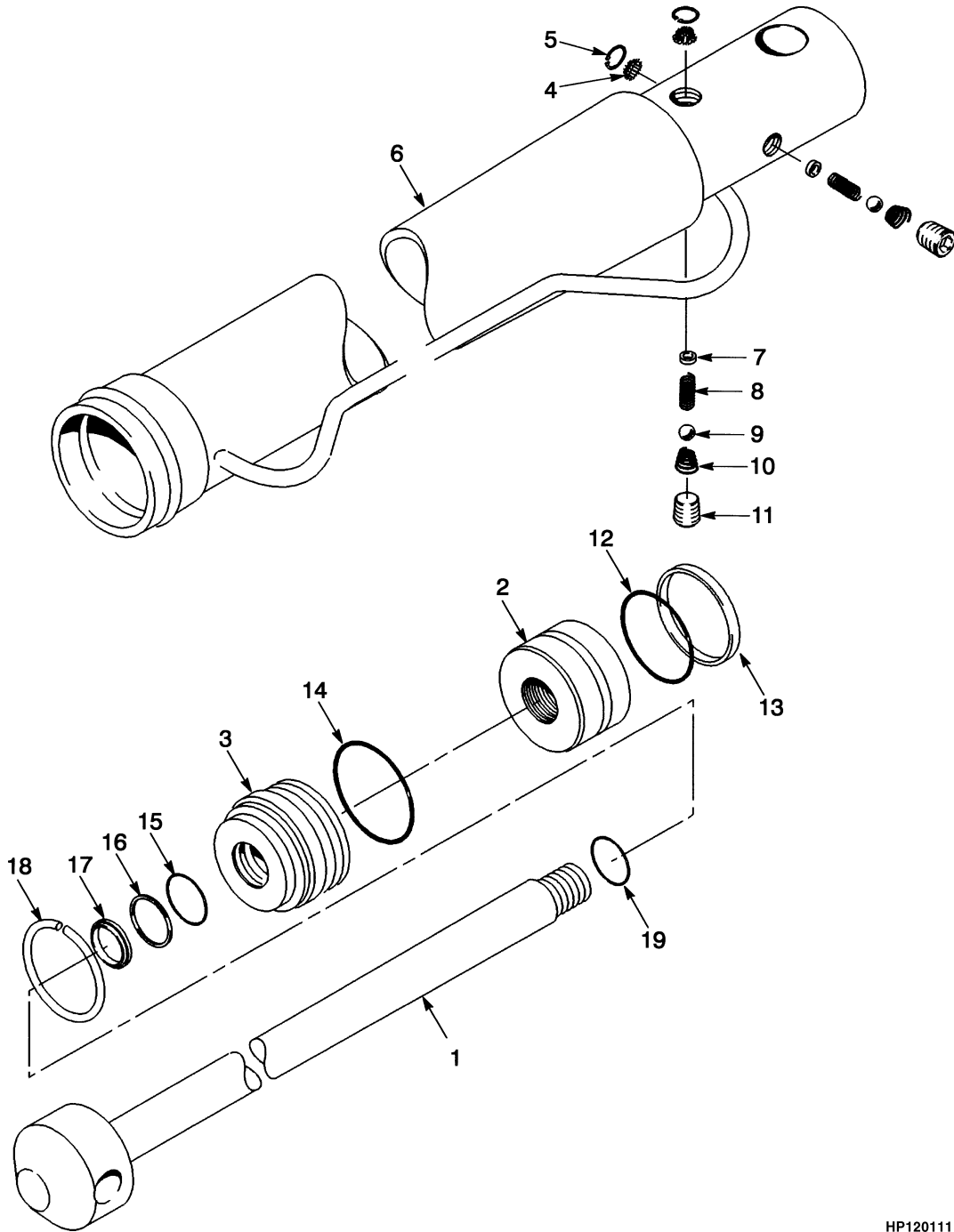


HP120111

**TILT CYLINDER
CAB TILT
(⇒S/N E008D1594, ⇒S/N E008E1676)**

ITEM	PART NO.	DESCRIPTION	QTY
	1335658	Tilt Cylinder.....	1
1	1338719	Rod.....	1
2	1338720	Piston	1
3	1338721	Gland.....	1
4	Screen.....	2
5	Retaining Ring.....	2
6	Shell	1
7	Screw (Lock)	2
8	Spring.....	2
9	Ball	2
10	Spring.....	2
11	Plug	2
12	O-Ring	1
13	Seal	1
14	O-Ring	1
15	O-Ring	1
16	Back-Up Ring	1
17	Wiper.....	1
18	Retaining Ring.....	1
19	O-Ring	1
	1338723	Seal Kit (Includes Items 4-5, 12-19)	1

TILT CYLINDER (Figure 1-4) CAB TILT (S/N E008D1595↔S/N E008D1618, S/N E008E1677↔S/N E008E1699)

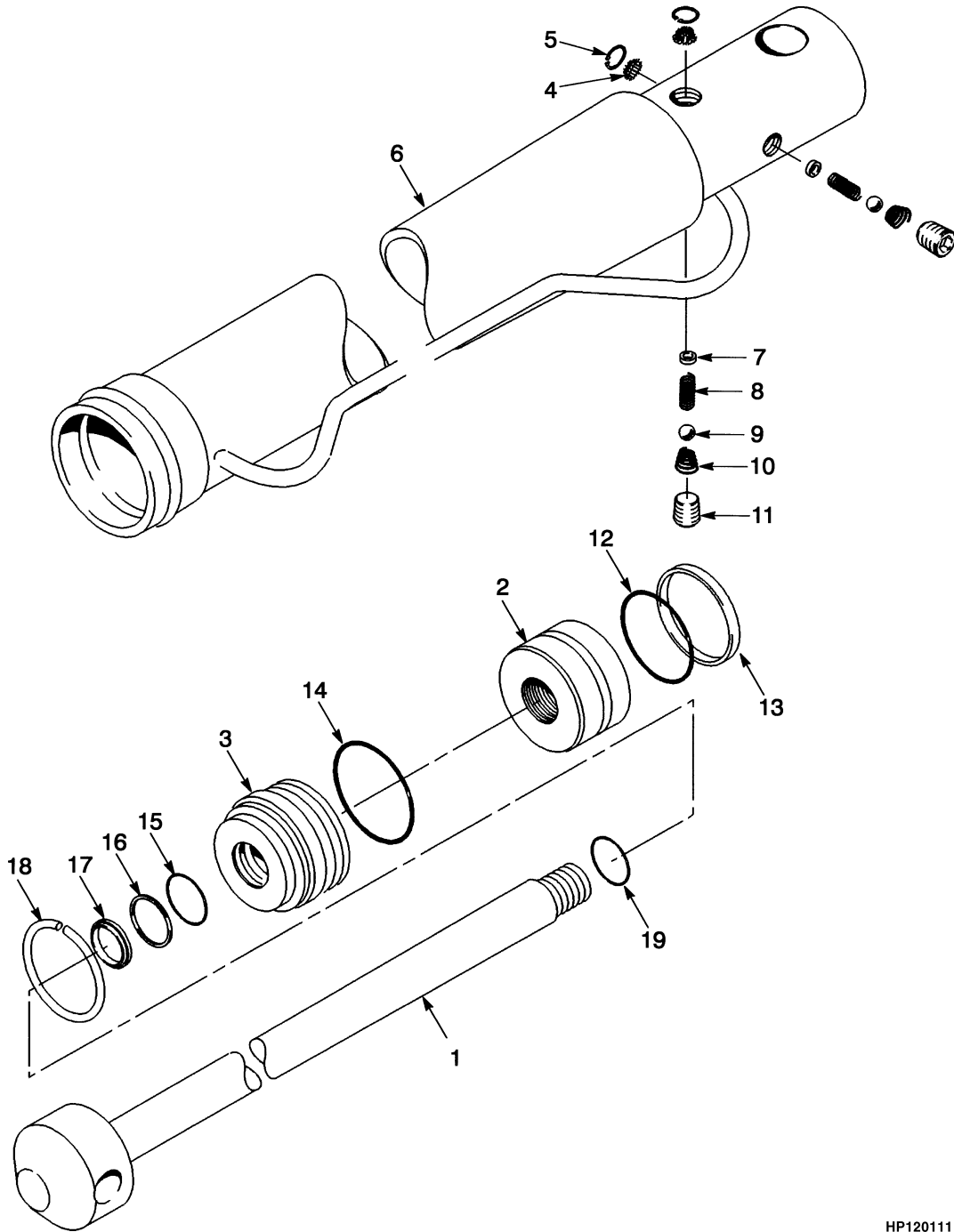


HP120111

**TILT CYLINDER
CAB TILT
(S/N E008D1595↔S/N E008D1618, S/N E008E1677↔S/N E008E1699)**

ITEM	PART NO.	DESCRIPTION	QTY
	1367339	Tilt Cylinder.....	1
1	Rod.....	1
2	Piston	1
3	Gland.....	1
4	Spring.....	2
5	Retaining Ring.....	2
6	Shell	1
7	Screw (Lock)	2
8	Spring.....	2
9	Ball	2
10	Spring.....	2
11	Plug	2
12	Seal	1
13	O-Ring	1
14	O-Ring	1
15	O-Ring	1
16	Back-Up Ring	1
17	Wiper.....	1
18	Ring.....	1
19	O-Ring.....	1
	1338723	Seal Kit (Includes Items 4-5, 12-19)	1

TILT CYLINDER (Figure 1-5) CAB TILT (S/N E008D1618⇒, S/N E008E1699⇒)



HP120111

**TILT CYLINDER
CAB TILT
(S/N E008D1618⇒, S/N E008E1699⇒)**

ITEM	PART NO.	DESCRIPTION	QTY
	816345	Tilt Cylinder.....	1
1	Rod.....	1
2	1338720	Piston	1
3	1452221	Gland.....	1
4	Screen.....	2
5	Retaining Ring.....	2
6	Shell	1
12	Seal.....	1
13	O-Ring.....	1
14	O-Ring.....	1
15	O-Ring.....	1
16	Back-Up Ring	1
17	Wiper.....	1
18	Ring.....	1
19	O-Ring.....	1
	1452222	Repair Kit (Includes Items 4-5, 12-19).....	1

BUY NOW

**Then Instant Download
the Complete Manual
Thank you very much!**