

PARTS MANUAL

CHALLENGER

**H8.00-12.00XM
(F007)**

CUSTOMER EDITION

HYSTER

SECTIONS

1	FRAME
2	ENGINES
3	FUEL SYSTEM
4	ELECTRICAL SYSTEM
5	TRANSMISSION
6	DRIVE AXLE
7	STEERING SYSTEM
8	BRAKE SYSTEM
9	HYDRAULIC SYSTEM
10	MAST-TWO STAGE LIMITED FREE-LIFT
11	MAST-THREE STAGE FULL FREE-LIFT
12	OPTIONS
13	NUMERICAL INDEX

This Parts Manual is divided into 13 major sections which are listed above. Quick reference to these sections can be made by placing the right thumb on the tab of the desired section, bending the book back and thumbing the pages to the corresponding tab.

1

FRAME

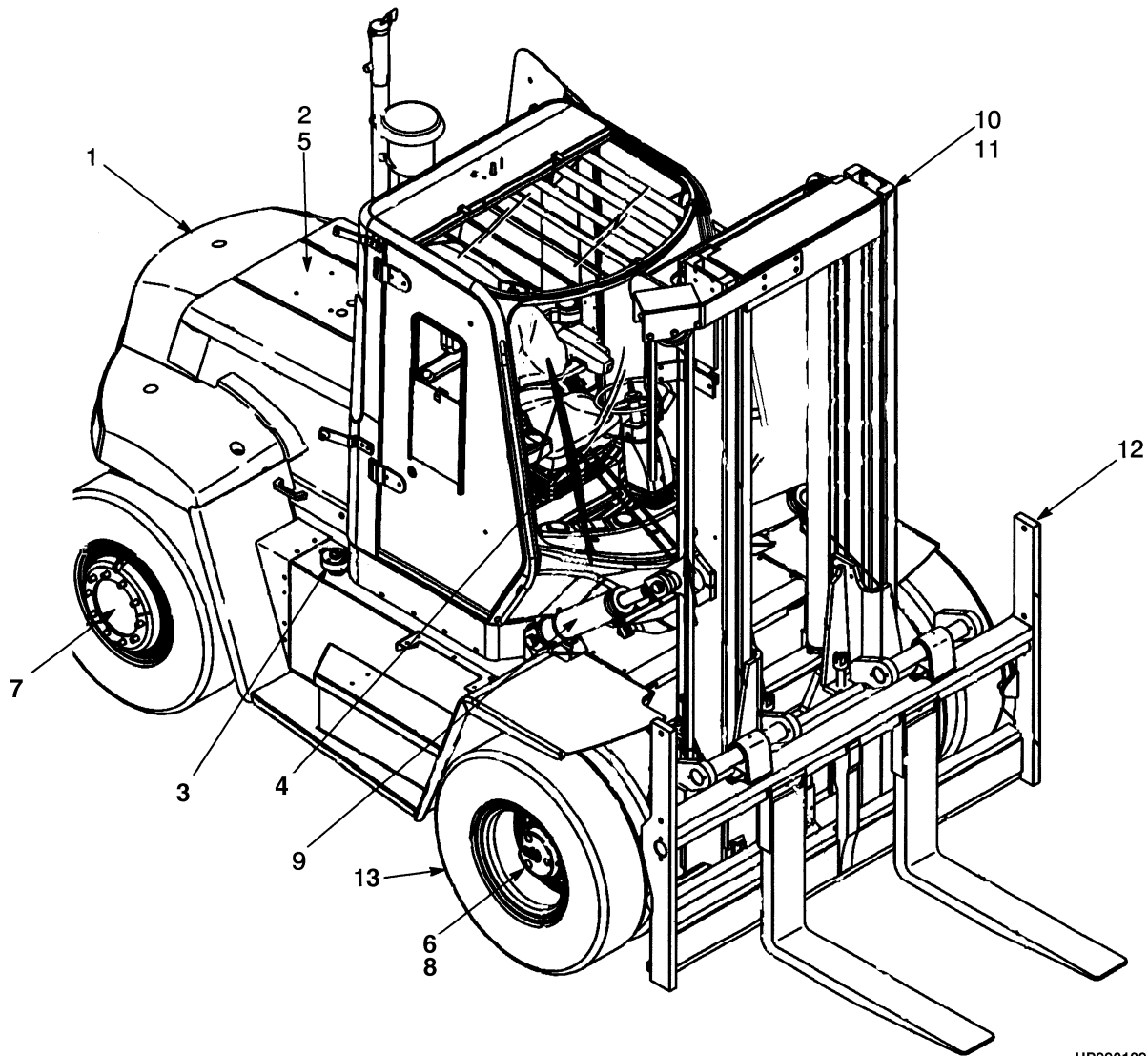
SECTION 1
FRAME

DESCRIPTION	PAGE
AIR CONDITIONING SYSTEM	1-50
AIR DUCT AND ACCESSORIES	
CAB.....	1-76
ARMREST	
PIVOT-UP	1-84
CAB AND ATTACHING PARTS	1-18
CAB AND TILT CYLINDER MOUNTING.....	1-38
CAB HARDWARE AND CONTROL COVER.....	1-74
CONDENSER.....	1-60
COUNTERWEIGHT	1-10
DASH DISPLAY	
CAB.....	1-78
DOOR	
GLASS	
⇒S/N F007E-02789B.....	1-26
STEEL	
⇒S/N F007E-02789B.....	1-30
ELECTRICAL PUMP	
CAB TILT.....	1-46
FLOOR PLATES AND COVERS	
⇒S/N F007E-02438A	1-12
S/N F007E-02439A⇒	1-16
GENERAL TRUCK	1-4
HAND PUMP	
CAB TILT.....	1-44
HEATER AND AIR CONDITIONER	
⇒D/B 11/2003	1-52
HEATER AND AIR CONDITIONER ASSEMBLY	
D/B 11/2003⇒	1-58
HEATER AND AIR CONDITIONER ATTACHMENT	
D/B 11/2003⇒	1-54
HEATER ASSEMBLY	
D/B 11/2003⇒	1-56
HEATER ATTACHING PARTS	1-48
HOOD.....	1-6
INCHING PEDAL AND ACCESSORIES	
CAB.....	1-22
INDICATOR DISPLAY ASSEMBLY.....	1-80
LABELS.....	1-72
SEAT ASSEMBLY	
AIR.....	1-62
MECHANICAL	1-64
STEEL DOOR	
LEFT HAND	
S/N F007E-02790B⇒.....	1-36
RIGHT HAND	
S/N F007E-02790B⇒.....	1-34
TILT CYLINDER	
CAB.....	1-42
TRAINING SEAT	1-70

SECTION 1 FRAME (Continued)

DESCRIPTION	PAGE
WINDOW WASHER AND ARMREST ASSEMBLY	1-82

GENERAL TRUCK (Figure 1-1)

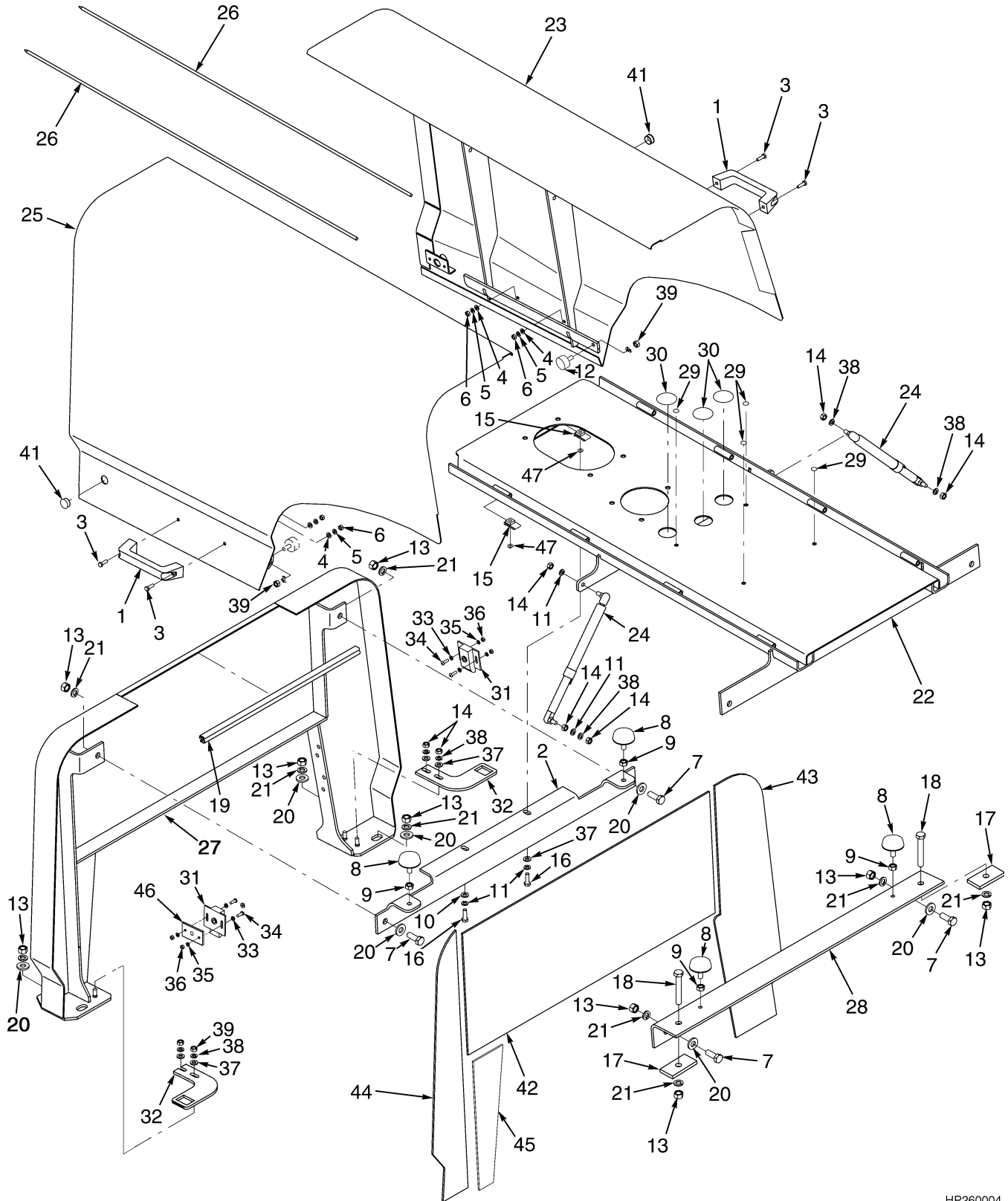


HP990129

GENERAL TRUCK

ITEM	PART NO.	DESCRIPTION	QTY
1	Frame (☞ Figure 1-4)	1
2	Engine Assembly (☞ Figure 2-9)	1
3	Fuel System (☞ Figure 3-1)	1
4	Electrical System (☞ Figure 4-1)	1
5	Transmission (☞ Figure 5-4)	1
6	Drive Axle (☞ Figure 6-1)	1
7	Steering System (☞ Figure 7-5)	1
8	Brake System (☞ Figure 7-1)	1
9	Hydraulic System (☞ Figure 9-1)	1
10	Mast-Two Stage Limited Free-Lift (☞ Figure 9-1)	1
11	Mast-Three Stage Full Free-Lift (☞ Figure 11-1)	1
12	Options (☞ Figure 12-3)	1
13	Numerical Index.....	1

HOOD (Figure 1-2)



HP260004

HOOD

ITEM	PART NO.	DESCRIPTION	QTY
1	362030	Handle	2
2	1477508	Bracket.....	1
3	292501	Capscrew.....	4
4	320156	Washer	4
5	292680	Lockwasher.....	4
6	136687	Nut	4
7	292528	Capscrew.....	4
8	1479870	Screw (Stop).....	4
9	136692	Nut	4
10	320157	Washer	2
11	292681	Lockwasher.....	4
12	1489092	Screw (Stop).....	2
13	216877	Nut	10
14	239503	Nut	4
15	376397	Nut	2
16	18498	Capscrew.....	2
17	1479871	Washer	2
18	292535	Capscrew.....	AR
19	300088	Seal (Door) (Door)	8
20	320162	Washer	8
21	292683	Lockwasher.....	10
22	b 1554210	Channel	1
22	a 1554209	Channel	1
23	b 1478957	Hood (RH)	1
23	a 1478958	Hood (RH)	1
24	376300	Gas Spring.....	2
25	b 1479059	Hood (LH)	1
25	a 1479060	Hood (LH)	1
26	b 1476660	Rod	2
26	a 1476661	Rod	1
27	1489401	Support.....	1
28	1477512	Bracket.....	1
29	1494868	Plug (Without Air Conditioner)	4
30	1494869	Plug (Without Air Conditioner)	3
31	1382332	Latch	2
32	1494480	Bracket.....	2
33	320155	Washer	4
34	296155	Capscrew.....	4
35	292679	Lockwasher.....	4
36	292668	Nut	4
37	320160	Washer	4
38	292682	Lockwasher.....	4
39	136692	Nut	4
40	c 1382766	Wrench	1
41	309666	Plug (Non-EEC).....	2
42	1489402	Liner.....	1
43	1488424	Liner (RH).....	1
44	1488715	Liner (LH).....	1
45	c 1488716	Liner.....	1
46	1494642	Shim	AR
46	1494643	Shim	AR

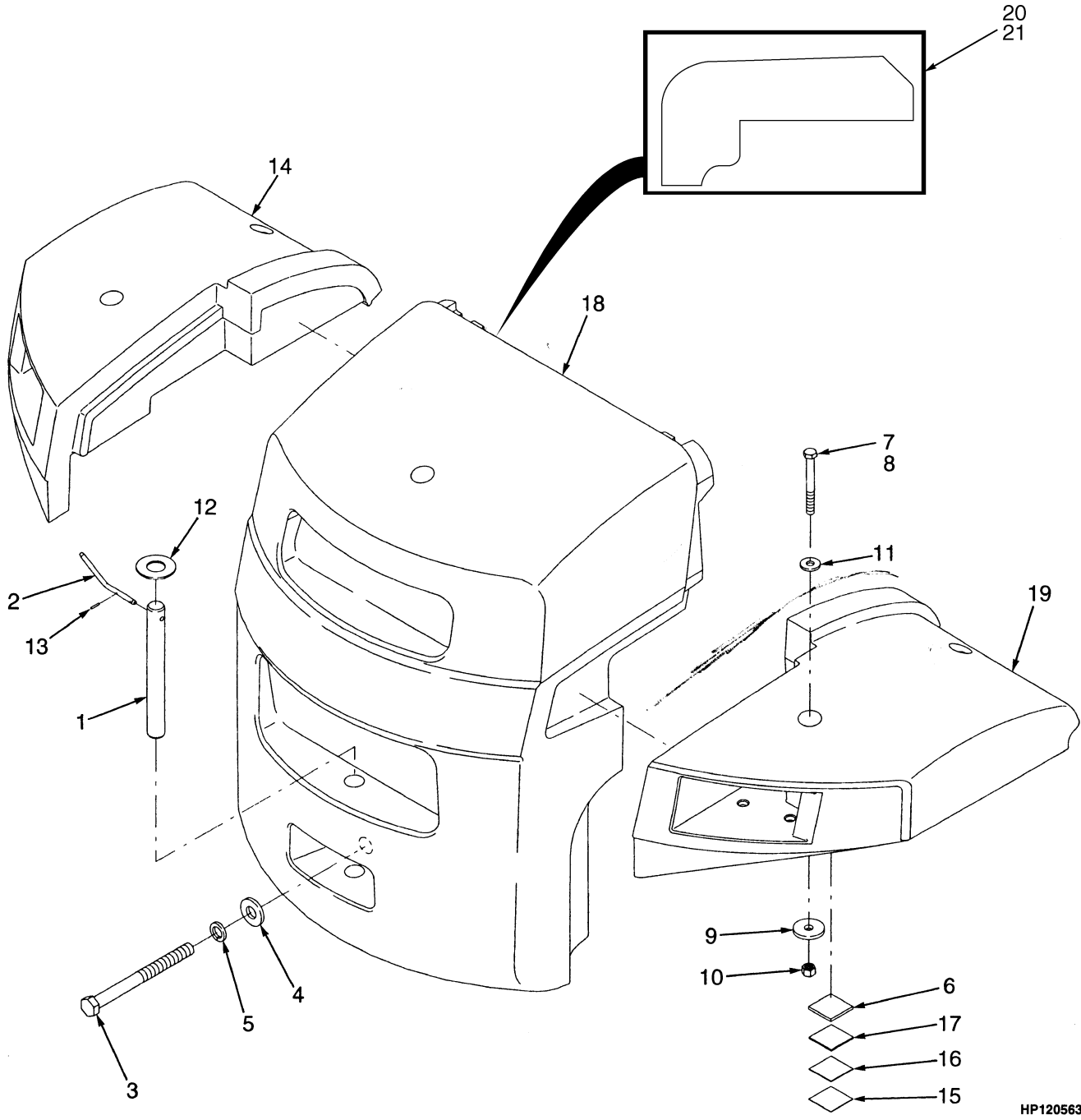
HOOD

ITEM	PART NO.	DESCRIPTION	QTY
46	1494645	Shim	AR
47	320158	Washer	AR

FOOTNOTES:

- a H10.00XM-H12.00XM
- b H8.00XM-H9.00XM
- c Not Illustrated

COUNTERWEIGHT (Figure 1-3)



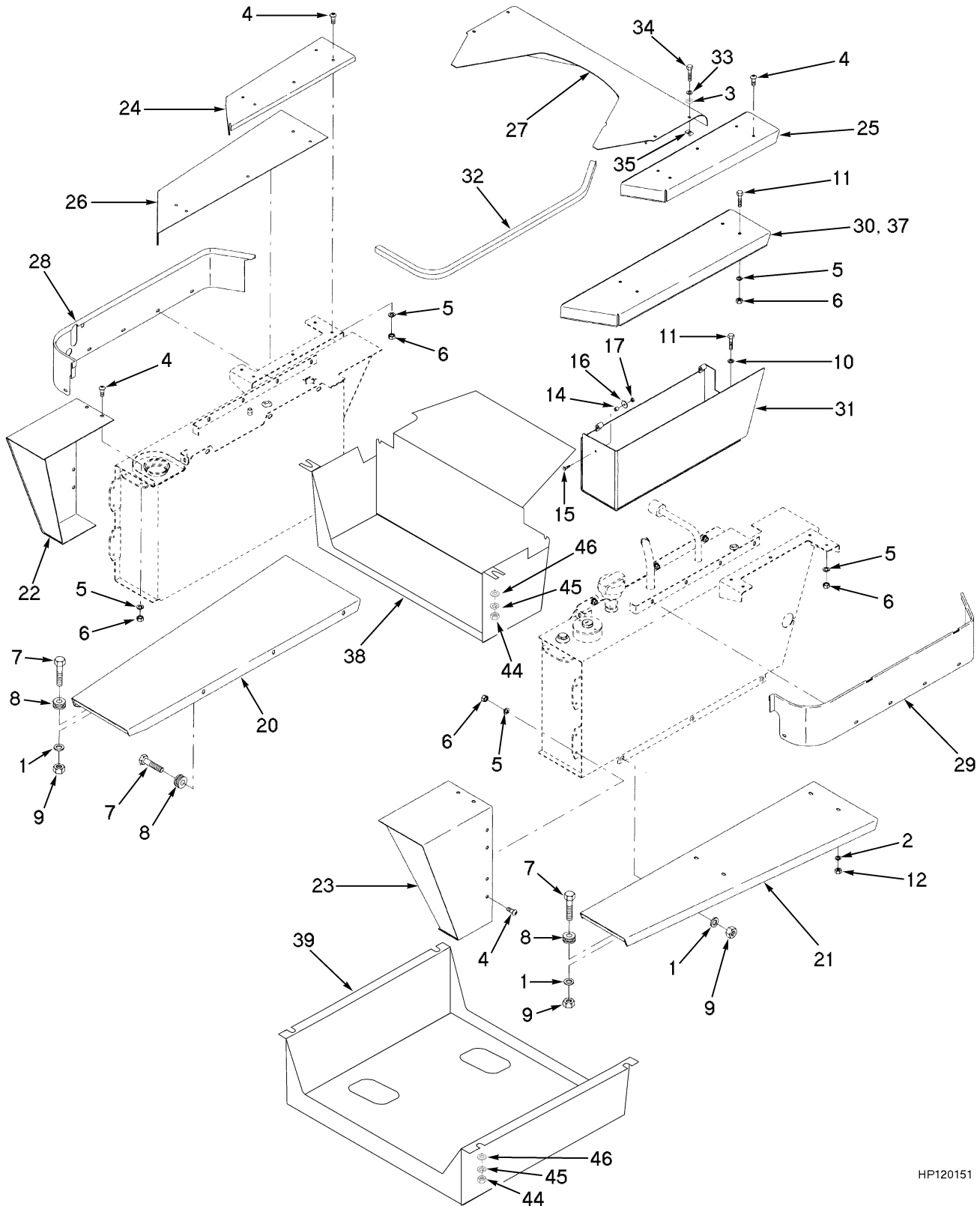
HP120563

COUNTERWEIGHT

ITEM	PART NO.	DESCRIPTION	QTY
1	1467696	Tow Pin	2
2	1495368	Grip	2
3	376319	Capscrew	2
4	149531	Washer	2
5	15168	Lockwasher	2
6	1475214	Shim	2
7	280472	Sealant	2
8	292597	Capscrew	4
9	1475872	Washer	4
10	316829	Nut	4
11	1301086	Washer	4
12	15189	Washer	2
13	302440	Pin	2
14	b 2038853	Fender (LH)	1
14	a 2038855	Fender (LH)	1
15	1475211	Shim	2
16	1475212	Shim	2
17	1475213	Shim	2
18	b 1467624	Counterweight	1
18	a 1467625	Counterweight	1
19	b 2038854	Fender (RH)	1
19	a 2038856	Fender (RH)	1
20	1532632	Liner (LH)	1
21	1532633	Liner (RH)	1

FOOTNOTES:**a** H10.00XM-H12.00XM**b** H8.00XM-H9.00XM

FLOOR PLATES AND COVERS (Figure 1-4) (⇒S/N F007E-02438A)



HP120151

FLOOR PLATES AND COVERS
(⇒S/N F007E-02438A)

ITEM	PART NO.	DESCRIPTION	QTY
1	320162	Washer	46
2	292683	Lockwasher.....	3
3	292681	Lockwasher.....	3
4	296173	Capscrew.....	15
5	292682	Lockwasher.....	30
6	292655	Nut	30
7	246001	Capscrew.....	20
8	216735	Grommet.....	20
9	300937	Locknut	20
10	320160	Washer	8
11	287854	Capscrew.....	8
12	136692	Nut	8
13	16257	Screw.....	1
14	1335831	Bushing.....	1
15	287816	Capscrew.....	1
16	1335832	Washer	1
17	313805	Nut	1
18	288762	Tape (Foam)	AR
19	1319189	Spring (Latch).....	1
20	a 1472660	Running Board (LH).....	1
20	c 1473302	Running Board (LH).....	1
21	a 1472664	Running Board (RH).....	1
21	c 1473304	Running Board (RH).....	1
22	c 1473310	Extension.....	1
22	a 1484244	Extension.....	1
23	c 1473314	Extension.....	1
23	a 1484247	Extension.....	1
24	1475488	Step	1
25	1475489	Step	1
26	1477099	Step	1
27	1485265	Cover	1
28	1485263	Panel (LH).....	1
29	1485264	Panel (RH).....	1
30	1471294	Cover (Battery Box)	1
31	1471296	Battery Box	1
32	1491360	Seal	AR
33	320158	Washer	14
34	296167	Capscrew.....	14
35	1480237	Clip Nut.....	14
36	d 375295	Trim	2
37	1494649	Step	1
38	b 1515431	Cover (Rear)	1
39	b 1515433	Cover (Bottom)	1
40	b 1516035	Liner.....	1
41	b 1516036	Liner.....	1
42	b 1516037	Liner.....	1
43	b 1516038	Liner.....	1
44	b 136692	Nut	8

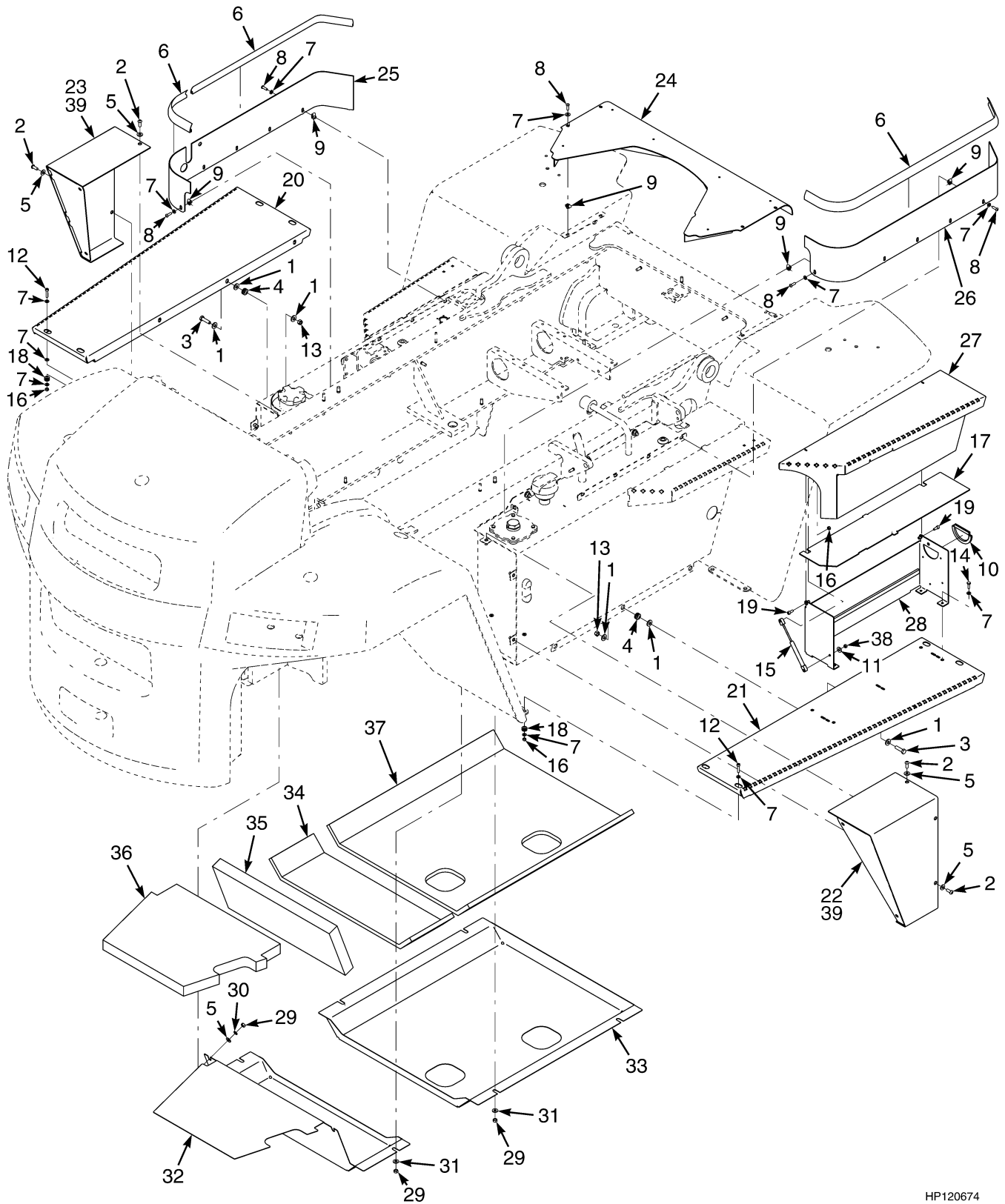
FLOOR PLATES AND COVERS (⇒S/N F007E-02438A)

ITEM	PART NO.	DESCRIPTION	QTY
45	b 292682	Lockwasher.....	8
46	b 320160	Washer	8

FOOTNOTES:

- a H10.00XM-H12.00XM
- b H12.00XM
- c H8.00XM-H9.00XM
- d Not Illustrated

FLOOR PLATES AND COVERS (Figure 1-5) (S/N F007E-02439A⇒)



HP120674

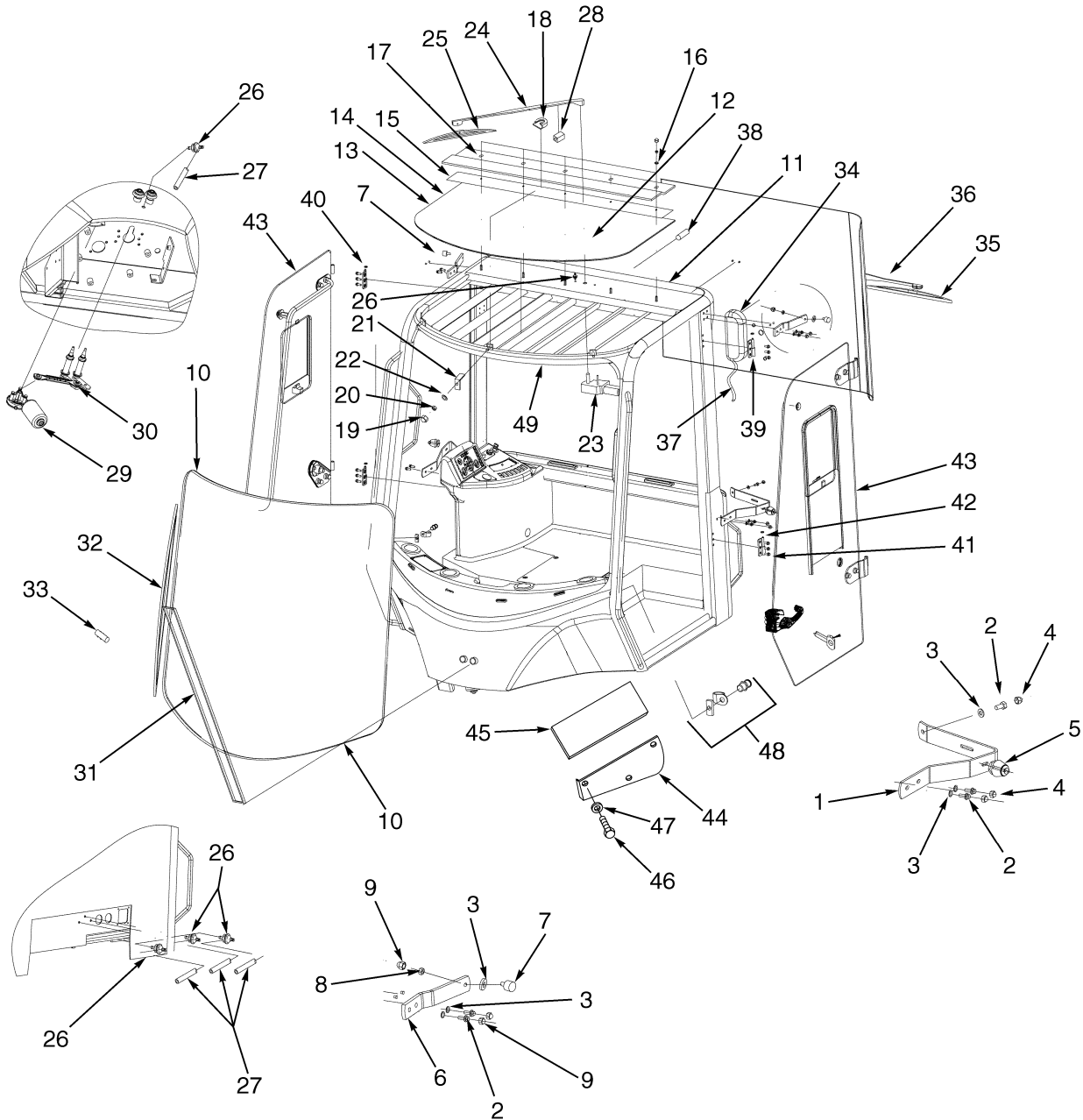
FLOOR PLATES AND COVERS
(S/N F007E-02439A⇒)

ITEM	PART NO.	DESCRIPTION	QTY
1	320162	Washer	18
2	296173	Capscrew.....	6
3	287837	Capscrew.....	6
4	216735	Grommet.....	6
5	320160	Washer	6
6	1491360	Seal	AR
7	320158	Washer	42
8	296167	Capscrew.....	14
9	1480237	Clip Nut.....	14
10	325983	Trim	AR
11	292681	Lockwasher.....	2
12	296013	Capscrew.....	8
13	302402	Locknut	6
14	136749	Capscrew.....	4
15	1532341	Gas Spring.....	1
16	302400	Locknut	10
17	2071326	Cover	1
18	91946	Grommet.....	8
19	1529665	Capscrew.....	2
20	c 1529813	Running Board (LH).....	1
20	a 1529815	Running Board (LH).....	1
21	c 1529814	Running Board (RH)	1
21	a 1529816	Running Board (RH)	1
22	c 1532189	Extension (RH)	1
22	a 1532448	Extension (RH)	1
23	c 1532188	Extension (LH)	1
23	a 1532446	Extension (LH)	1
24	1485265	Cover	1
25	1485263	Panel (LH).....	1
26	1485264	Panel (RH)	1
27	1529751	Cover (Battery Box)	1
28	1532202	Battery Box	1
29	b 136692	Nut	8
30	b 292682	Lockwasher.....	8
31	b 320160	Washer	8
32	b 1515431	Cover	1
33	b 1562200	Cover	1
34	b 1516035	Liner.....	1
35	b 1516036	Liner.....	1
36	b 1516037	Liner.....	1
37	b 1516038	Liner.....	1
38	329069	Nut	2
39	288762	Tape.....	AR

FOOTNOTES:

- a** H10.00XM-H12.00XM
- b** H12.00XM
- c** H8.00XM-H9.00XM

CAB AND ATTACHING PARTS (Figure 1-6)



HP120624

CAB AND ATTACHING PARTS

ITEM	PART NO.	DESCRIPTION	QTY
1	1493310	Bar (Hold-Open)	2
2	1492239	Bolt	8
3	320158	Washer	10
4	1476584	Cap	6
5	1493313	Bumper	2
6	1493315	Bar (Hold-Open) (Bumper)	2
7	1493316	Bumper	2
8	316835	Nut	2
9	1476584	Cap	6
10	Window Assembly (Curved Front)	1
10	1493320	Windshield (Tempered)	1
10	1498750	Seal Kit	1
10	2046118	Windshield (Laminated)	1
10	1498750	Seal Kit	1
10	2046119	Flat Glass Kit (Service Option)	1
10	1498750	Seal Kit	1
10	1493278	Mirror (Interior)	1
11	1493323	Window Assembly (Rear)	1
11	1493324	Window (Rear) (Curved)	1
11	1498750	Seal Kit	1
12	1558024	Window (Skylight)	1
13	1515337	Seal	AR
13	1393463	Seal (Optional)	AR
14	1498339	Sealant	AR
15	1498341	Seal	1
16	1498342	Washer	5
17	1493328	Clip	1
18	1493329	Cover	3
19	1493397	Cover	8
20	316834	Nut	8
21	1498343	Clip	3
22	320156	Washer	3
23	1493344	Wiper Motor	1
24	1498347	Wiper Arm	1
25	1498348	Wiper Blade	1
26	1493336	Connector	6
27	1493337	Hose	9
28	1507003	Nozzle (Top)	1
29	1493332	Wiper Motor	1
30	1493333	Linkage	1
31	1493334	Wiper Arm	1
32	1493335	Wiper Blade	1
33	1507005	Nozzle (Front)	1
34	1493339	Wiper Motor	1
35	1493340	Wiper Blade	1
36	1493341	Wiper Arm	1
37	2043546	Wire Harness (Rear Wiper)	1
38	1498344	Washer (Nozzle)	1
39	1393473	Hinge (LH)	2
39	Pin (Hinge)	2
40	1393474	Hinge (RH)	2

CAB AND ATTACHING PARTS

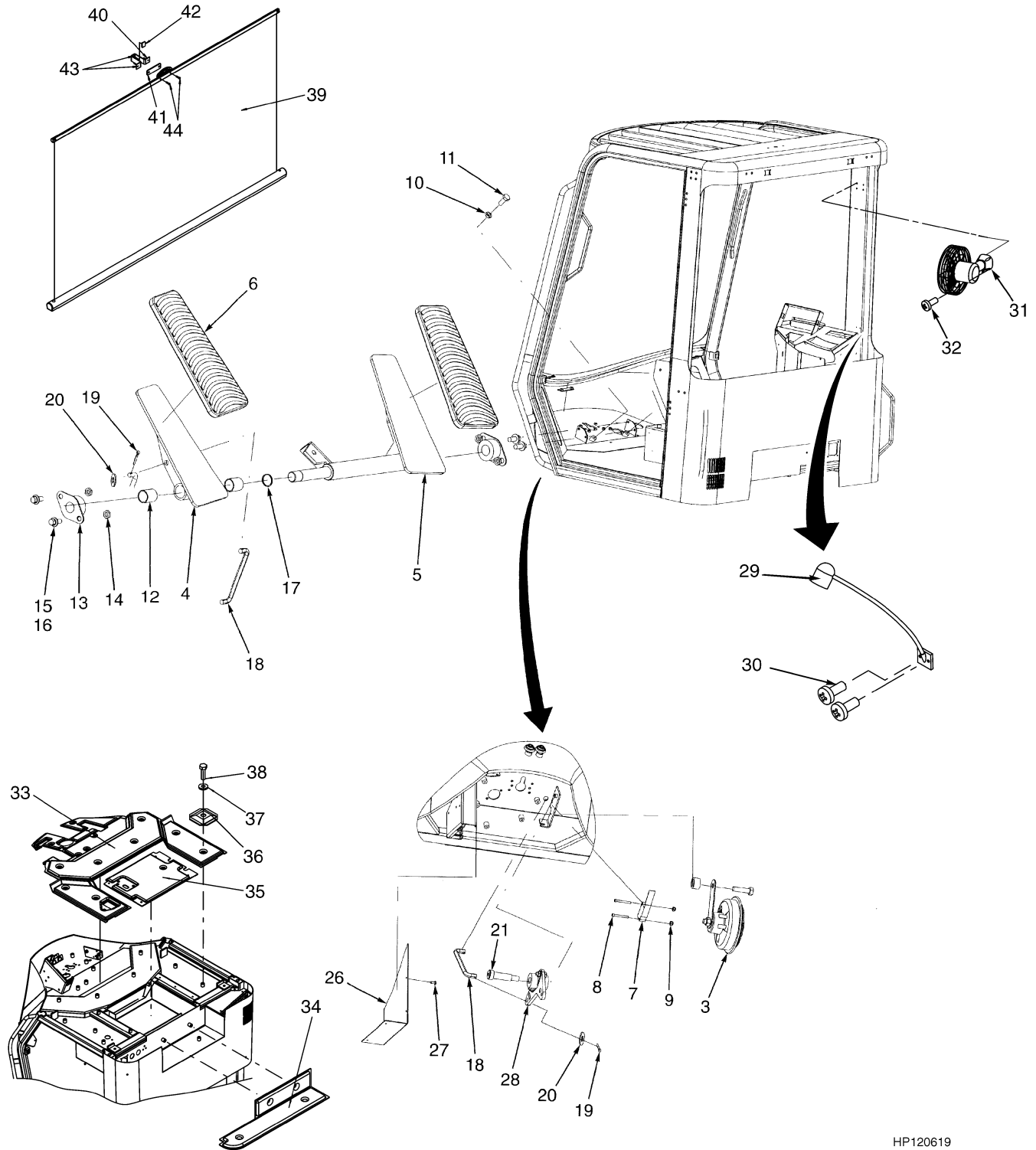
ITEM	PART NO.	DESCRIPTION	QTY
40	Pin (Hinge)	2
41	1493308	Bolt	12
42	1468312	Washer	4
43	1493347	Door Assembly (Glass) (LH) (☞ Figure 1-8)	1
43	1493348	Door Assembly (Glass) (RH) (☞ Figure 1-8)	1
43	a 1480218	Door Assembly (LH) (Steel) (☞ Figure 1-9)	1
43	a 1480219	Door Assembly (RH) (Steel) (☞ Figure 1-9)	1
43	b 1553405	Door Assembly (LH) (Steel) (☞ Figure 1-11)	1
43	b 1553404	Door Assembly (RH) (Steel) (☞ Figure 1-10)	1
44	1493274	Air Filter Cover	1
45	1493276	Air Filter	1
46	293613	Capscrew	3
47	320156	Washer	3
48	1493318	Bolt Assembly (Striker)	2
48	1504953	Block	1
48	1504954	Guard (Striker Bolt)	1
48	1504955	Bolt (Striker)	1
49	1493307	Frame (Cab)	1
	1493309	Mounting (Hold-Open) (Includes Items 1-5, 48)	1
	1493314	Bumper (Hold-Open) (Includes Items 2-3, 6-9)	1
	1493325	Glass Assembly (Roof) (Includes Items 15-22)	1
	1493343	Wiper System (Roof) (Includes Items 23-28)	1
	1493331	Wiper System (Front) (Includes Items 26-27, 29-33)	1
	1493338	Wiper System (Rear) (Includes Items 26-27, 34-38)	1

FOOTNOTES:

a ⇒ S/N F007E02789B

b S/N F007E02790B ⇒

INCHING PEDAL AND ACCESSORIES (Figure 1-7) CAB



HP120619

**INCHING PEDAL AND ACCESSORIES
CAB**

ITEM	PART NO.	DESCRIPTION	QTY
1	a 1492214	Wire Assembly (Ground)	1
2	ab 2042512	Wire Harness (Cab Underfloor) (Perkins Tier I) (☞ Figure 4-18)	1
2	ac 2054814	Wire Harness (Cab Underfloor) (Tier II)	1
3	1483425	Horn (24 Volt)	1
4	1491016	Inching Pedal	1
5	1491015	Shaft (Brake Pedal).....	1
6	1520596	Cover (Pedal).....	2
7	374159	Switch	1
8	1492220	Screw.....	2
9	1492221	Nut	2
10	296128	Nut	2
11	287854	Capscrew.....	2
12	1492224	Bearing	2
13	1492225	Bearing	2
14	239503	Nut	4
15	320158	Washer	8
16	287851	Capscrew.....	4
17	3045683	Shim	1
18	1491020	Rod (Inching Pedal).....	1
19	1492228	Split Pin	2
20	320156	Washer	2
21	340213	Shoulder Bolt	1
22	1492229	Plate (Inching Pedal)	1
23	313860	Bearing	2
24	292501	Capscrew.....	2
25	136687	Nut	2
26	1492233	Cover	1
27	1492234	Screw.....	5
28	1493377	Plate (Inching Pedal)	1
29	1480216	Map Light.....	1
29	1506682	Halogen Light	1
29	1516559	Bulb.....	1
30	1468318	Screw	2
31	1312226	Fan Assembly	1
32	1468319	Screw.....	4
33	1498370	Insulation (Main)	1
34	1498371	Insulation (Rear)	1
35	1498372	Insulation (Heater).....	1
36	1498373	Plate	16
37	320160	Washer	16
38	287854	Capscrew.....	16
39	1506751	Sunshade	1
40	1506750	Clamp	1
41	1506749	Pad (Rubber)	1
42	1506748	Pad (Rubber)	1

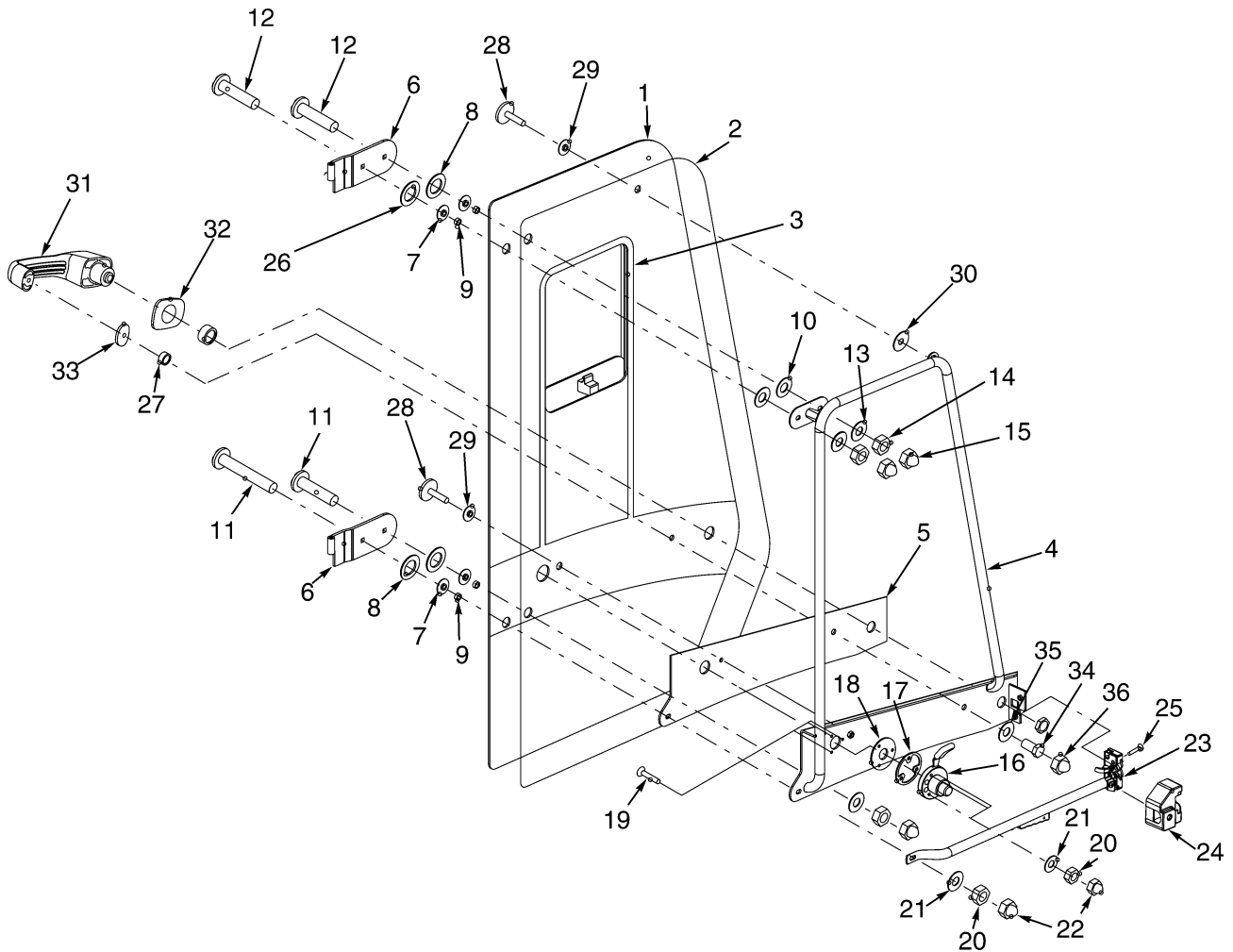
INCHING PEDAL AND ACCESSORIES CAB

ITEM	PART NO.	DESCRIPTION	QTY
43	1493322	Adhesive.....	AR
44	1498357	Screw.....	2

FOOTNOTES:

- a Not Illustrated
- b ⇒ S/N F007E-02438A
- c S/N F007E-02439A ⇒

DOOR (Figure 1-8) GLASS (⇒S/N F007E-02789B)



HP120612

**DOOR
GLASS
(⇒S/N F007E-02789B)**

KEY:

A: Right Hand

B: Left Hand

ITEM	PART NO.	DESCRIPTION	QTY	
			A	B
	1493348	Door Assembly (Glass).....	1	..
	1507006	Key.....	1	..
	1493347	Door Assembly (Glass).....	..	1
	1507006	Key.....	..	1
1	1510214	Door (Glass).....	1	..
1	1510213	Door (Glass).....	..	1
2	1495441	Seal	AR	AR
3	a 1495442	Sliding Window.....	1	1
3	1483226	Latch	1	1
3	1542547	Plate.....	1	1
3	1542548	Shim (Rubber).....	1	1
3	1542549	Screw	2	2
4	1495464	Frame	1	..
4	1495443	Frame	1
5	1495465	Gasket.....	1	..
5	1495444	Gasket.....	..	1
6	1497240	Door Hinge	1	..
6	1495446	Door Hinge	1
7	1495447	Washer.....	4	4
8	1495448	Washer.....	4	4
9	1495449	Bushing	4	4
10	1495450	Washer.....	2	2
11	1495451	Screw	1	1
12	1495452	Screw	3	3
13	320160	Washer.....	4	4
14	1493501	Nut	4	4
15	1493312	Cap	4	4
16	1497241	Hold-Open	1	..
16	1495453	Hold-Open	1
17	1495456	Washer	1	1
18	1495454	Seal	1	1
19	1495455	Screw	3	3
20	316834	Nut.....	3	3
21	320156	Washer	3	3
22	1493397	Cover.....	3	3
23	1495434	Latch And Handle.....	1	..
23	1495437	Latch And Handle.....	..	1
24	1495435	Cover.....	1	..
24	1495438	Cover.....	..	1
25	296229	Capscrew	2	2
26	1495459	Bushing	1	1
27	1495460	Bushing	1	1
28	1495462	Bolt	2	2
29	1495463	Washer	2	2
30	1468316	Washer	1	1

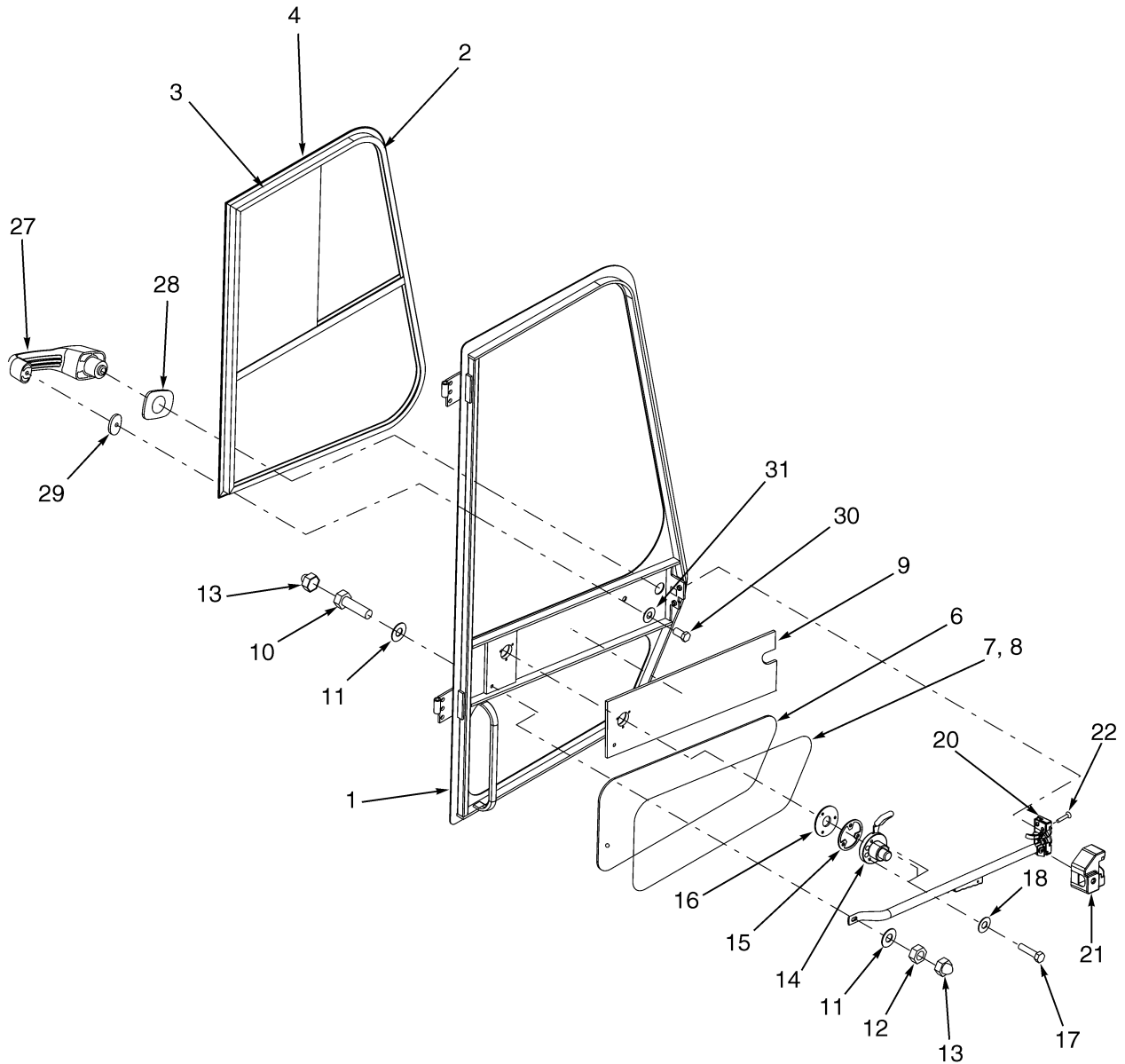
**DOOR
GLASS
(⇒S/N F007E-02789B)**

ITEM	PART NO.	DESCRIPTION	QTY	
			A	B
31	1495371	Handle (Push Button).....	1	1
31	1507006	Key	1	1
32	1495372	Seal	1	1
33	1495431	Seal	1	1
34	1495432	Bolt	1	1
35	1468321	Washer	1	1
36	1493397	Cover	1	1
37	1495465	Gasket (Not Illustrated)	1	..
	1495436	Latch Assembly (Includes Items 23-30)	1	..
	1495439	Latch Assembly (Includes Items 23-30)	1
	1495433	Push Button Handle Assembly (Includes Items 31-36).....	1	1

FOOTNOTES:

a Included with 1510214 and 1510213

DOOR (Figure 1-9) STEEL (⇒S/N F007E-02789B)



HP120629

**DOOR
STEEL
(⇒S/N F007E-02789B)**

KEY:

A: Right Hand

B: Left Hand

ITEM	PART NO.	DESCRIPTION	QTY	
			A	B
	1480218	Door Assembly (LH)	1
	1507006	Key.....	..	1
	1480219	Door Assembly (RH).....	1	..
	1507006	Key.....	1	..
1	1506803	Frame	1	..
1	1506798	Frame	1
1	1515337	Seal	AR	AR
2	1506804	Sliding Window.....	1	..
2	1506799	Sliding Window.....	..	1
3	1393476	Activator	4	4
4	1393477	Primer.....	AR	AR
5	a 1393475	Glue.....	AR	AR
6	1506800	Window (Door)	1	1
7	1506801	Terminal.....	AR	AR
8	1393466	Seal	AR	AR
9	1506805	Encasement (Door)	1	..
9	1506802	Encasement (Door)	1
10	287854	Capscrew	1	1
11	320160	Washer	2	2
12	1493501	Nut.....	1	1
13	1493312	Cap.....	2	2
14	1497241	Hold-Open	1	..
14	1495453	Hold-Open	1
15	1495456	Washer	1	1
16	1495454	Seal	1	1
17	1495432	Bolt	3	3
18	320156	Washer	3	3
19	a 1507006	Key	1	1
20	1495434	Latch And Handle.....	1	..
20	1495437	Latch And Handle.....	..	1
21	1495435	Cover.....	1	..
21	1495438	Cover.....	..	1
22	296229	Capscrew	2	2
23	a 1495459	Bushing	1	1
24	a 1495460	Bushing	1	1
25	a 1495462	Bolt	2	2
26	a 1495463	Washer	2	2
27	1495371	Handle (Push Button).....	1	1
28	1495372	Seal	1	1
29	1495431	Seal	1	1
30	1495432	Bolt	1	1
31	1468321	Washer	1	1
	1495433	Push Button Handle Assembly (Includes Items 27-31).....	1	1

**DOOR
STEEL
(⇒S/N F007E-02789B)**

ITEM	PART NO.	DESCRIPTION	QTY	
			A	B
	1495436	Latch Assembly (Includes Items 20-31)	1	..
	1495439	Latch Assembly (Includes Items 20-31)	1

FOOTNOTES:

a Not Illustrated

BUY NOW

**Then Instant Download
the Complete Manual
Thank you very much!**