

PARTS MANUAL

**H6.00-7.00XL
(G006)**

CUSTOMER EDITION

HYSTER

SECTIONS

1	FRAME
2	ENGINES
3	FUEL SYSTEM
4	ELECTRICAL SYSTEM
5	TRANSMISSION
6	STEERING SYSTEM
7	BRAKE SYSTEM
8	HYDRAULIC SYSTEM
9	MAST-TWO STAGE LIMITED FREE-LIFT
10	MAST-THREE STAGE FULL FREE-LIFT
11	OPTIONS
12	NUMERICAL INDEX

This Parts Manual is divided into 12 major sections which are listed above. Quick reference to these sections can be made by placing the right thumb on the tab of the desired section, bending the book back and thumbing the pages to the corresponding tab.

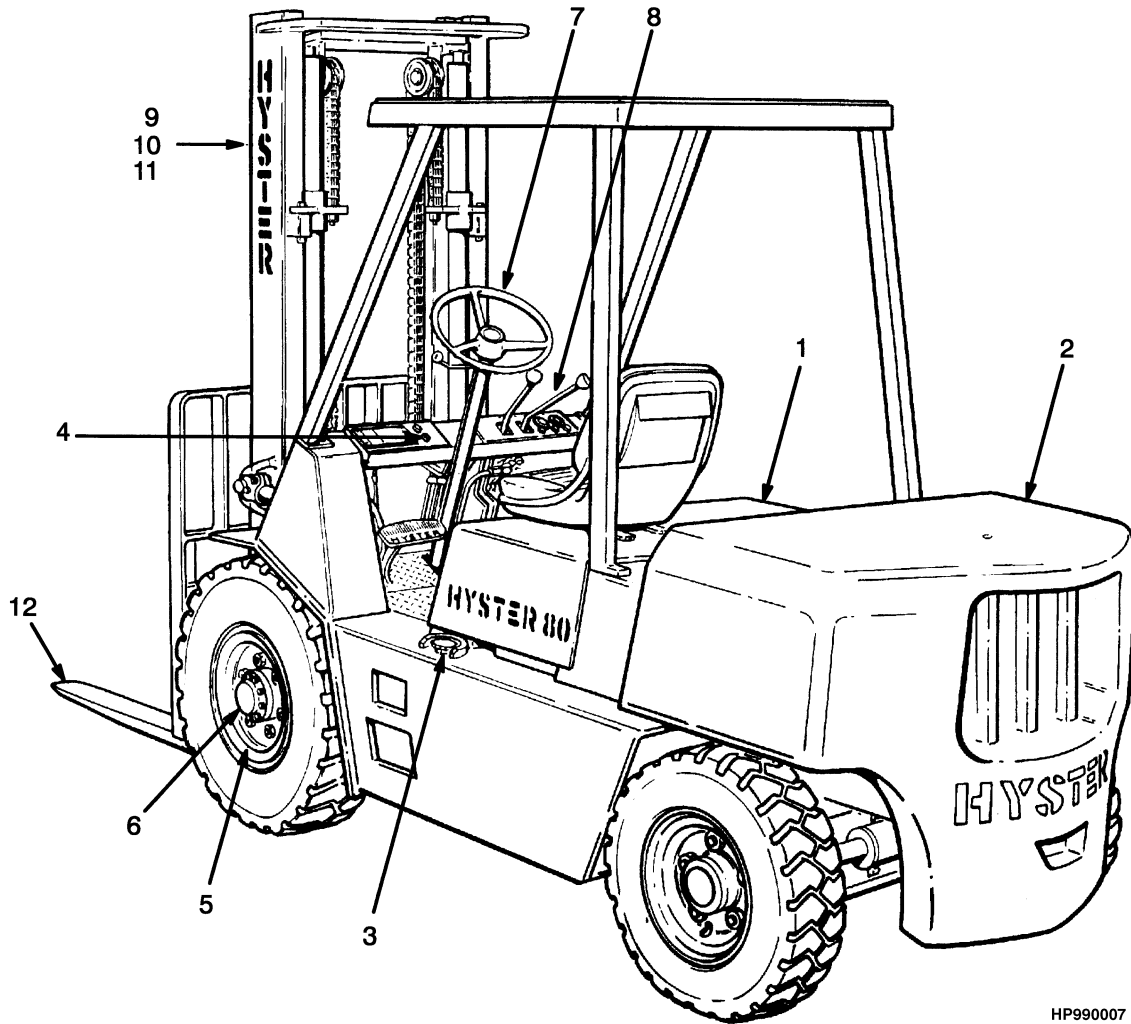
1

FRAME

**SECTION 1
FRAME**

DESCRIPTION	PAGE
COUNTERWEIGHT	1-22
COWL AND FLOOR PLATES	1-16
FORKS	
PIN TYPE.....	1-26
FULL SUSPENSION SEAT	
PENDING PER ECN 74953⇒.....	1-12
SHEET 1 OF 2	
⇒PENDING PER ECN 74953	1-8
SHEET 2 OF 2	
⇒PENDING PER ECN 74953	1-10
GENERAL TRUCK	1-2
HOOD.....	1-14
LABELS.....	1-18
LOAD BACKREST EXTENSION.....	1-24
NON-SUSPENSION SEAT	
PENDING PER ECN 74953⇒.....	1-6
⇒PENDING PER ECN 74953.....	1-4
OVERHEAD GUARD.....	1-20

GENERAL TRUCK (Figure 1-1)

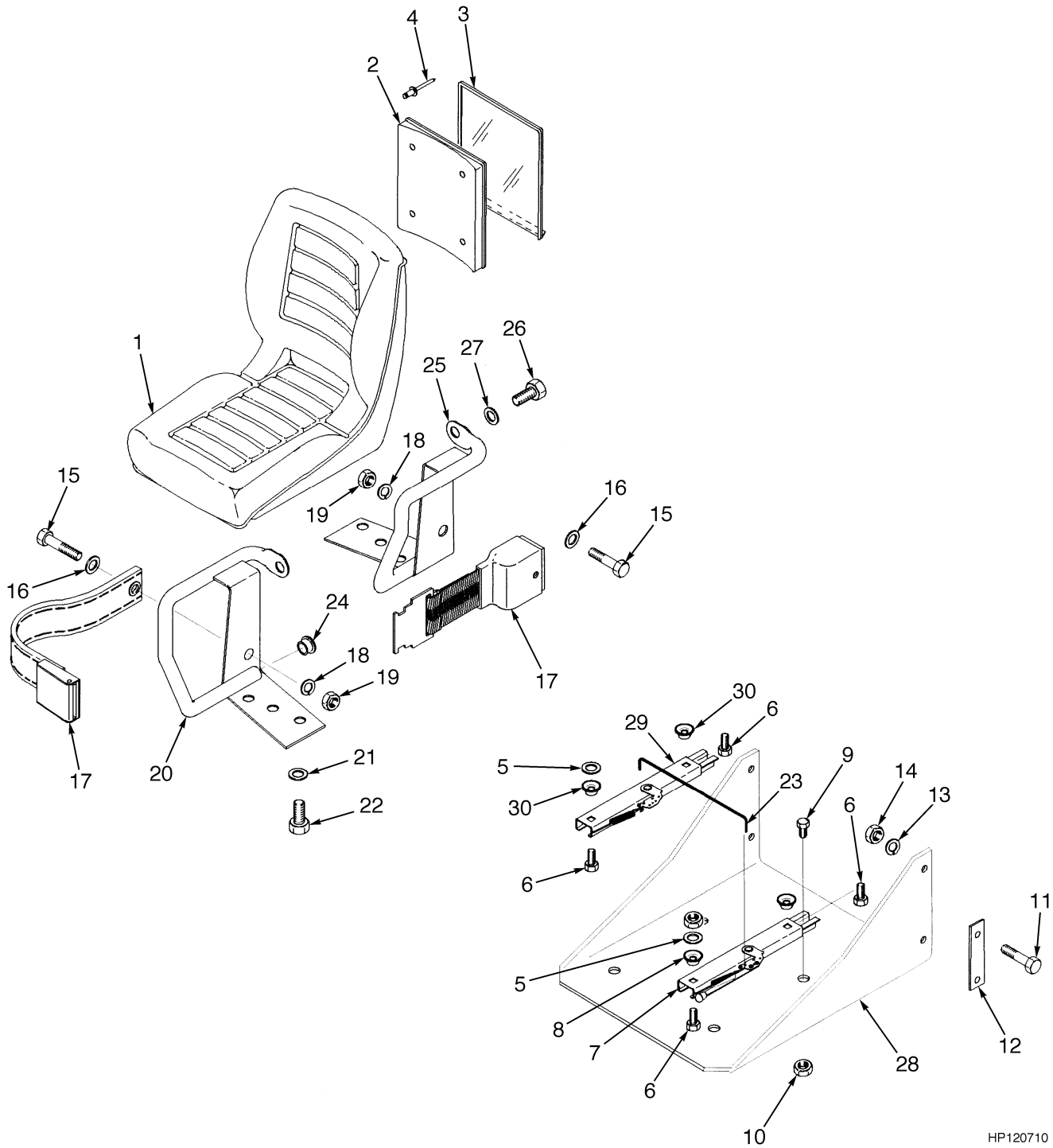


HP990007

GENERAL TRUCK

ITEM	PART NO.	DESCRIPTION	QTY
1	Counterweight (☞ Figure 1-11)	1
2	Engine Assembly (☞ Figure 2-10)	1
3	Fuel Assembly (☞ Figure 3-4)	1
4	Electrical System (☞ Figure 4-1)	1
5	Transmission (☞ Figure 5-1)	1
6	Brake System (☞ Figure 7-1)	1
7	Steering System (☞ Figure 6-1)	1
8	Hydraulic System (☞ Figure 8-1)	1
9	Mast-Two Stage Limited Free-Lift (☞ Figure 9-1)	1
10	Mast-Three Stage Full Free-Lift (☞ Figure 10-1)	1
11	Optional Equipment (☞ Figure 11-1)	1
12	Fork (☞ Figure 1-13)	1

NON-SUSPENSION SEAT (Figure 1-2) (⇒PENDING PER ECN 74953)



HP120710

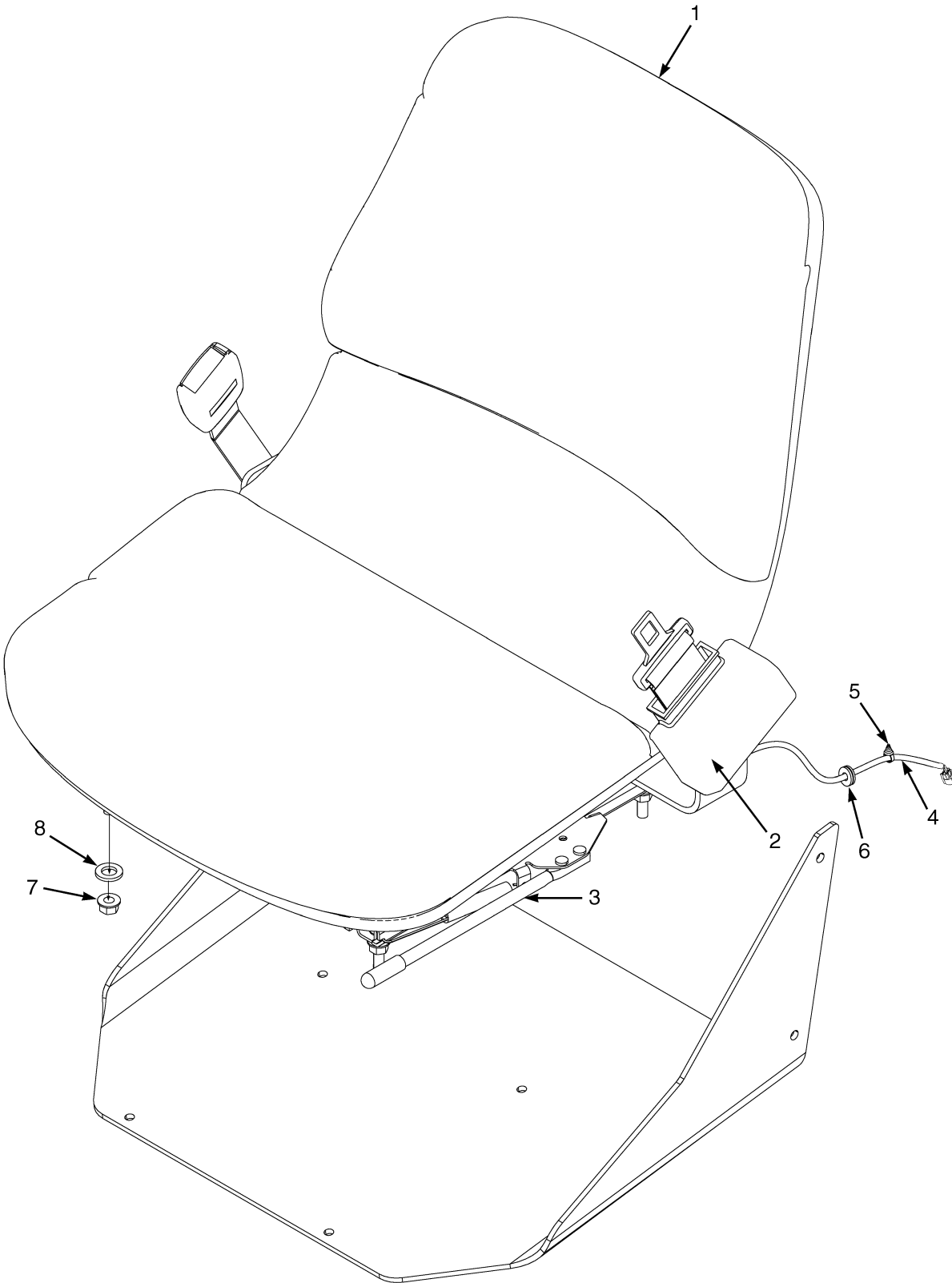
NON-SUSPENSION SEAT
(⇒PENDING PER ECN 74953)

ITEM	PART NO.	DESCRIPTION	QTY
1	377901	Seat (Vinyl)	1
1	364911	Seat	1
2	335988	Base (Information Case)	1
3	335991	Cover (Information Case)	1
4	222029	Rivet	4
5	221733	Washer	2
6	364914	Capscrew	4
7	335553	Seat Rail	1
8	204114	Spacer	4
9	16836	Capscrew	4
10	145639	Nut	4
11	287854	Capscrew	4
12	385085	Spacer	2
13	292682	Lockwasher	4
14	136692	Nut	4
15	379199	Capscrew	2
16	379697	Washer	2
17	1374750	Seat Belt	1
18	379697	Washer	4
19	379698	Nut	4
20	364807	Hip Restraint (RH)	1
21	18515	Washer	4
22	18727	Capscrew	4
23	1300107	Rod	1
24	364854	Plug	2
25	364808	Hip Restraint (LH)	1
26	379197	Capscrew	2
27	379198	Washer	2
28	ac 1479677	Seat Pan	1
28	ad 1607247	Seat Pan	1
28	bc 1479678	Seat Pan	1
28	bd 1607246	Seat Pan	1
29	383116	Seat Rail	1
30	204114	Spacer	4

FOOTNOTES:

- a** With Cab
- b** Without Cab
- c** ⇒ PENDING PER ECN 74953
- d** PENDING PER ECN 74953 ⇒

NON-SUSPENSION SEAT (Figure 1-3) (PENDING PER ECN 74953⇒)



BP120182

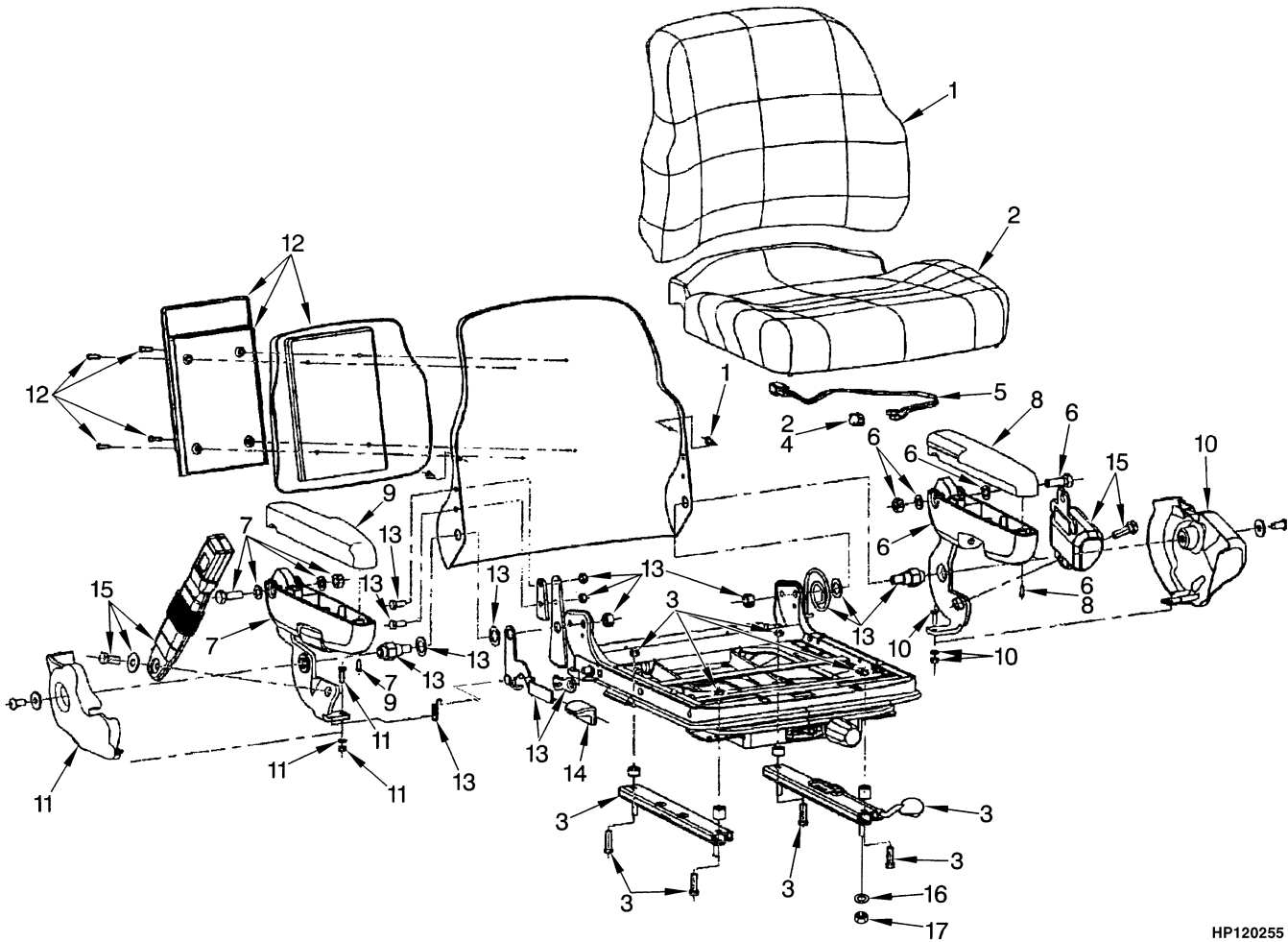
**NON-SUSPENSION SEAT
(PENDING PER ECN 74953⇒)**

ITEM	PART NO.	DESCRIPTION	QTY
	1593409	Non-Suspension Seat (Vinyl).....	1
1	1563351	Cushions (Vinyl)	1
	a 1563215	Sensor (Operator Presence)	1
2	1598504	Seat Belt Kit.....	1
3	1459173	Slide Kit	1
4	2075429	Wire Harness	1
5	1509890	Clip	1
6	1561015	Grommet.....	2
7	15175	Washer	4
8	145639	Nut	4
9	1607246	Seat Pan (With Overhead Guard).....	1
9	1607247	Seat Pan (With Cab).....	1
10	287854	Capscrew.....	4
11	292682	Lockwasher.....	4
12	136692	Nut	4

FOOTNOTES:

a Not Illustrated

FULL SUSPENSION SEAT (Figure 1-4) SHEET 1 OF 2 (⇒PENDING PER ECN 74953)

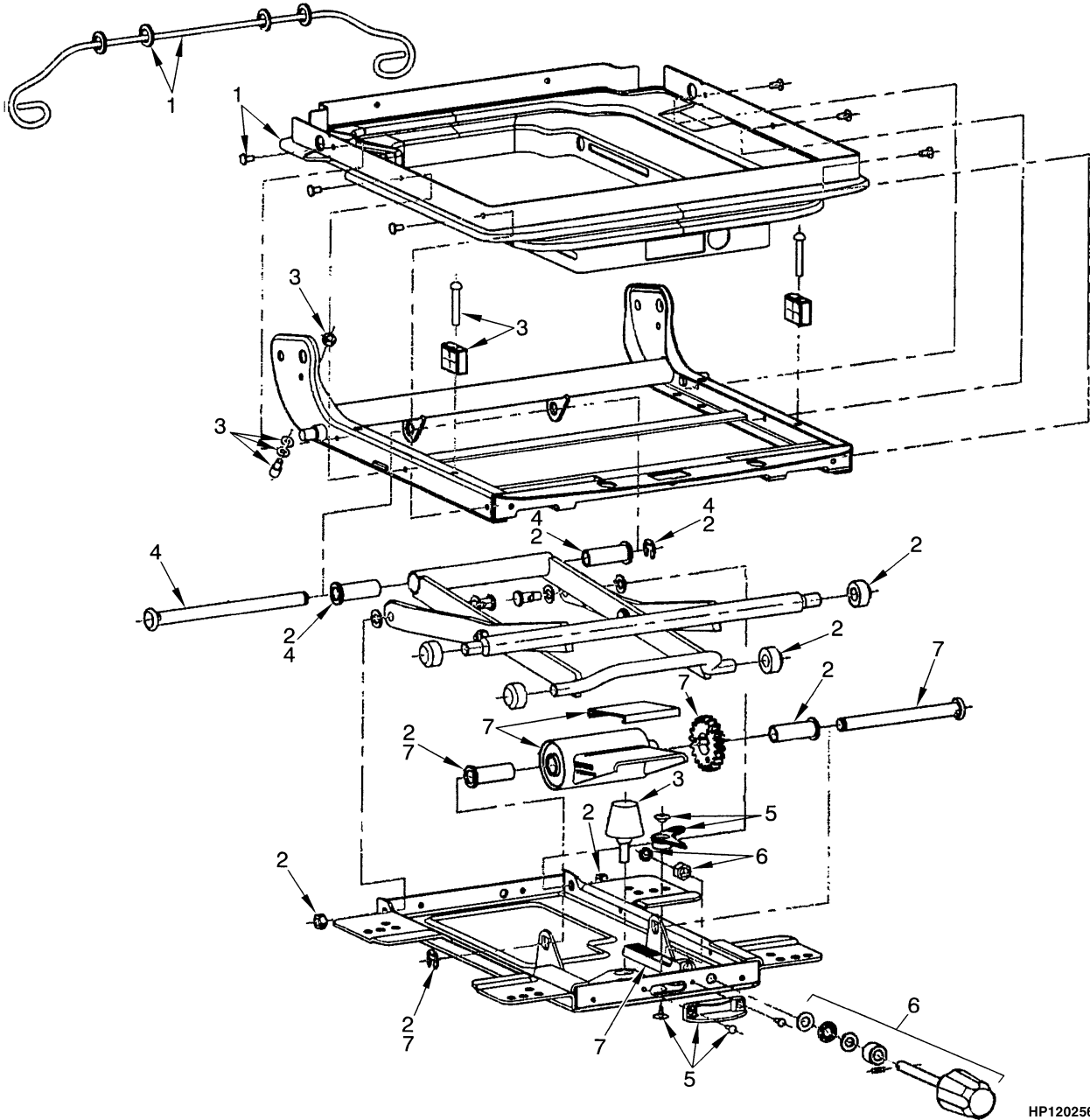


HP120255

**FULL SUSPENSION SEAT
SHEET 1 OF 2
(=>PENDING PER ECN 74953)**

ITEM	PART NO.	DESCRIPTION	QTY
	1466006	Full Suspension Seat (Vinyl Cover)	1
	1466007	Full Suspension Seat (Fabric Cover)	1
1	1467533	Back Cushion (Vinyl)	1
1	1467535	Back Cushion (Fabric)	1
2	1494076	Seat Cushion (Vinyl).....	1
2	1467536	Seat Cushion (Fabric)	1
3	1467513	Slider Kit	1
4	1467514	Switch (Seat)	1
5	1467515	Wire Harness	1
6	1467516	Armrest (LH) (LH).....	1
7	1467517	Armrest (RH) (RH)	1
8	1467518	Cap (LH).....	1
9	1467519	Cap (RH)	1
10	1467520	Cover (LH)	1
11	1467521	Cover (RH)	1
12	1467522	Holder Kit.....	1
13	1467530	Recliner Kit.....	1
14	1467531	Recliner Knob.....	1
15	1467532	Seat Belt Kit.....	1
16	15175	Washer	4
17	145639	Nut.....	4

FULL SUSPENSION SEAT (Figure 1-5) SHEET 2 OF 2 (⇒PENDING PER ECN 74953)

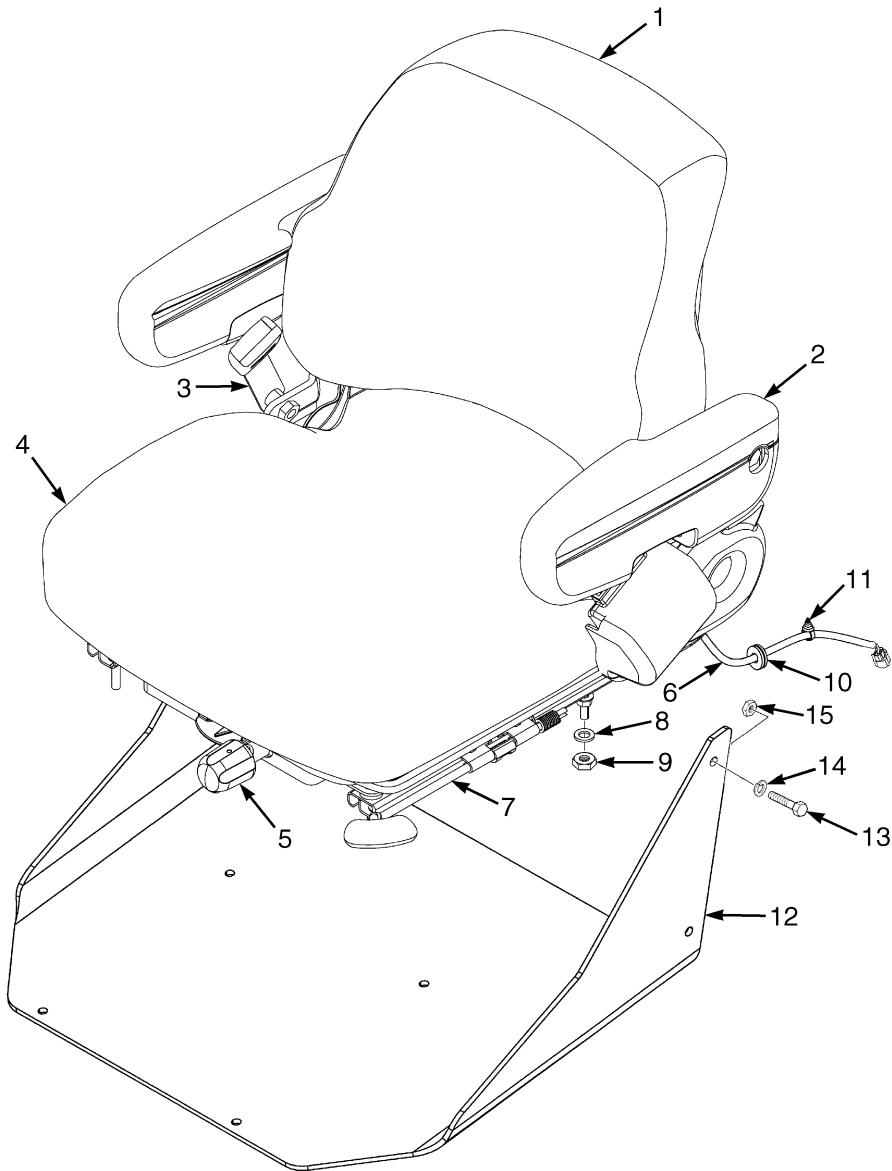


HP120256

**FULL SUSPENSION SEAT
SHEET 2 OF 2
(⇒PENDING PER ECN 74953)**

ITEM	PART NO.	DESCRIPTION	QTY
	1466006	Full Suspension Seat (Vinyl Cover)	1
	1466007	Full Suspension Seat (Fabric Cover)	1
1	1467523	Boot Kit.....	1
2	1467524	Roller and Bearing Kit	1
3	1467525	Bumper and Stop Kit	1
4	1467526	Bearing Shaft Kit	1
5	1467527	Weight Adjuster Indicator Kit	1
6	1467528	Knob Kit.....	1
7	1467529	Suspension Spring Kit.....	1

FULL SUSPENSION SEAT (Figure 1-6) (PENDING PER ECN 74953⇒)



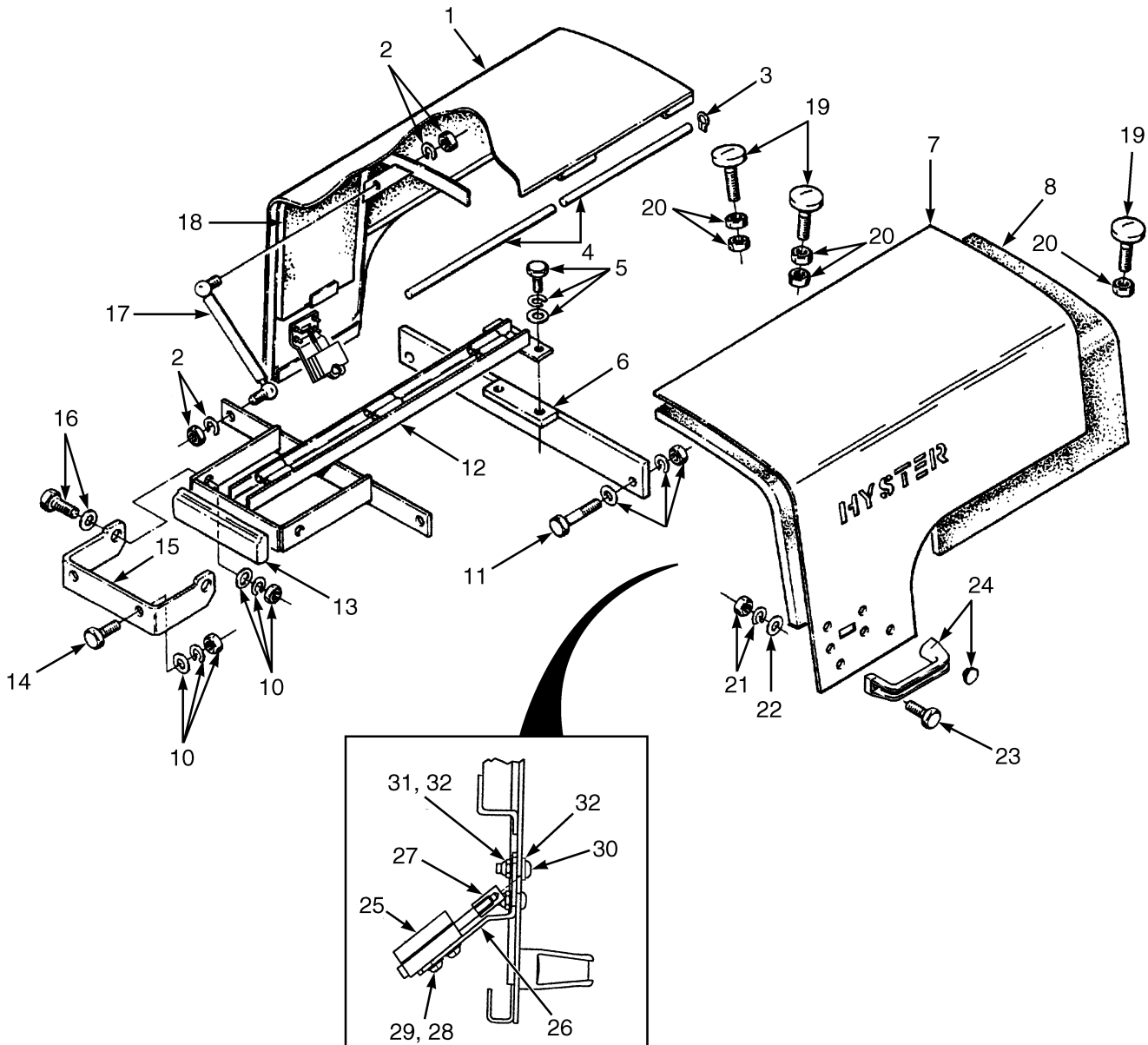
BP120184

**FULL SUSPENSION SEAT
(PENDING PER ECN 74953⇒)**

ITEM	PART NO.	DESCRIPTION	QTY
	1593413	Full Suspension Seat (Vinyl).....	1
1	1470152	Back Cushion (Vinyl) (Vinyl).....	1
2	1563230	Arm Cushion (LH)	1
2	1563231	Arm Cushion (RH).....	1
3	1598504	Seat Belt Kit.....	1
4	1563207	Seat Cushion (Vinyl).....	1
	a 1563208	Sensor (Operator Presence)	1
5	1470163	Weight Adjuster Kit.....	1
6	2075429	Wire Harness	1
7	1470161	Slide Kit	1
	a 1483828	Shock Kit	1
8	15175	Washer	4
9	145639	Nut	4
10	1561015	Grommet.....	2
11	1509890	Clip	1
12	1607247	Seat Pan (With Cab).....	1
12	1607246	Seat Pan (With Overhead Guard).....	1
13	287854	Capscrew.....	4
14	292682	Lockwasher.....	4
15	136692	Nut	4

FOOTNOTES:**a** Not Illustrated

HOOD (Figure 1-7)

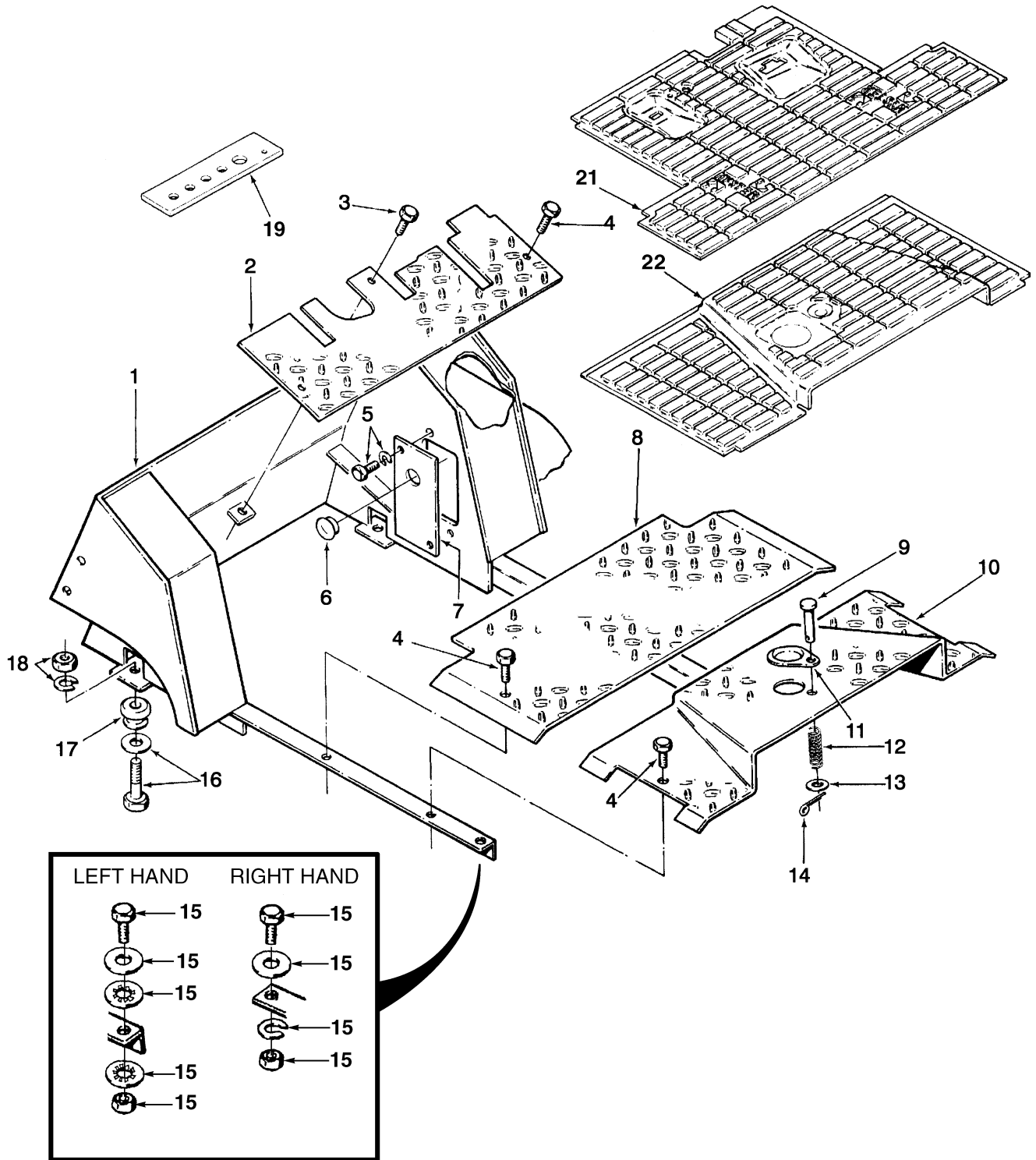


HP120271

HOOD

ITEM	PART NO.	DESCRIPTION	QTY
1	1392568	Hood (RH)	1
2	1569425	Nut	4
2	292681	Lockwasher.....	4
3	367228	Ring	4
4	367227	Pin	2
5	136985	Capscrew.....	2
5	292682	Lockwasher.....	2
5	296421	Washer	2
6	367233	Crossmember	1
7	1392566	Hood (LH)	1
8	377624	Liner.....	2
9	1392558	Liner (LH).....	1
10	136692	Nut	6
10	292682	Lockwasher.....	6
10	296421	Washer	6
11	292519	Capscrew.....	2
12	367235	Channel	1
13	261165	Tape	AR
14	136985	Capscrew.....	2
15	377350	Bracket.....	1
16	287860	Capscrew.....	2
16	296421	Washer	2
17	353021	Gas Spring.....	2
18	1392560	Liner (RH)	1
19	367251	Stop Screw	4
20	15055	Nut	6
21	136687	Nut	4
21	292680	Lockwasher.....	4
22	320156	Washer	4
23	292501	Capscrew.....	4
24	362030	Handle	2
25	1377478	Latch	2
26	1392570	Plate	2
27	1392571	Knob	2
28	296161	Capscrew.....	8
29	292680	Lockwasher.....	8
30	296159	Capscrew.....	8
31	316834	Nut	8
32	1476421	Washer	4

COWL AND FLOOR PLATES (Figure 1-8)



BP120058

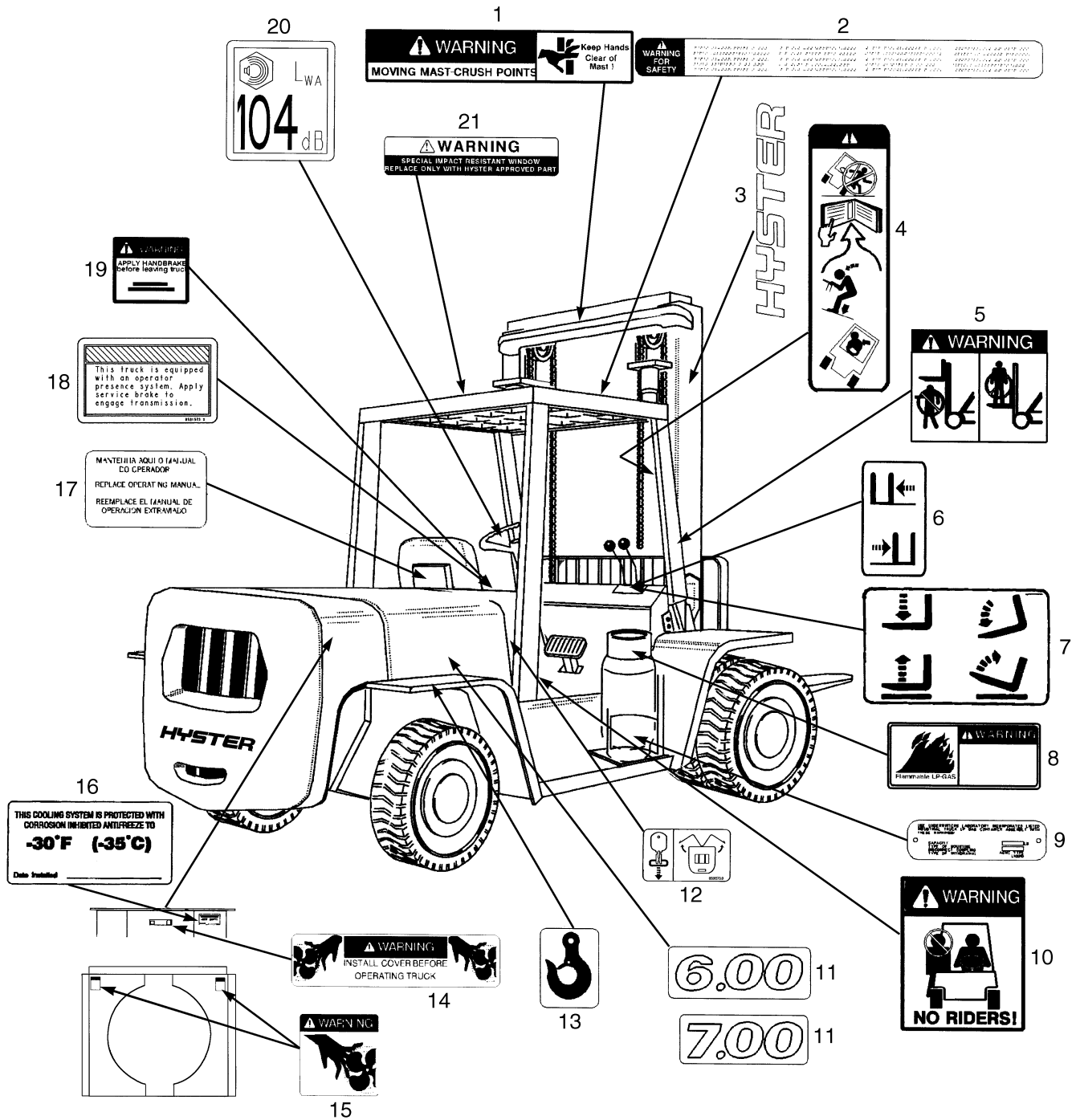
COWL AND FLOOR PLATES

ITEM	PART NO.	DESCRIPTION	QTY
1	1346710	Cowl.....	1
2	1466348	Floorplate.....	1
3	329067	Screw.....	1
4	329067	Screw.....	6
5	136681	Capscrew.....	4
5	292681	Lockwasher.....	4
6	374002	Plug	2
7	342980	Plate	2
8	357276	Floorplate.....	1
9	b 177590	Rod End Pin	1
10	b 357273	Floorplate.....	1
11	b 313815	Plate	1
12	b 137122	Spring	1
13	b 320157	Washer	2
14	b 15212	Cotter Pin.....	1
15	136692	Nut	2
15	136985	Capscrew.....	2
15	292682	Lockwasher (RH).....	1
15	296361	Washer (LH)	2
15	320159	Washer	2
16	292533	Capscrew.....	2
16	300939	Washer	2
17	129962	Mount.....	2
18	216877	Nut	2
18	292683	Lockwasher.....	2
19	1479752	Seal	1
20	370278	Seal (Not Illustrated).....	1
21	a 1312722	Floormat (Front).....	1
21	b 1312722	Floormat (Front).....	1
22	a 369525	Floormat (Rear)	1
22	b 374004	Floormat (Rear)	1

FOOTNOTES:

- a** With Cab
b Without Cab

LABELS (Figure 1-9)



HP120734

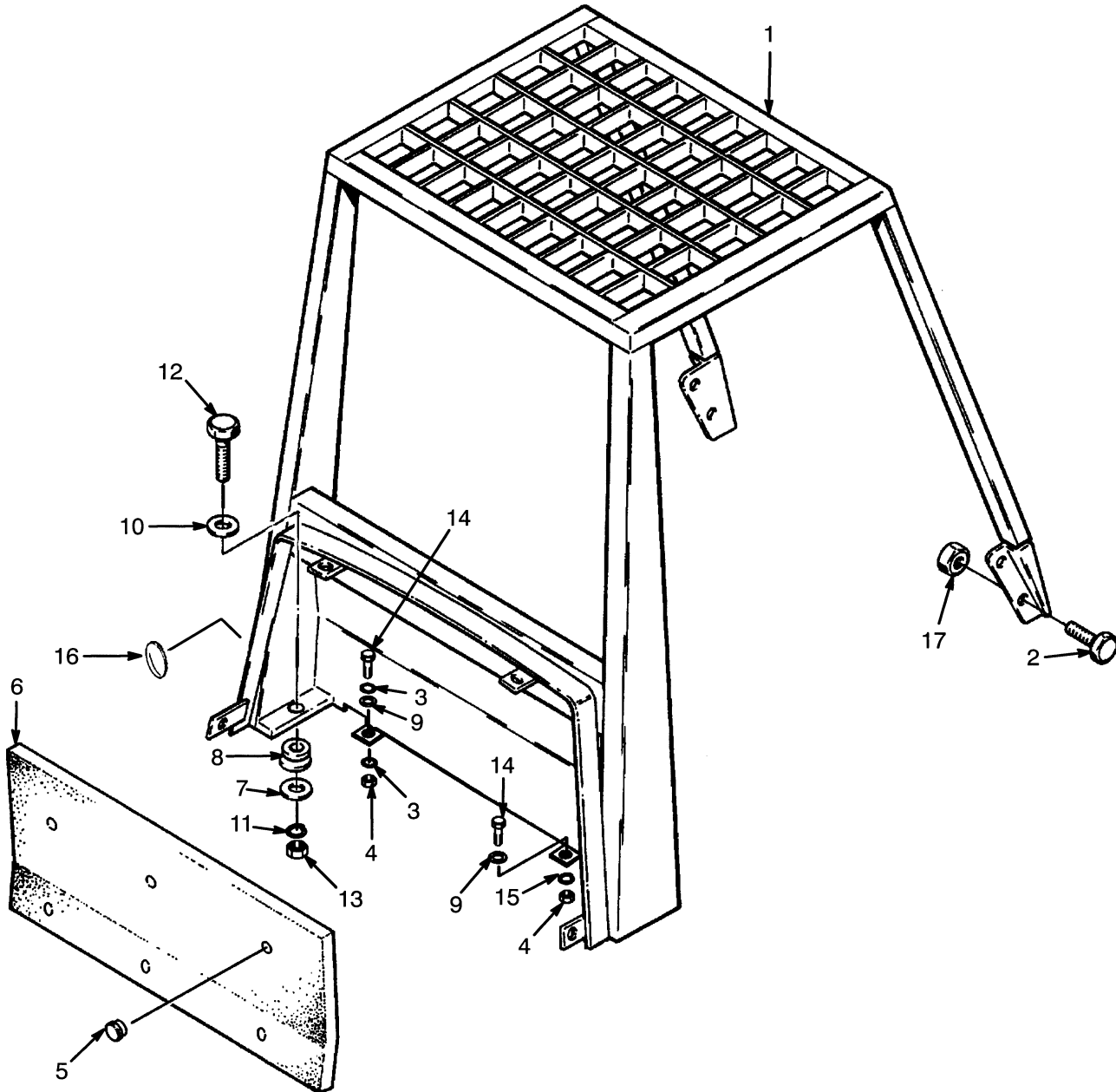
LABELS

ITEM	PART NO.	DESCRIPTION	QTY
1	1343276	Label (Mast Warning)	1
2	1373909	Label (Operator Warning)	1
3	a 1344132	Label (Hyster)	2
3	b 1344131	Label (Hyster)	2
4	1359588	Label (Operator Restraint)	2
5	1339830	Label (Mast Warning)	2
6	370258	Label (Auxiliary Function - Side-Shift)	1
7	369573	Label (Lift/Tilt).....	1
8	1316445	Label (Flammable LP Gas).....	1
9	329029	Label (LPG Tank).....	1
9	170658	Rivet (Not Illustrated)	2
10	1339828	Label (No Riders)	2
11	380335	Label (Model 6.00).....	2
11	380336	Label (Model 7.00).....	2
12	1385116	Label (Door Release)	1
13	316448	Label (Lifting Eye).....	4
14	1345926	Label (Fan Warning)	1
15	1300094	Label (Fan Warning)	1
16	1354165	Label (Anti-freeze)	1
17	1328205	Label (Operator Manual).....	1
18	2080140	Label Operator Presence System.....	1
19	1357001	Label (Park Brake Warning).....	1
20	1503886	Label (Noise Level)	1
21	2059838	Label (Impact Resistant Window) (With Cab).....	1
	1385099	Label (Hydraulic Oil Fill) (Not Illustrated)	1
	2034460	Label (Ether Warning) (Not Illustrated)	1

FOOTNOTES:

- a** Masts (4540-5540 mm Lift) Without Lights
- b** Three Stage Full Free-Lift with Lights (4540-5540 mm Lift)

OVERHEAD GUARD (Figure 1-10)



HP120477

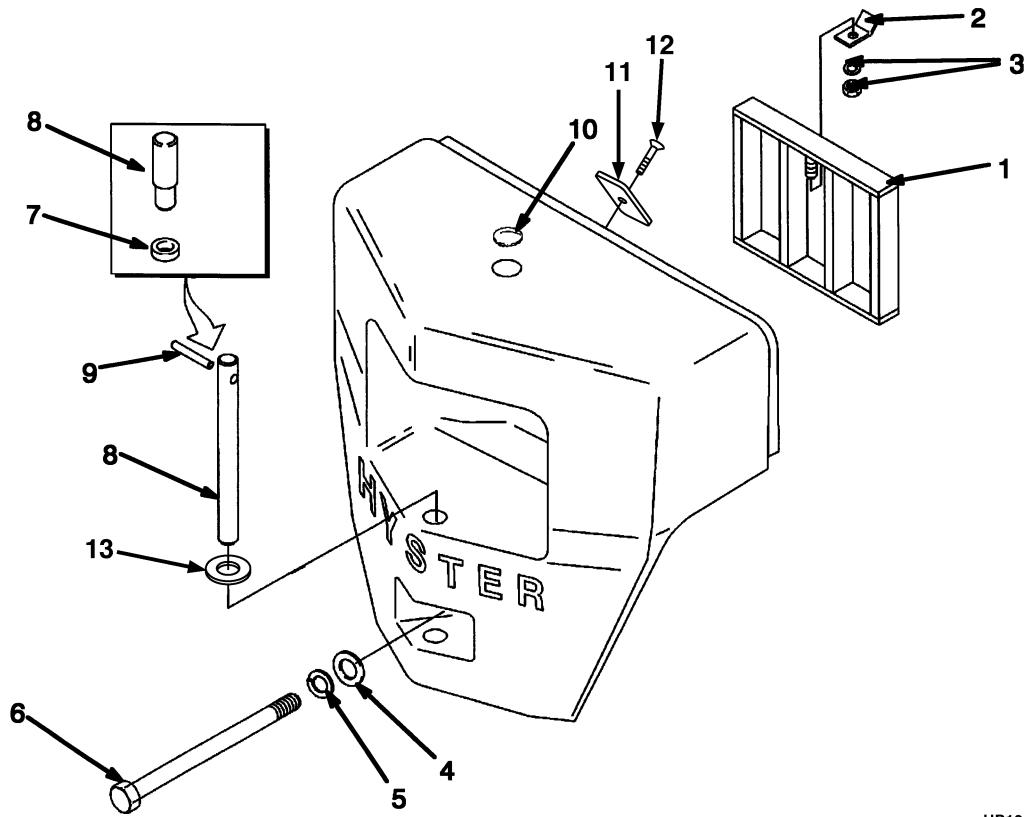
OVERHEAD GUARD

ITEM	PART NO.	DESCRIPTION	QTY
1	a 1552384	Overhead Guard	1
1	b 1607255	Overhead Guard	1
2	221652	Capscrew	4
3	292682	Lockwasher	2
4	136692	Nut	2
5	228376	Button	6
6	1552599	Liner	1
7	164281	Washer	2
8	129962	Mount	2
9	320159	Washer	2
10	379402	Washer	4
11	292685	Lockwasher	2
12	292570	Capscrew	2
13	292600	Nut	2
14	136985	Capscrew	2
15	292682	Lockwasher	1
16	1315411	Plug	1
17	248320	Nut	4

FOOTNOTES:

- a** ⇒ PENDING PER ECN 74953
- b** PENDING PER ECN 74953 ⇒

COUNTERWEIGHT (Figure 1-11)



HP120073

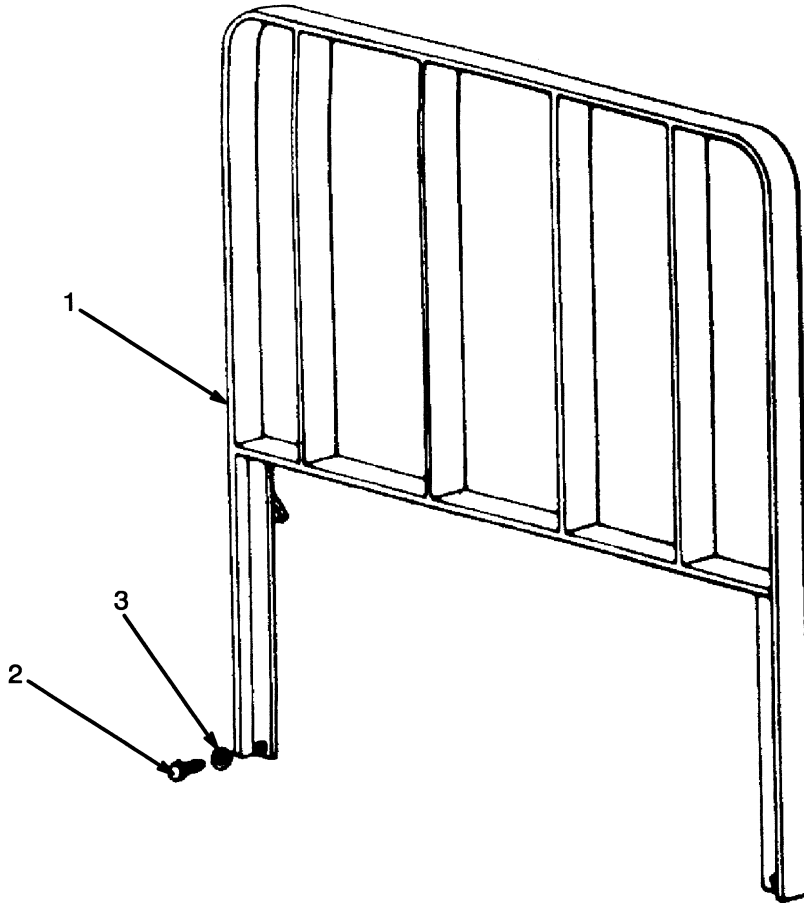
COUNTERWEIGHT**KEY:****A: H6.00XL****B: H7.00XL**

ITEM	PART NO.	DESCRIPTION	QTY	
			A	B
	ab 1334360	Counterweight	1	..
	ab 1334362	Counterweight	1
	abd 1334361	Counterweight	1	..
	abd 1334363	Counterweight	1
	c 1357461	Counterweight	1	..
	cd 1357462	Counterweight	1	..
	c 1357463	Counterweight	1
	cd 1357464	Counterweight	1
1	1320109	Grill	1	1
2	270405	Bracket.....	1	1
3	15057	Nut	1	1
3	15157	Lockwasher.....	1	1
4	150181	Washer	1	1
5	15166	Lockwasher.....	1	1
6	240243	Bolt	1
6	270074	Bolt	1	..
7	e 87759	Ring	1	1
8	f 1334359	Tow Pin.....	1	1
9	f 1527470	Spring Pin.....	1	1
10	1337734	Plug	1	..
11	1553784	Shim	AR	AR
12	296215	Capscrew.....	2	2
13	15186	Washer	1	1

FOOTNOTES:

- a** Carriage Width 1524 mm and Fork Pin Diameter 57,15 mm
- b** Carriage Width 1981 mm and Fork Pin Diameter 57,15 mm
- c** Carriage Width 1981 mm and Fork Pin Diameter 63,50 mm
- d** Optional
- e** ⇒ S/N F006A-5324
- f** S/N F006A-5325 ⇒

LOAD BACKREST EXTENSION (Figure 1-12)



HP120074

ITEM	PART NO.	DESCRIPTION	QTY
1	115112W	Load Backrest (1981 mm)	1
2	226458	Capscrew.....	6
3	292685	Lockwasher.....	6

BUY NOW

**Then Instant Download
the Complete Manual
Thank you very much!**