

PARTS MANUAL

CHALLENGER

**H3.50-5.50XM H4.00XM-5, -6
H4.00XMS-6
(K005)**

CUSTOMER EDITION

HYSTER

SECTIONS

1	FRAME
2	ENGINES
3	FUEL SYSTEM
4	ELECTRICAL SYSTEM
5	TRANSMISSION
6	STEERING SYSTEM
7	BRAKE SYSTEM
8	HYDRAULIC SYSTEM
9	MAST-TWO STAGE LIMITED FREE-LIFT
10	MAST-TWO STAGE FULL FREE-LIFT
11	MAST-THREE STAGE FULL FREE-LIFT
12	OPTIONS
13	NUMERICAL INDEX

This Parts Manual is divided into 13 major sections which are listed above. Quick reference to these sections can be made by placing the right thumb on the tab of the desired section, bending the book back and thumbing the pages to the corresponding tab.

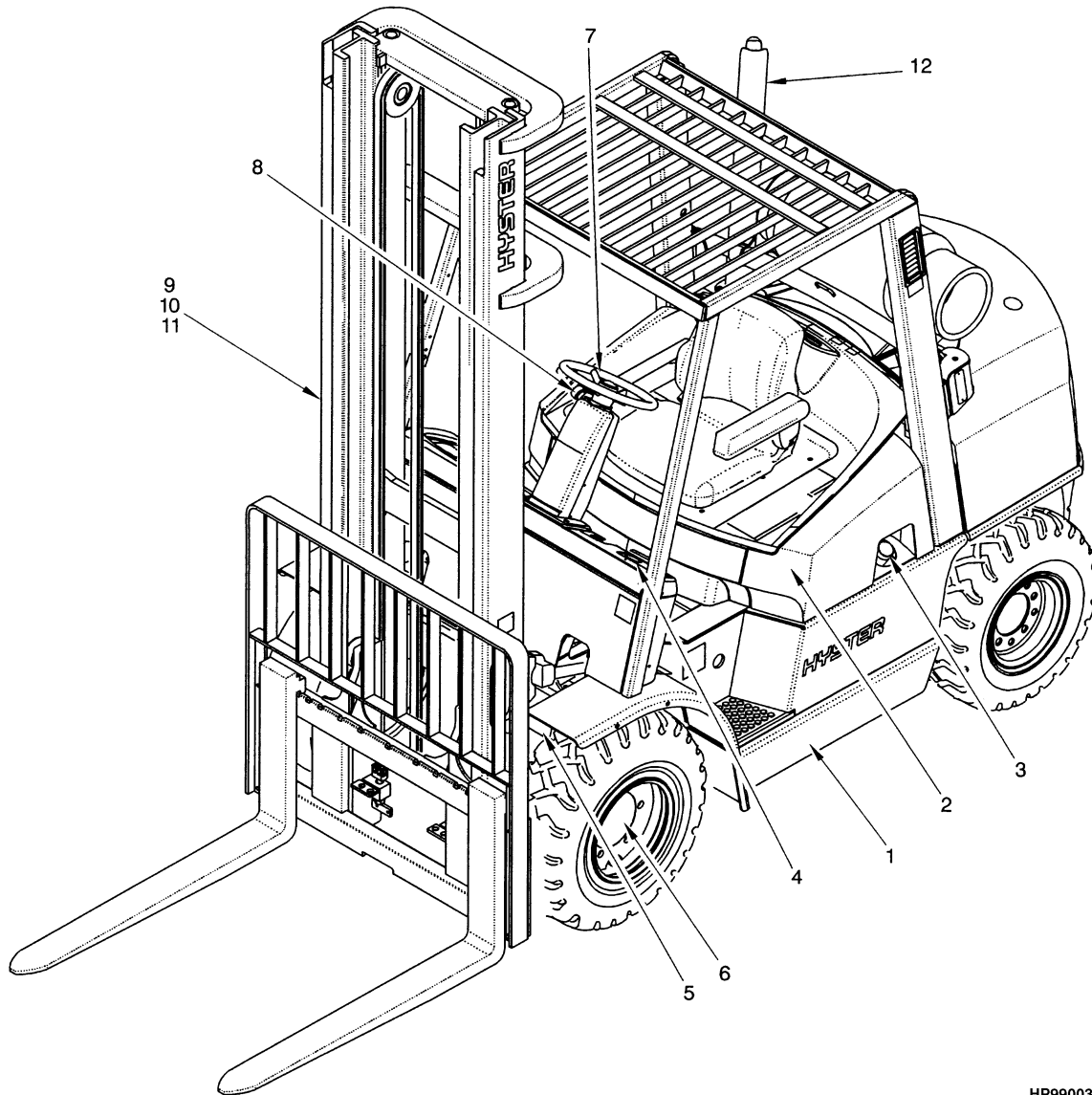
1

FRAME

SECTION 1
FRAME

DESCRIPTION	PAGE
COUNTERWEIGHT	1-22
FLOOR PLATES AND COVERS	1-16
FULL SUSPENSION SEAT	
SHEET 1 OF 2	1-6
SHEET 2 OF 2	1-8
GENERAL TRUCK	1-2
HOOD AND COVERS	1-10
LABELS	1-29
NON-SUSPENSION SEAT	1-4
OPERATOR COMPARTMENT	1-12
OVERHEAD GUARD	1-14
SCREEN	
REAR	
⇒S/N K005A-02078	1-24
S/N K005A-02079⇒	1-26
SOUND REDUCTION	1-18
UNDERCARRIAGE PAN	1-20

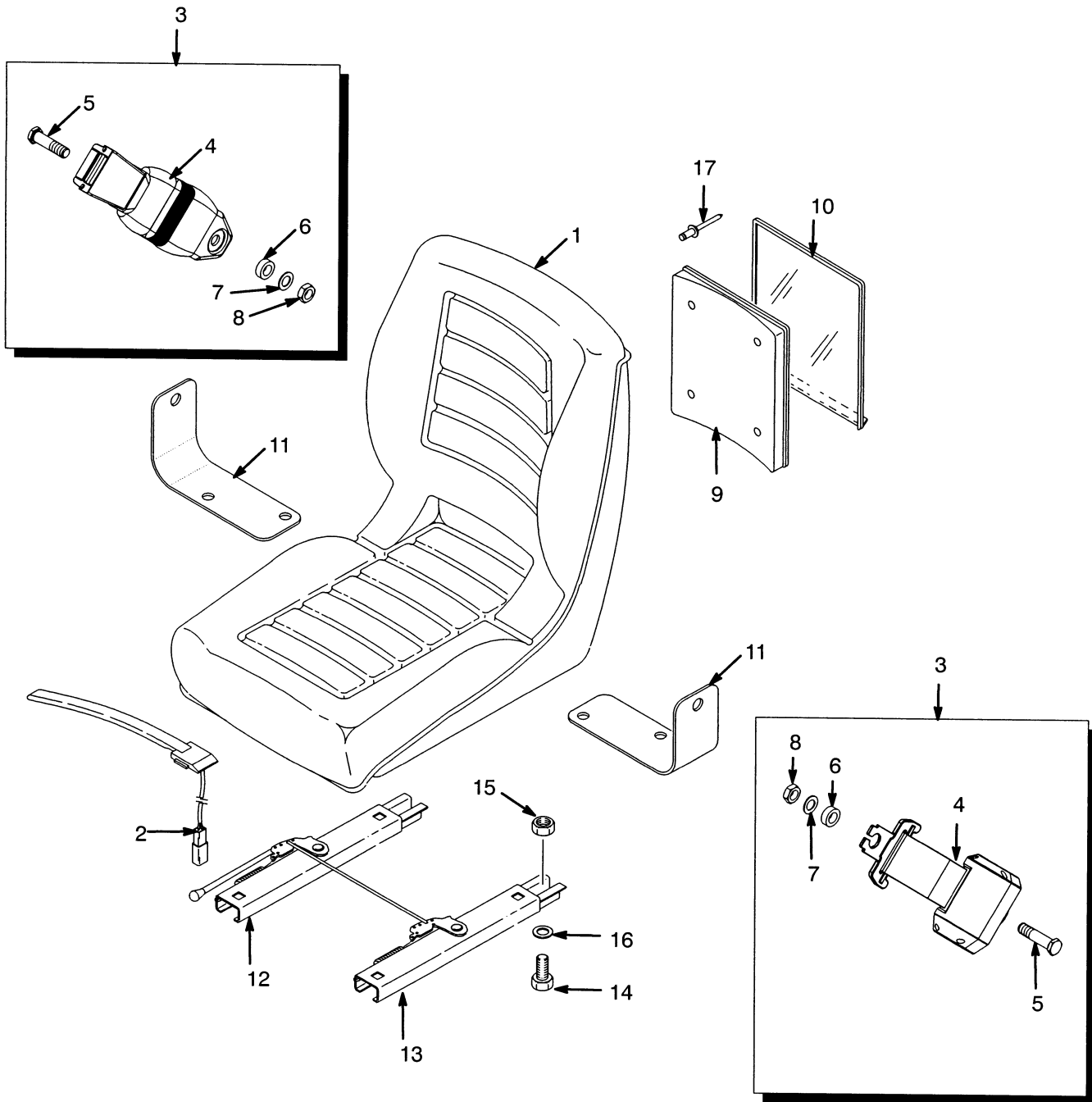
GENERAL TRUCK (Figure 1-1)



HP990030

ITEM	PART NO.	DESCRIPTION	QTY
1	Frame (☞ Figure 1-8)	1
2	Engine (☞ Figure 2-21)	1
3	Fuel System (☞ Figure 3-5)	1
4	Electrical System (☞ Figure 4-1)	1
5	Transmission (☞ Figure 5-1)	1
6	Brake System (☞ Figure 7-4)	1
7	Steering System (☞ Figure 6-1)	1
8	Hydraulic System (☞ Figure 8-1)	1
9	Mast-Two Stage Limited Free-Lift (☞ Figure 9-1)	1
10	Mast-Three Stage Full Free-Lift (☞ Figure 11-1)	1
11	Mast-Two Stage Full Free-Lift (☞ Figure 10-1)	1
12	Options (☞ Figure 12-28)	1

NON-SUSPENSION SEAT (Figure 1-2)

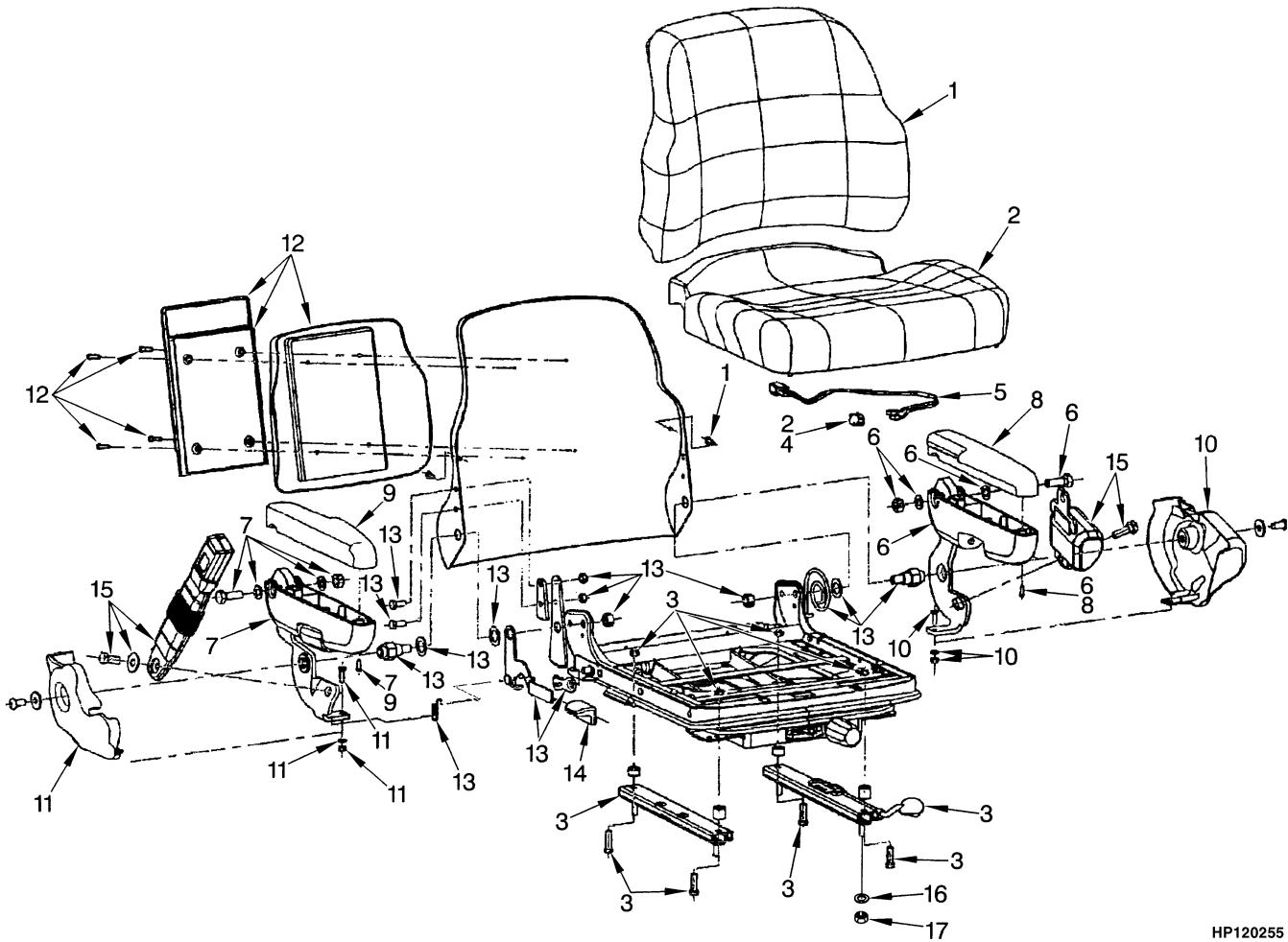


HP120254

NON-SUSPENSION SEAT

ITEM	PART NO.	DESCRIPTION	QTY
	1460231	Non-Suspension Seat.....	1
1	364911	Seat.....	1
2	2037311	Switch Assembly	1
3	1461081	Seat Belt Kit.....	1
4	Seat Belt	1
5	Screw	2
6	Washer.....	2
7	Washer.....	2
8	Nut	2
9	335988	Base (Information Case)	1
10	335991	Cover (Information Case).....	1
11	1470175	Bracket	1
12	1470176	Seat Rail.....	1
13	1470177	Seat Rail.....	1
14	18498	Capscrew.....	4
15	145639	Nut	4
16	15175	Washer	4
17	Rivet.....	4

FULL SUSPENSION SEAT (Figure 1-3) SHEET 1 OF 2

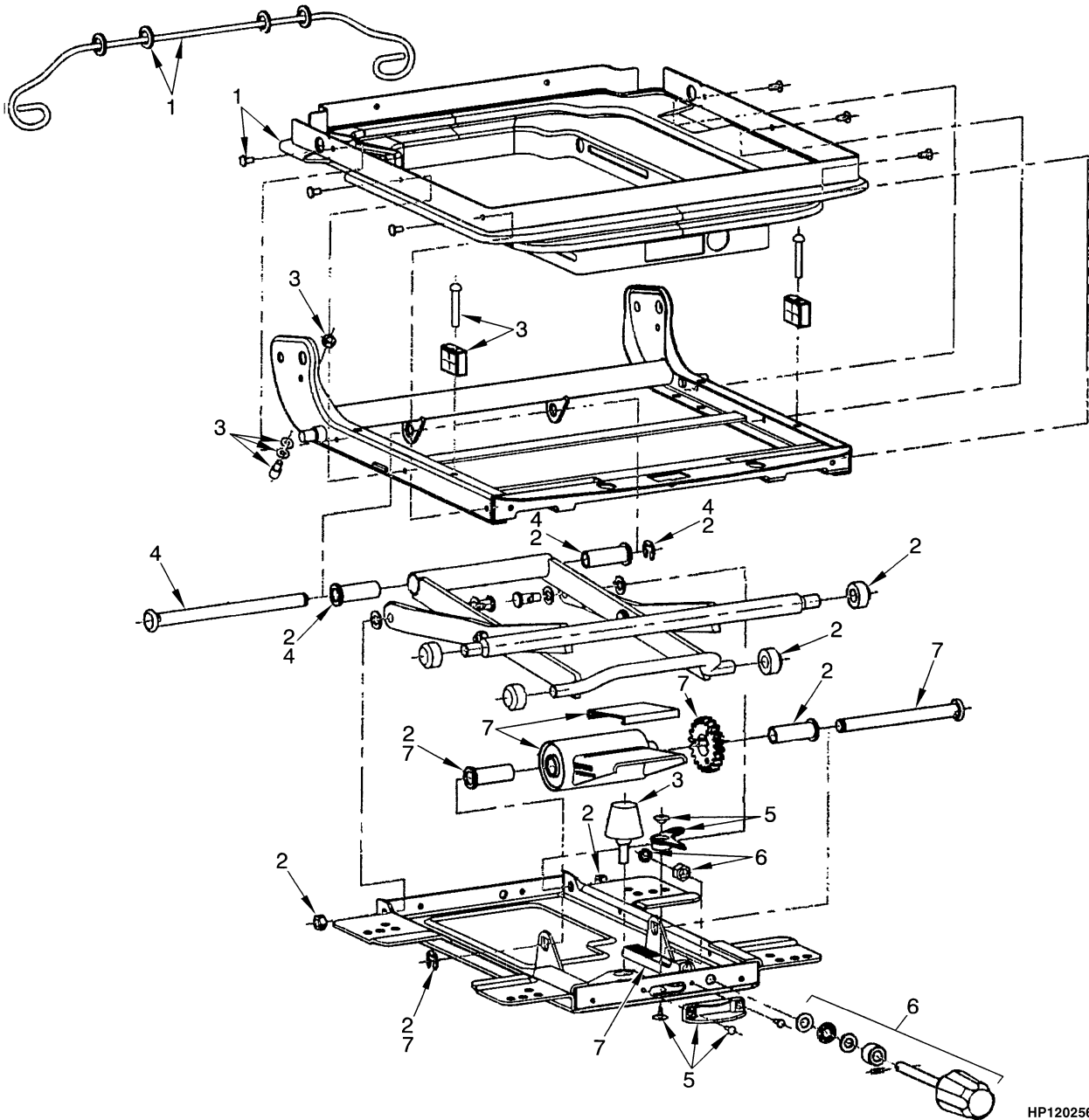


HP120255

**FULL SUSPENSION SEAT
SHEET 1 OF 2**

ITEM	PART NO.	DESCRIPTION	QTY
	1466006	Full Suspension Seat (Vinyl Cover)	1
	1466007	Full Suspension Seat (Fabric Cover)	1
1	1467533	Back Cushion (Vinyl)	1
1	1467535	Back Cushion (Fabric)	1
2	1494076	Seat Cushion (Vinyl).....	1
2	1467536	Seat Cushion (Fabric)	1
3	1467513	Slider Kit	1
4	1467514	Switch.....	1
5	1467515	Wire Harness	1
6	1467516	Armrest (LH) (LH).....	1
7	1467517	Armrest (RH) (RH)	1
8	1467518	Cap (LH).....	1
9	1467519	Cap (RH)	1
10	1467520	Cover (LH)	1
11	1467521	Cover (RH)	1
12	1467522	Holder Kit.....	1
13	1467530	Recliner Kit.....	1
14	1467531	Recliner Knob.....	1
15	1467532	Seat Belt Kit.....	1
16	15175	Washer	4
17	145639	Nut	4

FULL SUSPENSION SEAT (Figure 1-4) SHEET 2 OF 2

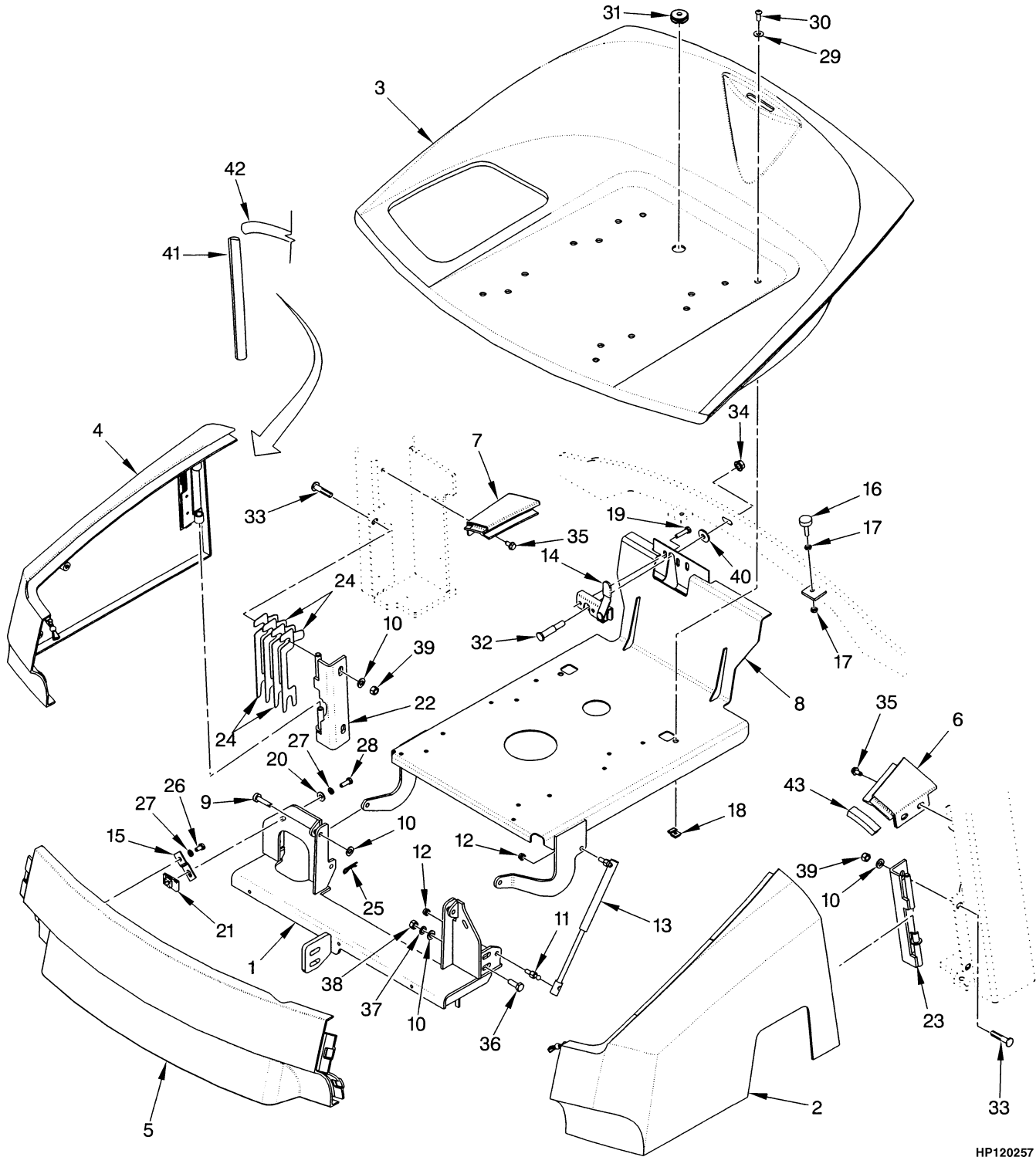


HP120256

**FULL SUSPENSION SEAT
SHEET 2 OF 2**

ITEM	PART NO.	DESCRIPTION	QTY
	1466006	Full Suspension Seat (Vinyl Cover)	1
	1466007	Full Suspension Seat (Fabric Cover)	1
1	1467523	Boot Kit.....	1
2	1467524	Roller and Bearing Kit	1
3	1467525	Bumper and Stop Kit	1
4	1467526	Bearing Shaft Kit	1
5	1467527	Weight Adjuster Indicator Kit	1
6	1467528	Knob Kit.....	1
7	1467529	Suspension Spring Kit.....	1

HOOD AND COVERS (Figure 1-5)

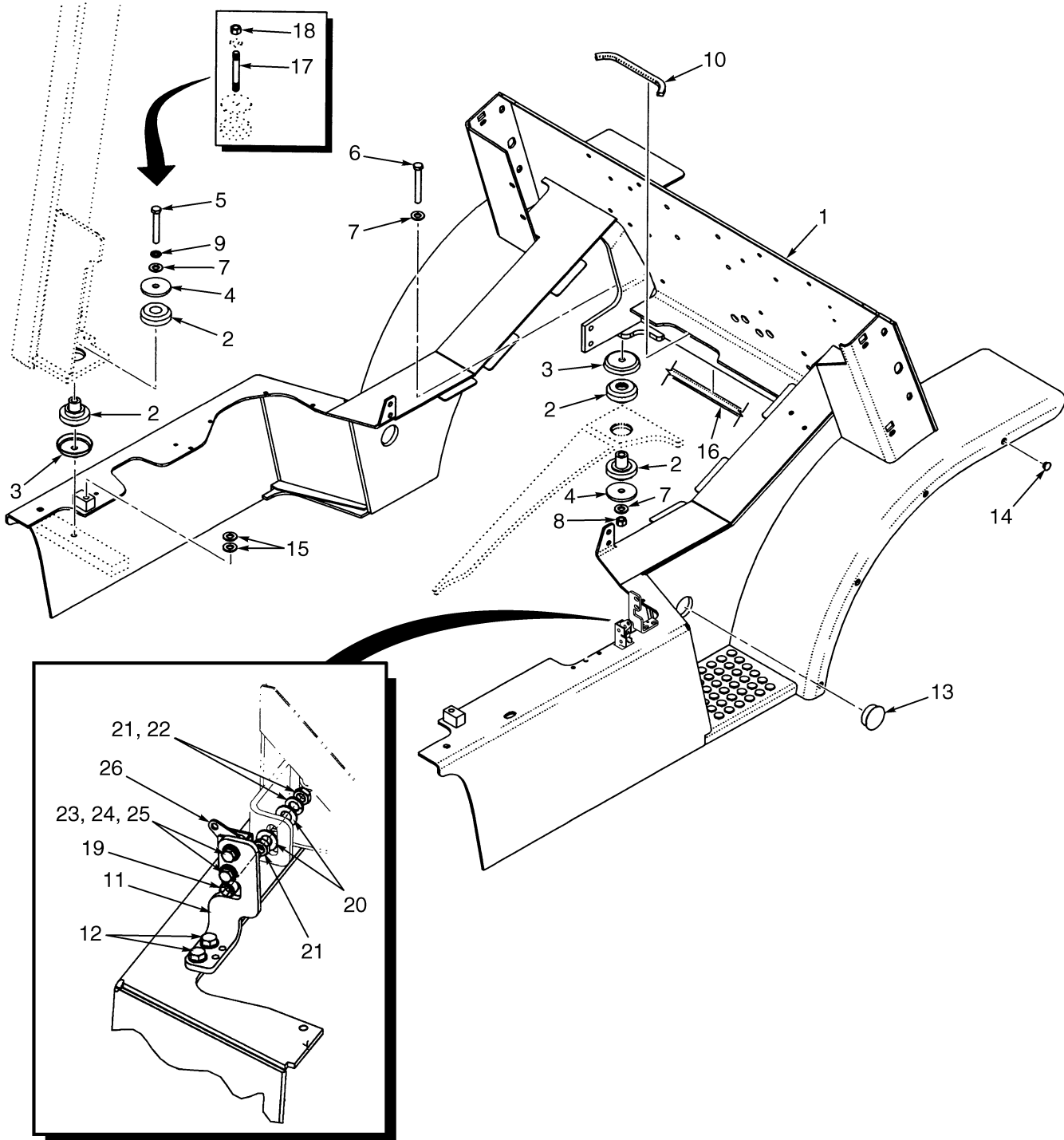


HP120257

HOOD AND COVERS

ITEM	PART NO.	DESCRIPTION	QTY
1	1491109	Crossmember	1
2	1397957	Panel (LH) (LPG)	1
2	1397958	Panel (LH) (Diesel)	1
3	1397960	Hood (Vented).....	1
4	1396626	Panel (RH)	1
5	1396625	Cover (Front).....	1
5	1392718	Latch (Over Center).....	2
6	1397964	Corner (LH) (Without Cab)	1
6	1485280	Corner (LH) (With Cab)	1
7	1397963	Corner (RH) (Without Cab).....	1
7	1485281	Corner (RH) (With Cab).....	1
8	1488684	Seat Pan	1
9	2021207	Pin	2
10	320159	Washer	10
11	1350285	Stud (Ball).....	1
12	316835	Nut	4
13	1518858	Gas Spring Assembly	2
13	1518888	Gas Spring	1
13	1513907	Ball Stud	2
14	2036143	Latch	1
15	2036866	Bracket.....	2
16	1347088	Stop Screw	2
17	15001	Nut	4
18	1385535	Nut	2
19	1529238	Capscrew.....	2
20	320158	Washer	4
21	1364259	Clip	2
22	1567198	Hinge (RH).....	1
23	1470009	Hinge (LH)	1
24	2036142	Shim (1,194 mm)	4
25	1362714	Cotter Pin.....	2
26	287851	Capscrew.....	2
27	292681	Lockwasher.....	6
28	136749	Capscrew.....	2
29	375629	Washer	2
30	370599	Capscrew.....	2
31	1359587	Grommet.....	1
32	1471866	Striker	1
33	220023	Bolt	4
34	264144	Nut	1
35	316678	Screw.....	4
36	136985	Capscrew.....	8
37	320157	Washer	2
38	316826	Nut	2
39	156133	Nut	8
40	2036863	Washer	1
41	1464909	Trim Seal.....	2
42	1396658	Seal	2
43	1466416	Seal	2

OPERATOR COMPARTMENT (Figure 1-6)

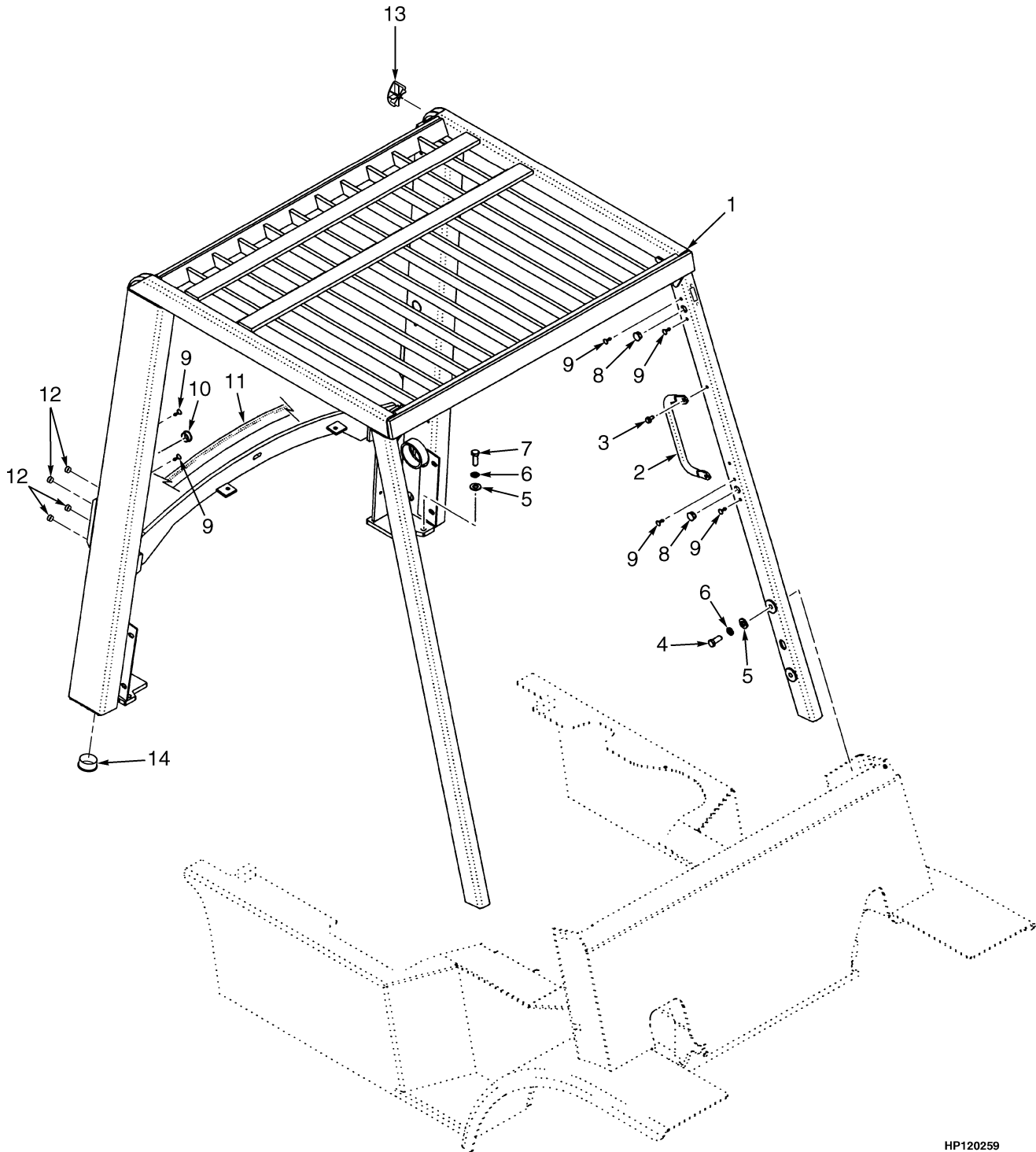


HP120258

OPERATOR COMPARTMENT**KEY:****A: H3.50XM, H4.00XM-5, H4.00XMS-6****B: H4.00XM-6, H4.50-5.50XM**

ITEM	PART NO.	DESCRIPTION	QTY	
			A	B
1	1493147	Operator Module (1830 mm Short Wheel Base)	1	..
1	1493148	Operator Module (2100 mm Long Wheel Base)	1
2	1378168	Mount.....	4	4
3	1378197	Cup	4	4
4	300939	Washer	4	4
5	293655	Capscrew.....	2	2
6	293657	Capscrew.....	2	2
7	296423	Washer	6	6
8	302402	Nut	2	2
9	292683	Lockwasher.....	2	2
10	1396024	Trim.....	1	1
11	1476761	Bracket.....	1	1
12	316678	Screw.....	2	2
13	1398009	Plug	2	2
14	1399760	Plug	8	8
15	296422	Washer	4	4
16	1396657	Seal	AR	AR
17	2037998	Stud (Optional)	2	2
17	264134	Sealant	AR	AR
18	300937	Locknut (Optional)	2	2
19	18762	Capscrew.....	1	1
20	15134	Washer	2	2
21	15086	Nut	2	2
22	15156	Lockwasher.....	1	1
23	18462	Capscrew.....	2	2
24	15154	Lockwasher.....	2	2
25	15127	Washer	2	2
26	1476422	Latch (Rotary).....	1	1

OVERHEAD GUARD (Figure 1-7)



HP120259

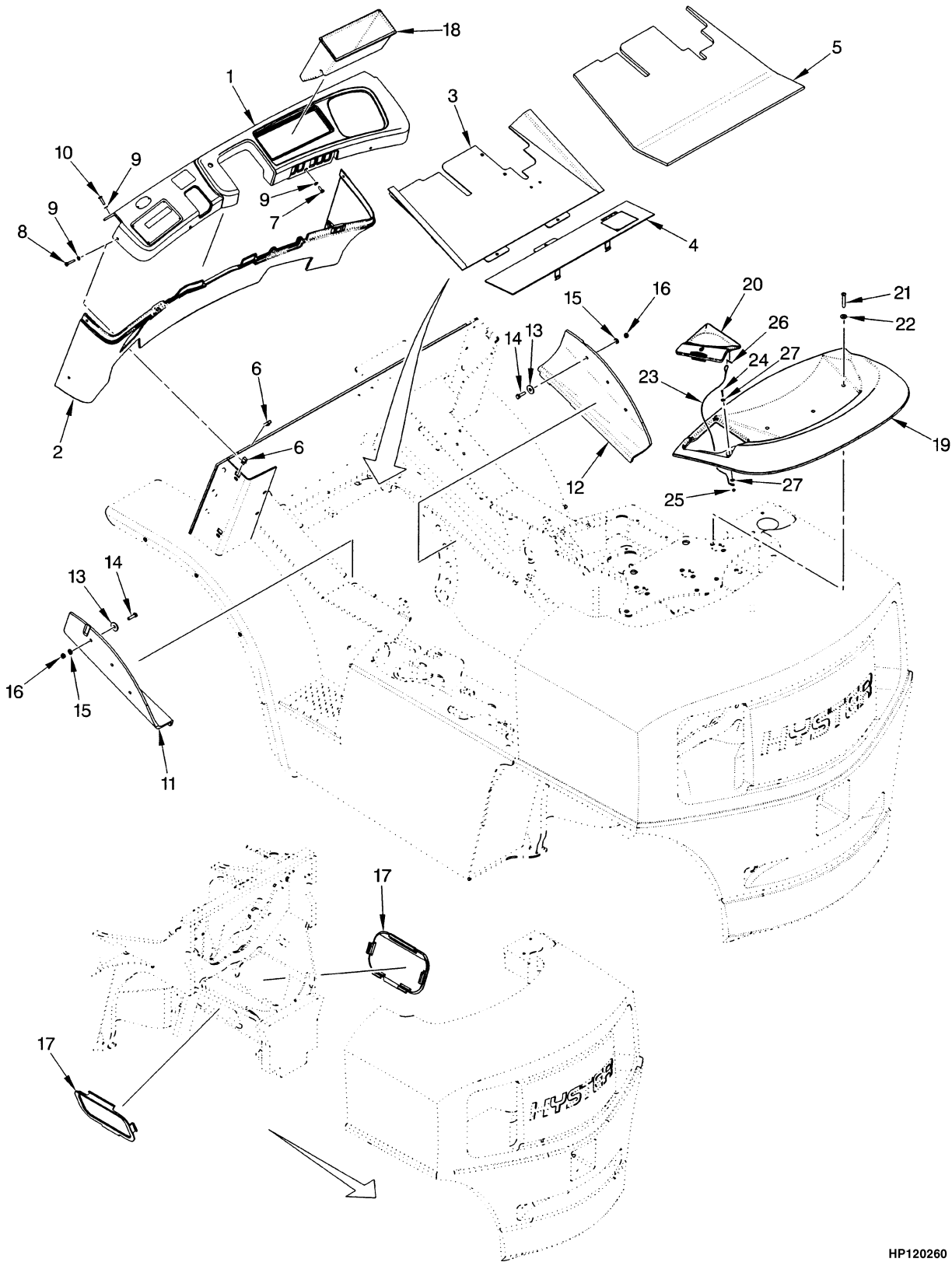
OVERHEAD GUARD

ITEM	PART NO.	DESCRIPTION	QTY
1	a 1397720	Overhead Guard (Standard Height).....	1
1	b 1483504	Overhead Guard (Standard Height).....	1
1	a 1396669	Overhead Guard (Raised Height).....	1
1	b 1479585	Overhead Guard (Raised Height).....	1
2	2035800	Handle	1
3	316678	Screw.....	2
4	293644	Capscrew.....	4
5	296423	Washer	6
6	292683	Lockwasher.....	6
7	293646	Capscrew.....	2
8	1363917	Plug	6
9	d 1363916	Plug	16
9	e 1363916	Plug	14
10	d 1363918	Plug	2
10	e 1363918	Plug	4
11	1465740	Seal	1
12	d 1509037	Plug	2
12	e 1494888	Plug	2
13	c 1479633	Plug (Top Rail End Cap)	2
13	e 1479633	Plug (Top Rail End Cap)	4
14	e 1356377	Plug	2

FOOTNOTES:

- a** ⇒ S/N K005A-03237
b S/N K005A-03238 ⇒
c S/N K005A-03238⇒S/N PENDING PER ECN 92500
d ⇒ D/B 08/2002
e D/B 08/2002 ⇒

FLOOR PLATES AND COVERS (Figure 1-8)

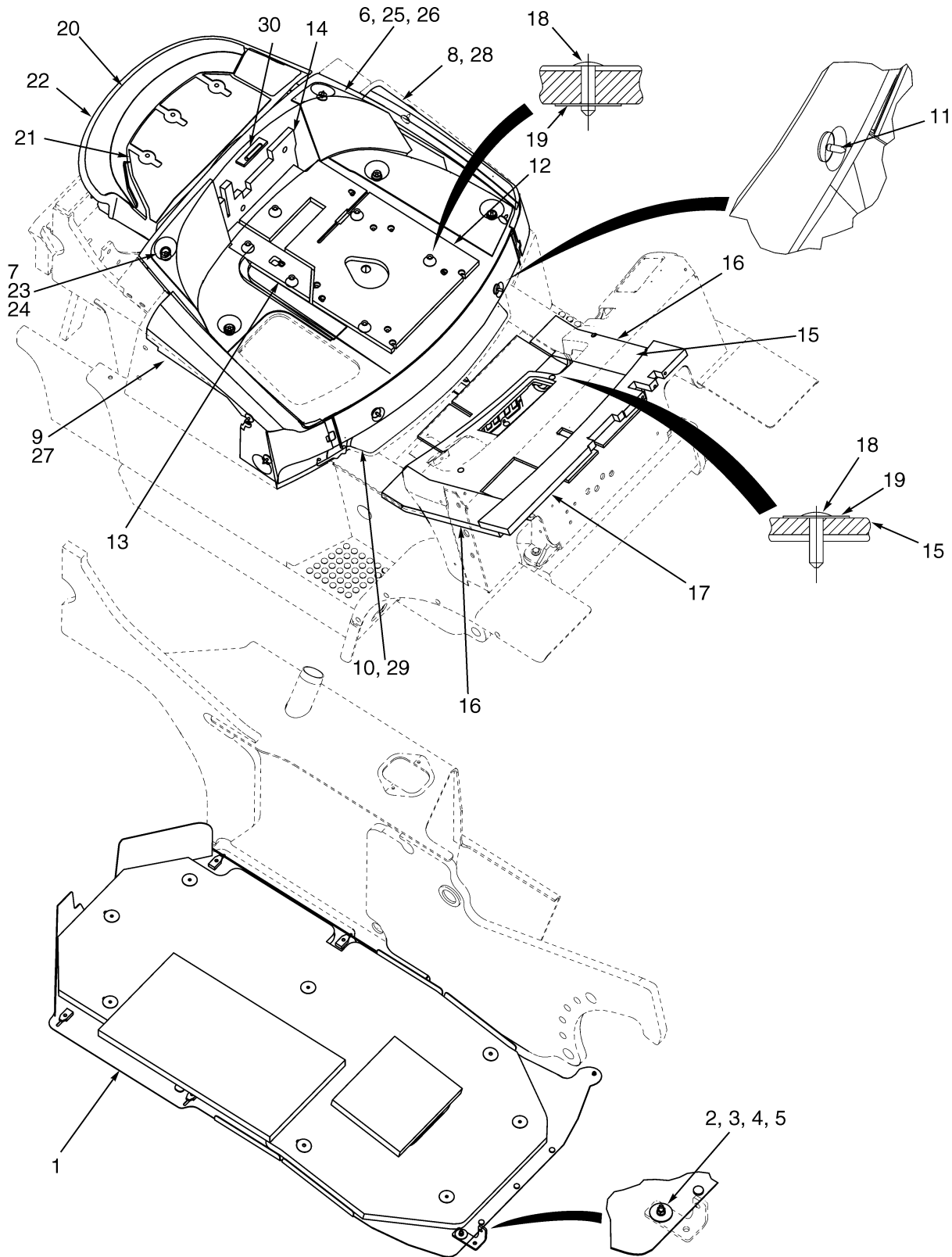


HP120260

FLOOR PLATES AND COVERS

ITEM	PART NO.	DESCRIPTION	QTY
1	1396147	Dash	1
2	1396148	Cowl Panel.....	1
3	2035798	Floorplate (Front).....	1
4	2035980	Floorplate.....	1
5	1396641	Floormat	1
6	1350215	Nut (Foldover).....	6
7	1525246	Screw.....	3
8	1525248	Screw.....	4
9	1399399	Washer	9
10	1525247	Screw.....	2
11	1399337	Flap (RH Cylinder).....	1
12	1399338	Flap (LH Cylinder)	1
13	1334790	Washer	6
14	176640	Capscrew.....	6
15	320157	Washer	6
16	302400	Locknut	6
17	2036875	Cover	2
18	1338286	Storage Compartment (For OHG Only).....	1
18	1400207	Cover (For Cabs Only).....	1
19	1385498	Cover (Radiator)	1
20	1396009	Radiator Cap Door (LPG)	1
20	1396012	Radiator Cap Door (Diesel)	1
21	1464899	Capscrew.....	3
22	375629	Washer	3
23	1400180	Lanyard.....	1
24	296510	Screw.....	1
25	302398	Nut	1
26	15212	Cotter Pin.....	1
27	320156	Washer	2

SOUND REDUCTION (Figure 1-9)

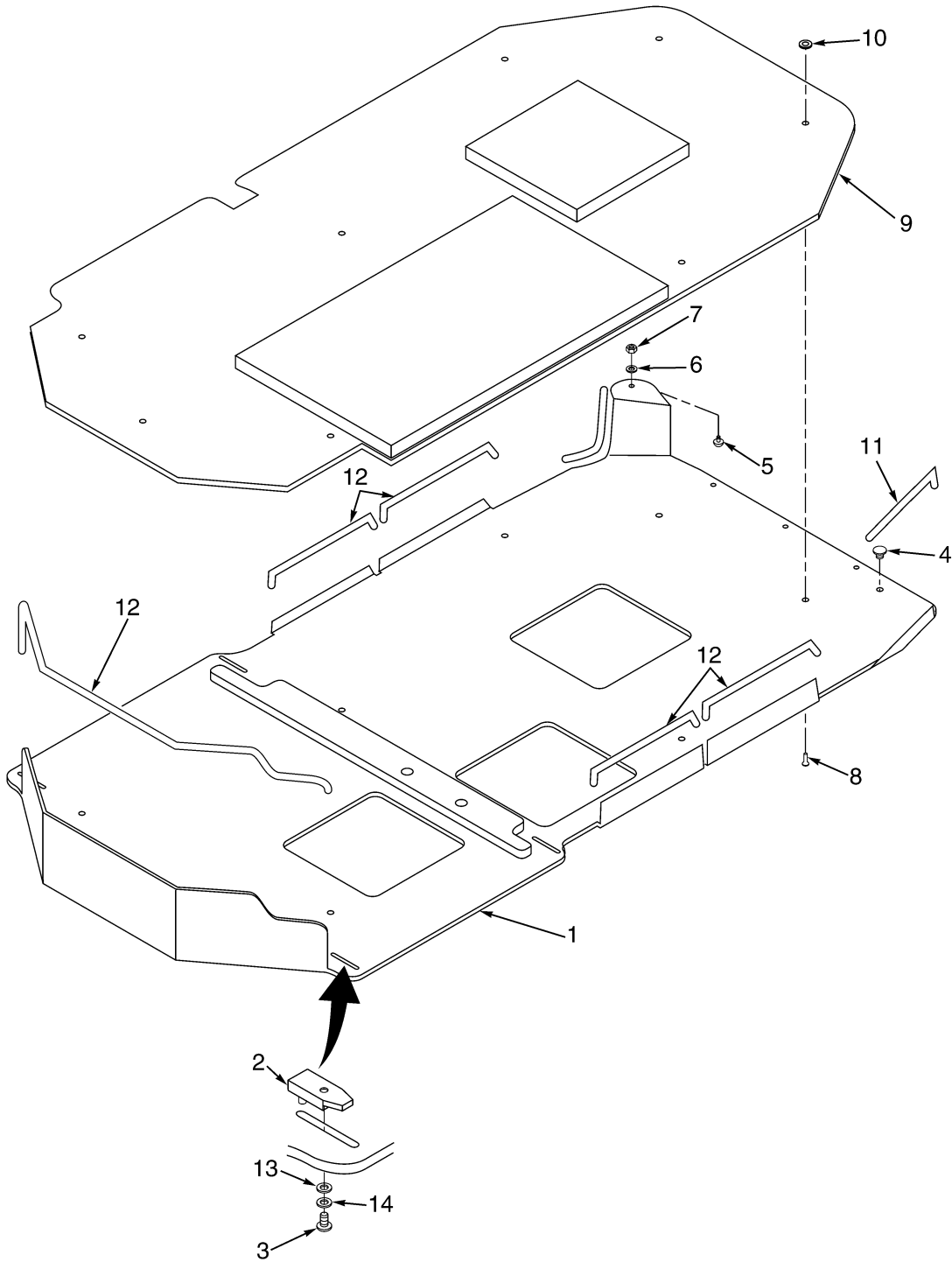


HP120637

SOUND REDUCTION**KEY:****A: 1830 mm Short Wheel Base****B: 2100 mm Long Wheel Base**

ITEM	PART NO.	DESCRIPTION	QTY	
			A	B
1	1399809	Undercarriage Pan (☞ Figure 1-10)	1	..
1	1399810	Undercarriage Pan (☞ Figure 1-10)	1
2	293603	Capscrew	1	1
3	2034906	Washer	2	2
4	292680	Lockwasher	1	1
5	136687	Nut.....	1	1
6	1400151	Liner (LH Hood).....	1	1
7	1400152	Liner (RH Hood)	1	1
8	1400153	Liner (LH Door Panel)	1	1
9	1400154	Liner (RH Door Panel).....	1	1
10	1400155	Liner (Front Cover)	1	1
11	1304971	Fastener	11	11
12	1468020	Sound Liner (Seat)	1	1
13	1468021	Sound Liner (Seat)	1	1
14	1468022	Sound Liner (Seat)	1	1
15	1468023	Sound Liner (Floor Plate)	1	1
16	1468024	Sound Liner (Floor Plate)	2	2
17	1468025	Cowl Barrier.....	1	1
18	1399815	Rivet	15	15
19	1399784	Washer	15	15
20	1468032	Sound Liner (Radiator Cover)	1	1
21	1468033	Sound Liner (Radiator Barrier)	1	1
22	1382126	Seal	AR	AR
23	1467338	Barrier (RH Seat Panel)	1	1
24	1467340	Barrier (RH Seat Panel)	1	1
25	1467342	Barrier (LH Seat Panel)	1	1
26	1467343	Barrier (LH Seat Panel)	1	1
27	1467344	Barrier (RH Door Panel).....	1	1
28	1467345	Barrier (LH Door Panel).....	1	1
29	1467347	Barrier (Front Panel).....	1	1
30	1490766	Pad (Latch).....	1	1
	1468027	Barrier Kit (Includes Items 23-30).....	1	1

UNDERCARRIAGE PAN (Figure 1-10)



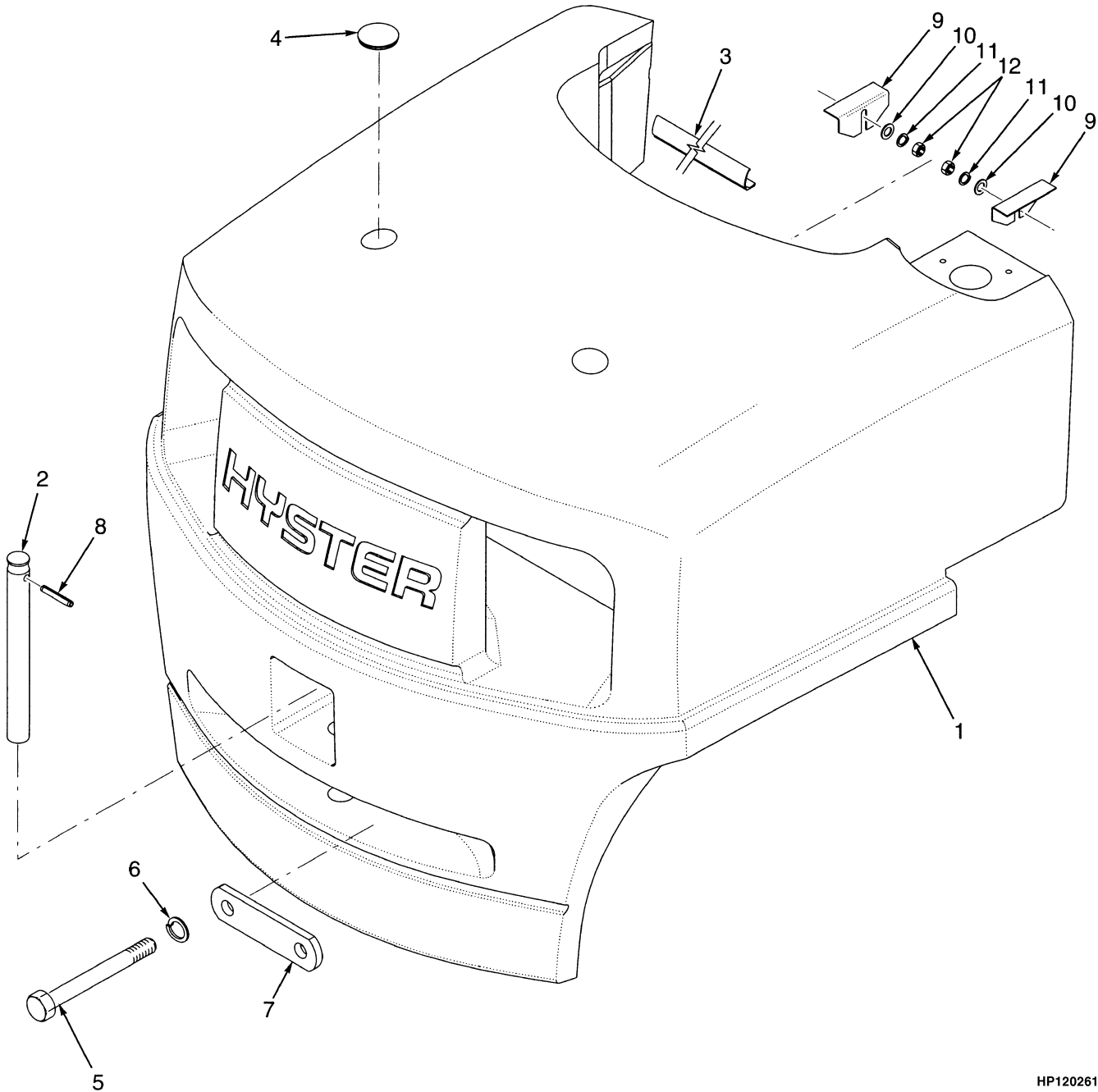
HP120636

UNDERCARRIAGE PAN**KEY:****A: 1830 mm Short Wheel Base****B: 2100 mm Long Wheel Base**

ITEM	PART NO.	DESCRIPTION	QTY	
			A	B
	a 1399809	Undercarriage Pan (Assembly).....	1	..
	b 1399810	Undercarriage Pan (Assembly).....	..	1
1	1397647	Pan	1	..
1	1397651	Pan	1
2	1399818	Nut.....	4	4
3	1399820	Capscrew	4	4
4	1399817	Bumper.....	3	3
5	1399816	Screw	1	1
6	320155	Washer	1	1
7	302398	Nut.....	1	1
8	1399815	Rivet	8	8
9	1399813	Liner	1	..
9	1399814	Liner	1
10	1399784	Washer	8	8
11	1399829	Edge Strip (250 mm)	2	2
12	1399830	Edge Strip (420 mm)	4	4
13	320156	Washer	4	6
14	292680	Lockwasher	4	6

FOOTNOTES:**a** H3.50XM-H4.00XMS-6**b** H4.00XMS-H5.50XM

COUNTERWEIGHT (Figure 1-11)

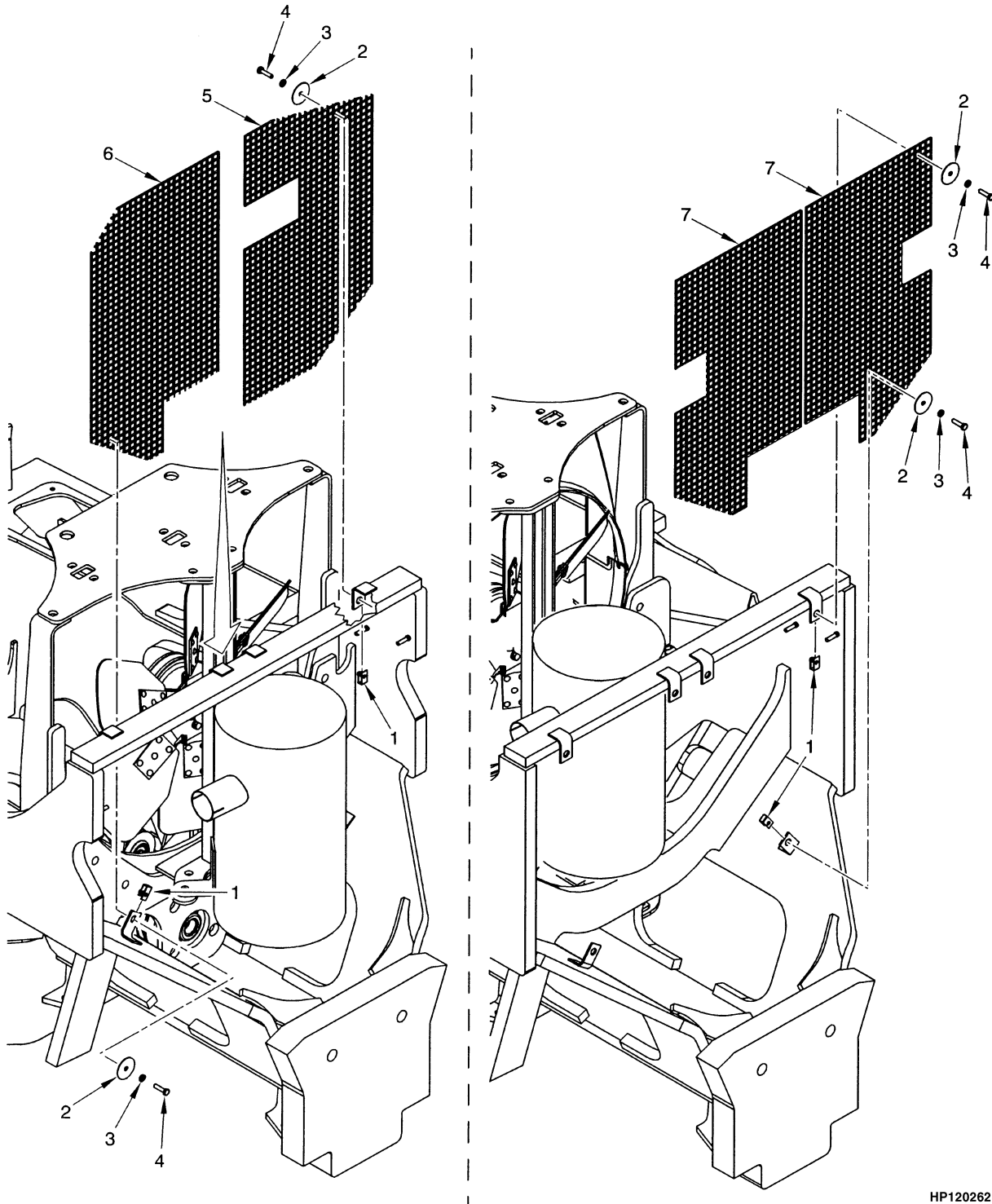


HP120261

COUNTERWEIGHT

ITEM	PART NO.	DESCRIPTION	QTY
1	1388875	Counterweight (H3.50XM)	1
1	1388876	Counterweight (H4.00XM-5)	1
1	1385449	Counterweight (H4.00XMS-6)	1
1	1388884	Counterweight (H4.00XM-6)	1
1	1388877	Counterweight (H4.50XM)	1
1	1388878	Counterweight (H5.00XM)	1
1	1385457	Counterweight (H5.50XM)	1
2	1388898	Tow Pin	1
3	1465534	Seal (H3.50XM - H4.00XMS-6)	2
3	1401584	Seal (H4.00XM-6 - H5.50XM)	2
4	2021395	Cap	2
5	292614	Capscrew	2
6	292689	Lockwasher	2
7	1480019	Washer	1
8	302472	Pin	1
9	1335763	Shim (2,769 mm)	4
10	320158	Washer	4
11	292681	Lockwasher	4
12	239503	Nut	4

SCREEN (Figure 1-12) REAR (⇒S/N K005A-02078)

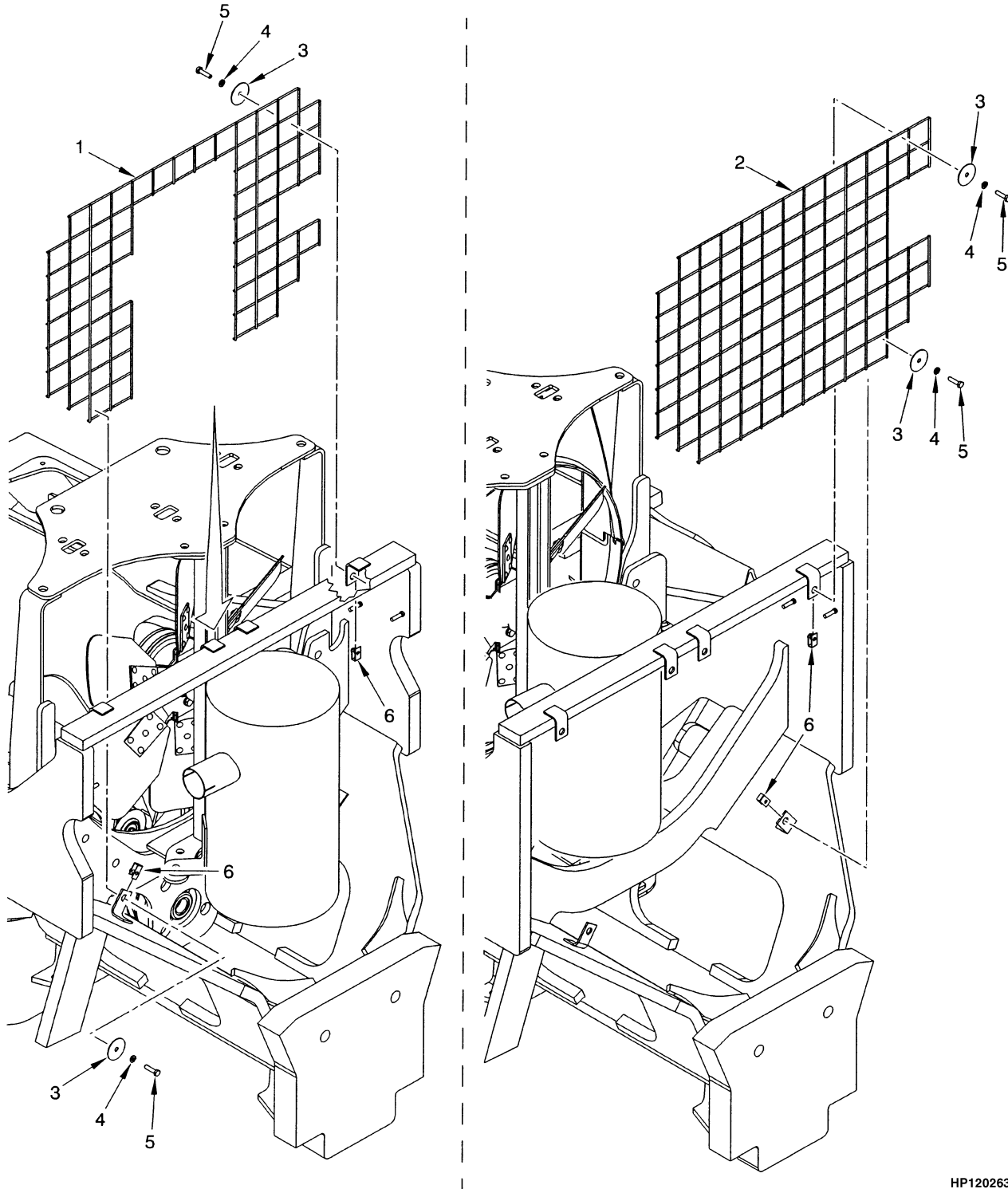


HP120262

SCREEN
REAR
(⇒S/N K005A-02078)

ITEM	PART NO.	DESCRIPTION	QTY
1	1350215	Nut (Foldover).....	6
2	1399784	Washer	6
3	292680	Lockwasher.....	6
4	287816	Capscrew.....	6
5	1399779	Screen (RH) (1830/1880 mm Short Wheel Base)	1
6	1465328	Screen (LH) (1830/1880 mm Short Wheel Base).....	1
7	1399778	Screen (2100 mm Long Wheel Base)	2

SCREEN (Figure 1-13) REAR (S/N K005A-02079⇒)



HP120263

**SCREEN
REAR
(S/N K005A-02079⇒)**

ITEM	PART NO.	DESCRIPTION	QTY
1	1470921	Screen (H3.50XM) (1830/1880 mm Short Wheel Base)	1
1	1470923	Screen (H4.00XM-5 - H4.00XMS-6) (1830/1880 mm Short Wheel Base)	1
2	1468699	Screen (H4.00XM - H5.50XM) (2100 mm Long Wheel Base)	1
3	1471535	Washer	4
4	292681	Lockwasher	4
5	136749	Capscrew	4
6	1398062	Nut	4

BUY NOW

**Then Instant Download
the Complete Manual
Thank you very much!**