

# **PARTS MANUAL**

---

**HYSTER**

**H3.50-5.50XM, H4.00XM-6,  
H4.00XMS-6  
(L005)**

CUSTOMER EDITION

---

***HYSTER***

**SECTIONS**

<b>1</b>	<b>FRAME</b>
<b>2</b>	<b>ENGINES</b>
<b>3</b>	<b>FUEL SYSTEM</b>
<b>4</b>	<b>ELECTRICAL SYSTEM</b>
<b>5</b>	<b>TRANSMISSION</b>
<b>6</b>	<b>STEERING SYSTEM</b>
<b>7</b>	<b>BRAKE SYSTEM</b>
<b>8</b>	<b>HYDRAULIC SYSTEM</b>
<b>9</b>	<b>MAST-TWO STAGE LIMITED FREE-LIFT</b>
<b>10</b>	<b>MAST-TWO STAGE FULL FREE-LIFT</b>
<b>11</b>	<b>MAST-THREE STAGE FULL FREE-LIFT</b>
<b>12</b>	<b>OPTIONS</b>
<b>13</b>	<b>NUMERICAL INDEX</b>

This Parts Manual is divided into 13 major sections which are listed above. Quick reference to these sections can be made by placing the right thumb on the tab of the desired section, bending the book back and thumbing the pages to the corresponding tab.

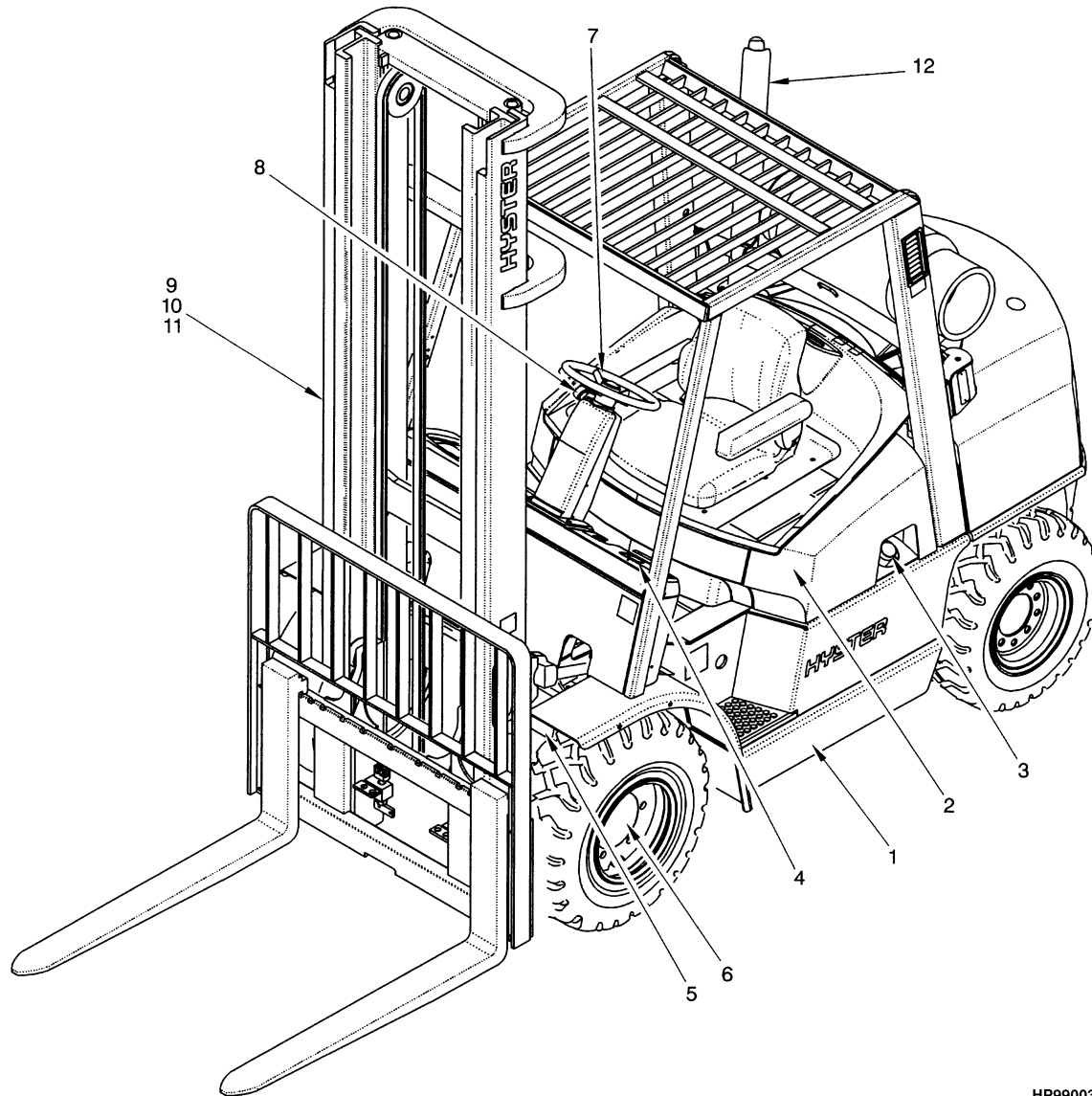
**1**

**FRAME**

**SECTION 1**  
**FRAME**

<b>DESCRIPTION</b>	<b>PAGE</b>
COUNTERWEIGHT .....	1-30
FLOOR PLATES AND COVERS .....	1-22
FORKS	
POLISHED WITH FULL BOTTOM TAPER HOOK TYPE .....	1-40
STANDARD TAPER HOOK TYPE	
H3.50-4.00XM .....	1-38
H4.50-5.50XM .....	1-39
FULL SUSPENSION SEAT	
PENDING PER ECN 74952⇒ .....	1-12
SHEET 1 OF 2	
⇒PENDING PER ECN 74952 .....	1-8
SHEET 2 OF 2	
⇒PENDING PER ECN 74952 .....	1-10
GENERAL TRUCK .....	1-2
HOOD AND COVERS .....	1-14
LABELS .....	1-34
LOAD BACKREST EXTENSIONS .....	1-36
NON-SUSPENSION SEAT	
PENDING PER ECN 74952⇒ .....	1-6
⇒PENDING PER ECN 74952 .....	1-4
OPERATOR COMPARTMENT .....	1-18
OVERHEAD GUARD.....	1-20
SCREEN	
REAR.....	1-32
SOUND REDUCTION .....	1-24
UNDERCARRIAGE PAN	
PENDING PER ECN 92950⇒ .....	1-28
⇒PENDING PER ECN 92950 .....	1-26

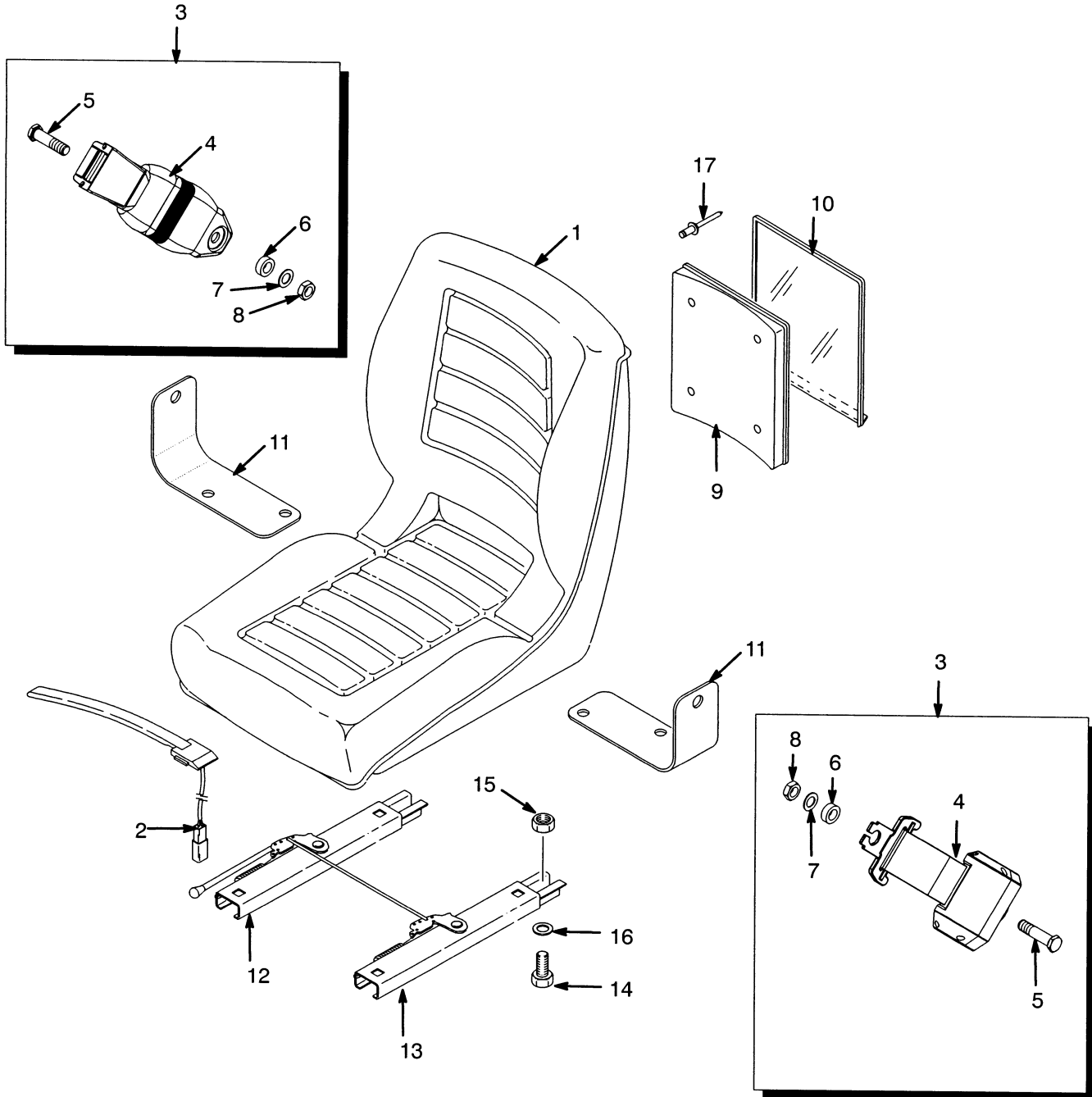
## GENERAL TRUCK (Figure 1-1)



HP990030

ITEM	PART NO.	DESCRIPTION	QTY
1	.....	Frame .....	1
2	.....	Engine .....	1
3	.....	Fuel System.....	1
4	.....	Electrical System.....	1
5	.....	Transmission.....	1
6	.....	Brake System .....	1
7	.....	Steering System .....	1
8	.....	Hydraulic System.....	1
9	.....	Mast-Two Stage Limited Free-Lift .....	1
10	.....	Mast-Three Stage Full Free-Lift.....	1
11	.....	Mast-Two Stage Full Free-Lift.....	1
12	.....	Options .....	1

## NON-SUSPENSION SEAT (Figure 1-2) (⇒PENDING PER ECN 74952)

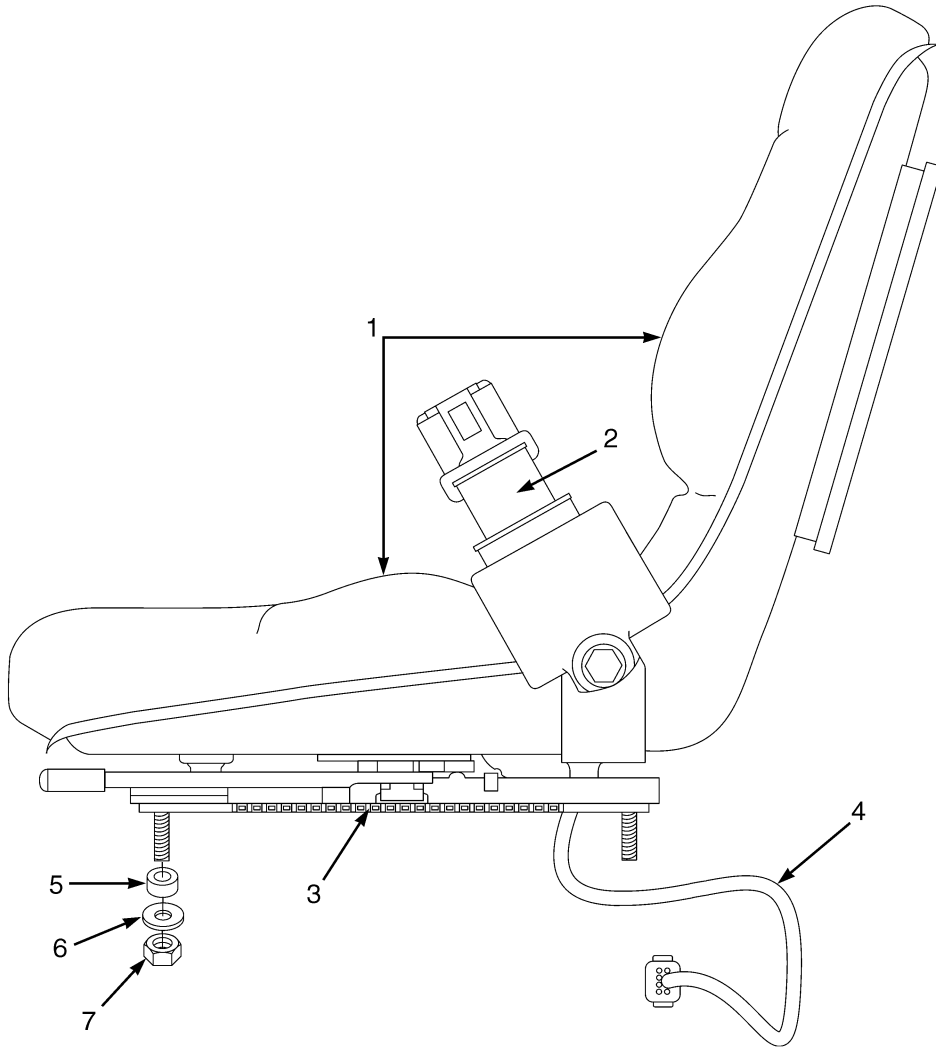


HP120254

**NON-SUSPENSION SEAT**  
**(⇒PENDING PER ECN 74952)**

ITEM	PART NO.	DESCRIPTION	QTY
	1460231	Non-Suspension Seat.....	1
1	364911	Seat.....	1
2	2037311	Switch Assembly .....	1
3	1461081	Seat Belt Kit.....	1
4	.....	Seat Belt .....	1
5	.....	Screw .....	2
6	.....	Washer.....	2
7	.....	Washer.....	2
8	.....	Nut .....	2
9	335988	Base .....	1
10	335991	Cover .....	1
11	1470175	Bracket .....	1
12	1470176	Seat Rail.....	1
13	1470177	Seat Rail.....	1
14	18498	Capscrew.....	4
15	145639	Nut .....	4
16	15175	Washer .....	4
17	.....	Rivet.....	4

## NON-SUSPENSION SEAT (Figure 1-3) (PENDING PER ECN 74952⇒)



BP120183



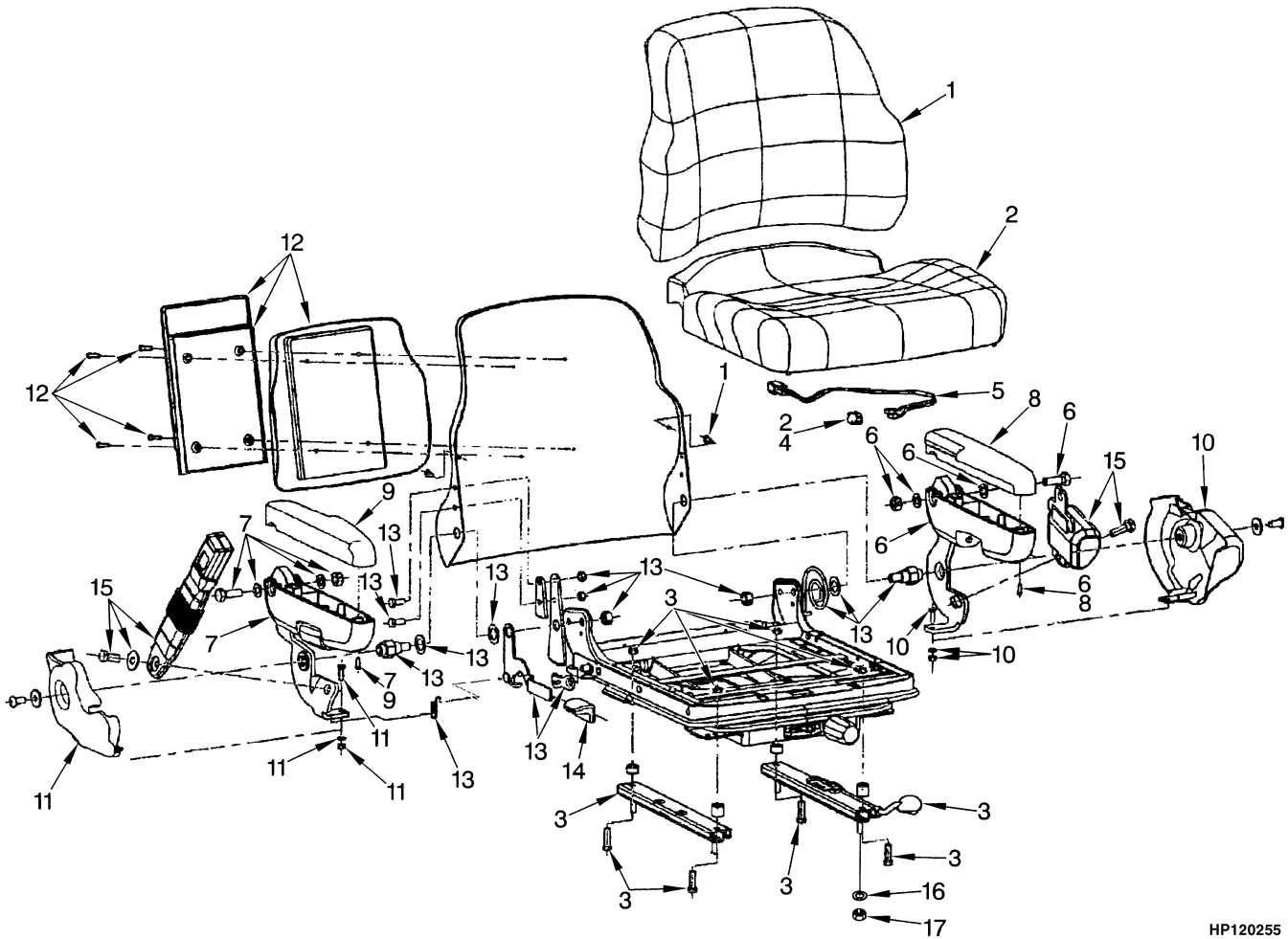
**NON-SUSPENSION SEAT  
(PENDING PER ECN 74952⇒)**

ITEM	PART NO.	DESCRIPTION	QTY
	1593409	Non-Suspension Seat (Vinyl).....	1
1	1563351	Cushions (Vinyl) .....	1
	<b>a</b> 1563215	Sensor (Operator Presence) .....	1
2	1598504	Seat Belt Kit.....	1
3	1459173	Slide Kit .....	1
4	2075429	Wire Harness .....	1
5	<b>b</b> 1484643	Spacer .....	4
6	15175	Washer .....	4
7	145639	Nut .....	4

**FOOTNOTES:**

- a** Not Illustrated
- b** Not used with this application

## FULL SUSPENSION SEAT (Figure 1-4) SHEET 1 OF 2 (⇒PENDING PER ECN 74952)

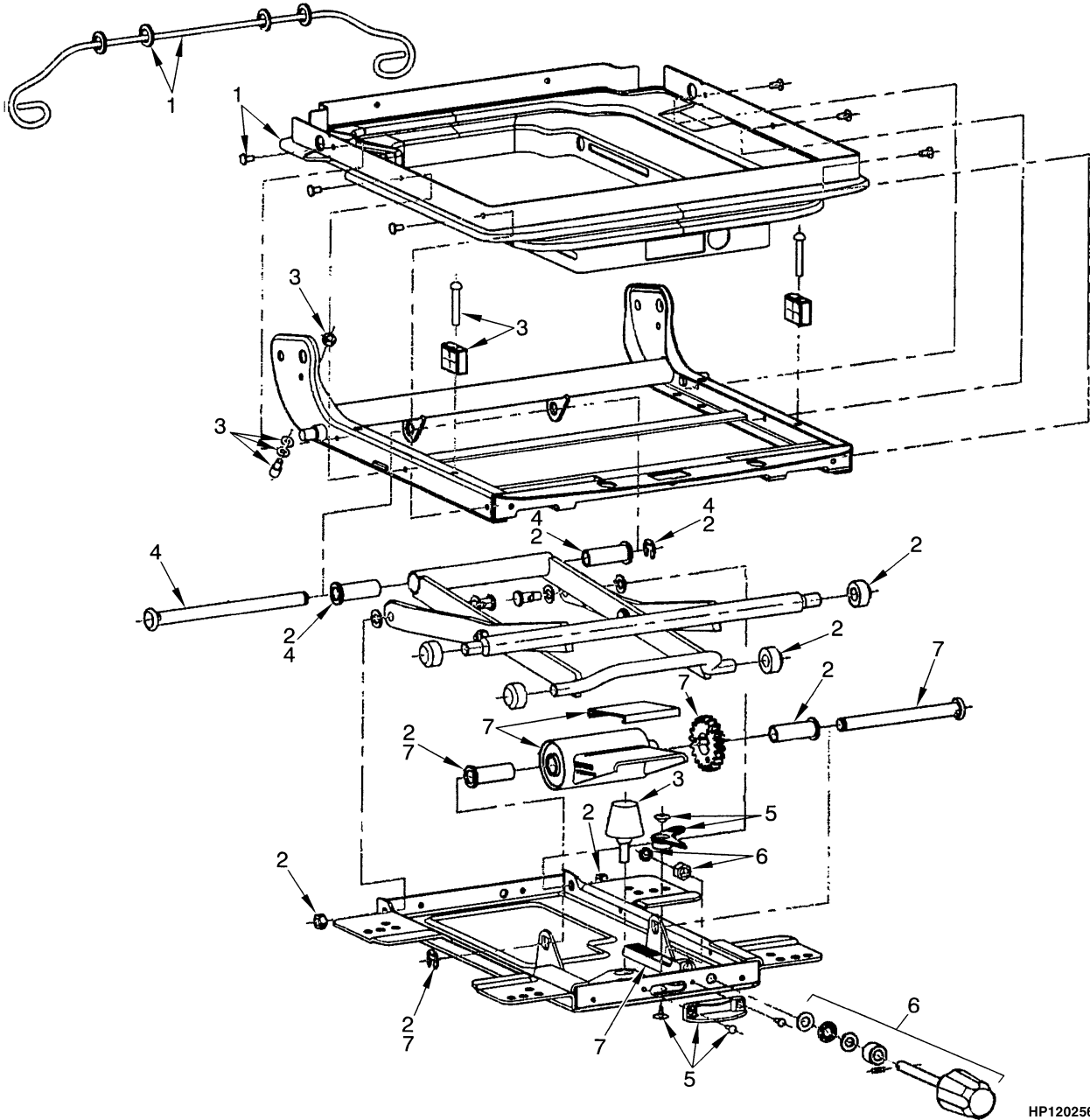


HP120255

**FULL SUSPENSION SEAT  
SHEET 1 OF 2  
(=>PENDING PER ECN 74952)**

ITEM	PART NO.	DESCRIPTION	QTY
	1466006	Full Suspension Seat (Vinyl Cover) .....	1
	1466007	Full Suspension Seat (Fabric Cover) .....	1
1	1467533	Back Cushion (Vinyl) .....	1
1	1467535	Back Cushion (Fabric) .....	1
2	1494076	Seat Cushion (Vinyl).....	1
2	1467536	Seat Cushion (Fabric) .....	1
3	1467513	Slider Kit .....	1
4	1467514	Switch (Seat) .....	1
5	1467515	Wire Harness .....	1
6	1467516	Armrest (LH) (LH).....	1
7	1467517	Armrest (RH) (RH) .....	1
8	1467518	Cap (LH).....	1
9	1467519	Cap (RH) .....	1
10	1467520	Cover (LH) .....	1
11	1467521	Cover (RH) .....	1
12	1467522	Holder Kit.....	1
13	1467530	Recliner Kit.....	1
14	1467531	Recliner Knob.....	1
15	1467532	Seat Belt Kit.....	1
16	15175	Washer .....	4
17	145639	Nut .....	4

## FULL SUSPENSION SEAT (Figure 1-5) SHEET 2 OF 2 (⇒PENDING PER ECN 74952)

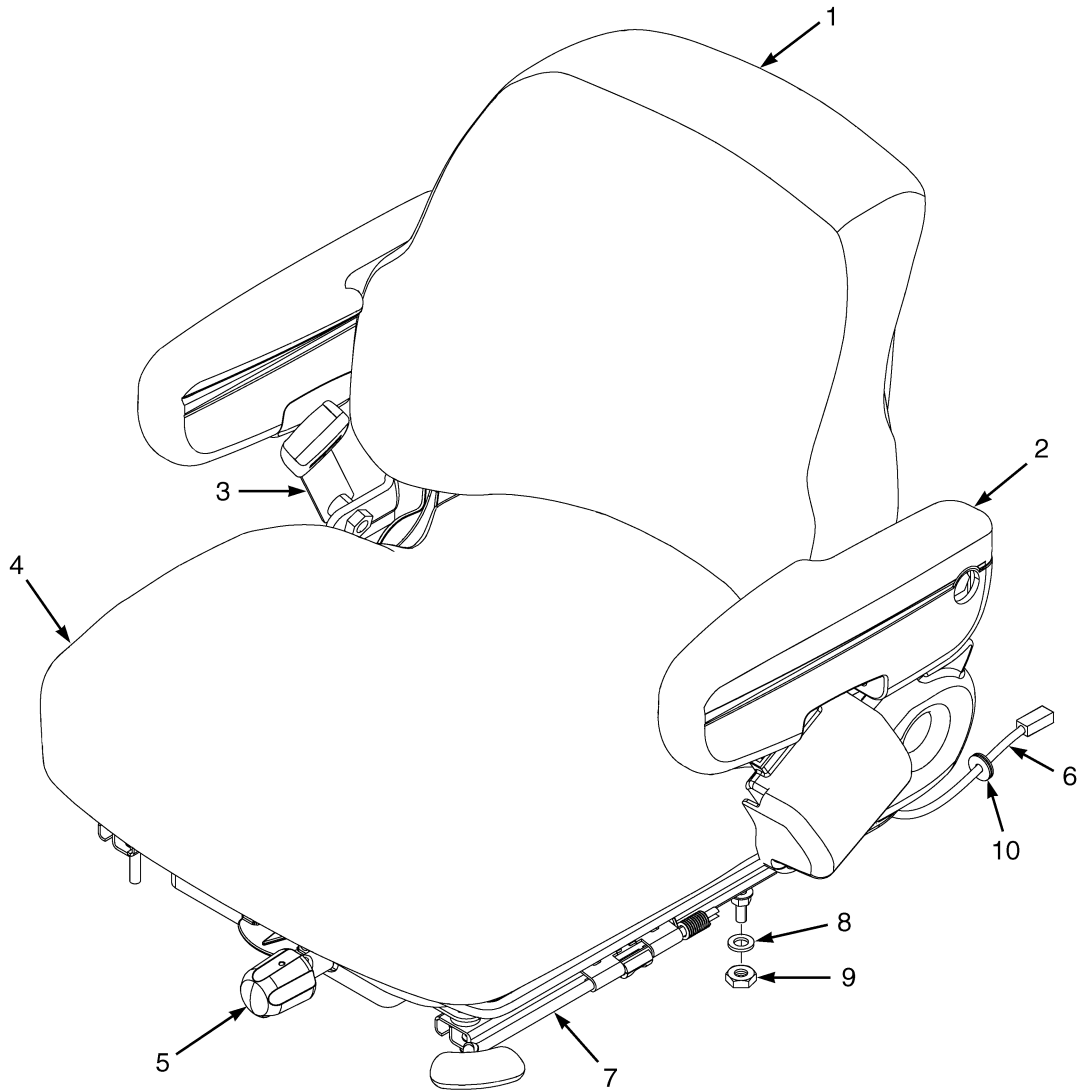


HP120256

**FULL SUSPENSION SEAT  
SHEET 2 OF 2  
(⇒PENDING PER ECN 74952)**

ITEM	PART NO.	DESCRIPTION	QTY
	1466006	Full Suspension Seat (Vinyl Cover) .....	1
	1466007	Full Suspension Seat (Fabric Cover) .....	1
1	1467523	Boot Kit.....	1
2	1467524	Roller and Bearing Kit .....	1
3	1467525	Bumper and Stop Kit .....	1
4	1467526	Bearing Shaft Kit .....	1
5	1467527	Weight Adjuster Indicator Kit .....	1
6	1467528	Knob Kit.....	1
7	1467529	Suspension Spring Kit.....	1

## FULL SUSPENSION SEAT (Figure 1-6) (PENDING PER ECN 74952⇒)



BP120178

**FULL SUSPENSION SEAT  
(PENDING PER ECN 74952⇒)**

**KEY:**

**A: Vinyl**

**B: Cloth**

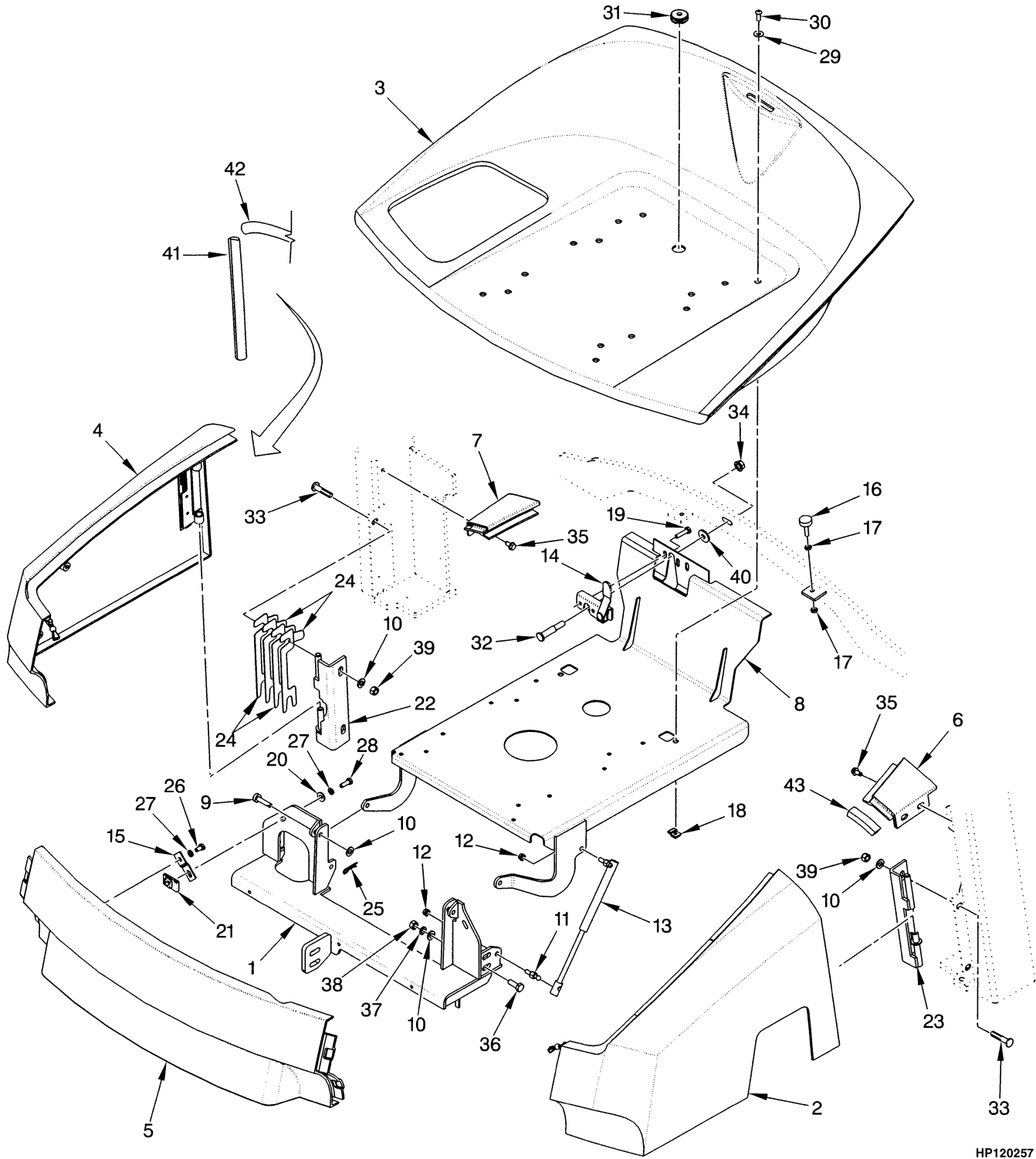
ITEM	PART NO.	DESCRIPTION	QTY	
			A	B
	1593413	Full Suspension Seat.....	1	..
	1593414	Full Suspension Seat.....	..	1
1	1470152	Back Cushion (Vinyl) .....	1	1
1	1470153	Back Cushion (Cloth) .....	..	1
2	1563230	Arm Cushion (LH) .....	1	1
2	1563231	Arm Cushion (RH).....	1	1
3	1598504	Seat Belt Kit.....	1	1
4	1563207	Seat Cushion (Vinyl).....	1	..
4	1566453	Seat Cushion (Cloth).....	..	1
	<b>a</b> 1563208	Sensor (Operator Presence) .....	1	1
5	1470163	Weight Adjuster Kit.....	1	1
6	2075429	Wire Harness .....	1	1
7	1470161	Slide Kit .....	1	1
8	<b>b</b> 1484643	Spacer .....	..	..
9	15175	Washer .....	4	4
10	145639	Nut .....	4	4
	<b>a</b> 1483828	Shock Kit.....	1	1

**FOOTNOTES:**

**a** Not Illustrated

**b** Not used with this application

## HOOD AND COVERS (Figure 1-7)



HP120257



**HOOD AND COVERS**

ITEM	PART NO.	DESCRIPTION	QTY
1	1491109	Crossmember .....	1
2	1397957	Panel (LH) (LPG) .....	1
2	1397958	Panel (LH) (Diesel) .....	1
3	<b>a</b> 1397960	Hood .....	1
3	<b>b</b> 1610832	Hood .....	1
4	1396626	Panel (RH) .....	1
5	1396625	Cover (Front).....	1
5	1392718	Latch.....	2
6	1397964	Corner (LH) (Without Cab) .....	1
6	1485280	Corner (LH) (With Cab) .....	1
7	1397963	Corner (RH) (Without Cab).....	1
7	1485281	Corner (RH) (With Cab).....	1
8	1488684	Seat Pan .....	1
9	2021207	Pin .....	2
10	320159	Washer .....	6
11	1350285	Stud (Ball).....	1
12	316835	Nut .....	4
13	1518858	Gas Spring Assembly .....	2
13	1513907	Ball Stud .....	2
14	2036143	Latch .....	1
15	2036866	Bracket.....	2
16	1347088	Stop Screw .....	2
17	15001	Nut .....	4
18	1385535	Nut .....	2
19	1529238	Capscrew.....	2
20	320158	Washer .....	4
21	1364259	Clip Nut.....	2
22	1470010	Hinge (RH).....	1
22	156133	Nut (Not illustrated).....	4
23	1470009	Hinge (LH) .....	1
24	2036142	Shim (1,194 mm) .....	4
25	1362714	Cotter Pin.....	2
26	287851	Capscrew.....	2
27	292681	Lockwasher.....	6
28	136749	Capscrew.....	2
29	375629	Washer .....	2
30	370599	Capscrew.....	2
31	<b>a</b> 1359587	Grommet.....	1
31	<b>b</b> 1561015	Grommet.....	1
32	1471866	Striker .....	1
33	220023	Bolt .....	4
34	264144	Nut .....	1
35	316678	Screw.....	4
36	136985	Capscrew.....	8
37	320157	Washer .....	2
38	316826	Nut .....	4
39	156133	Nut .....	8
40	2036863	Washer .....	1
41	1464909	Trim Seal.....	2

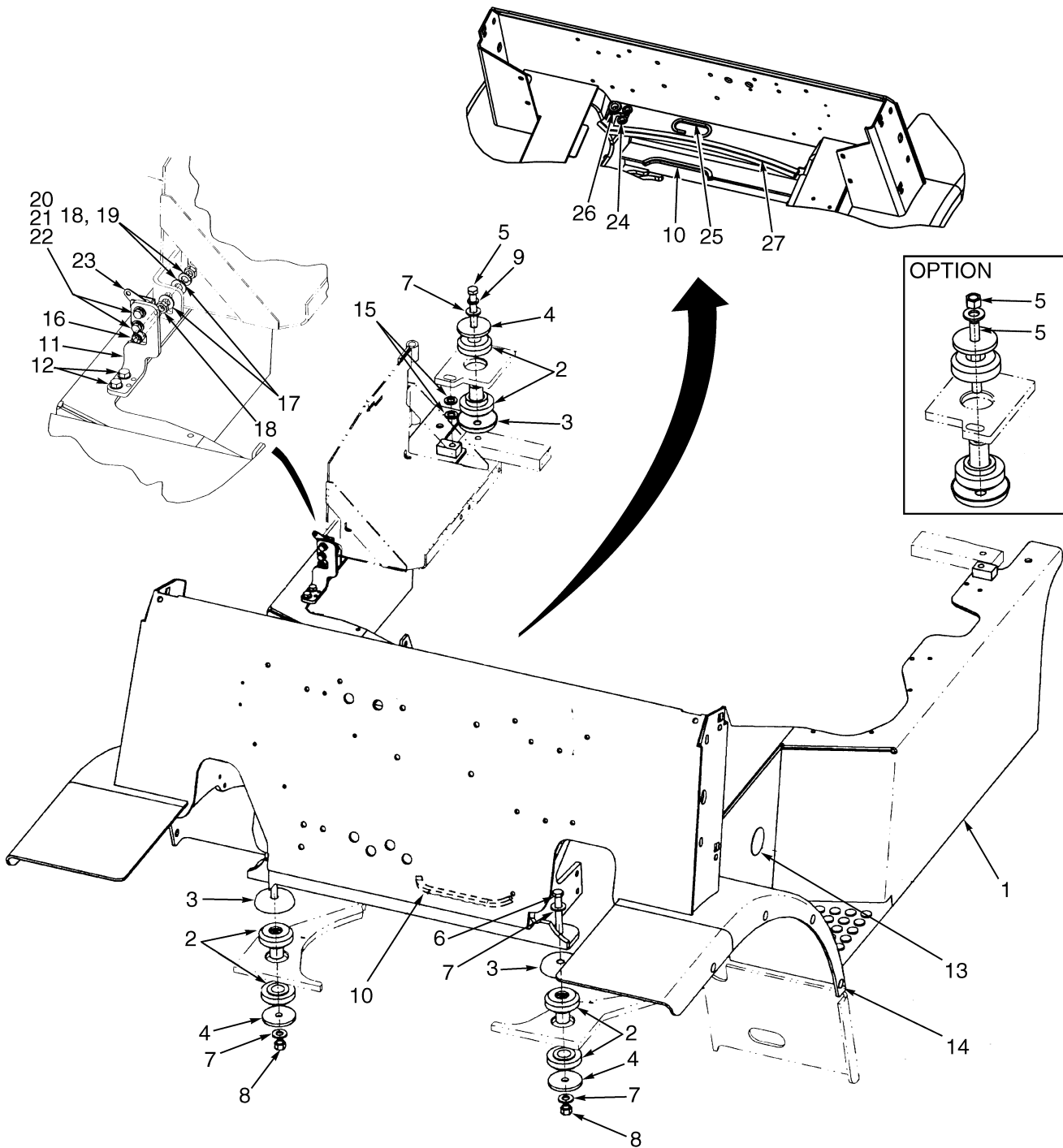
## HOOD AND COVERS

ITEM	PART NO.	DESCRIPTION	QTY
42	1396658	Seal .....	2
43	1466416	Seal .....	2

**FOOTNOTES:**

- a ⇒ PENDING PER ECN 74952
- b PENDING PER ECN 74952 ⇒

## OPERATOR COMPARTMENT (Figure 1-8)

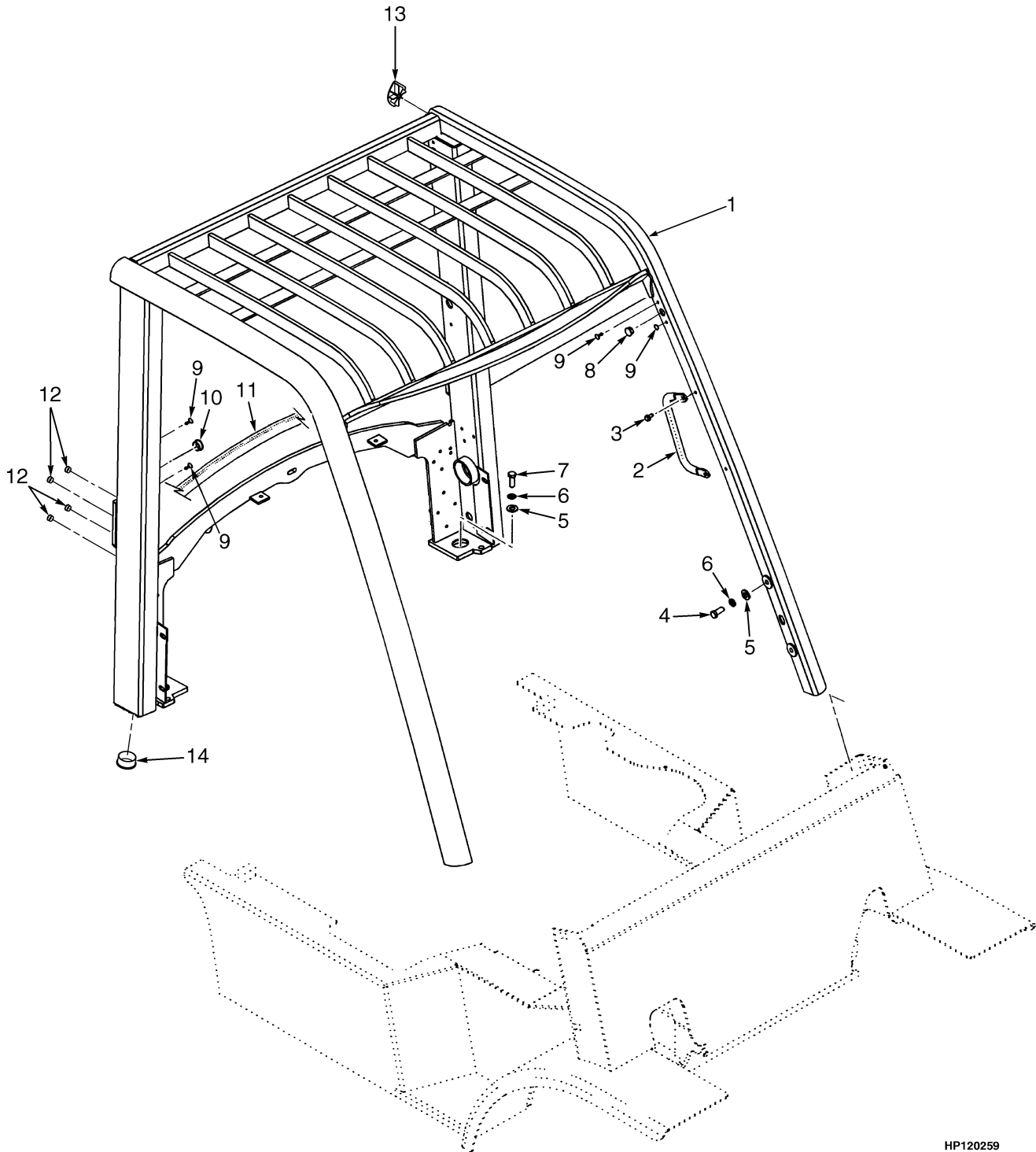


HP120735

**OPERATOR COMPARTMENT**

ITEM	PART NO.	DESCRIPTION	QTY
1	.....	Operator Module.....	1
2	1378168	Mount.....	4
3	1378197	Cup .....	4
3	1351098	Cup (Optional) .....	4
4	300939	Washer .....	4
5	293657	Capscrew.....	2
5	2037998	Stud (Optional) .....	2
5	302402	Locknut (Optional) .....	2
6	293658	Capscrew.....	2
7	296423	Washer .....	6
8	302402	Locknut .....	2
9	292683	Lockwasher.....	2
10	1396024	Trim .....	1
11	1476761	Bracket.....	1
12	316678	Screw.....	2
13	1398009	Plug .....	2
14	1399760	Plug .....	8
15	296422	Washer .....	4
16	18762	Capscrew.....	1
17	15134	Washer .....	2
18	15086	Nut .....	2
19	15156	Lockwasher.....	1
20	18462	Capscrew.....	2
21	15154	Lockwasher.....	2
22	15127	Washer .....	2
23	1476422	Latch (Rotary).....	1
24	1367645	Grommet.....	2
25	2069375	Trim Seal.....	1
26	304195	Grommet.....	1
27	1520292	Trim Seal.....	1

## OVERHEAD GUARD (Figure 1-9)

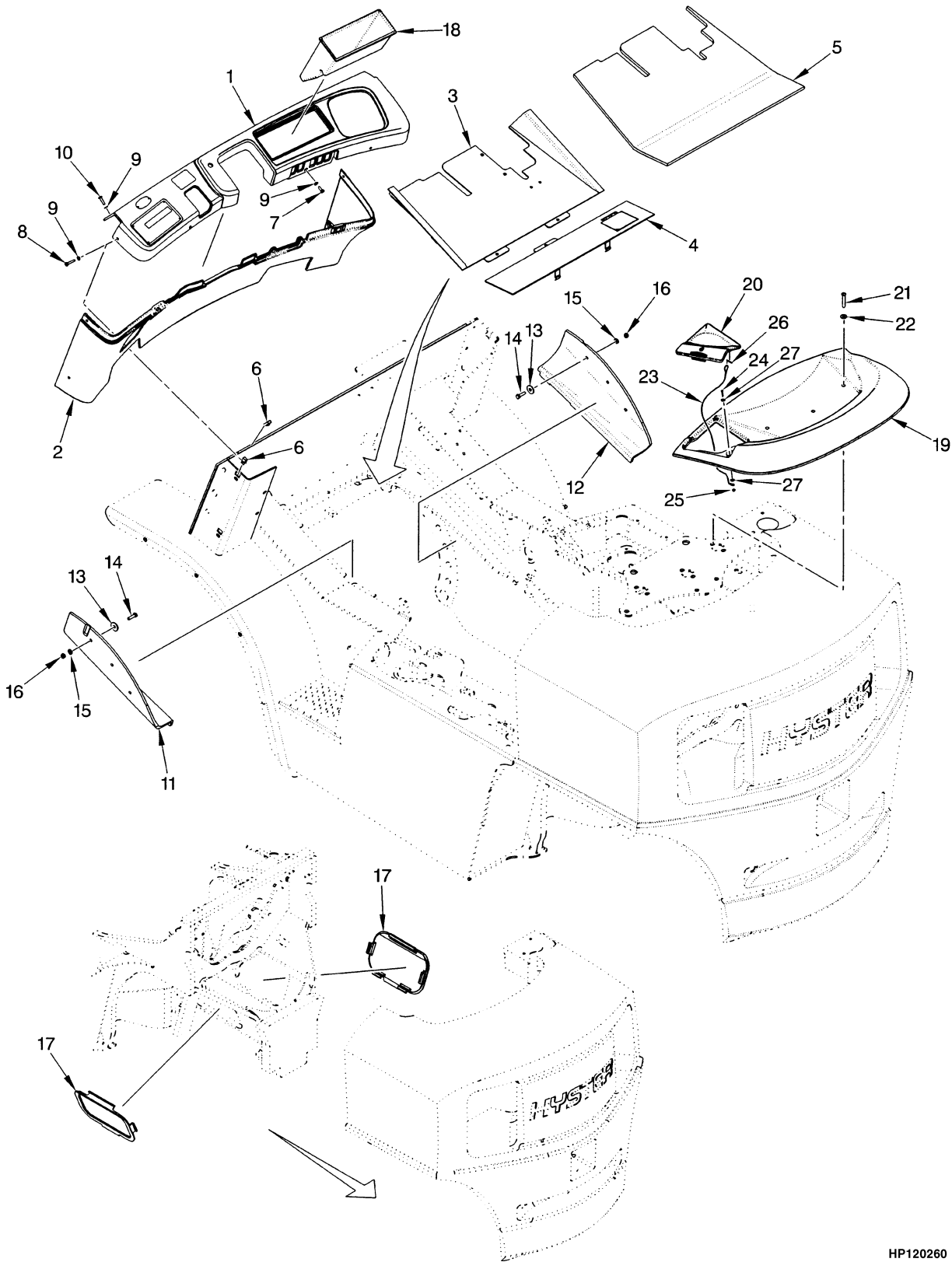


HP120259

**OVERHEAD GUARD**

ITEM	PART NO.	DESCRIPTION	QTY
1	1483504	Overhead Guard (Standard Height).....	1
1	1479585	Overhead Guard (Raised Height).....	1
2	2035800	Handle .....	1
3	316678	Screw.....	2
4	293644	Capscrew.....	4
5	296423	Washer .....	6
6	292683	Lockwasher.....	6
7	293646	Capscrew.....	2
8	1363917	Plug .....	6
9	1363916	Plug .....	14
10	1363918	Plug .....	4
11	1465740	Seal .....	1
12	1494888	Plug .....	2
13	1479633	Plug (Top Rail End Cap) .....	4
14	1356377	Plug .....	2

## FLOOR PLATES AND COVERS (Figure 1-10)



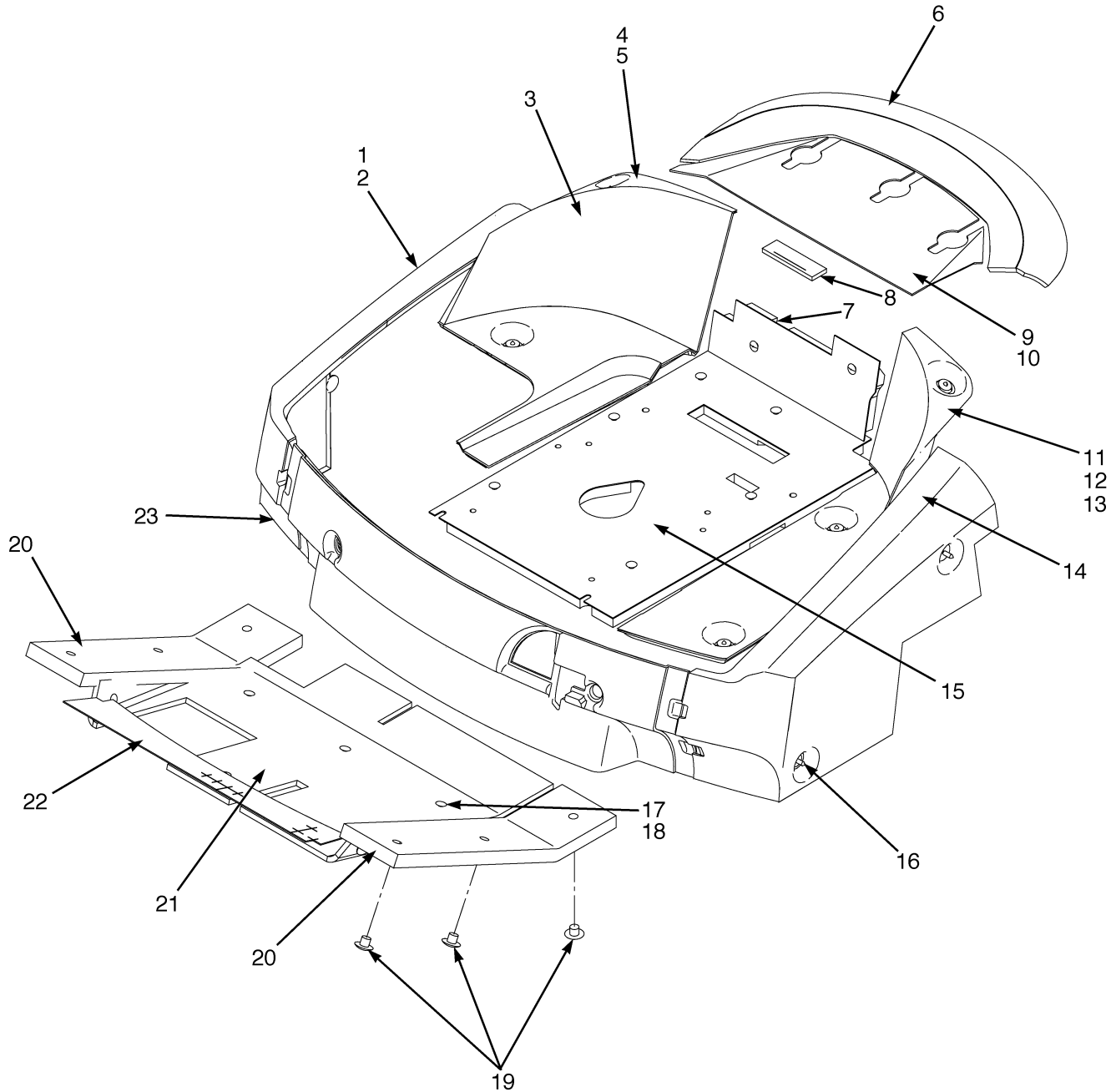
HP120260

**FLOOR PLATES AND COVERS**

ITEM	PART NO.	DESCRIPTION	QTY
1	1396147	Dash .....	1
2	1396148	Cowl Panel.....	1
3	2035798	Floorplate (Front).....	1
4	2035980	Floorplate.....	1
5	1396641	Floormat .....	1
6	1350215	Nut (Foldover).....	6
7	1525246	Screw.....	3
8	1525248	Screw.....	4
9	1399399	Washer .....	9
10	1525247	Screw.....	2
11	1399338	Flap (LH Cylinder) .....	1
12	1399337	Flap (RH Cylinder).....	1
13	1334790	Washer .....	6
14	176640	Capscrew.....	6
15	320157	Washer .....	6
16	302400	Locknut .....	6
17	2036875	Cover .....	2
18	1338286	Storage Compartment (For OHG Only).....	1
18	1400207	Cover (For Cabs Only).....	1
19	1385498	Cover (Radiator) .....	1
20	1396009	Radiator Cap Door (LPG) .....	1
20	1396012	Radiator Cap Door (Diesel) .....	1
21	1382107	Capscrew.....	3
22	375629	Washer .....	3
23	1400180	Lanyard.....	1
24	296510	Screw.....	1
25	302398	Nut .....	1
26	15212	Cotter Pin.....	1
27	320156	Washer .....	2



## SOUND REDUCTION (Figure 1-11)



BP120079

**SOUND REDUCTION**

ITEM	PART NO.	DESCRIPTION	QTY
1	1400154	Liner (RH Door Panel) .....	1
2	1467344	Barrier (RH Door Panel) .....	1
3	1400152	Liner (RH Hood) .....	1
4	1467338	Barrier (RH Seat Panel).....	1
5	1467340	Barrier (RH Seat Panel).....	1
6	1468032	Sound Liner (Radiator Cover).....	1
7	1544743	Sound Liner (Seat) "C" .....	1
8	1490766	Pad (Latch) .....	1
9	1468033	Sound Liner (Radiator Barrier) .....	1
10	1382126	Seal .....	1
11	1400151	Liner (LH Hood) .....	1
12	1467342	Barrier (LH Seat Panel) "A" .....	1
13	1467343	Barrier (LH Seat Panel) "B" .....	1
14	1400153	Liner (LH Door Panel) .....	1
14	1467345	Barrier (LH Door Panel) .....	1
15	1544739	Sound Liner (Seat) "A".....	1
16	1304971	Fastener.....	9
17	1399815	Rivet.....	15
18	1399784	Washer .....	15
19	1361087	Button .....	6
20	2070733	Sound Liner (Floor Plate) "B".....	2
21	1468023	Sound Liner (Floor Plate) "A".....	1
22	1520300	Liner (Cowl) .....	1
23	1541805	Liner (Front Cover).....	1
23	1467347	Barrier (Front Panel) .....	1
	1468027	Barrier Kit (Includes Items 2, 4-5, 12-14, 23).....	1

**BUY NOW**

**Then Instant Download  
the Complete Manual  
Thank you very much!**