

# 690DR Excavator With All Terrain Wheeled Undercarriage

## TECHNICAL MANUAL 690DR Excavator TM124557 (English)

CALIFORNIA  
Proposition 65 Warning

Diesel engine exhaust and some of its constituents are known to the State of California to cause cancer, birth defects, and other reproductive harm.

If this product contains a gasoline engine:

 **WARNING**

The engine exhaust from this product contains chemicals known to the State of California to cause cancer, birth defects or other reproductive harm.

The State of California requires the above two warnings.

**Worldwide Construction  
And Forestry Division**

# 690DR EXCAVATOR TECHNICAL MANUAL TMT124557

## SECTION AND GROUP CONTENTS

### SECTION I—GENERAL INFORMATION

- Group I—Introduction and Safety Information
- Group II—Specifications
- Group III—Torque Values
- Group IV—Fuel and Lubricants
- Group V—Predelivery and After-Sale Inspection

### SECTION 01—WHEELS

- Group 0110—Power Wheels and Fastenings

### SECTION 02—AXLES AND SUSPENSION SYSTEMS (PROPEL)

- Group 0250—Axle Shaft, Bearings, and  
Reduction Gears
- Group 0260—Hydraulic System

### SECTION 04—ENGINE

- Group 0400—Removal and Installation

### SECTION 05—ENGINE AUXILIARY SYSTEM

- Group 0505—Cold Weather Starting Aid
- Group 0510—Cooling Systems
- Group 0515—Speed Controls
- Group 0520—Intake System
- Group 0530—External Exhaust Systems
- Group 0560—External Fuel Supply Systems

### SECTION 07—DAMPENER DRIVE (FLEX COUPLING)

- Group 0752—Elements

### SECTION 16—ELECTRICAL SYSTEMS

- Group 1671—Batteries, Support and Cables
- Group 1672—Alternator, Regulator, and  
Charging System Wiring
- Group 1673—Lighting System
- Group 1674—Wiring Harnesses and Switches

*All information, illustrations and specifications contained in this technical manual are based on the latest information available at the time of publication. The right is reserved to make changes at any time without notice.*

Copyright © 1989  
DEERE & COMPANY  
Moline, Illinois  
All rights reserved  
A John Deere ILLUSTRATION® Manual

## SECTION AND GROUP CONTENTS—Continued

### SECTION 17—FRAME, CHASSIS, OR SUPPORTING STRUCTURE

- Group 1740—Frame Installation
- Group 1749—Chassis Weights

### SECTION 18—OPERATOR'S STATION

- Group 1800—Removal and Installation
- Group 1810—Operator Enclosure
- Group 1821—Seat and Support
- Group 1830—Heating and Air Conditioning

### SECTION 19—SHEET METAL AND STYLING

- Group 1910—Hood or Engine Enclosure

### SECTION 32—DOZERS

- Group 3201—Blade
- Group 3240—Frames
- Group 3260—Dozer Hydraulics

### SECTION 33—EXCAVATOR

- Group 3302—Buckets
- Group 3340—Frames
- Group 3360—Hydraulic System

### SECTION 43—SWING ROTATION OR PIVOTING SYSTEM

- Group 4311—Brakes
- Group 4350—Mechanical Drive Elements
- Group 4360—Hydraulic System

### SECTION 9005—OPERATIONAL CHECKOUT PROCEDURE

- Group 10—System Operational Checkout Procedure

### SECTION 9010—ENGINE OPERATION AND TESTS

- Group 05—Theory of Operation
- Group 10—System Operational Checks
- Group 15—System Diagnostic Checks
- Group 20—Adjustments
- Group 25—Tests

### SECTION 9015—ELECTRICAL SYSTEM OPERATION AND TESTS

- Group 00—Electrical System Operation and Tests

### SECTION 9020—POWER TRAIN OPERATION AND TESTS

- Group 05—Theory of Operation
- Group 10—System Operational Checks
- Group 15—System Diagnostic Checks
- Group 20—Adjustments
- Group 25—Tests

### SECTION 9025—HYDRAULIC SYSTEM OPERATION AND TESTS

- Group 05—Theory of Operation
- Group 10—System Operational Checks
- Group 15—System Diagnostic Checks
- Group 20—Adjustments
- Group 25—Tests

### SECTION 99—DEALER FABRICATED TOOLS

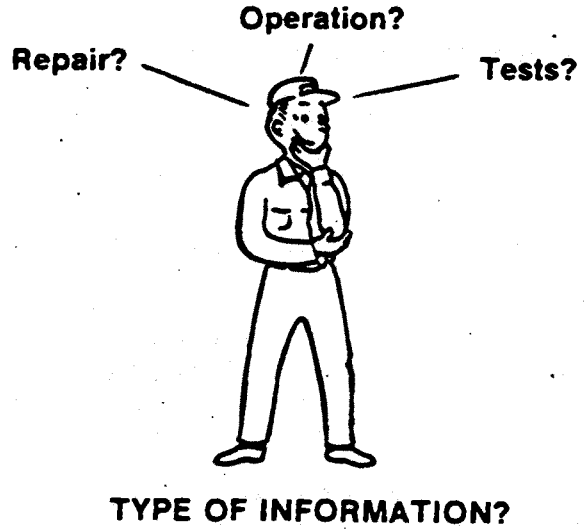
- Group 9900—Fabricated Tools

### THREE-STEP PROCEDURE

Use the following three-step procedure to locate the desired information.

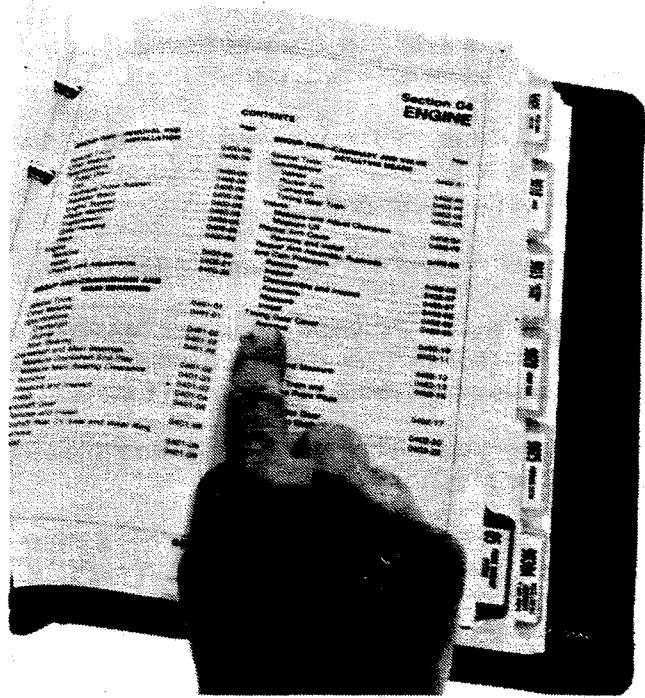
1. Determine the type of information you need. Is it repair, operation, or tests?
2. Go to the appropriate section tab:

Gray for Repair  
Yellow for Operation or Tests



018;T5940AT T82;FLPD L 260785

3. Use the table of contents on the first page of the section to locate the information.



018;T5933AF T82;FLPD M 260785

## SAFETY AND YOU

This safety-alert symbol means **ATTENTION! BECOME ALERT! YOUR SAFETY IS INVOLVED!**

When you see this symbol on your machine or in your manual, be alert to the possibility of personal injury. Follow the instructions in the safety message.

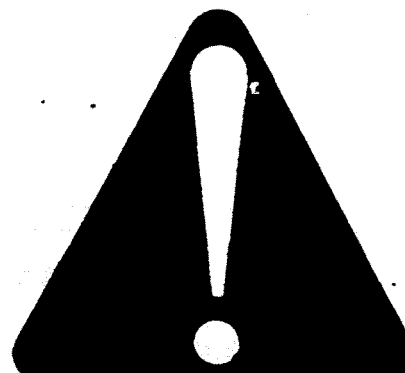


014781389 TR2:FLPD R 041104

## RECOGNIZE SAFETY INFORMATION

This is the safety-alert symbol. When you see this symbol on your machine or in this manual, be alert to the potential for personal injury.

Follow recommended precautions and safe operating practices.



AB6;T81389 053;ALERT 160687

## UNDERSTAND SIGNAL WORDS

A signal word—**DANGER**, **WARNING**, or **CAUTION**—is used with the safety-alert symbol. **DANGER** identifies the most serious hazards.

Safety signs with signal word **DANGER** or **WARNING** are typically near specific hazards.

General precautions are listed on **CAUTION** safety signs. **CAUTION** also calls attention to safety messages in this manual.



**WARNING**

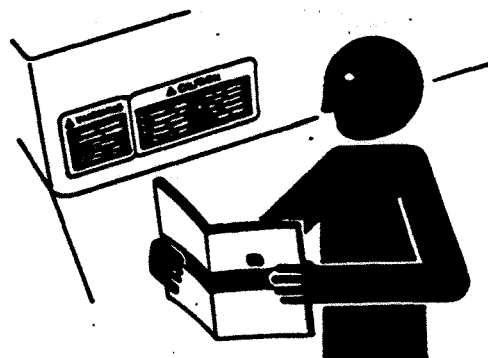
**CAUTION**

AB6;TS187 053;SIGNAL 071085

## FOLLOW SAFETY INSTRUCTIONS

Carefully read all safety messages in this manual and on your machine safety signs. Follow recommended precautions and safe operating practices.

Keep safety signs in good condition. Replace missing or damaged safety signs.



## USE HANDHOLDS AND STEPS

When you get on and off machine, always maintain a three point contact with steps and handrails and face machine. Do not use any controls as handholds.

Never jump either on or off the machine. Never mount or dismount a moving machine.

Be careful of slippery conditions on platforms, steps, and handrails when mounting or dismounting.



018;T6192AH 027;05-FF4 010487

## START ENGINE FROM OPERATOR'S SEAT

Avoid possible injury or machine damage. Do not start engine by shorting across starter terminals.

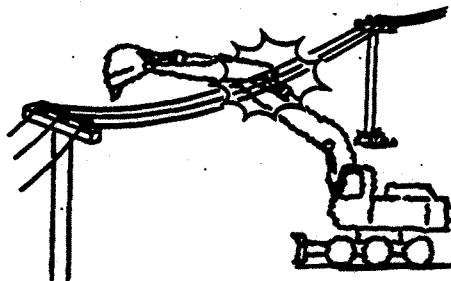
NEVER start engine while standing on ground. Start engine only from operator's seat.

T82;EXSA V 030487

## AVOID POWER LINES

Serious injury or death can result from contact with electric lines.

Never move any part of the machine or load closer to electric line than 10 ft (3 m) plus twice the line insulator length. Use a signal person to guide operator. Use shrouds or insulators as necessary.



**BUY NOW**

**Then Instant Download  
the Complete Manual  
Thank you very much!**