

# TM

## Technical Manual

**John Deere  
925, 935, 945,  
955, 965 and 975  
Combines**

**TM-4307**



# Combines 925, 935, 945, 955, 965, and 975

Technical Manual  
TM-4307 (March-76)

**GENERAL 10**

**ENGINE 20**

**FUEL SYSTEM 30**

**ELECTRICAL SYSTEM 40**

All information, illustrations, and specifications contained in this technical manual are based on the latest information available at the time of publication. The right is reserved to make changes at any time without notice.

**POWER TRAIN 50**

**BRAKES AND REAR AXLE 60**

**HYDRAULIC SYSTEM 70**

**MISCELLANEOUS 80**

Copyright © 1977  
DEERE & COMPANY  
European Office  
D 68 Mannheim  
All rights reserved

**CUTTING PLATFORM AND CORN HEAD 100**

**FEEDER HOUSE 110**

**SEPARATOR AND CLEANING UNIT 120**

**ELEVATORS, GRAIN TANK  
AND UNLOADING AUGERS 130**

# Section 10 General 10

## CONTENTS OF THIS SECTION

	Page		Page
<b>GROUP 5 — GENERAL</b>			
Serial numbers . . . . .	5-3	Removal and Installation of Front Axle — Combines 925, 935 and 945	
Model numbers . . . . .	5-5	Removal . . . . .	25-10
Specifications . . . . .	5-5	Installation . . . . .	25-12
<b>GROUP 10 — PREDELIVERY INSPECTION, DELIVERY SERVICE AND AFTER-SALES INSPECTION</b>		Removal and Installation of Front Axle — Combines 955, 965 and 975	
Predelivery inspection . . . . .	10-1	Removal . . . . .	25-13
Delivery service . . . . .	10-6	Installation . . . . .	25-14
After-sales inspection . . . . .	10-7	Removal and Installation of Transmission — Combines 925, 935 and 945	
<b>GROUP 15 — LUBRICATION AND PERIODIC SERVICE</b>		Removal . . . . .	25-14
General information . . . . .	15-1	Installation . . . . .	25-15
<b>GROUP 20 — ENGINE AND COMBINE TUNE-UP AND ADJUSTMENTS</b>		Removal and Installation of Transmission — Combines 955, 965 and 975	
General information . . . . .	20-1	Removal . . . . .	25-15
Preliminary engine testing . . . . .	20-1	Installation . . . . .	25-16
Engine tune-up . . . . .	20-3	Removal and Installation of Final Drives — Combines 955, 965 and 975	
Checking engine performance . . . . .	20-4	Removal . . . . .	25-17
Combine adjustments . . . . .	20-4	Installation . . . . .	25-17
Standard torques . . . . .	20-6	Removal and Installation of Rear Axle — Combines 925, 935, 945 and 955	
Special tools . . . . .	20-7	Removal . . . . .	25-17
<b>GROUP 25 — SEPARATION</b>		Installation . . . . .	25-18
Removal and Installation of Engine — Combines 925 and 935		Removal and Installation of Rear Axle — Combines 965 and 975	
General information . . . . .	25-1	Removal . . . . .	25-18
Removal . . . . .	25-1	Installation . . . . .	25-19
Installation . . . . .	25-3	Removal and Installation of Hydraulic Steering Unit	
Removal and Installation of Engine — Combines 945 and 955		Removal . . . . .	25-19
General information . . . . .	25-3	Installation . . . . .	25-20
Removal . . . . .	25-3		
Installation . . . . .	25-5		
Removal and Installation of Engine — Combines 965 and 975			
General information . . . . .	25-6		
Removal . . . . .	25-6		
Installation . . . . .	25-10		

	Page
Removal and Installation of Three Spool Control Valve — Combines 925, 935, 945 and 955	
Removal . . . . .	25-21
Installation . . . . .	25-21
Removal and Installation of Single Spool Control Valve — Combine 955	
Removal . . . . .	25-22
Installation . . . . .	25-23
Removal and Installation of Seven Spool Control Valve — Combines 965 and 975	
Removal . . . . .	25-23
Installation . . . . .	25-24
Removal and Installation of Bowden Cables for Seven Spool Control Valve — Combines 965 and 975	
Removal . . . . .	25-24
Installation . . . . .	25-26
Removal and Installation of Hydraulic Pump — Combine 925	
Removal . . . . .	25-25
Installation . . . . .	25-26
Removal and Installation of Hydraulic Pump — Combines 935, 945 and 955	
Removal . . . . .	25-26
Installation . . . . .	25-27
Removal and Installation of Hydraulic Pump — Combines 965 and 975	
Removal . . . . .	25-28
Installation . . . . .	25-28
Removal and Installation of Brake Master Cylinder	
Removal . . . . .	25-29
Installation . . . . .	25-30

	Page
Removal and Installation of Clutch Master Cylinder — Combines 965 and 975	
Removal . . . . .	25-30
Installation . . . . .	25-30
Removal and Installation of Steering Cylinder	
Removal . . . . .	25-31
Installation . . . . .	25-31
Removal and Installation of Engine Clutch — Combines 925, 935 and 945	
Removal . . . . .	25-31
Installation . . . . .	25-32
Removal and Installation of Engine Clutch — Combines 955 and 965	
Removal . . . . .	25-32
Installation . . . . .	25-34
Removal and Installation of Posi Torq Ground Drive — Combine 975	
Removal of upper unit . . . . .	25-34
Removal of lower unit . . . . .	25-35
Installation of upper and lower unit . . . . .	25-36
Removal and Installation of Reverser Clutch — Combines 965 and 975	
Removal and installation . . . . .	25-37
Removal and Installation of Hydraulic Swing Unloading Auger — Combines 965 and 975	
Removal . . . . .	25-37
Installation . . . . .	25-38
Torques for hardware . . . . .	25-39
Special tools . . . . .	25-39

# Group 5 Specifications 10

## SERIAL NUMBERS

*NOTE: Please quote all the serial numbers stamped in the appropriate serial number plate when ordering replacement parts for your combine, combine engine and special equipment (e.g. operator's cab, cutting platform trailer).*

Serial number plates are located as follows:

### Combine

The combine serial number is stamped into the name plate on the right-hand side of the operator's platform (see fig. 1).

The serial number is also stamped into the right-hand angle frame of the combine if the name plate gets lost for any reason (see fig. 2).

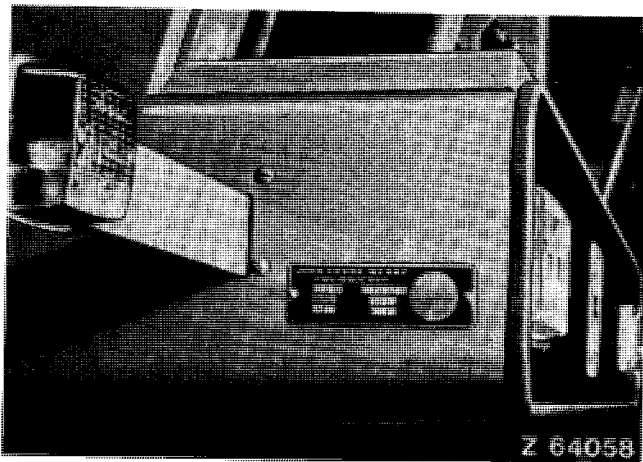


Fig. 1 — Serial Number Plate on Operator's Platform

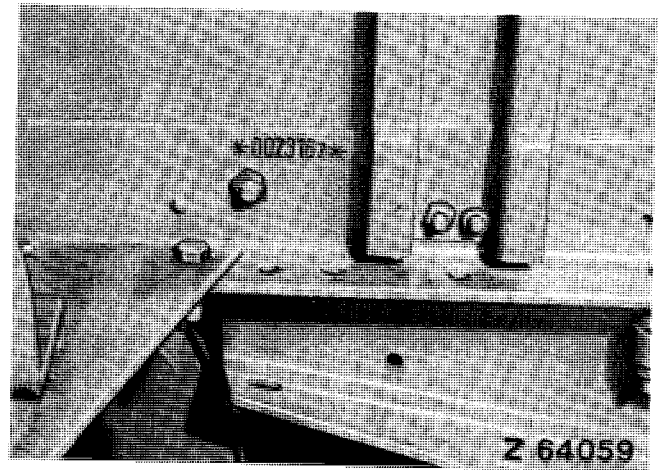


Fig. 2 — Serial Number Stamped into Angle Frame

### Engine

The serial number of a John Deere engine is stamped into the name plate on the lower right of the cylinder block near the fuel transfer pump (see fig. 3).

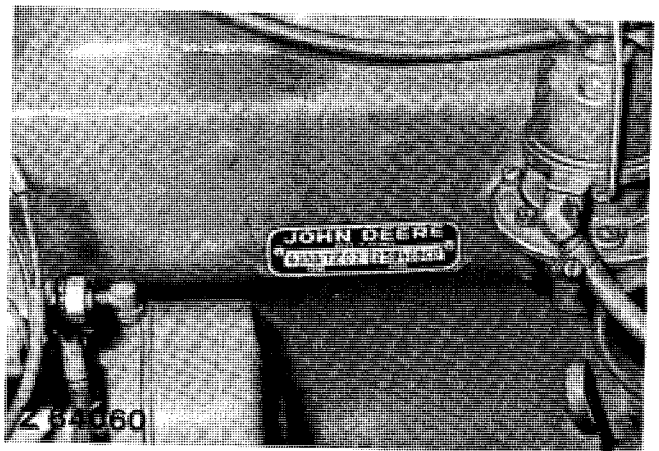


Fig. 3 — Engine Serial Number on a John Deere Engine

### Cutting Platform

The serial number of the cutting platform is stamped into a plate on the outer right-hand side panel of the platform (see fig. 4).\*

\* The various sized cutting platforms are marked as follows:

A = 7 ft. 9 in.	D = 12 ft.	F = 16 ft.
B = 8 ft. 5 in.	E = 14 ft.	G = 18 ft.
C = 10 ft.		

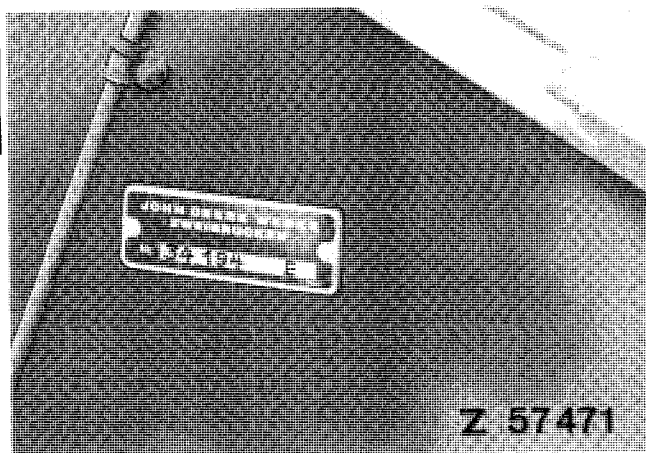


Fig. 4 — Serial Number of Cutting Platform  
(14 ft. cutting platform shown)

### Corn Head

The corn head serial number is stamped into a plate on the right-hand side below the drive guard (see fig. 5).

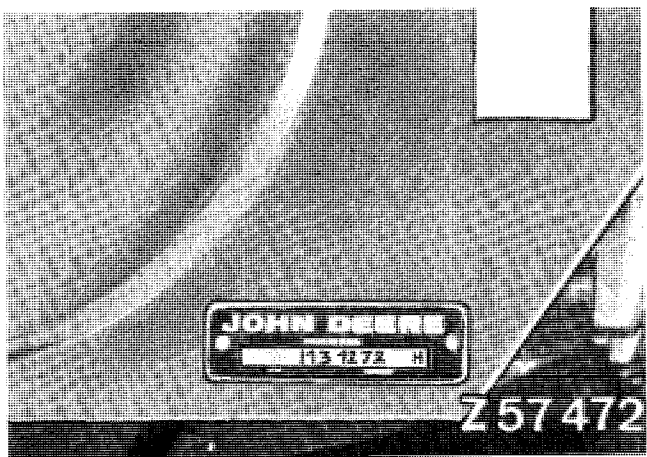


Fig. 5 — Corn Head Serial Number

### Cutting Platform Trailer

The cutting platform trailer serial number is stamped into the name plate located on the right-hand side of the trailer drawbar behind the towing eye (see fig. 6).

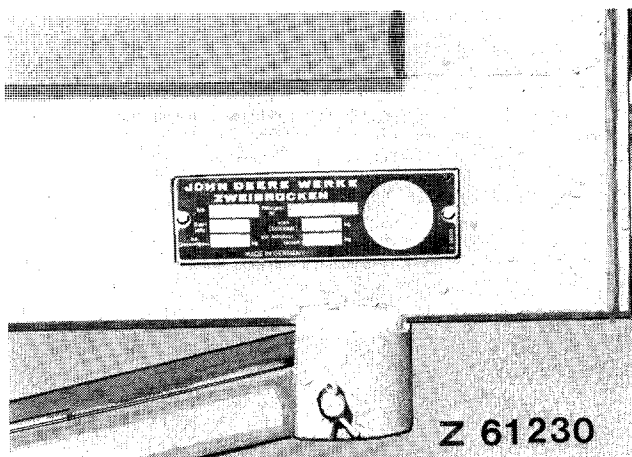


Fig. 6 — Serial Number of Cutting Platform Trailer

### Operator's Cab

The operator's cab serial number is stamped into the name plate located on the right-hand inner side panel of cab.



Fig. 7 — Serial Number of Operator's Cab

### Fuel Injection Pump

The fuel injection pump type and serial number (Roto-Diesel or Roosa-Master) is stamped into the name plate located on pump housing (see figs. 8 and 9).

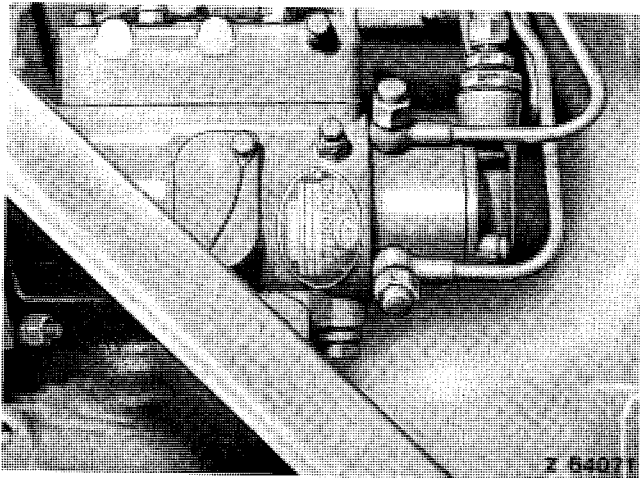


Fig. 8 — Serial Number of Fuel Injection Pump  
(Roto-Diesel on Combines 925 to 965)

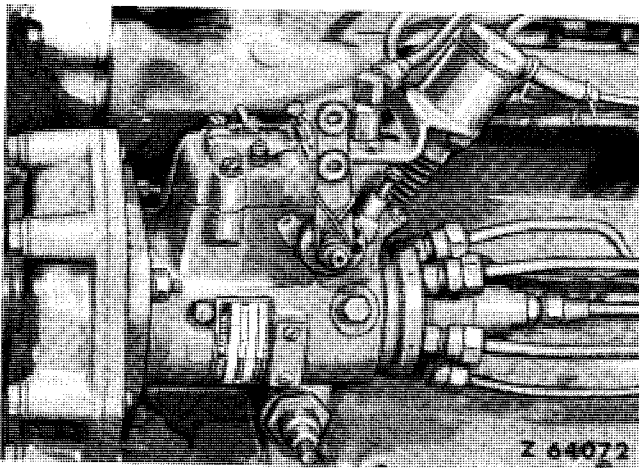


Fig. 9 — Serial Number of Fuel Injection Pump  
(Roosa-Master on Combine 975)

#### Track Assembly

The track assembly serial number is stamped into the outer side of track frame below the front idler bracket.

Left-hand track assemblies are numbered with an odd serial number. Right-hand track assemblies have an even serial number (see fig. 10).

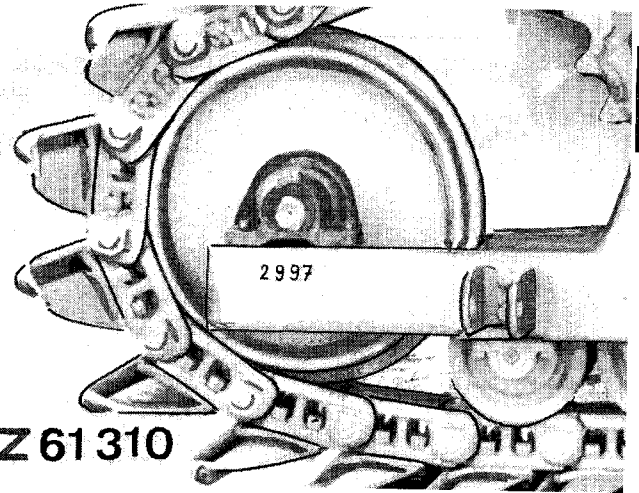


Fig. 10 — Serial Number of Track Assembly, L.H.  
Side

#### MODEL NUMBERS

The fuel injection pump, injection nozzles, alternator, starting motor and the hydraulic pump have model numbers to facilitate identification of different makes of a given unit.

#### SPECIFICATIONS

The specific operator's manual contains all the necessary specifications.



**BUY NOW**

**Then Instant Download  
the Complete Manual  
Thank you very much!**