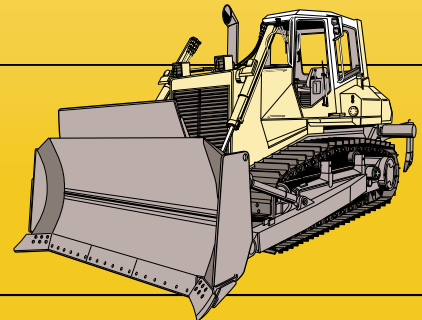
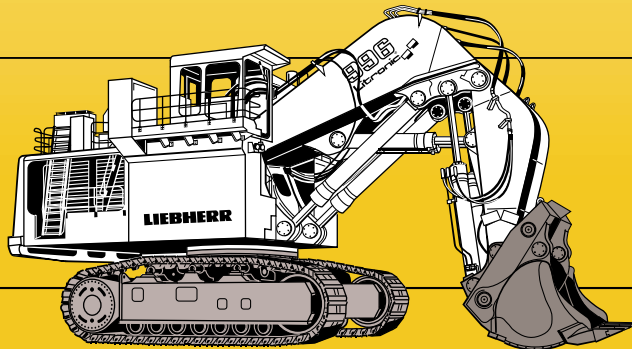
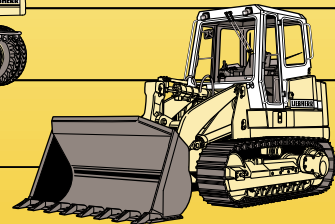
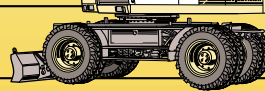
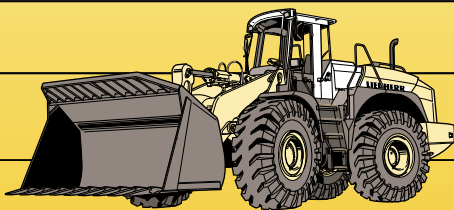
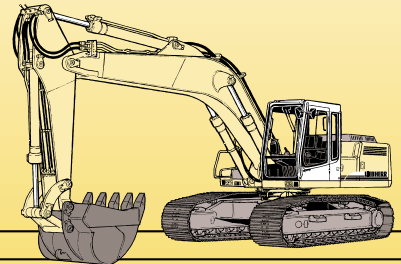
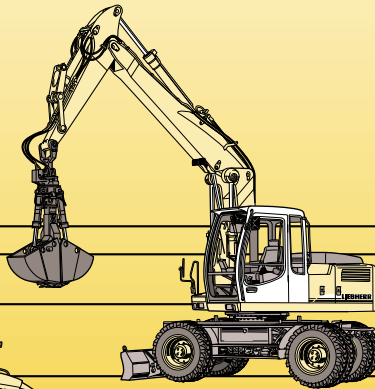
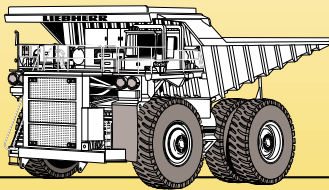


Service Manual
Crawler Dozer 714
Serie 4



LIEBHERR

PR714 Crawler Dozer Operation and Test

(Serial No. 139436 -)

TECHNICAL MANUAL PR714 Crawler Dozer Operation and Test (S.N. 139436—)

TM10268 17JUN10 (ENGLISH)

For complete service information also see:

PR714 Crawler Dozer Repair (S.N. 139436—)..	TM10269
PR714 Crawler Dozer Operator's Manual (S.N. 139436—).....	OMT227267
POWERTECH™ 4.5 L and 6.8 L Diesel Engines—Base Engine	CTM104
PowerTech E™ 4.5 L and 6.8 L Diesel Engines—Level 16 Electronic Fuel System with Denso HPCR	CTM502
Alternators and Starting Motors	CTM77
4000S Winches	CTM166
Super Caddy Oil Cleanup Procedure.....	CTM310
120 Series Hydraulic Cylinders	TM-H120A
Undercarriage Appraisal Manual	SP326
JDLink™ / ZXLink™ Machine Monitoring System.....	CTM10006

**Worldwide Construction
And Forestry Division**


LITHO IN U.S.A.

Introduction

Foreword

This manual is written for an experienced technician. Essential tools required in performing certain service work are identified in this manual and are recommended for use.

Live with safety: Read the safety messages in the introduction of this manual and the cautions presented throughout the text of the manual.

 This is the safety-alert symbol. When you see this symbol on the machine or in this manual, be alert to the potential for personal injury.

Technical manuals are divided in two parts: repair and operation and tests. Repair sections tell how to repair the components. Operation and tests sections help you identify the majority of routine failures quickly.

Information is organized in groups for the various components requiring service instruction. At the beginning of each group are summary listings of all applicable essential tools, service equipment and tools, other materials needed to do the job, service parts kits, specifications, wear tolerances, and torque values.

Technical Manuals are concise guides for specific machines. They are on-the-job guides containing only the vital information needed for diagnosis, analysis, testing, and repair.

Fundamental service information is available from other sources covering basic theory of operation, fundamentals of troubleshooting, general maintenance, and basic type of failures and their causes.

DX, TMIFC -19-29SEP98-1/1

Contents

Section 9000—General Information

Group 01—Safety

Section 9001—Diagnostic Trouble Codes (DTC)

Group 10—Standard Display Monitor (SDM) Diagnostic Trouble Codes

Group 20—Engine Control Unit (ECU) Diagnostic Trouble Codes

Group 30—Transmission Control Unit (TCU) Diagnostic Trouble Codes

Group 40—Electrohydraulic Controller (EHC) Diagnostic Trouble Codes

Group 50—Blade Control Joystick (BCJ) Diagnostic Trouble Codes

Section 9005—Operational Checkout Procedure

Group 10—Operational Checkout Procedure

Section 9010—Engine

Group 05—Theory Of Operation

Group 15—System Diagnostic Information

Group 25—Tests

Section 9015—Electrical System

Group 05—System Information

Group 10—System Diagrams

Group 15—Sub-System Diagnostics

Group 20—References

Section 9025—Hydraulic System

Group 05—Theory of Operation

Group 15—Diagnostic Information

Group 20—Adjustments

Group 25—Tests

Section 9026—Hydrostatic System

Group 05—Theory of Operation

Group 15—Diagnostic Information

Group 25—Test

Section 9031—Heating and Air Conditioning

Group 05—Theory of Operation

Group 15—Diagnostic Information

Group 25—Test

Original Instructions. All information, illustrations and specifications in this manual are based on the latest information available at the time of publication. The right is reserved to make changes at any time without notice.

COPYRIGHT © 2010
DEERE & COMPANY
Moline, Illinois
All rights reserved.
A John Deere ILLUSTRATION ® Manual
Previous Editions
Copyright © 2007, 2008, 2009

**Section 9000
General Information**

Contents

Page

Group 01—Safety9000-01-1

BUY NOW

**Then Instant Download
the Complete Manual
Thank you very much!**