

B110
B115

Repair
Manual

Repair Manual

Print No. 87643846
English - Printed in Italy

B110
B115

TO READER

This manual has been printed for a skilful engineer to supply necessary technical information to carry out service operations on this machine.

Read carefully this manual to collect correct information relevant to repair procedures.

For any question or remark, or in case of any error relevant the contents of this manual, please contact:

CNH ITALIA S.p.A.
 Technical Information
 Viale delle Nazioni, 55
 41100 MODENA - Italy

REFERENCES

Beyond this Service Manual, also refer to documents hereunder listed:

- Operator's Manual
- Parts Catalogue

COMPLETE HANDBOOK FOR INSTRUCTIONS AND REPAIRS

The complete Service Manual consists of two volumes:

- B110 - B115
Service Manual "LOADER BACKHOE"
- B110 - B115
Service Manual "Engine"

The Service Manuals for "Loader backhoe" and "Engine" contain the necessary technical information to carry out service and repair on machine and on engine, necessary tools to carry out those operations and information on service standard, on procedures for connection, disconnection, disassembly and assembly of parts.

The complete Service Manual which covers the loader backhoe models B110 - B115 consists of the following volumes, which can be identified through their print number as stated below:

| VOLUME | MACHINE TYPE | PRINT NUMBER |
|-----------------------------------|--------------|--------------|
| Service Manual - "Loader backhoe" | B110 - B115 | 87643846 |
| Service Manual - "Engine" | B110 - B115 | 87643867 |

LOADER BACKHOE MODELS

The complete range of Loader Backhoe models described in this manual are identified below:

| | B110 | B115 |
|--|-------------|-------------|
| Powershift | • | • |
| Powershuttle | • | / |
| Stabilizer sideshift | • | • |
| Stabilizer centre pivot | / | • |
| Cab | • | • |
| 4WD | • | • |
| 4WS | / | • |
| Pilot control | • | • |
| Mechanical control | • | • |
| Engine Iveco 82 kW - 110 HP model F4HE9484C*J102 | • | / |
| Engine Iveco 82 kW - 110 HP model F4HE9484C*J103 | / | • |
| Long dipper | • | • |

INDEX

SECTION 00 - SAFETY PRECAUTIONS

SECTION 01 - MAINTENANCE

SECTION 02 - TECHNICAL SPECIFICATIONS

| | |
|---|----|
| 1. MODELS..... | 3 |
| 2. IDENTIFICATION OF MAIN COMPONENTS..... | 4 |
| 3. TECHNICAL SPECIFICATIONS..... | 5 |
| 4. LOADER ATTACHMENT DIMENSIONS AND PERFORMANCE | 8 |
| 5. BACKHOE ATTACHMENT DIMENSIONS AND PERFORMANCE | 12 |
| 6. LIFTING CAPACITIES..... | 15 |
| 7. LOADER BUCKET WITH FORKS DIMENSIONS AND PERFORMANCE..... | 18 |
| 8. FLUID AND LUBRICANT CAPACITIES AND SPECIFICATIONS..... | 19 |

SECTION 17 - TORQUE CONVERTERS

| | |
|--|----|
| 1. POWERSHUTTLE TORQUE CONVERTER | 3 |
| 1.1 DESCRIPTION AND OPERATION..... | 3 |
| 1.2 TECHNICAL SPECIFICATIONS..... | 4 |
| 1.3 OVERHAUL | 4 |
| 1.4 INSPECTION | 4 |
| 1.5 DISASSEMBLY AND ASSEMBLY..... | 5 |
| 1.6 STALL TEST..... | 5 |
| 1.7 FAULT FINDING..... | 6 |
| 2. POWERSHIFT TORQUE CONVERTER | 7 |
| 2.1 DESCRIPTION AND OPERATION..... | 7 |
| 2.2 TECHNICAL SPECIFICATIONS..... | 8 |
| 2.3 OVERHAUL | 8 |
| 2.4 INSPECTION | 9 |
| 2.5 DISASSEMBLY AND ASSEMBLY..... | 9 |
| 2.6 STALL TEST..... | 11 |
| 2.7 FAULT FINDING..... | 12 |

SECTION 21 - TRANSMISSION

| | |
|--|----|
| 1. POWERSHUTTLE TRANSMISSION "TURNER MODEL COM-T4-2025" | 3 |
| 1.1 TECHNICAL SPECIFICATIONS..... | 3 |
| 1.2 TIGHTENING TORQUES | 5 |
| 1.3 TRANSMISSION CONTROLS..... | 6 |
| 1.4 LUBRICATION..... | 11 |
| 1.5 TRANSMISSION OIL FLOW AND SUPPLY..... | 12 |
| 1.6 TRANSMISSION HYDRAULIC VALVES AND PRESSURE TEST POINTS | 18 |
| 1.7 TRANSMISSION POWER FLOW..... | 19 |
| 1.8 TRANSMISSION 4WD COMPONENTS..... | 23 |
| 1.9 TRANSMISSION REMOVAL | 28 |
| 1.10 DISASSEMBLY AND ASSEMBLY..... | 29 |
| 1.11 FAULT FINDING..... | 87 |
| 1.12 SPECIAL TOOLS..... | 90 |

| | |
|---|-----|
| 2. POWERSHIFT TRANSMISSION "DANA T16000" | 91 |
| 2.1 TECHNICAL SPECIFICATIONS..... | 91 |
| 2.2 TRANSMISSION CONTROLS..... | 92 |
| 2.3 LUBRICATION..... | 102 |
| 2.4 PRESSURE SPECIFICATIONS AND CHECK POINTS..... | 103 |
| 2.5 TRANSMISSION COOLER..... | 105 |
| 2.6 TRANSMISSION HYDRAULIC DIAGRAM | 106 |
| 2.7 OPERATION..... | 107 |
| 2.8 POWER FLOWS..... | 114 |
| 2.9 GEAR AND CLUTCH LAY OUT | 129 |
| 2.10 TRANSMISSION REMOVAL AND INSTALLATION | 130 |
| 2.11 TRANSMISSION COMPONENTS..... | 134 |
| 2.12 DISASSEMBLY AND ASSEMBLY..... | 152 |
| 2.13 SPECIAL TOOLS..... | 261 |
| 2.14 FAULT FINDING..... | 262 |
| 2.15 FAULT FINDING..... | 264 |

SECTION 25 - FRONT AXLES

| | |
|-----------------------------------|-----|
| 1. FRONT AXLE 4WD "CARRARO" | 3 |
| 1.1 TECHNICAL SPECIFICATIONS..... | 3 |
| 1.2 DISASSEMBLY AND ASSEMBLY..... | 9 |
| 1.3 FAULT FINDING..... | 55 |
| 2. FRONT AXLE 4WS "CARRARO" | 58 |
| 2.1 TECHNICAL SPECIFICATIONS..... | 58 |
| 2.2 DISASSEMBLY AND ASSEMBLY..... | 62 |
| 2.3 FAULT FINDING..... | 115 |
| 3. SPECIAL TOOLS..... | 118 |

SECTION 27 - REAR AXLE

| | |
|------------------------------------|----|
| 1. REAR AXLE 2WS | 3 |
| 1.1 DESCRIPTION AND OPERATION..... | 3 |
| 1.2 TECHNICAL SPECIFICATIONS..... | 6 |
| 1.3 DISASSEMBLY AND ASSEMBLY..... | 8 |
| 1.4 FAULT FINDING..... | 27 |
| 2. REAR AXLE 4WS "CARRARO"..... | 28 |
| 2.1 TECHNICAL SPECIFICATIONS..... | 28 |
| 2.2 DISASSEMBLY AND ASSEMBLY..... | 32 |
| 2.3 FAULT FINDING..... | 81 |
| 3. SPECIAL TOOLS..... | 84 |

SECTION 33 - BRAKES SYSTEM

| | |
|----------------------------------|----|
| 1. TECHNICAL SPECIFICATIONS..... | 3 |
| 2. HAND BRAKE..... | 6 |
| 2.1 HAND BRAKE ADJUSTMENT..... | 7 |
| 3. BRAKE CYLINDERS | 8 |
| 4. OIL BRAKE TANK..... | 13 |
| 5. BLEEDING PROCEDURE..... | 13 |

SECTION 35 - HYDRAULIC SYSTEM

| | |
|--|-----|
| 1. HYDRAULIC DIAGRAMS | 3 |
| 1.1 HYDRAULIC DIAGRAM - 2WS SIDESHIFT MECHANICAL MODELS..... | 3 |
| 1.2 HYDRAULIC DIAGRAM - 2WS SIDESHIFT PILOT MODELS | 5 |
| 1.3 HYDRAULIC DIAGRAM - 2WS CENTRE PIVOT PILOT MODELS | 7 |
| 1.4 HYDRAULIC DIAGRAM - 4WS SIDESHIFT MECHANICAL MODELS..... | 9 |
| 1.5 HYDRAULIC DIAGRAM - 4WS SIDESHIFT PILOT MODELS | 11 |
| 1.6 HYDRAULIC DIAGRAM - 4WS CENTRE PIVOT PILOT MODELS | 13 |
| 2. HYDRAULIC PUMP | 15 |
| 2.1 DESCRIPTION AND OPERATION..... | 15 |
| 2.2 TECHNICAL SPECIFICATIONS..... | 15 |
| 2.3 LOAD SENSING VALVE | 17 |
| 2.4 REMOVAL | 19 |
| 2.5 COMPONENTS | 20 |
| 2.6 DISASSEMBLY AND ASSEMBLY..... | 21 |
| 3. CONTROL VALVES | 25 |
| 3.1 CONTROL VALVES "REXROTH" (MECHANICAL MODELS)..... | 25 |
| 3.2 CONTROL VALVES "REXROTH" (PILOT MODELS) | 41 |
| 3.3 SOLENOID VALVE FOR PILOTING THE BACKHOE CONTROL VALVE (WITH HYDRAULIC CONTROL)..... | 50 |
| 3.4 RELIEF VALVES | 53 |
| 3.5 ACCUMULATOR GLIDE RIDE "PARKER" | 61 |
| 4. HYDRAULIC SWING SYSTEM | 64 |
| 4.1 DESCRIPTION AND OPERATION..... | 64 |
| 4.2 HYDRAULIC OIL FLOW | 65 |
| 5. HYDRAULIC CYLINDERS..... | 67 |
| 5.1 LOADER CYLINDER..... | 68 |
| 5.2 LOADER BUCKET CYLINDER | 74 |
| 5.3 4X1 BUCKET CYLINDER..... | 80 |
| 5.4 BACKHOE BOOM CYLINDER..... | 83 |
| 5.5 BACKHOE DIPPER CYLINDER..... | 87 |
| 5.6 BACKHOE BUCKET CYLINDER..... | 91 |
| 5.7 SHORT AND LONG TELESCOPIC CYLINDER..... | 95 |
| 5.8 STABILIZER CYLINDER (CENTRE PIVOT MODELS)..... | 99 |
| 5.9 STABILIZER CYLINDER (SIDESHIFT MODELS)..... | 103 |
| 5.10 SWING CYLINDER..... | 107 |
| 5.11 BACKHOE SIDESHIFT LOCKING CYLINDER (SIDESHIFT)..... | 111 |
| 5.12 SPECIAL TOOLS..... | 113 |
| 6. HYDRAULIC CONTROL LEVERS | 114 |
| 6.1 TECHNICAL SPECIFICATIONS..... | 114 |
| 6.2 DESCRIPTION AND OPERATION..... | 115 |
| 6.3 DISASSEMBLY AND ASSEMBLY..... | 118 |
| 6.4 CONTROL LEVER VALVE | 121 |
| 7. FAULT FINDING AND FLOW TESTING | 124 |
| 7.1 PRELIMINARY CHECKS..... | 124 |
| 7.2 FAULT FINDING (WITH "REXROTH" CONTROL VALVES)..... | 125 |

SECTION 39 - CHASSIS

| | |
|--|----|
| 1. DESCRIPTION AND OPERATION..... | 3 |
| 2. REMOVAL AND INSTALLATION COMPONENTS..... | 6 |
| 2.1 COMPONENTS WITHIN THE CHASSIS..... | 6 |
| 2.2 COMPONENTS BELOW THE CHASSIS..... | 7 |
| 2.3 COMPONENTS ATTACHED OUTSIDE THE CHASSIS..... | 9 |
| 2.4 COMPONENTS ATTACHED ABOVE THE CHASSIS..... | 10 |
| 2.5 TIGHTENING TORQUES..... | 12 |

SECTION 41 - STEERING SYSTEM

| | |
|-----------------------------------|----|
| 1. STEERING SYSTEM 2WS..... | 4 |
| 2. STEERING SYSTEM 4WS..... | 7 |
| 3. POWER STEERING..... | 12 |
| 3.1 TECHNICAL SPECIFICATIONS..... | 13 |
| 3.2 COMPONENTS..... | 15 |
| 3.3 DISASSEMBLY AND ASSEMBLY..... | 16 |
| 3.4 SPECIAL TOOLS..... | 33 |
| 3.5 FAULT FINDING..... | 33 |

SECTION 50 - CAB HEATING AND AIR CONDITIONING

| | |
|---|----|
| 1. TECHNICAL SPECIFICATIONS..... | 3 |
| 2. CAB HEATING..... | 5 |
| 2.1 DESCRIPTION AND OPERATION..... | 5 |
| 3. AIR CONDITIONING..... | 12 |
| 3.1 PRINCIPALS OF AIR CONDITIONING..... | 12 |
| 3.2 SAFETY PRECAUTIONS..... | 16 |
| 3.3 DESCRIPTION AND OPERATION..... | 17 |
| 3.4 FAULT FINDING AND TESTING..... | 25 |
| 3.5 FLUSHING THE SYSTEM..... | 43 |
| 3.6 EVACUATING THE SYSTEM..... | 45 |
| 3.7 CHARGING THE SYSTEM..... | 46 |
| 3.8 COMPONENTS OVERHAUL..... | 47 |
| 3.9 COMPRESSOR..... | 52 |
| 3.10 SPECIAL TOOLS..... | 66 |

SECTION 55 - ELECTRICAL SYSTEM

| | |
|---|----|
| 1. GENERALITIES..... | 3 |
| 1.1 TEMPORARY WIRING HARNESS REPAIR..... | 3 |
| 1.2 FAULT FINDING..... | 4 |
| 2. ELECTRICAL DIAGRAMS..... | 5 |
| 2.1 ELECTRICAL DIAGRAMS - POWERSHUTTLE CAB..... | 5 |
| 2.2 ELECTRICAL DIAGRAMS - POWERSHIFT CAB..... | 22 |
| 2.3 ELECTRICAL DIAGRAMS - 4WS..... | 39 |
| 3. CONTROLS AND INSTRUMENTS..... | 57 |
| 3.1 FRONT INSTRUMENT PANEL..... | 57 |
| 3.2 CALIBRATION OF SPEEDOMETER..... | 59 |
| 3.3 SIDE INSTRUMENT PANEL..... | 60 |
| 3.4 IMMOBILISER CIRCUIT..... | 64 |

| | |
|---|-----|
| 4. DIAGNOSTICS DISPLAY | 65 |
| 4.1 SYMBOL | 66 |
| 4.2 SETUP MENU | 67 |
| 4.3 SETUP MENU | 68 |
| 4.4 PROCEDURE ABOUT SELF TEST | 69 |
| 4.5 ON BOARD ERROR CODE RETRIEVAL | 70 |
| 4.6 BACKLIGHTING AND DIMMING..... | 71 |
| 4.7 WORK HOURS..... | 72 |
| 4.8 FUNCTIONAL DESCRIPTION | 73 |
| 4.9 MAINTENANCE..... | 79 |
| 4.10 WARNING MESSAGES | 80 |
| 5. STARTING SYSTEM | 86 |
| 5.1 DESCRIPTION AND OPERATION..... | 86 |
| 5.2 FAULT FINDING..... | 87 |
| 5.3 STARTER MOTOR..... | 90 |
| 6. ALTERNATOR..... | 96 |
| 6.1 TECHNICAL SPECIFICATIONS..... | 96 |
| 6.2 DESCRIPTION AND OPERATION..... | 96 |
| 6.3 COMPONENTS | 98 |
| 6.4 REMOVAL | 99 |
| 6.5 PRELIMINARY CHECK AND TESTS..... | 100 |
| 6.6 FAULT FINDING..... | 109 |
| 7. BATTERY | 110 |
| 7.1 TECHNICAL SPECIFICATIONS..... | 110 |
| 7.2 DESCRIPTION AND OPERATION..... | 110 |
| 7.3 BATTERY REPLACEMENT | 111 |
| 7.4 MAINTENANCE..... | 113 |
| 7.5 TESTS | 115 |
| 7.6 CONNECTING A BOOSTER BATTERY | 117 |
| 7.7 BATTERY MASTER SWITCH..... | 117 |
| 8. COMPONENT TESTING | 118 |
| 8.1 GENERAL INTRODUCTION | 118 |
| 8.2 COMPONENT TESTING | 119 |
| 8.3 GROUND POINTS..... | 119 |
| 8.4 KEY-START AND STOP SWITCH | 121 |
| 8.5 ALTERNATOR..... | 122 |
| 8.6 TRANSMISSIONS | 122 |
| 8.7 PARKING BRAKE SWITCH | 126 |
| 8.8 CAB | 127 |
| 8.9 4WD SWITCH..... | 132 |
| 8.10 BRAKE PEDAL SWITCHES | 132 |
| 8.11 BRAKE OIL LEVEL SWITCH..... | 133 |
| 8.12 FRONT WORK LAMP SWITCH (1) - REAR WORK LAMP SWITCH (2) MAIN LIGHT SWITCH ... | 133 |
| 8.13 HAZARD SWITCH..... | 134 |
| 8.14 FLASHER MODULE..... | 134 |
| 8.15 MULTI FUNCTION SWITCH | 135 |
| 8.16 FRONT WIPER MOTOR (1) - REAR WIPER MOTOR - (2)..... | 135 |
| 8.17 4WS -STEERING SELECTOR SWITCH..... | 136 |
| 8.18 STEERING CONTROL UNIT..... | 137 |
| 8.19 4WS REAR AXLE STEERING SENSOR | 139 |
| 8.20 4WS FRONT AXLE STEERING SENSOR..... | 139 |
| 8.21 STEERING SOLENOIDS..... | 140 |

| | |
|---|-----|
| 8.22 DIFFERENTIAL LOCK SWITCH (1) | 141 |
| 8.23 LOADER | 142 |
| 8.24 BACKHOE..... | 144 |
| 8.25 REVERSING BUZZER..... | 149 |
| 8.26 FUEL LEVEL SENDER..... | 149 |

SECTION 82 - LOADER

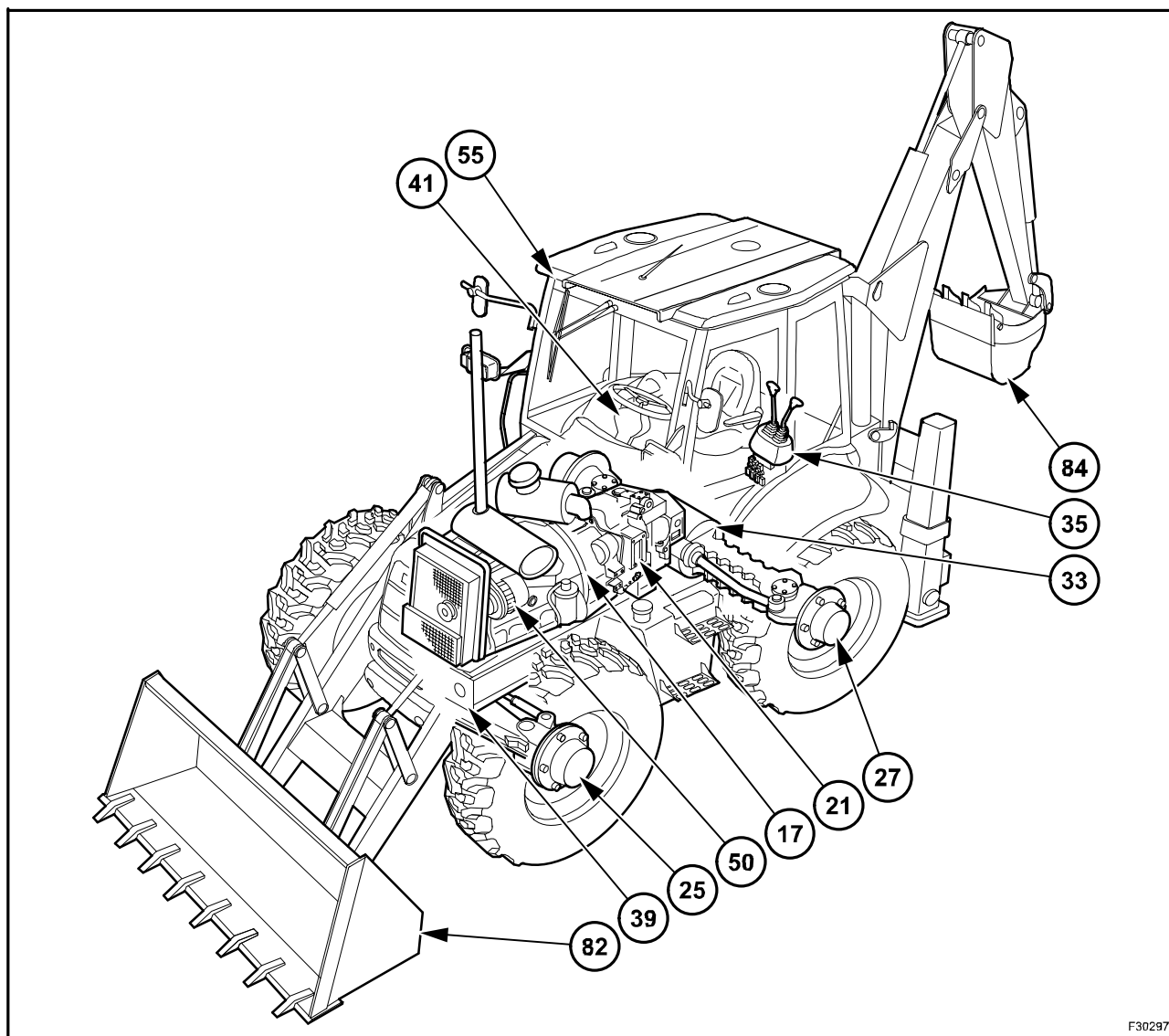
| | |
|---|----|
| 1. LOADER ATTACHMENT CONTROLS | 4 |
| 2. LOADER BUCKET SELF LEVELING | 7 |
| 3. LOADER ATTACHMENT SAFETY STRUT | 10 |
| 4. LOADER BUCKET REMOVAL | 12 |
| 5. LOADER REMOVAL (2WS)..... | 15 |
| 6. LOADER REMOVAL (4WS)..... | 17 |

SECTION 84 - BACKHOE

| | |
|--|----|
| 1. DESCRIPTION AND OPERATION | 3 |
| 2. BACKHOE ATTACHMENT MECHANICAL CONTROL VERSION | 6 |
| 3. BACKHOE ATTACHMENT HYDRAULIC CONTROLS VERSION | 14 |
| 4. REMOVAL AND INSTALLATION | 16 |
| 5. TELESCOPIC DIPPER REVISION..... | 26 |

SECTIONS INDEX

Where disassembly of a specific component is required refer to the relevant repair manual section.



F30297

SECTION 17: TORQUE CONVERTERS

SECTION 21: TRANSMISSION

SECTION 25: FRONT AXLE

SECTION 27: REAR AXLE

SECTION 33: BRAKES SYSTEM

SECTION 35: HYDRAULIC SYSTEM

SECTION 39: CHASSIS

SECTION 41: STEERING SYSTEM

SECTION 50: CAB HEATING AND AIR CONDITIONING

SECTION 55: ELECTRICAL SYSTEM

SECTION 82: LOADER

SECTION 84: BACKHOE

BUY NOW

**Then Instant Download
the Complete Manual
Thank you very much!**