

# PARTS CATALOG

**Product Line**

**CATALOGO PARTI  
DI RICAMBIO**

**Model MH2.6**

**CATALOGUE DES PIECES  
DETACHEES**

**ERSATZTEILKATALOG**

**CATÁLOGO DES PIEZAS  
DE REPUESTO**

**CATÁLOGO DE PEÇAS  
SOBRESSALENTES**

**ONDERDELENLIJST**

**RESERVEDELSKATALOG**

**CATALOGUE n. 604.04.284.00**  
1<sup>st</sup> Edition 12 - 2006

 **NEW HOLLAND**

---

# TABLE OF CONTENTS

---

|             |    |                                    |
|-------------|----|------------------------------------|
| 0 - FILTERS | 00 | MAINTENANCE PARTS                  |
| 0 - VERSION | 00 | IDENTIFICATION AND VERSION LIST    |
| 0.000       | 01 | ENGINE SUSPENSIONS                 |
| 0.001       | 01 | AIR CLEANER                        |
| 0.001       | 02 | AIR CLEANER                        |
| 0.002       | 01 | MUFFLER                            |
| 0.003       | 01 | RADIATOR                           |
| 0.003       | 02 | RADIATOR                           |
| 0.003       | 03 | RADIATOR - COMPONENTS              |
| 0.004       | 01 | ACCELERATOR CONTROLS               |
| 0.021       | 01 | ENGINE                             |
| 0.040       | 01 | CRANKCASE                          |
| 0.040       | 02 | CRANKCASE                          |
| 0.040       | 03 | CRANKCASE                          |
| 0.042       | 01 | ENGINE OIL SUMP                    |
| 0.042       | 02 | ENGINE OIL SUMP                    |
| 0.043       | 01 | CRANKCASE COVERS                   |
| 0.043       | 02 | CRANKCASE COVERS                   |
| 0.043       | 03 | CRANKCASE COVERS                   |
| 0.045       | 01 | BREATHER - ENGINE                  |
| 0.060       | 01 | CYLINDER HEAD                      |
| 0.063       | 01 | CYLINDER HEAD COVERS               |
| 0.066       | 01 | ROCKER SHAFT                       |
| 0.071       | 01 | INTAKE MANIFOLD                    |
| 0.077       | 01 | EXHAUST MANIFOLD                   |
| 0.080       | 01 | CRANKSHAFT                         |
| 0.081       | 01 | CONNECTING ROD                     |
| 0.082       | 01 | PISTON - ENGINE                    |
| 0.083       | 01 | FLYWHEEL - ENGINE                  |
| 0.084       | 01 | PULLEY - CRANKSHAFT                |
| 0.120       | 01 | CAMSHAFT - TIMING CONTROL          |
| 0.140       | 01 | INJECTION PUMP                     |
| 0.140       | 02 | INJECTION EQUIPMENT - INJECTOR     |
| 0.142       | 01 | INJECTION PUMP - CONTROL           |
| 0.149       | 01 | INJECTION EQUIPMENT - PIPING       |
| 0.200       | 01 | FUEL FILTER                        |
| 0.201       | 01 | FUEL PUMP                          |
| 0.203       | 01 | PIPING - FUEL                      |
| 0.204       | 01 | INJECTION EQUIPMENT - PIPING       |
| 0.240       | 01 | TURBOCHARGER -                     |
| 0.270       | 01 | ENGINE OIL DIPSTICK                |
| 0.300       | 01 | OIL PUMP - ENGINE                  |
| 0.302       | 01 | OIL FILTERS - ENGINE               |
| 0.302       | 02 | OIL FILTERS - ENGINE               |
| 0.305       | 01 | PIPING - ENGINE OIL                |
| 0.315       | 01 | HEAT EXCHANGER - ENGINE            |
| 0.320       | 01 | WATER PUMP                         |
| 0.323       | 01 | PIPING - ENGINE COOLING SYSTEM     |
| 0.326       | 01 | THERMOSTAT - ENGINE COOLING SYSTEM |
| 0.340       | 01 | WATER PUMP - CONTROL               |
| 0.345       | 01 | FAN DRIVE                          |
| 0.347       | 01 | FAN - ENGINE                       |
| 0.347       | 02 | VENTURI TUBE                       |
| 0.350       | 01 | POWER TAKE OFF                     |
| 0.360       | 01 | STARTER MOTOR                      |

---

# TABLE OF CONTENTS

---

|       |    |                                          |
|-------|----|------------------------------------------|
| 0.400 | 01 | ALTERNATOR                               |
| 0.400 | 02 | ALTERNATOR (4892318)                     |
| 0.450 | 01 | HOOKS - ENGINE                           |
| 1.000 | 01 | UPPER FRAME                              |
| 1.000 | 02 | UPPER FRAME                              |
| 1.010 | 01 | FUEL TANK                                |
| 1.010 | 02 | FUEL TANK                                |
| 1.010 | 03 | FUEL TANK                                |
| 1.020 | 01 | OIL TANK                                 |
| 1.020 | 02 | OIL TANK                                 |
| 1.020 | 03 | OIL TANK                                 |
| 1.030 | 01 | HYDRAULIC PUMP                           |
| 1.030 | 02 | FLEXIBLE JOINT                           |
| 1.030 | 03 | HYDRAULIC PUMP - COMPONENTS              |
| 1.030 | 04 | HYDRAULIC PUMP - COMPONENTS              |
| 1.030 | 05 | HYDRAULIC PUMP - COMPONENTS              |
| 1.030 | 06 | HYDRAULIC PUMP - COMPONENTS              |
| 1.030 | 07 | HYDRAULIC PUMP - COMPONENTS              |
| 1.035 | 01 | TOOL BENDING                             |
| 1.035 | 02 | ANGLE CYLINDER                           |
| 1.035 | 03 | ANGLE CYLINDER - COMPONENTS              |
| 1.035 | 04 | TOOL BENDING                             |
| 1.040 | 01 | SWING REDUCTION UNIT                     |
| 1.040 | 02 | SWING REDUCTION UNIT                     |
| 1.040 | 03 | SWING REDUCTION UNIT                     |
| 1.040 | 04 | SWING HYDRAULIC MOTOR                    |
| 1.040 | 05 | SWING HYDRAULIC MOTOR                    |
| 1.040 | 06 | SWING HYDRAULIC MOTOR                    |
| 1.050 | 01 | HYDRAULIC CONTROL VALVE                  |
| 1.050 | 02 | HYDRAULIC CONTROL VALVE                  |
| 1.050 | 03 | HYDRAULIC CONTROL VALVE                  |
| 1.050 | 04 | HYDRAULIC CONTROL VALVE - COMPONENTS     |
| 1.050 | 05 | HYDRAULIC CONTROL VALVE - COMPONENTS     |
| 1.050 | 06 | HYDRAULIC CONTROL VALVE - COMPONENTS     |
| 1.050 | 07 | HYDRAULIC CONTROL VALVE - COMPONENTS     |
| 1.050 | 08 | HYDRAULIC CONTROL VALVE - COMPONENTS     |
| 1.050 | 09 | HYDRAULIC CONTROL VALVE - COMPONENTS     |
| 1.050 | 10 | HYDRAULIC CONTROL VALVE - COMPONENTS     |
| 1.050 | 11 | HYDRAULIC CONTROL VALVE - COMPONENTS     |
| 1.050 | 12 | HYDRAULIC CONTROL VALVE - COMPONENTS     |
| 1.050 | 13 | HYDRAULIC CONTROL VALVE - COMPONENTS     |
| 1.050 | 14 | PUMP/CONTROL VALVE PIPING                |
| 1.050 | 15 | PUMP/CONTROL VALVE PIPING                |
| 1.050 | 16 | PUMP/CONTROL VALVE PIPING                |
| 1.050 | 17 | VALVE                                    |
| 1.059 | 01 | PIPING, TRAVEL                           |
| 1.061 | 01 | MAIN PIPING                              |
| 1.061 | 02 | MAIN PIPING                              |
| 1.061 | 03 | MAIN PIPING                              |
| 1.061 | 04 | MAIN PIPING                              |
| 1.070 | 01 | CONTROLS                                 |
| 1.070 | 02 | PILOT VALVE - COMPONENTS                 |
| 1.072 | 01 | PEDAL - TRAVEL                           |
| 1.073 | 01 | SWING UNIT, POSITIONING AND HAMMER PEDAL |
| 1.075 | 01 | SWING LOCK                               |

---

# TABLE OF CONTENTS

---

|       |     |                                                |
|-------|-----|------------------------------------------------|
| 1.080 | 01  | PILOT PIPING                                   |
| 1.080 | 02  | PILOT PIPING                                   |
| 1.080 | 03  | PILOT PIPING                                   |
| 1.080 | 04  | SOLENOID VALVE FOR POWER CONTROLS              |
| 1.080 | 05  | DRAINAGES BLOCK                                |
| 1.080 | 06  | PRESSURE GAUGES BLOCK                          |
| 1.080 | 07  | SLEWING SOLENOID                               |
| 1.080 | 08  | SLEWING VALVE                                  |
| 1.080 | 09  | USERS SOLENOID                                 |
| 1.080 | 10  | CLAMSHELL BUCKET VALVE                         |
| 1.080 | 11  | SOLENOID VALVE FOR POWER CONTROLS - COMPONENTS |
| 1.080 | 12  | SLEWING VALVE - COMPONENTS                     |
| 1.080 | 13  | USERS SOLENOID - COMPONENTS                    |
| 1.087 | 01  | PILOT PIPING (8)                               |
| 1.088 | 01  | PILOT PIPING (9)                               |
| 1.100 | 01  | STEERING DEVICE                                |
| 1.100 | 02  | STEERING DEVICE                                |
| 1.100 | 03  | STEERING DEVICE                                |
| 1.100 | 04  | STEERING DEVICE                                |
| 1.101 | 01  | GEAR PUMP                                      |
| 1.101 | 02  | GEAR PUMP                                      |
| 1.110 | 01  | STEERING PIPING                                |
| 1.110 | 01A | STEERING PIPING                                |
| 1.150 | 01  | BRAKE LINES                                    |
| 1.150 | 02  | BRAKE LINES                                    |
| 1.150 | 03  | OIL FILTER                                     |
| 1.150 | 04  | BRAKE PEDAL - COMPONENTS                       |
| 1.200 | 01  | DASHBOARD                                      |
| 1.200 | 02  | DASHBOARD                                      |
| 1.200 | 03  | DASHBOARD                                      |
| 1.200 | 04  | DASHBOARD                                      |
| 1.200 | 05  | DASHBOARD                                      |
| 1.220 | 01  | ELECTRIC SYSTEM                                |
| 1.220 | 02  | ELECTRIC SYSTEM                                |
| 1.220 | 03  | ELECTRIC SYSTEM                                |
| 1.220 | 04  | ELECTRIC SYSTEM                                |
| 1.220 | 05  | ELECTRIC SYSTEM                                |
| 1.220 | 06  | ELECTRIC SYSTEM                                |
| 1.220 | 07  | ELECTRIC SYSTEM                                |
| 1.220 | 08  | ELECTRIC SYSTEM                                |
| 1.220 | 09  | ELECTRIC SYSTEM                                |
| 1.220 | 10  | ELECTRIC SYSTEM                                |
| 1.250 | 01  | CAB                                            |
| 1.250 | 02  | CAB                                            |
| 1.250 | 03  | CAB - COMPONENTS                               |
| 1.250 | 04  | CAB - COMPONENTS                               |
| 1.250 | 05  | CAB - COMPONENTS                               |
| 1.250 | 06  | CAB - COMPONENTS                               |
| 1.250 | 07  | CAB - COMPONENTS                               |
| 1.250 | 08  | CAB - COMPONENTS                               |
| 1.250 | 09  | CAB - COMPONENTS                               |
| 1.250 | 10  | CAB - COMPONENTS                               |
| 1.250 | 11  | CAB - COMPONENTS                               |
| 1.250 | 12  | CAB - COMPONENTS                               |
| 1.250 | 13  | CAB - COMPONENTS                               |

---

# TABLE OF CONTENTS

---

|       |     |                                         |
|-------|-----|-----------------------------------------|
| 1.250 | 14  | CAB                                     |
| 1.270 | 01  | FLOOR-CAB                               |
| 1.270 | 02  | FLOOR-CAB                               |
| 1.280 | 01  | CAR RADIO ARRANGEMENT                   |
| 1.290 | 01  | HEATING, LINES                          |
| 1.295 | 01  | AIR CONDITIONING                        |
| 1.295 | 02  | AIR CONDITIONING - COMPONENTS           |
| 1.300 | 01  | HOODS                                   |
| 1.300 | 02  | HOODS                                   |
| 1.300 | 03  | HOODS                                   |
| 1.300 | 04  | HOODS                                   |
| 1.300 | 05  | HOODS                                   |
| 1.300 | 06  | HOODS                                   |
| 1.300 | 07  | HOODS                                   |
| 1.300 | 08  | HOODS                                   |
| 1.300 | 09  | HOODS                                   |
| 1.300 | 10  | HOODS                                   |
| 1.300 | 11  | HOODS                                   |
| 2.002 | 01  | POSITIONER ARM                          |
| 2.005 | 01  | ARM 1 AND 2                             |
| 2.031 | 01  | BOOM PIPING                             |
| 2.031 | 02  | BOOM PIPING                             |
| 2.031 | 03  | BOOM PIPING                             |
| 2.031 | 04  | LIFT CYLINDER                           |
| 2.031 | 05  | LIFT CYLINDER                           |
| 2.031 | 06  | POSITIONER CYLINDER                     |
| 2.031 | 07  | DIPPER STICK CYLINDER                   |
| 2.031 | 08  | BUCKET CYLINDER                         |
| 2.031 | 09  | LIFT CYLINDER - COMPONENTS              |
| 2.031 | 10  | POSITIONER CYLINDER - COMPONENTS        |
| 2.031 | 11  | DIPPER STICK CYLINDER - COMPONENTS      |
| 2.031 | 12  | BUCKET CYLINDER - COMPONENTS            |
| 2.031 | 12A | BUCKET CYLINDER - COMPONENTS            |
| 2.031 | 13  | LIFTING ANTIDROP VALVE                  |
| 2.031 | 14  | DIGGING ANTIDROP VALVE                  |
| 3.000 | 01  | LOWER FRAME                             |
| 3.000 | 01A | LOWER FRAME                             |
| 3.000 | 02  | LOWER FRAME                             |
| 3.000 | 03  | LOWER FRAME                             |
| 3.000 | 04  | LOWER FRAME                             |
| 3.000 | 04A | LOWER FRAME                             |
| 3.000 | 05  | LOWER FRAME                             |
| 3.000 | 06  | LOWER FRAME                             |
| 3.060 | 01  | ROTARY DISTRIBUTOR                      |
| 3.060 | 02  | ROTARY DISTRIBUTOR                      |
| 3.100 | 01  | POWER TRAIN                             |
| 3.110 | 01  | FRONT AXLE - BOX AND COVERS             |
| 3.110 | 02  | FRONT AXLE - DIFFERENTIAL               |
| 3.110 | 03  | FRONT AXLE - PLANETARY REDUCTION UNITS  |
| 3.110 | 04  | FRONT AXLE - DISC BRAKE                 |
| 3.110 | 05  | FRONT AXLE - BARS AND STEERING CYLINDER |
| 3.110 | 06  | FRONT AXLE - SWING SUPPORTS             |
| 3.140 | 01  | TRAVEL MOTOR - COMPONENTS               |
| 3.140 | 02  | TRAVEL MOTOR - COMPONENTS               |
| 3.140 | 03  | TRAVEL MOTOR - COMPONENTS               |

---

## TABLE OF CONTENTS

---

|        |     |                                                               |
|--------|-----|---------------------------------------------------------------|
| 3.140  | 04  | TRAVEL MOTOR - COMPONENTS                                     |
| 3.140  | 05  | TRAVEL MOTOR - COMPONENTS                                     |
| 3.300  | 01  | BRAKE LINES                                                   |
| 3.400  | 01  | PIPING, TRAVEL                                                |
| 3.400  | 02  | PIPING, TRAVEL                                                |
| 3.400  | 03  | UNDERCARRIAGE SOLENOID                                        |
| 3.404  | 01  | AXLE LOCK PIPING                                              |
| 3.404  | 02  | AXLE LOCK CYLINDER                                            |
| 3.404  | 03  | AXLES LOCK VALVE                                              |
| 3.500  | 01  | DOZER BLADE - STABILIZERS PIPING                              |
| 3.500  | 02  | CYLINDER, BLADE                                               |
| 3.500  | 03  | CYLINDER, BLADE - COMPONENTS                                  |
| 4.200  | 01  | TOOLS KIT                                                     |
| 4.521  | 01  | DECALS                                                        |
| 4.521  | 02  | DECALS                                                        |
| 5.0006 | 01  | COUPLES WHEELS 8.25-20 - OPTIONAL CODE 72116796               |
| 5.0006 | 02  | COUPLES WHEELS 8.25-20 - OPTIONAL CODE 72116796               |
| 5.0007 | 01  | SINGLE WHEEL - OPTIONAL CODE 72116997                         |
| 5.0013 | 01  | DIPPER STICK (L=1850 MM) - OPTIONAL CODE 72116762             |
| 5.0013 | 02  | DIPPER STICK (L=1850 MM) - OPTIONAL CODE 72116762             |
| 5.0020 | 01  | HAMMER - CALIPER HYDRAULIC SYSTEM - OPTIONAL CODE 72110922    |
| 5.0020 | 02  | HAMMER - CALIPER HYDRAULIC SYSTEM - OPTIONAL CODE 72110922    |
| 5.0020 | 03  | HAMMER - CALIPER HYDRAULIC SYSTEM - OPTIONAL CODE 72110922    |
| 5.0025 | 01  | COLD START - OPTIONAL CODE 72117768                           |
| 5.0026 | 01  | GERMANY HOMOLOGATION - OPTIONAL CODE 72117894                 |
| 5.0028 | 01  | WORKING LIGHTS - OPTIONAL CODE 72130342                       |
| 5.0032 | 01  | DECAL - BIODEGRADABLE OIL - OPTIONAL CODE 72117825            |
| 5.0054 | 01  | REAR AND FRONT STABILIZERS - OPTIONAL CODE 72111290           |
| 5.0054 | 02  | REAR AND FRONT STABILIZERS - OPTIONAL CODE 72111290           |
| 5.0054 | 03  | REAR AND FRONT STABILIZERS - OPTIONAL CODE 72111290           |
| 5.0054 | 04  | REAR AND FRONT STABILIZERS - OPTIONAL CODE 72111290           |
| 5.0056 | 01  | REAR STABILIZER - OPTIONAL CODE 72108625                      |
| 5.0058 | 01  | BUCKET LOCK - OPTIONAL CODE 72117043                          |
| 5.0090 | 01  | TOOL BOX L.H. - OPTIONAL CODE 72117016                        |
| 5.0090 | 01A | TOOL BOX L.H. - OPTIONAL CODE 72118100                        |
| 5.0090 | 02  | TOOL BOX L.H. - OPTIONAL CODE 72117016                        |
| 5.0090 | 02A | TOOL BOX L.H. - OPTIONAL CODE 72118100                        |
| 5.0091 | 01  | LADDER L.H. - OPTIONAL CODE 72117014                          |
| 5.0106 | 01  | BUCKET - (L=800MM) - OPTIONAL CODE 72107705                   |
| 5.0107 | 01  | BUCKET (L=700 MM) - OPTIONAL CODE 72107702                    |
| 5.0139 | 01  | BUCKET - (L=600MM) - OPTIONAL CODE 72107699                   |
| 5.0144 | 01  | LINK ROD - OPTIONAL CODE 72112818                             |
| 5.0151 | 01  | HEATED SEAT AT MECHANICAL SUSPENSION - OPTIONAL CODE 72116761 |
| 5.0151 | 02  | HEATED SEAT AT MECHANICAL SUSPENSION - OPTIONAL CODE 72116761 |
| 5.0160 | 01  | FUEL TRANSFER PUMP - OPTIONAL CODE 72103957                   |
| 5.0208 | 01  | CAB GUARD - OPTIONAL CODE 72116794                            |
| 5.0209 | 01  | CAB GUARD - OPTIONAL CODE 72116795                            |
| 5.0300 | 01  | REAR BLADE - OPTIONAL CODE 72108687                           |
| 5.0304 | 01  | FRONT BLADE/ REAR STABILIZERS - OPTIONAL CODE 72111289        |
| 5.0304 | 02  | FRONT BLADE/ REAR STABILIZERS - OPTIONAL CODE 72111289        |
| 5.0304 | 03  | FRONT BLADE/ REAR STABILIZERS - OPTIONAL CODE 72111289        |
| 5.0304 | 04  | FRONT BLADE/ REAR STABILIZERS - OPTIONAL CODE 72111289        |
| 5.0321 | 01  | RADIO - OPTIONAL CODE 72117889                                |
| 5.0530 | 01  | DIPPER STICK (L=2200 MM) OPTIONAL CODE 72116763               |
| 5.0530 | 02  | DIPPER STICK (L=2200 MM)- OPTIONAL CODE 72116763              |

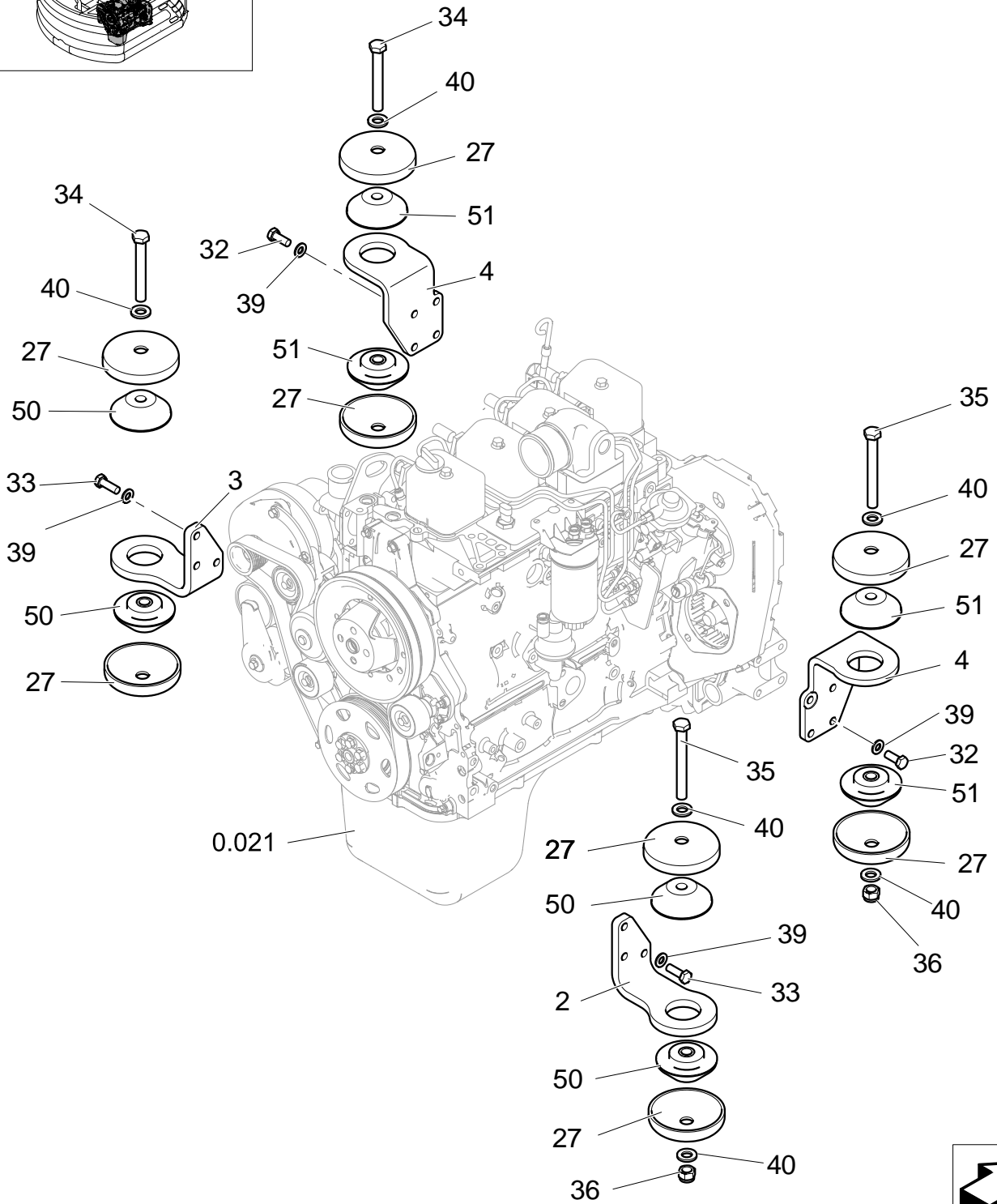
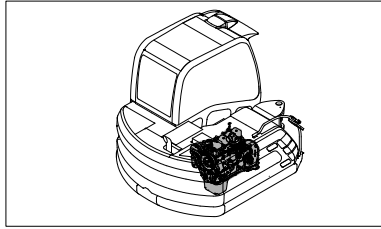
---

## TABLE OF CONTENTS

---

|        |    |                                                                 |
|--------|----|-----------------------------------------------------------------|
| 5.0604 | 01 | AIR CONDITIONING - OPTIONAL CODE 72104243                       |
| 5.0749 | 01 | ROTARY LAMP - OPTIONAL CODE 72117482                            |
| 5.0750 | 01 | PLATE LIGHT - OPTIONAL CODE 72112095                            |
| 5.0751 | 01 | ITALIAN ROAD TRAFFIC APPROVAL - OPTIONAL CODE 72117529          |
| 5.1007 | 01 | 2 STEERING WHEELS - OPTIONAL CODE 72117997                      |
| 5.1007 | 02 | 2 STEERING WHEELS - OPTIONAL CODE 72117997                      |
| 5.1007 | 03 | 2 STEERING WHEELS - OPTIONAL CODE 72117997                      |
| 5.1008 | 01 | 4 STERRING WHEELS - OPTIONAL CODE 72117851                      |
| 5.1008 | 02 | 4 STERRING WHEELS - OPTIONAL CODE 72117851                      |
| 5.1008 | 03 | 4 STEERING WHEELS - OPTIONAL CODE 72117851                      |
| 5.1008 | 04 | 4 STEERING WHEELS - OPTIONAL CODE 72117851                      |
| 5.1008 | 05 | REAR AXLE - BOX AND COVERS - OPTIONAL CODE 72117851             |
| 5.1008 | 06 | REAR AXLE - DIFFERENTIAL - OPTIONAL CODE 72117851               |
| 5.1008 | 07 | REAR AXLE - PLANETARY REDUCTION UNITS - OPTIONAL CODE 72117851  |
| 5.1008 | 08 | REAR AXLE - DISC BRAKE - OPTIONAL CODE 72117851                 |
| 5.1008 | 09 | REAR AXLE - REDUCTION GEAR - OPTIONAL CODE 72117851             |
| 5.1008 | 10 | REAR AXLE - GEARS - OPTIONAL CODE 72117851                      |
| 5.1008 | 11 | REAR AXLE - STEERING RODS AND CYLINDER - OPTIONAL CODE 72117851 |
| 5.9121 | 01 | BUCKET - (L=350 MM) - OPTIONAL CODE 72107693                    |
| 5.9122 | 01 | BUCKET - (L=450 MM) - OPTIONAL CODE 72107696                    |

ENGINE SUSPENSIONS  
SOSPENSIONI MOTORE  
SUSPENSIONS DU MOTEUR  
MOTORAUFGAENGUNG





**0.000**

01

p1

06/06

**ANCLAJES MOTOR**

| R  | N | P.N.       | MOD | Q  | Description<br>Denominacion                      | Descrizione<br>Denominação    | Description<br>Beschrijving | Bezeichnung<br>Beskrivelse   | L.C. |
|----|---|------------|-----|----|--------------------------------------------------|-------------------------------|-----------------------------|------------------------------|------|
| 2  |   | 72109204   |     | 1  | SUPPORT, - FRONT LEFT<br>SOPORTE                 | SUPPORTO<br>SUPORTE           | SUPPORT<br>STEUN            | HALTERUNG, LAGERBO<br>BESLAG | 300S |
| 3  |   | 72110938   |     | 1  | SUPPORT, - RIGHT<br>SOPORTE                      | SUPPORTO<br>SUPORTE           | SUPPORT<br>STEUN            | HALTERUNG, LAGERBO<br>BESLAG | 300S |
| 4  |   | 72110945   |     | 2  | SUPPORT<br>SOPORTE                               | SUPPORTO<br>SUPORTE           | SUPPORT<br>STEUN            | HALTERUNG, LAGERBO<br>BESLAG | 300S |
| 27 |   | 72116470   |     | 8  | COVER<br>TAPADERA                                | COPERCHIO<br>COBERTA          | COUVERCLE<br>DEKSEL         | ABDECKUNG<br>DÆKSEL          | 265C |
| 32 |   | 11112434   |     | 8  | SCREW, Hex, M12 x 30, 10.9, Full Thd<br>TORNILLO | VITE<br>PARAFUSO              | VIS<br>SCHROEF              | SCHRAUBE<br>SKRUE            | 040V |
| 33 |   | 11112634   |     | 6  | SCREW, 12X1,75X35<br>TORNILLO                    | VITE<br>PARAFUSO              | VIS<br>SCHROEF              | SCHRAUBE<br>SKRUE            | 040V |
| 34 |   | {11120334} |     | 2  | 16X120                                           |                               |                             |                              |      |
| 35 |   | 11120734   |     | 2  | SCREW, 16X140<br>TORNILLO                        | VITE<br>PARAFUSO              | VIS<br>SCHROEF              | SCHRAUBE<br>SKRUE            | 040V |
| 36 |   | 12577421   |     | 2  | NUT, 16X2<br>TUERCA                              | DADO<br>PORCA                 | ECROU<br>MOER               | MUTTER<br>MOETRIK            | 010D |
| 39 |   | 14496731   |     | 14 | WASHER, 12X24<br>ARANDELA                        | ROSETTA PIANA<br>ANILHA       | RONDELLE<br>SLUITRING       | UNTERLEGSCHIEBE<br>FLADSKIVE | 131R |
| 40 |   | 71405003   |     | 6  | WASHER, 17<br>ARANDELA                           | ROSETTA PIANA<br>ANILHA       | RONDELLE<br>SLUITRING       | UNTERLEGSCHIEBE<br>FLADSKIVE | 131R |
| 50 |   | 72111572   |     | 4  | SHOCK ABSORBER<br>AMORTIGUADOR                   | AMMORTIZZATORE<br>AMORTECEDOR | AMORTISSEUR<br>SCHOKDEMPEM  | DÄMPFER<br>STOEDDAEMPER      | 036A |
| 51 |   | 72111573   |     | 4  | SHOCK ABSORBER<br>AMORTIGUADOR                   | AMMORTIZZATORE<br>AMORTECEDOR | AMORTISSEUR<br>SCHOKDEMPEM  | DÄMPFER<br>STOEDDAEMPER      | 036A |

**MH2.6**

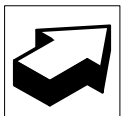
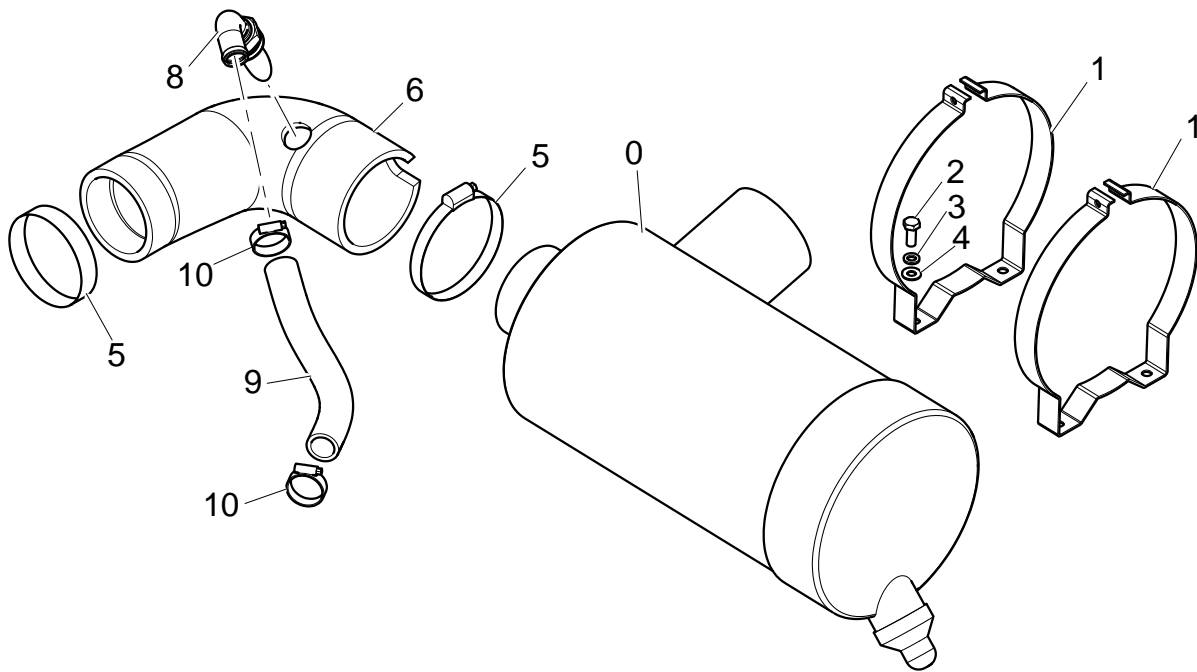
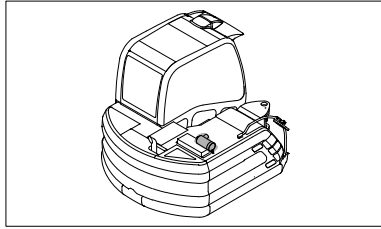
0.001

01

p1

10/06

AIR CLEANER  
FILTRO ARIA  
FILTRE A AIR  
LUFTFILTER



**BUY NOW**

**Then Instant Download  
the Complete Manual  
Thank you very much!**