

Document Title: <b>Frame, technical data</b>	Function Group: <b>710</b>	Information Type: <b>Service Information</b>	Date: <b>2014/4/3 0</b>
Profile:			

## Frame, technical data

Item		Unit	Specification
			Rubber tracks
Length of lower frame		mm	1045
Joint distance		mm	-
Number of links		pcs.	34
Number of track supporting idlers		pcs.	0
Number of track rollers		pcs.	6
Tension spring	Type	–	Hydraulic adjustment (grease)
	Spring, adjustment length	mm	140
	Adjustment force	kg	1300
Track drive	Number of teeth	pcs.	14
	Pitch diameter	mm	-
Track pads	Number of track pads	pcs.	34
	Width of track pad	mm	230

Document Title: <b>General description</b>	Function Group: <b>710</b>	Information Type: <b>Service Information</b>	Date: <b>2014/4/3 0</b>
Profile:			

## General description

The compact excavator consists of a crawler unit frame ( [Invalid linktarget] /1) and a slewable superstructure ( [Invalid linktarget] /2) in welded design, which are connected by a totally enclosed live ring ( [Invalid linktarget] /3).

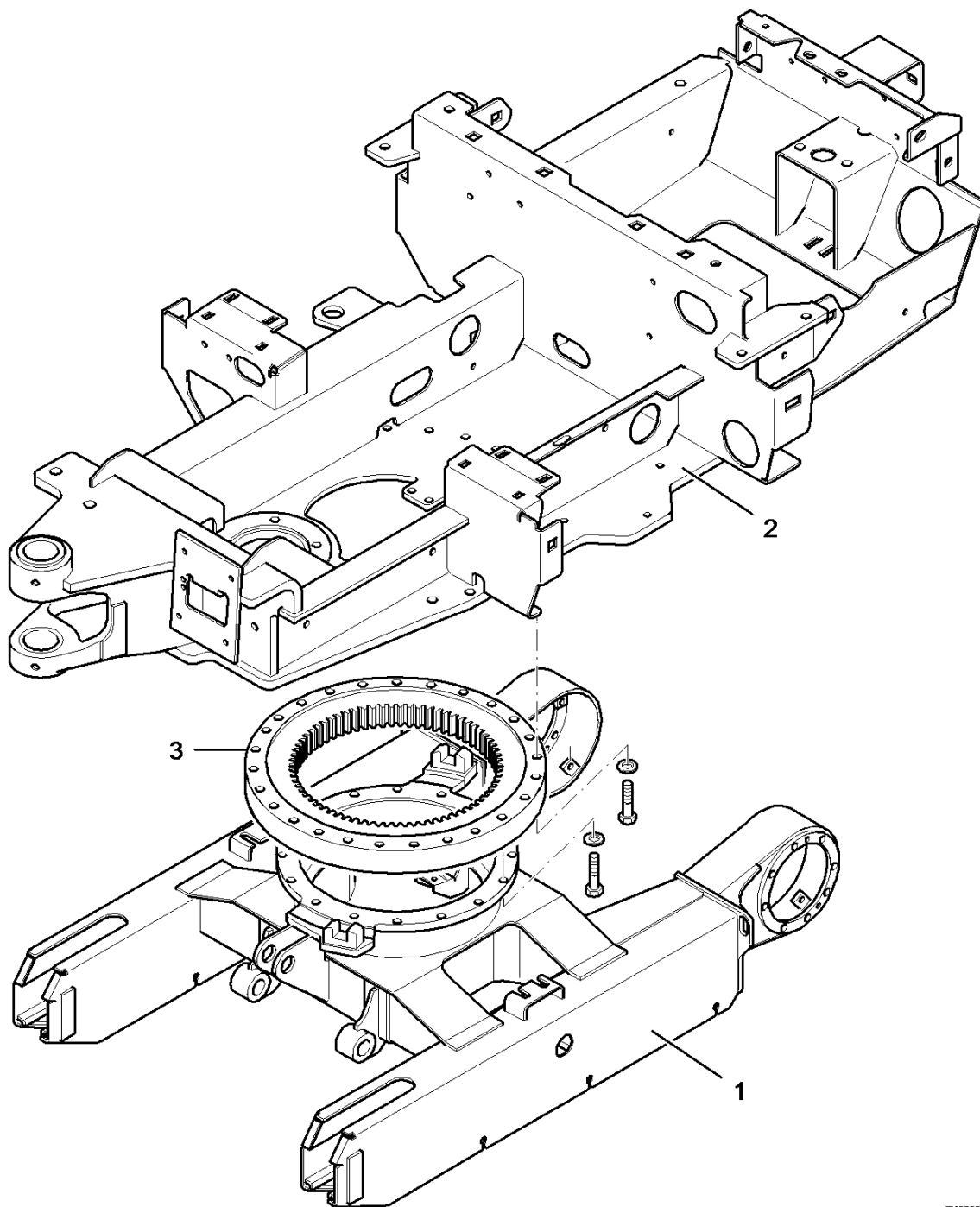
The slewing superstructure carries operator's stand, engine and excavating equipment.

The live ring with internal gearing is driven by a hydraulic motor.

In case of a leak or damage of a circuit component the slewing facility is automatically braked.

The crawler unit frame carries the dozer blade and the associated hydraulic equipment.

Two rubber crawler tracks mounted to the crawler unit frame facilitate the travel movement of the machine. The tracks are driven by a gear motor each.



E130207A

**Figure 1**

- 1 Main chassis
- 2 Slewing superstructure
- 3 Live ring

Document Title: <b>Live ring, tightening torques</b>	Function Group: <b>710</b>	Information Type: <b>Service Information</b>	Date: <b>2014/4/3 0</b>
Profile:			

## Live ring, tightening torques

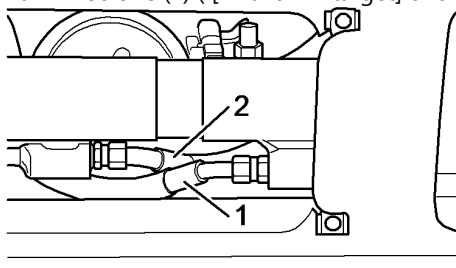
Live ring	
Screws - live ring	140 ±25 Nm

Document Title: <b>Assembling the cylinder for adjustable track width</b>	Function Group: <b>718</b>	Information Type: <b>Service Information</b>	Date: <b>2014/4/3 0</b>
Profile:			

## Assembling the cylinder for adjustable track width

### Op nbr

1. Take out the cylinder ( [Invalid linktarget] /3) for track width adjustment.
2. Knock the stub axle (2) ( [Invalid linktarget] and [Invalid linktarget] ) into piston and piston rod sides.
3. Turn in screws (1) ( [Invalid linktarget] und [Invalid linktarget] ) and tighten with  $105 \pm 20$  Nm.



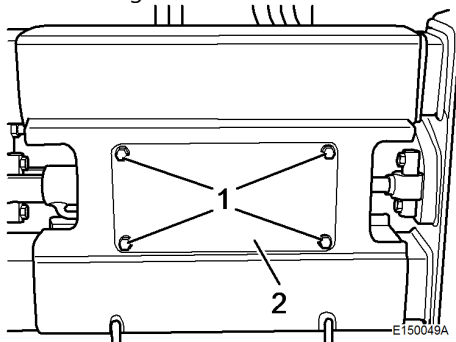
E150050A

**Figure 1**

### NOTE!

Remove all plugs before connecting the hydraulic lines.

4. Connect hydraulic lines (1 and 2), align correctly and tighten with  $18 \pm 4$  Nm.
5. Check hydraulic oil level, top up if necessary
6. Start the engine, check the function of the machine and check for leaks.



E150049A

**Figure 2**

7. Attach cover (2), turn in screws (1) and tighten with  $60 \pm 10$  Nm.

**Hello**

**Thank you very much  
for reading.**

**PLEASE CLICK HERE.**

Then back to the site.

At the bottom of the  
page,

free add to card.

**Then get more free information**