

Document Title: <b>General notes to be observe when working on power transmission assemblies</b>	Function Group: <b>400</b>	Information Type: <b>Service Information</b>	Date: <b>2014/4/16</b>
Profile: <b>CEX, EC35 [GB]</b>			

## **General notes to be observe when working on power transmission assemblies**

All work to be performed should be executed with greatest care and conscientiousness!

The safety regulations must be observed and strictly applied!

Any regulations of the responsible liability association must be followed.

Make sure that no dirt and other contaminating substances can enter into the system.

- Clean fittings, filler caps and their immediate surrounding area so that no dirt can fall in.
- Before disconnecting any hoses, pipes or similar shut down the engine and relieve the pressure in the system.
- Before starting repair work close all ports and openings with clean plugs or caps and do not forget to remove plugs and caps before installation.
- Use only lint-free cloths to wipe out and clean hydraulic components.
- When filling up the hydraulic oil tank the oil must generally be passed through the filter, because even new oil from closed oil drums does not fulfilled the requirements demanded from a clean hydraulic oil.
- When assembling hydraulic parts grease must **not** be used as a sliding agent, use hydraulic oil instead.
- If metal chips and abrasion residuals are found in the hydraulic oil tank all hydraulic circuits must be thoroughly flushed and cleaned.

Repairs must generally be carried out with **genuine spare parts**.

Before disassembling marks all parts as a measure to help during later reassembly.

Generally use new seals when reassembling. Self-locking nuts must generally be replaced.

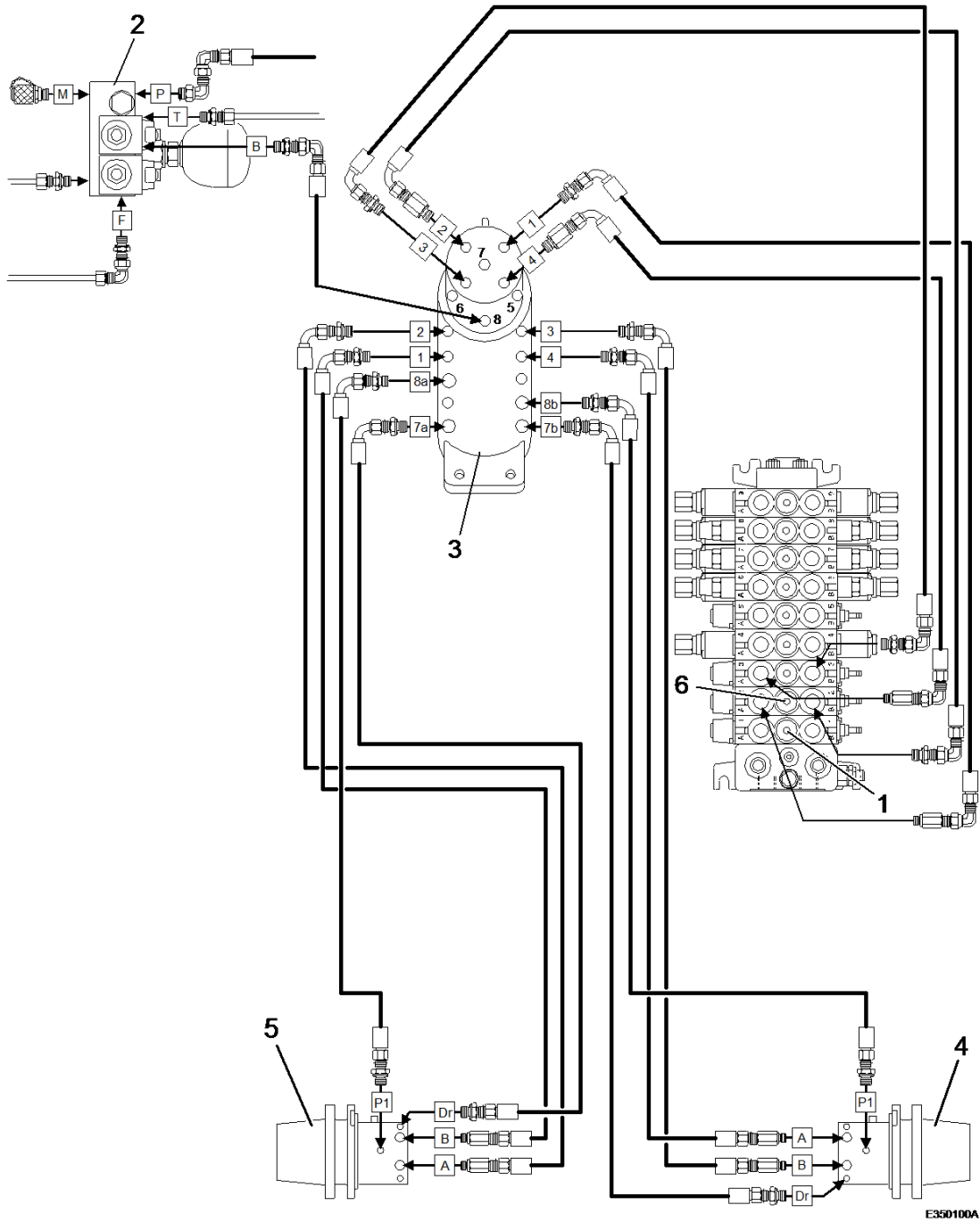
Perform all repair work only by using suitable tools and perform adjustments generally with the help of specified measuring equipment.

When installing new components the adjustments must be generally checked, i.e. diesel engine and new components must be adapted to each other.

- Check pressures and rotational speeds.
- Check fittings and flanges for leaks.
- Watch the oil level in the hydraulic oil tank, if necessary top up hydraulic oil.

Document Title: <b>Working principle of the travel system</b>	Function Group: <b>400</b>	Information Type: <b>Service Information</b>	Date: <b>2014/4/16</b>
Profile: <b>CEX, EC35 [GB]</b>			

**Working principle of the travel system**



**Figure 1**

1. Control block element: Left hand travel control

2. Power unit (servo controls)
3. Rotary oil distributor
4. Travel gear motor, right hand side
5. Travel gear motor, left hand side
6. Control block element: Right hand travel control.

Document Title: <b>Technical data</b>	Function Group: <b>440</b>	Information Type: <b>Service Information</b>	Date: <b>2014/4/16</b>
Profile: <b>CEX, EC35 [GB]</b>			

## Technical data

### Volvo standard tightening torques

The tightening torques in the following tables apply for screw connections of the corresponding strength class. If not specified differently, the tables are to be considered as general instructions for the tightening of screw connections.

#### **NOTE!**

For flange bolts of type U6FS the values must be increased by 10%. Screws and nuts must be clean and oiled.

Document Title: <b>General notes to be observe when working on power transmission assemblies</b>	Function Group: <b>440</b>	Information Type: <b>Service Information</b>	Date: <b>2014/4/16</b>
Profile: <b>CEX, EC35 [GB]</b>			

## **General notes to be observe when working on power transmission assemblies**

### **NOTE!**

Special notes to improve operating, inspection and adjustment procedures as well as service work.

- trained personnel
- specified tools and testing equipment, such as test stand, flaw tester, special tools
- genuine spare parts

All work to be performed should be executed with greatest care and conscientiousness!

The safety regulations must be observed and strictly applied!

Any regulations of the responsible liability association must be followed.

Make sure that no dirt and other contaminating substances can enter into the system.

- Clean fittings, filler caps and their immediate surrounding area so that no dirt can fall in.
- Before disconnecting any hoses, pipes or similar shut down the engine and relieve the pressure in the system.
- Before starting repair work close all ports and openings with clean plugs or caps and do not forget to remove plugs and caps before installation.
- Use only lint-free cloths to wipe out and clean hydraulic components.
- When filling up the hydraulic oil tank the oil must generally be passed through the filter, because even new oil from closed oil drums does not fulfilled the requirements demanded from a clean hydraulic oil.
- When assembling hydraulic parts grease must **not** be used as a sliding agent, use hydraulic oil instead.
- If metal chips and abrasion residuals are found in the hydraulic oil tank all hydraulic circuits must be thoroughly flushed and cleaned.

Repairs must generally be carried out with **genuine spare parts**.

Before disassembling marks all parts as a measure to help during later reassembly.

Generally use new seals when reassembling. Self-locking nuts must generally be replaced.

Perform all repair work only by using suitable tools and perform adjustments generally with the help of specified measuring equipment.

When installing new components the adjustments must be generally checked, i.e. diesel engine and new components must be adapted to each other.

- Check pressures and rotational speeds.
- Check fittings and flanges for leaks.
- Watch the oil level in the hydraulic oil tank, if necessary top up hydraulic oil.

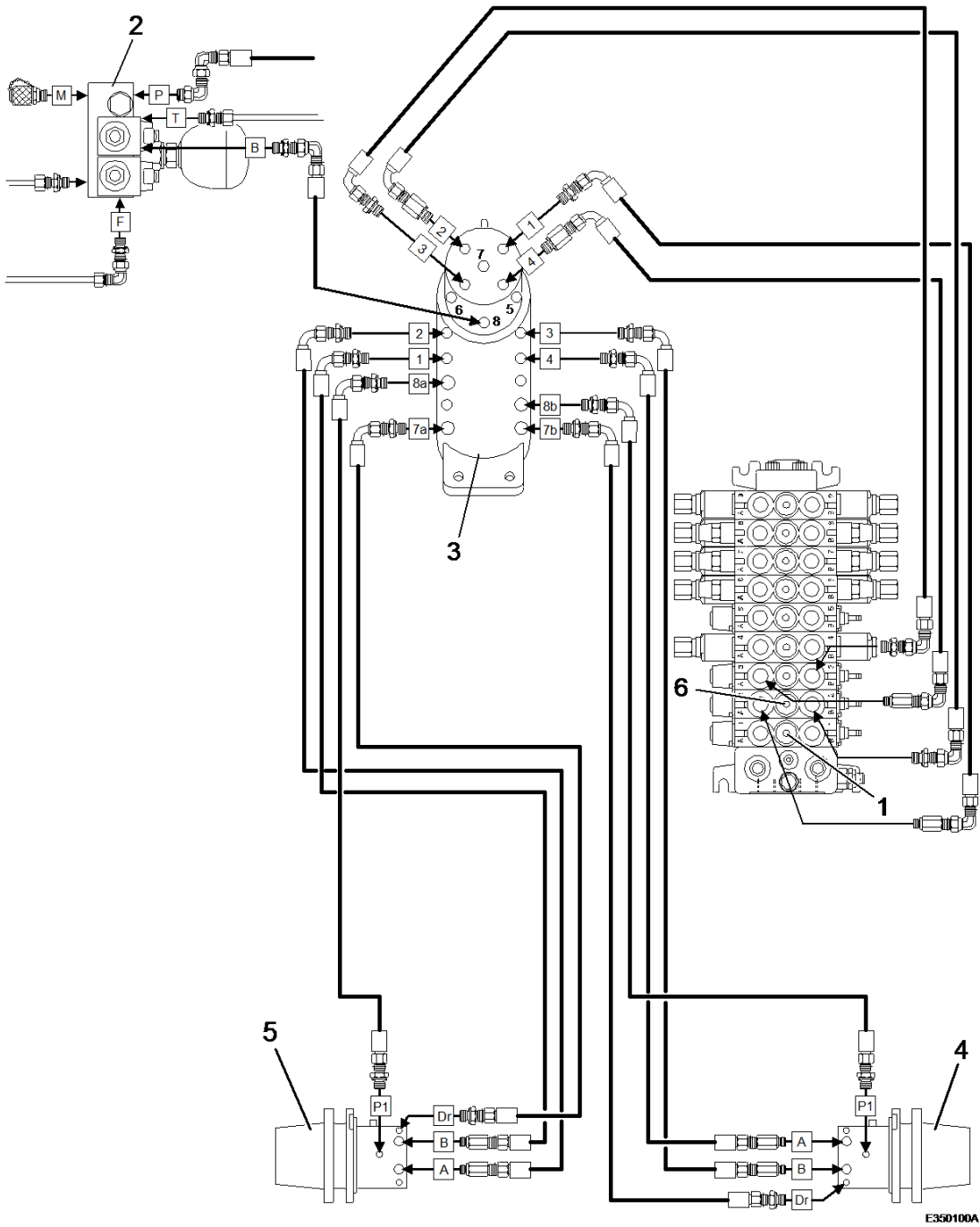
### **NOTE!**

The wheel motors contain parts that have been pressed in. These parts can normally not be disassembled and should not be removed with force.

Document Title: <b>Specifications</b>	Function Group: <b>440</b>	Information Type: <b>Service Information</b>	Date: <b>2014/4/16</b>
Profile: <b>CEX, EC35 [GB]</b>			

## Specifications

### Hydraulic circuit



**Figure 1**

1. Control block element: Left hand travel control

2. Power unit (servo control)
3. Rotary oil distributor
4. Travel gear motor, right hand side
5. Travel gear motor, left hand side
6. Control block element: Right hand travel control.

Thank you so much for reading.  
Please click the “Buy Now!”  
button below to download the  
complete manual.



After you pay.

You can download the most  
perfect and complete manual in  
the world immediately.

Our support email:

[ebooklibonline@outlook.com](mailto:ebooklibonline@outlook.com)