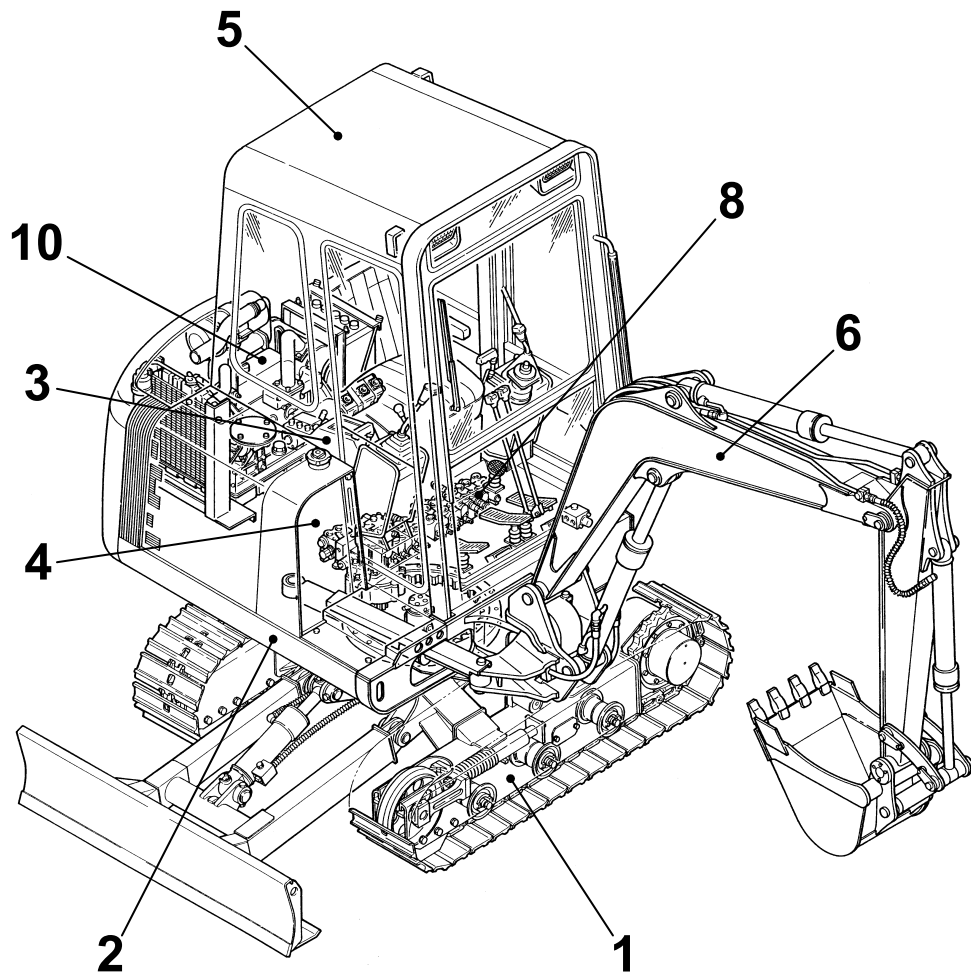


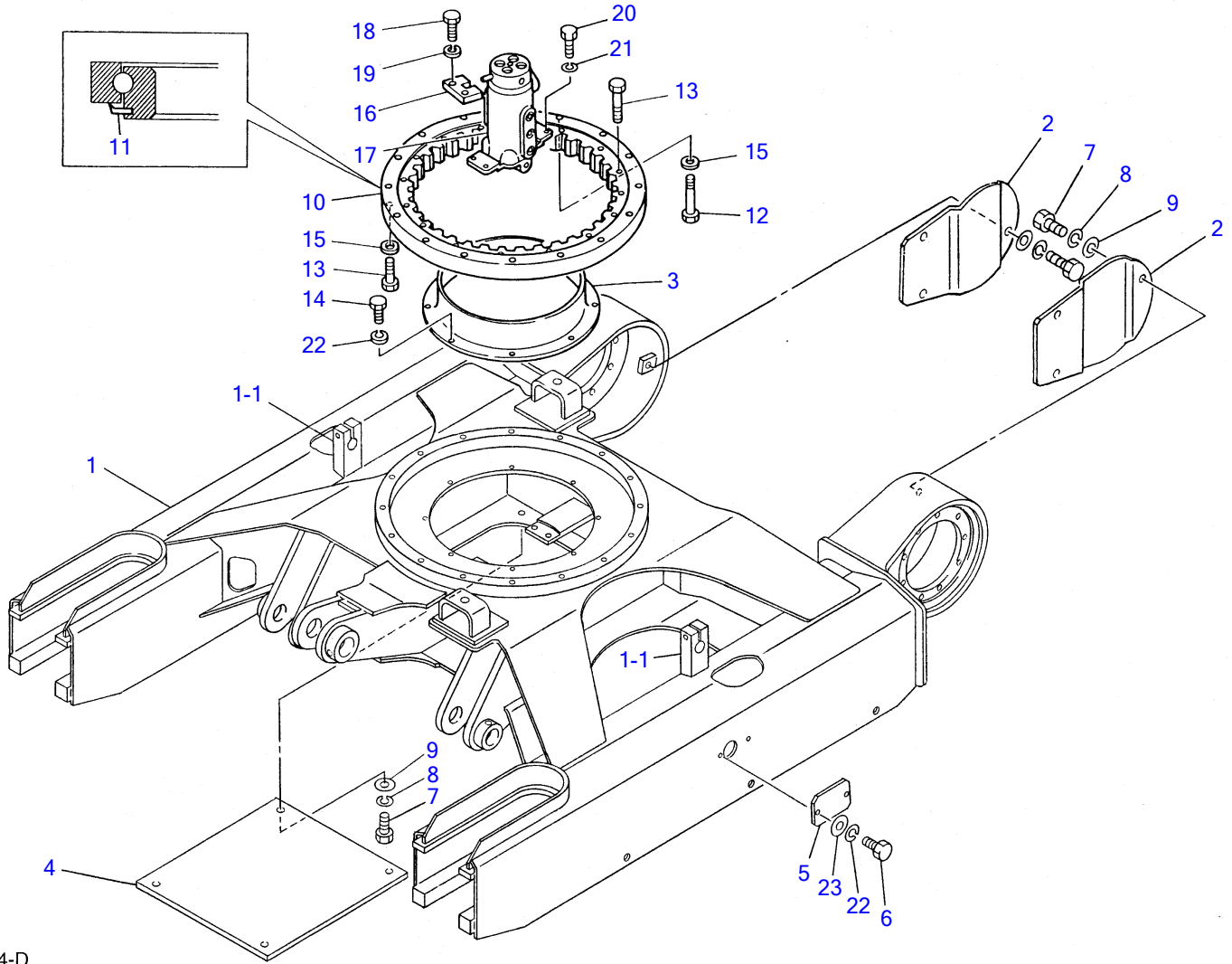
# TB025

Book No.PE3-102Z5

Serial No. 1255001-1258249



# TAKEUCHI



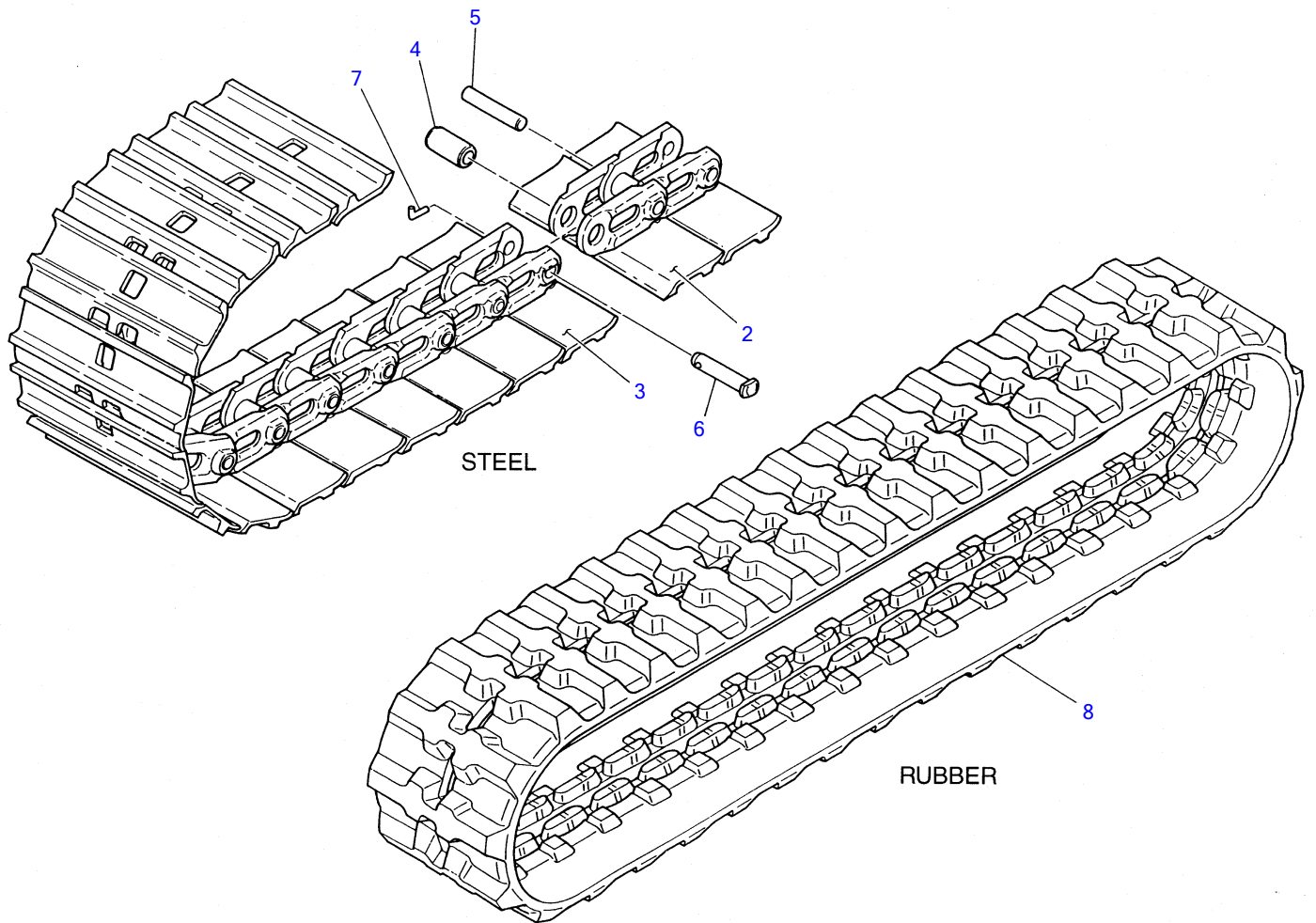
E3-01a-4-D

**LOWER FRAME**

Item	Part number	Description	Q'ty	Chan.	Serial No.	Serv.	Remarks
1	X 0351001100	FRAME	1				
1-1	0471000900	• BRACKET	1				
2	0471001400	COVER	2				
3	0432300100	BATH, grease	1				
4	0431003600	COVER	1				
5	0341004000	COVER	2				
6	1100040816	BOLT	4				
7	1100041016	BOLT	10				
8	1140020010	WASHER, spring	10				
9	1141110010	WASHER	10				
10	1913003600	BEARING, slew	1				
11	1913003609	• SEAL	1				
12	0352000100	BOLT	1				
13	1101051265	BOLT	31				
14	1100040816	BOLT	8				
15	1141540012	WASHER	16				
16	0072100100	PLATE	1				
17	1904006400	JOINT, swivel	1				
18	1101051225	BOLT	2				
19	1140020012	WASHER, spring	2				
20	1100040825	BOLT	4				
21	1140020008	WASHER, spring	4				
22	1140020008	WASHER, spring	12				
23	1141110008	WASHER	4				

E301a4L

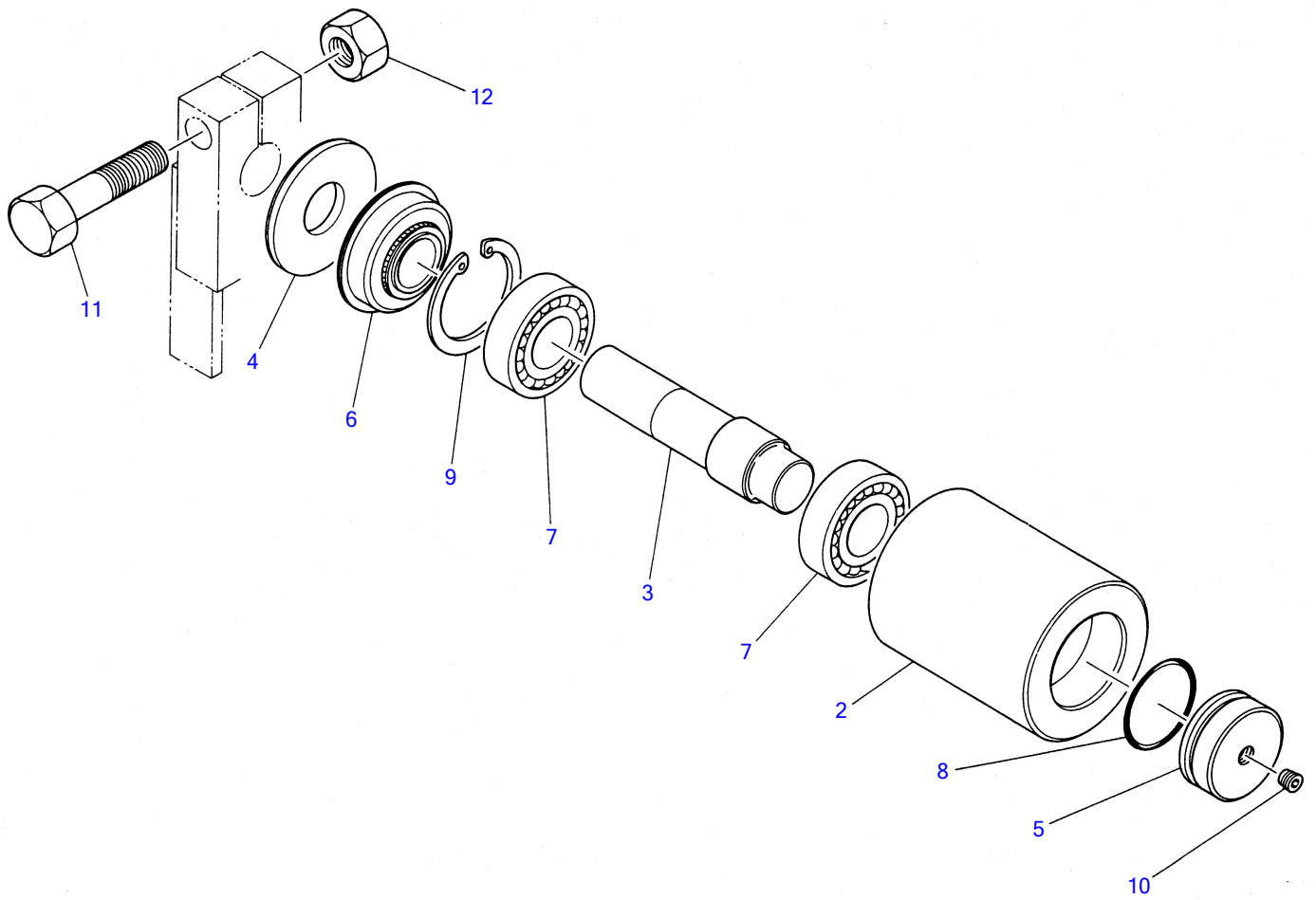
TB025 Book No. PE3-102Z4 S/N1255001-1258249  
CRAWLER BELT



E3-02a-2-D

**CRAWLER BELT**

Item	Part number	Description	Q'ty	Chan.	Serial No.	Serv.	Remarks
1	<b>1914053200</b>	CRAWLER BELT ASSY (steel)	2				
2	<b>1914053013</b>	▪ PLATE ASSY	38				
3	<b>1914053214</b>	▪ PLATE ASSY, master	1				
4	<b>1914008205</b>	▪ BUSHING	39				
5	<b>1914008209</b>	▪ PIN, track	38				
6	<b>1914008210</b>	▪ PIN, master	1				
7	<b>1914008211</b>	▪ PIN, coter	1				
8	<b>1914067000</b>	CRAWLER BELT (rubber)	2		1255001~1257556		
	<b>1914067400</b>	CRAWLER BELT (rubber)	2	(H)	1257557~		short pitch
	<b>E302a3L</b>						



Z3-03a-0-D

**CARRIER ROLLER**

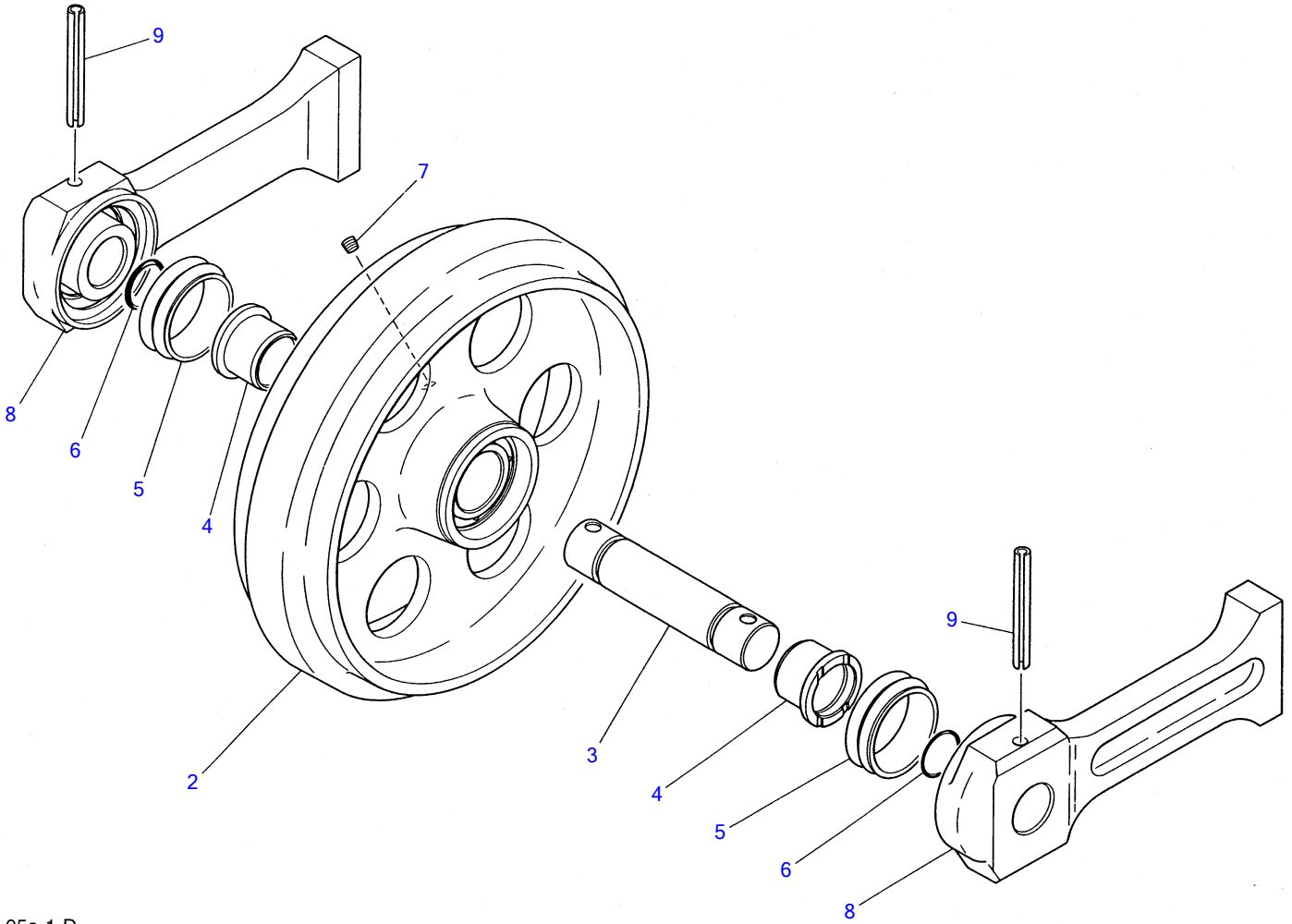
Item	Part number	Description	Q'ty	Chan.	Serial No.	Serv.	Remarks
1	0431200500	ROLLER ASSY	2				
2	0431200100	• ROLLER	1				
3	0431200200	• SHAFT	1				
4	0431200300	• COVER	1				
5	0431200400	• COVER	1				
6	1431202552	• SEAL	1				
7	1300006205	• BEARING	2				
8	1420100400	• O-RING	1				
9	1221000052	• RING, snap	1				
10	1501810001	• PLUG	1				
11	1100051060	BOLT	2				
12	1130050010	NUT	2				
	E303a2L						





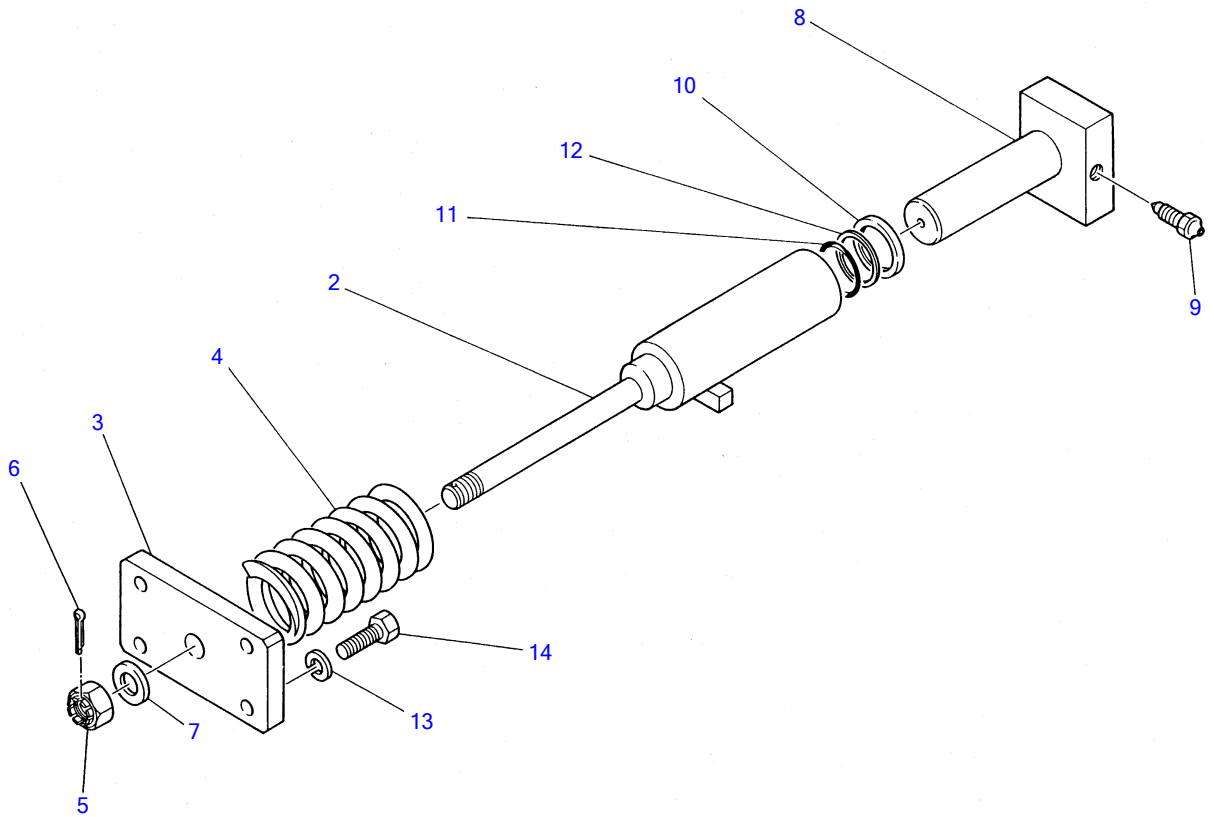
**TRACK ROLLER**

Item	Part number	Description	Q'ty	Chan.	Serial No.	Serv.	Remarks
1	<b>0431300500</b>	ROLLER ASSY	6				
2	<b>0431300100</b>	▪ ROLLER	1				
3	<b>0431300200</b>	▪ SHAFT	1				
4	<b>0431300300</b>	▪ COVER	2				
5	<b>0431300400</b>	▪ RETAINER	1				
6	<b>1300006306</b>	▪ BEARING	2				
7	<b>1432500450</b>	▪ SEAL, floating	2				
8	<b>1222015080</b>	▪ RING, seeger	1				
9	<b>1220000030</b>	▪ RING, snap	2				
10	<b>1420700250</b>	▪ O-RING	2				
11	<b>1420700700</b>	▪ O-RING	1				
12	<b>1501810001</b>	▪ PLUG	1				
13	<b>1101051450</b>	BOLT	12				
14	<b>1141540014</b>	WASHER	12				
	<b>E304a0L</b>						



E3-05a-1-D

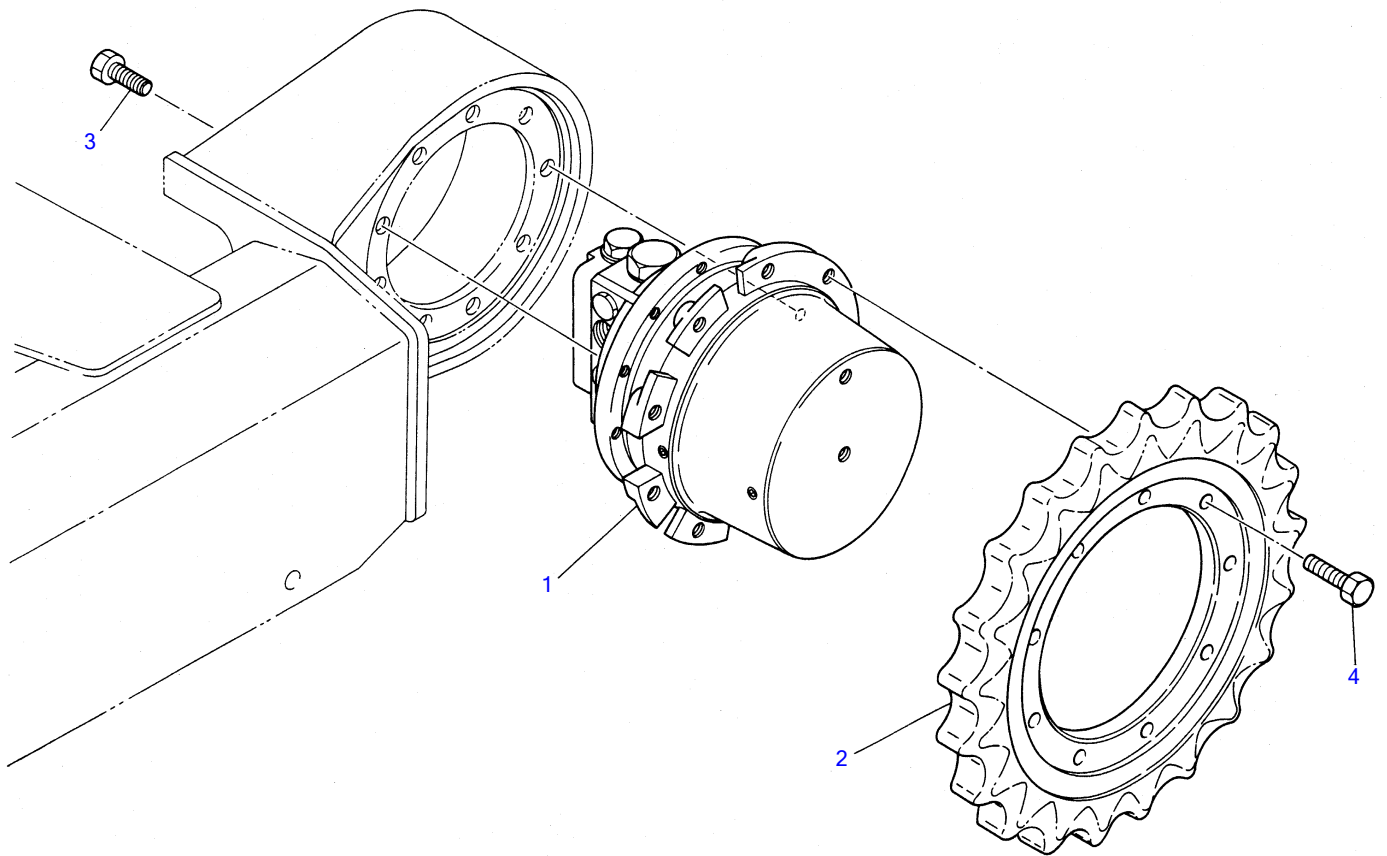
FRONT IDLER						
Item	Part number	Description	Q'ty	Chan.	Serial No.	Serv. Remarks
1	0431490010	IDLER ASSY, front	2			
2	0431401100	▪ IDLER	1			
3	0431400300	▪ SHAFT	1			
4	0431400600	▪ BUSHING	2			
5	1432500560	▪ SEAL, floating	2			
6	1420700300	▪ O-RING	2			
7	1501820001	▪ PLUG	1			
8	0431400500	▪ SLIDE	2			old type
8-1	0351400100	▪ SLIDE	2	(H)		new type
9	1213001090	▪ PIN, spring	2			
	E305a4L					



E3-06a-0-D

**TRACK ADJUSTER**

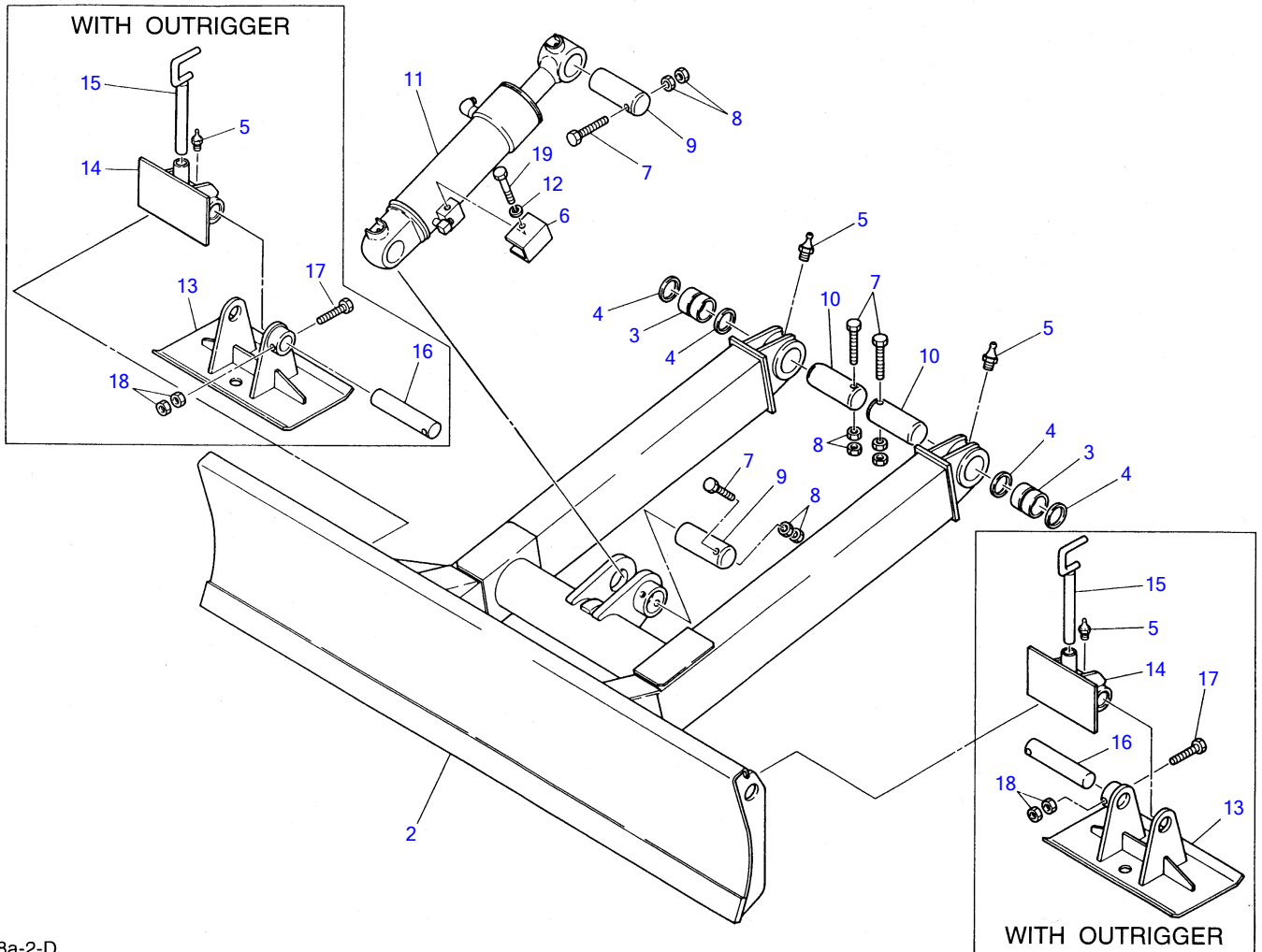
Item	Part number	Description	Q'ty	Chan.	Serial No.	Serv.	Remarks
1	<b>0431501100</b>	CUSHION ASSY	2				
2	<b>0431501200</b>	· CYLINDER	1		1255001~1255976		
	<b>0431501400</b>	· CYLINDER	1	(H)	1255977~		
3	<b>0431500300</b>	· PLATE	1				
4	<b>0161506100</b>	· SPRING	1				
5	<b>1132030020</b>	· NUT	1				
6	<b>1210000440</b>	· PIN, split	1				
7	<b>1141540020</b>	· WASHER	1				
8	<b>0431501300</b>	· PISTON	1				
9	<b>1541300501</b>	· VALVE ASSY	1				
10	<b>1400402340</b>	· SEAL, oil	1				
11	<b>1420010400</b>	· O-RING	1				
12	<b>1421020400</b>	· RING, back-up	1				
13	<b>1140010020</b>	WASHER, spring	8				
14	<b>1101051240</b>	BOLT	8				
	<b>E306a2L</b>						



Z3-07a-1-D

**TRAVEL DEVICE**

Item	Part number	Description	Q'ty	Chan.	Serial No.	Serv.	Remarks
1	<b>1903108100</b>	MOTOR ASSY	2				with P. B.
	<b>1903108400</b>	MOTOR ASSY	2				without P. B.
2	<b>0271600100</b>	SPROCKET	2				
3	<b>1100051230</b>	BOLT	18				
4	<b>1100051235</b>	BOLT	18				
	<b>E307a2L</b>						



E3-08a-2-D



**BUY NOW**

**Then Instant Download  
the Complete Manual  
Thank you very much!**