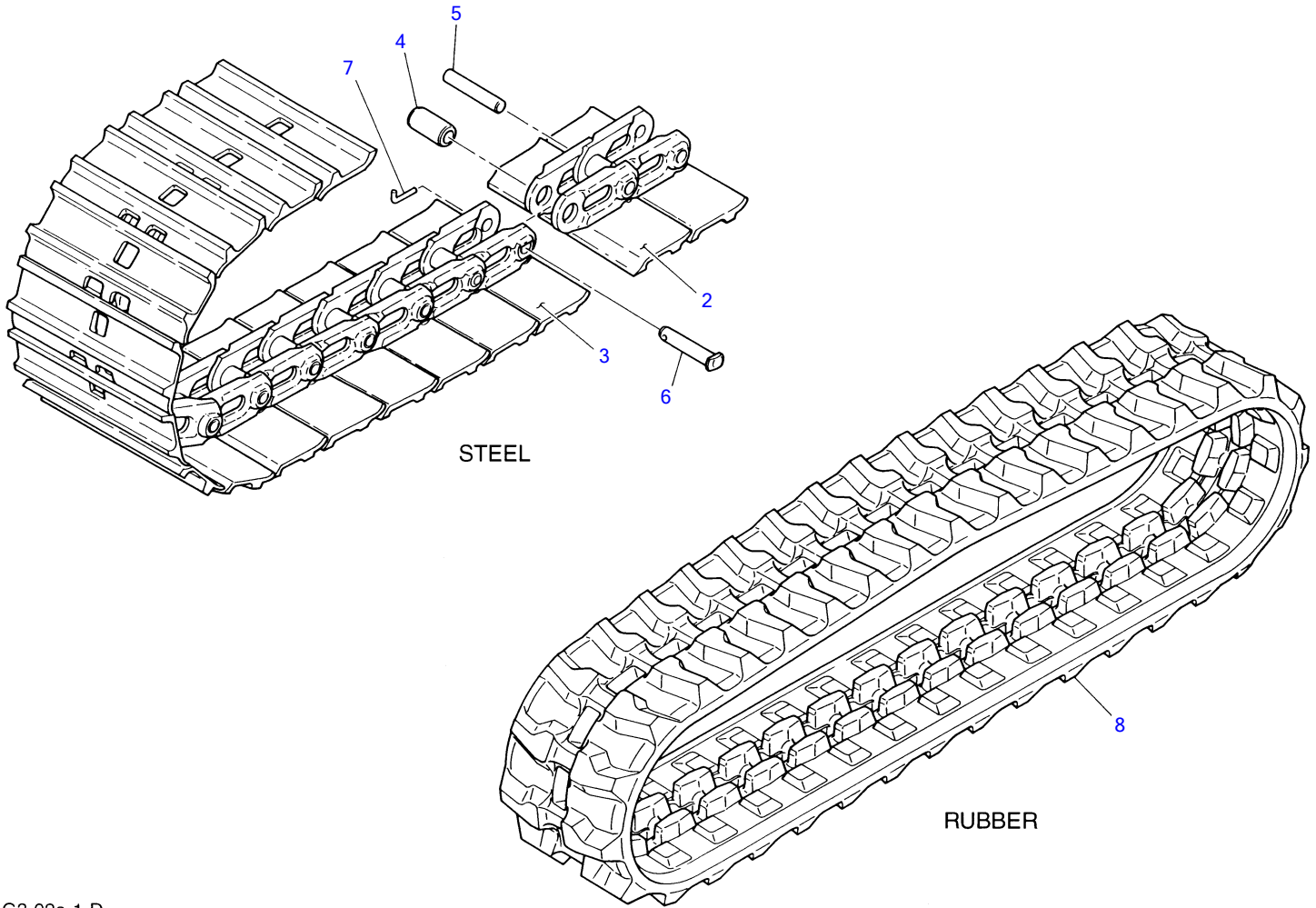


G3-01a-3-D

LOWER FRAME

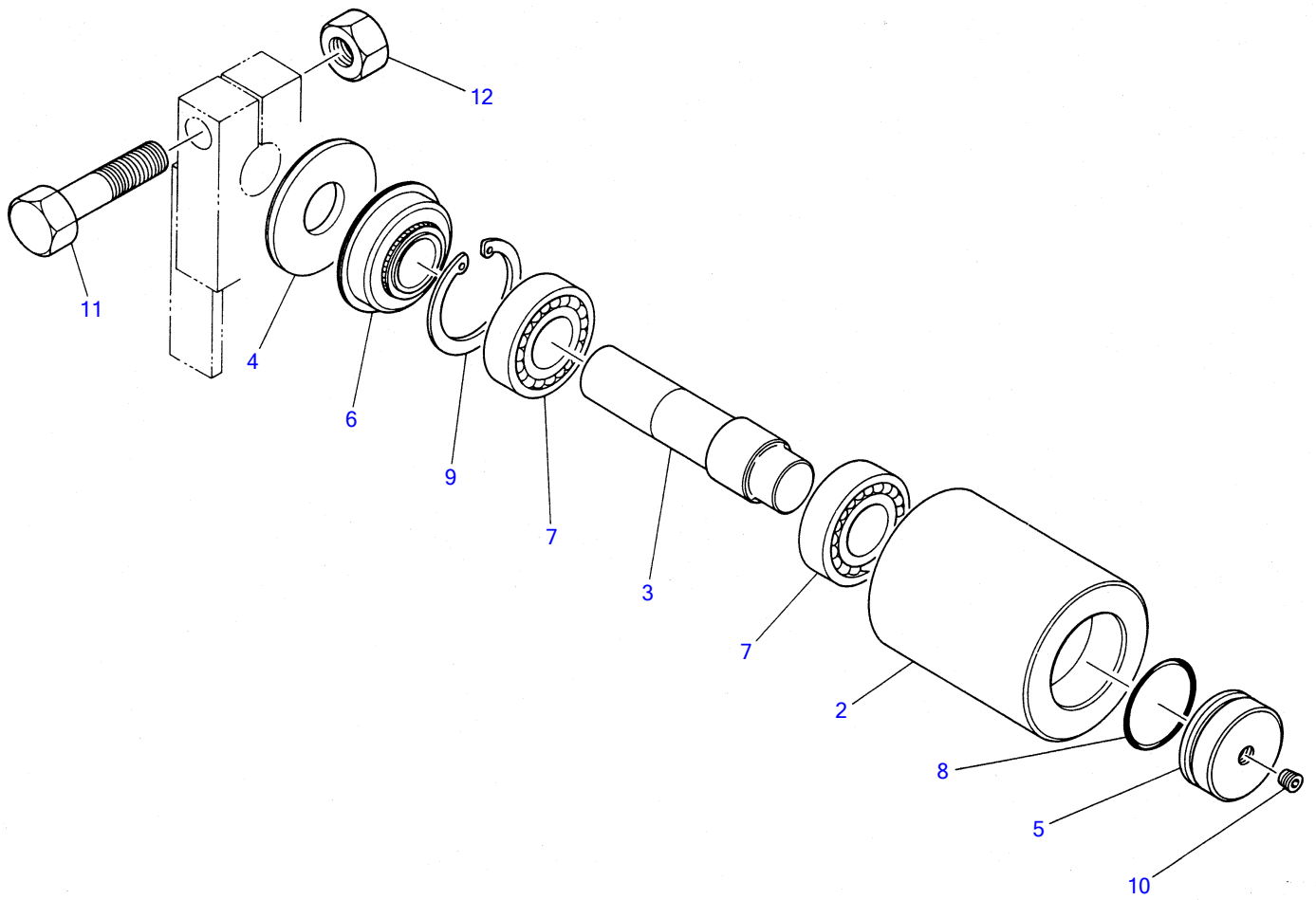
Item	Part number	Description	Q'ty	Chan.	Serial No.	Serv.	Remarks
Item	Part number	Description	?	Chan.	SerialNo.		Remarks
1	X 0371001100	FRAME	1				
1-1	0471000900	• BRACKET	2				
2	0471001400	COVER	2				
3	0341004000	COVER	2				
4	0431003600	COVER	1				
5	1100040816	BOLT	12				
6	1100041020	BOLT	10				
7	1141110010	WASHER	10				
8	1140020010	WASHER, spring	10				
9	1913003700	BEARING, slew	1				
9-1	1913003709	• SEAL	1				
10	0432300100	BATH	1				
11	0352000100	BOLT	1				
12	1101051265	BOLT	31				
13	1141540012	WASHER	16				
14	1140020008	WASHER, spring	4				
15	1140020008	WASHER, spring	8				
16	1904005900	JOINT, swivel	1				
17	1101041230	BOLT	2				
18	1140020012	WASHER, spring	6				
19	1101041235	BOLT	4				
20	1141110012	WASHER	4				
21	0442100100	PLATE	1				
22	1141110008	WASHER	4				
	G301a3L						



G3-02a-1-D

CRAWLER BELT

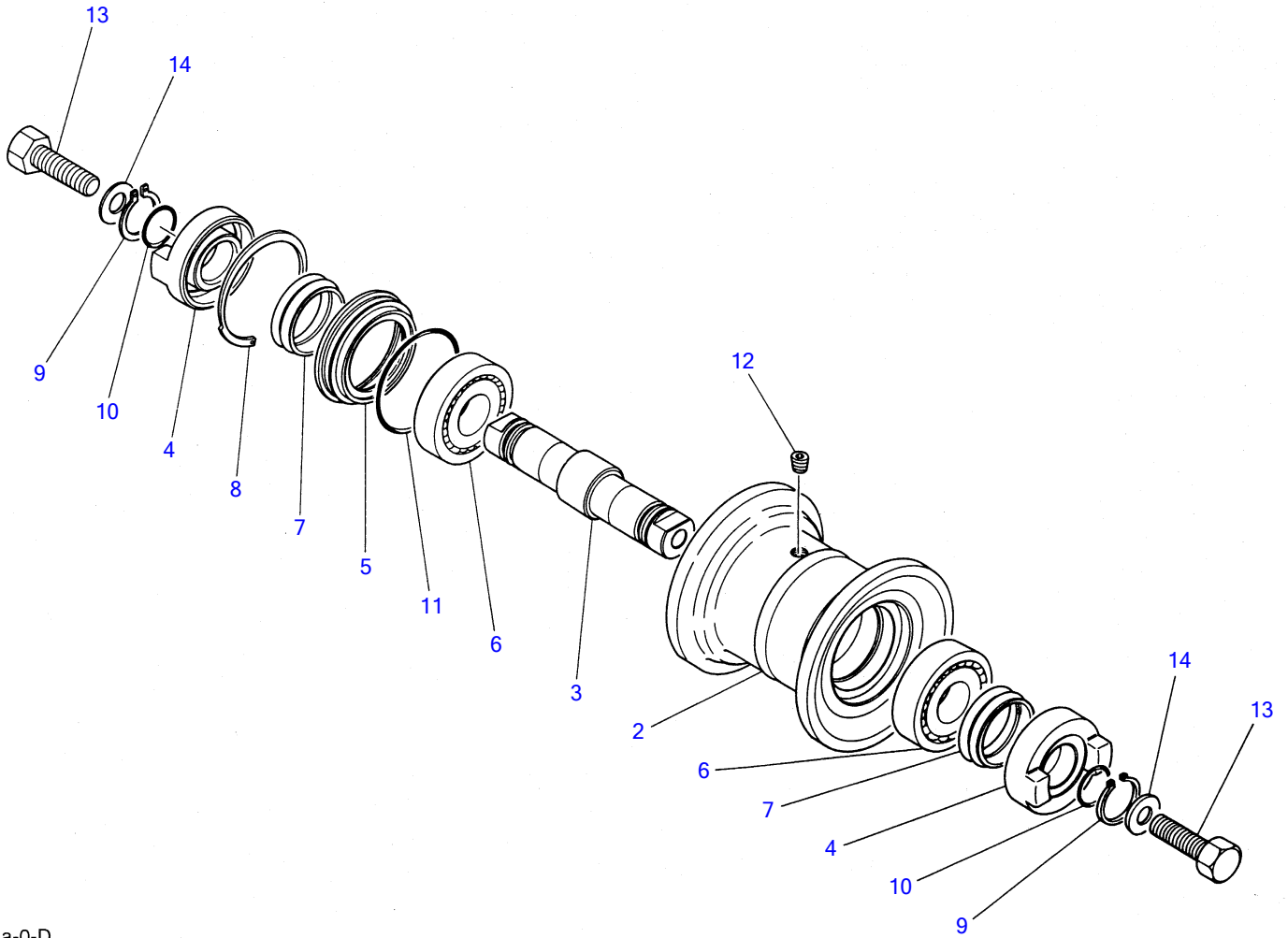
Item	Part number	Description	Q'ty	Chan.	Serial No.	Serv.	Remarks
1	1914054100	BELT ASSY, steel crawler	2				
2	1914054013	▪ PLATE ASSY	42				
3	1914054114	▪ PLATE ASSY, master	1				
4	1914008205	▪ BUSHING	43				
5	1914008209	▪ PIN, track	42				
6	1914008210	▪ PIN, master	1				
7	1914008211	▪ PIN	1				
8	1914068000	BELT, rubber crawler	2		1355001~1357527		
	1914068300	BELT, rubber crawler	2	(H)	1357528~		short pitch
	G302a3L						



Z3-03a-0-D

CARRIER ROLLER

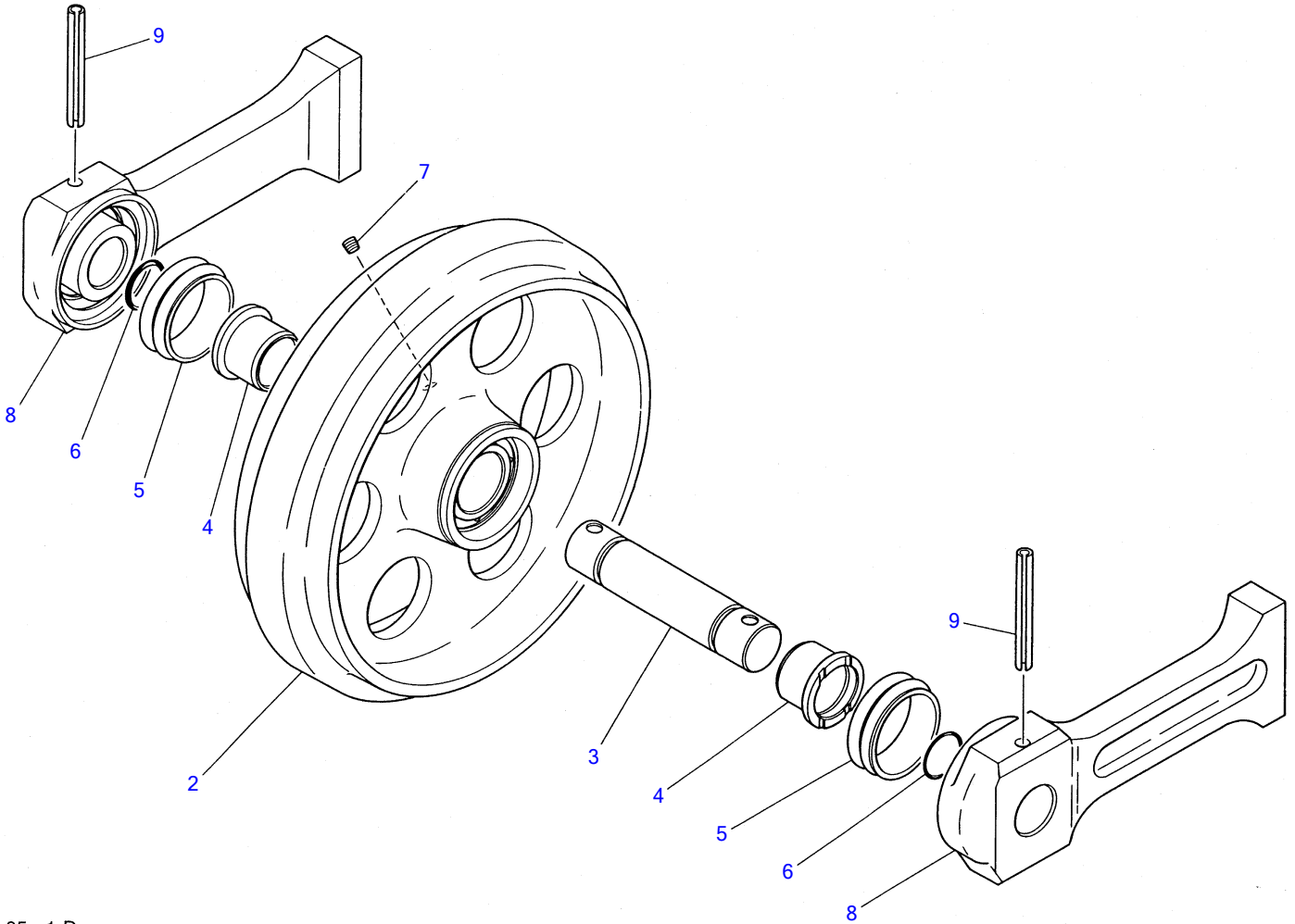
Item	Part number	Description	Q'ty	Chan.	Serial No.	Serv.	Remarks
1	0431200500	ROLLER ASSY	2				
2	0431200100	• ROLLER	1				
3	0431200200	• SHAFT	1				
4	0431200300	• COVER	1				
5	0431200400	• COVER	1				
6	1431202552	• SEAL	1				
7	1300006205	• BEARING	2				
8	1420100400	• O-RING	1				
9	1221000052	• RING, snap	1				
10	1501810001	• PLUG	1				
11	1100051060	BOLT	2				
12	1130050010	NUT	2				
	G303a2L						



Z3-04a-0-D

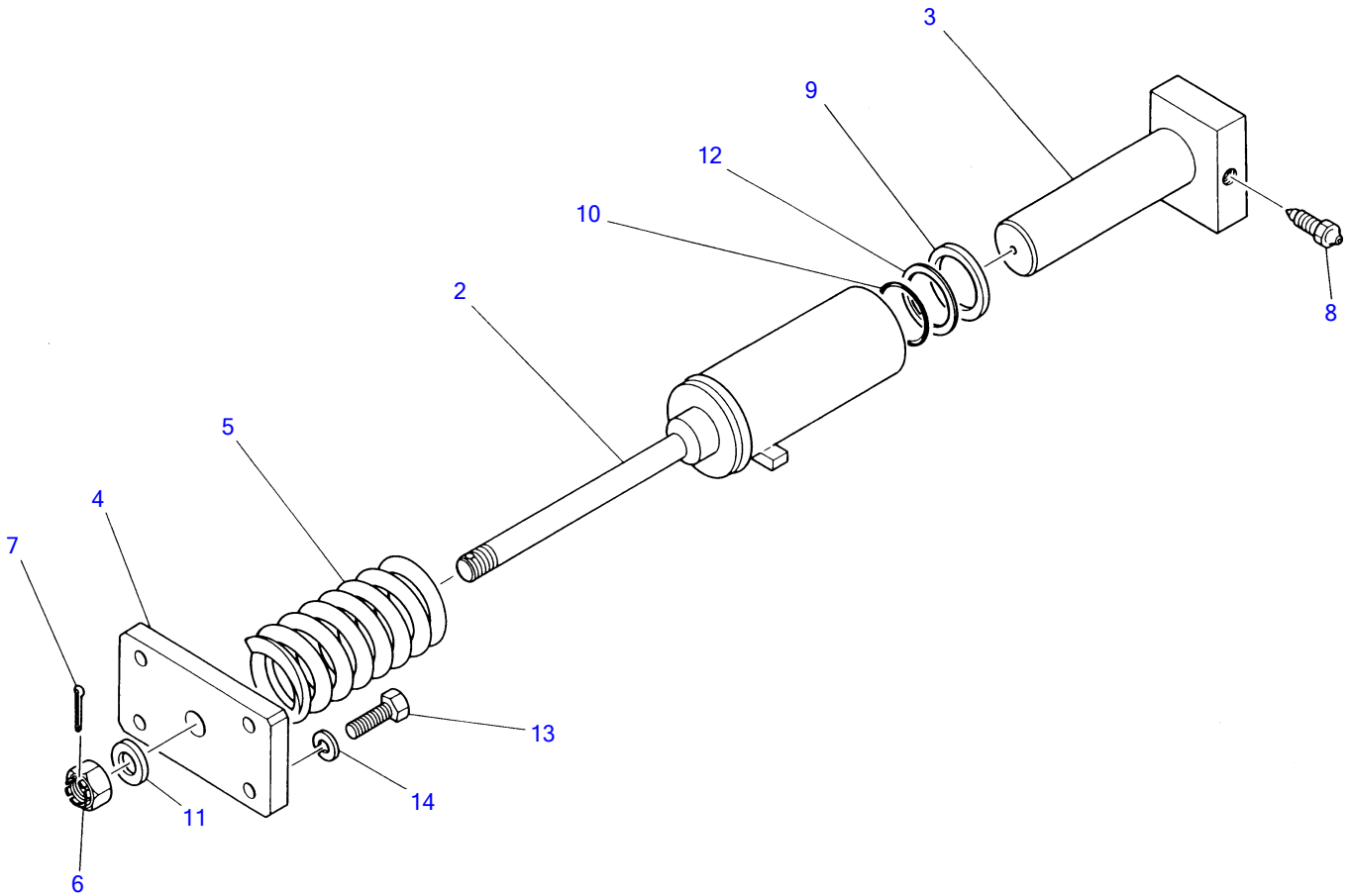
TRACK ROLLER

Item	Part number	Description	Q'ty	Chan.	Serial No.	Serv.	Remarks
1	0431300500	ROLLER ASSY	8				
2	0431300100	▪ ROLLER	1				
3	0431300200	▪ SHAFT	1				
4	0431300300	▪ COVER	2				
5	0431300400	▪ RETAINER	1				
6	1300006306	▪ BEARING	2				
7	1432500450	▪ SEAL, floating	2				
8	1222015080	▪ RING, seeger	1				
9	1220000030	▪ RING, snap	2				
10	1420700250	▪ O-RING	2				
11	1420700700	▪ O-RING	1				
12	1501810001	▪ PLUG	1				
13	1101051450	BOLT	16				
14	1141540014	WASHER	16				
	F304a0L						



E3-05a-1-D

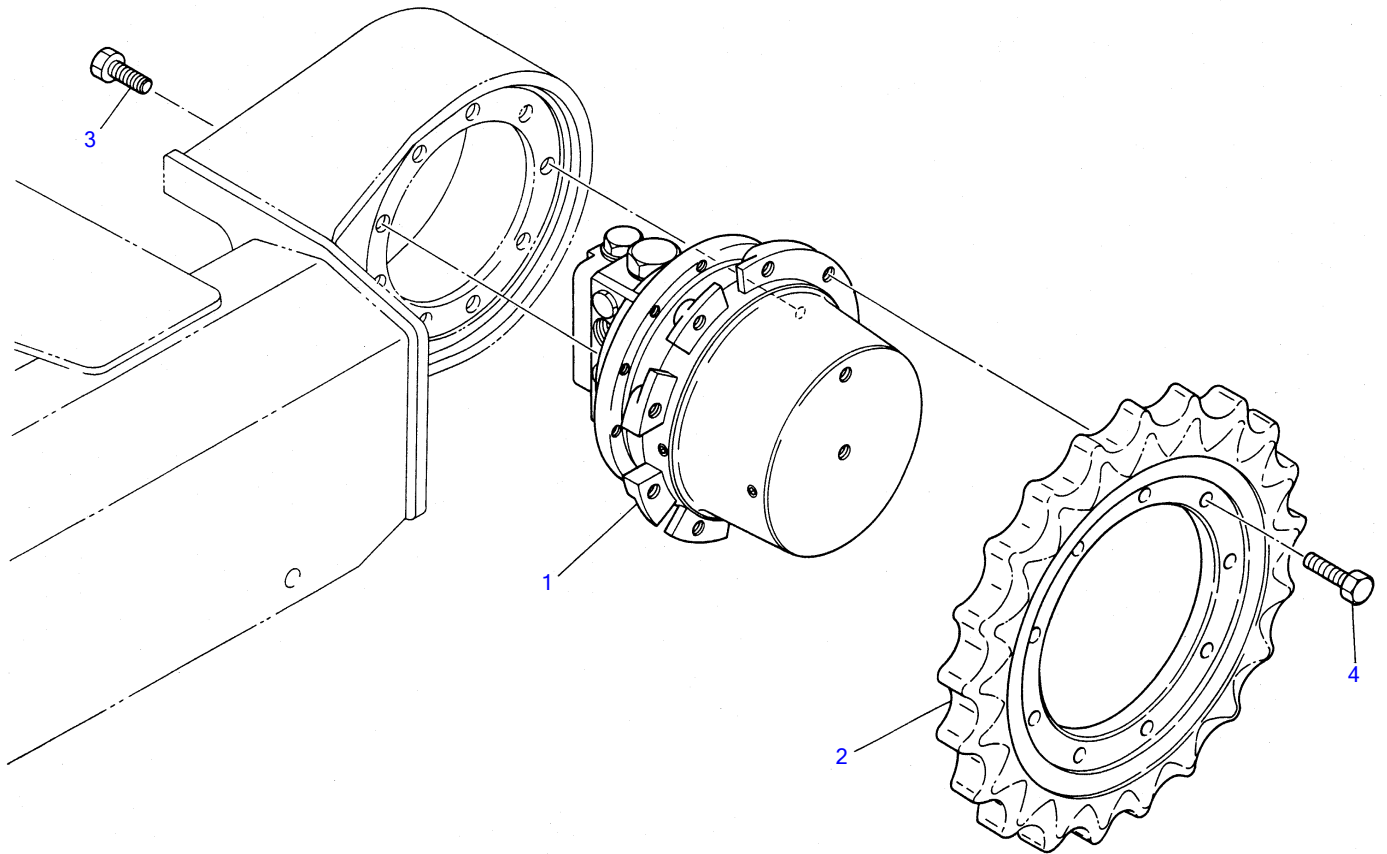
FRONT IDLER						
Item	Part number	Description	Q'ty	Chan.	Serial No.	Serv. Remarks
1	0431490010	IDLER ASSY, front	2			
2	0431401100	▪ IDLER	1			
3	0431400300	▪ SHAFT	1			
4	0431400600	▪ BUSHING	2			
5	1432500560	▪ SEAL, floating	2			
6	1420700300	▪ O-RING	2			
7	1501820001	▪ PLUG	1			
8	0431400500	▪ SLIDE	2			old type
	0351400100	▪ SLIDE	2	(H)		new type
9	1213001090	▪ PIN, spring	2			
	E305a4L					



G3-06a-0-D

TRACK ADJUSTER

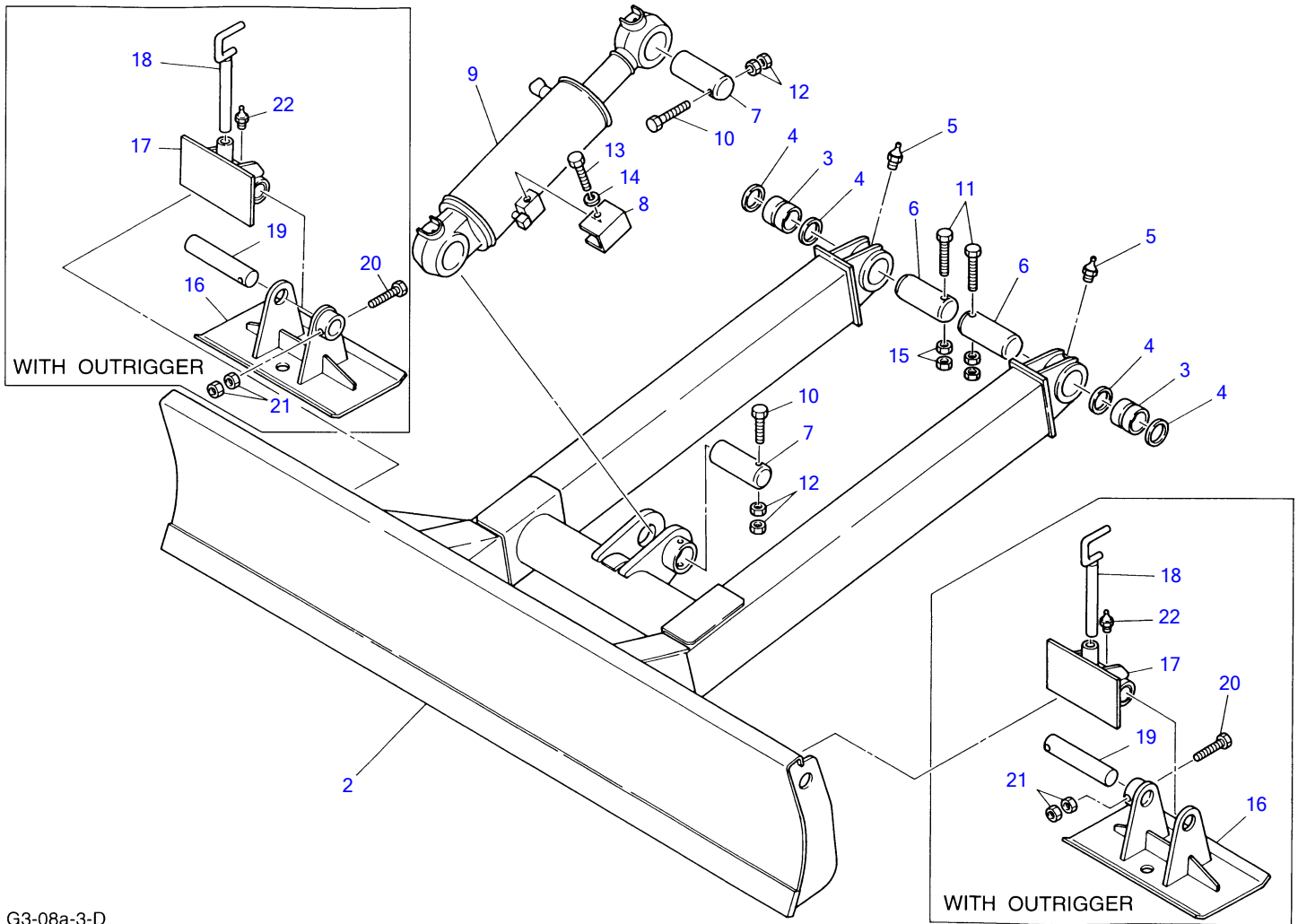
Item	Part number	Description	Q'ty	Chan.	Serial No.	Serv.	Remarks
1	0441502100	CUSHION ASSY	2				
2	0441502200	▪ CYLINDER, grease	1				
3	0441502300	▪ PISTON	1				
4	0431500300	▪ PLATE	1				
5	0007000004	▪ SPRING	1				
6	1132030020	▪ NUT	1				
7	1210000440	▪ PIN, split	1				
8	1541300501	▪ VALVE	1				
9	1400402640	▪ SEAL, oil	1				
10	1420010450	▪ O-RING	1				
11	1141540020	▪ WASHER	1				
12	1421020450	▪ RING, back-up	1				
13	1101051240	BOLT	8				
14	1140010012	WASHER, spring	8				
	G306a1L						



Z3-07a-1-D

TRAVEL DEVICE

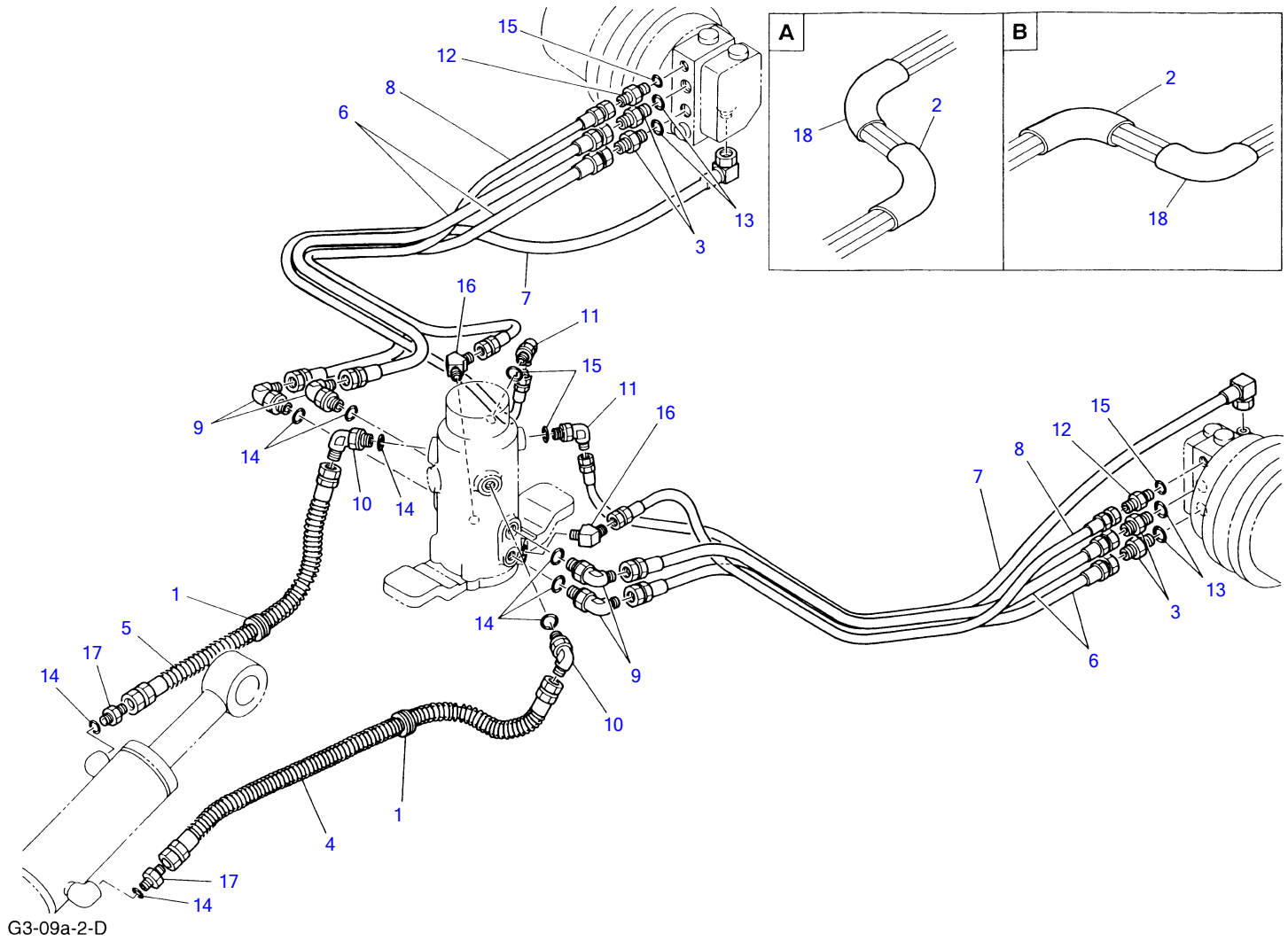
Item	Part number	Description	Q'ty	Chan.	Serial No.	Serv.	Remarks
1	1903108300	MOTOR ASSY	2				with P.B.
	1903108600	MOTOR ASSY	2				without P.B.
2	0271600100	SPROCKET	2				
3	1100251230	BOLT	18				
4	1100251235	BOLT	18				
	G307a3L						



G3-08a-3-D

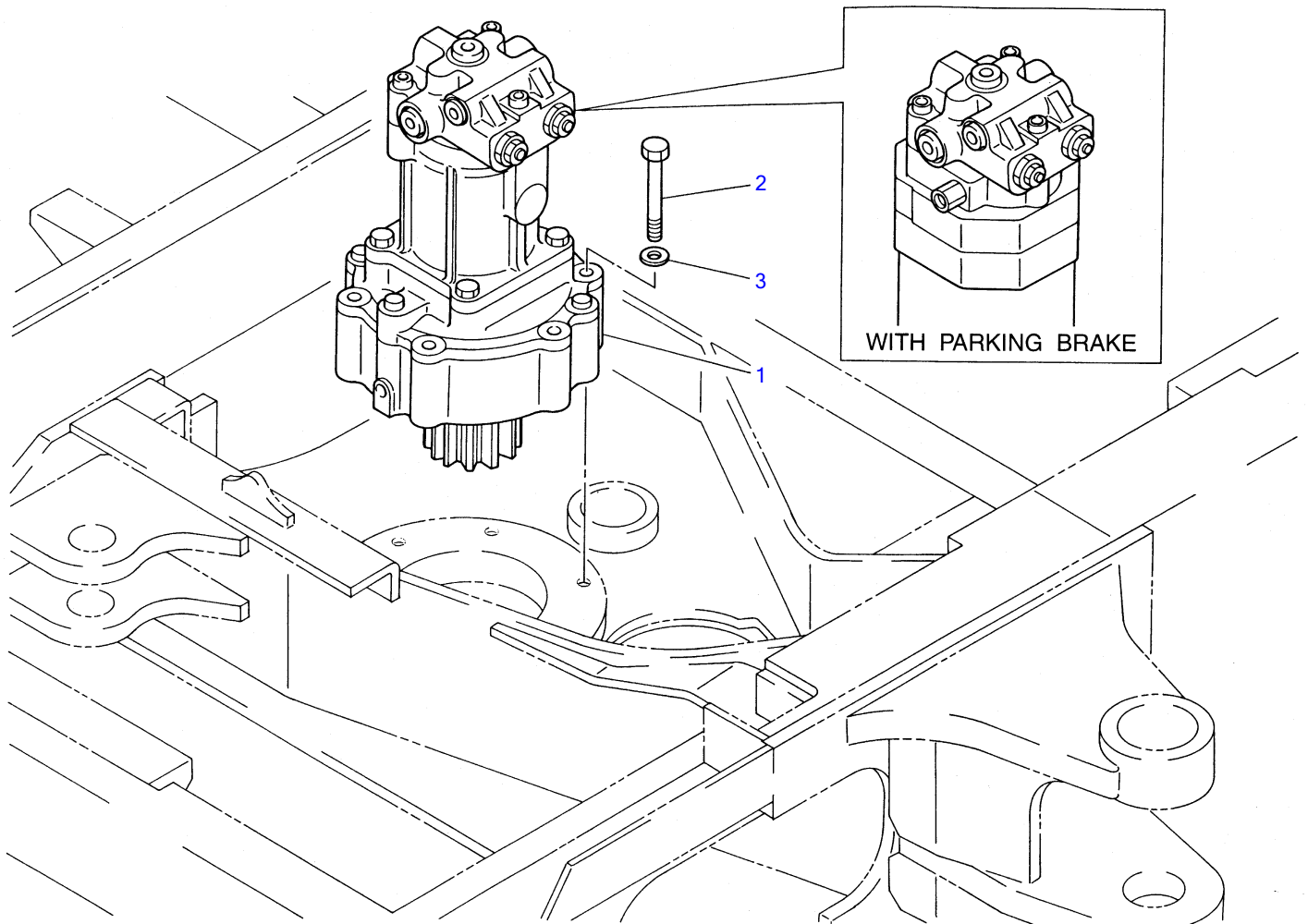
DOZER BLADE

Item	Part number	Description	Q'ty	Chan.	Serial No.	Serv.	Remarks
1	0376301100	BLADE ASSY	1				
2	X 0376301200	• BLADE	1				
3	0002200012	• BUSHING	2				
4	1432200040	SEAL, dust	4				
5	1560001000	NIPPLE, grease	2				
6	0001603125	PIN	2				
7	0001606140	PIN	2				
8	0426300400	COVER	1				
9	1900055100	CYLINDER, blade	1				
10	1103141200	BOLT	2				
11	1103041080	BOLT	2				
12	1130240012	NUT	4				
13	1100040860	BOLT	1				
14	1140020008	WASHER, spring	1				
15	1130240010	NUT	4				
16	0436301100	OUTRIGGER	2				with outrigger
17	0446303100	BRACKET	2				with outrigger
18	0436301300	PIN	2				with outrigger
19	0011501145	PIN	2				with outrigger
20	1103040865	BOLT	2				with outrigger
21	1130240008	NUT	4				with outrigger
22	1560001000	NIPPLE, grease	2				with outrigger
	G308a6L						



PIPING; LOWER

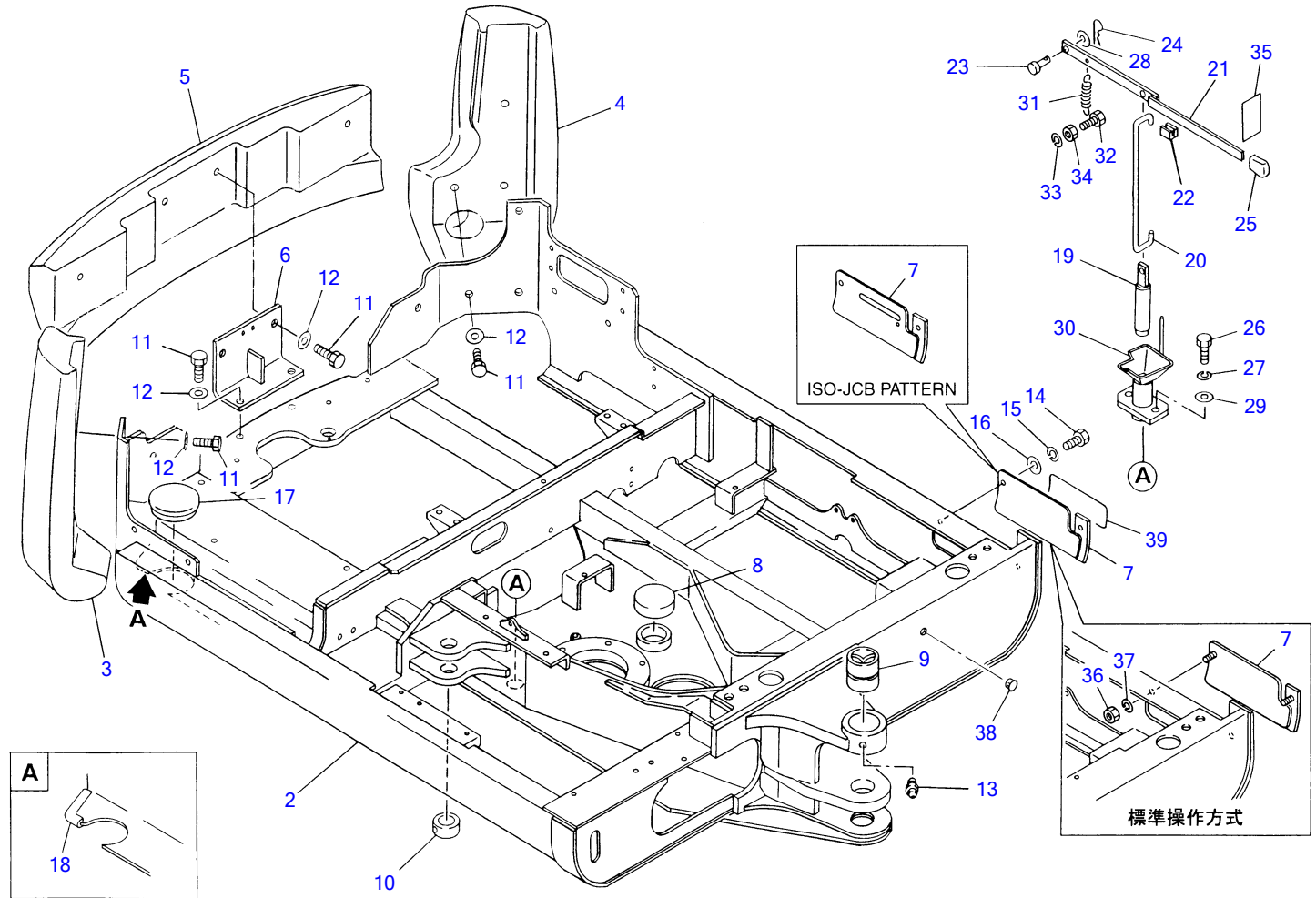
Item	Part number	Description	Q'ty	Chan.	Serial No.	Serv.	Remarks
1	0437200100	GUARD	2				
2	1531345015	PROTECTOR	2				sold by the meter
3	1515600577	ADAPTOR	4				
4	1935309110	HOSE ASSY	1				
5	1935309090	HOSE ASSY	1				
6	1935209107	HOSE ASSY	4				
7	1935806125	HOSE ASSY	2				
8	1934822105	HOSE ASSY	2				
9	1515010041	ELBOW	4				
10	1515100111	ELBOW	2				
11	1515010040	ELBOW	2				
12	1515600200	ADAPTOR	2				
13	1420010180	O-RING	4				
14	1420010140	O-RING	8				
15	1420010110	O-RING	4				
16	1511250002	ELBOW	2				
17	1515600201	ADAPTOR	2				
18	1531350040	PROTECTOR	2				sold by the meter
	G309a4L						



E3-10a-0-D

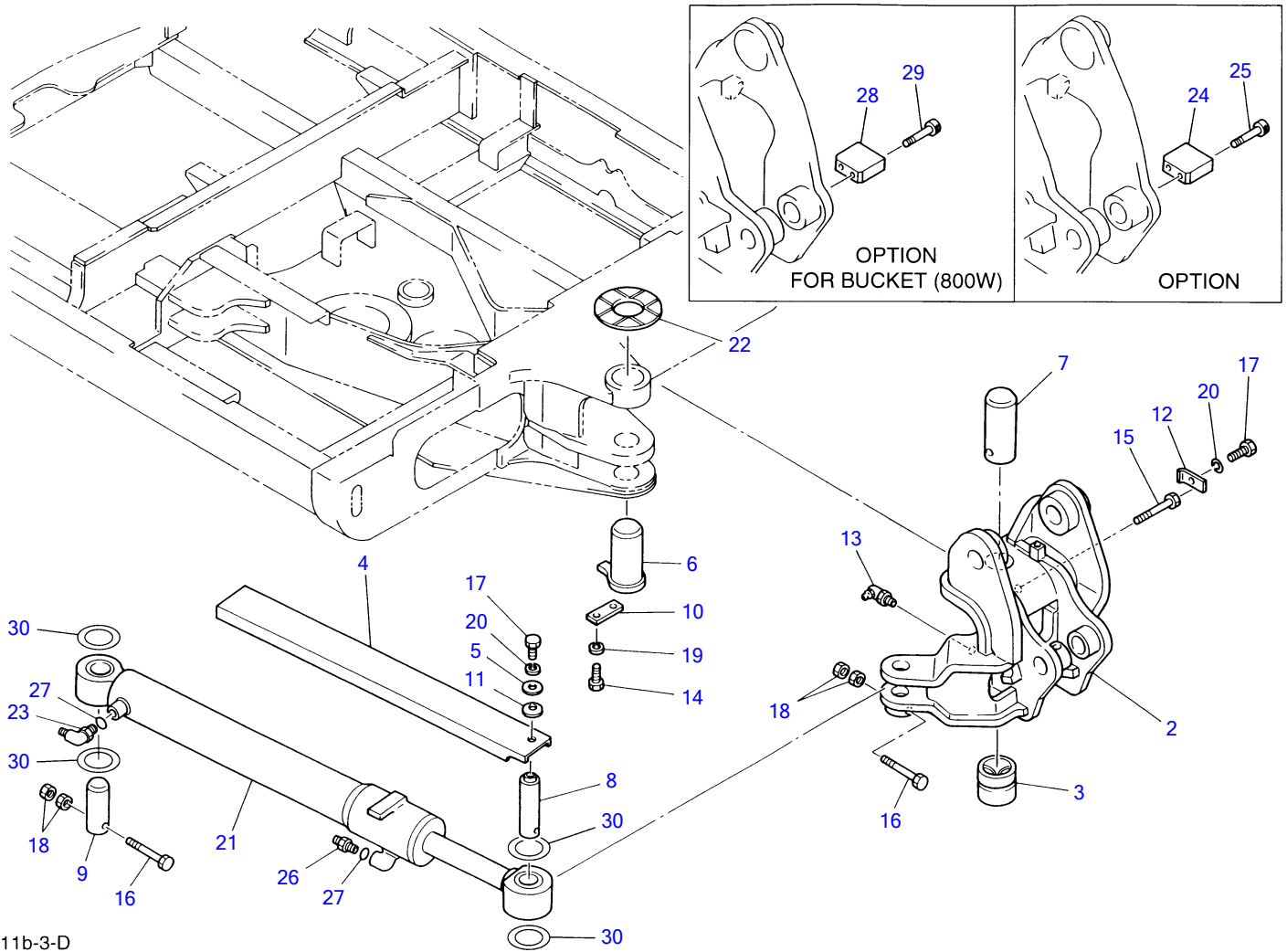
SLEWING DEVICE

Item	Part number	Description	Q'ty	Chan.	Serial No.	Serv.	Remarks
1	1903109900	MOTOR ASSY	1				without P.B.
	1903110000	MOTOR ASSY	1				with P.B.
2	1101041295	BOLT	6				
3	1141550012	WASHER	6				
	G310a1L						



G3-11a-4-D

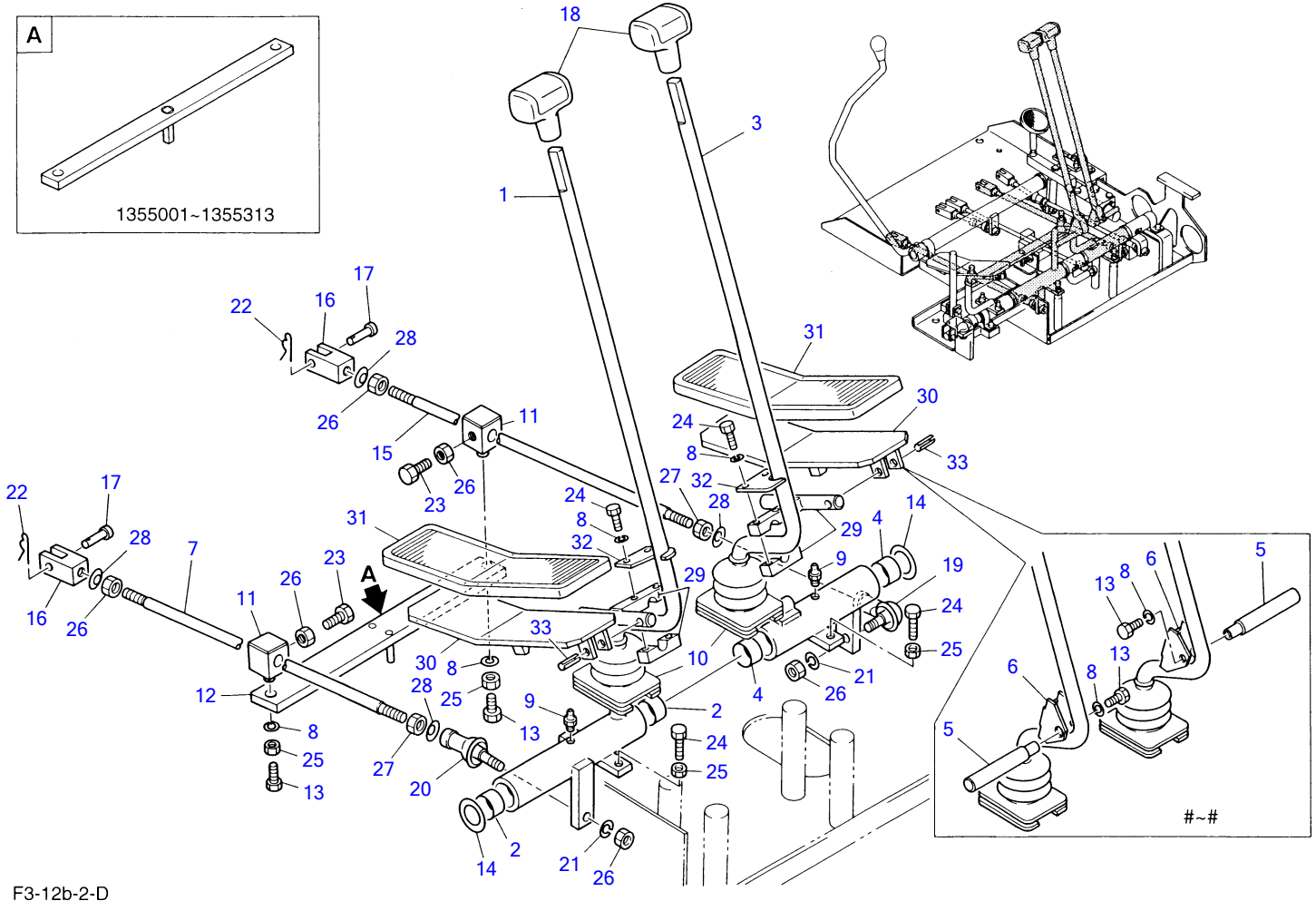
TURNTABLE						
Item	Part number	Description	Q'ty	Chan.	Serial No.	Serv. Remarks
1	X 0373002000	TURNTABLE ASSY	1			
	X 0373002100	TURNTABLE ASSY	1			standerd
2	X 0373002100	· TURNTABLE	1			
3	0373000200	· COUNTERWEIGHT	1			
4	0373000300	· COUNTERWEIGHT	1			
5	0373000400	· COUNTERWEIGHT	1			
6	0373001200	· ANGLE	1			
7	0353002300	· COVER	1			
	0353003300	· COVER	1			standerd
	0353006300	· COVER	1			pattern
8	0173216600	· COVER	1			
9	0002400023	· BUSHING	1			
10	0003300022	· COLLAR	1			
11	1101041440	· BOLT	12			
12	1141550014	· WASHER	12			
13	1560001000	· NIPPLE, grease	1			
14	1100090820	· BOLT	2			
15	1140090008	· WASHER, spring	2			
16	1141190008	· WASHER	2			
17	0393003400	· GROMMET	1			
18	0373002300	· RUBBER	1			sold by the meter
19	0352201100	PIN	1			
20	0352201200	ROD	1			
21	0352200400	LEVER	1		1355001~1355454	
	0352203200	LEVER	1	(H)	1355455~	
22	0432200300	PROTECTOR	1			sold by the meter
23	0004008021	PIN, lever	1			
24	1214000006	PIN, snap	1			
25	1650123440	GRIP	1			
26	1101041225	BOLT	2			
27	1140020012	WASHER, spring	2			
28	1141110008	WASHER	1			
29	1141110012	WASHER	2			
30	0352202100	BOSS	1			
31	0352203100	SPRING	1		1355455~	
32	1100040825	BOLT	1		1355455~	
33	1140020008	WASHER, spring	1		1355455~	
34	1130040008	NUT	1		1355455~	
35	0439302500	STICKER	1			
36	1130040006	NUT	2			standerd
37	1140020006	WASHER, spring	2			standerd
38	1652533023	CAP	1			
39	0355116100	STICKER	1			
	G311a5L					



G3-11b-3-D

BOOM SWING

Item	Part number	Description	Q'ty	Chan.	Serial No.	Serv.	Remarks
1	0453102100	BRACKET ASSY	1				
2	X 0453102200	· BRACKET	1				
3	0002400023	· BUSHING	1				
4	0433102300	COVER	1				
5	0103113200	WASHER	1				
6	0011907003	PIN	1				
7	0011517002	PIN	1				
8	0011574007	PIN	1				
9	0001694002	PIN	1				
10	0423102300	PLATE	1				
11	1225121020	SPRING, conical	1				
12	0423102500	PLATE	1				
13	1560001900	NIPPLE, grease	1				
14	1101041245	BOLT	2				
15	1100141010	BOLT	1				
16	1103041085	BOLT	2				
17	1100040820	BOLT	2				
18	1130240010	NUT	4				
19	1140020012	WASHER, spring	2				
20	1140020008	WASHER, spring	2				
21	1900056100	CYLINDER, swing	1				
22	0443102400	WASHER	1				t=3.5mm
23	1515010041	ELBOW	1				
24	0433101300	PLATE	1				option
25	1111041275	SCREW, cap	2				option
26	1515600201	ADAPTOR	1				
27	1420010140	O-RING	2				
28	0353900100	PLATE	1				for bucket(800W)
29	1111041275	SCREW, cap	2				for bucket(800W)
30	0003600058	SHIM	AR				t=0.2mm
	0003600059	SHIM	AR				t=0.5mm
	0003045000	SHIM	AR				t=1.0mm
	0003045001	SHIM	AR				t=1.6mm
	G311b5L						



F3-12b-2-D

BUY NOW

**Then Instant Download
the Complete Manual
Thank you very much!**