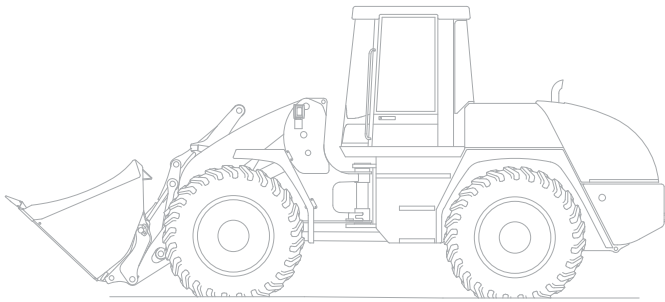




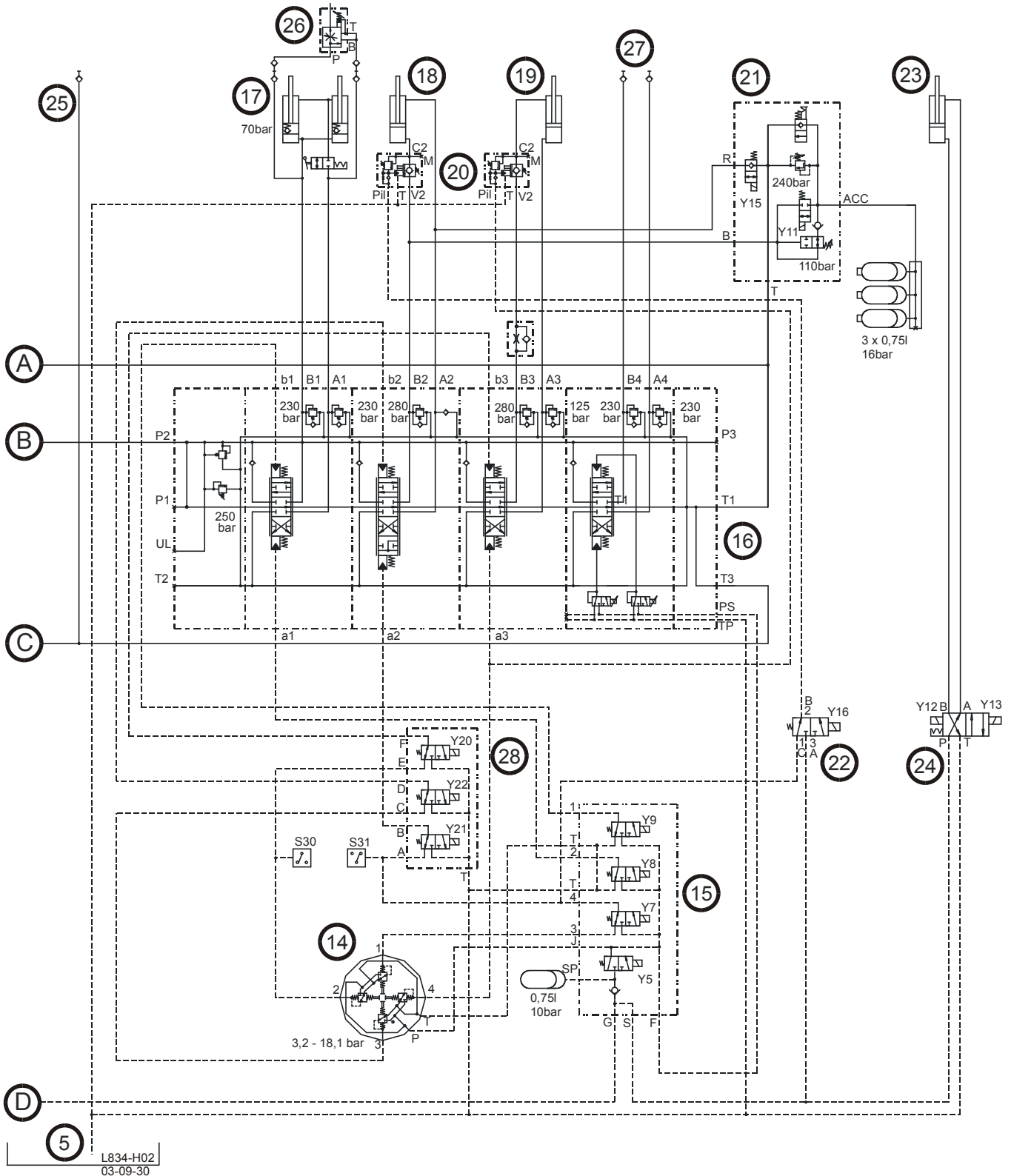
TL 65 SERVICE - MANUAL

List of Contents

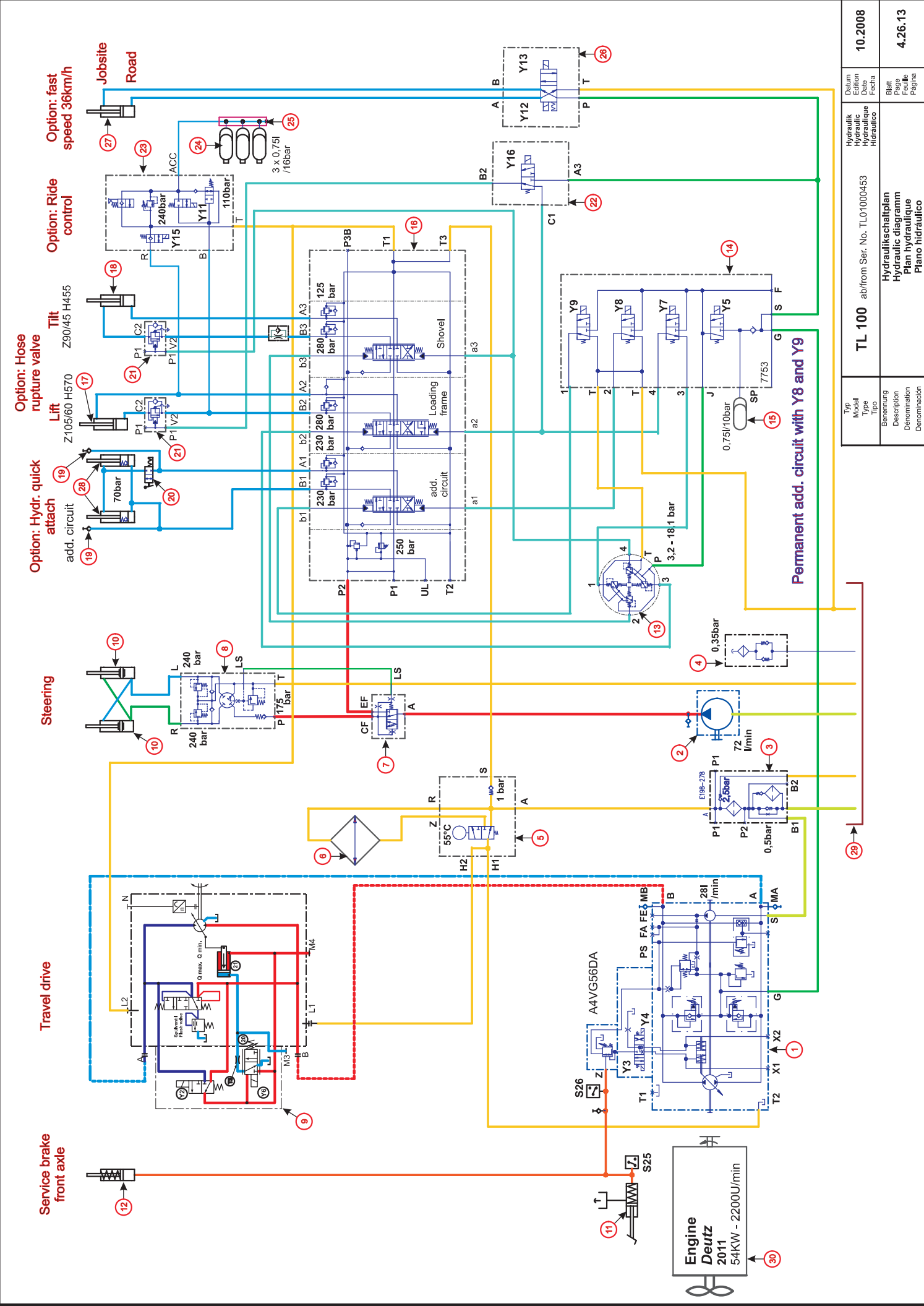
- 1 General**
- 2 Technical Data**
- 3 Diesel Engine**
- 4 Hydraulic System**
- 5 Setting Instructions**
- 6 Functional Description**
- 7 Electrical System**
- 8 Maintenance**
- 9 Operation**
- 10 Options**
- 11 Repair Instructions**
- 12 BDE/Special tooling**



- 1 Steering cylinder
- 2 Steering unit
- 3 Priority valve
- 4 Steering / loading pump
- 5 Hydraulic oil tank
- 6 Hydraulic oil radiator
- 7 Hydraulic oil temperature control
- 8 Hydraulic oil combined filter
- 9 Breather
- 10 Travel motor
- 11 Travel pump
- 12 Main brake cylinder
- 13 Brake, front axle



- 5 Hydraulic oil tank
- 14 Steering unit
- 15 Pilot control unit
- 16 Control valve
- 17 Additional control circuit connection, hydraulic quick-attach system
- 18 Hydraulic cylinder – lift frame
- 19 Hydraulic cylinder – bucket tilt
- 20 Load retaining valves
- 21 Vibration damping
- 22 Release valve (only if pos. 20 und 21 exist)
- 23 Transmission (S-version)
- 24 Valve (S-sersion)
- 25 Pressureless return
- 26 Flow divider
- 27 Additional control circuit
- 28 Control unit



Option: Hydr. quick attach add. circuit (19)

Option: Hose rupture valve (17)

Option: Ride control (18)

Option: fast speed 36km/h (27)

Service brake front axle (12)

Travel drive (9)

Steering (10)

Lift (17)

Tilt (18)

Permanent add. circuit with Y8 and Y9

Engine Deutz 2011 54KW - 2200U/min

Typ Model Type Tipo	TL 100	Datum Edition Fecha	10.2008
Bemennung Description Denominación	Hydraulikschaltplan Hydraulic diagram Plano hidráulico	Hydraulik Hydraulic Hidráulico	
	ab/frrom Ser. No. TL01000463		
		Blatt Page Folleto Página	4.26.13

Service Brake
(Front Axle)

Traveldrive

Steering
Z70/30 H270

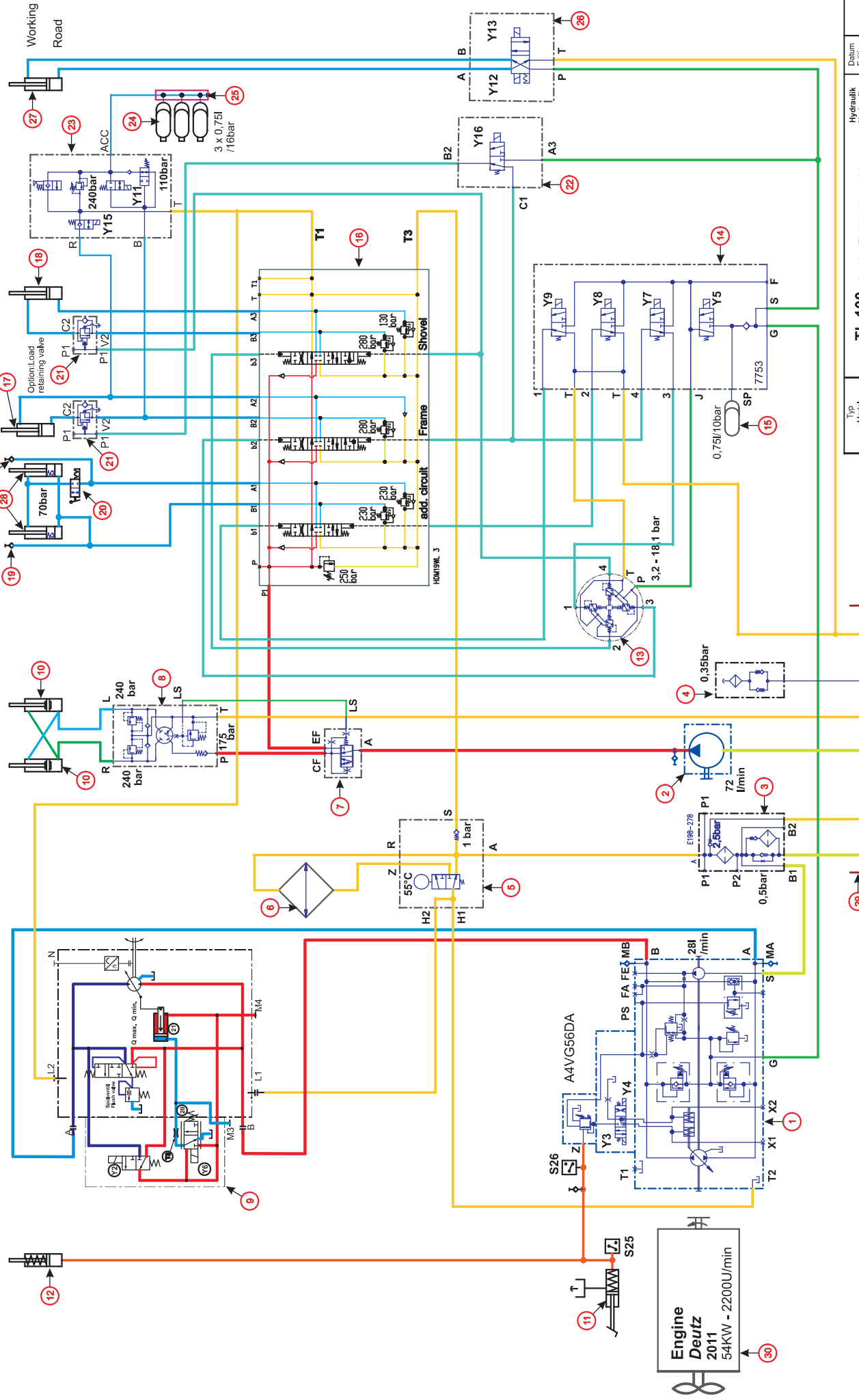
3rd add circuit

Option: Hydr.
Quick attach

Lifting frame
Z1105/60 H570

Option: Ride control
Shovel
Z90/45 H455

Option: Fast
travel version
Working
Road



Typ Model Type Typo	TL 100	Datum Edition Date Fecha	10.2008
Bemennung Description Dénomination Denominación	Hydraulikschaltplan Hydraulic diagram Plan hydraulique Plano hidráulico	Hydraulik Hydraulic Hydraulique Hidráulico	
	Se. No. TL01000915-0931 from Se. No. TL01000937	Blatt Page Feuille Página	4.26.23

Thank you very much for reading.

This is part of the demo page.

GET MORE:

**Diesel Engine, Hydraulic
System, Setting
Instructions, Functional
Description, Electrical
System And more.....**

Click Here BUY NOW

**Then Instant Download
the Complete Manual.**