

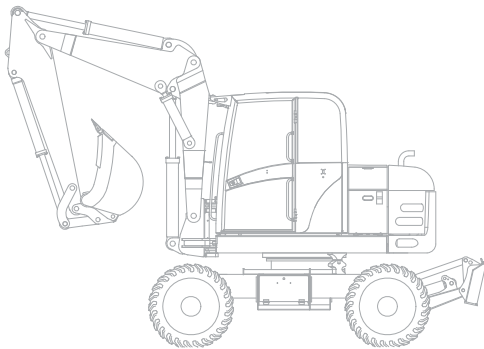


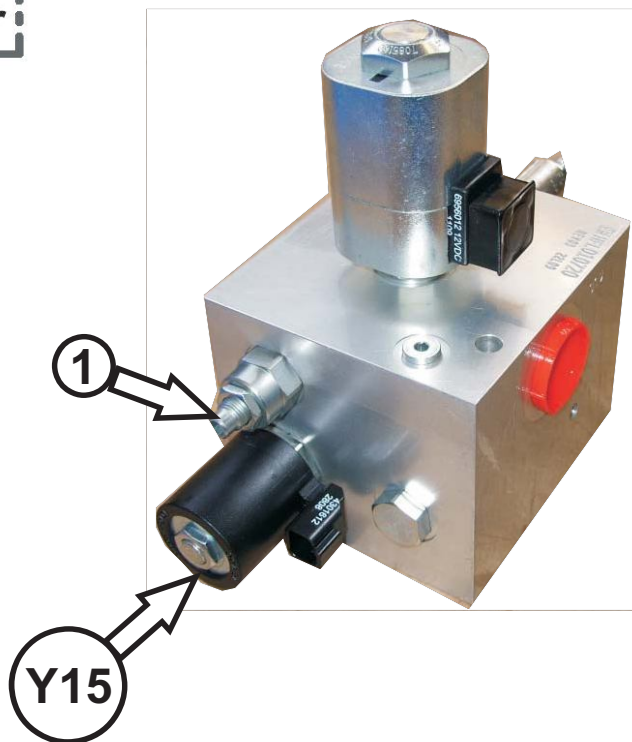
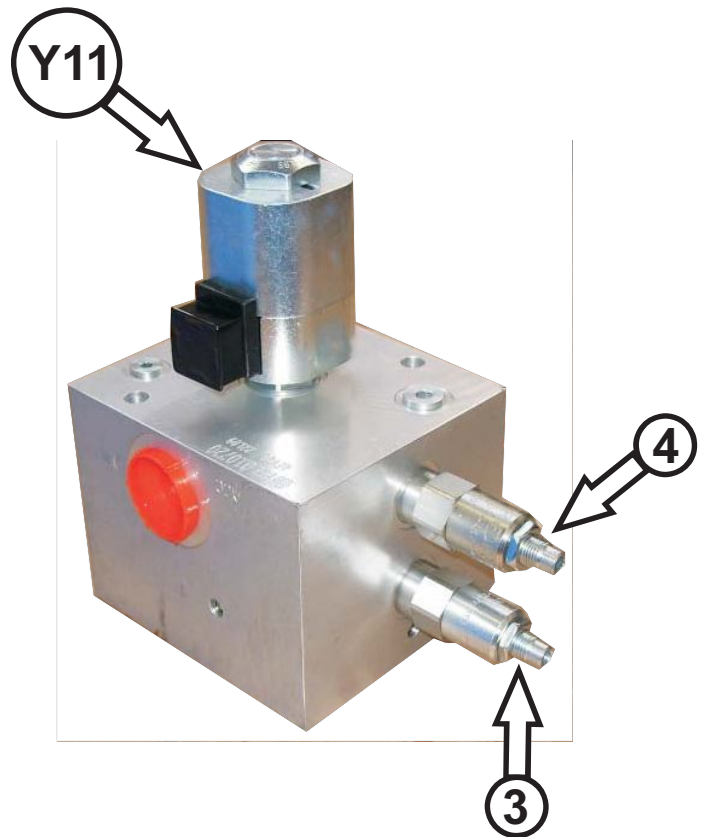
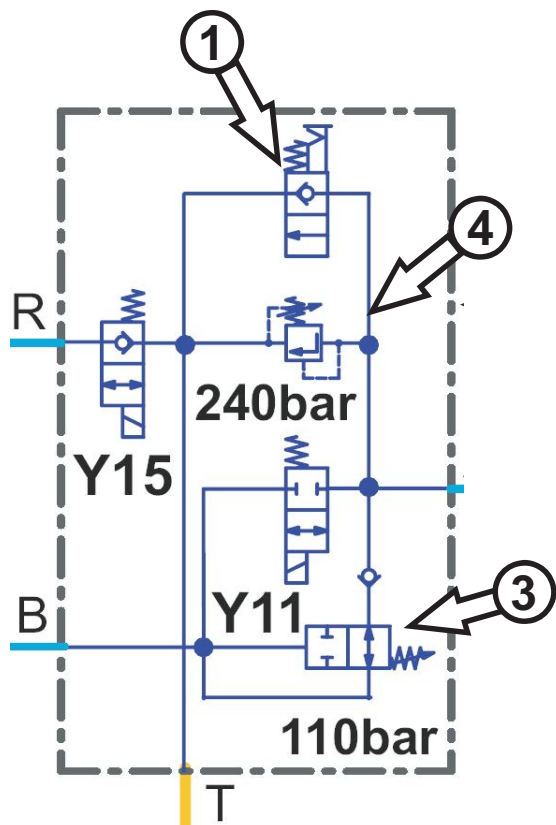
# **TEREX®**

## **TW 110 SERVICE - MANUAL**

### **List of Contents**

- 1 General**
- 2 Technical Data**
- 3 Diesel Engine**
- 4 Hydraulic System**
- 5 Setting Instructions**
- 6 Functional Description**
- 7 Electrical System**
- 8 Maintenance**
- 9 Operation**
- 10 Options**
- 11 Repair Instructions**
- 12 BDE/Special tooling**





Typ Model	TL65, TL70, TL80, TL80AS, TL100, TL120	Datum Edition	06.2008
Benennung Description	Lastschwingungsdämpfung Ride Control Valve	Blatt Page	10.500.01

# Ride control valve (Rexroth)

## Pressure accumulator - discharge screw

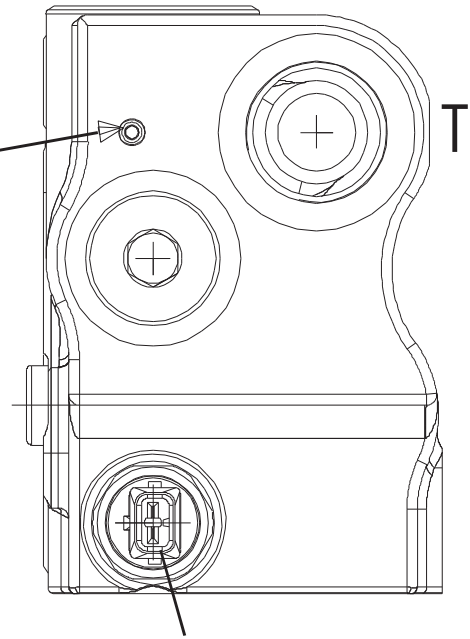
Before carrying out repair jobs at the ride control system, ensure the pressure accumulators to be totally discharged.

To do this, dismount plug and screw out the valve coil (wrench size 3mm) approx. two revolutions (counter clockwise).

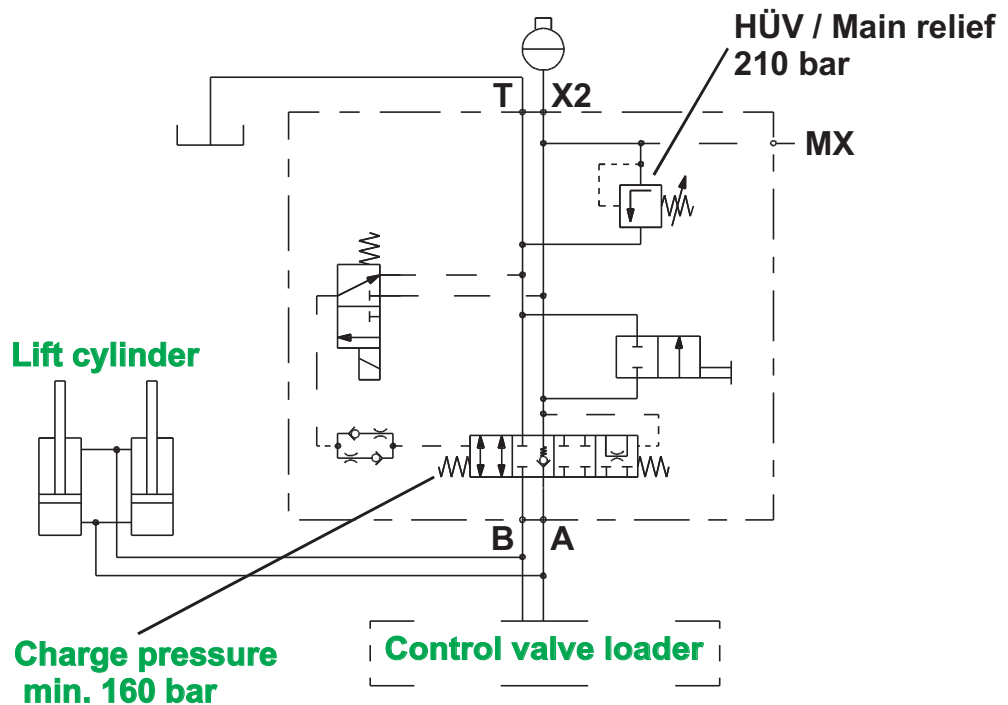
### REMARK:

Tightening torque: valve coil = 3,5 Nm

Tightening torque: plug = 7 Nm



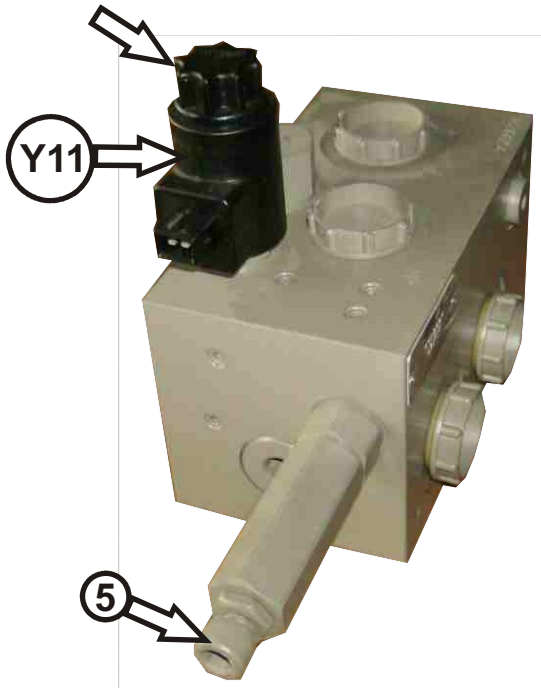
Solenoid valve 24V DC



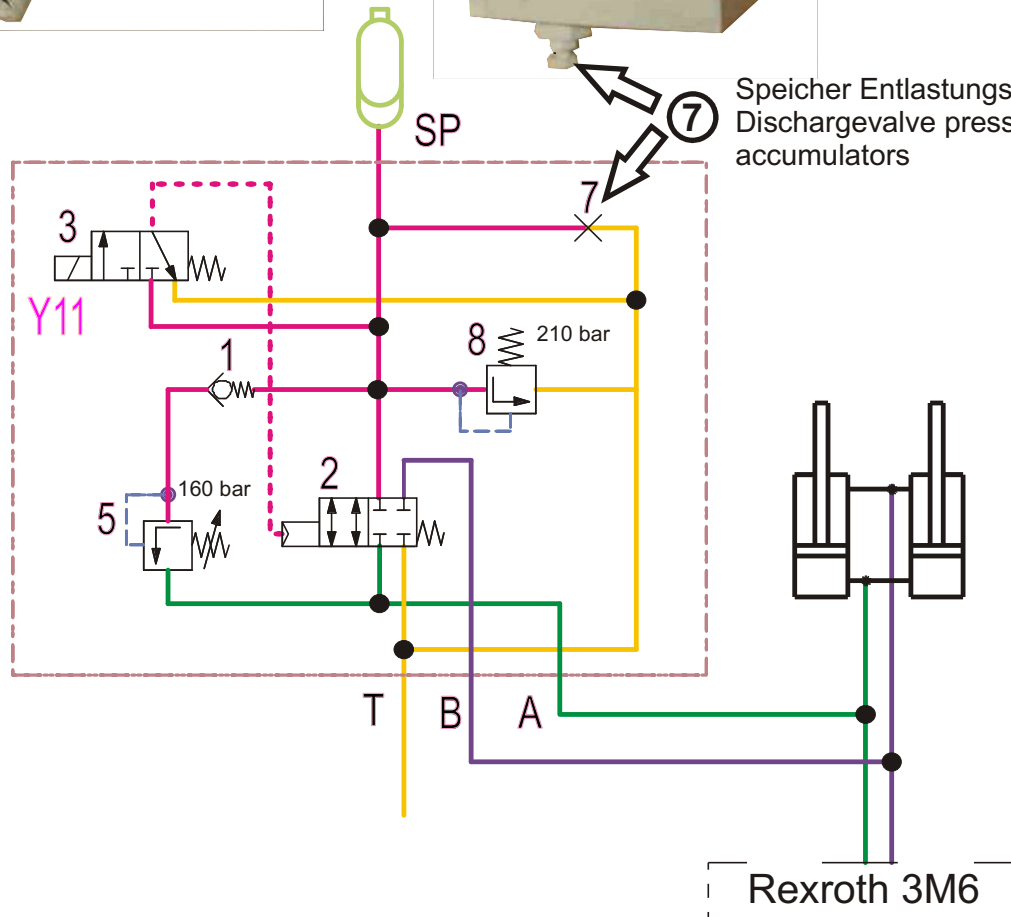
Typ Model	<b>TL160</b> to Se. Nr. TL01600165 <b>TL210</b> to Se. Nr. TL02100122 <b>TL260</b> to Se. Nr. TL02600168	Datum Edition	<b>06.2008</b>
Benennung Description	<b>Lastschwungsdämpfung</b> <b>Ride Control Valve</b>	Blatt Page	<b>10.500.02</b>

# LSD-Ventil (Hydac)

24V / 23 Ohm



Speicher Entlastungsventil  
Discharge valve pressure  
accumulators

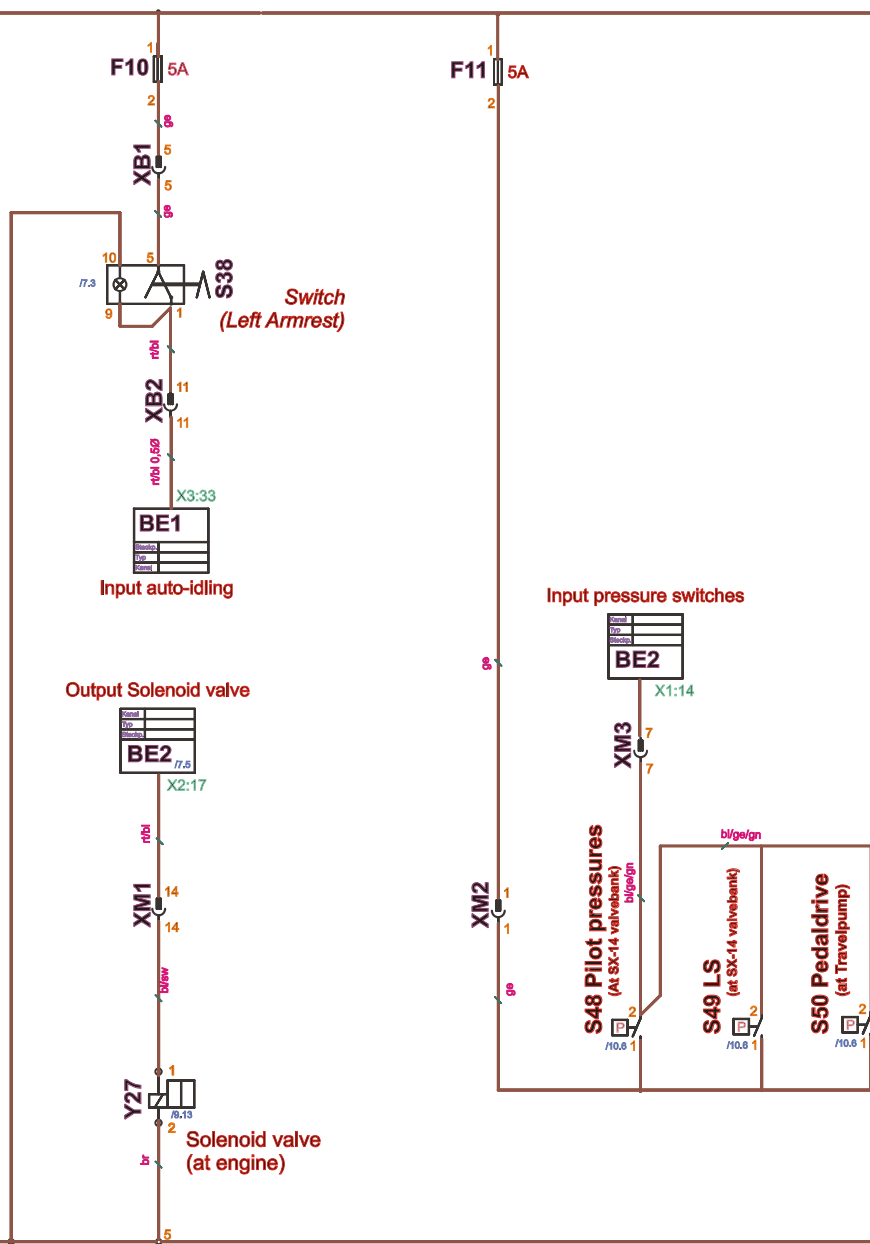


Typ Model	<b>TL160</b> <b>TL210</b> <b>TL260</b>	from Se. Nr. TL01600166 from Se. Nr. TL02100123 from Se. Nr. TL02600169	Datum Edition	<b>06.2008</b>
Benennung Description	<b>Lastschwingungsdämpfung</b> <b>Ride Control Valve</b>		Blatt Page	<b>10.500.03</b>

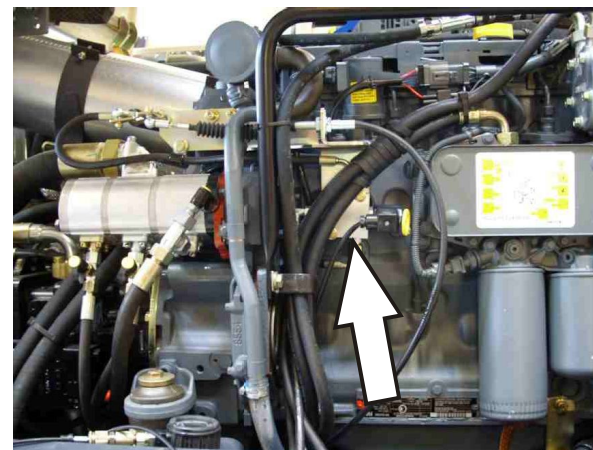
**AUTO-IDLING**

30  
15

30  
15



**Solenoid valve  
Auto-idling**



31

<b>XM1</b>	connector machine / dash board
<b>XM2</b>	connector machine / dash board
<b>XM3</b>	connector machine / dash board
<b>XB1</b>	connector floor frame / dash board

<b>XB2</b>	connector floor frame / dash board
<b>BE1</b>	connector central control module
<b>BE2</b>	connector additional control module

Typ Model Type Tipo	<b>TW 85/110</b>	Elektrisches System Electrical system Circuit électrique Sistema eléctrico	ab Fz.-Id.-Nr. from s/n à partir du n/s desde el no.	<b>TW00850100</b> <b>TW01100100</b>	Datum Edition Date Fecha	<b>09.2009</b>
Benennung Description Dénomination Denominación	<b>Stromlaufplan Wiring diagramm circuit électrique Esquemas de los circuitos</b>		<b>Blatt Page Feuille Página</b>	<b>1/2</b>	Blatt Page Feuille Página	<b>10.600.01</b>

## Pressure switches at valvebank (in the pilot pressure lines)

**S48 Pilot pressure**  
(Switchpoint 5 bar)

Lowering Boom

Dipper in

from Joystick

from Joystick

LS signal to hydraulicpump

**S49 LS-signal**  
(Switchpoint 25 bar)

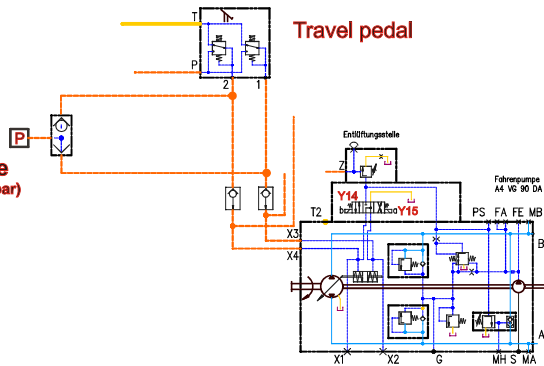
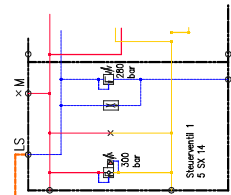
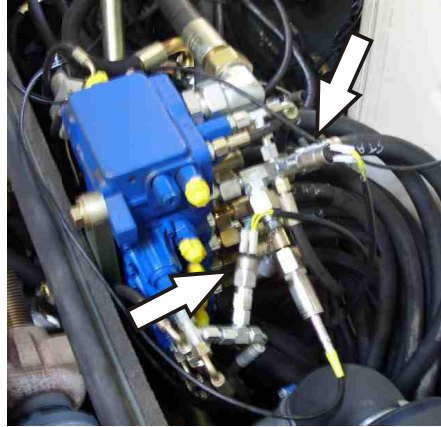
from SM12 valvebank

**S50 Pedaldrive**  
(Switchpoint 5 bar)

Travel pedal

Travelpump

Pressure switches S48/S49 at Valvebank  
(for example TW110)

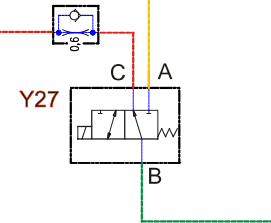


connected to return at the Solenoidvalves  
Y6/Y5 Fast / Slow  
(undemeath Exhaust)

Charge (pilot) pressure from  
travelpump port "G"

Low idle ↑

High idle ↓



Typ Model Type Tipo	<b>TW 85/110</b>	Elektrisches System Electrical system Circuit électrique Sistema eléctrico	ab Fz.-Id.-Nr. from s/n à partir du n/s desde el no.	<b>TW00850100</b> <b>TW01100100</b>	Datum Edition Date Fecha	<b>09.2009</b>
Benennung Description Dénomination Denominación	<b>Stromlaufplan</b> <b>Wiring diagramm</b> <b>circuit électrique</b> <b>Esquemas de los circuitos</b>		<b>Blatt</b> <b>Page</b> <b>Feuille</b> <b>Página</b>	<b>2/2</b>	Blatt Page Feuille Página	<b>10.600.02</b>

**Thank you very much for reading.**

**This is part of the demo page.**

**GET MORE:**

**Diesel Engine, Hydraulic  
System, Setting  
Instructions, Functional  
Description, Electrical  
System And more.....**

**Click Here BUY NOW**

**Then Instant Download  
the Complete Manual.**