

Document Title: General notes to be observe when working on power transmission assemblies	Function Group: 400	Information Type: Service Information	Date: 2014/4/9 0
Profile: CEX, ECR38 [GB]			

General notes to be observe when working on power transmission assemblies

NOTE!

The following instructions are preventing from possible dangers of accident, injury or danger to life.

NOTE!

Special notes to improve operating, inspection and adjustment procedures as well as service work.

- Trained personnel
- Specified tools and testing equipment, such as test stand, flaw tester, special tools
- Genuine spare parts

All work to be performed should be executed with greatest care and conscientiousness!

The safety regulations must be observed and strictly applied!

Any regulations of the responsible liability association must be followed.

NOTE!

Before starting work on power transmission components the machine must be parked on level ground of sufficient load bearing capacity, secured against rolling away and the engine is to be shut down.

NOTE!

The complete system must be relieved from any pressure and the battery must be disconnected.

NOTE!

If running of the engine and a connected battery is required for certain test procedures, special precautions must be taken to rule out dangers for persons.

NOTE!

When removing and installing parts to be replaced or repaired strict cleanliness is the most important prerequisite.

Make sure that no dirt and other contaminating substances can enter into the system.

- Clean fittings, filler caps and their immediate surrounding area so that no dirt can fall in.
- Before disconnecting any hoses, pipes or similar shut down the engine and relieve the pressure in the system.
- Before starting repair work close all ports and openings with clean plugs or caps and do not forget to remove these parts before installation.
- Use only lint-free cloths to wipe out and clean hydraulic components.
- When filling up the hydraulic oil tank the oil must generally be passed through the filter, because even new oil from closed oil drums does not fulfilled the requirements demanded from a clean hydraulic oil.
- When assembling hydraulic parts grease must not be used as a sliding agent, use hydraulic oil instead.
- If metal chips and abrasion residuals are found in the hydraulic oil tank all hydraulic circuits must be thoroughly flushed and cleaned.

Repairs must generally be carried out with genuine spare parts.

Before disassembling marks all parts as a measure to help during later reassembly.

Generally use new seals when reassembling. Self-locking nuts must generally be replaced.

Perform all repair work only by using suitable tools and perform adjustments generally with the help of specified measuring equipment.

When installing new components the adjustments must be generally checked, i.e. diesel engine and new components must be adapted to each other.

- Check pressures and rotational speeds.
- Check fittings and flanges for leaks.
- Watch the oil level in the hydraulic oil tank, if necessary top up hydraulic oil.

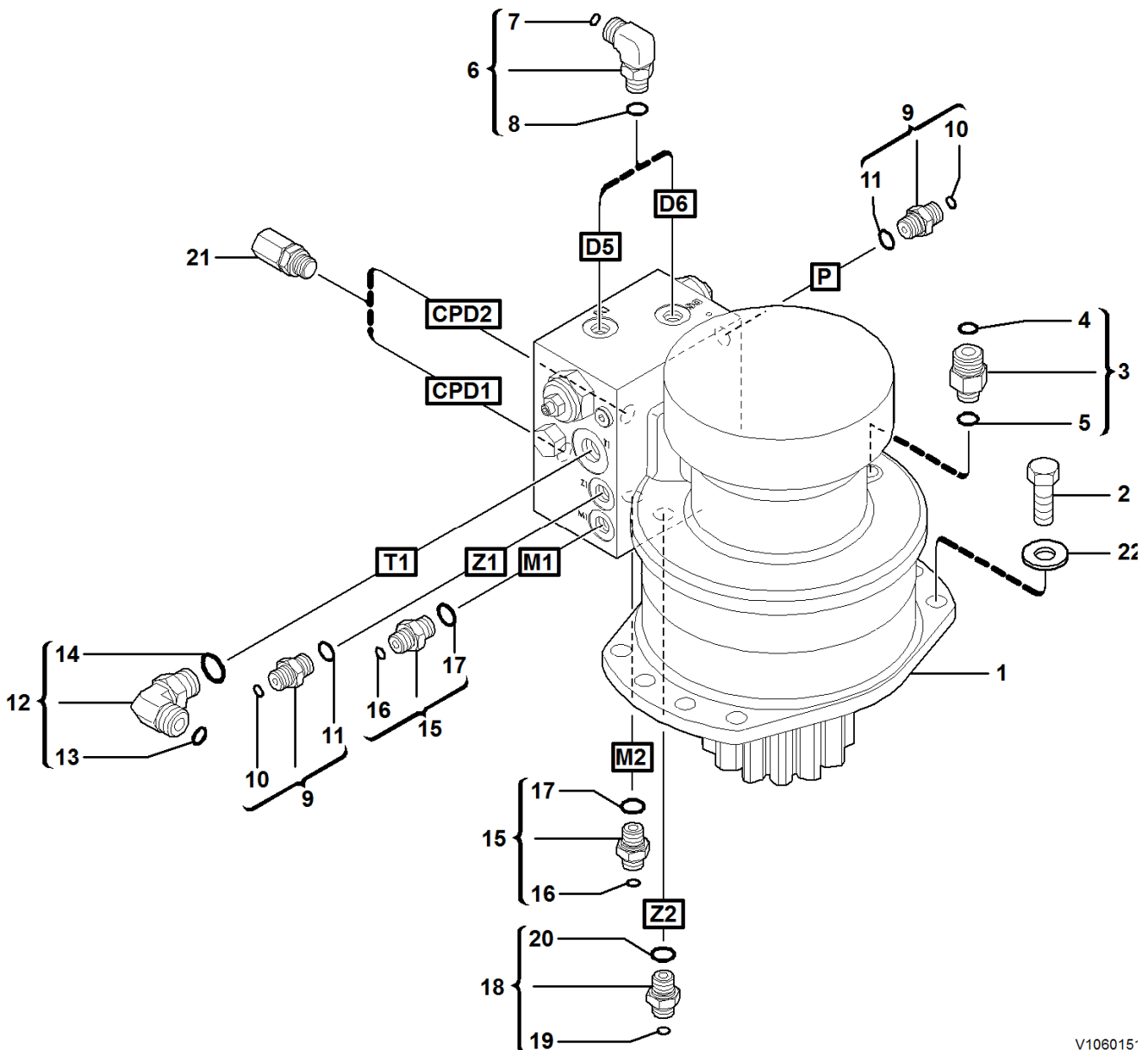
NOTE!

The wheel motors contain parts that have been pressed in. These parts can normally not be disassembled and should not be removed with force.

Document Title: Slew motor, description	Function Group: 441	Information Type: Service Information	Date: 2014/4/9 0
Profile: CEX, ECR38 [GB]			

Slew motor, description

The slew motor is located underneath the floor plate in the cab to the right of the fuel tank. The slew motor is responsible for turning the upper part of the machine in conjunction with the slew ring. This is accomplished by a gear located at the bottom of the slew motor meshing with the teeth of the slew ring.



V106015

Figure 1
Slew motor and components

1. Slew motor
2. Screw
3. Nipple

Hello

**Thank you very much
for reading.**

PLEASE CLICK HERE.

Then back to the site.

At the bottom of the
page,

free add to card.

Then get more free information